



## Water Conservation Landscape Programs

# Rain Water Harvesting



# Rainwater Harvesting Rebate Program

---

- Austin Water offers a financial incentive to encourage rainwater harvesting for non-potable uses.
- Rebate amount: (**Not to exceed 50% of the system cost**)
  - .50 / gal. for non-pressurized systems. (rainbarrels)
  - 1.00 /gal for pressurized systems (large cisterns with a pump)
- Rainbarrels less than 500 gal.
  - May install after purchase but must submit application and receipts within 30 days of purchase
- Systems over 500 gal.
  - A site drawing, a system drawing, and operation/maintenance guide must be included with the application before installation.

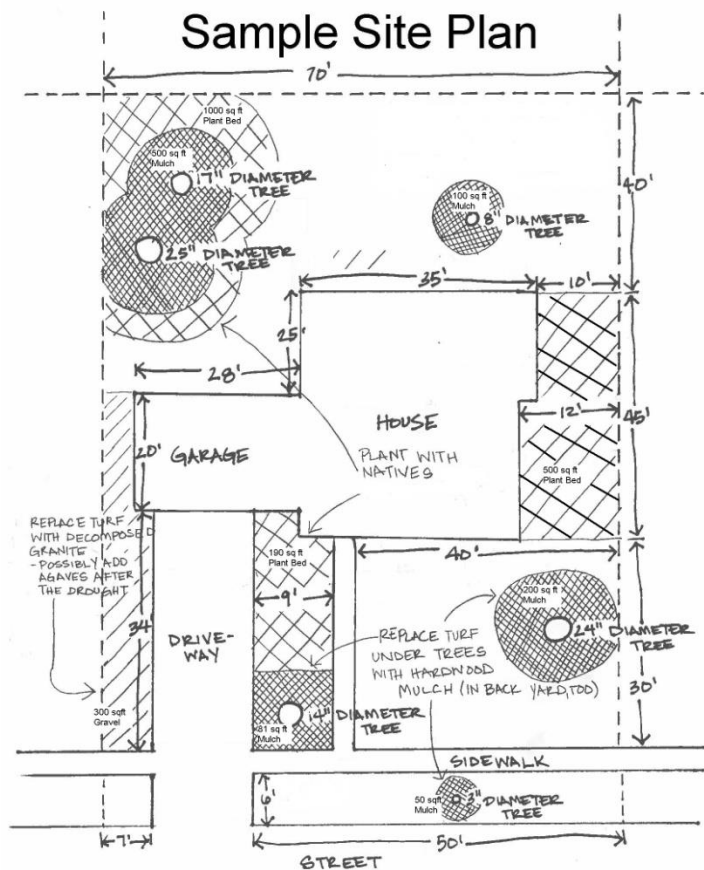
# WaterWise Landscape Rebate Program



- We are giving an incentive to take out your healthy turf grass and replace it with native plant beds
- \$25 for every 100 sq.ft. that is converted.  
(min 500 sq.ft. – max 5000 sq.ft.)
- No turf to turf replacement, must be native plant bed and/or permeable hardscape

# Eligibility

- Austin water residential customer or qualifying water provider
- Completion of application and materials
- Size of conversion area (500sqft min)
- Have not started work on the conversion (must be accepted into the program first)
- Health of current turf grass must be 75% or better



\*NOT TO SCALE

# Current Turf Grass

- Quality of turf grass being replaced (75% or better)
- Pre-inspection of lawn needed if photos cannot determine the condition



# Program Requirements

---

- Must add 1" compost to a minimum of 6" tilled soil to any plant beds outside the drip lines of trees.
- Plants from the Grow Green plant guide
- No more than 5% annuals
- Plant beds and mulch hardscape must have 2-3" of hardwood mulch
- Must use weed barrier fabric under gravel and mulch hardscape areas
- Conversion area must comprise of over 50% plant cover at maturity (We do not want to add to the "Heat Island" effect)

## Program Requirements (cont.)

- Automatic systems must be capped off or converted to drip in the conversion area. **Irrigation Upgrade Rebate Program** will be available to those in the program.
- No water features in conversion area
- No gravel in R.O.W. less than 1" in diameter





# Pilot Program Fall 14 – Spring 15

## Multi-Family HOA Program Requirements

---

- Use Austin Water's Xeriscape Plant list
- Plants from the Grow Green plant guide
- No gravel or stone to be included in the conversion area.
- Conversion areas in the Right-of-Way will not be included in the conversion area
- No conversions in the stormwater credit areas
- City approved screening and buffering areas cannot be modified.

# Irrigation Upgrade Program

- Irrigation Upgrade Rebate (Max \$400)
  - Existing irrigation systems only
  - Either the homeowner or a licensed irrigator may do the work
  - Receipts must be itemized with labor and parts separated
  - Must submit the application within 30 days of completing the upgrade work
  - Only one time per property



# Irrigation Upgrade Program

- Conversion from spray to multi-stream rotor nozzles (\$4 per nozzle up to \$100)



- Conversion of a station to drip (up to \$50 per station)



- Rain or soil moisture sensors (up to \$50)



# Irrigation Upgrade Program

- Pressure regulating valve (up to \$100)
- Pressure regulating components (up to \$100)
- Capping a station (\$50 per station)



# Water Conservation Contact

---

- Website: [www.waterwiseaustin.org](http://www.waterwiseaustin.org)
- Water Conservation Mainline – 512-974-2199
- Email: [watercon@austintexas.gov](mailto:watercon@austintexas.gov)
- Office address – 625 E 10<sup>th</sup> st. - 6<sup>th</sup> floor