

Design: Lessons Learned

Helen Ivor-Smith

Landscape and Restoration Designer

November 17, 2020



ENVIRONMENTAL
SURVEY
CONSULTING

Educating the client

- “I want my landscaping to be low maintenance.”
- “I want lots of color.”
- Working with Mother Nature



ENVIRONMENTAL
SURVEY
CONSULTING

Universal design concepts

Softening and framing



ENVIRONMENTAL
SURVEY
CONSULTING

Universal design concepts

Softening and framing



ENVIRONMENTAL
SURVEY
CONSULTING

Universal design concepts

Softening and framing: Breaking up a long wall, using it as a canvas or backdrop



ENVIRONMENTAL
SURVEY
CONSULTING

Universal design concepts

Softening and framing: Breaking up a long wall, using it as a canvas or backdrop



ENVIRONMENTAL
SURVEY
CONSULTING

Universal design concepts

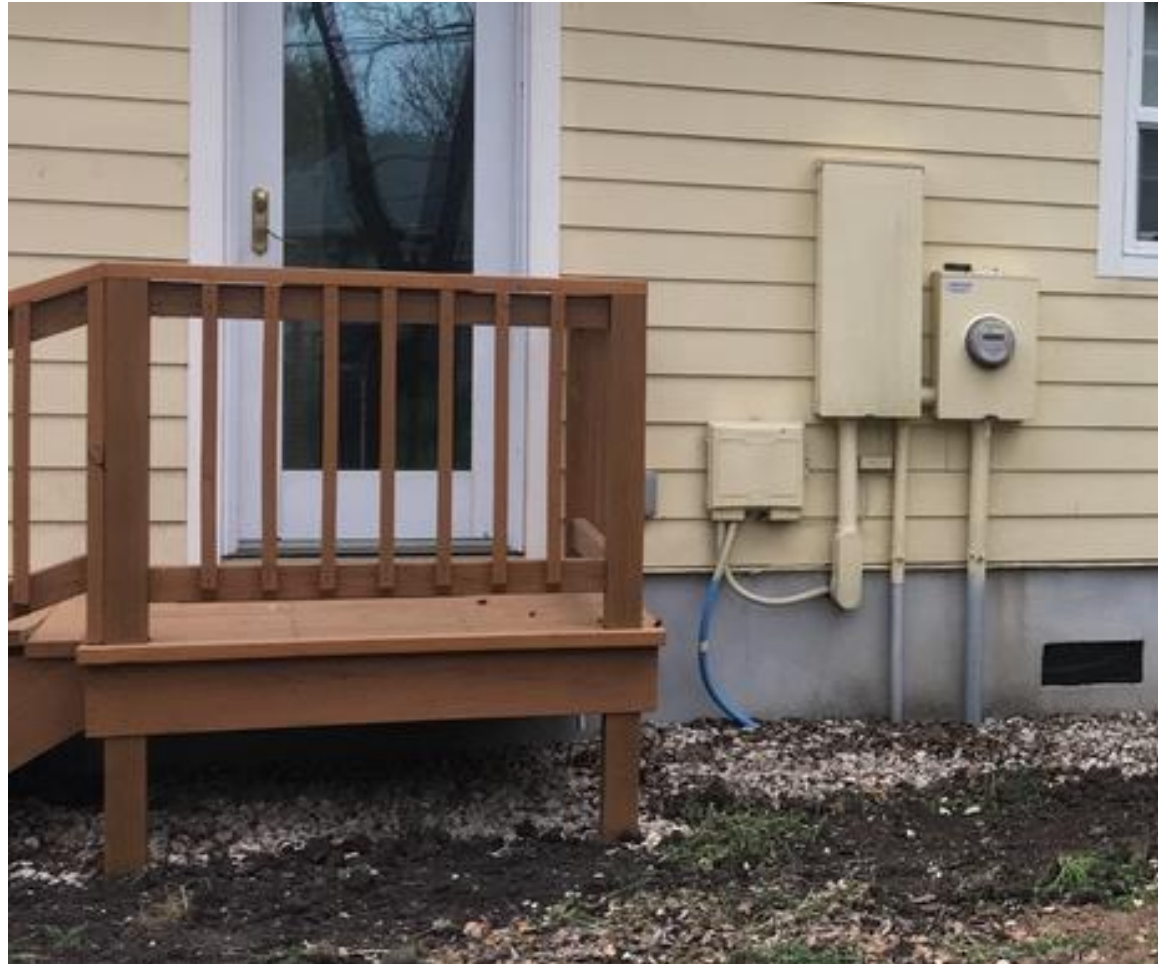
Softening and framing: Corners



ENVIRONMENTAL
SURVEY
CONSULTING

Universal design concepts

Softening and framing: Corners



ENVIRONMENTAL
SURVEY
CONSULTING

Universal design concepts

Softening and framing: Corners



ENVIRONMENTAL
SURVEY
CONSULTING

Universal design concepts

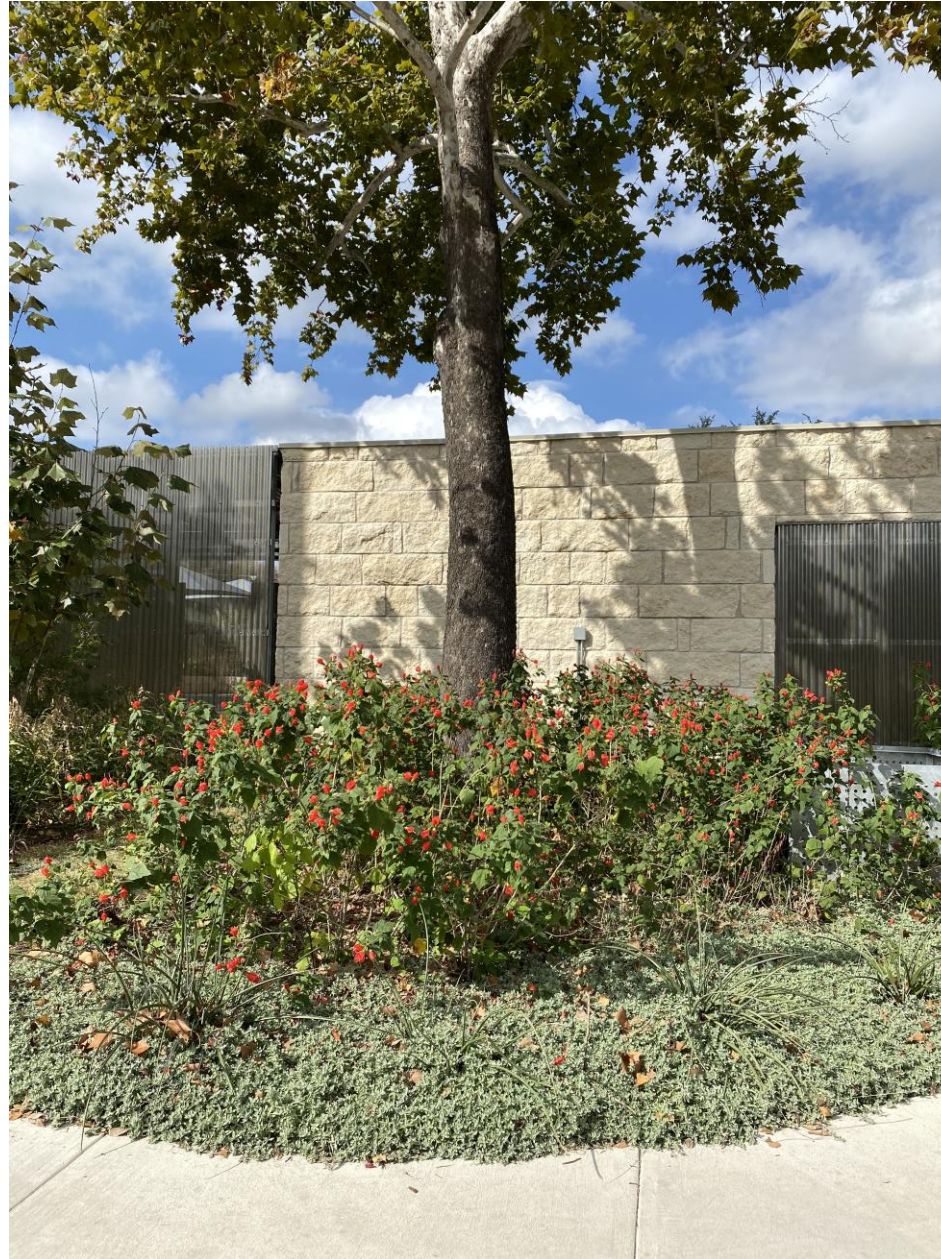
Softening and framing: Lollipop trees



ENVIRONMENTAL
SURVEY
CONSULTING

Universal design concepts

Softening and framing: Base of Trees



ENVIRONMENTAL
SURVEY
CONSULTING

Universal design concepts

Softening and framing



ENVIRONMENTAL
SURVEY
CONSULTING

Universal design concepts

Softening and framing



ENVIRONMENTAL
SURVEY
CONSULTING

Universal design concepts

Softening and framing



ENVIRONMENTAL
SURVEY
CONSULTING

Universal design concepts

Softening and framing



ENVIRONMENTAL
SURVEY
CONSULTING

Practical design approaches

Pathways



ENVIRONMENTAL
SURVEY
CONSULTING

Practical design approaches

Reasons to go native



ENVIRONMENTAL
SURVEY
CONSULTING

Maintenance, Maintenance, Maintenance

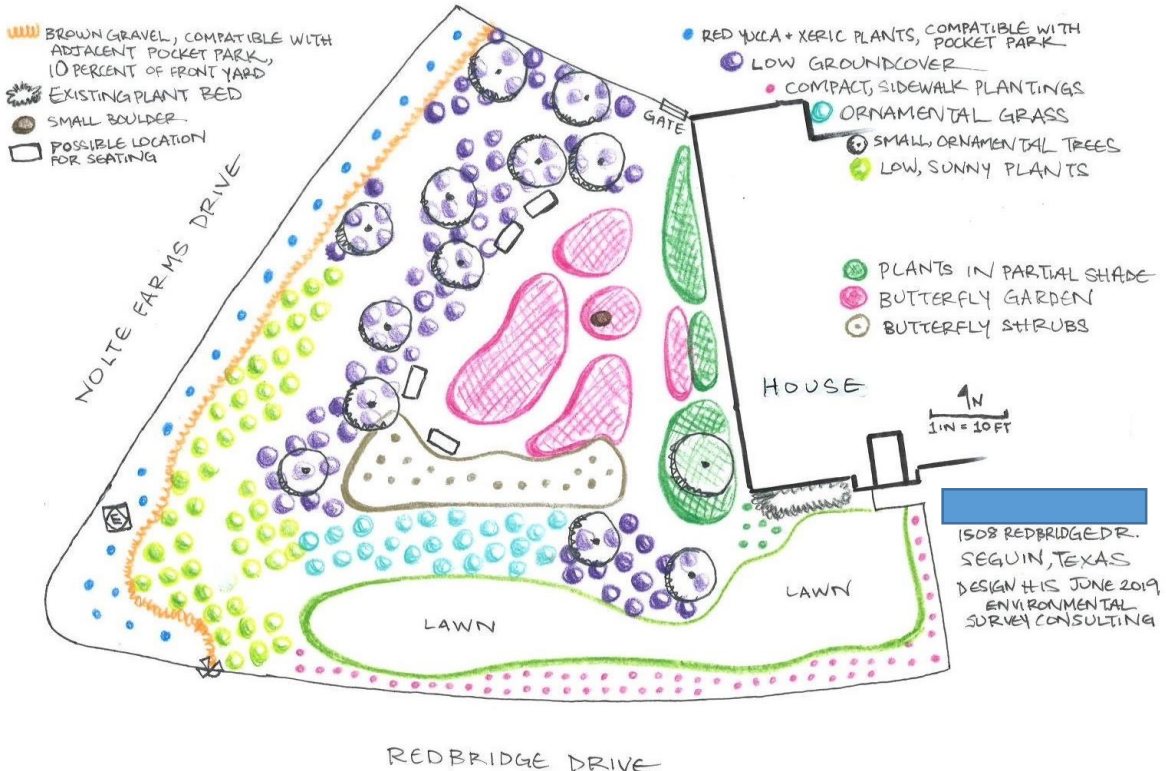
Clients themselves intends to maintain—but unlikely



ENVIRONMENTAL
SURVEY
CONSULTING

Maintenance, Maintenance, Maintenance

Clients themselves intends to maintain—and they are devoted gardeners and botanists



ENVIRONMENTAL SURVEY CONSULTING

Maintenance, Maintenance, Maintenance

Client intends to hire maintenance crew:

Not trained in botany, unskilled



ENVIRONMENTAL
SURVEY
CONSULTING

Maintenance, Maintenance, Maintenance

Client intends to hire maintenance crew:
Skilled



ENVIRONMENTAL
SURVEY
CONSULTING

Maintenance, Maintenance, Maintenance

Designer's understanding of maintenance



ENVIRONMENTAL
SURVEY
CONSULTING

Maintenance, Maintenance, Maintenance

Ways to get hands-on maintenance experience



Maintenance, Maintenance, Maintenance

Or hire and consult with designers with hands-on gardening and maintenance experience!



ENVIRONMENTAL
SURVEY
CONSULTING

Maintenance, Maintenance, Maintenance: Plants that need zero or little maintenance

Ornamental Grasses

- Big Muhly
- Gulf Muhly
- Sedges



Maintenance, Maintenance, Maintenance: Plants that need zero or little maintenance

Yuccas or succulents

- Red Yucca
- Twistleaf Yucca
- Sotol



ENVIRONMENTAL
SURVEY
CONSULTING

Maintenance, Maintenance, Maintenance: Plants that need zero or little maintenance

Small trees like Texas Redbud or Mexican Plum:

EXCEPTION!

Trees that form colonies:

- Dogwood
- Flameleaf Sumac
- Soapberry



ENVIRONMENTAL
SURVEY
CONSULTING

Maintenance, Maintenance, Maintenance: Plants that need zero or little maintenance

American Beautyberry

- Prefers zero maintenance, no pruning
- Give space for 6 foot diameter
- But be careful! Zero maintenance, but high skill.



ENVIRONMENTAL
SURVEY
CONSULTING

Maintenance, Maintenance, Maintenance: Plants that need zero or little maintenance

Lots of other native woody plants, shrubs,
and trees if:

-not over-irrigated

-planted with plenty of room to grow



ENVIRONMENTAL
SURVEY
CONSULTING

Maintenance, Maintenance, Maintenance: Shrubs that can handle any kind of pruning

- Mountain Laurel
- Evergreen Yaupon
- Deciduous
Yaupon/Possumhaw Holly
- Elbowbush
- Kidneywood



ENVIRONMENTAL
SURVEY
CONSULTING

Maintenance, Maintenance, Maintenance:

Plants that need particular, skilled maintenance

- Engelmann Daisy
- Giant Spiderwort
- Texas Aster
- Maximilian Sunflower



ENVIRONMENTAL
SURVEY
CONSULTING

Maintenance, Maintenance, Maintenance:

Woody plants that respond poorly (look bad) without the right pruning

- Shrubby Boneset/White Mistflower
- Turk's Cap
- American Beautyberry
- Cenizo/Texas Sage!!!



ENVIRONMENTAL
SURVEY
CONSULTING

Maintenance, Maintenance, Maintenance:

Woody perennials that aren't too picky, but look GREAT with just the right pruning

- Pavonia/Rock Rose
- Texas Lantana
- Salvia Greggii



ENVIRONMENTAL
SURVEY
CONSULTING

Maintenance, Maintenance, Maintenance:

Plants that need frequent maintenance

Typically non-natives,
especially non-natives
that could be classified
as invasive, e.g.
Japanese Ligustrum

versus

Plants in the wrong
place, without enough
space.



ENVIRONMENTAL
SURVEY
CONSULTING

Maintenance, Maintenance, Maintenance:

Replanting, replacement, editing, removal

To. Be. Expected!

Set client expectations



ENVIRONMENTAL
SURVEY
CONSULTING

Maintenance, Maintenance, Maintenance:

Replanting, replacement, editing, removal

To. Be. Expected!

Set client expectations



ENVIRONMENTAL
SURVEY
CONSULTING

Maintenance, Maintenance, Maintenance:

Xeriscaping myths

- Myth of lawn as high maintenance



ENVIRONMENTAL
SURVEY
CONSULTING

Misc. Lessons!

Those clients who want “lots of color” on a property with deep shade!



ENVIRONMENTAL
SURVEY
CONSULTING

Misc. Lessons!

Those clients who want “lots of color” on a property with deep shade!



ENVIRONMENTAL
SURVEY
CONSULTING

Misc. Lessons!

Those clients who want “lots of color” on a property with deep shade!

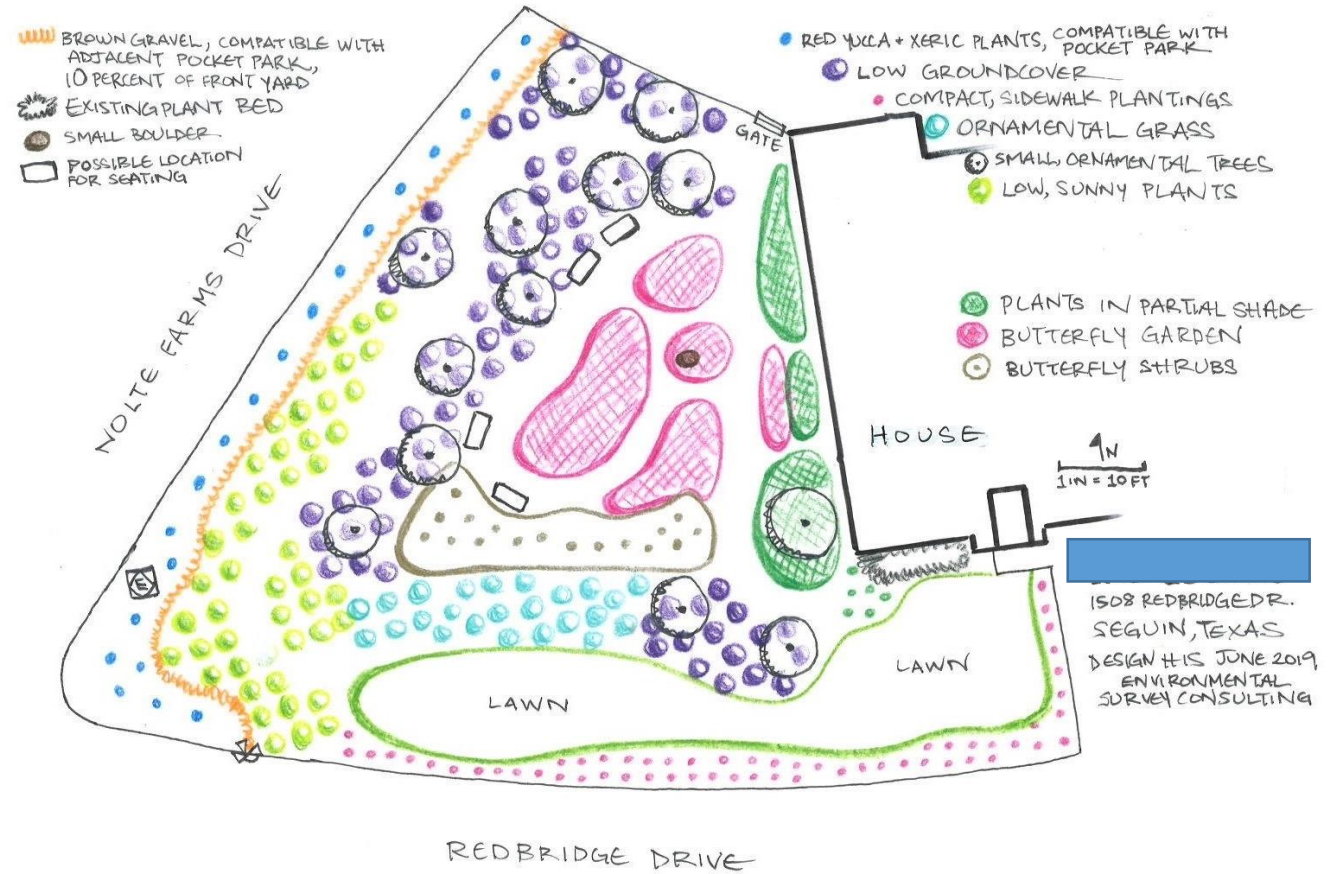
And maybe they have deer too!!!!!!!



ENVIRONMENTAL
SURVEY
CONSULTING

Misc. Lessons!

Hose spigot



ENVIRONMENTAL
SURVEY
CONSULTING

Thank you!

helen.ivor-smith@envirosurvey.com



ENVIRONMENTAL
SURVEY
CONSULTING