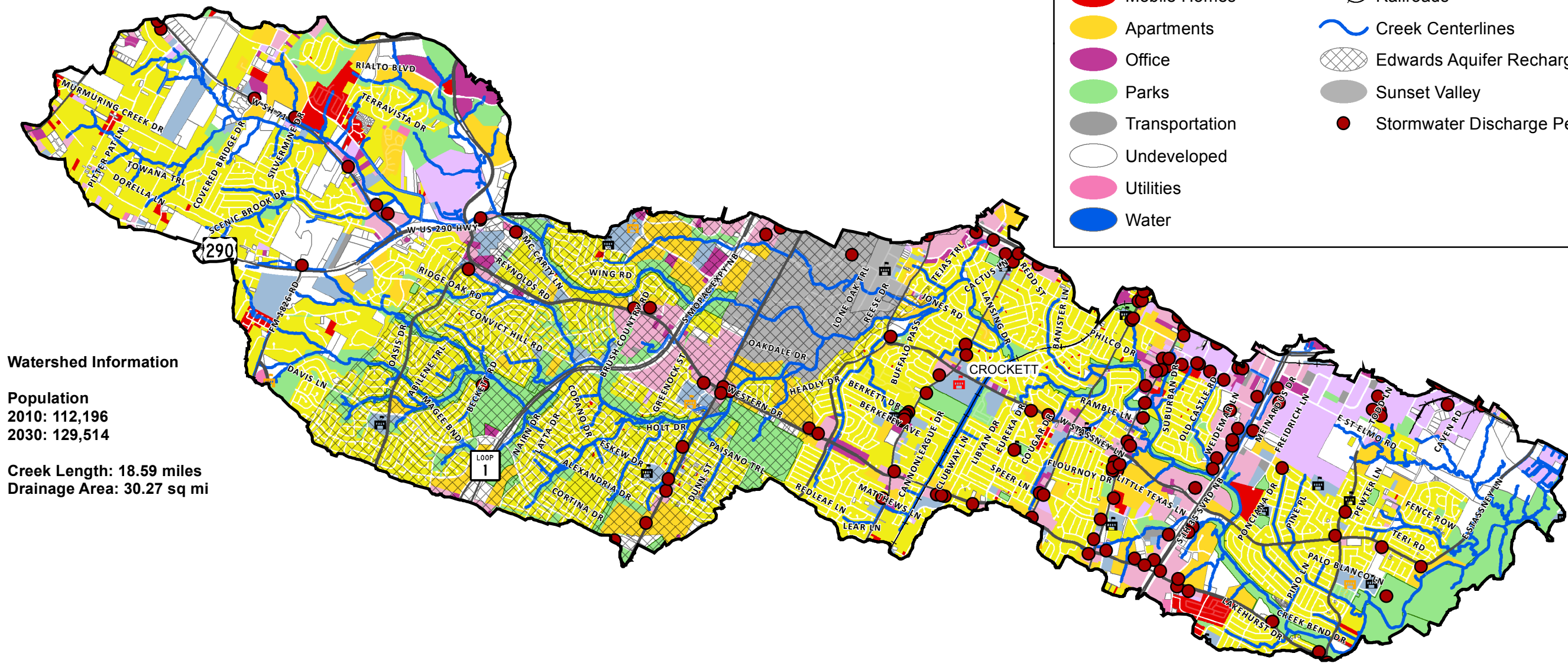


Williamson Creek Watershed Land Use 2015

- | | | | |
|--|-------------------------|--|-------------------------------|
| | Schools & Civic Centers | | Elementary |
| | Commercial | | High School |
| | Industrial | | Junior High; Middle |
| | Houses | | Major Roads |
| | Mobile Homes | | Railroads |
| | Apartments | | Creek Centerlines |
| | Office | | Edwards Aquifer Recharge Zone |
| | Parks | | Sunset Valley |
| | Transportation | | Stormwater Discharge Permits |
| | Undeveloped | | |
| | Utilities | | |
| | Water | | |



Watershed Information

Population
2010: 112,196
2030: 129,514

Creek Length: 18.59 miles
Drainage Area: 30.27 sq mi

This product is for informational purposes and may not have been prepared for or be suitable for legal, engineering, or surveying purposes. It does not represent an on-the-ground survey and represents only the approximate relative location of property boundaries. This product has been produced by the Watershed Protection Department for the sole purpose of geographic reference. No warranty is made by the City of Austin regarding specific accuracy or completeness.

