

# Eanes Creek Watershed

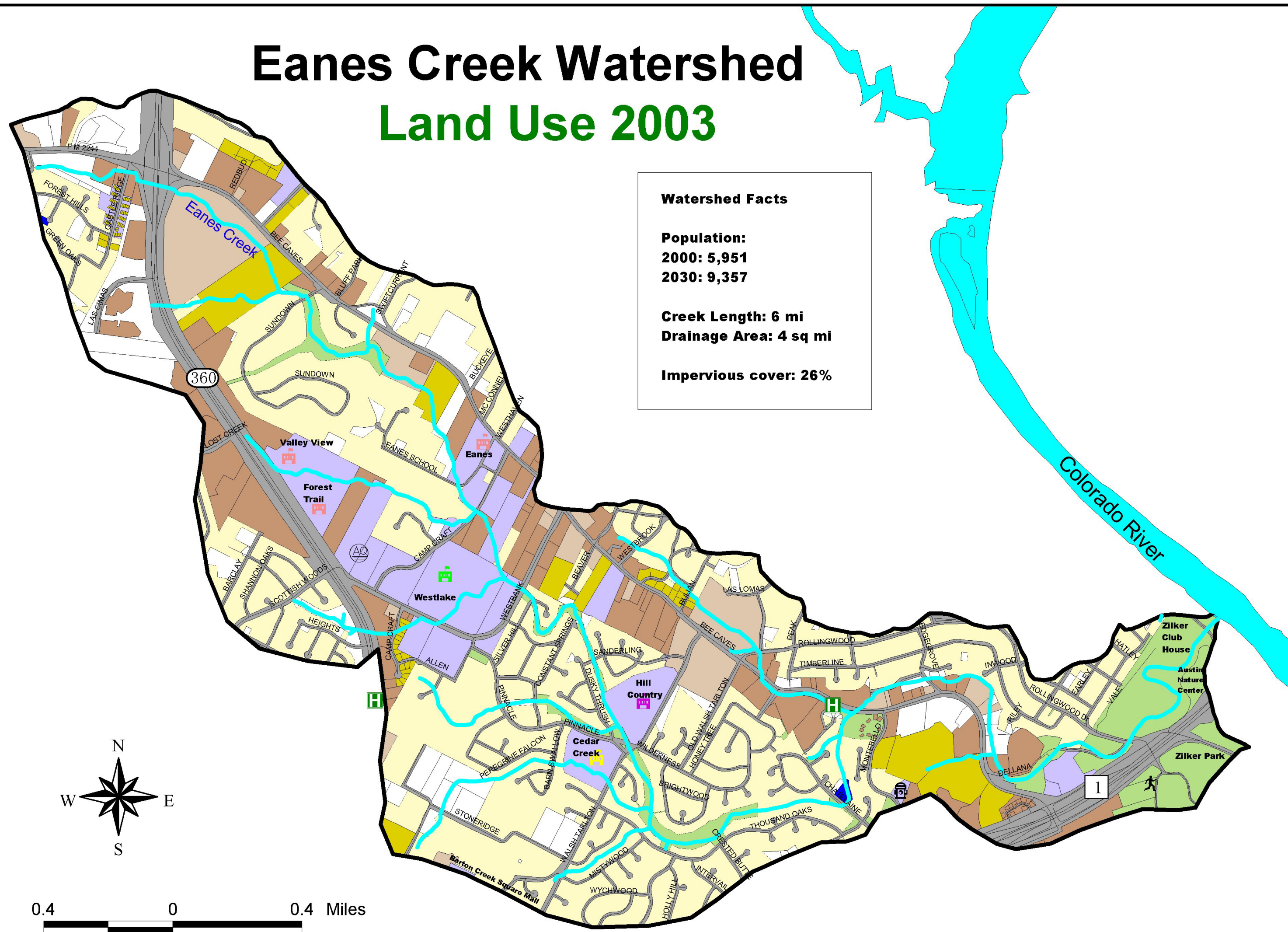
## Land Use 2003

### Watershed Facts

**Population:**  
**2000: 5,951**  
**2030: 9,357**

**Creek Length: 6 mi**  
**Drainage Area: 4 sq mi**

**Impervious cover: 26%**



- Houses
- Parks
- Transportation
- Stores
- Office
- Schools & Community Centers
- Industry
- Undeveloped/Rural
- Utilities
- Eanes creek
- Streets
- Elementary School
- Westlake H.S.
- Hill Country M.S.
- Fire Station
- Austin 360 Reservoir
- Hospital
- Recreation Center



Watershed Protection & Development Review Department  
 The City of Austin produced this map for the sole purpose of use as a work resource. The City of Austin does not warrant the maps &/or information regarding its accuracy or completeness. Reproduction is not permitted without permission from the City of Austin.  
 Watershed Protection & Development Review Department