

**Austin-Bergstrom International Airport  
Aviation Activity Report  
Calendar Year 2020 vs 2019**

**Combined Terminals**

|  | 10/2020        | 10/2019          | Percent Change | 1/2020 - 10/2020 | 1/2019 - 10/2019  | Percent Change |
|--|----------------|------------------|----------------|------------------|-------------------|----------------|
| <b>ABIA</b>                                  |                |                  |                |                  |                   |                |
| <b>Total Passenger Activity</b>              |                |                  |                |                  |                   |                |
| Domestic Enplaned Revenue                    | 234,088        | 689,021          | -66.03%        | 2,466,842        | 6,381,242         | -61.34%        |
| Domestic Deplaned Revenue                    | 237,723        | 700,155          | -66.05%        | 2,483,492        | 6,393,466         | -61.16%        |
| International Enplaned Revenue               | 0              | 16,516           | -100.00%       | 32,294           | 182,405           | -82.30%        |
| International Deplaned Revenue               | 0              | 18,998           | -100.00%       | 35,271           | 190,337           | -81.47%        |
| Domestic Enplaned Non-Revenue                | 7,836          | 14,237           | -44.96%        | 83,008           | 141,364           | -41.28%        |
| Domestic Deplaned Non-Revenue                | 7,800          | 13,284           | -41.28%        | 78,411           | 135,149           | -41.98%        |
| International Enplaned Non-Revenue           | 0              | 138              | -100.00%       | 495              | 1,385             | -64.26%        |
| International Deplaned Non-Revenue           | 0              | 317              | -100.00%       | 428              | 1,487             | -71.22%        |
| Intl Enplaned Pre-Cleared Revenue            | 0              | 4,380            | -100.00%       | 5,483            | 36,629            | -85.03%        |
| Intl Deplaned Pre-Cleared Revenue            | 0              | 4,688            | -100.00%       | 4,626            | 36,476            | -87.32%        |
| Intl Enplaned Pre-Cleared Non-Revenue        | 0              | 53               | -100.00%       | 108              | 450               | -76.00%        |
| Intl Deplaned Pre-Cleared Non-Revenue        | 0              | 63               | -100.00%       | 100              | 464               | -78.45%        |
| South Terminal Domestic Enplaned Revenue     | 9,736          | 53,784           | -81.90%        | 125,659          | 456,308           | -72.46%        |
| South Terminal Domestic Deplaned Revenue     | 10,510         | 55,015           | -80.90%        | 129,685          | 458,733           | -71.73%        |
| South Terminal Domestic Enplaned Non-Revenue | 74             | 178              | -58.43%        | 653              | 1,499             | -56.44%        |
| South Terminal Domestic Deplaned Non-Revenue | 91             | 229              | -60.26%        | 662              | 1,865             | -64.50%        |
| <b>ABIA Passenger Totals</b>                 | <b>507,858</b> | <b>1,571,056</b> | <b>-67.67</b>  | <b>5,447,217</b> | <b>14,419,259</b> | <b>-62.22</b>  |
| <i>ABIA Enplaned Passenger Totals</i>        | <i>251,734</i> | <i>778,307</i>   | <i>-67.66</i>  | <i>2,714,542</i> | <i>7,201,282</i>  | <i>-62.30</i>  |
| <i>ABIA Deplaned Passenger Totals</i>        | <i>256,124</i> | <i>792,749</i>   | <i>-67.69</i>  | <i>2,732,675</i> | <i>7,217,977</i>  | <i>-62.14</i>  |
| <i>ABIA Domestic Passenger Totals</i>        | <i>507,858</i> | <i>1,525,903</i> | <i>-66.72</i>  | <i>5,368,412</i> | <i>13,969,626</i> | <i>-61.57</i>  |
| <i>ABIA International Passenger Totals</i>   | <i>0</i>       | <i>45,153</i>    | <i>-100.00</i> | <i>78,805</i>    | <i>449,633</i>    | <i>-82.47</i>  |

**CURRENT PASSENGER RECORD = 1,643,016 RECORD SET = JULY 2019**

**Total Aircraft Operations**

|                         |               |               |               |                |                |               |
|-------------------------|---------------|---------------|---------------|----------------|----------------|---------------|
| Air Carrier             | 5,685         | 12,732        | -55.35%       | 66,858         | 118,488        | -43.57%       |
| Commuter & Air Taxi     | 1,402         | 1,518         | -7.64%        | 10,959         | 13,227         | -17.15%       |
| Military                | 559           | 545           | 2.57%         | 4,228          | 7,216          | -41.41%       |
| General Aviation        |               |               |               |                |                |               |
| Itinerant               | 3,225         | 4,207         | -23.34%       | 27,540         | 35,387         | -22.17%       |
| Local                   | 0             | 30            | -100.00%      | 268            | 586            | -54.27%       |
| <b>Total G.A.</b>       | <b>3,225</b>  | <b>4,237</b>  | <b>-23.88</b> | <b>27,808</b>  | <b>35,973</b>  | <b>-22.70</b> |
| <b>Total Operations</b> | <b>10,871</b> | <b>19,032</b> | <b>-42.88</b> | <b>109,853</b> | <b>174,904</b> | <b>-37.19</b> |

**Austin-Bergstrom International Airport  
Aviation Activity Report  
Calendar Year 2020 vs 2019**

**By Terminal**

|   | 10/2020        | 10/2019          | Percent Change | 1/2020 - 10/2020 | 1/2019 - 10/2019  | Percent Change |
|---|----------------|------------------|----------------|------------------|-------------------|----------------|
| <b><u>Barbara Jordan Terminal (BJT)</u></b>     |                |                  |                |                  |                   |                |
| <b>Passenger Activity</b>                       |                |                  |                |                  |                   |                |
| Domestic Enplaned Revenue                       | 234,088        | 689,021          | -66.03%        | 2,466,842        | 6,381,242         | -61.34%        |
| Domestic Deplaned Revenue                       | 237,723        | 700,155          | -100.00%       | 2,483,492        | 6,393,466         | -82.30%        |
| International Enplaned Revenue                  | 0              | 16,516           | -100.00%       | 32,294           | 182,405           | -81.47%        |
| International Deplaned Revenue                  | 0              | 18,998           | -100.00%       | 35,271           | 190,337           | -81.47%        |
| Domestic Enplaned Non-Revenue                   | 7,836          | 14,237           | -44.96%        | 83,008           | 141,364           | -41.28%        |
| Domestic Deplaned Non-Revenue                   | 7,800          | 13,284           | -41.28%        | 78,411           | 135,149           | -41.98%        |
| International Enplaned Non-Revenue              | 0              | 138              | -100.00%       | 495              | 1,385             | -64.26%        |
| International Deplaned Non-Revenue              | 0              | 317              | -100.00%       | 428              | 1,487             | -71.22%        |
| Intl Enplaned Pre-Cleared Revenue               | 0              | 4,380            | -100.00%       | 5,483            | 36,629            | -85.03%        |
| Intl Deplaned Pre-Cleared Revenue               | 0              | 4,688            | -100.00%       | 4,626            | 36,476            | -87.32%        |
| Intl Enplaned Pre-Cleared Non-Revenue           | 0              | 53               | -100.00%       | 108              | 450               | -76.00%        |
| Intl Deplaned Pre-Cleared Non-Revenue           | 0              | 63               | -100.00%       | 100              | 464               | -78.45%        |
| <b>Barbara Jordan Terminal Passenger Totals</b> | <b>487,447</b> | <b>1,461,850</b> | <b>-66.66</b>  | <b>5,190,558</b> | <b>13,500,854</b> | <b>-61.55</b>  |
| <i>BJT Enplaned Passenger Totals</i>            | <i>241,924</i> | <i>724,345</i>   | <i>-66.60</i>  | <i>2,588,230</i> | <i>6,743,475</i>  | <i>-61.62</i>  |
| <i>BJT Deplaned Passenger Totals</i>            | <i>245,523</i> | <i>737,505</i>   | <i>-66.71</i>  | <i>2,602,328</i> | <i>6,757,379</i>  | <i>-61.49</i>  |
| <i>BJT Domestic Passenger Totals</i>            | <i>487,447</i> | <i>1,416,697</i> | <i>-65.59</i>  | <i>5,111,753</i> | <i>13,051,221</i> | <i>-60.83</i>  |
| <i>BJT International Passenger Totals</i>       | <i>0</i>       | <i>45,153</i>    | <i>-100.00</i> | <i>78,805</i>    | <i>449,633</i>    | <i>-82.47</i>  |
| <br>  |                |                  |                |                  |                   |                |
| <b><u>South Terminal (ST)</u></b>               |                |                  |                |                  |                   |                |
| <b>Passenger Activity</b>                       |                |                  |                |                  |                   |                |
| South Terminal Domestic Enplaned Revenue        | 9,736          | 53,784           | -81.90%        | 125,659          | 456,308           | -72.46%        |
| South Terminal Domestic Deplaned Revenue        | 10,510         | 55,015           | -80.90%        | 129,685          | 458,733           | -71.73%        |
| South Terminal Domestic Enplaned Non-Revenue    | 74             | 178              | -58.43%        | 653              | 1,499             | -56.44%        |
| South Terminal Domestic Deplaned Non-Revenue    | 91             | 229              | -60.26%        | 662              | 1,865             | -64.50%        |
| <b>South Terminal Passenger Totals</b>          | <b>20,411</b>  | <b>109,206</b>   | <b>-81.31</b>  | <b>256,659</b>   | <b>918,405</b>    | <b>-72.05</b>  |
| <i>ST Enplaned Passenger Totals</i>             | <i>9,810</i>   | <i>53,962</i>    | <i>-81.82</i>  | <i>126,312</i>   | <i>457,807</i>    | <i>-72.41</i>  |
| <i>ST Deplaned Passenger Totals</i>             | <i>10,601</i>  | <i>55,244</i>    | <i>-80.81</i>  | <i>130,347</i>   | <i>460,598</i>    | <i>-71.70</i>  |

**Austin-Bergstrom International Airport  
Aviation Activity Report  
Calendar Year 2020 vs 2019**

|  | 10/2020           | 10/2019           | Percent Change | 1/2020 - 10/2020   | 1/2019 - 10/2019   | Percent Change |
|--|-------------------|-------------------|----------------|--------------------|--------------------|----------------|
| <b><u>Total Cargo Activity</u></b>               |                   |                   |                |                    |                    |                |
| <b>Mail</b>                                      |                   |                   |                |                    |                    |                |
| Domestic Enplaned Mail                           | 220,947           | 189,045           | 16.88%         | 1,777,933          | 1,866,256          | -4.73%         |
| Domestic Deplaned Mail                           | 551,299           | 783,449           | -29.63%        | 4,445,309          | 6,692,426          | -33.58%        |
| International Enplaned Mail                      | 0                 | 0                 | 0.00%          | 0                  | 0                  | 0.00%          |
| International Deplaned Mail                      | 0                 | 0                 | 0.00%          | 0                  | 110,830            | -100.00%       |
| South Terminal-Domestic Enplaned Mail            | 0                 | 0                 | 0.00%          | 0                  | 0                  | 0.00%          |
| South Terminal-Domestic Deplaned Mail            | 0                 | 0                 | 0.00%          | 0                  | 0                  | 0.00%          |
| <b>Mail Totals</b>                               | <b>772,246</b>    | <b>972,494</b>    | <b>-20.59</b>  | <b>6,223,242</b>   | <b>8,669,512</b>   | <b>-28.22</b>  |
| <b>Cargo</b>                                     |                   |                   |                |                    |                    |                |
| Domestic Enplaned Cargo                          | 8,836,880         | 5,103,655         | 73.15%         | 64,758,944         | 47,943,606         | 35.07%         |
| Domestic Deplaned Cargo                          | 12,354,606        | 8,664,751         | 42.58%         | 91,047,268         | 67,587,087         | 34.71%         |
| International Enplaned Cargo                     | 24,828            | 359,777           | -93.10%        | 1,112,679          | 3,752,657          | -70.35%        |
| International Deplaned Cargo                     | 7,481             | 211,997           | -96.47%        | 540,404            | 2,766,755          | -80.47%        |
| South Terminal-Domestic Enplaned Cargo           | 0                 | 0                 | 0.00%          | 0                  | 0                  | 0.00%          |
| South Terminal-Domestic Deplaned Cargo           | 0                 | 0                 | 0.00%          | 0                  | 0                  | 0.00%          |
| <b>Cargo Totals</b>                              | <b>21,223,795</b> | <b>14,340,180</b> | <b>48.00</b>   | <b>157,459,295</b> | <b>122,050,105</b> | <b>29.01</b>   |
| <b>Belly Freight</b>                             |                   |                   |                |                    |                    |                |
| Domestic Enplaned Belly Freight                  | 179,225           | 327,341           | -45.25%        | 2,260,904          | 3,163,011          | -28.52%        |
| Domestic Deplaned Belly Freight                  | 296,756           | 516,893           | -42.59%        | 3,495,737          | 5,160,347          | -32.26%        |
| International Enplaned Belly Freight             | 0                 | 378,600           | -100.00%       | 1,035,039          | 3,396,067          | -69.52%        |
| International Deplaned Belly Freight             | 0                 | 806,739           | -100.00%       | 2,056,175          | 6,308,923          | -67.41%        |
| South Terminal-Domestic Enplaned Belly Frght     | 0                 | 0                 | 0.00%          | 0                  | 0                  | 0.00%          |
| South Terminal-Domestic Deplaned Belly Frght     | 0                 | 0                 | 0.00%          | 0                  | 0                  | 0.00%          |
| <b>Belly Freight Totals</b>                      | <b>475,981</b>    | <b>2,029,573</b>  | <b>-76.55</b>  | <b>8,847,855</b>   | <b>18,028,348</b>  | <b>-50.92</b>  |
| <b>Cargo Totals (Mail, Cargo, Belly Freight)</b> | <b>22,472,022</b> | <b>17,342,247</b> | <b>29.58</b>   | <b>172,530,392</b> | <b>148,747,965</b> | <b>15.99</b>   |
| <i>Enplaned Cargo Totals</i>                     | <i>9,261,880</i>  | <i>6,358,418</i>  | <i>45.66</i>   | <i>70,945,499</i>  | <i>60,121,597</i>  | <i>18.00</i>   |
| <i>Deplaned Cargo Totals</i>                     | <i>13,210,142</i> | <i>10,983,829</i> | <i>20.27</i>   | <i>101,584,893</i> | <i>88,626,368</i>  | <i>14.62</i>   |
| <i>Domestic Cargo Totals</i>                     | <i>22,439,713</i> | <i>15,585,134</i> | <i>43.98</i>   | <i>167,786,095</i> | <i>132,412,733</i> | <i>26.71</i>   |
| <i>International Cargo Totals</i>                | <i>32,309</i>     | <i>1,757,113</i>  | <i>-98.16</i>  | <i>4,744,297</i>   | <i>16,335,232</i>  | <i>-70.96</i>  |

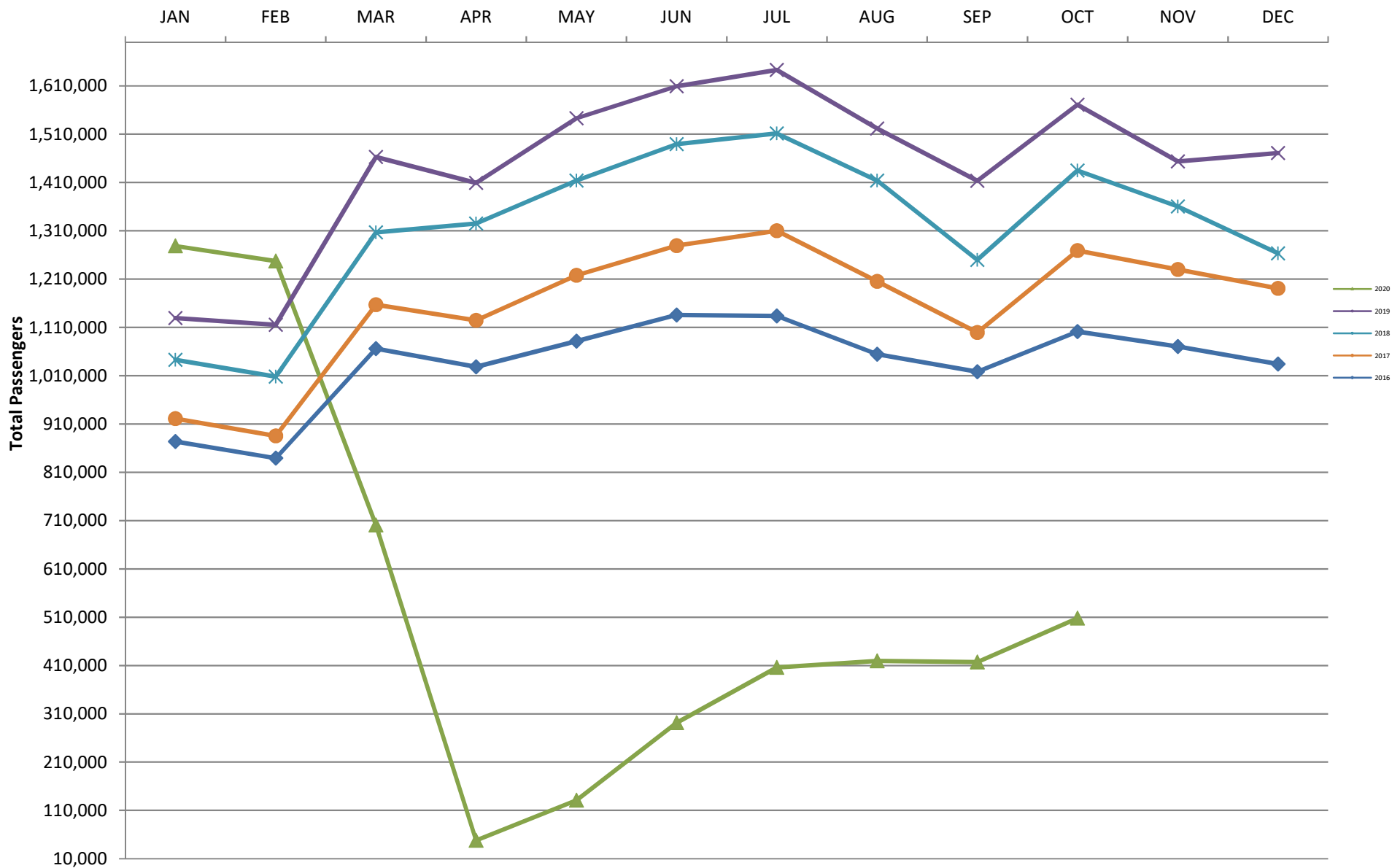
CURRENT CARGO RECORD = 40,215,518

RECORD SET = MARCH 2001

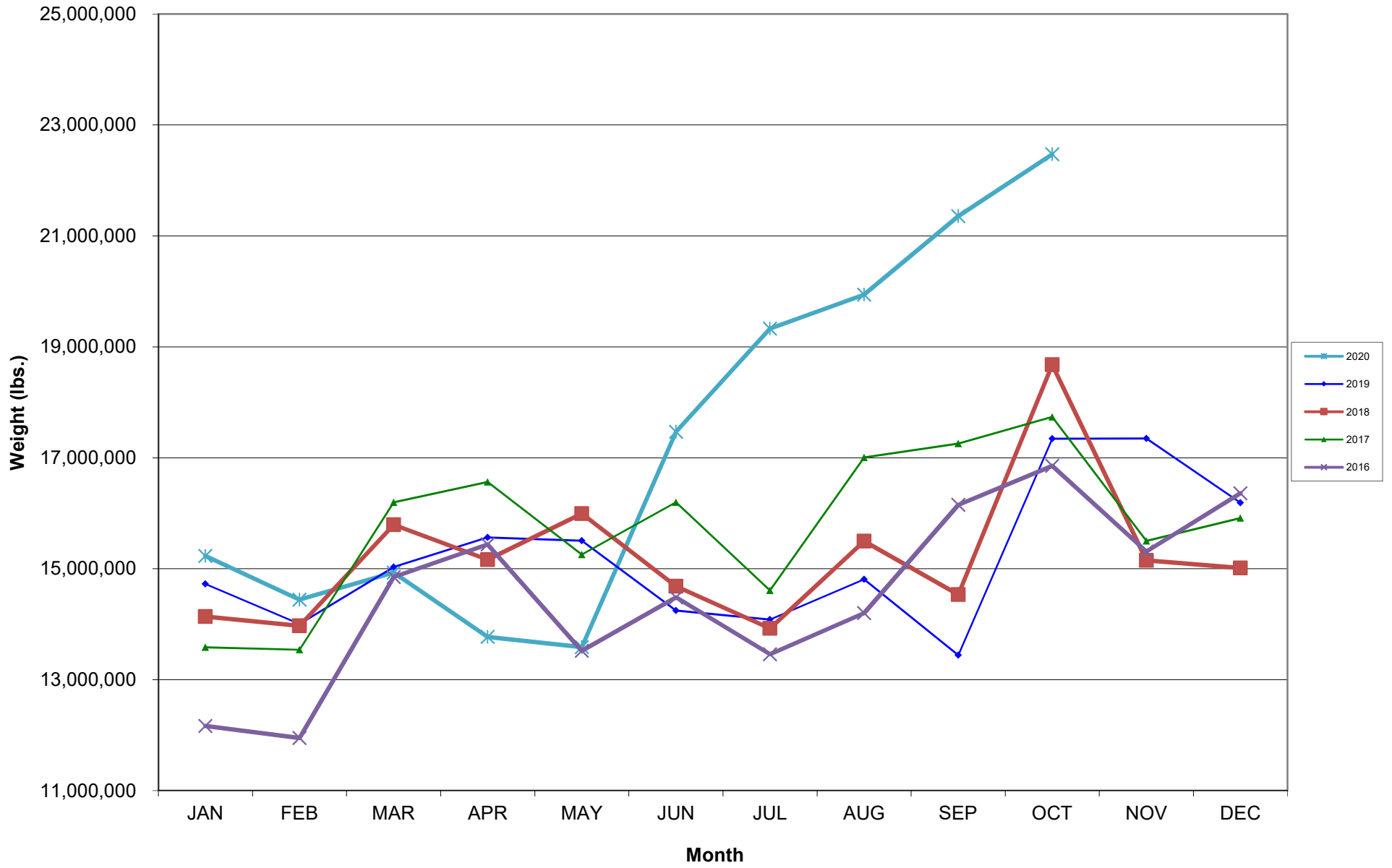
**AUS – Airline Codes**  
October 2020

| <b><u>Code</u></b> | <b><u>Carrier</u></b>                |
|--------------------|--------------------------------------|
| AS                 | Alaska Airlines, Inc.                |
| G4                 | Allegiant Air, LLC                   |
| AA                 | American Airlines, Inc.              |
| DL                 | Delta Air Lines                      |
| F9                 | Frontier Airlines, Inc.              |
| B6                 | JetBlue Airways Corp.                |
| WN                 | Southwest Airlines                   |
| NK                 | Spirit Airlines, Inc.                |
| SY                 | Sun Country Airlines/MN Airlines LLC |
| WQ                 | Swift Air, LLC                       |
| UA                 | United Airlines, Inc.                |

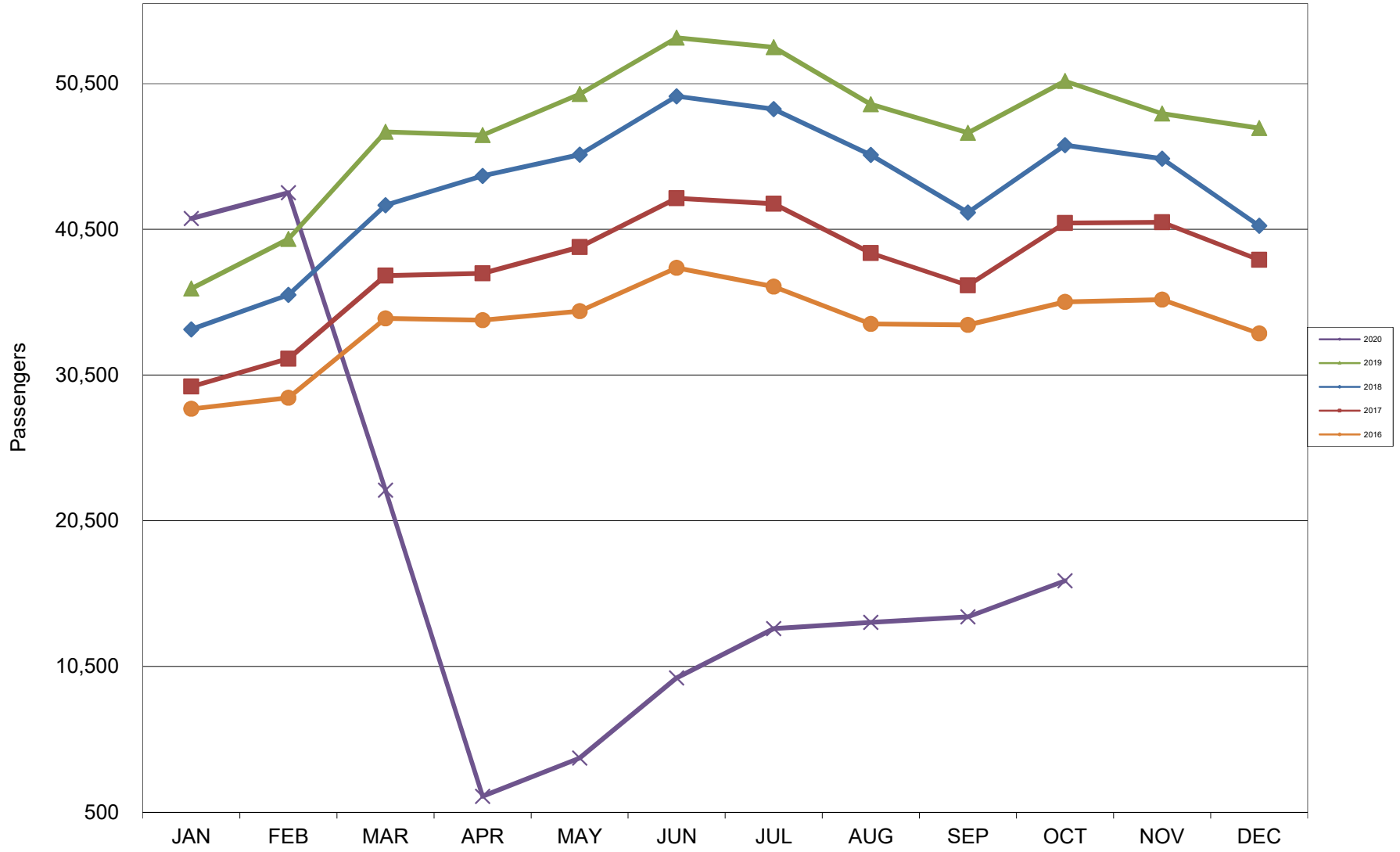
# AUSTIN PASSENGER TRAFFIC 5 Year Trend



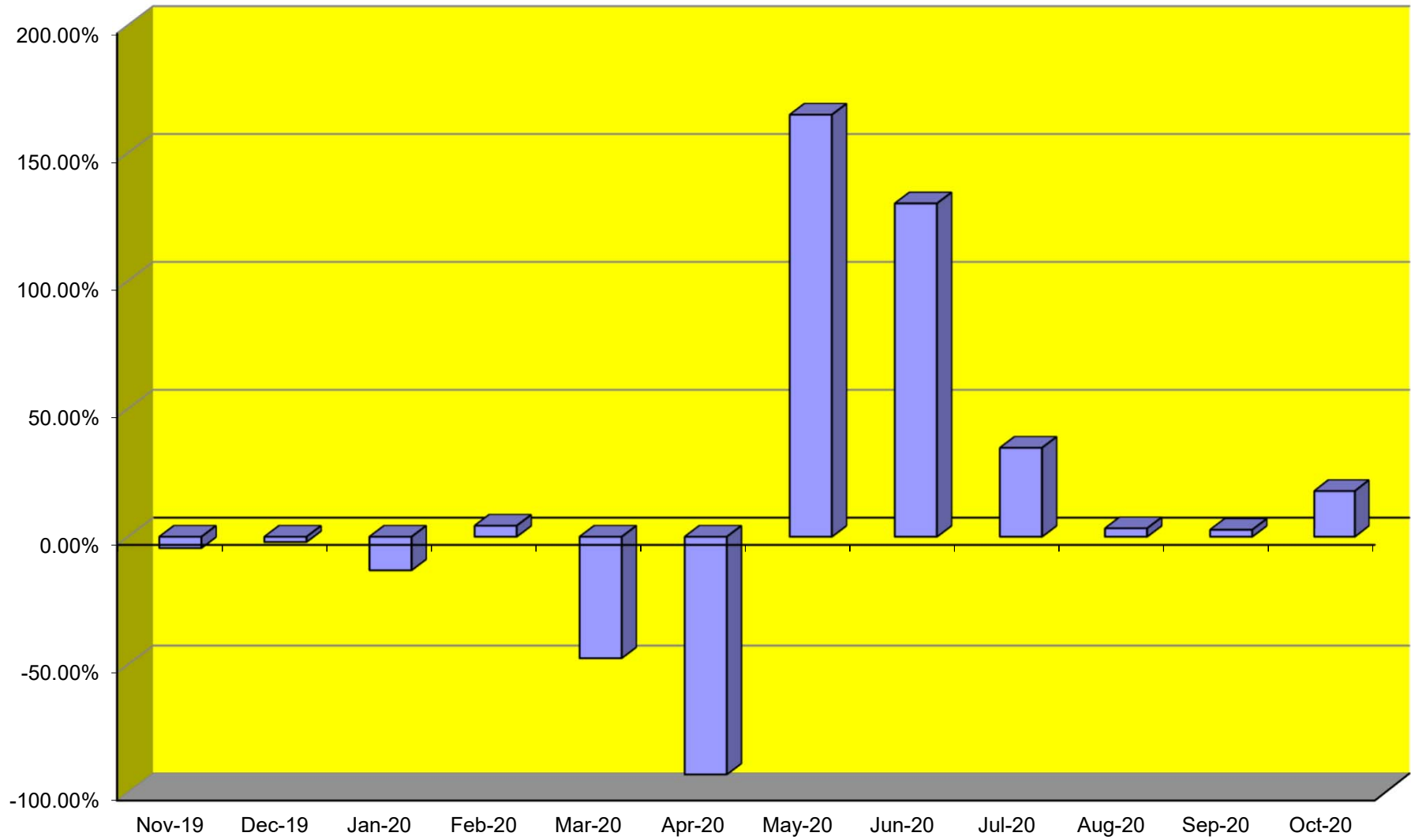
### TOTAL CARGO POUNDAGE - AUSTIN, TEXAS



Average Daily Passengers

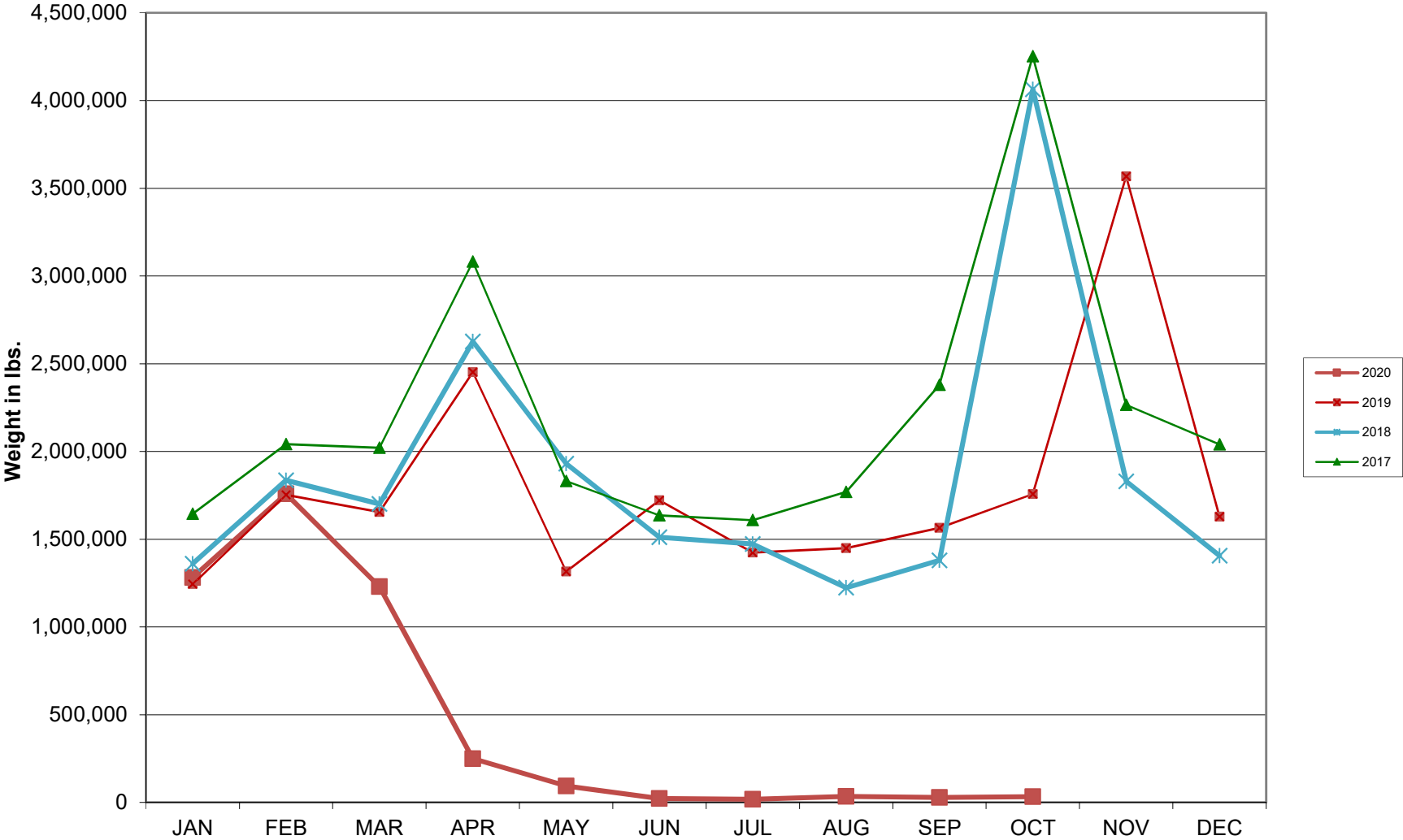


**Monthly % Change in Average Daily Passengers**

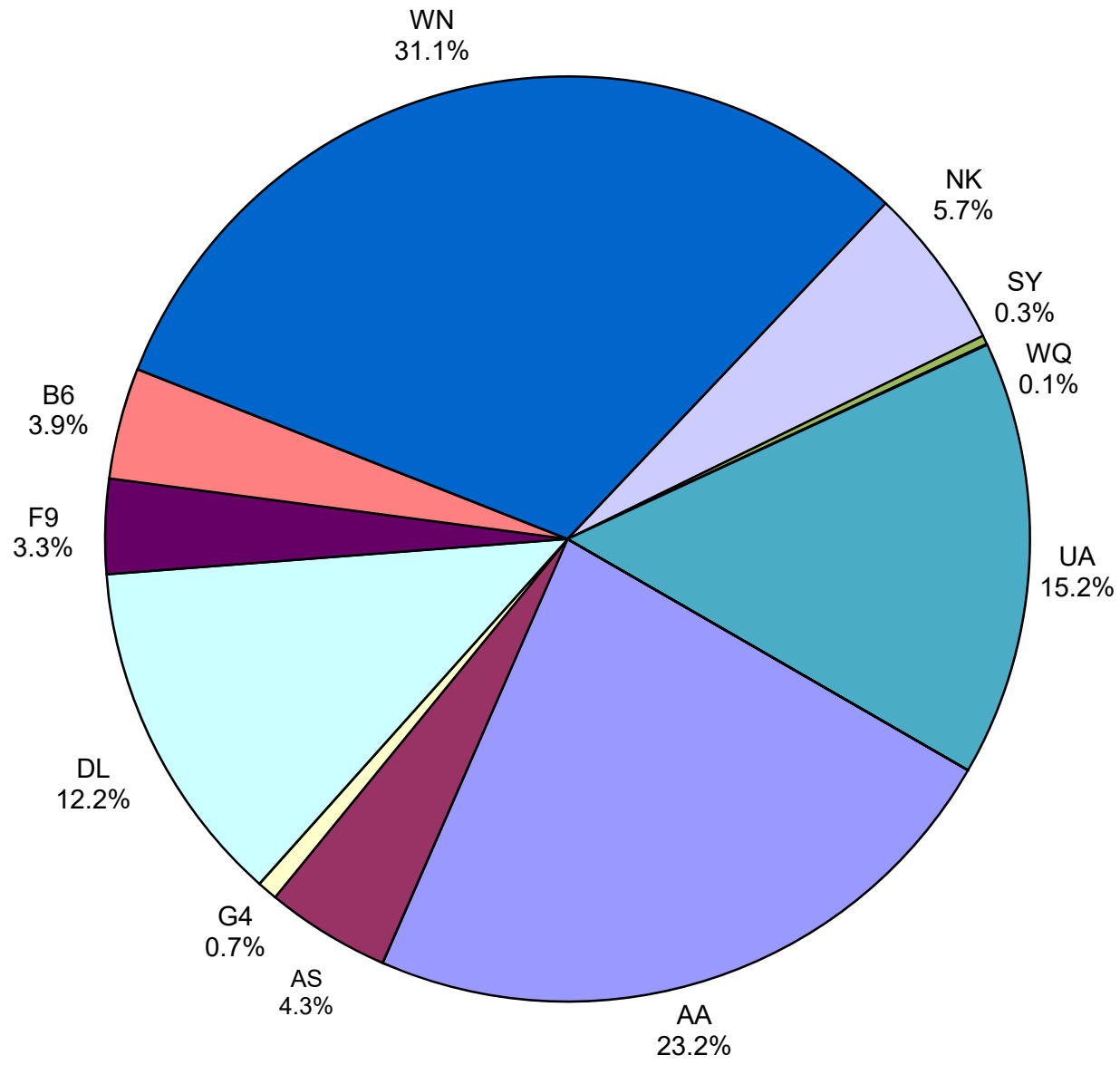




# HISTORY OF INTERNATIONAL AIR CARGO



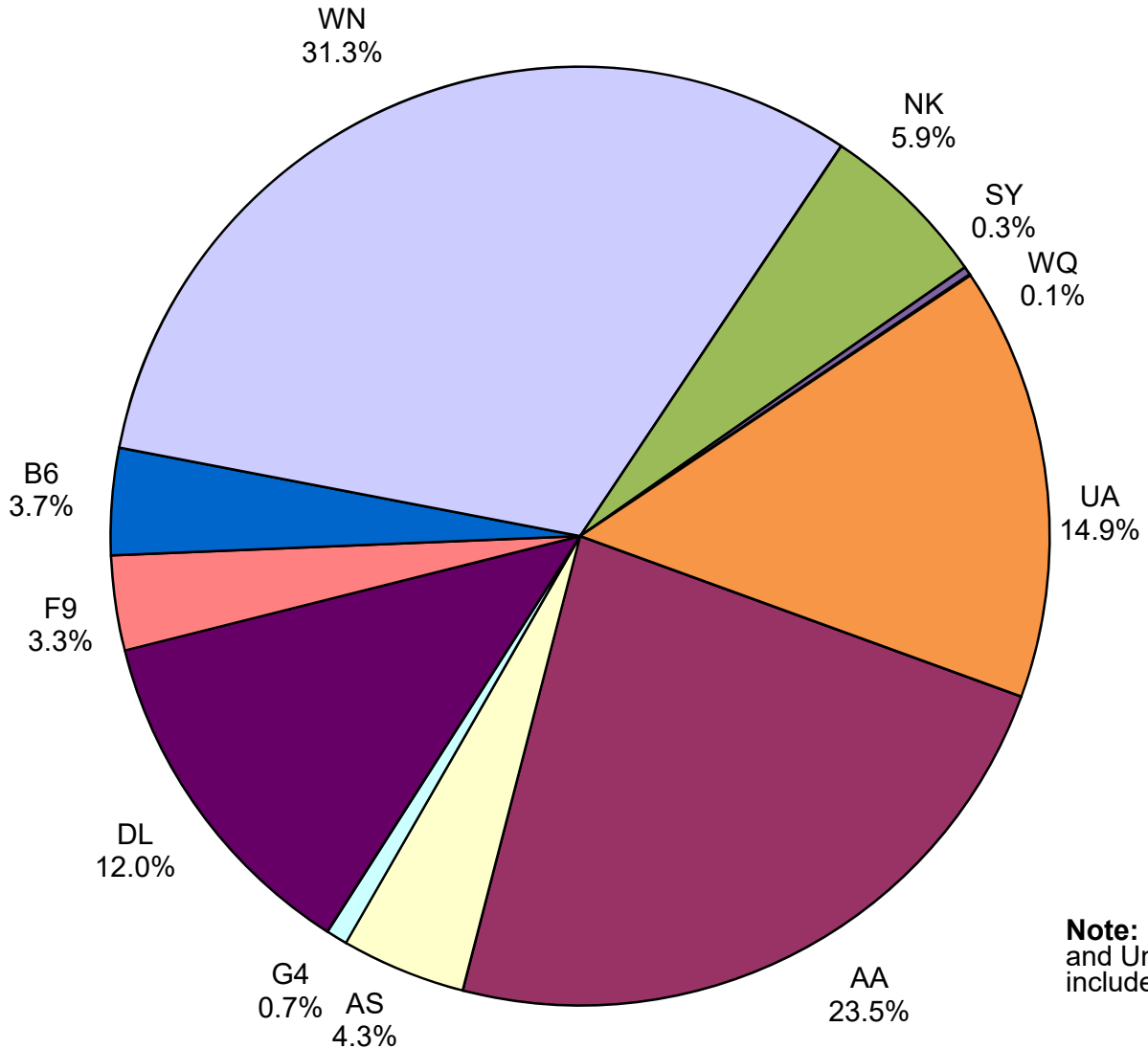
# Total Passengers October 2020



**Other:**

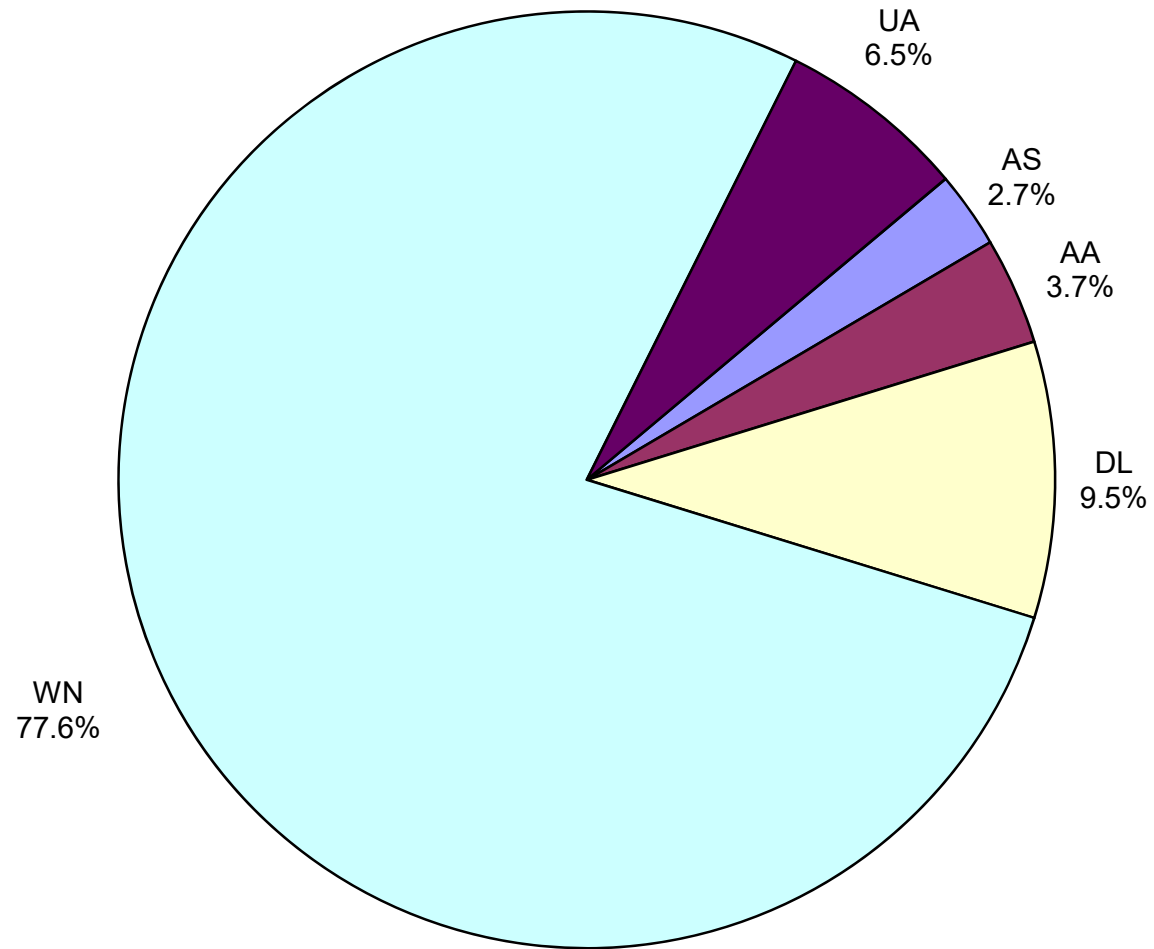
**Note:** American, Delta and United Airlines percentages include Affiliates.

**All Passenger Carriers  
Enplaned Revenue Passengers  
October 2020**



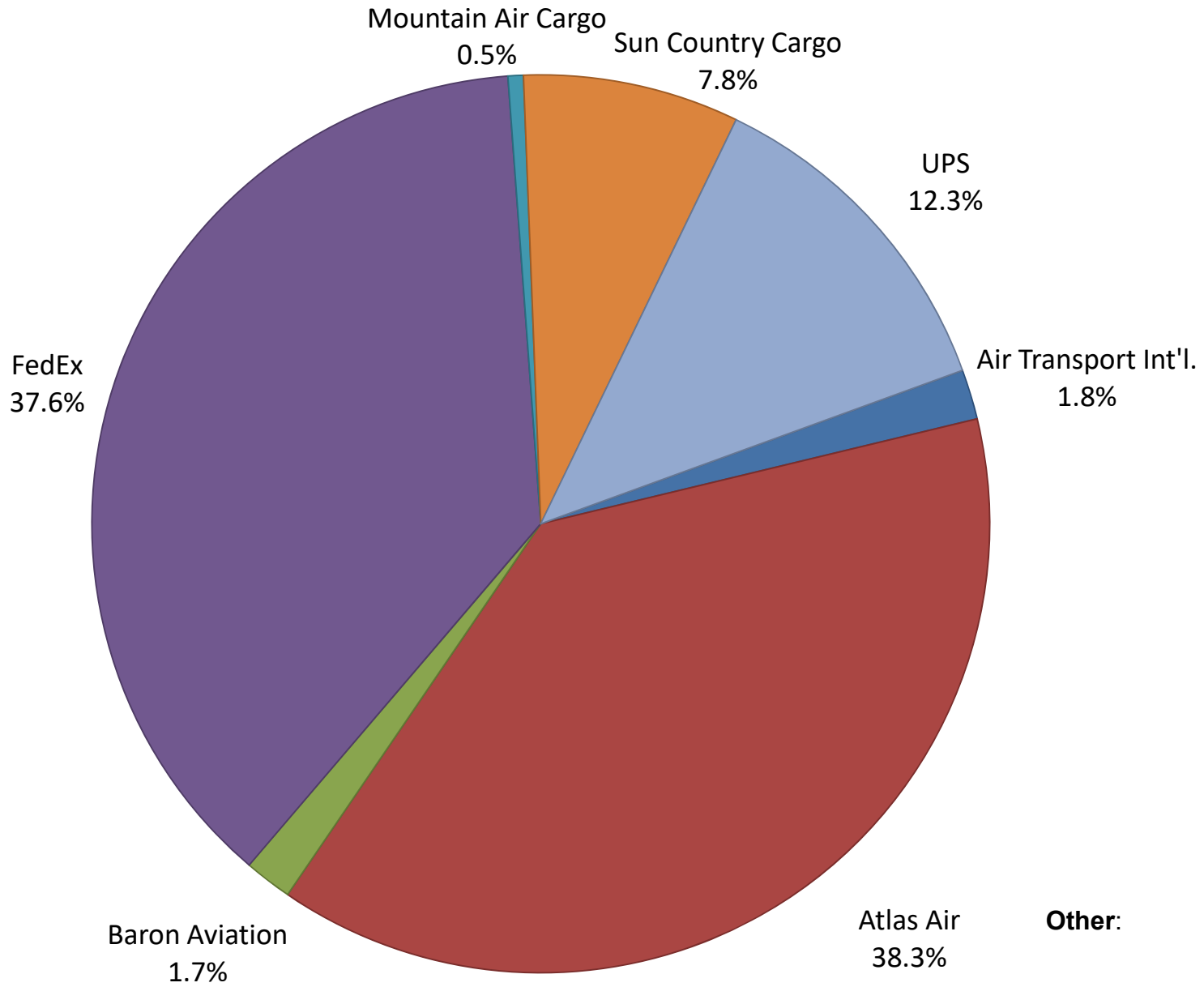
**Note:** American/US Airways, Delta and United Airlines percentages include Affiliates.

**AUS Belly Freight Market Shares  
October 2020**

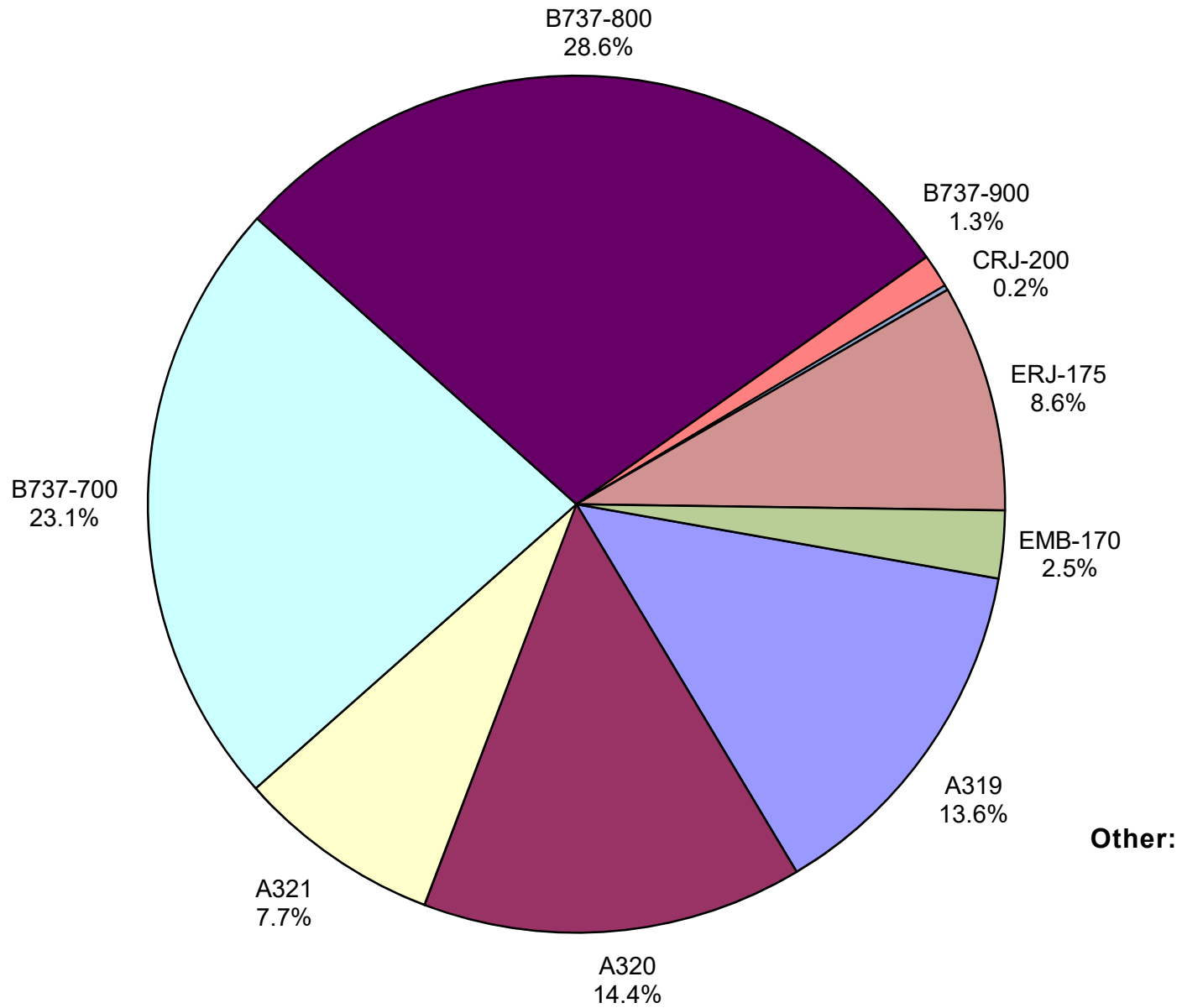


**Other =**

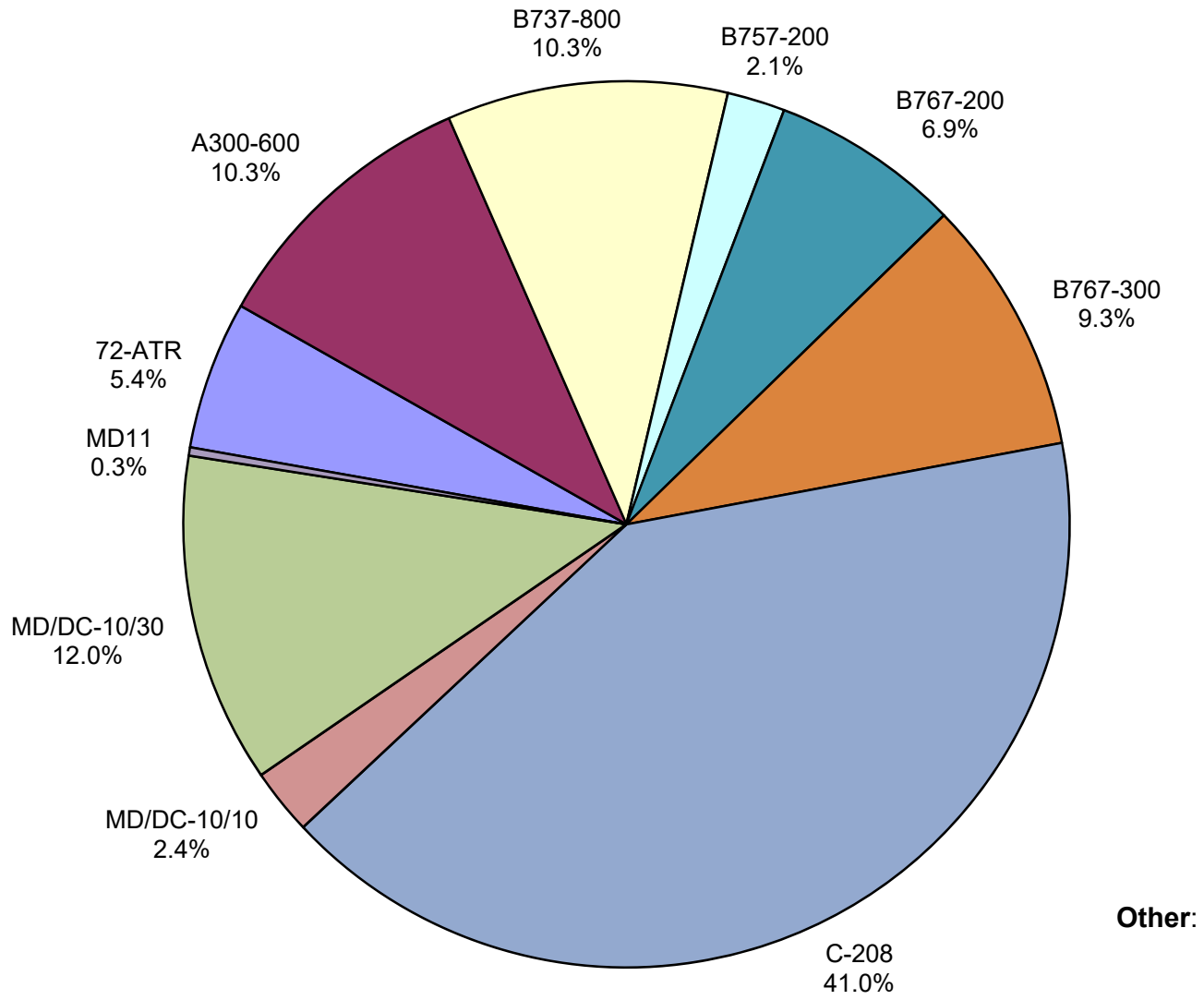
# Air Cargo Market Share October 2020



**AUS Scheduled Passenger Aircraft Fleet Mix  
October 2020**



# AUS Scheduled Cargo Aircraft Fleet Mix October 2020



## Austin-Bergstrom International Airport Pax Detail Report - October, 2020

| Company   | Period         |                  |                   |               | YTD              |                   |                   |               | 2020 Share    | 2019 Share    | Share Diff |
|---|----------------|------------------|-------------------|---------------|------------------|-------------------|-------------------|---------------|---------------|---------------|------------|
|   | 10/2020        | 10/2019          | Difference        | Change        | YTD 2020         | YTD 2019          | Difference        | Change        |               |               |            |
| ABC Aerolineas S.A. de C.V.                           | 0              | 0                | 0                 | 0.0           | 0                | 0                 | 0                 | 0.0           | 0.0           | 0.0           | 0.0        |
| Aeroenlaces Nacionales, SA DE CV                      | 0              | 164              | -164              | -100.0        | 197              | 164               | 33                | 20.1          | 0.0           | 0.0           | 0.0        |
| Aerovias de Mexico S.A. de C.V. (DIP)                 | 0              | 0                | 0                 | 0.0           | 378              | 0                 | 378               | 0.0           | 0.0           | 0.0           | 0.0        |
| Aerovias de Mexico S.A. de C.V. Pre Bankruptcy        | 0              | 4,720            | -4,720            | -100.0        | 9,915            | 38,306            | -28,391           | -74.1         | 0.2           | 0.3           | -0.1       |
| Air Canada  | 0              | 7,055            | -7,055            | -100.0        | 10,317           | 61,273            | -50,956           | -83.2         | 0.2           | 0.4           | -0.2       |
| Air New Zealand Limited                               | 0              | 0                | 0                 | 0.0           | 0                | 302               | -302              | -100.0        | 0.0           | 0.0           | 0.0        |
| Alaska Airlines INC                                   | 22,108         | 59,889           | -37,781           | -63.1         | 222,090          | 523,496           | -301,406          | -57.6         | 4.1           | 3.6           | 0.5        |
| Allegiant Air LLC                                     | 3,618          | 9,121            | -5,503            | -60.3         | 70,475           | 157,597           | -87,122           | -55.3         | 1.3           | 1.1           | 0.2        |
| American Airlines INC                                 | 117,901        | 276,896          | -158,995          | -57.4         | 1,132,959        | 2,563,464         | -1,430,505        | -55.8         | 20.8          | 17.8          | 3.0        |
| American Eagle Airlines                               | 0              | 0                | 0                 | 0.0           | 0                | 0                 | 0                 | 0.0           | 0.0           | 0.0           | 0.0        |
| Atlas Air INC   | 0              | 0                | 0                 | 0.0           | 0                | 0                 | 0                 | 0.0           | 0.0           | 0.0           | 0.0        |
| Branson AirExpress LLC                                | 0              | 0                | 0                 | 0.0           | 0                | 0                 | 0                 | 0.0           | 0.0           | 0.0           | 0.0        |
| British Airways PLC                                   | 0              | 15,784           | -15,784           | -100.0        | 29,217           | 158,202           | -128,985          | -81.5         | 0.5           | 1.1           | -0.6       |
| Concesionaria Vuela Compañía de Aviación, S.A.P.I. de | 0              | 0                | 0                 | 0.0           | 0                | 434               | -434              | -100.0        | 0.0           | 0.0           | 0.0        |
| Delta Air Lines                                       | 61,803         | 212,138          | -150,335          | -70.9         | 687,703          | 1,969,517         | -1,281,814        | -65.1         | 12.6          | 13.7          | -1.1       |
| Deutsche Lufthansa AG                                 | 0              | 7,817            | -7,817            | -100.0        | 15,883           | 50,222            | -34,339           | -68.4         | 0.3           | 0.3           | 0.0        |
| Express Jet Airlines, Inc.                            | 0              | 0                | 0                 | 0.0           | 0                | 0                 | 0                 | 0.0           | 0.0           | 0.0           | 0.0        |
| Frontier Airlines INC                                 | 16,793         | 100,085          | -83,292           | -83.2         | 186,184          | 757,590           | -571,406          | -75.4         | 3.4           | 5.3           | -1.9       |
| IFL Group Inc   | 0              | 0                | 0                 | 0.0           | 0                | 0                 | 0                 | 0.0           | 0.0           | 0.0           | 0.0        |
| JetBlue Airways Corporation                           | 19,753         | 46,448           | -26,695           | -57.5         | 169,865          | 471,573           | -301,708          | -64.0         | 3.1           | 3.3           | -0.2       |
| Kalitta Charters LLC                                  | 0              | 0                | 0                 | 0.0           | 0                | 0                 | 0                 | 0.0           | 0.0           | 0.0           | 0.0        |
| Miami Air International INC Pre Bankruptcy            | 0              | 546              | -546              | -100.0        | 121              | 1,415             | -1,294            | -91.4         | 0.0           | 0.0           | 0.0        |
| Norwegian Air UK LTD                                  | 0              | 6,835            | -6,835            | -100.0        | 3,474            | 62,435            | -58,961           | -94.4         | 0.1           | 0.4           | -0.3       |
| Scandinavian Airlines                                 | 0              | 0                | 0                 | 0.0           | 0                | 423               | -423              | -100.0        | 0.0           | 0.0           | 0.0        |
| Southwest Airlines                                    | 157,915        | 518,431          | -360,516          | -69.5         | 1,828,207        | 4,868,731         | -3,040,524        | -62.5         | 33.6          | 33.8          | -0.2       |
| Spirit Airlines Inc                                   | 28,876         | 72,749           | -43,873           | -60.3         | 367,507          | 614,457           | -246,950          | -40.2         | 6.7           | 4.3           | 2.4        |
| Sun Country Airlines/MN Airlines LLC                  | 1,560          | 3,458            | -1,898            | -54.9         | 10,092           | 32,646            | -22,554           | -69.1         | 0.2           | 0.2           | 0.0        |
| Swift Air LLC   | 204            | 0                | 204               | 0.0           | 1,132            | 1,847             | -715              | -38.7         | 0.0           | 0.0           | 0.0        |
| United Airlines INC                                   | 77,327         | 226,791          | -149,464          | -65.9         | 701,501          | 2,067,451         | -1,365,950        | -66.1         | 12.9          | 14.3          | -1.4       |
| Vacation Express                                      | 0              | 0                | 0                 | 0.0           | 0                | 1,750             | -1,750            | -100.0        | 0.0           | 0.0           | 0.0        |
| VIA Airlines, INC                                     | 0              | 0                | 0                 | 0.0           | 0                | 3,218             | -3,218            | -100.0        | 0.0           | 0.0           | 0.0        |
| WestJet   | 0              | 2,129            | -2,129            | -100.0        | 0                | 12,746            | -12,746           | -100.0        | 0.0           | 0.1           | -0.1       |
| <b>Report Totals</b>                                  | <b>507,858</b> | <b>1,571,056</b> | <b>-1,063,198</b> | <b>-67.7%</b> | <b>5,447,217</b> | <b>14,419,259</b> | <b>-8,972,042</b> | <b>-62.2%</b> | <b>100.0%</b> | <b>100.0%</b> |            |

### Statistics Included in Report

Domestic Passengers: Enplaned Revenue, Deplaned Revenue, Enplaned Non-Revenue, Deplaned Non-Revenue

International Passengers: Enplaned Revenue, Deplaned Revenue, Enplaned Non-Revenue, Deplaned Non-Revenue

International Pre-Cleared Passengers: Enplaned Revenue, Deplaned Revenue, Enplaned Non-Revenue, Deplaned Non-Revenue

South Terminal Domestic Passengers: Enplaned Revenue, Deplaned Revenue, Enplaned Non-Revenue, Deplaned Non-Revenue



# Austin-Bergstrom International Airport

## Summary Landings Report

### Landing Type: Total

| Month                      | 2020   |               | 2019   |                | 2018   |               | % Change 2020- 2019 |          | % Change 2019- 2018 |        |
|----------------------------|--------|---------------|--------|----------------|--------|---------------|---------------------|----------|---------------------|--------|
|                            | Count  | Weight        | Count  | Weight         | Count  | Weight        | Count               | Weight   | Count               | Weight |
| January                    | 5,762  | 812,175,948   | 5,348  | 733,746,679    | 5,086  | 688,923,110   | 7.98%               | 10.62%   | 4.78%               | 4.93%  |
| February                   | 5,382  | 764,833,023   | 5,040  | 692,708,930    | 4,706  | 637,500,756   | 8.41%               | 10.66%   | 7.66%               | 9.36%  |
| March                      | 5,278  | 742,099,772   | 5,964  | 825,483,911    | 5,643  | 760,648,260   | -11.17%             | -9.35%   | 5.38%               | 6.89%  |
| April                      | 1,884  | 264,508,162   | 5,899  | 815,621,798    | 5,797  | 793,367,736   | -68.87%             | -68.74%  | -0.34%              | 0.56%  |
| May                        | 1,608  | 223,266,578   | 6,294  | 881,747,150    | 6,117  | 831,431,763   | -76.11%             | -76.59%  | -1.13%              | 0.20%  |
| June                       | 2,119  | 293,669,395   | 6,322  | 890,410,020    | 6,211  | 852,438,818   | -68.98%             | -69.80%  | -2.30%              | -1.73% |
| July                       | 3,401  | 458,639,882   | 6,551  | 915,103,306    | 6,346  | 869,502,671   | -48.58%             | -50.20%  | -0.12%              | 0.54%  |
| August                     | 3,390  | 473,872,571   | 6,447  | 906,499,773    | 6,245  | 861,046,997   | -46.77%             | -46.57%  | -0.96%              | -0.55% |
| September                  | 2,791  | 378,925,681   | 6,020  | 848,899,951    | 5,737  | 790,731,351   | -54.77%             | -56.54%  | 1.37%               | 2.73%  |
| October                    | 2,972  | 409,225,230   | 6,459  | 916,700,076    | 6,078  | 846,310,860   | -54.36%             | -55.39%  | 1.67%               | 2.68%  |
| November                   | 0      | 0             | 5,924  | 836,527,780    | 5,684  | 780,994,101   | -100.00%            | -100.00% | 3.81%               | 4.20%  |
| December                   | 0      | 0             | 6,078  | 848,973,148    | 5,600  | 761,317,385   | -100.00%            | -100.00% | 11.36%              | 13.06% |
| <b>Totals For Selected</b> |        |               |        |                |        |               |                     |          |                     |        |
| <b>Period</b>              | 34,587 | 4,821,216,242 | 60,344 | 8,426,921,594  | 57,966 | 7,931,902,322 | -42.68%             | -42.79%  | 4.10%               | 6.24%  |
| <b>Yearly Totals</b>       | 34,587 | 4,821,216,242 | 72,346 | 10,112,422,522 | 69,250 | 9,474,213,808 | -52.19%             | -52.32%  | 4.47%               | 6.74%  |