

Child Friendly Design

Landscaping to protect and conserve Austin's water





Copper Canyon Daisy



Artimisia 'Powis Castle'

Though there is no demonstration garden to visit you can get some ideas about ways to encourage a child to enjoy the outdoors by planting a sensory garden. Just add some fuzzy Lamb's Ear or Spineless Cactus to touch, herbs to smell and excite the taste buds, Inland Sea Oats to rustle in the wind, and some unique shaped-flowers like Shrimp Plant and Batface Cuphea to see and appreciate. This is one of the few designs that calls for a substantial amount of grass so there is open space to run and play.



Mexican Oregano



Batface Cuphea



Inland Sea Oats



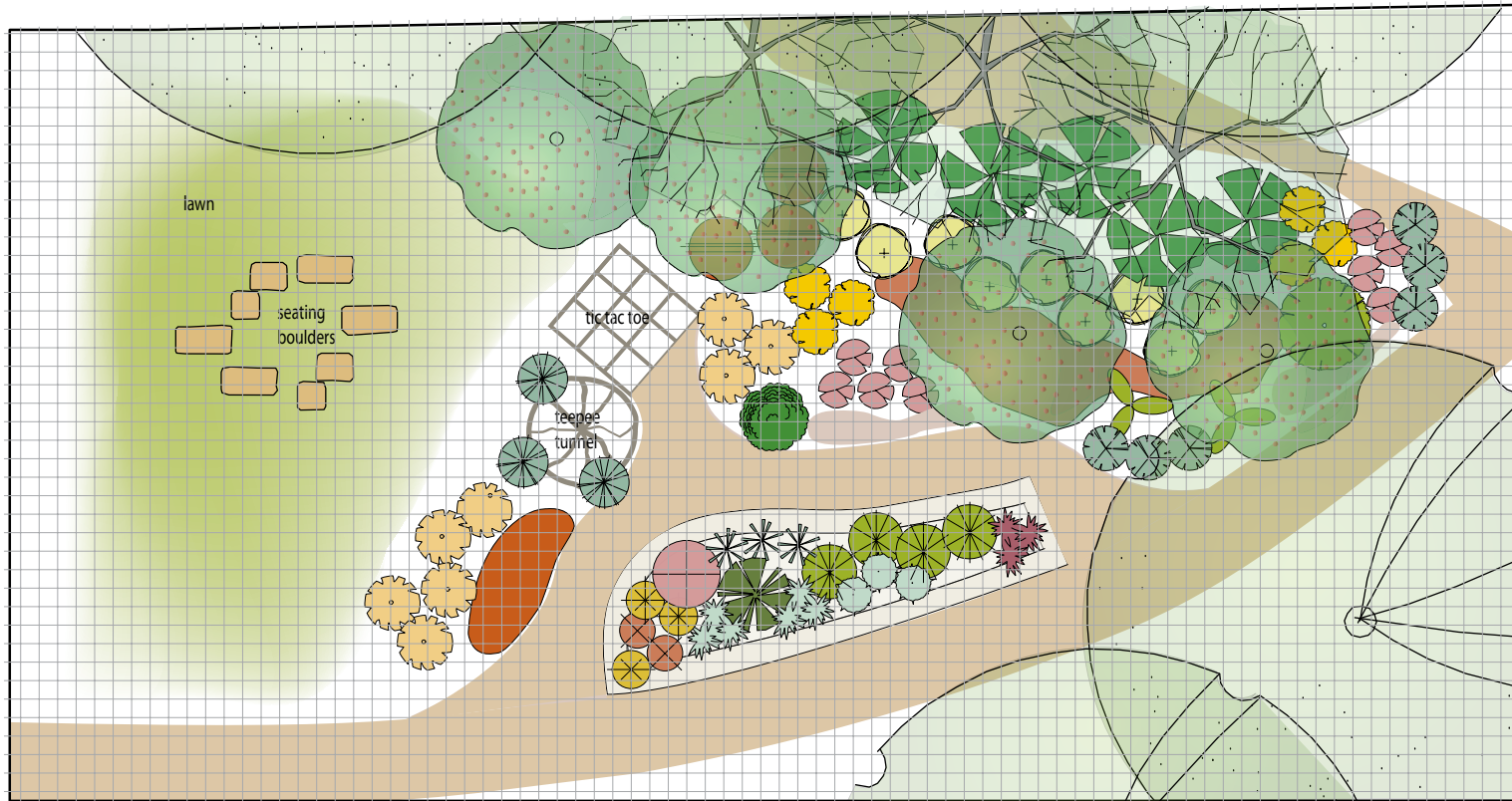
Firecracker Fern



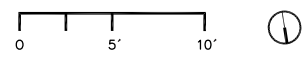
Mexican Plum



Shrimp Plant



- | | | | | | |
|-------------------------------|------------------------|-------------------|--------------------------|--|--------------------|
| shrubs | | perennials | | | |
| | sweet olive | | turk's cap | | lamb's ear |
| | upright rosemary | | chile pequin | | gregg's mistflower |
| cacti & succulents | | | silver ponyfoot | | inland sea oats |
| | queen victoria agave | | shrimp plant | | purple heart |
| | spineless prickly pear | | artemesia 'powis castle' | | mexican oregano |
| | | | oregano | | meadow sedge |
| | | | purple coneflower | | passionvine |
| | | | butterfly milkweed | | thyme |
| | | | | | gregg dahlia |
| | | | | | pigeonberry |
| | | | | | batface cuphea |
| | | | | | zoyzia grass |



plant key

Light:

Sun/part shade

Soil Needs:

- Amend existing soil with 2-3" of compost
- Be sure that your total soil base is 6-8" deep
- If additional soil is needed, use a good quality soil mix (approximately 25% compost, 65% loam and 10% sand)

Water Needs:

- Zoysia Grass: Water thoroughly every 2-3 weeks if no rainfall
- Plants: Water thoroughly every 3-4 weeks if no rainfall

Irrigation:

- Hand-watering is recommended
- If you must use an irrigation system... Choose one with bubblers and/or drip irrigation.
- If you reduce the amount of grass in your yard, reduce your watering times



www.growgreen.org

Earth-Wise Gardening Tips:

- Plant the right plant in the right place based on sunlight required
- Mulch all beds to retain water and reduce weeds
- Use St. Augustine grass only in shaded areas; Zoysia is preferred in a sunny location. Although Bermuda is a good drought-tolerant alternative, it tends to invade plant beds
- Reduce turf to meet your aesthetic or family needs because grass generally requires more water and chemicals to maintain
- Use pervious pavement that allows water to soak into the ground and/or the surrounding landscape such as pavers, mulch or pervious concrete
- Use rainbarrels to capture and reuse rainwater

For a driving or biking map to this and other demonstration gardens or for more earth-wise gardening tips, visit www.growgreen.org

For water conserving tips and rebates, visit www.waterwiseaustin.org

Get Creative

- Make a tunnel or fort out of branches and vines
- Add a large tic tac toe board or sandbox in the ground
- Incorporate your child's artwork into the garden: stepping stones, painted rocks, wind chimes and more
- Go outside and play!



512-974-2550

TEXAS A&M
AGRI LIFE
EXTENSION

512-854-9600

Austin 512-974-2199
WATER
Clearly Reliable