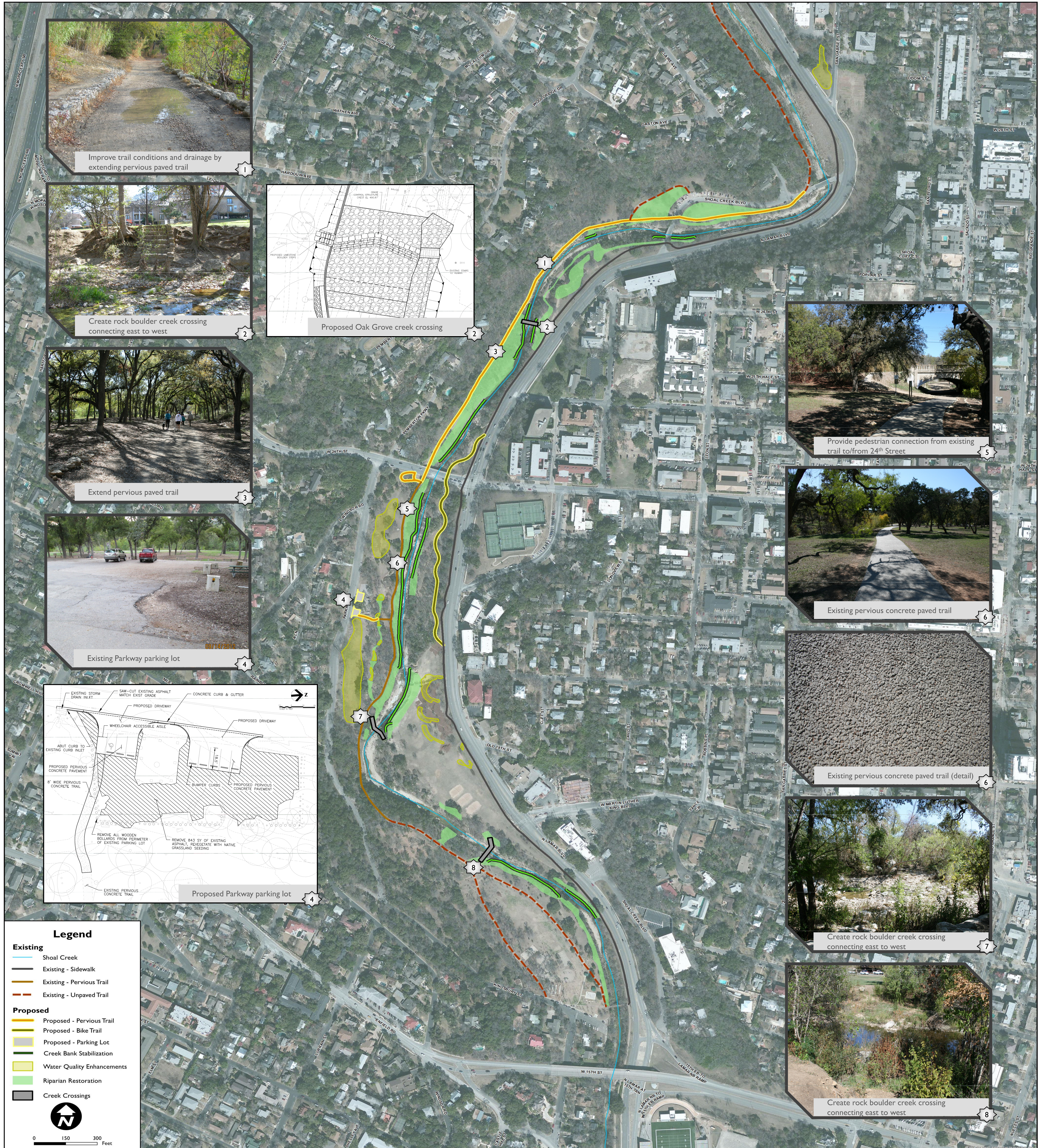


# Trails and Park Access Improvements

- Extend pervious concrete paved trail from 24<sup>th</sup> Street to Shoal Creek Boulevard and improve drainage
- Provide trail connection to 24<sup>th</sup> Street
- Provide three creek crossings to connect east to west
- Reduce footprint of parking lot off Parkway and improve drainage
- Proposed bike trail to separate bike and pedestrian traffic from Lamar sidewalk at 24<sup>th</sup> Street

# shoal creek restoration 15th to 28th streets



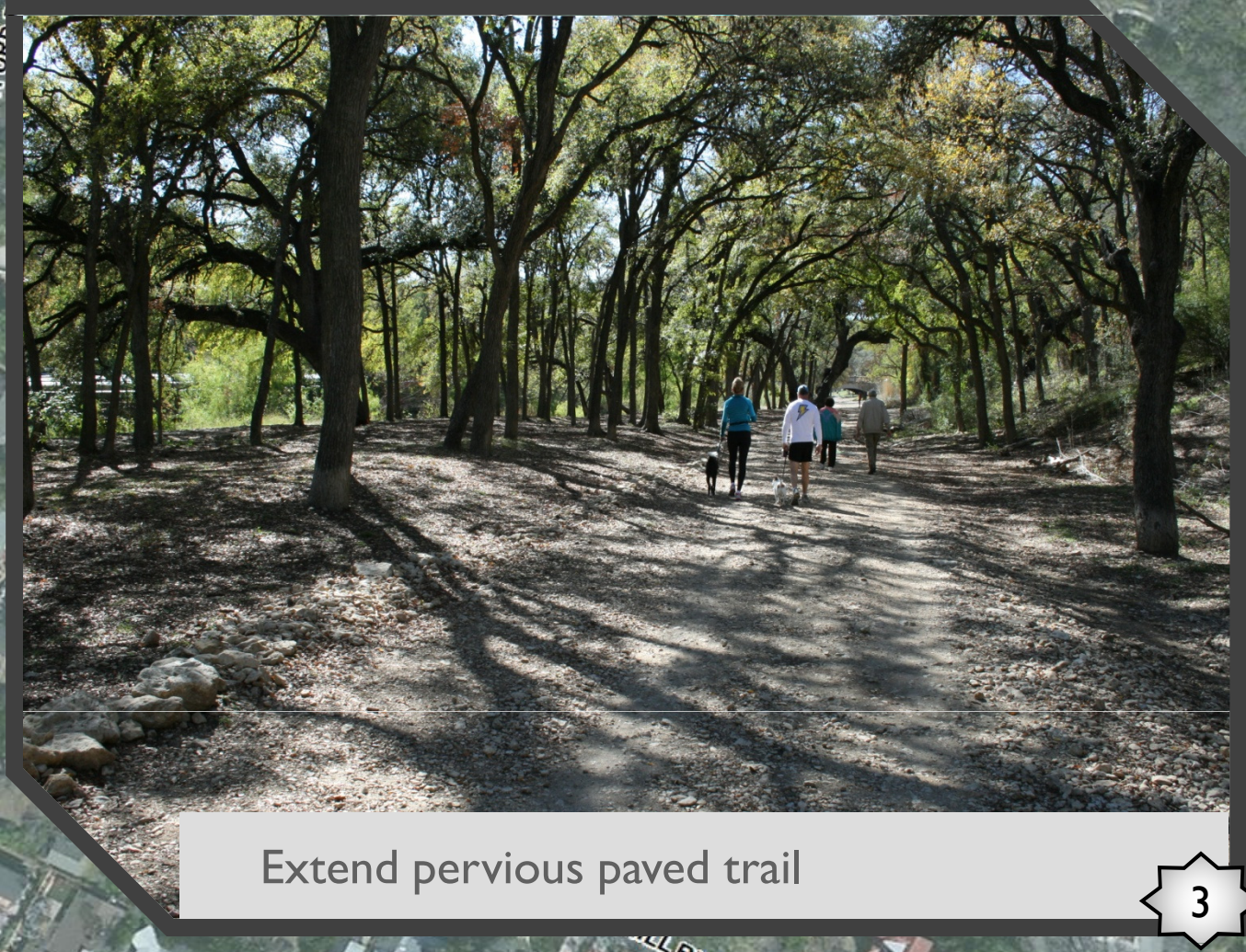
Improve trail conditions and drainage by extending pervious paved trail



Create rock boulder creek crossing connecting east to west



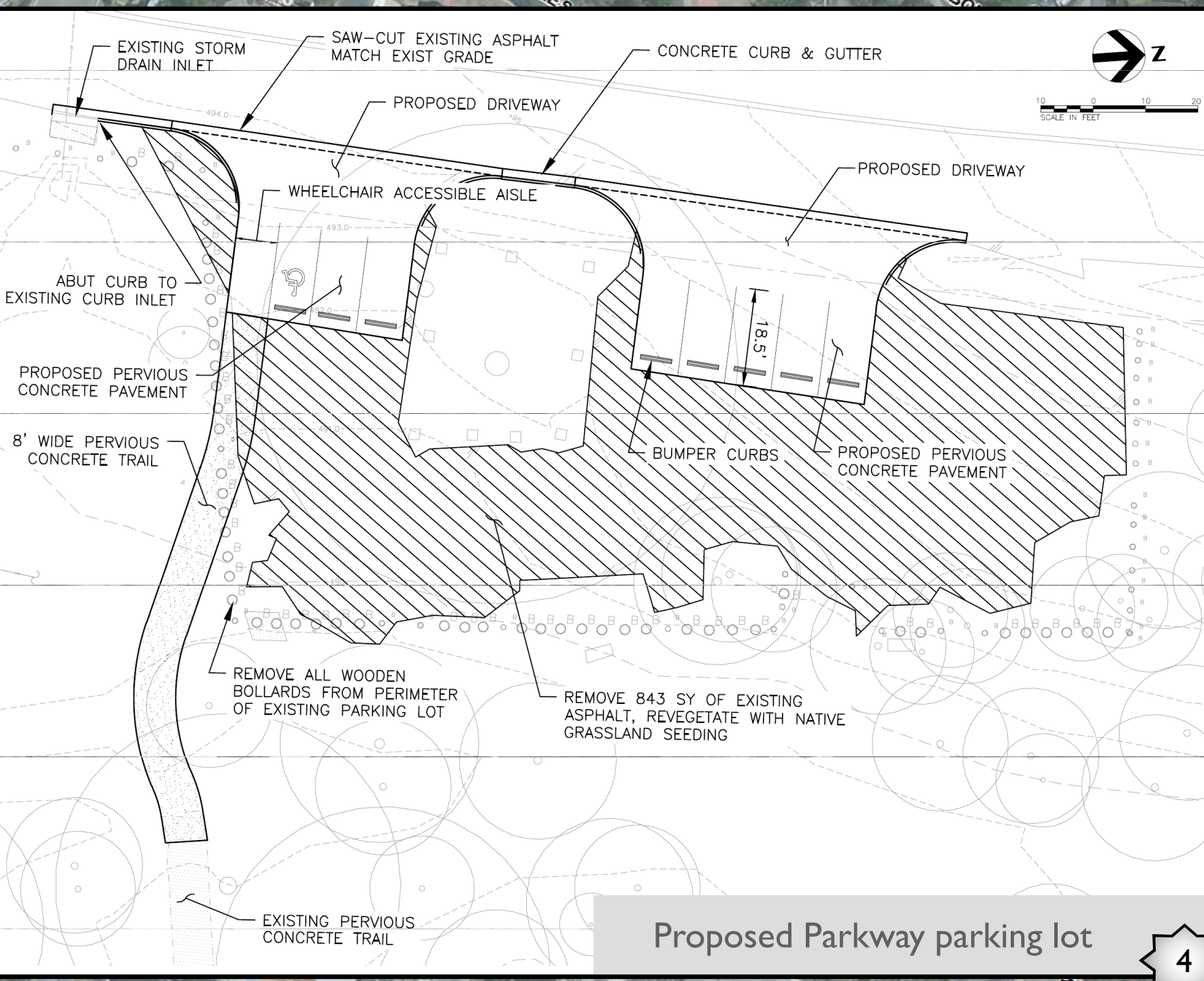
Proposed Oak Grove creek crossing



Extend pervious paved trail



Existing Parkway parking lot



Proposed Parkway parking lot



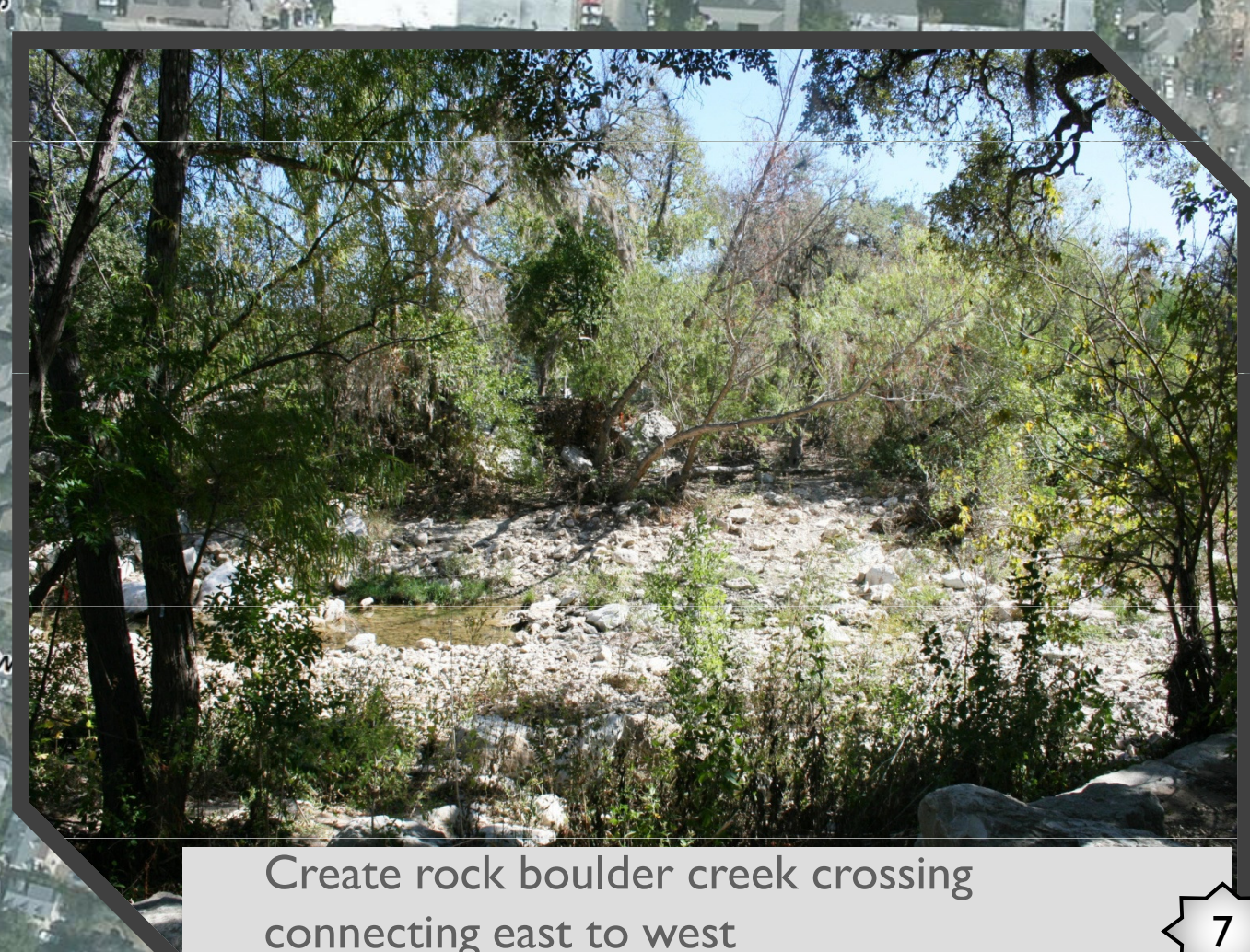
Provide pedestrian connection from existing trail to/from 24<sup>th</sup> Street



Existing pervious concrete paved trail



Existing pervious concrete paved trail (detail)



Create rock boulder creek crossing connecting east to west



Create rock boulder creek crossing connecting east to west

**Legend**

**Existing**

- Shoal Creek
- Existing - Sidewalk
- Existing - Pervious Trail
- Existing - Unpaved Trail

**Proposed**

- Proposed - Pervious Trail
- Proposed - Bike Trail
- Proposed - Parking Lot
- Creek Bank Stabilization
- Water Quality Enhancements
- Riparian Restoration
- Creek Crossings

0 150 300 Feet