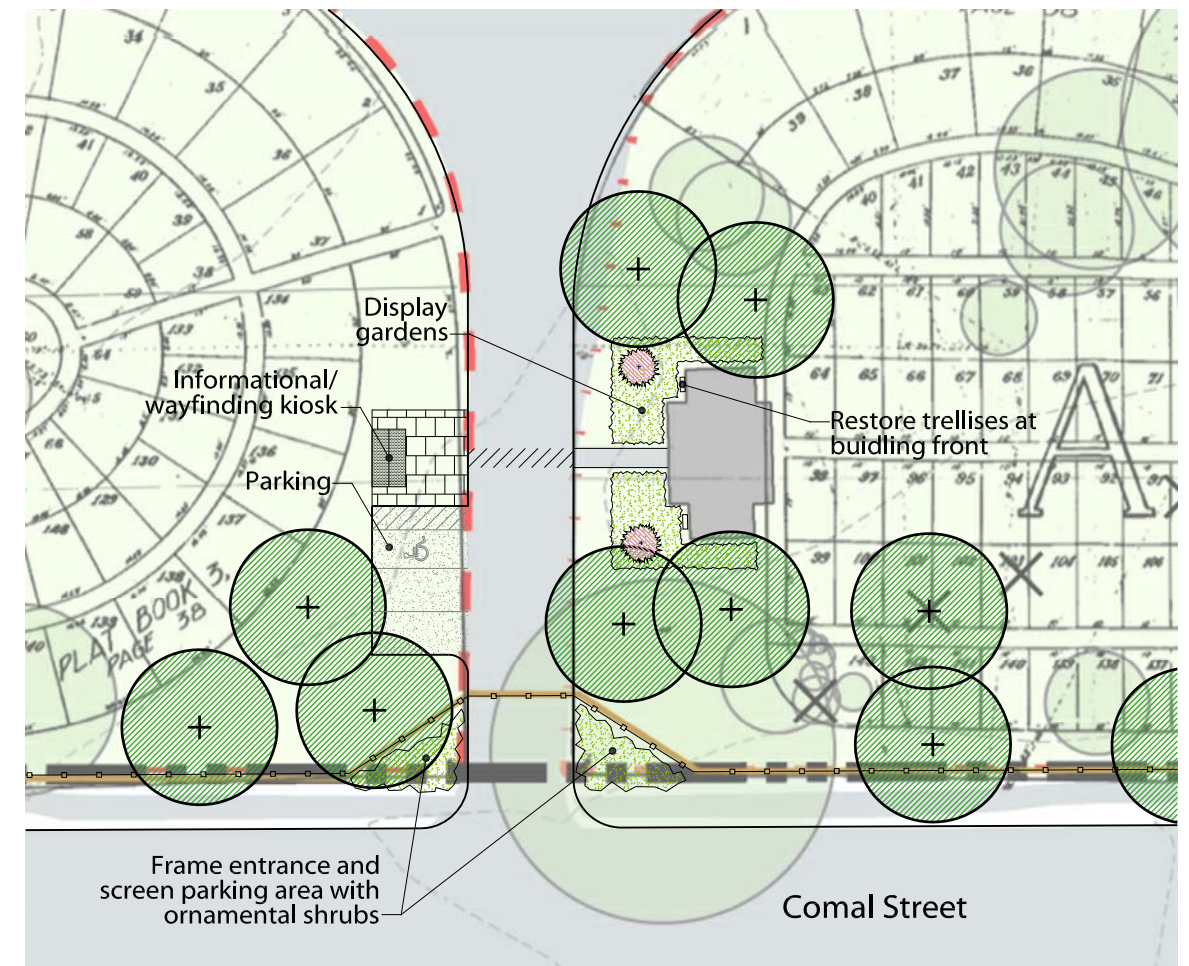


- Cemetery Boundary
- Contour (2-foot interval)
- Dead, Snag, or Stump
- Structure
- Cemetery Section
- Streams & Drainage
- Deciduous Trees
- Mausoleum
- Evergreen Trees
- Roads & Sidewalks
- Fence

Oakwood Cemetery Annex Site Plan





Oakwood Cemetery Annex, Entrance Detail

Scale: 1" = 40'-0"