



¡Adelante!

HOLLY SHORES/ EDWARD RENDON SR. PARK AT FESTIVAL BEACH MASTER PLAN

What's your vision for Holly Point?

Welcome | Bienvenido

The Trail Foundation and the City of Austin Parks and Recreation Department invite you to come learn about improving the water access at Holly Point, making it more ADA accessible, and evaluating how best to preserve, enhance and increase wildlife habitat.

We need your input!

What other improvements would you like to be considered?

- Seating and gathering areas
- Fishing and boating access
- Cultural history and arts

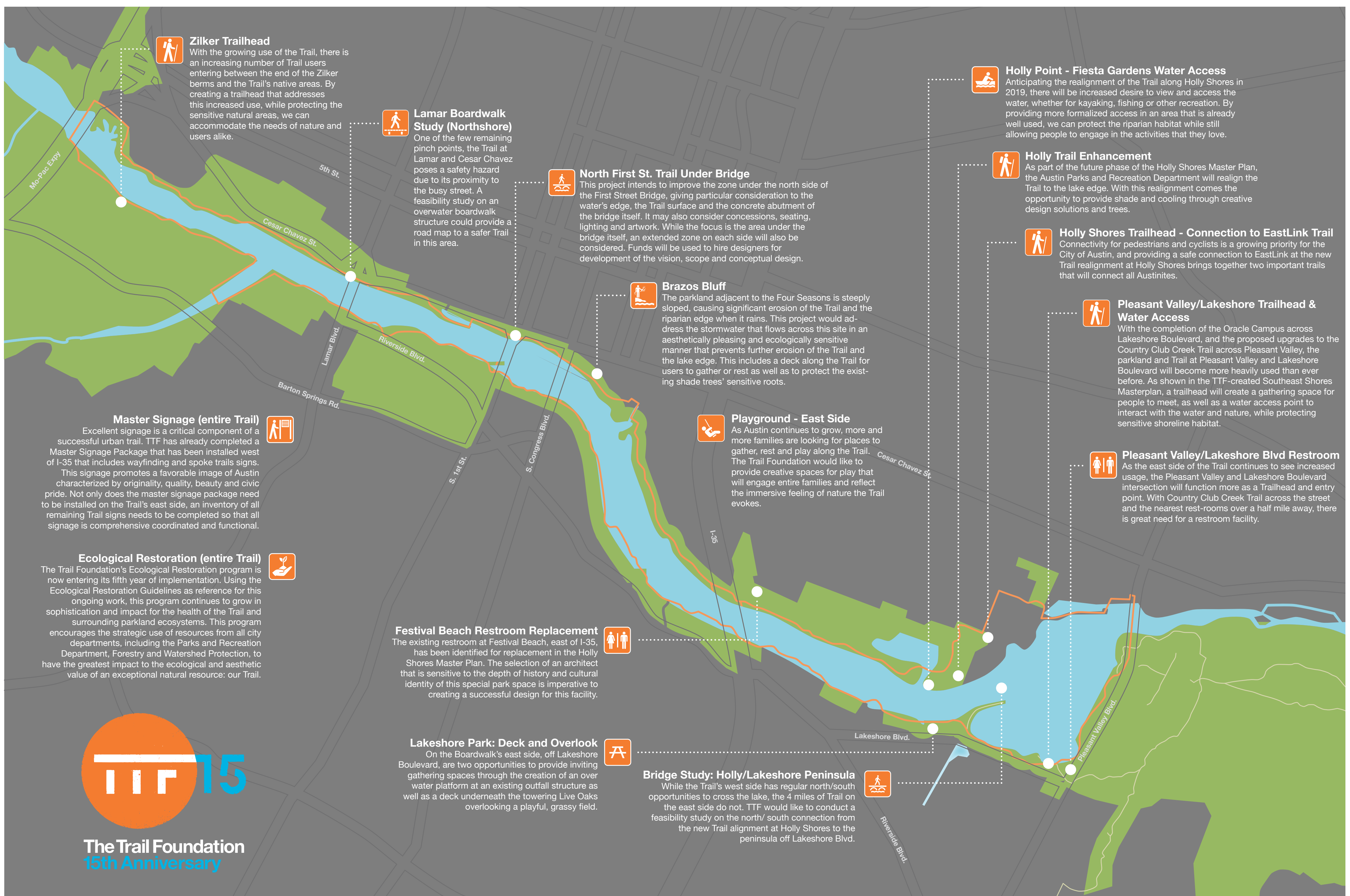
Can't make it in person?
Take our online survey at
www.hollypoint.org



**The Trail
Foundation**



The City of Austin is proud to comply with the Americans with Disabilities Act. If you require assistance for participation in our programs or use of our facilities, please call (512) 974-3914.



TTF 15th Anniversary

Recently, The Trail Foundation established criteria by which its projects are selected. These criteria centered around two focus areas:

1. *Community need and benefit, and*
2. *TTF's capacity and ability to complete the projects.*

With this criteria in mind, TTF selected 15 charter projects in honor of its 15th anniversary and created the Corgan Canopy Fund dedicated to financing the initial phases of each future project.

Slated for completion over the next five years, the 15 projects range from new trailheads and

bathrooms to new water access points and playgrounds. Nine projects are on the east side of the Trail, four on the west, and two along the entirety of the Trail. The map above identifies the 15 projects and provides detailed descriptions of each.

Holly Point Project

The Trail Foundation and the City of Austin Parks and Recreation Department have begun the process to develop a design and construction plan for Holly Point, located just west of the decommissioned Holly Power Plant at Festival Beach, adjacent to the lagoon and the baseball fields. This project anticipates the transition of the decommissioned Holly Power Plant into parkland and its

impact on the realignment of the Butler Hike-and-Bike Trail. The primary goal of the Holly Point project, as identified in the Holly Shores/Edward Rendon Sr. Park Master Plan, is to:

1) improve the water access at Holly Point, making it and the trail more accessible and compliant with the American Disabilities Act (ADA) guidelines, and

2) determine the best approach to preserve, enhance, and increase wildlife habitat.

Your input will help provide guidance on these goals and any other park improvements that could enhance your experience at Holly Point or time on the trail.

Preserve, Enhance Tree Canopy and Wildlife Habitat



Holly Shores/ Edward Rendon Sr. at Festival Beach

Master Plan

Riparian restoration, or restoration of the lake edge habitat, is an important element of the master plan proposal. Walking or canoeing at the water's edge in a peaceful park setting is a rare and valuable experience in this part of Texas, particularly in the city. The master plan seeks to find a balance between allowing people to experience this environment, and the protection and enhancement of the habitat.

In general, riparian vegetation is a major source of nutrients for aquatic communities and

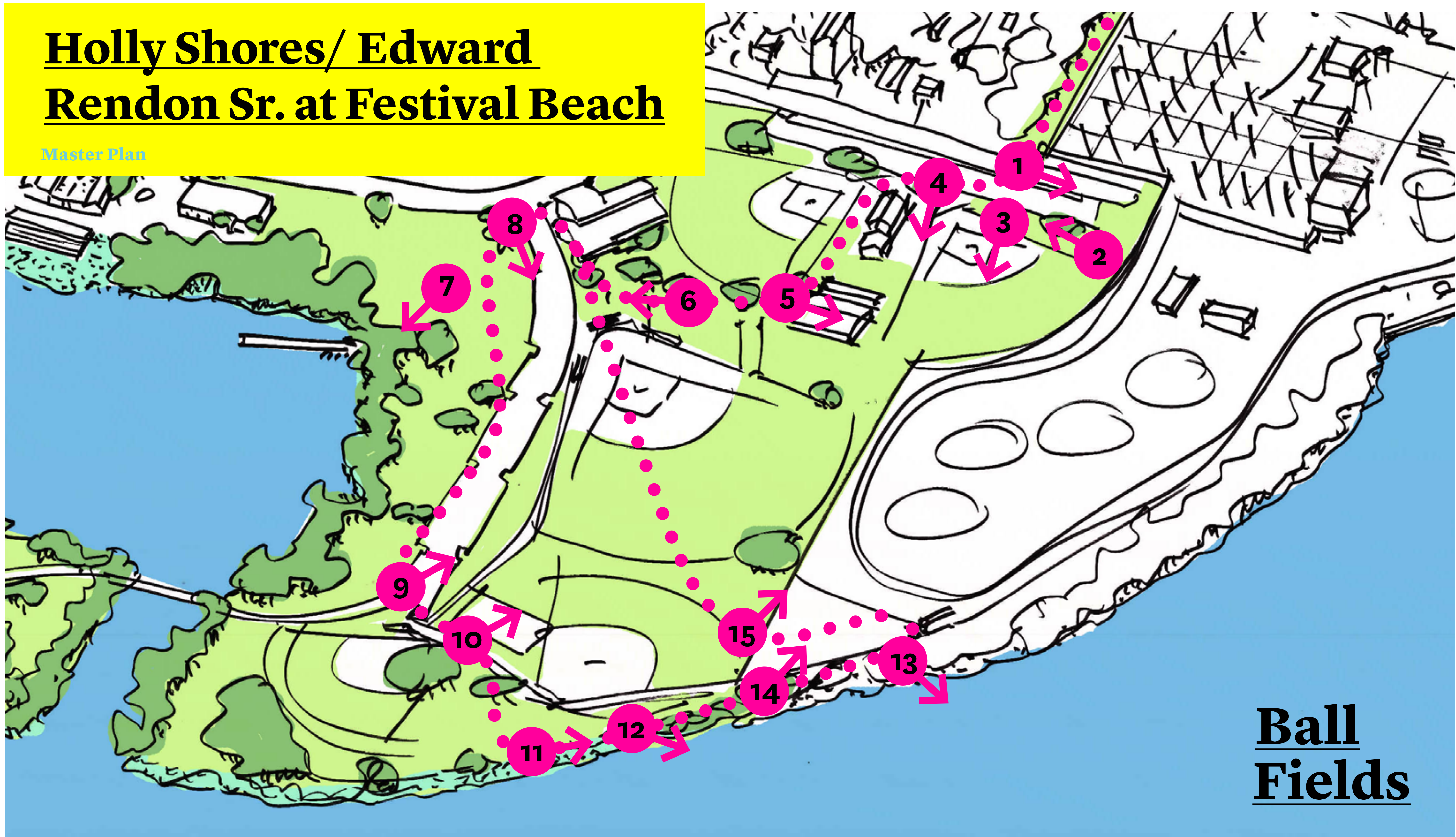
increase species diversity in those communities. The master plan, in reshaping the edge of the lake in places, providing new channels to improve water quality in the lagoon and cooling pond, and creating habitat islands in those areas, will increase the current riparian habitat from over 15,000 to over 20,000 linear feet.

A healthy plant community in this area will help control erosion, filter sediment and pollutants carried in stormwater, provide flood control and create habitat. Increased native species diversity can be encouraged

through the selective removal of invasive species and the seeding or planting of native woody or herbaceous species. The primary goals should be improving bank stability and species diversity, which can be done either actively or passively. Passive establishment can be achieved through the elimination of invasive species and selective vegetation thinning; active establishment in areas that have little existing habitat involves new planting once bank stabilization has been achieved.

Holly Shores/ Edward Rendon Sr. at Festival Beach

Master Plan



The ball fields west of the Holly Plant are a heavily used area of the park and an important part of the recreational program at Holly Shores. Many people walk or bicycle to the ball fields and there is a parking lot on Riverview Street, which is currently blocked by the Holly Plant, a condition that will change as part of the plant decommissioning (1).

The ball fields and surrounding landscape are under intense pressure by high levels of use. The support infrastructure including fences, lighting, shade structures, rest rooms, water fountains, buildings and pathways are in need of improvement or replacement(2-6).

The ball fields are in the Holly Shore park lands, but, with the exception of isolated areas (6), are not supported by a park landscape of shade trees, lawns and planting that would create a more comfortable area and a more integrated feeling with the rest of the park. As the parklands are created on the Holly Plant site, the opportunities to integrate this area with the rest of the park will improve (9,10).

The Lorraine “Grandma” Camacho Activity Center is a key facility in this part of the park, providing year round activities, events and classes for children and adults (8). The Camacho Center will be an important center of activity as the park improvements are made.

This part of the park has rich habitat at the lake edge, although the current Holly Plant prevents the trails from connecting to areas to the east, and the trails turn inland. The lack of connectivity here creates a feeling of isolation, plantings have been allowed to become overgrown, and parts of the landscape can feel unsafe. There are occasionally expansive views over the lake, illustrating the great potential of this area to be a tranquil, yet welcoming part of the park in the future. The opportunities here are particularly exciting (11-15).

Holly Shores/ Edward Rendon Sr. at Festival Beach

Master Plan



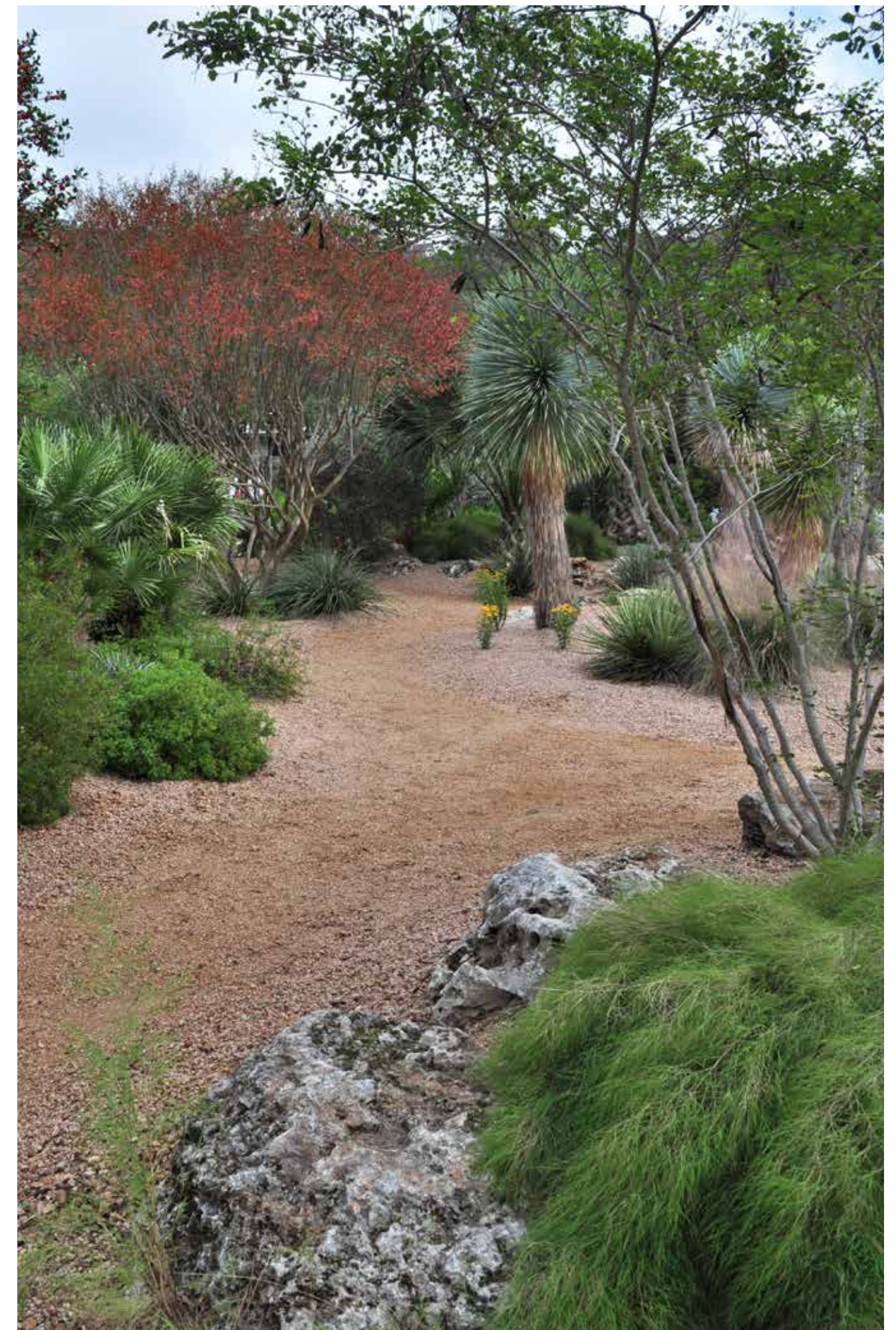
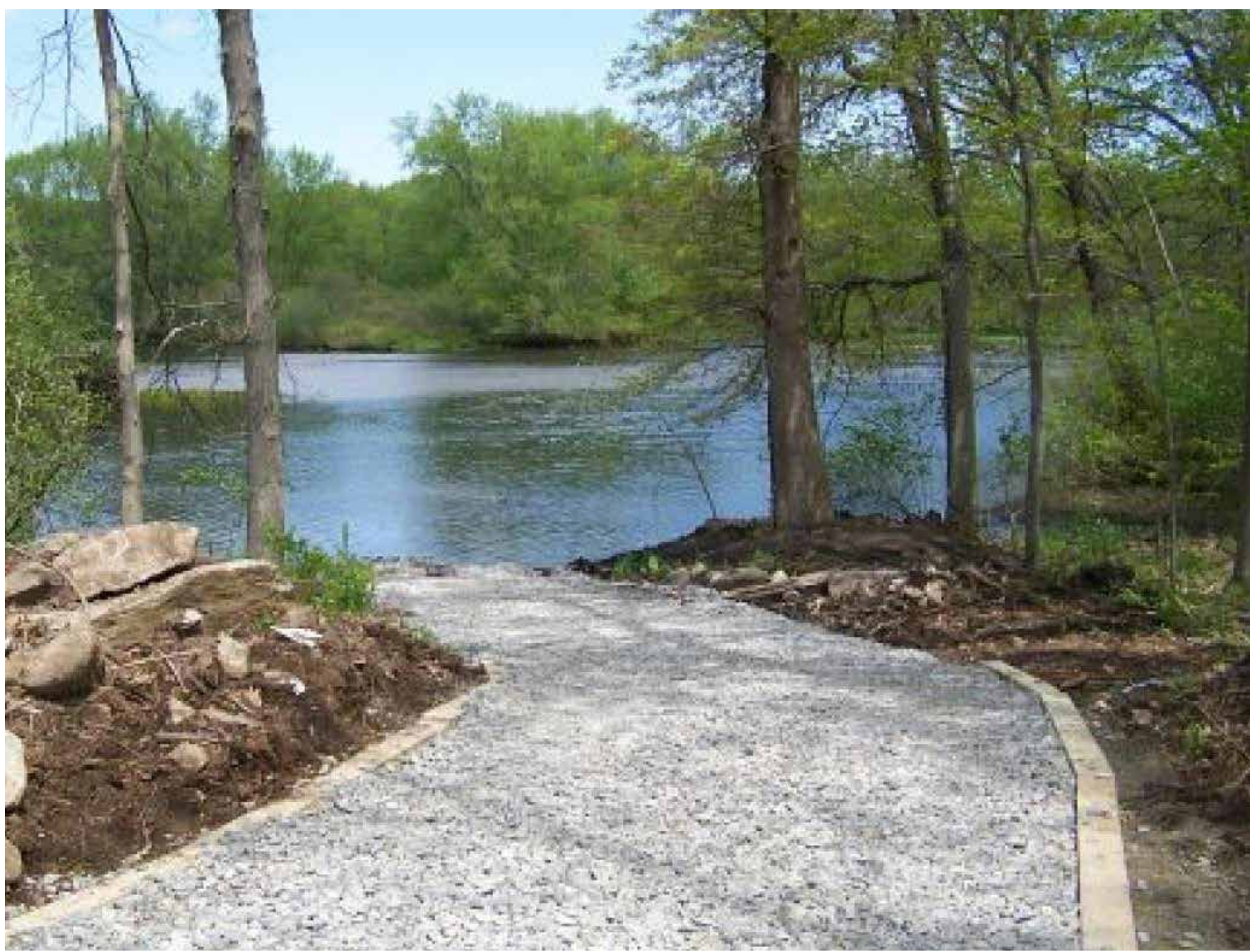
Figure 49.
Festival Beach Lagoon
Existing Conditions Plan



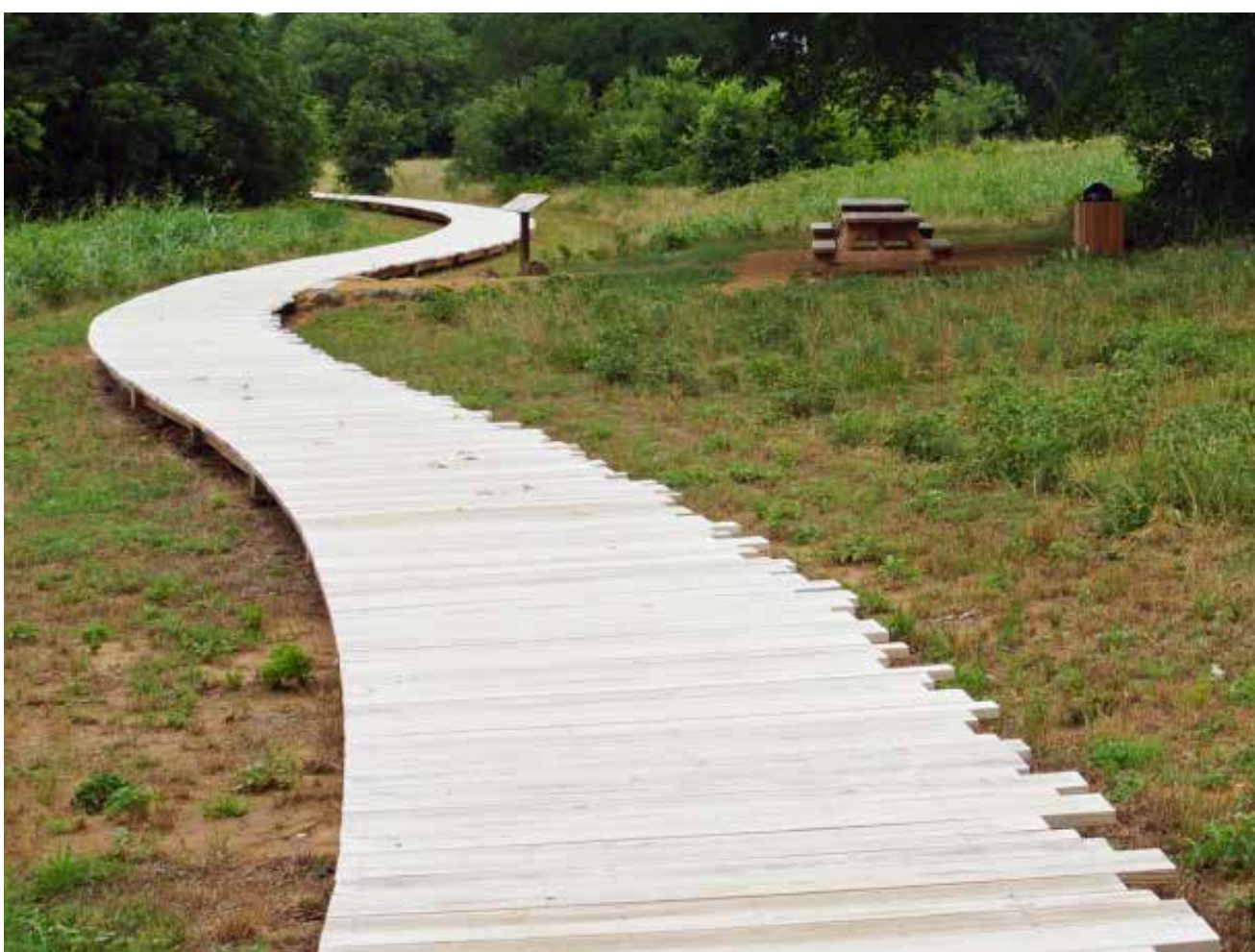
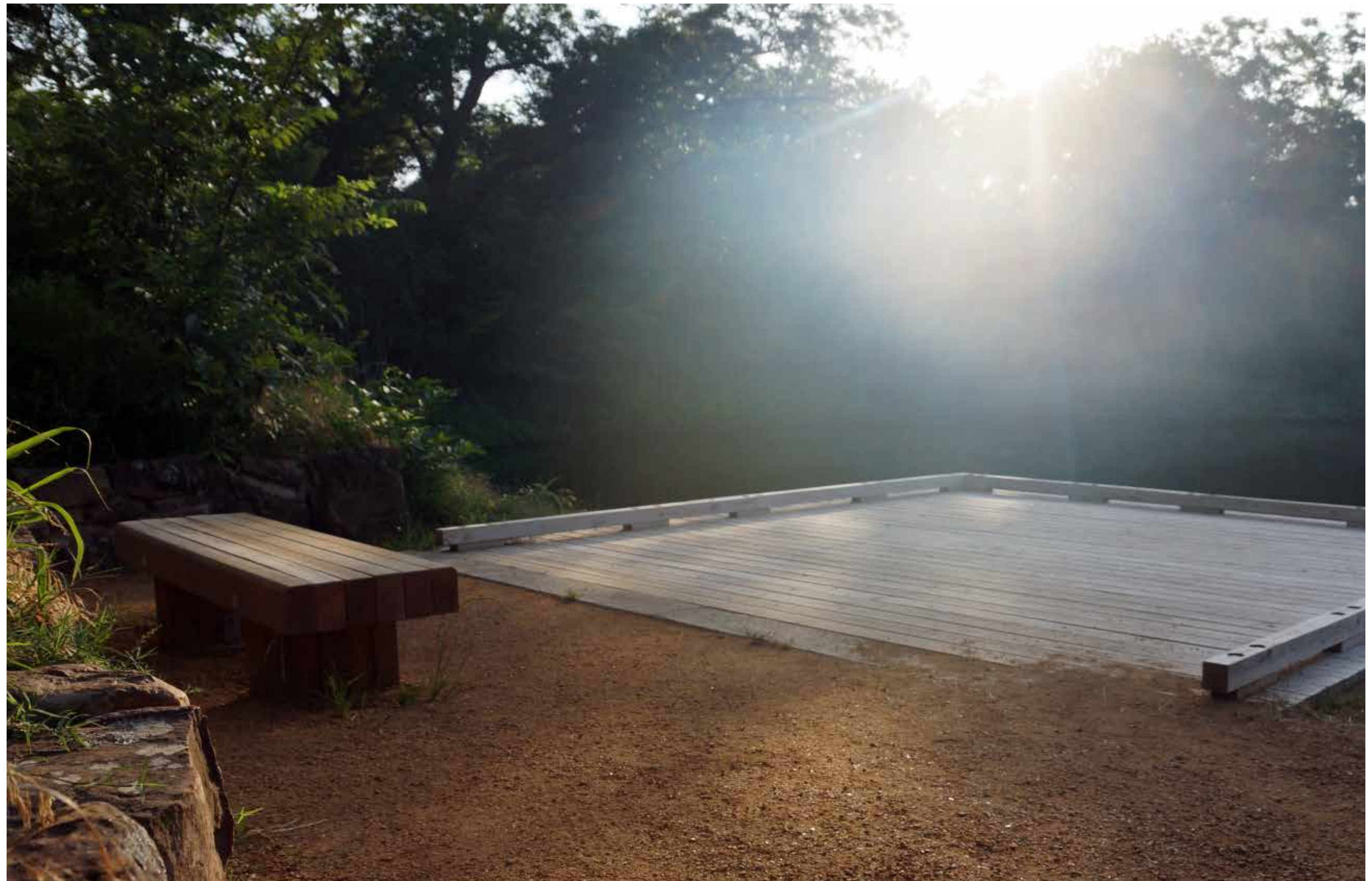
The Trail Foundation



Examples / Ejemplos



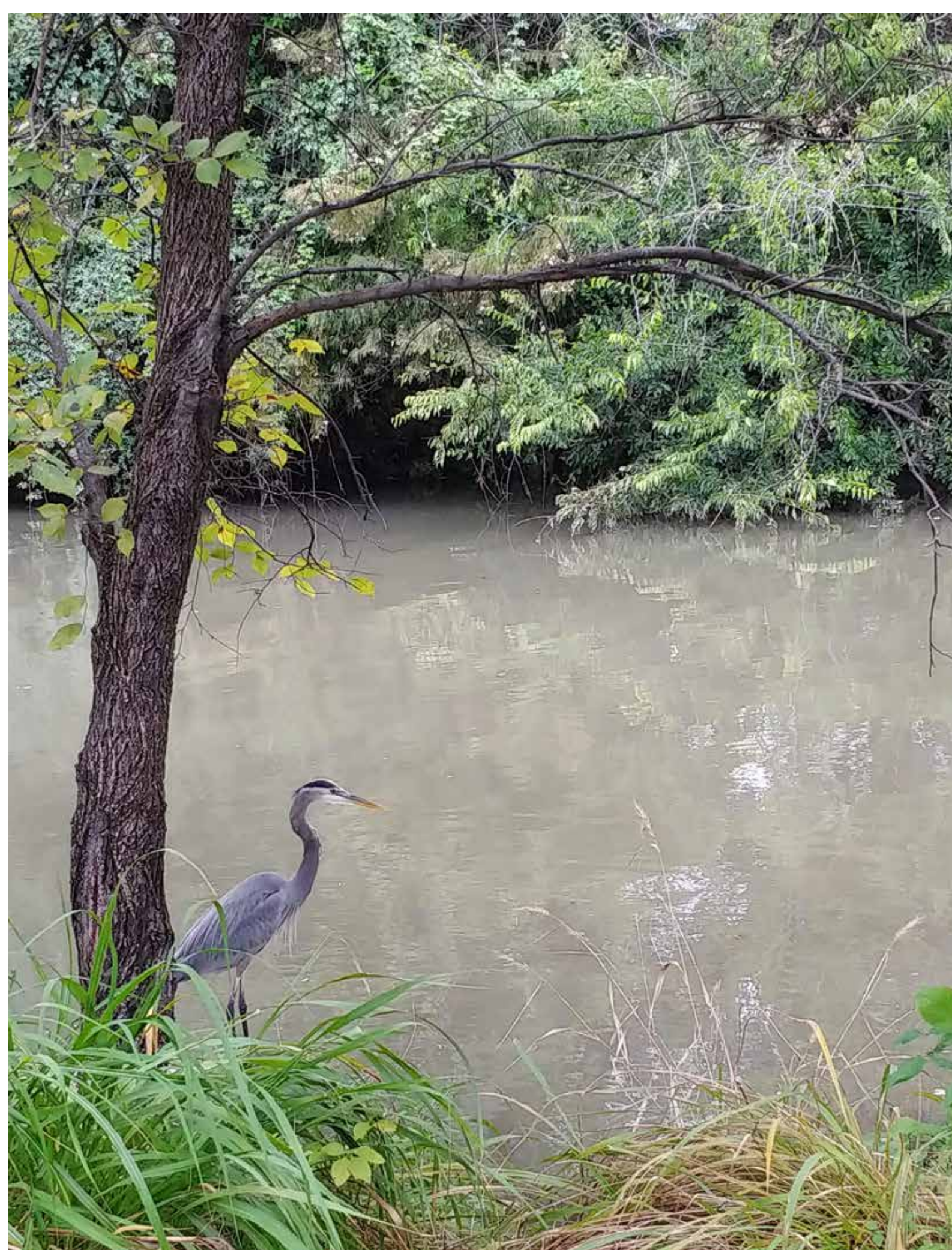
Examples / Ejemplos



Examples / Ejemplos



Texas Native Plants / Plantas Nativas de Texas



Longhorn Dam with natural shoreline vegetation

Key Elements About Shoreline Vegetation

- Shoreline plants and trees provide physical stabilization of the river bank
- Plants and soil work together to filter pollutants from water runoff
- Vegetation provides habitat for fish, birds, and many other animals

Project Timeline

FEBRUARY-APRIL 2019

- Project Scoping
- One-on-one meetings with community members

MAY 2019

- Project Introduction Event at Camacho Activity Center - May 18
- Project Survey Launched

JUNE-JULY 2019

- Community Open House - June 8
- Small Group Discussions
- Butler Hike-and-Bike Trail Tabling
- Survey Close (July 5)

AUGUST-SEPTEMBER 2019

- Review of Public Input
- Draft Schematic Design
- Small Group Discussions

OCTOBER 2019

- Schematic Design Revisions
- Community Open House to Present Recommendations

NOVEMBER - JANUARY 2020

- Preparation of Final Construction Documents

MARCH-JULY 2020 (TENTATIVE)

- Construction Phase

Phase 1

Understanding Conditions & Needs

Phase 2

Development of Schematic Design and Review

Phase 3

Final Construction Documents

