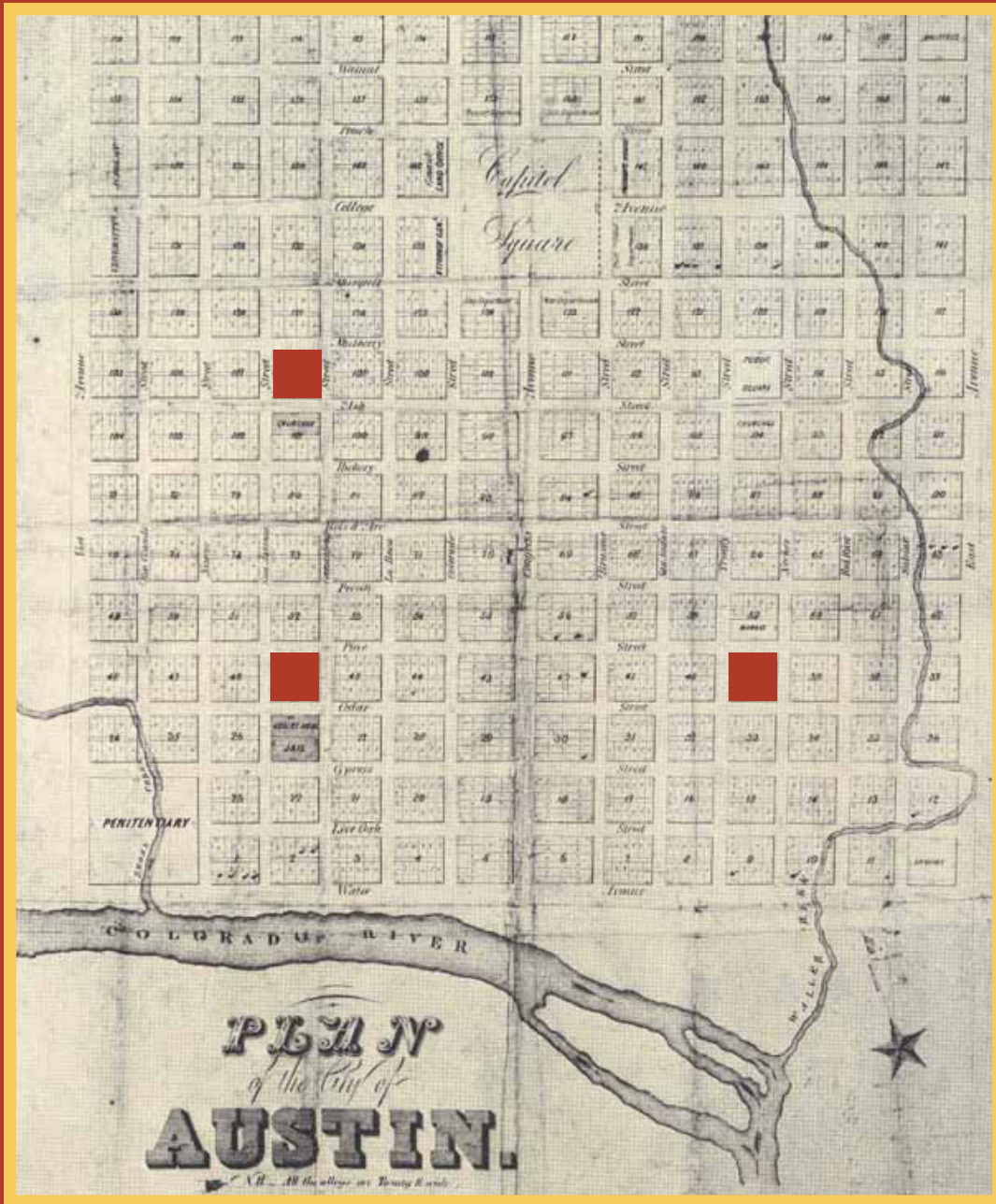


Brush Square History

Squares designated, 1839



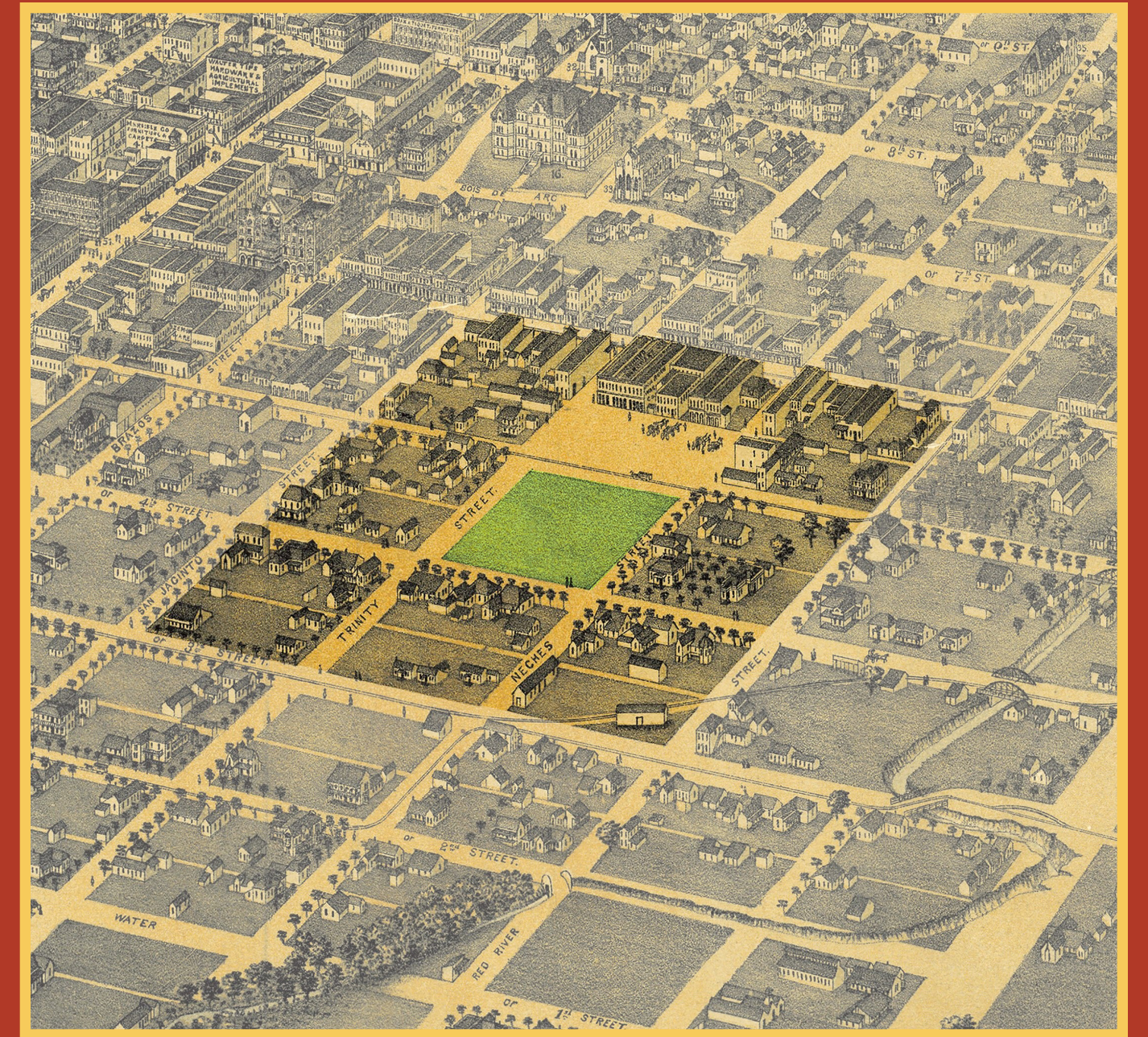
Source: Austin History Center

Passenger trains arrive in Austin, 1871



Source: Austin History Center

Bird's eye view, 1887



Source: Austin History Center

O. Henry House moved to site, 1934



Source: Austin History Center

Susanna Dickinson Hannig House moved to Brush Square, 2003. Restored 2006-2008. (Shown in original site)



Source: Austin Parks Foundation

Central Fire Station #1, 1938



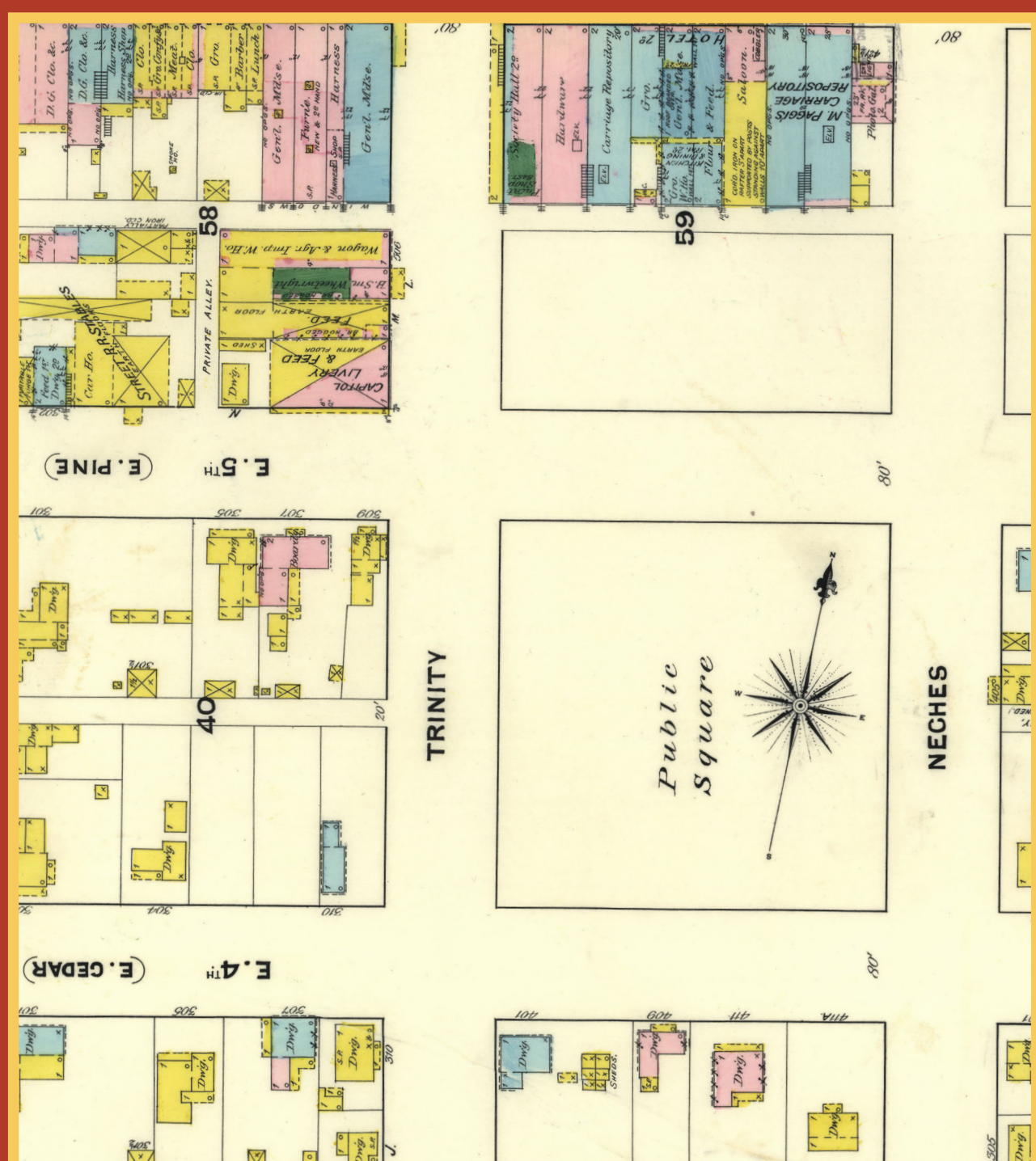
Source: Austin History Center

Bird's eye view, date unknown



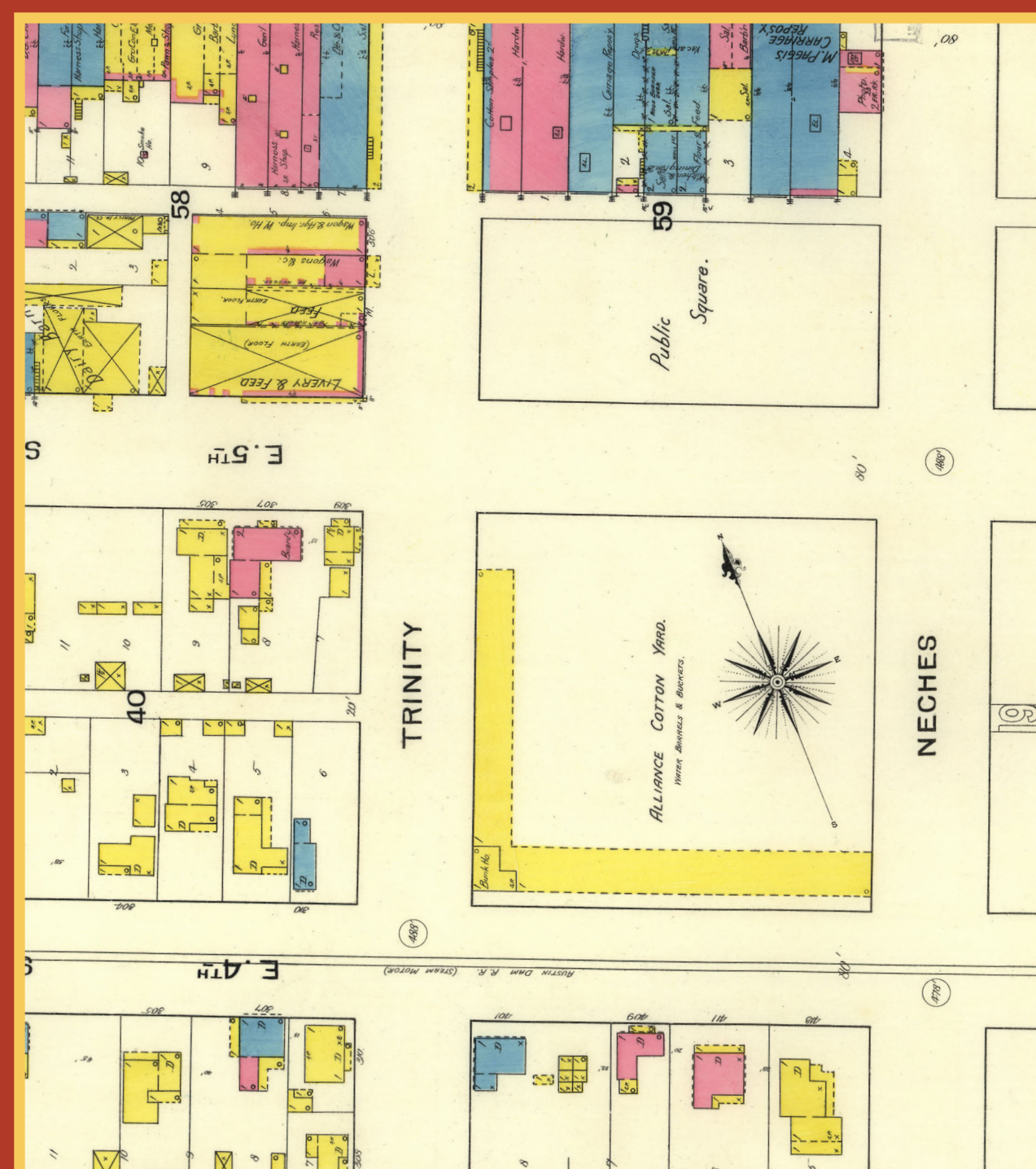
Source: Austin History Center

Sanborn Fire Insurance Map, 1885



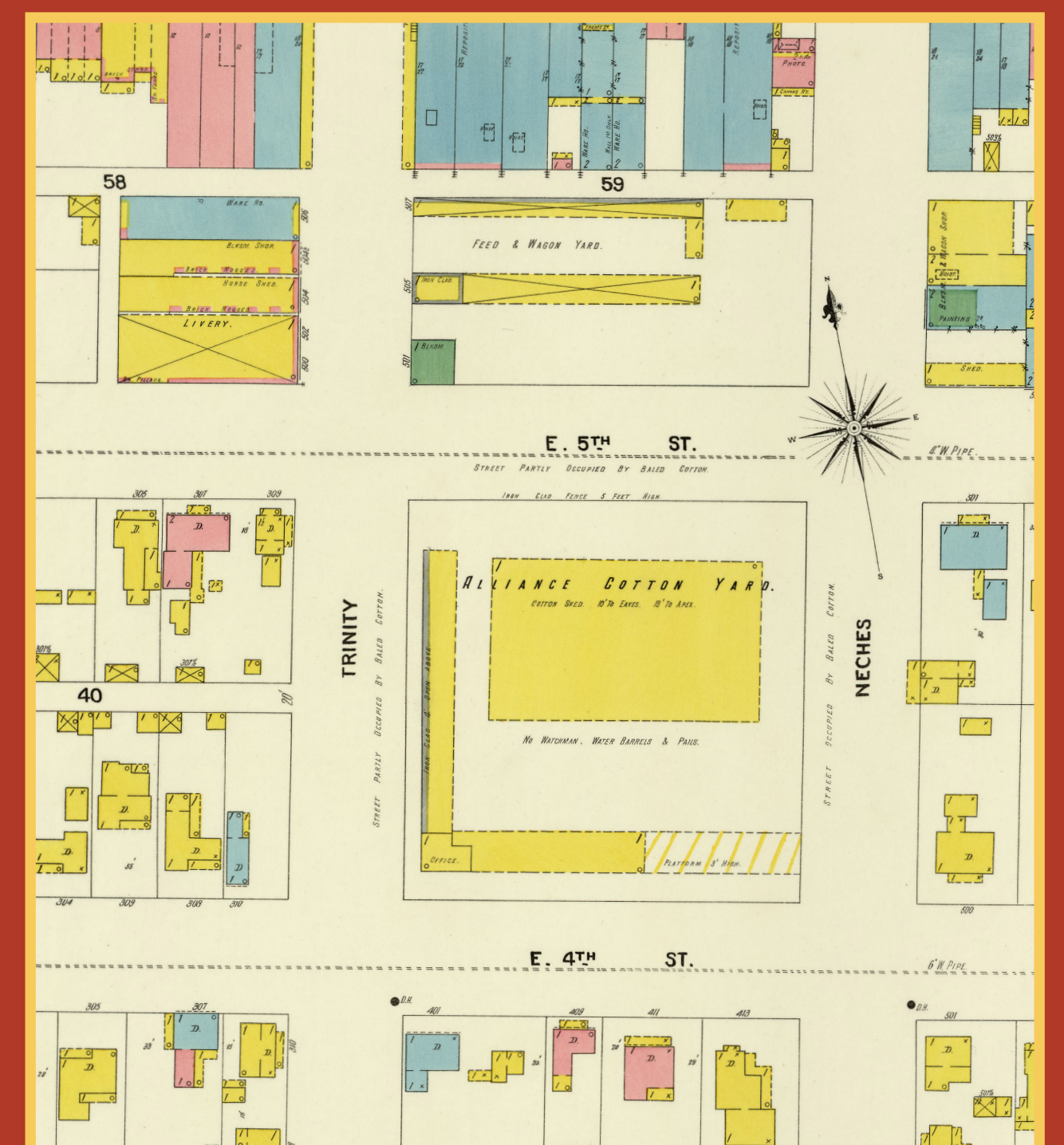
Source: Library of Congress

Sanborn Fire Insurance Map, 1889



Source: Library of Congress

Sanborn Fire Insurance Map, 1894



Source: Dolph Briscoe Center for American History