

WELCOME

Beverly S. Sheffield Northwest District Park Vision Plan
Community Meeting #2 – Proposed Site Concepts
June 15, 2021



Pause to set up Poll Everywhere

PollEv.com/austinparks512, or

Text AUSTINPARKS512 to 22333

When Questions are activated, respond at **PollEv.com/austinparks512**, or
Text **AUSTINPARKS512** to **22333** once to join

Poll Everywhere





This session is being recorded and will be posted on the project website.



We ask all participants to please keep your mics muted during the presentation.



We want to hear from you! Go to pollev.com/AustinParks512 to answer our questions during the presentation.



Should you have questions/comments, please use the chat feature to share.



The meeting facilitator will provide an opportunity for you to share your questions & comments.

Zoom Housekeeping



- Project Team
- Park Vision Plan
- Survey #2 -What We Heard
- Proposed Site Concepts
- Poll Everywhere
- Next Steps
- Comments & Questions
- How to Stay Involved



Meeting Agenda



In Today's Meeting:

Darcy Nuffer

Landscape Architect / Project Contact
City of Austin Parks and Recreation Department

Drew Carman

Director of Park Planning and Design/ Project Manager
RVI Planning and Landscape Architecture

Nhasala Manandhar

Designer
RVI Planning and Landscape Architecture

Other Team Members:

Rifeline - Public Involvement Consultant

Hicks & Company - Environmental Consultants

Jose I. Guerra, Inc. - Civil Engineering Consultants

Cotera + Reed Architects - Architectural Consultants

Altura Solutions - Accessibility Consultant

Vision Plan Team



The Austin Parks and Recreation Department is working with the community to create a new vision for Beverly S. Sheffield Northwest District Park

The purpose of the Vision Plan for this 31 Acre park is to:

- Engage the community in creating a vision of the park's future.
- Create a plan to guide phased implementation of the vision.



Project Introduction



- Limitations on certain types of improvements within floodplain
- Access points and circulation
- Limited sense of arrival
- Fragmented park areas
- Accessibility
- Pond water quality
- Trail network connectivity



Site Constraints





Online Survey #2 Results



Enhance and preserve park natural amenities

- Preserve and enhance shade within the park
- Improve and maintain the duck pond
- Add more native habitat areas

Enhance and increase recreational amenities (active and passive)

- Support walkers and bikers with adequate trail networks
- Add seating for passive recreational opportunities
- Incorporate more open-ended active uses of the park
- Support existing active recreation uses (baseball, tennis, pickleball, pool)

Increase park connectivity and park identity

- Better connect the park to the neighborhood and nearby recreational amenities
- Enhance signage and wayfinding
- Create opportunities to learn about the park and its history

Balance park amenities with other City infrastructure needs

- Coordinate dam rehabilitation requirements with community needs
- Provide space within the vision plan for pool modernization
- Plan for sewer line replacement project

Proposed Planning Values-Including input from Small Group Meetings and Survey #1



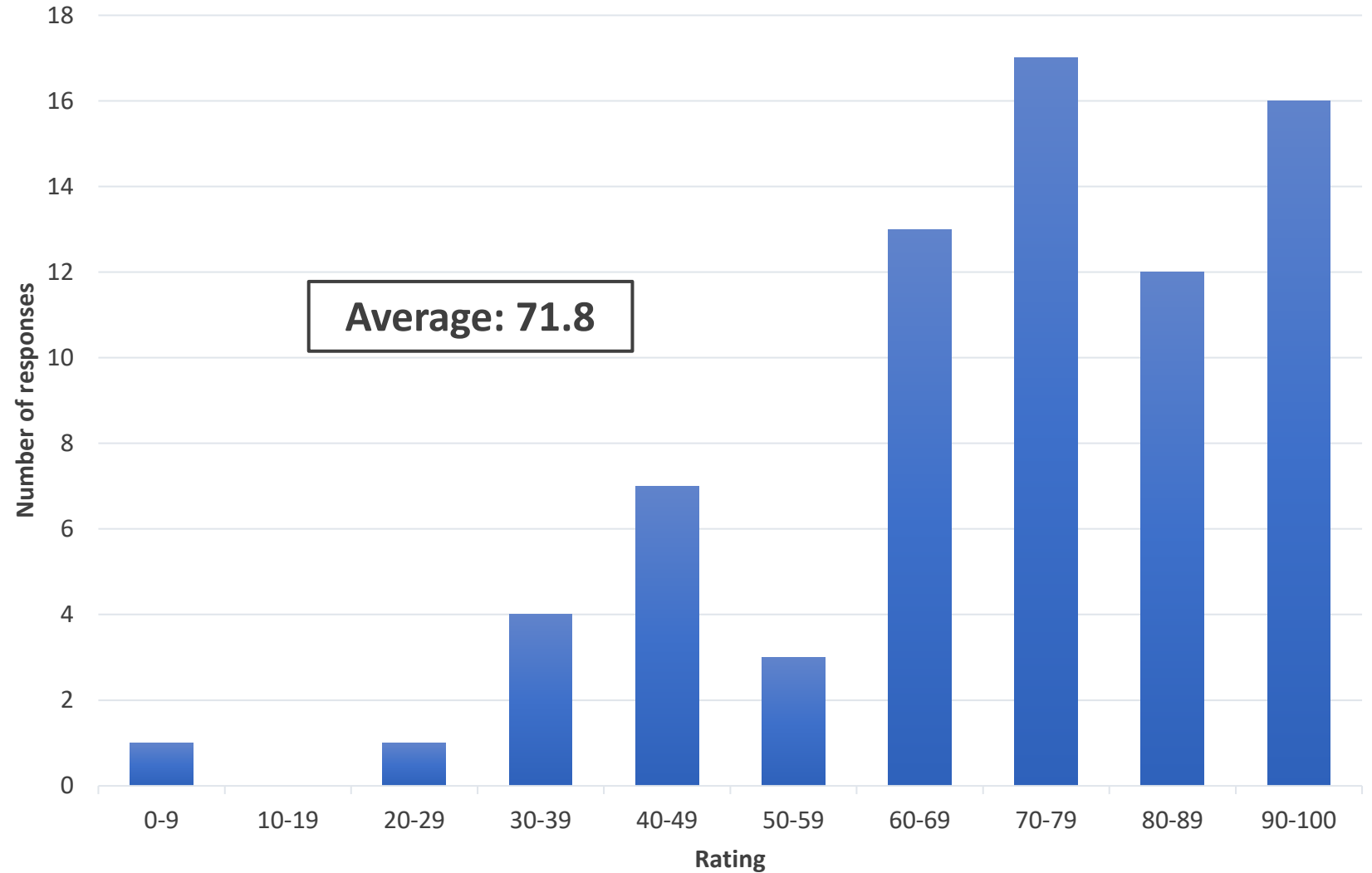
What word summarizes the importance of Sheffield Northwest Park?



Online Survey #2 Results – One Word Summarizing Importance of the Park



Please rate how well you agree with the following statement:
The values shared capture my vision for the planning process.



Online Survey #2 Results – Values Capturing Community’s Vision for the Planning Process



Remove impervious cover. Add trees and wildflowers.

Update the playground.

Improve lighting and restroom facilities.

Provide dedicated spaces for gatherings, pedestrians, cyclists and dogs.

Develop unutilized areas within the park.

Include a new footbridge to the park and update the existing one.

Online Survey #2 Results – What is currently missing from the proposed planning values?



Enhance and preserve park natural amenities

- Preserve and enhance shade within the park
- Improve and maintain the duck pond
- Add more native habitat areas (**trees and grasses/wildflowers**)
- **Remove impervious cover**

A

Enhance and increase recreational amenities (active and passive)

- Support walkers and bikers with adequate trail networks
- Add seating for passive recreational opportunities
- Incorporate more environmental/nature active uses of the park
- Support existing active recreation uses (baseball, tennis, pickleball, pool)
- **Provide dedicated spaces for gatherings, pedestrians, cyclists and dogs**
- **Develop unutilized areas of park**
- **Improve lighting**
- **Improve playground and restroom facilities**

B

Increase park connectivity and park identity

- Better connect the park to the neighborhood and nearby recreational amenities
- Enhance signage and wayfinding
- Create opportunities to learn about the park and its history
- **Update existing footbridge to park**
- **Build a new footbridge to park**

C

Balance park amenities with other City infrastructure needs

- Coordinate dam rehabilitation requirements with community needs
- Provide space within the vision plan for pool modernization
- Plan for sewer line replacement project

D

Final Planning Values to Guide the Vision Plan – Including input from Community Meeting #1 (May 4, 2021) and Survey #2.



Needs Assessment Matrix

Amenity (Alphabetical Order)	Planning Value
Baseball Facility/Bldg Improvements	B,C
Entry Sequence, Signage or Features	C
Improved/Expanded Trails	B,C
Kids 'Bike Playground' (Pump Track)	B
MSE Wall Removal	A,B,C,D
Native Habitat - Riparian & Ephemeral Channels	A,B,C,D
Native Habitat - Native Grass & Wildflower	A,B,C
Native Habitat - Woodlands	A,B,C
Native Tree Plantings - Design Based	A, B
Open Lawn	B,C
Park Signage (Directional)	C
Park Signage (Interpretive)	B,C
Parking Removal and Circulation Modifications	B,D
Pedestrian Bridge Connection to Shoal Creek Blvd	C
Pedestrian Bridge Improvements (deck)	B,C
Picnic Opportunities	B
Playscape (Ages 2-5)	B,C
Playscape (Ages 5-12)	B,C
Playscape Swingset	B
Pond Improvements	A, B, C, D
Public Art	B,C
Restroom (Servicing Greater Park Area)	B,D
Restroom (Servicing Playscape)	B,D
Shade Structures	B

Needs Assessment Matrix





LEGEND

1. ENTRY MONUMENT; VEHICULAR OR PEDESTRIAN
2. OVERLOOK
3. PLAYFIELD/ EVENT LAWN
4. RETAINING WALL WITH BERM
5. POND
6. DOGTROT RESTROOM OR PAVILION
7. PLAYSCAPE AREA
8. BASKETBALL COURT, RELOCATED
9. BOARDWALK
10. ENHANCED PEDESTRIAN ARRIVAL
11. DECOMPOSED GRANITE TRAIL
12. GRAND STAIRS
13. COMMUNITY ORCHARD
14. SHADE CANOPY
15. ACCESSIBLE ROUTE
16. PEDESTRIAN BRIDGE
17. BIKE PLAYGROUND
18. OPEN PLAY
19. BLOCK WALL SECTION
20. RAIN GARDEN

Concept A





Concept A



How Planning Values and Needs Assessments are Met

- Pond
- Natural elements
- Trails
- Active recreation
- Parking
- Playground
- Passive recreation
- Activities/concessions
- Infrastructure investments
- Park connections, signage and wayfinding
- Major expenditures



CONCEPT A

Concept A



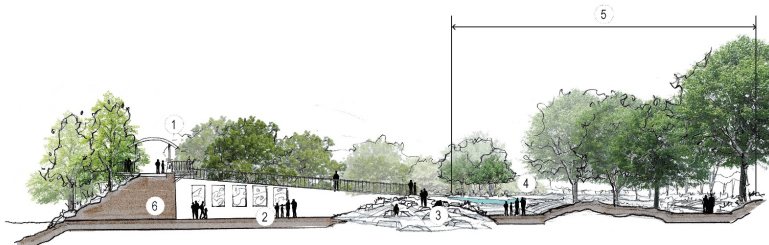


LEGEND

1. ENTRY MONUMENT, VEHICULAR OR PEDESTRIAN
2. CONCESSION PLAZA/ OVERLOOK
3. EVENT LAWN
4. POND PAVILION
5. POND
6. GREAT LAWN
7. PLAYSCAPE AND PICNIC AREA
8. NEW SHADE STRUCTURES
9. FOOD TRUCK COURT
10. ENHANCED PEDESTRIAN ARRIVAL
11. ROCKY PICNIC 'NATURE PLAY' AREA
12. GRAND OVERLOOK /STAGE AND AMPHETHEATRE
13. ARRIVAL OVERLOOK, STAIRS AND ACCESS
14. CREEK ACCESS
15. SHOAL CREEK TRAIL
16. WILDFLOWER GARDEN
17. MAIN LOOP TRAIL-PAVED (TYP)
18. DECOMPOSED GRANITE CONNECTOR TRAIL (TYP)
19. SMALL PLAY AREA

Concept B





LEGEND

- 1. OVERLOOK PLAZA
Creek and Park overlooks with interpretive signage
- 2. SHADE CANOPY AND TRAIL PORTAL
- 3. REMNANT QUARRY
- 4. POND IN DISTANCE
- 5. REMOVE +100LF OF WALL
open view to pond+great lawnand better connect park
- 6. EXISTING DAM



Concept B



How Planning Values and Needs Assessments are Met

- Pond
- Natural elements
- Trails
- Active recreation
- Parking
- Playground
- Passive recreation
- Activities/concessions
- Infrastructure investments
- Park connections, signage and wayfinding
- Major expenditures



- LEGEND**
1. ENTRY MONUMENT, VEHICULAR OR PEDESTRIAN
 2. CONCESSION PLAZA/ OVERLOOK
 3. EVENT LAWN
 4. POND PAVILION
 5. POND
 6. GREAT LAWN
 7. PLAYSCAPE AND PICNIC AREA
 8. NEW SHADE STRUCTURES
 9. FOOD TRUCK COURT
 10. ENHANCED PEDESTRIAN ARRIVAL
 11. ROCKY PICNIC NATURE PLAY AREA
 12. GRAND OVERLOOK (STAGE AND AMPHITHEATRE)
 13. ARRIVAL OVERLOOK, STAIRS AND ACCESS
 14. CREEK ACCESS
 15. SHOAL CREEK TRAIL
 16. WILDFLOWER GARDEN
 17. MAIN LOOP TRAIL-PAVED (TYP)
 18. DECOMPOSED GRANITE CONNECTOR TRAIL (TYP)
 19. SMALL PLAY AREA

CONCEPT B

Concept B



Pause to set up Poll Everywhere

PollEv.com/austinparks512, or

Text AUSTINPARKS512 to 22333

When Questions are activated, respond at **PollEv.com/austinparks512**, or
Text **AUSTINPARKS512** to **22333** once to join

Poll Everywhere



Based on the Planning Values, which overall concept better achieves this value?

Enhance and preserve park natural amenities



CONCEPT A



CONCEPT B

[PollEv.com/austinparks512](https://www.poll-ev.com/austinparks512), or
Text AUSTINPARKS512 to 22333



Based on the Planning Values, which overall concept better achieves this value?

Enhance and increase recreational amenities
(active and passive)



CONCEPT A



CONCEPT B

[PollEv.com/austinparks512](https://www.poll-ev.com/austinparks512), or
Text AUSTINPARKS512 to 22333



Based on the Planning Values, which overall concept better achieves this value?

Increase park connectivity and park identity



CONCEPT A



CONCEPT B

[PollEv.com/austinparks512](https://www.poll-ev.com/austinparks512), or
Text AUSTINPARKS512 to 22333



Based on the Planning Values, which overall concept better achieves this value?

Balance park amenities with other City infrastructure needs



CONCEPT A



CONCEPT B

[PollEv.com/austinparks512](https://www.pollevo.com/austinparks512), or
Text AUSTINPARKS512 to 22333



Do you prefer a more **organic** circulation concept or a more **organized** circulation concept?



[PollEv.com/austinparks512](https://www.poll-ev.com/austinparks512), or
Text AUSTINPARKS512 to 22333



Do you prefer engaging the **pond** from an **overlook** or by a low-profile **boardwalk**?



[PollEv.com/austinparks512](https://www.poll-ev.com/austinparks512), or
Text AUSTINPARKS512 to 22333



Do you prefer **multiple smaller sized pavilions** throughout the park, or **one large centralized pavilion**?



[PollEv.com/austinparks512](https://www.pollevo.com/austinparks512), or
Text **AUSTINPARKS512** to **22333**



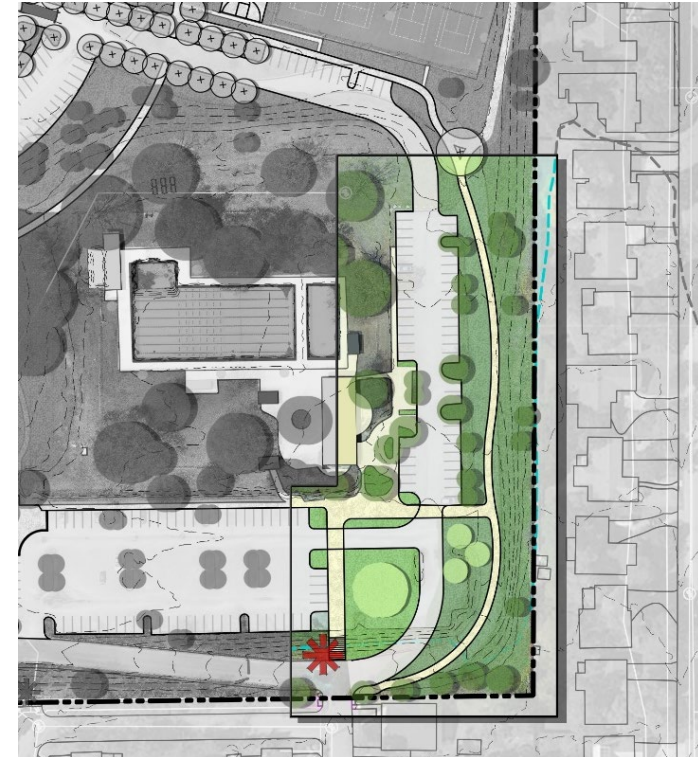
Do you prefer:

vehicular based circulations
(drop offs, dedicated park roads)



OR

more of a **pedestrian-based** circulation
(pedestrian paths, less pass-through park roads)?



[PollEv.com/austinparks512](https://www.poll-ev.com/austinparks512), or
Text AUSTINPARKS512 to 22333



Is there a planned amenity at the park that we are missing in this matrix?

Amenity (Alphabetical Order)	Planning Value
Baseball Facility/Bldg Improvements	B,C
Entry Sequence, Signage or Features	C
Improved/Expanded Trails	B,C
Kids 'Bike Playground' (Pump Track)	B
MSE Wall Removal	A,B,C,D
Native Habitat - Riparian & Ephemeral Channels	A,B,C,D
Native Habitat - Native Grass & Wildflower	A,B,C
Native Habitat - Woodlands	A,B,C
Native Tree Plantings - Design Based	A, B
Open Lawn	B,C
Park Signage (Directional)	C
Park Signage (Interpretive)	B,C
Parking Removal and Circulation Modifications	B,D
Pedestrian Bridge Connection to Shoal Creek Blvd	C
Pedestrian Bridge Improvements (deck)	B,C
Picnic Opportunities	B
Playscape (Ages 2-5)	B,C
Playscape (Ages 5-12)	B,C
Playscape Swingset	B
Pond Improvements	A, B,C, D
Public Art	B,C
Restroom (Servicing Greater Park Area)	B,D
Restroom (Servicing Playscape)	B,D
Shade Structures	B

[PollEv.com/austinparks512](https://www.pollevo.com/austinparks512), or

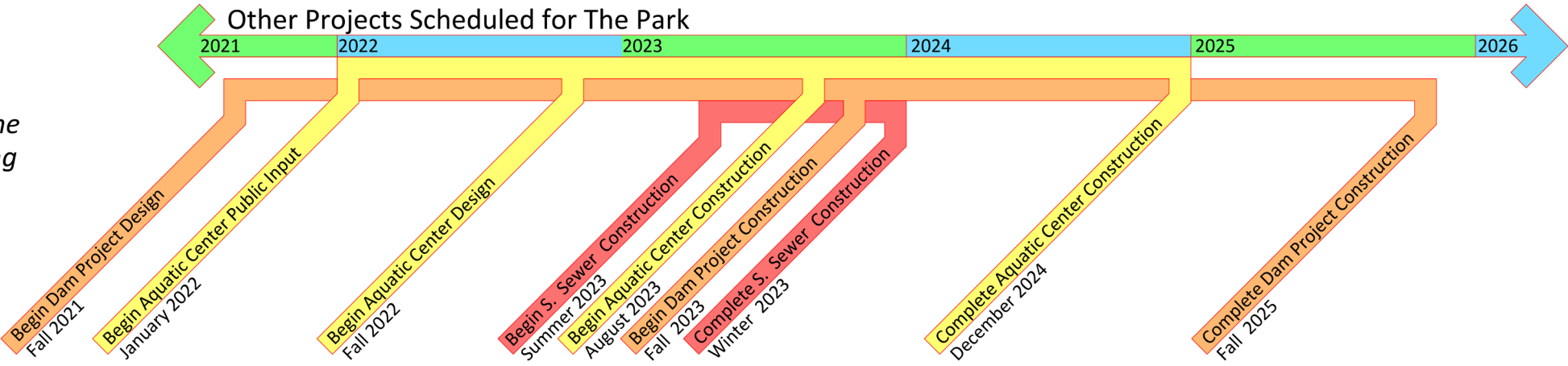
Text AUSTINPARKS512 to 22333





Phase the Work & Fund the Projects

*Note:
This is an estimated timeline based on current scheduling and is subject to change.*



Next Steps





Comments & Questions - Use the chat or raise your hand feature to ask questions and provide comments.



One More Community Meeting

- August 3, 2021 – Review the Draft Vision Plan

Speak Up Austin!

- Share your stories about the Park online:
<https://www.speakupaustin.org/sheffieldnwpark>

Contact the City

- Park Vision Plan – **Darcy Nuffer** - darcy.nuffer@austintexas.gov
- Aquatic Center Renovation – **Patrick Beyer** - patrick.beyer@austintexas.gov
- Dam Renovation Project – **Annabell Ulary** - annabell.ulary@austintexas.gov

Thank You For Being Involved in Your Park – We Want to Hear From You!

