



Oertli Neighborhood Park Design Development Plan

Image from Pearl Retreat Drive, showing Historical Marker

Virtual Community Meeting #2

May 19, 2021
Meeting is being recorded

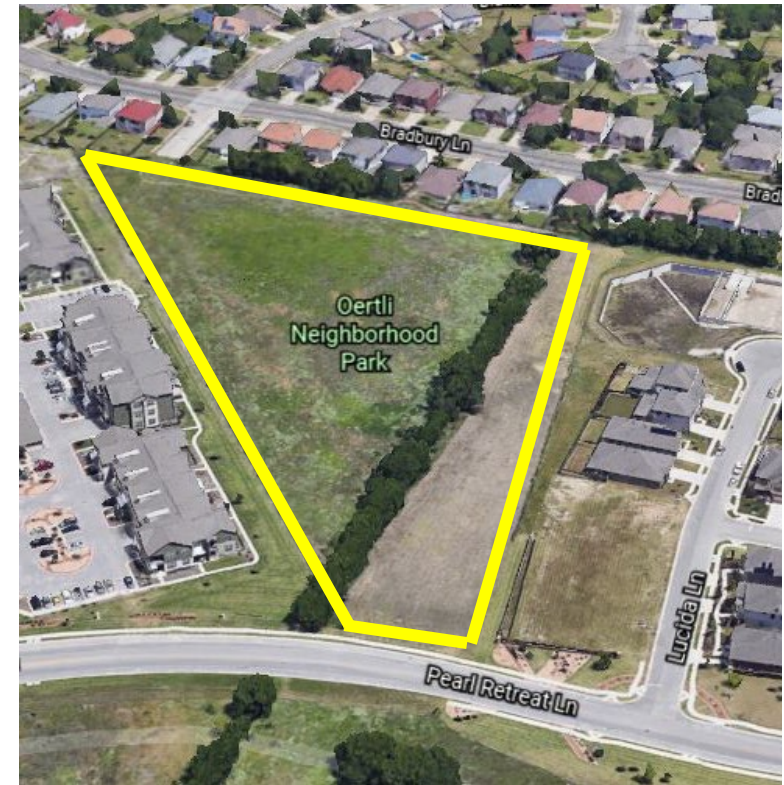


Virtual Info: Zoom Housekeeping

- Participants can join by computer and/or phone
- This session is being recorded and will be posted at the conclusion.
- Participants will stay muted through presentation.
- Questions can be shared in the Comments section.
 - A short period for responses is available for clarifications, then a longer question time at the end of the presentation.
- “Raise hand” for sharing comments during questions session at end of presentation.

Agenda

- Welcome and Introduction
- Meeting Overview: Virtual Meeting Info and Agenda
- Project Team introduction
- Project Background
- Project Timeline
- What we learned from Community Meeting #1
- Proposed Concept Diagrams
- Pause for questions in the chat
- Guided Questions
- Next Steps
- Questions and Comments



Introductions: Meeting Team



Merritt Nolte-Roth, PARD Community Services Coordinator



James Wheeler, PARD Parks Development, Project Coordinator



David Cazares, MWM DesignGroup, Project Design Consultant

Introductions: Primary Contact

Primary Contact

James Wheeler, PLA

Landscape Architect II

James.wheeler@austintexas.gov



Project Design Consultant

MWM DesignGroup



Project information provided at

<https://www.austintexas.gov/OertliPark>



Project Background

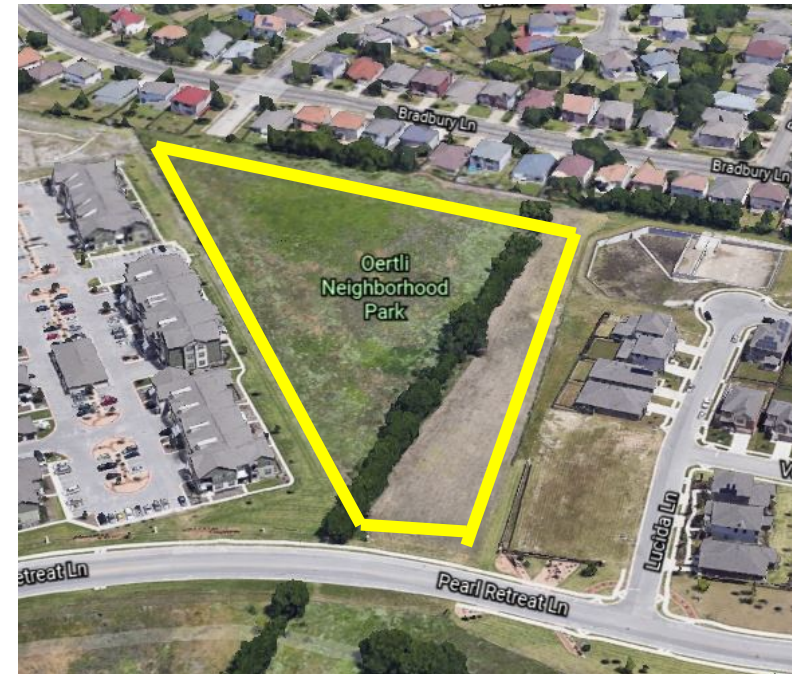
Oertli Neighborhood Park ★

- Located in Northeast Austin
Near Tech Ridge and E. Parmer Lane
- The park is named after the Oertli Dairy Farm. Which was Travis County's last dairy, closing its doors in 2001.
- A 6-acre portion of the Oertli Family property was dedicated to parkland in 2013.
- Due to its size and adjacency to residential housing, Oertli Park is designated as a Neighborhood Park.



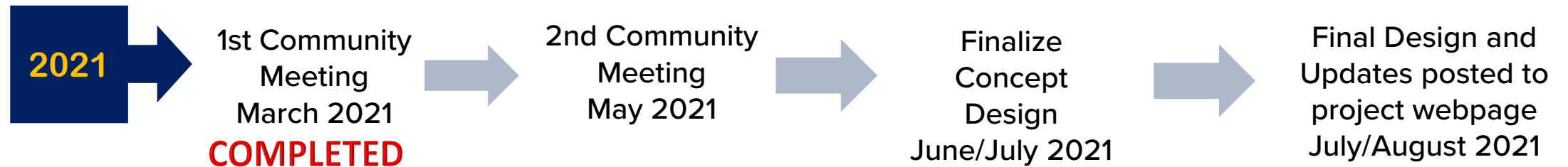
Project Background

- A parking lot is not being proposed for Oertli Park, due in part to the shape of the lot, size, and narrow street access.
- No basketball or sport court is proposed due to zoning restrictions. Filing an amendment to the zoning would delay construction by over a year.
- Interest in a sport court amendment from survey 1 did not provide enough positive requests to pursue making changes.
- The design teams plans to incorporate alternate activities for play and plenty of open lawn space.



Project Timeline

Design Phase



Permitting and Construction Phase (Preliminary)

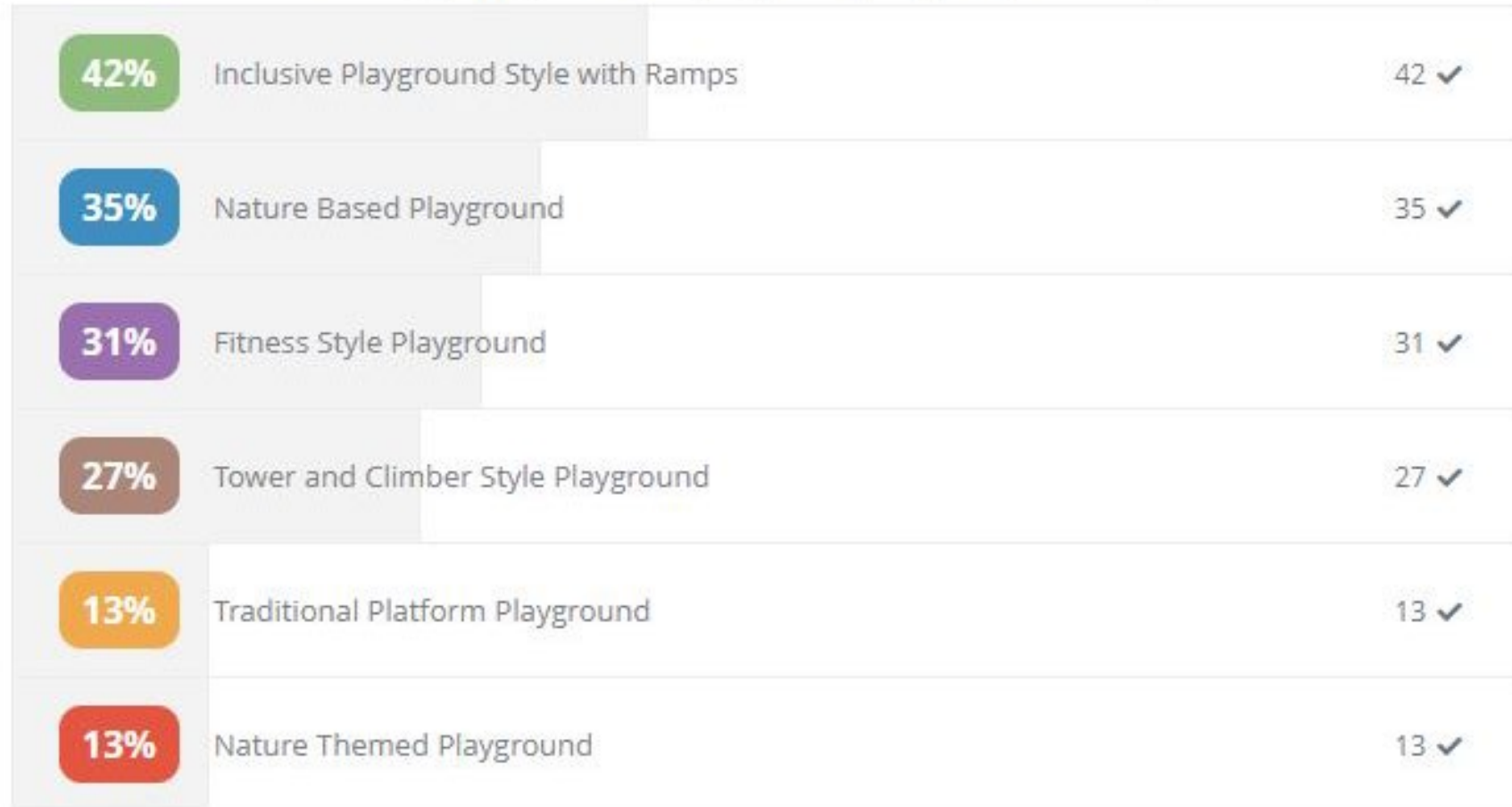


Anticipated Park Opening – Spring 2023



What we learned from Community Engagement #1

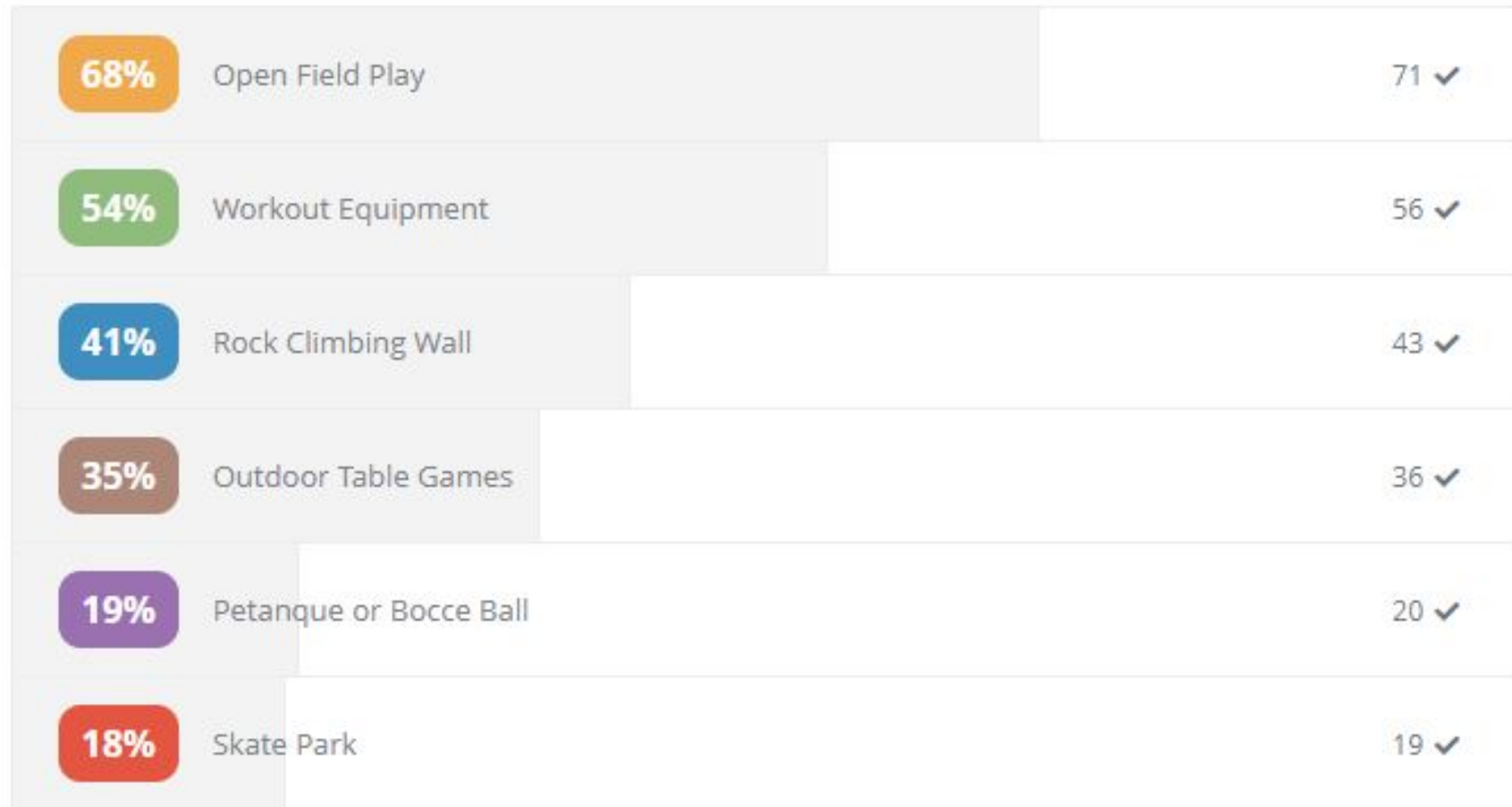
Which is your preferred playground style? (Select up to 2)



100 Respondents

What we learned from Community Engagement #1

Please select your preferred activities for Oertli Park. (Select up to 3)



104 Respondents

What we learned from Community Engagement #1

Please select your preferred amenities for Oertli Park. (Select up to 3)



105 Respondents

What is one word that describes the neighborhood surrounding Oertli Park?



What other ideas for amenities or activities would you like the project team to explore?



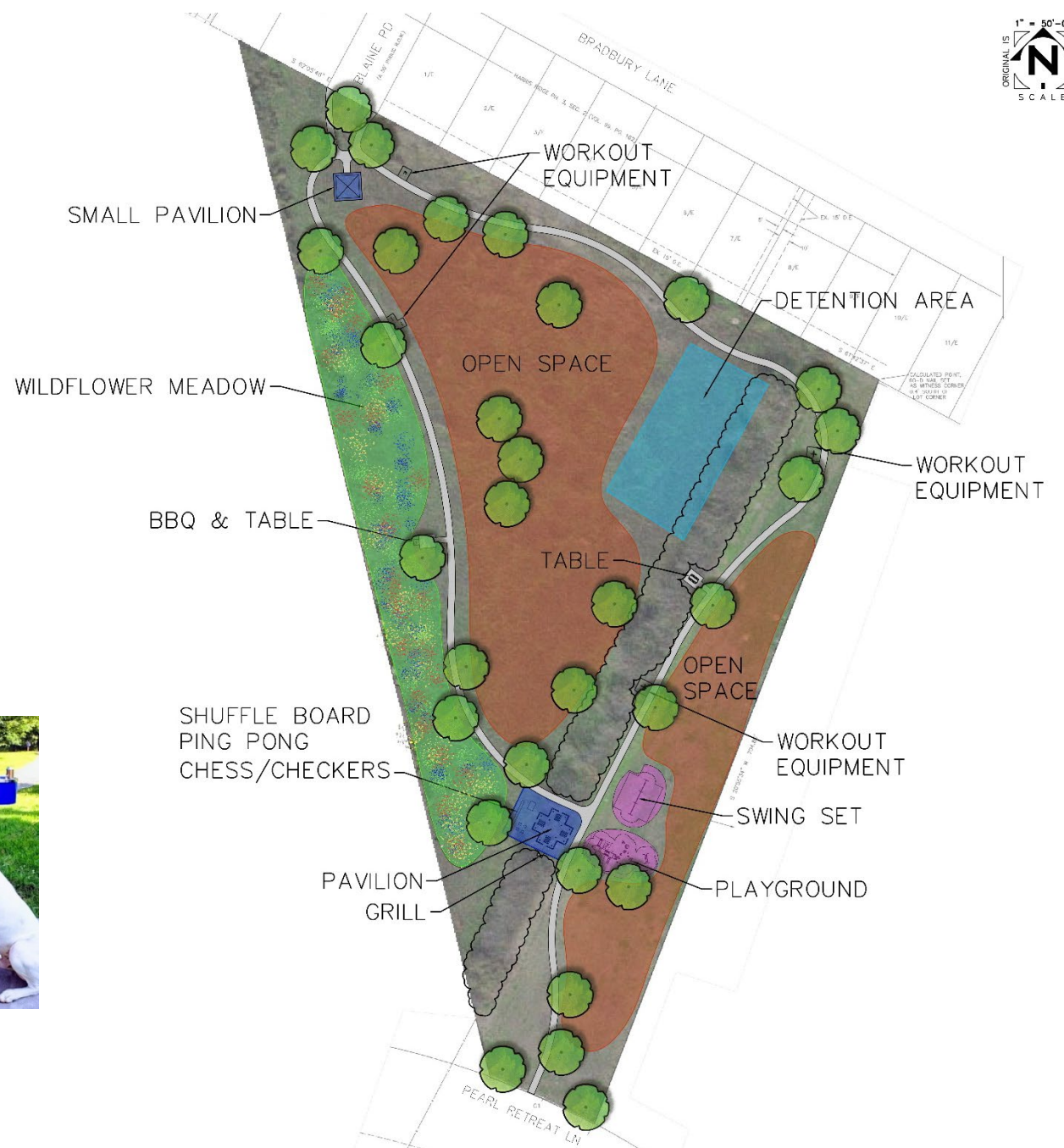
What we learned from Community Engagement #1

- After review of the survey data and all responses, the design team has produced three (3) park concepts showing different layouts of amenities and play spaces.
- No single plan will be selected from these concepts. The final site plan will be a combination of the concept plans shown, that take into consideration the community's overall needs and desires.
- David Cazares from MWM Design Group will now introduce these concepts.

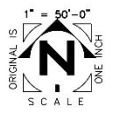
Concept Plan A



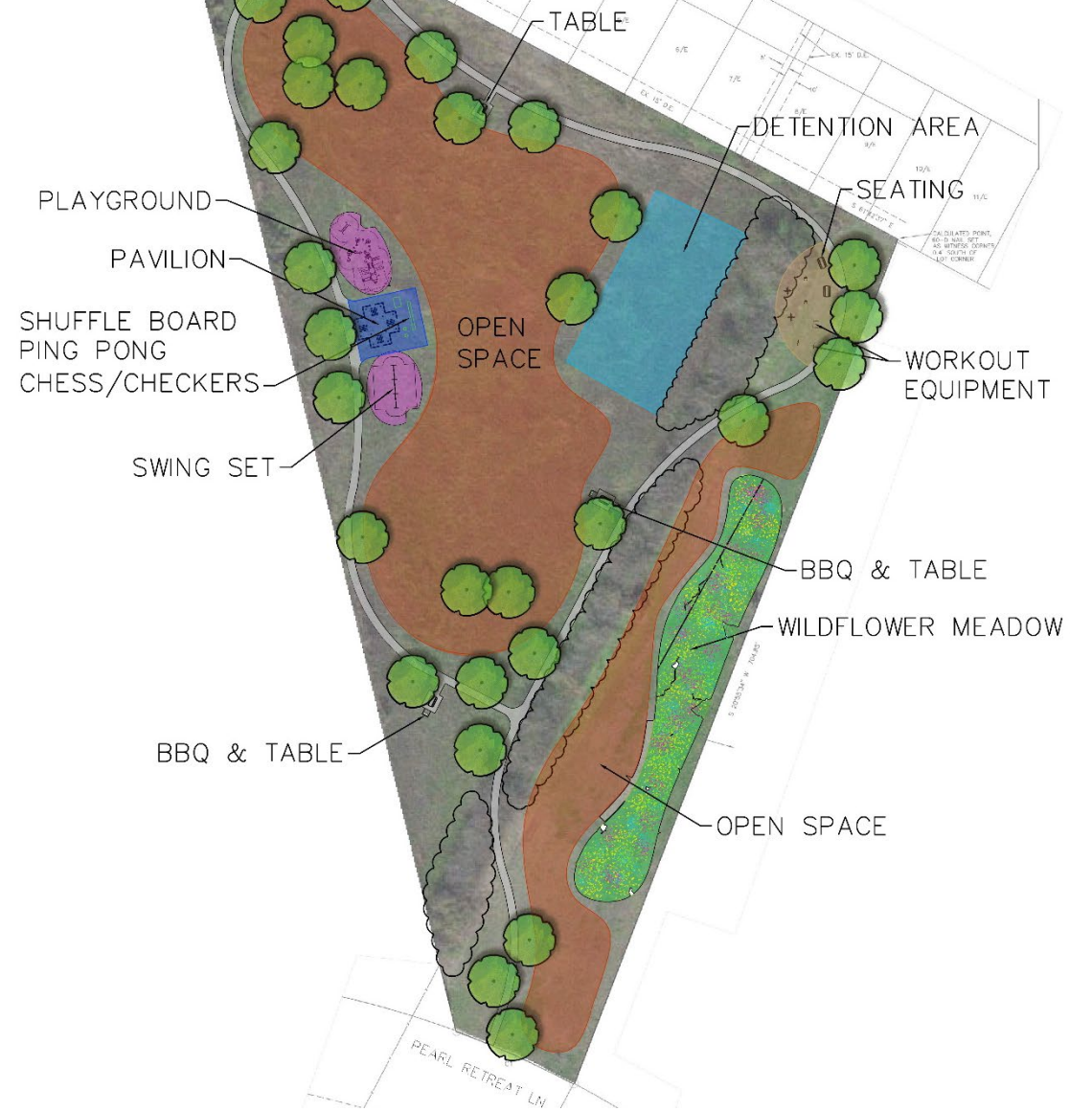
Typical park and playground amenities



Concept Plan B



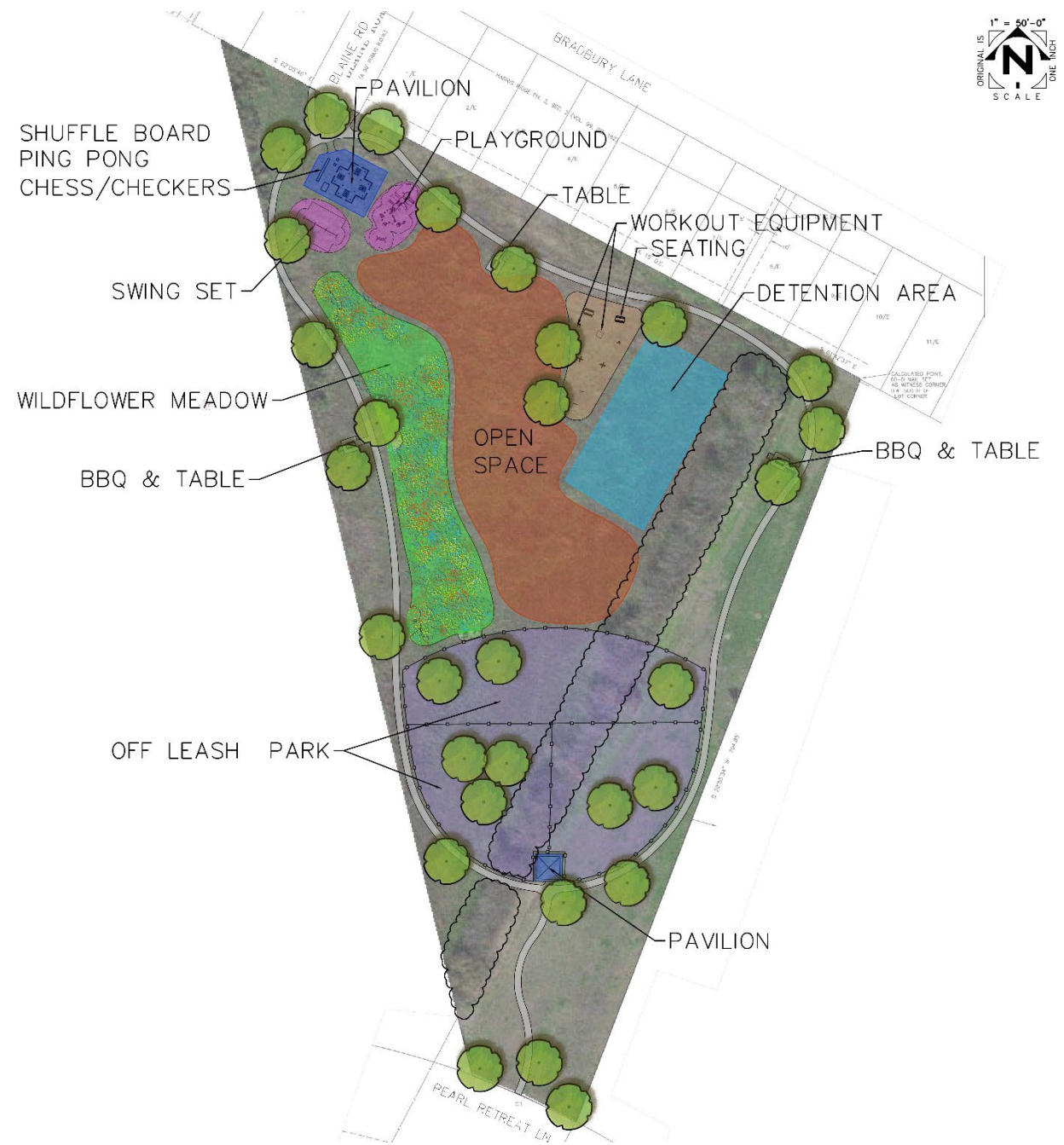
Fitness and Play Ideas



Concept Plan C



Typical Off-leash Area Features



Pause for Q&A from Chat

- 2 minutes to address questions for clarification
- Additional questions or comments that we don't get to now can be asked in the chat, at the end of meeting or by emailing the project contact.

Now we want to hear from you!



Monarch and dandelions, Oertli Park July, 2020

Guided questions

- Does the off-leash area make efficient use of the park space?
- Which playground location will best activate the park?
- Which workout equipment layout will encourage the most use?
- Which size pavilion shelter will better serve the community?
- What activities would you utilize at the park?
- What do you like best about Concept A?
 - Concept B?
 - Concept C?



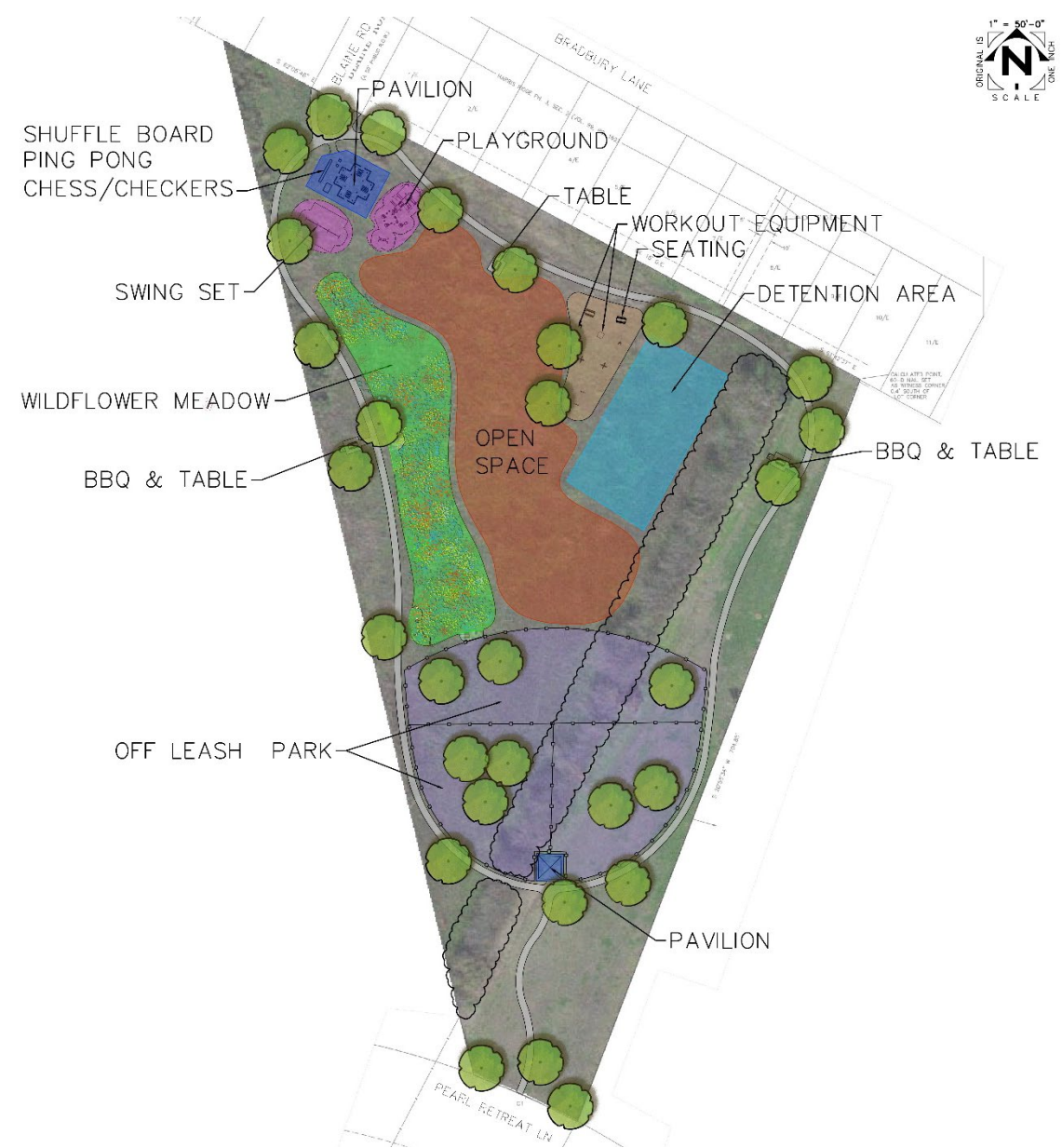
When Questions are activated, respond at [PollEv.com/austinparks512](https://www.poll-ev.com/austinparks512), or Text **austinparks512** to **22333** once to join

Does the off leash area concept provide efficient use of park space?

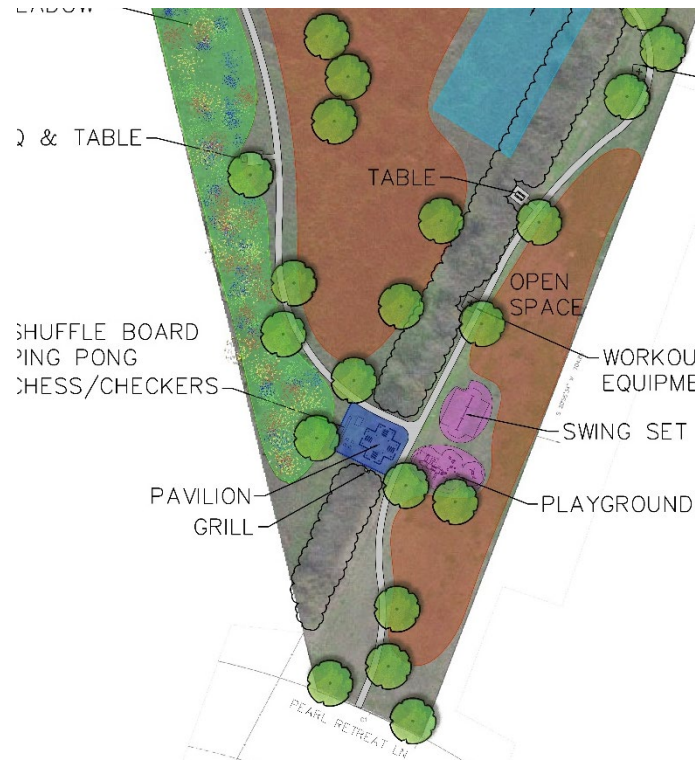


Size of off leash area shown on plan is typical for large and small dogs with rotating maintenance zone.

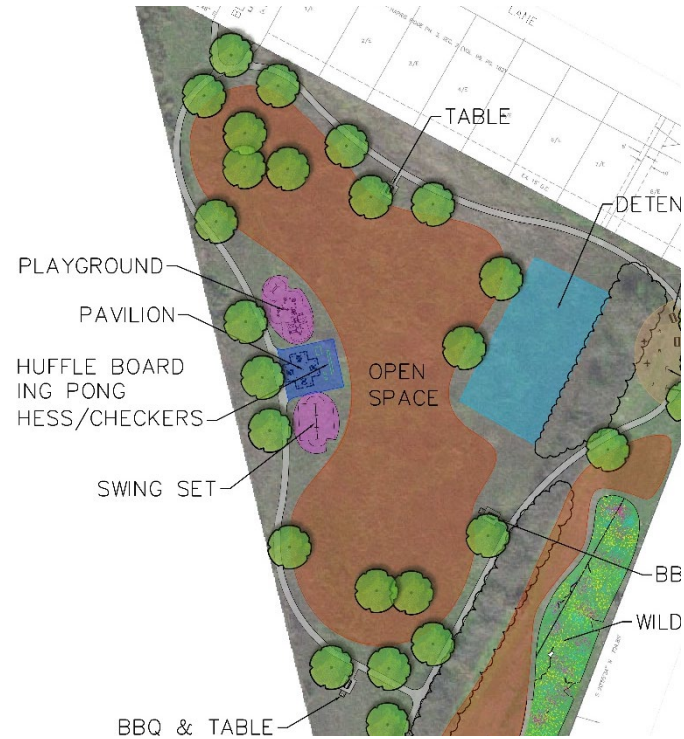
Access and gates not shown for simplicity



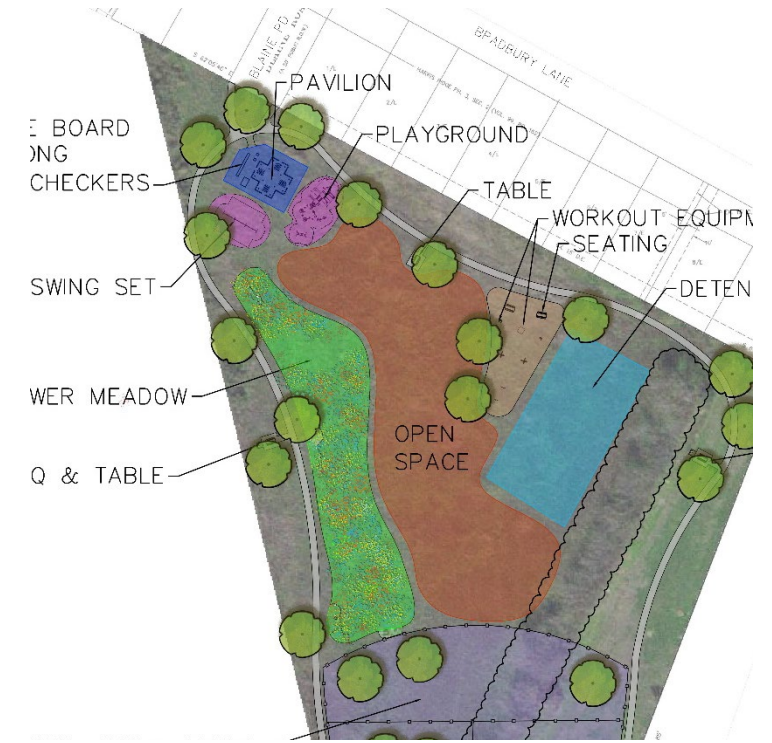
Which playground location will best activate use in the park? (Pink Color)



A. Near Pearl Retreat



B. In the middle of Oertli Park



C. Near Blaine Rd.



When Questions are activated, respond at [PollEv.com/austinparks512](https://www.pollEv.com/austinparks512), or Text **austinparks512** to **22333** once to join

Which workout equipment layout will encourage the most use?

A. Group Workout Zone



B. Workout equipment spaced out along loop trail



Which size pavilion shelter will better serve the community? One Large or Several Small?



A. Large pavilion shelter



B. Several small ones spaced out near amenities

What activities would you utilize at the park?

Pick 2



A. Outdoor Table Tennis



B. Chess or Checkers

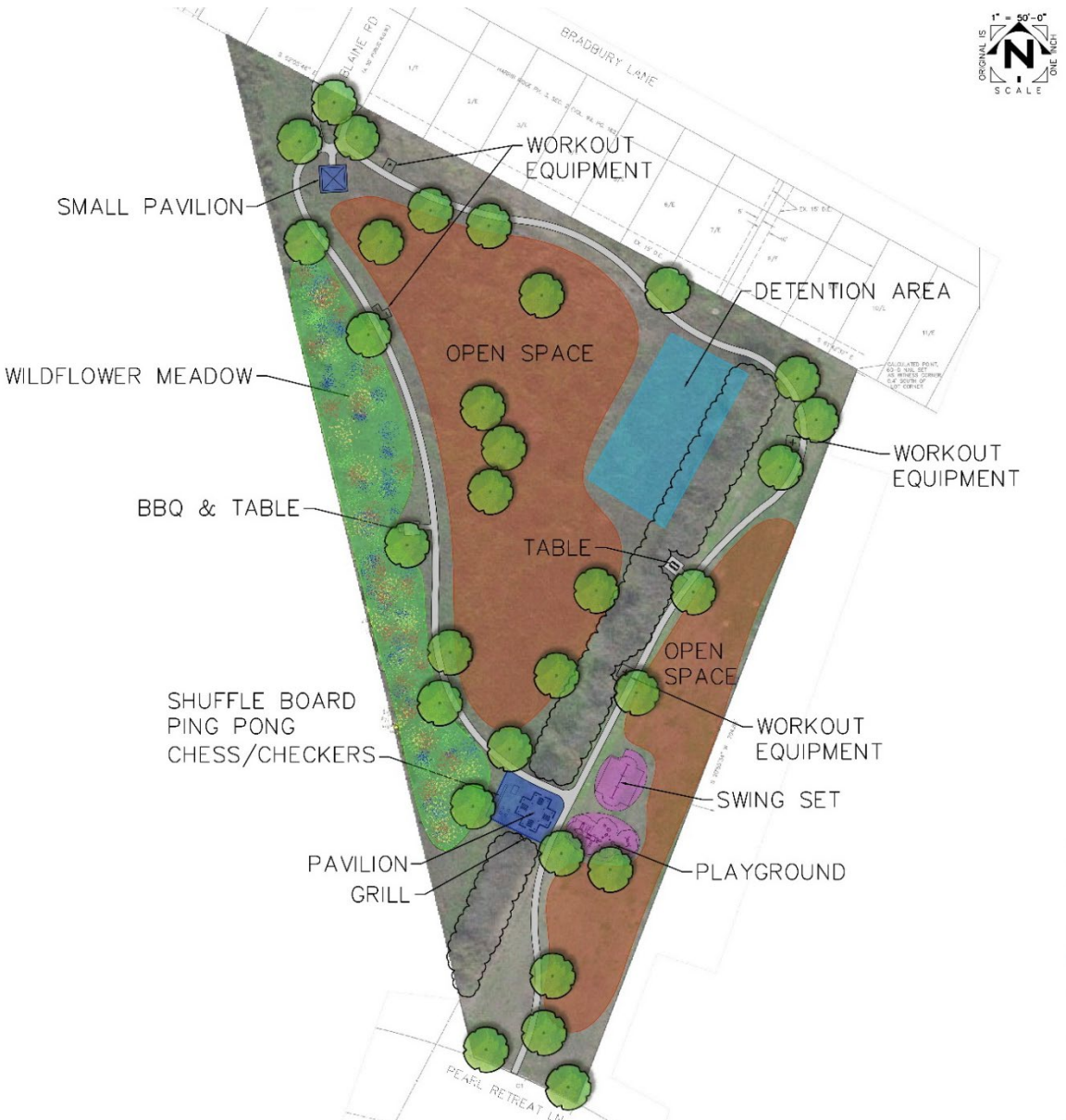


C. Bocce



D. Shuffleboard

What do you like about Concept A?



Select multiple:

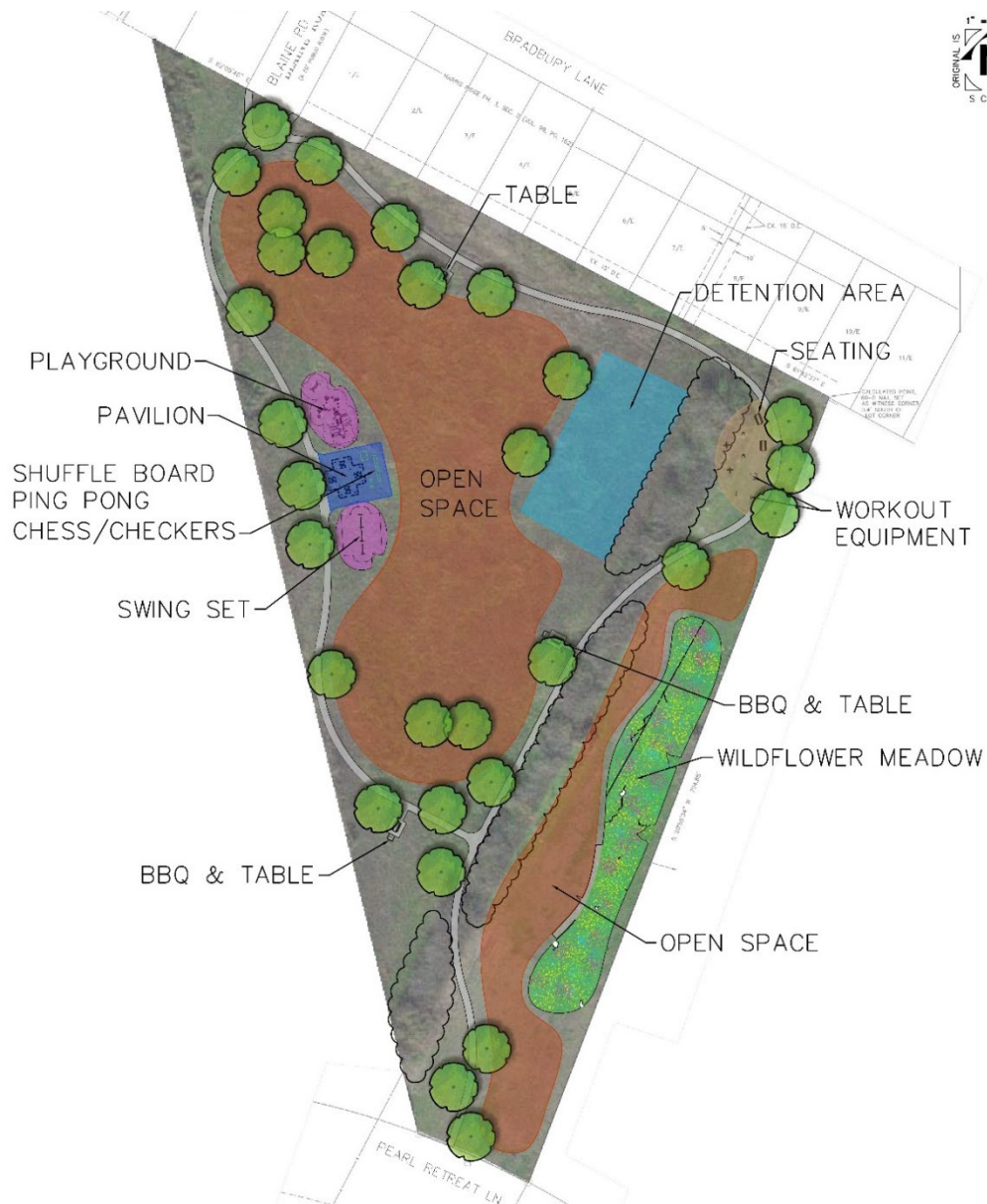
- Wildflower meadow along west perimeter
- Work equipment spaced out along loop trail
 - Playground located by Pearl Retreat
 - Pavilion shelter at Blaine Rd entrance
 - Lots of open space
 - No off-leash area

Additional comments can be added to the chat

When Questions are activated, respond at [PollEv.com/austinparks512](https://www.pollevo.com/austinparks512), or Text [austinparks512](https://www.austinparks512.com) to 22333 once to join



What do you like about Concept B?



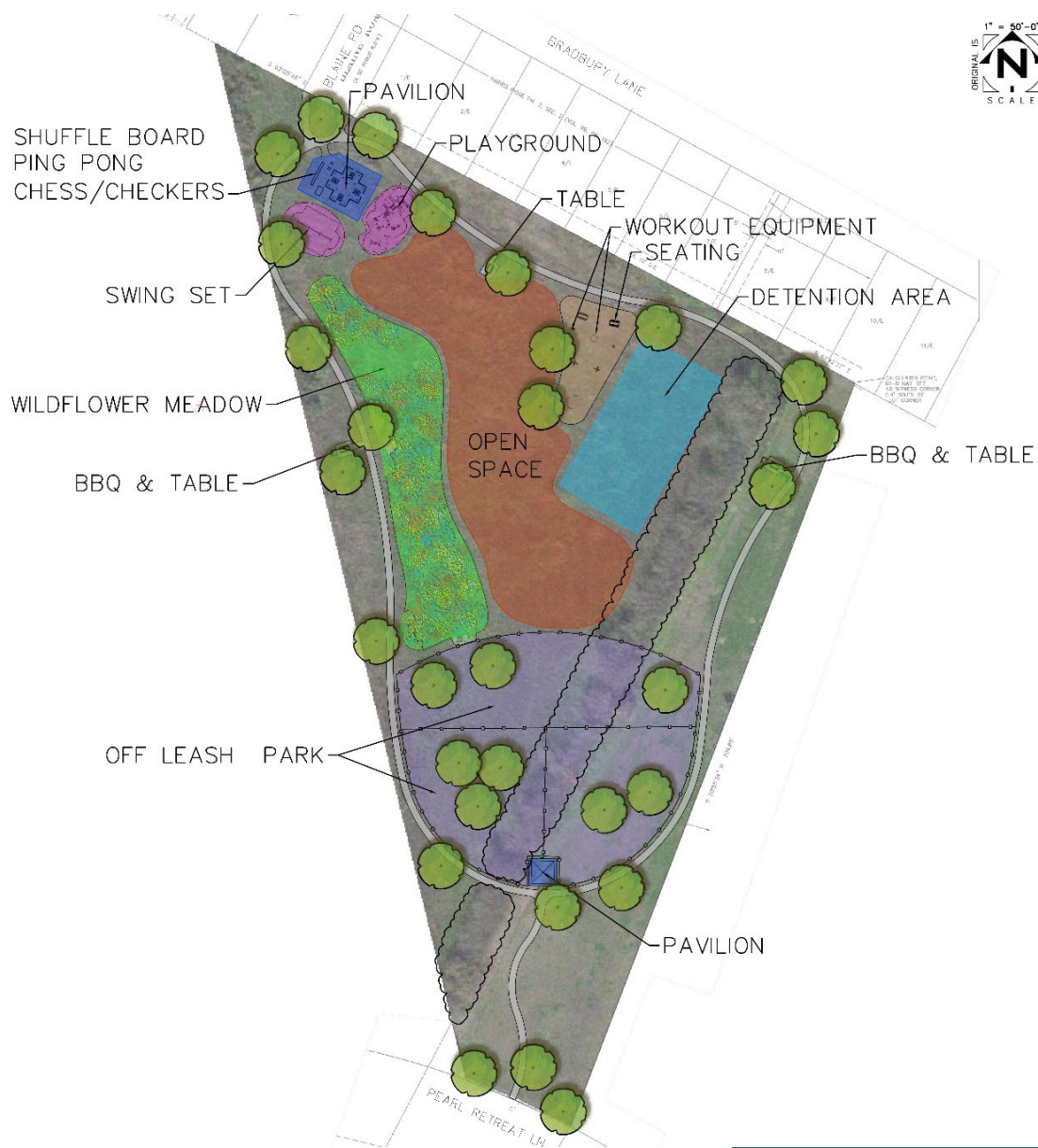
Select multiple:

- Wildflower meadow along east perimeter
- Work equipment grouped in private area
- Sidewalk layout moves through tree row
- Playground and lawn in middle of park
 - Single, large pavilion shelter
 - No off-leash area

Additional comments can be added to the chat

When Questions are activated, respond at [Pollevo.com/austinparks512](https://www.pollevo.com/austinparks512), or Text [austinparks512](https://www.pollevo.com/austinparks512) to 22333 once to join





What do you like about Concept C?

Select multiple:

- Wildflower meadow inside trail loop
- Work equipment grouped near open space lawn
 - Playground location near Blaine Rd.
 - Single, large pavilion shelter
 - Off leash area in middle of tree row
- Secondary pavilion shelter near off leash area

Additional comments can be added to the chat

What additional comments do you have?



Next Steps

Share with Others

- You can provide additional feedback and view a recording of tonight's meeting by visiting the Parks and Recreation Departments project webpage:
- <https://www.austintexas.gov/OertliPark>
- Sign up online for email updates for latest design plans and future construction progress.

Public Survey

- The poll everywhere data from today's meeting will be collected in conjunction with an online public survey.
- Survey: PublicInput.com/OertliPark2 (open now through June 6, 2021)
- Link will be provided on project webpage and survey results will be posted online

Design Phase and Construction

- The design team will review the data from today's community meeting and upcoming survey, then work to incorporate changes into final plans.
- After completion of design phase, PARD will send email notifications and update the project webpage
- Visit <https://www.austintexas.gov/OertliPark>



Questions & Comments



Project Contact
James Wheeler, PLA
james.wheeler@austintexas.gov