

ZILKER PARK VISION PLAN

SMALL GROUP DISCUSSION: OPERATIONS & MAINTENANCE

APRIL 29, 2021

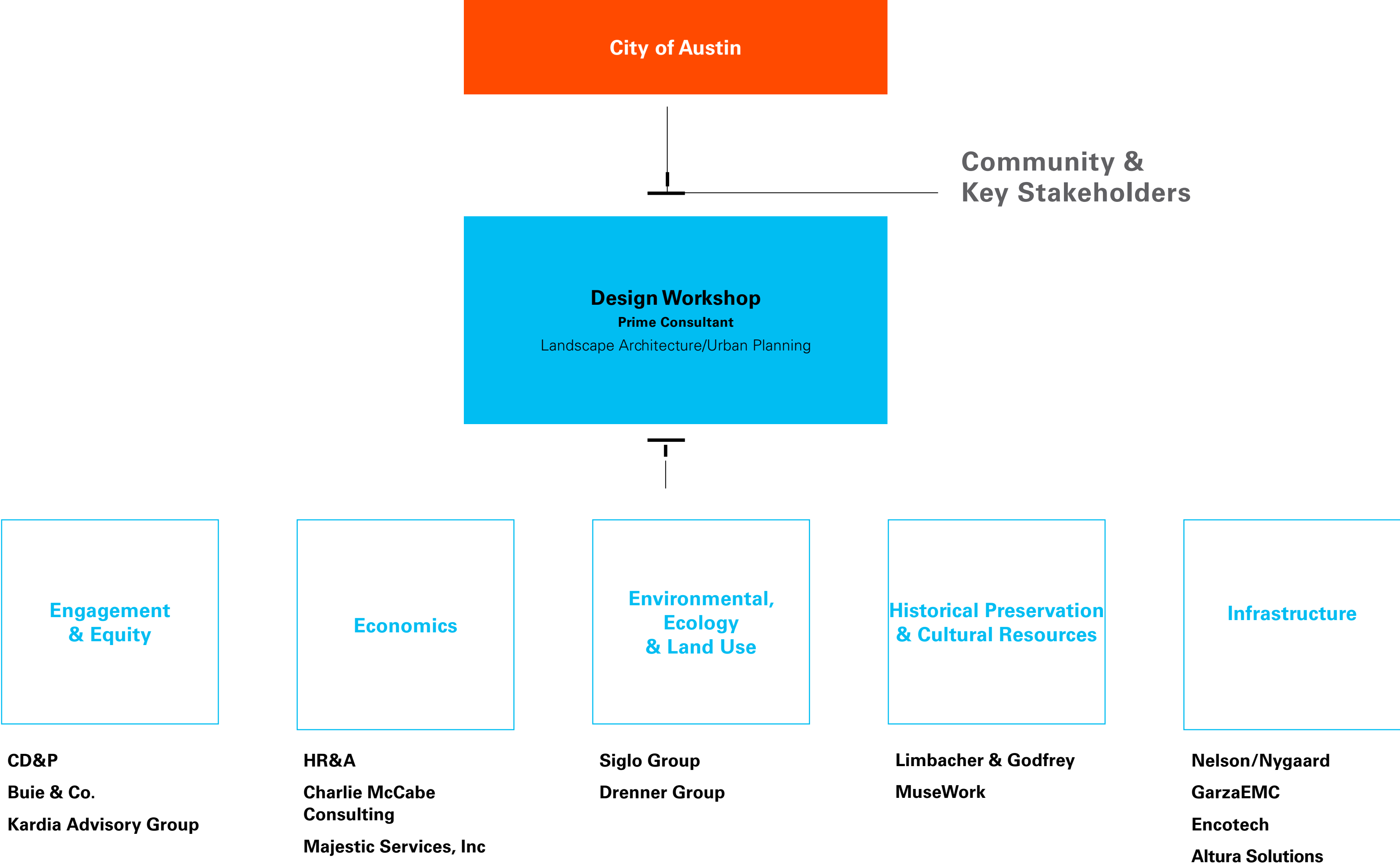


DESIGNWORKSHOP



INTRODUCTION

TEAM OVERVIEW



CLIENT/TAG OVERVIEW

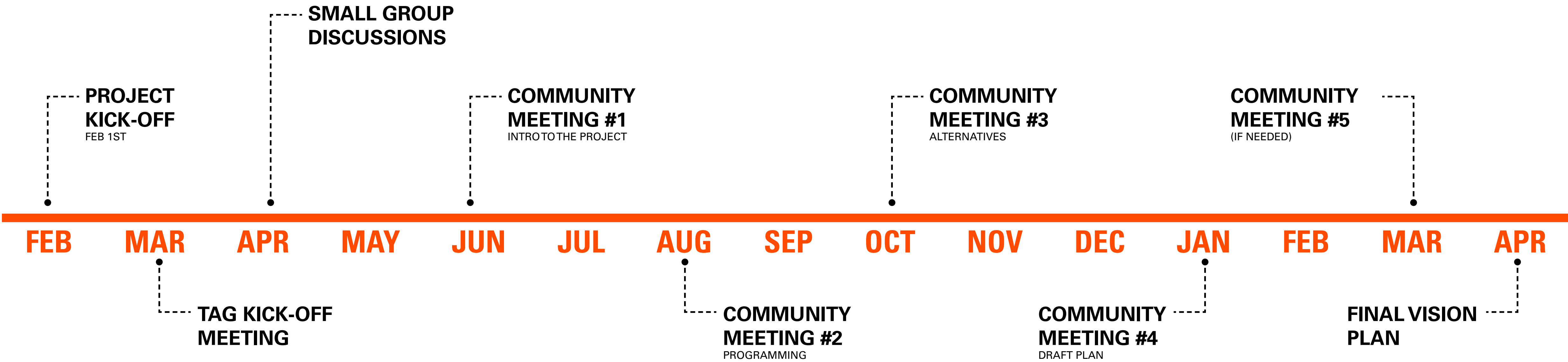
Client Group

City of Austin
Parks and Recreation Department
Ricardo Soliz
Gregory Montes
Megan Eckard
Justin Schneider

Technical Advisory Group

PARD
ATD
Public Works
Watershed Protection
Office of Real Estate Services
Marketing and Communications Office
Austin Water
Austin Energy
Management Services
Austin Resource Recovery
Cap Metro
TXDOT

SCHEDULE



Strategic Kick-Off and Project Initiation

- Project Work Plan
- Kick-Off Meeting
- Technical Advisory Group Meetings
- Progress Reports

Site and Contextual Analysis and Data

- Site Analysis and Existing Conditions Report
- Presentation of the Site Analysis and Existing Conditions Report
- Presentation of the Site Analysis and Existing Conditions Report to City Commission, Boards, City Manager and City Council
- Community Wide Survey

Project Meetings

- Project Meetings Materials
- Stakeholder Contract
- List Meeting Minutes and Summaries

Stakeholder/Public Participation

- Public Outreach and Engagement Plan
- Public Engagement and Outreach

City Staff, Public Review/Boards, Commissions, Council Review

- Draft Vision Plan
- Final Draft Vision Plan Document
- Presentation of Final Draft Vision Plan Document to City Commission, Boards, City Manager and City Council

Vision Plan Report Preparation

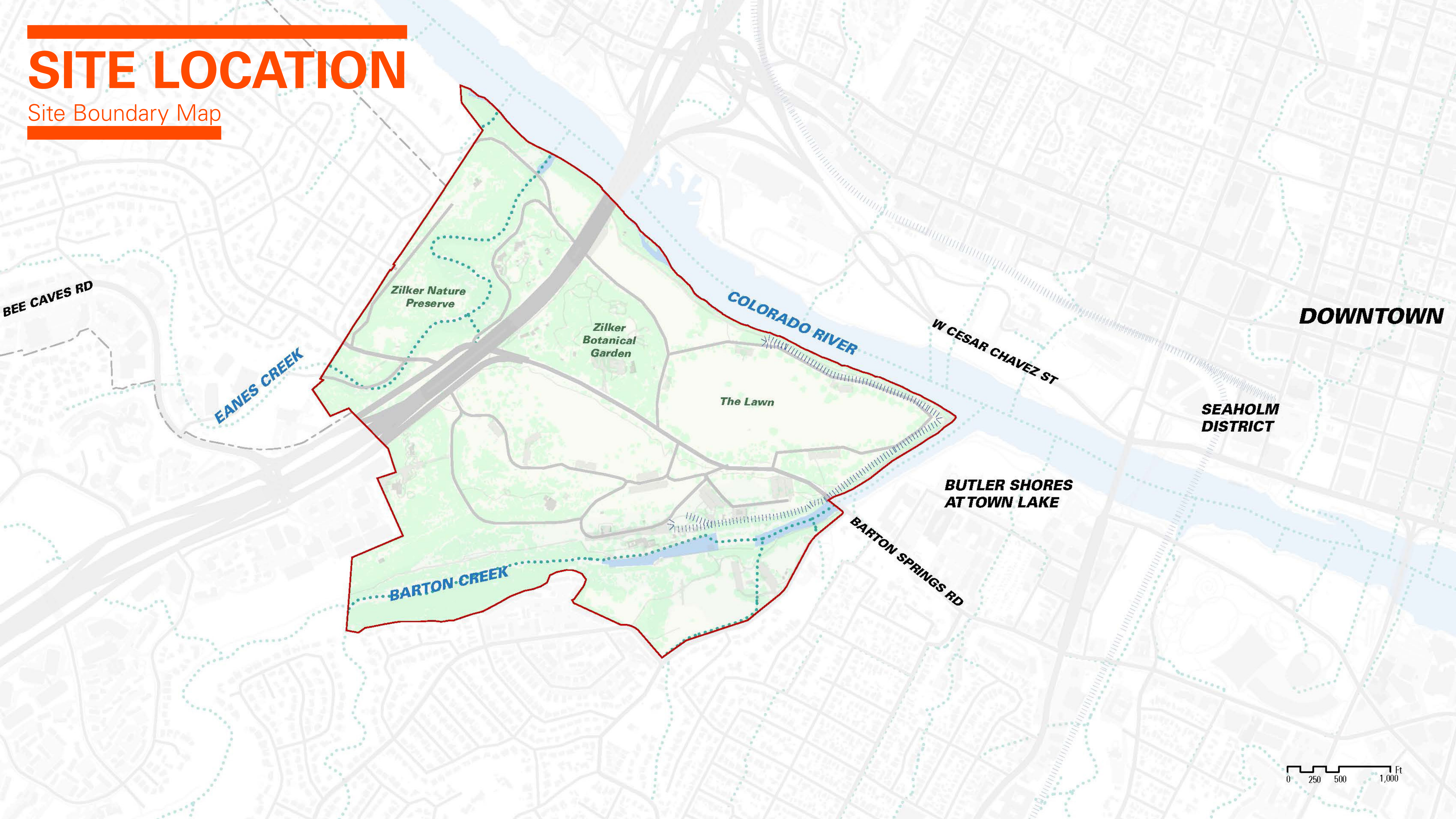
- Provide a Needs Assessment Report
- Preliminary Vision Plan Concepts
- Final Vision Plan Document

An aerial photograph of Zilker Park in Austin, Texas, bathed in a warm, golden-orange light. The image shows a wide river on the left, a dense line of trees in the middle, and a large, open grassy area on the right. In the background, the city skyline is visible under a hazy sky. The text "ZILKER PARK" is centered in the middle of the image, with a white horizontal bar above it.

ZILKER PARK

SITE LOCATION

Site Boundary Map



BEE CAVES RD

EANES CREEK

Zilker Nature Preserve

Zilker Botanical Garden

The Lawn

COLORADO RIVER

W CESAR CHAVEZ ST

DOWNTOWN

SEAHOLM DISTRICT

BUTLER SHORES AT TOWN LAKE

BARTON CREEK

BARTON SPRINGS RD

0 250 500 1,000 Ft