



Lower Buttermilk Branch Stream Restoration

PUBLIC MEETING

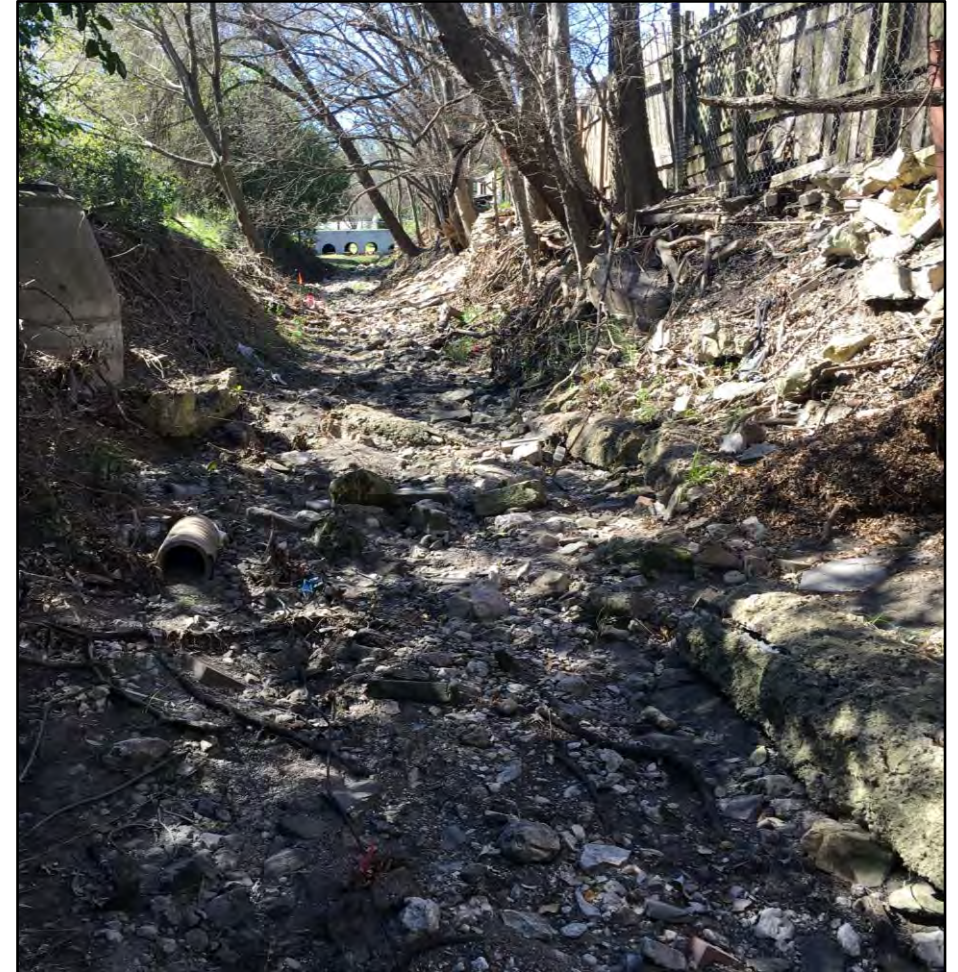
December 5, 2022

www.AustinTexas.gov/Buttermilk



Welcome and Agenda

- Introductions
- Watershed Protection Department
- Project Scope
- Study Area Photos
- Schedule and Next Steps
- Public Input





Introductions

Sponsoring Department: Watershed Protection Department

Project Sponsor: Donald Heisch, P.E., CFM

Sponsor Manager: Eric Loucks, P.E.

Communications: Zach Jarjoura

Managing Department: Department of Public Works

Project Manager: Minda Sarmiento, P.E.

Consulting Engineer: Carollo Engineers Inc.

Project Manager: Heather Harris, P.E.

Watershed Protection Department

Mission:

Protect lives, property, and the environment of our community by reducing the impact of:

- Flooding
- Erosion
- Water Pollution





Flooding





Erosion





Water Quality





Project Scope

Lower Buttermilk Branch



Current Erosion Summary

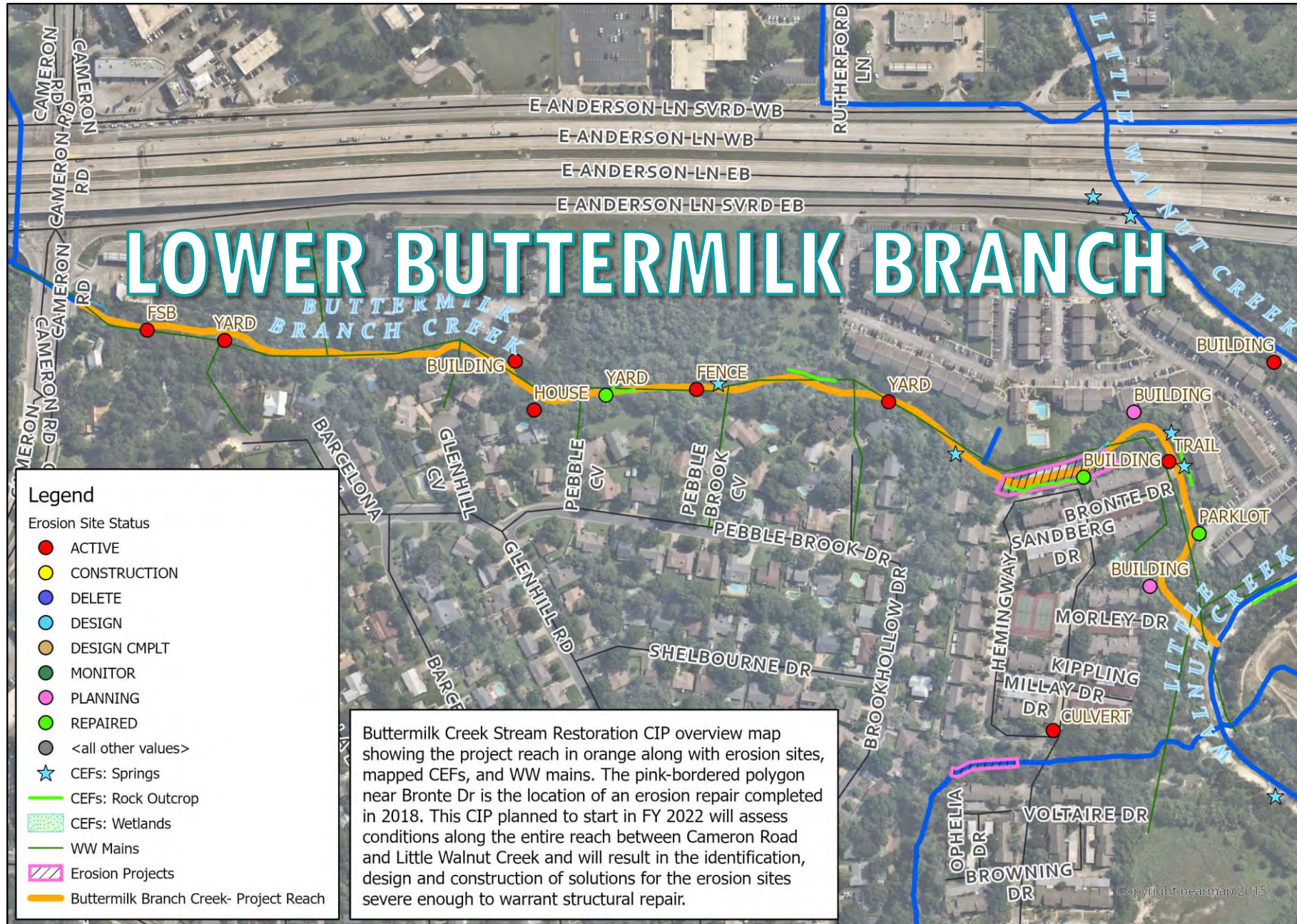
Widespread incision (to bedrock), channel widening, and bank erosion

Ten documented active erosion sites in the reach:

- 3 Buildings
- 2 Yards
- 1 each of: House, Shed, Parking lot, Fence, and Trail
- Not including one erosion site that was “repaired” by AWU, but may need additional work
- Consultant will conduct whole reach assessment to document additional sites of concern and aid in project prioritization



Location Map





Future Issues | Project Goals

- Creek bottom and banks eroding
- Damage to public and private property
- Water quality pollution
- Degradation of stream



- Stabilize and repair channel
- Protect property from future damage
- Protect trees and minimize tree removal
- Plant native vegetation
- ***The project will not worsen flooding***



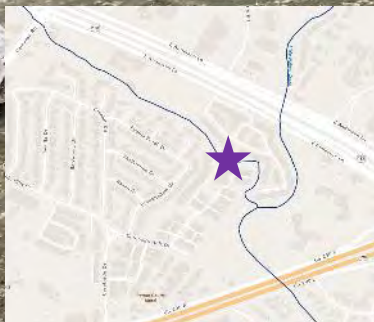
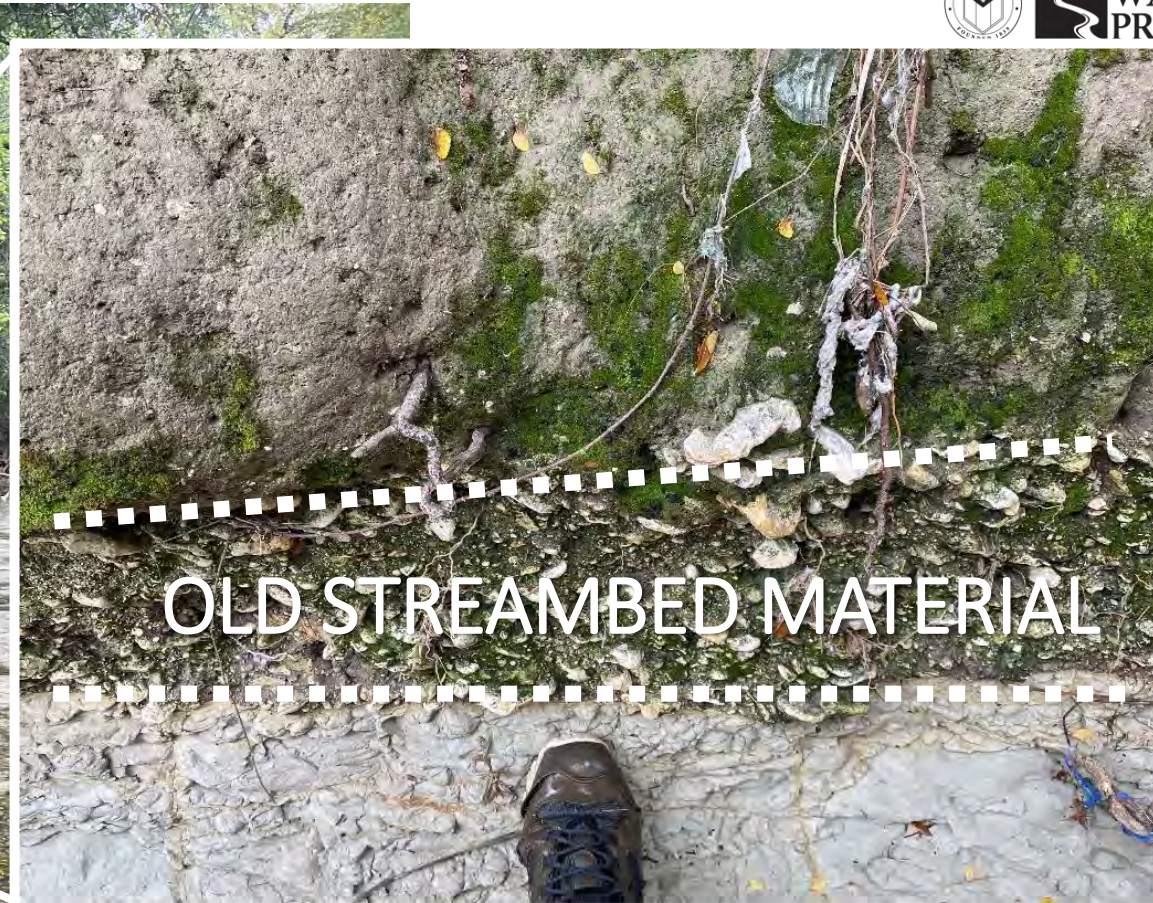


Study Area Photos

Lower Buttermilk Branch





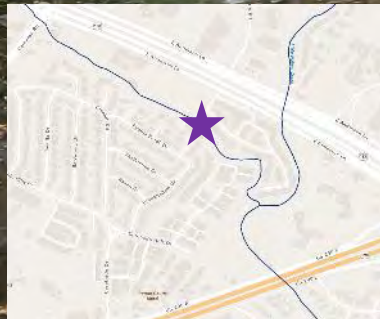
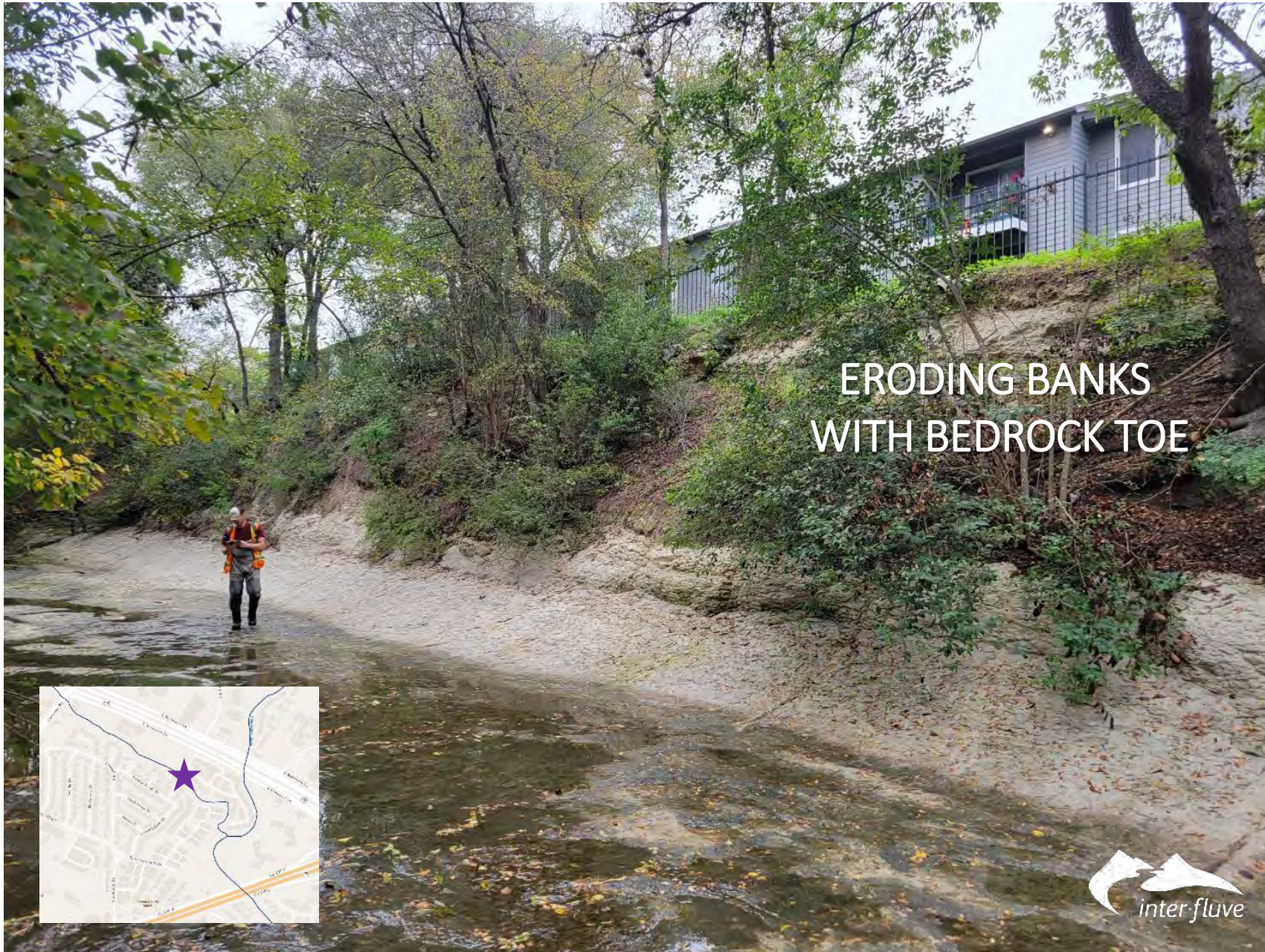




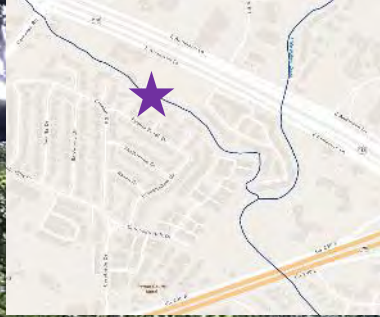
NO RIPARIAN BUFFER







**ERODING BANKS
WITH BEDROCK TOE**



Wastewater Manhole







Schedule and Next Steps

Fall 2022 – Data Collection and Public Input

Winter 2022 – Complete Initial Geomorphic Assessment

Spring 2023 – Initiate Preliminary Engineering

- Hydraulic Modelling
- Geotechnical Investigations
- Alternatives Analysis

Spring 2024 – Initiate Design

Summer 2025 – Construction



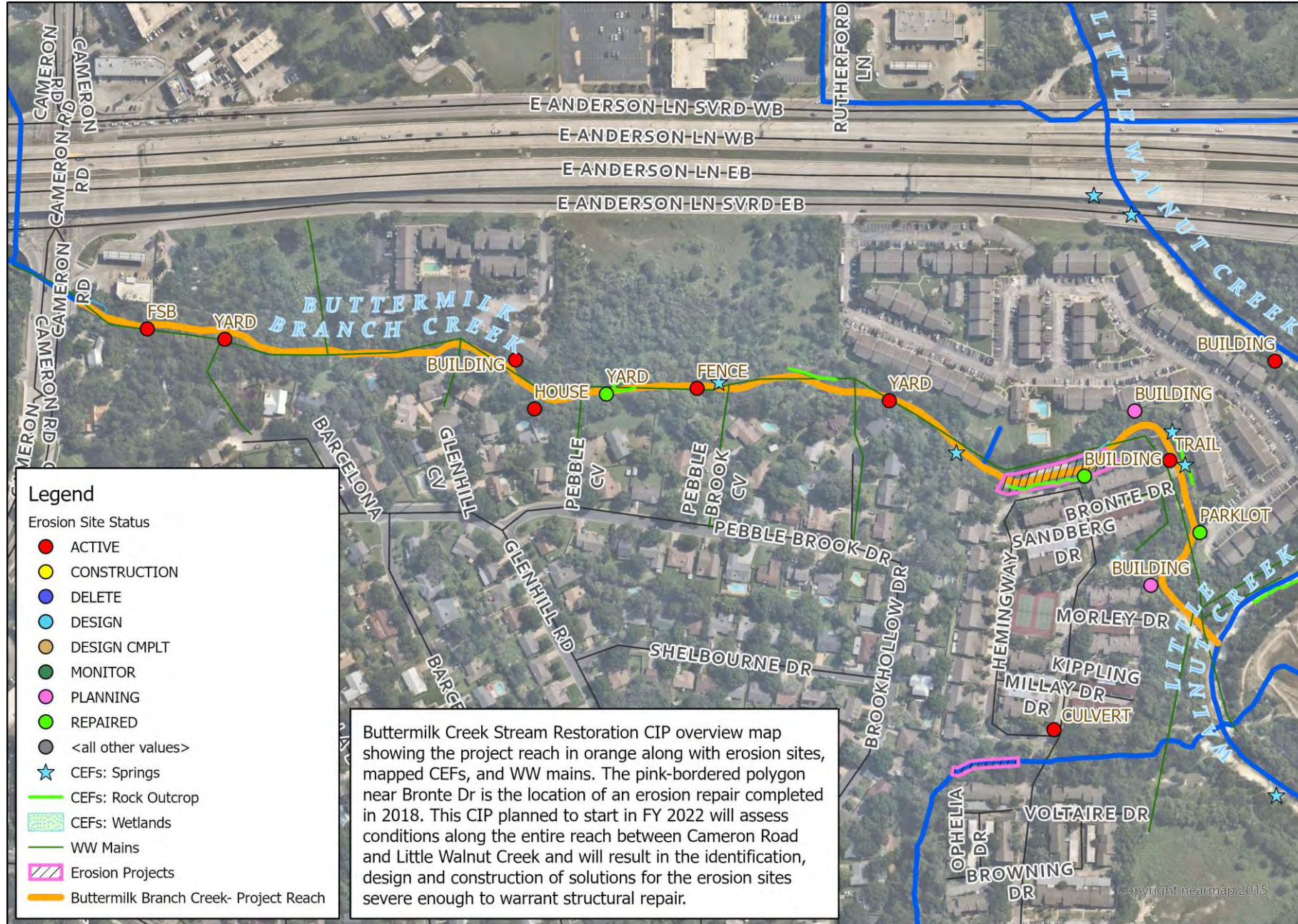
Public Input



Questions and Comments



Location Map



Legend

Erosion Site Status

- ACTIVE
- CONSTRUCTION
- DELETE
- DESIGN
- DESIGN CMPLT
- MONITOR
- PLANNING
- REPAIRED
- <all other values>

★ CEFs: Springs

— CEFs: Rock Outcrop

▨ CEFs: Wetlands

— WW Mains

▨ Erosion Projects

— Buttermilk Branch Creek- Project Reach

Buttermilk Creek Stream Restoration CIP overview map showing the project reach in orange along with erosion sites, mapped CEFs, and WW mains. The pink-bordered polygon near Bronte Dr is the location of an erosion repair completed in 2018. This CIP planned to start in FY 2022 will assess conditions along the entire reach between Cameron Road and Little Walnut Creek and will result in the identification, design and construction of solutions for the erosion sites severe enough to warrant structural repair.



Contact Information



City of Austin Department of Public Works

Minda.Sarmiento@austintexas.gov

512-974-5645

City of Austin Watershed Protection Department

Donald.Heisch@austintexas.gov

512-978-1964