

# Firewise Landscaping

Presented by  
Justice Jones  
Austin Fire Department  
Wildfire Division Manager



Wildland fire emergency ... Why Now ?

Why Texas?

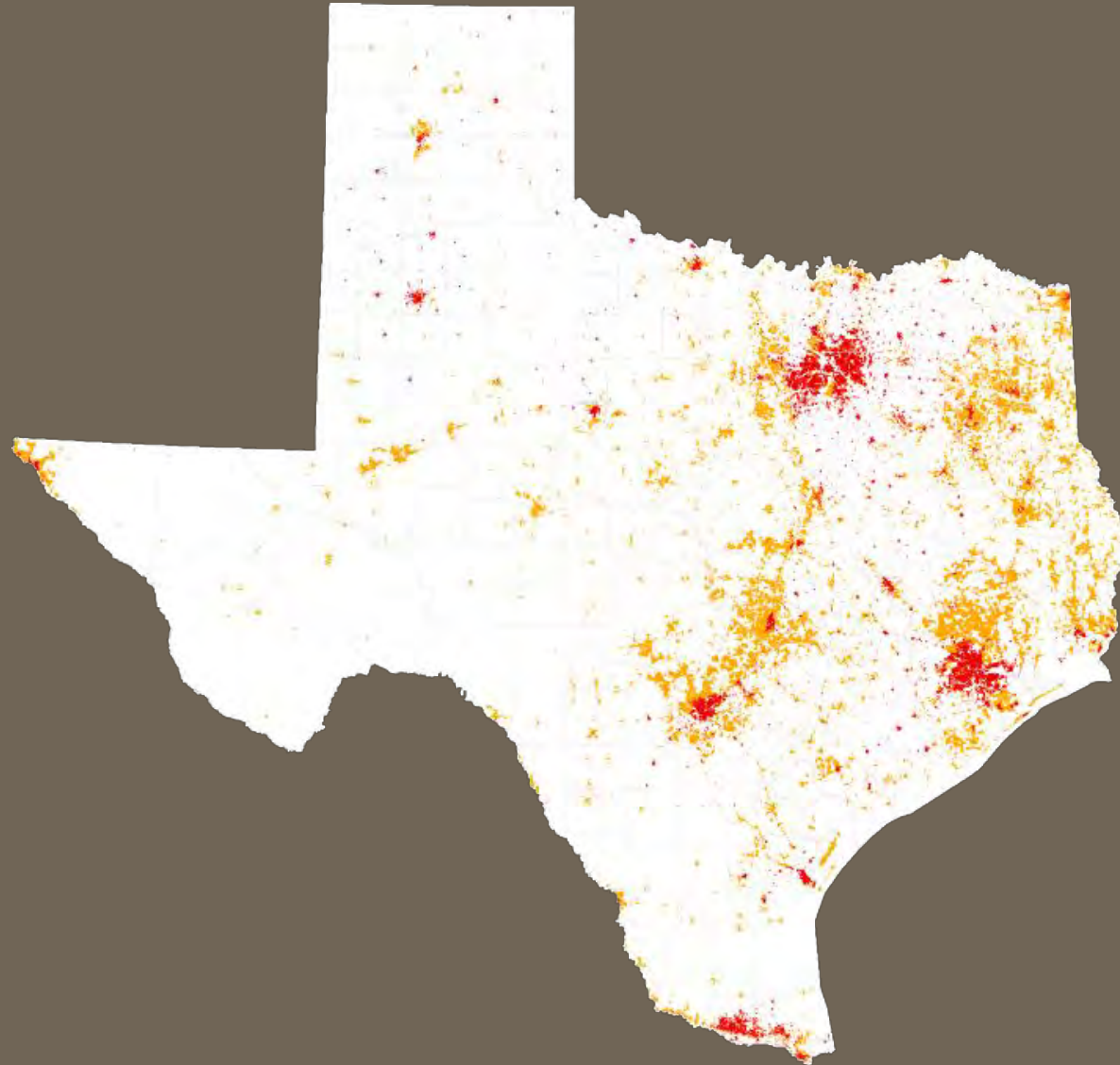
Population

Climate - Weather cycle



Changes in land use - Fuels

# Wildfire is a Rural *AND* Urban issue



- 85% < 2 miles from a community
- 70% caused by individuals

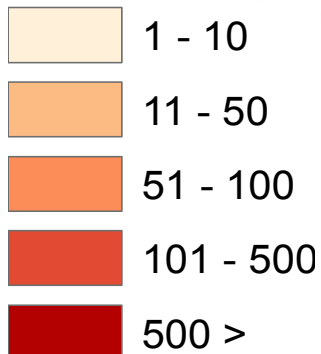


- Land use
- Climate
- Population
- Fire management

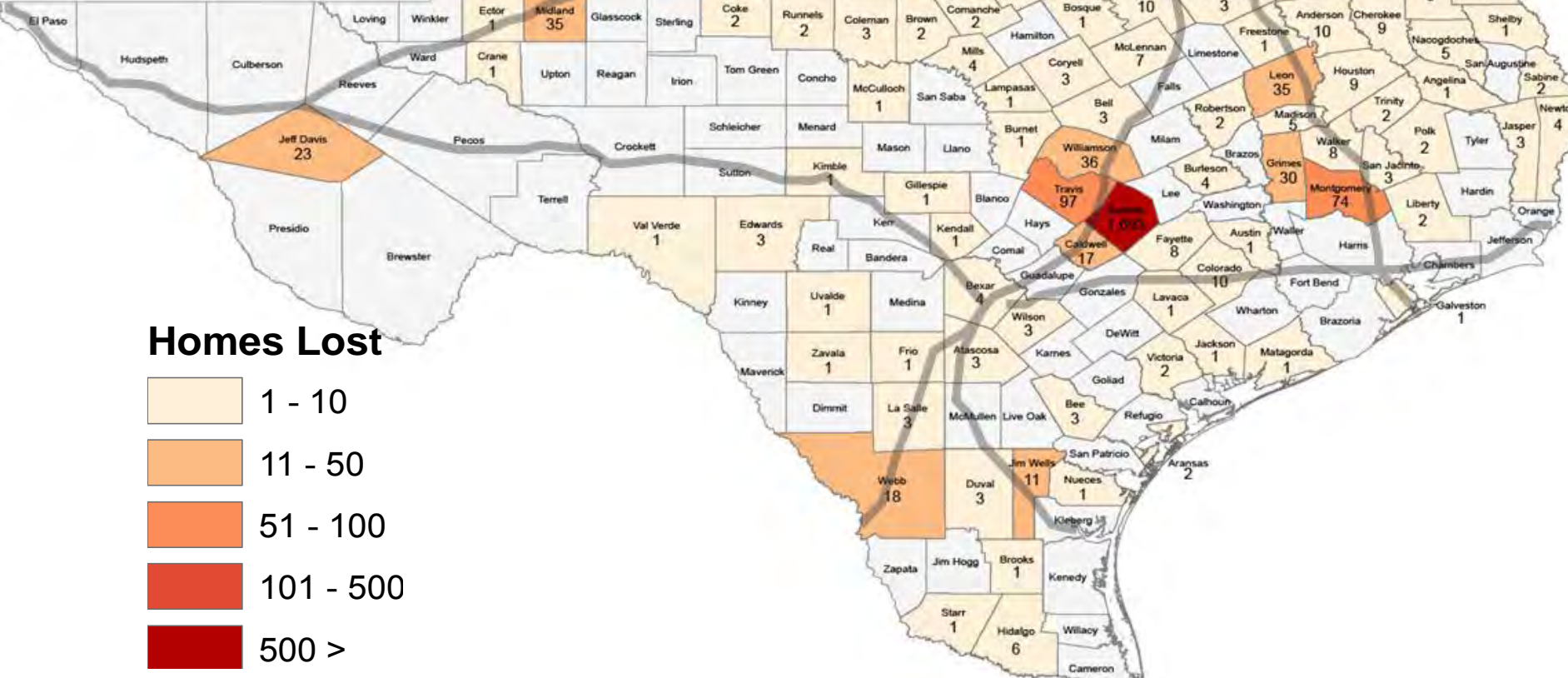
Total Homes Lost:  
**2,947**

Counties Affected:  
**136**

**Homes Lost**



Dallam	1	Sherman	7	Ochiltree	Lipscomb	2				
Hartley		Moore	Hutchinson	Roberts	Hemphill					
Oldham		Potter	14	Carson	1	Gray	Wheeler			
Deaf Smith		Randall	38	Armstrong	1	Donley	14	Collingsworth		
Parmer	Castro	Swisher	1	Briscoe	Hall	Childress				
Bailey	Lamb	Male	Floyd	Motley	2	Cottle	3			
Cochran	Hockley	2	Lubbock	11	Crosby	Dickens	1	King	Knox	
Yoakum	Terry	Lynn	Garza	1	Kent	4	Stonewall	2	Haskell	1
Gaines	Dawson	Borden	Soury	Fisher	Jones	4	Shackelford	1	Stephens	5
Andrews	1	Martin	Howard	8	Mitchell	18	Nolan	9	Taylor	5

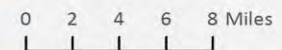




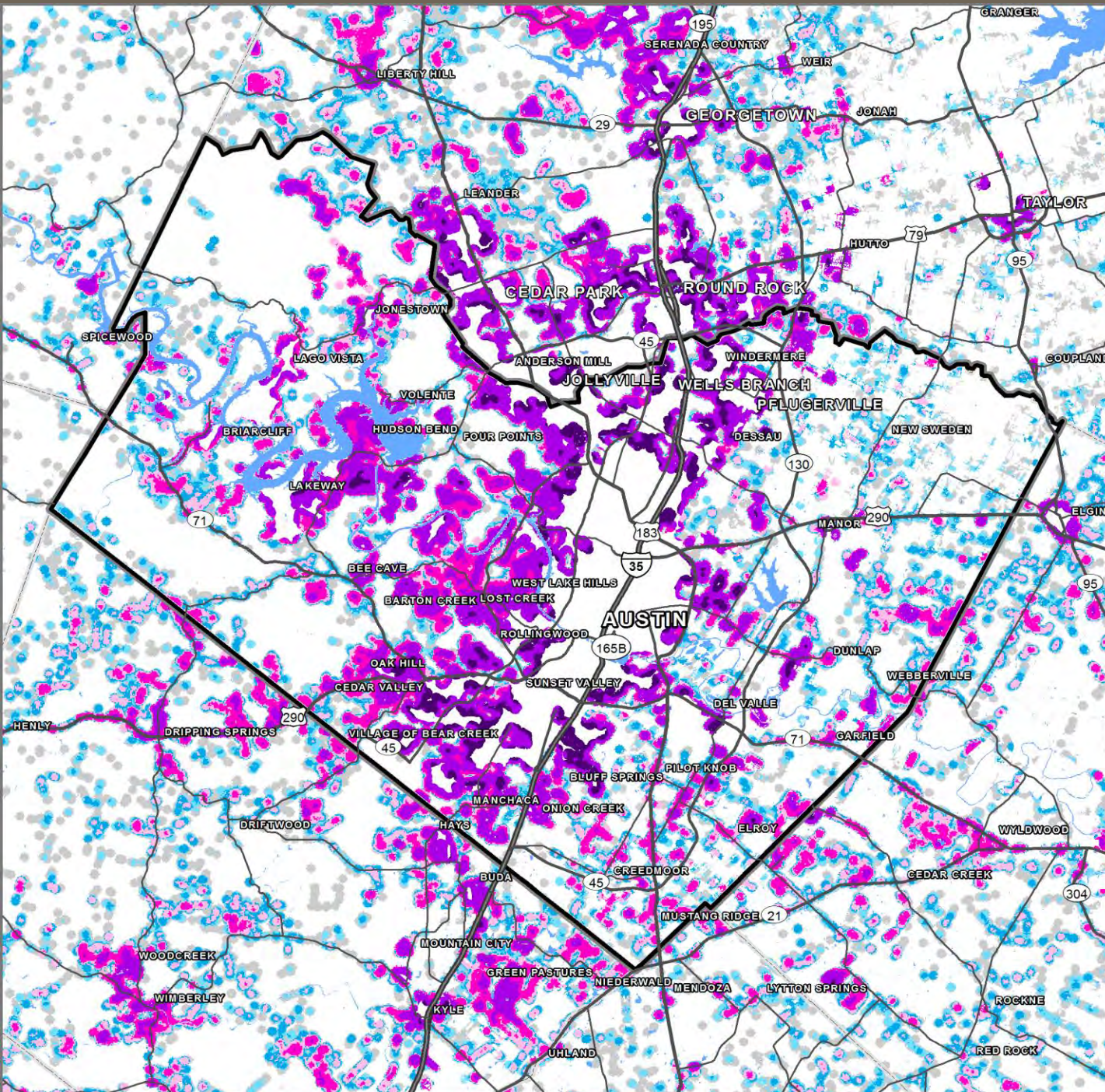
**Wildland Urban Interface**

- 1 - LT 1 hs/40 ac
- 2 - 1 hs/40 to 1 hs/20 ac
- 3 - 1 hs/20 to 1 hs/10 ac
- 4 - 1 hs/10 to 1 hs/5 ac
- 5 - 1 hs/5 to 1 hs/2 ac
- 6 - 1 hs/2 to 3 hs/ac
- 7 - GT 3 hs/ac

Wildfire Risk  
exist  
throughout  
Travis County.



Date: 4/28/2014





# What's at Stake

You live in a downtown Austin high-rise: you have a stake in the fight against wildfire if you enjoy our area parks.



You live next to a suburban greenbelt you have a stake in the fight against wildfire to protect your home and the landscape.



You live on rural acreage in Travis County: you have a stake in the fighting wild to preserve your land and our Texas heritage





*Wildfire is everyone's fight*

*so Know your role*

It's not a matter of if the next wildfire  
will occur...but when.

Wildfire will happen

# Fire Adapted Ecosystem =

- **Fire-adapted community:**

*“A community of informed and prepared citizens that collaboratively take action to safely co-exist with wildland fire”*





# Firewise Principles and Environmental BMPs

Working Together

Firewise  
Principles

**A  
Resilient,  
Healthy  
Landscape**

Environmental  
Stewardship



# CommuniSurvivability Model

*Engineer for  
Survivability  
Harden the structure*

*Fuel Mitigation*

*Modify Behavior (Individual and  
Community)*

# Why Homes Burn

- Ember
- Combustible attachments
- Windows
- Structure to Structure
- Landscape elements



# Stranger than Fiction



# Myth # 1

It takes a big fire to cause major losses.

# Pinnacle Fire

- Acres Burned 100
- Homes Lost 10
- Homes Damaged 12





# Steiner Ranch

**Acres Burned: 125**  
**23 homes lost**



# Moonglow Fire

**Acres Burned: 84**  
**Homes Lost: 16**



# SMALL FIRES = BIG LOSS

## Fact #1





## Myth #2

My trees are out to get me.





# Steiner Ranch



## Fact #2

Homes burn trees too



# Fact-Residential Trees need protection from wildfire too.



# Myth #3

The Wolf cant blow my house down I built it with brick.

# Fact #3

Embers are a wolf in sheep's clothing



# EMBERS

Wildfires driven by high winds sent a profuse amount of embers ahead of the main fire.















# ATTACHMENTS

Combustible attachments to homes act as a fuse.



# Wicking Fences





Windows not designed to withstand heat fractured, creating an opportunity for flames and embers to penetrate homes.



Fires often spread to surrounding homes from vehicles, outbuildings, firewood and other combustible items that already had caught fire and were generating a tremendous amount of heat.



# Myth #4

Fire is an all consuming “Wall of Fire”













# Fact # 4

Fires can only burn what is combustible and in their path





Backing fire ignited this home



# Myth #5

Homes with Moonscaping are guaranteed to survive







13158  
STATE FARM  
CONNELL



# Fact #5

Fire will find the weak link and follow that link until the chain of combustion is broken



# Bastrop Fire

Acres Burned:  
34,068

Homes Lost: 1645

Fatalities: 2

Over 600 homes were  
destroyed within the first 2

1\2 hours

1000 burned the first day



Of the 2,853 total structures within the Bastrop fire perimeter, 1,157 survived,



Many without the aid of suppression



# Effective Defensible Space



Earlier this year



After the fire

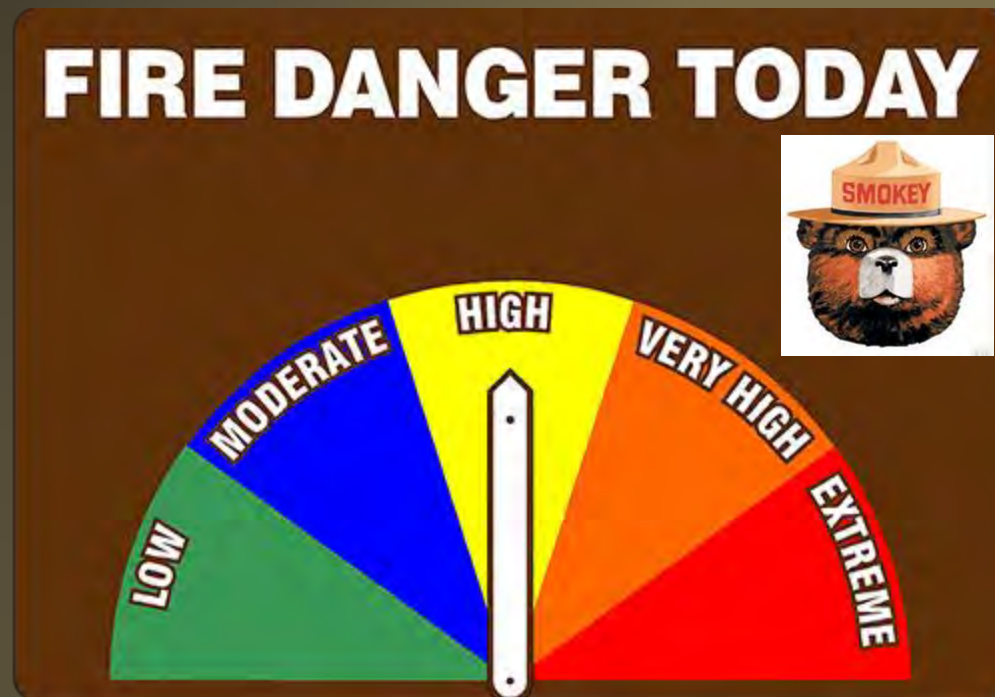


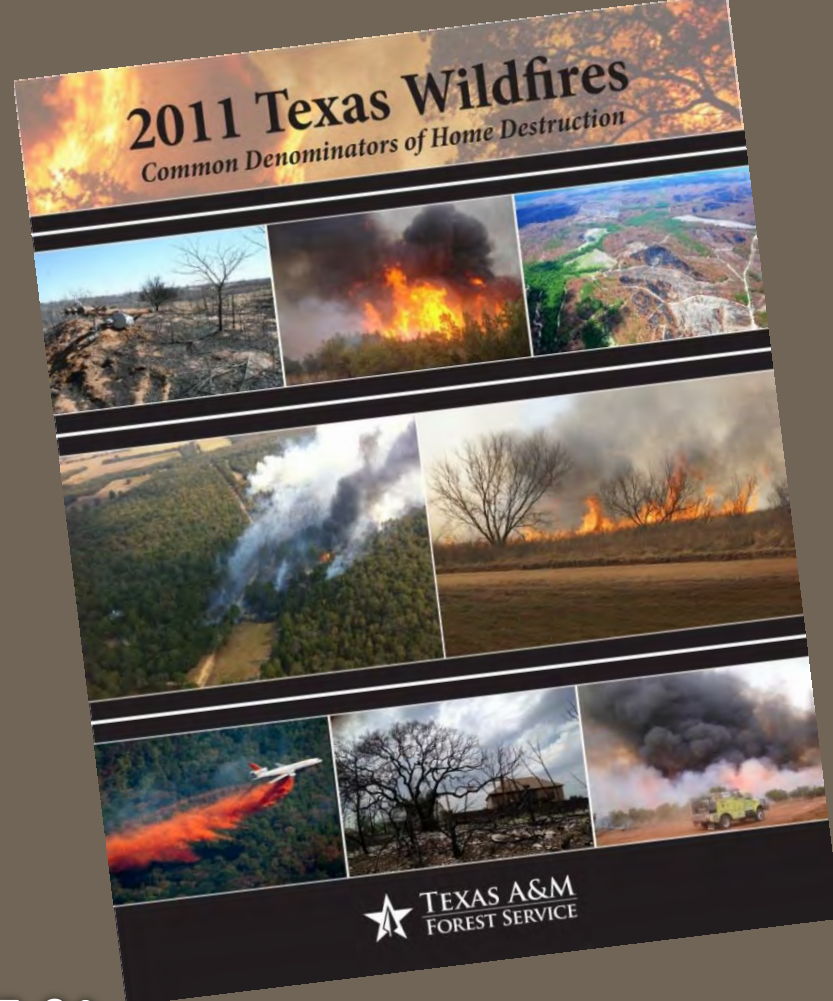
# Common Denominators of Home ignition

1. Embers are the main reason homes ignite!
2. Direct flame impingement and radiation to combustible attachments.
3. Windows- non tempered, single pane, wooden or vinyl panes.
4. Landscape to Structure- minimal fuels, low intensity, backing fires.
5. Secondary Fuel Sources- firewood, door mats, patio furniture.
6. Structure to Structure - (auto exposure) inadequate setbacks expose homes to high heat and ember production.

# National Fire Danger System

- First County in Texas to adopt the National Fire Danger Rating System (NFDRS)



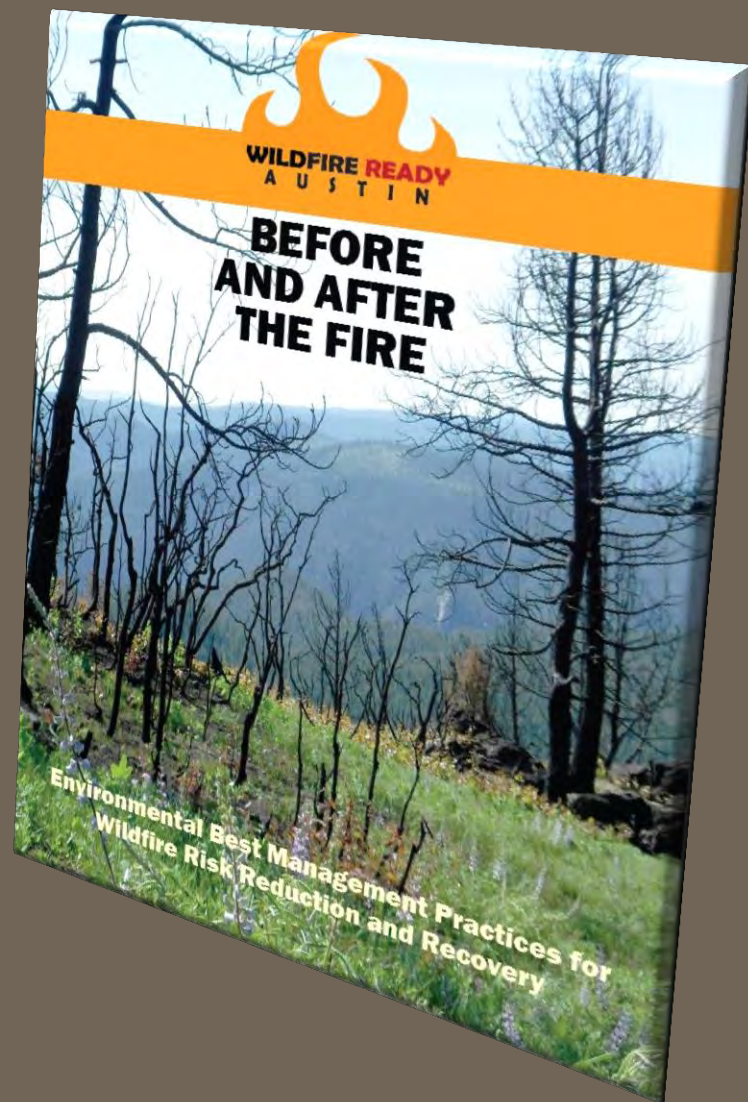


# 2011 Texas Wildfires

Common Denominators of Home Destruction



# Development of Environmental BMPs



Presented by  
Justice Jones  
Austin Fire Department  
Wildfire Mitigation Division  
Fire Adapted Communities  
Coordinator

