

# Drainage Utility Fee & Stormwater Management Discount Program

## Landscape Professional Training

*January 24, 2019*



**RAINWATER HARVESTING  
SYSTEM**



**RAIN GARDEN**



**GREEN ROOF**



**STORMWATER POND**

# Presentation Outline

1. Background
2. Program Overview
3. Q&A



Rain Garden



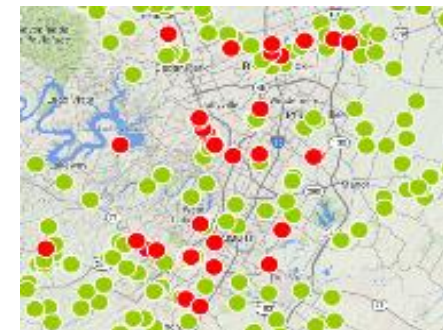
Rain Tanks



Stormwater Pond

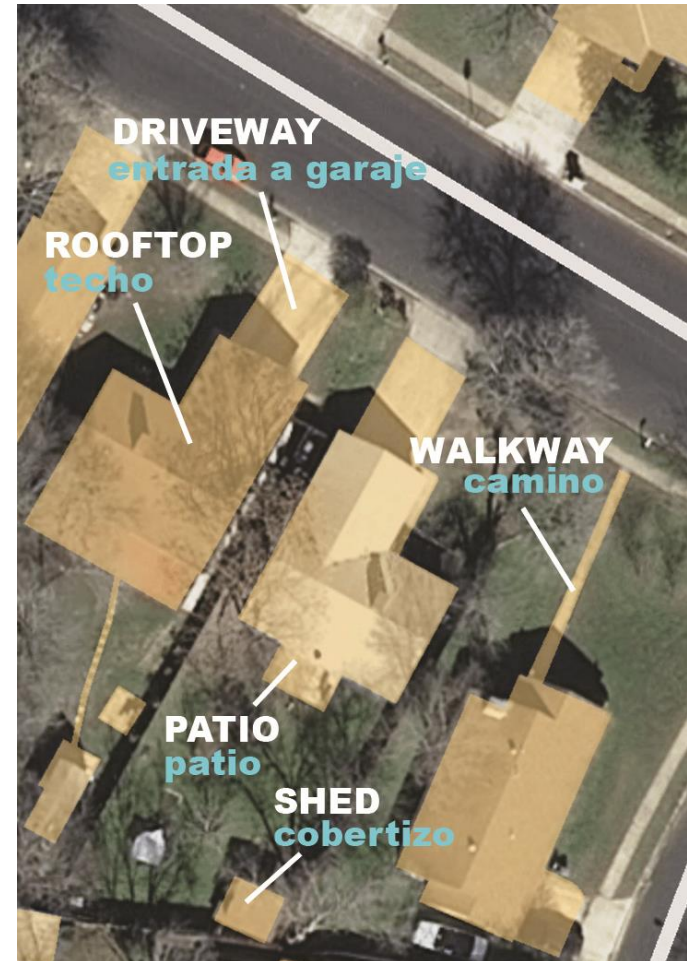
# Background – Drainage Charge

- **Dedicated source of funding for the 3 critical mission areas for Watershed Protection**
  - Flooding
  - Erosion
  - Water Pollution
- **Approximately 95 % of total budget of approximately \$93 million comes from drainage charge**
- **Program Areas Funded**
  - Flood Risk Reduction
  - Infrastructure and Waterway Maintenance
  - Stream Restoration
  - Watershed Policy and Planning
  - Water Quality Protection
  - Cash funding towards Capital projects



# Background – Drainage Charge

- **New Charge Implemented in Oct. 2015**
  - Based on amount and percent of impervious cover
  - Apply to entire property, not units on property
  - Calculated same way for all properties
- **Drainage Charge Formula**
  - Drainage Charge = Base Rate x Impervious Cover x Adjustment Factor





# Background – Why a Discount?

- **Recognize reduction in drainage impact**
  - Storing stormwater on your property can reduce the impact of impervious cover
- **Provide a way to reduce your bill**
  - Customers have options to reduce their other utility bills
- **Reduce damaging effect of stormwater**
  - While impact reduction per property may be relatively small, it can have a cumulative effect



# Program Overview - Eligibility

- **What's eligible**
  - Tanks
  - Rain Gardens
  - Detention, Water Quality, and Retention/Irrigation Systems
  - Green Roofs





# Program Overview

Water Quality Pond



Detention Pond



Retention/Irrigation Pond



Green Roof

# Program Overview- Amount of Discount

## The discount varies, based on:

- Volume of stormwater control measure
- Amount of impervious cover on property
- Percent of impervious cover on property
- Amount of impervious cover feeding the stormwater control measure

## STORMWATER CONTROL MEASURE

## TYPICAL DISCOUNT RANGE\*

55 gallon tank

\$0.20 to \$0.30 per month

Small rain garden (60 sq ft., 6 inches deep)

\$0.70 to \$1.20 per month

1,000 gallon tank

\$2.90 to \$4.90 per month

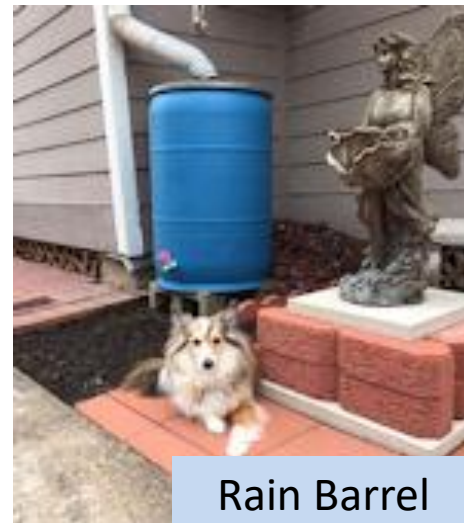
Actual discount will vary depending on the amount and percent of impervious cover on a property. The low end of the range is based on a property with 2,000 square feet and 30% impervious cover. The high end is based on a property with 5,000 square feet and 50% impervious cover.



# Program Overview

- Applicants must be a current drainage utility customer or a tenant of the benefitted property.
- Discount available only for stormwater control measures that exceed the development requirements.
- Customers may be able to mitigate up to 50% of impervious cover on the property.

Rain Garden



Rain Barrel

# Program Overview – How to Apply

Applications can be submitted online or mailed and should include:

- Customer Information
- Stormwater Control Measure Information
  - Type
  - Volume
  - Area That Feeds It
  - Image

CITY OF AUSTIN  
STORMWATER MANAGEMENT DISCOUNT  
Application Form

**APPLICANT INFORMATION** Account Number (if known): \_\_\_\_\_

Last name: \_\_\_\_\_ First name: \_\_\_\_\_

Telephone: \_\_\_\_\_ Email: \_\_\_\_\_

**SITE INFORMATION**

Address where SCM is physically located:

Street: \_\_\_\_\_, Austin, TX, Zip: \_\_\_\_\_

Address where drainage charge is billed, if different. Please include account info if known.  
(Example: Homeowners association pays drainage charge but homeowner has a rain barrel)  
(Example: Property manager pays the drainage charge but tenant has a rain garden)

Street: \_\_\_\_\_, Austin, TX, Zip: \_\_\_\_\_

Account Name: \_\_\_\_\_ Account Number: \_\_\_\_\_

**STORMWATER CONTROL MEASURE (SCM) DETAILS**

Is this application for a new discount, or a renewal/transfer of an existing discount?

NEW  RENEWAL  TRANSFER

If renewal or transfer, have there been any changes to the original SCMs that were approved for a discount?  
Please provide information in the space below





# Program Overview - Maintenance

- **Inspection and Maintenance**
  - Customers receiving discount must service and maintain stormwater control measure in order to retain discount.
- **Timeline**
  - Discount is valid for two years starting on date of approval. To renew discount, customer must complete renewal process.



Clogged Rain Barrel



Debris in Pond



Sediment in Rain Garden

# Program Highlights

- Acknowledge & incentivize voluntary initiatives
- Discounts varies by size of control and existing impervious cover on property
- Tailored application level of effort to discount amounts
  - Fairly quick to complete smaller/residential applications
  - Larger/commercial controls may take a little longer, but still straightforward and just enough to verify application
- *Disclaimer: Impervious cover on property will be subject to correction when reviewing the application, which may result in an increase or decrease to the charge.*



# Questions?

Kellsey Schilly

*Kellsey.Schilly@austintexas.gov*

*(512) 974-9732*

*[austintexas.gov/Drainagecharge](http://austintexas.gov/Drainagecharge)*