

Planning for the Future: Sustainable Landscaping

Denise Delaney

Grow Green Landscape Professional Training
Lady Bird Johnson Wildflower Center
February 7, 2019



Sustainable Landscaping



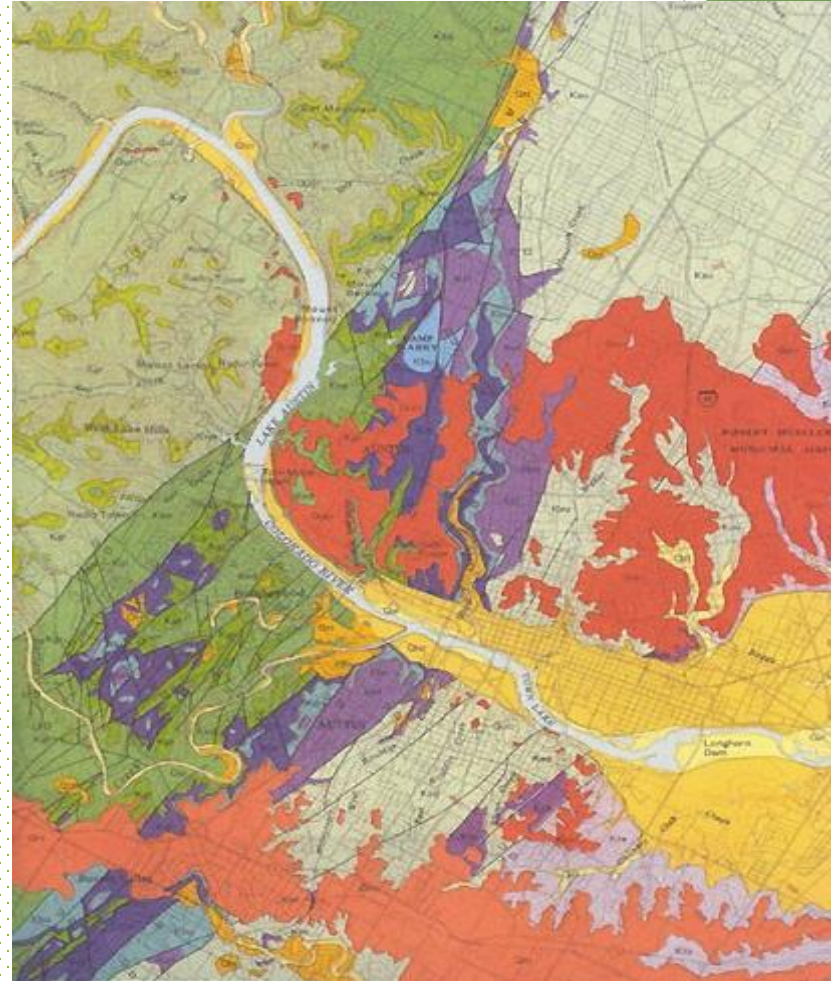
Also known as:

- Xeriscape
- Nativescape
- Waterwise
- Wildscape
- Smartscape
- Earth-wise

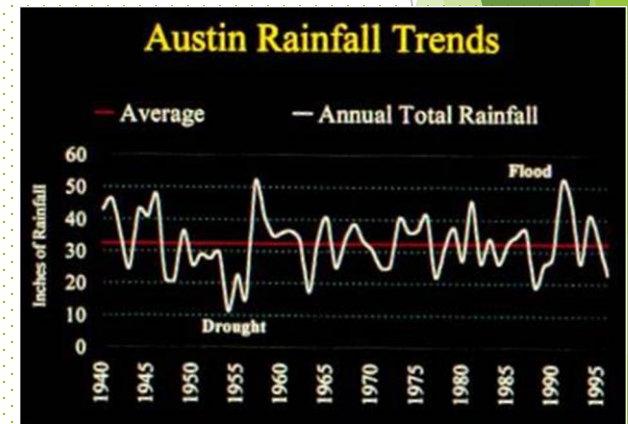
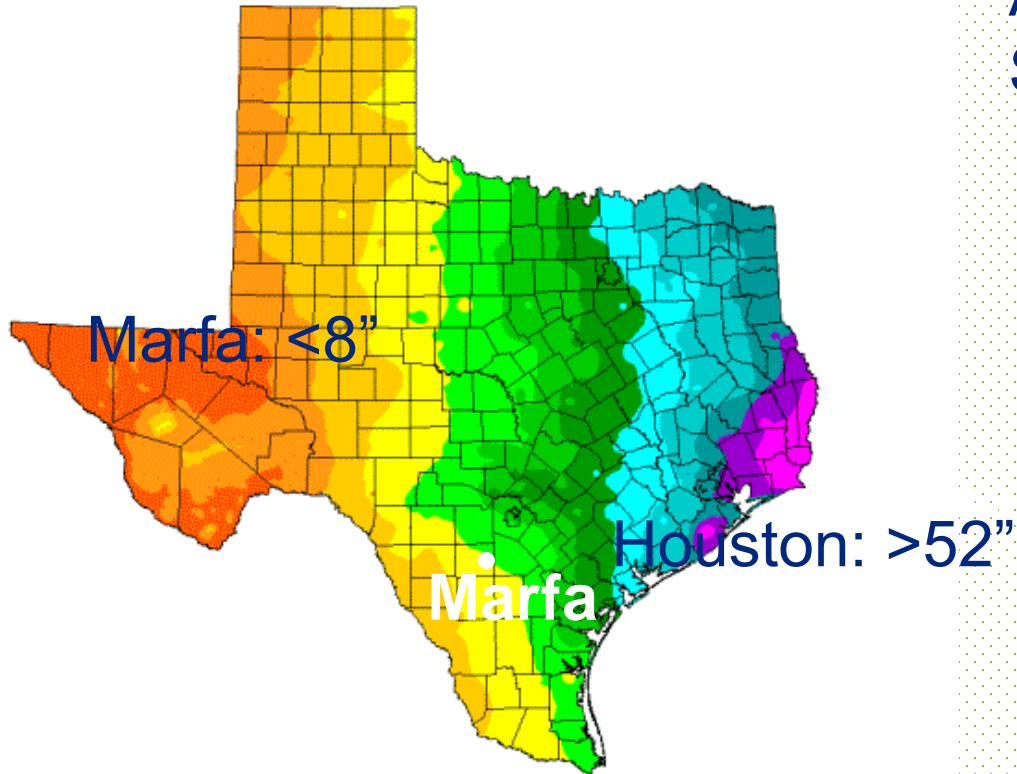


Environmental Challenges

- **Rainfall**
- **Temperatures**
- **Soil**
- **Urban Heat Island**
- **Impervious Cover**
- **Water Quality**



Rainfall Amount & Pattern



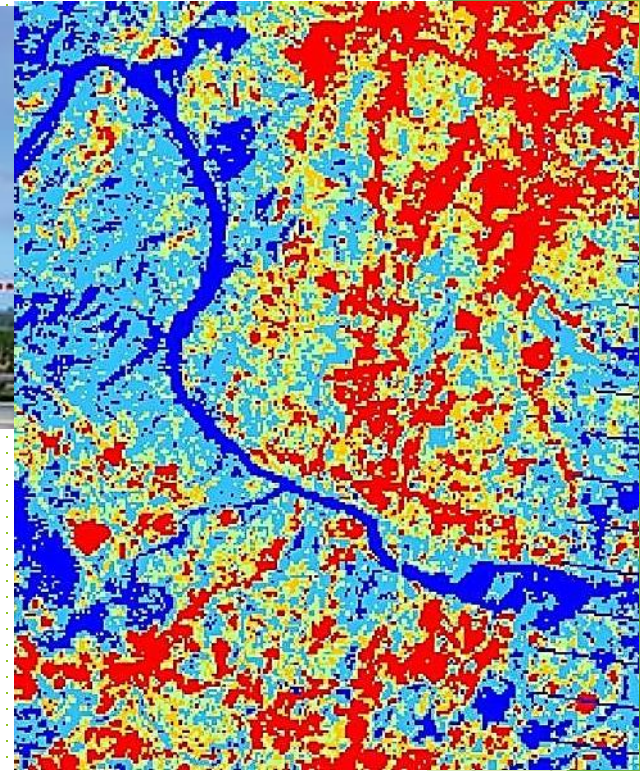
Soil



Austin area soils are notorious for being shallow, poor, and hard to manage.



Urban Heat Island



More hard surfaces and less vegetation keep cities in the **RED**



Impervious Cover



Water Quality



Storm water erosion damage
and run off pollutants



Solutions

- Develop Good Designs
- Keep Water on the Land
- Rainwater Harvesting
- Consider Soil Options
- Use the Right Plant in the Right Place
- Create Cool Spaces
- Reduce Lawn Areas
- Practice Responsible Turf Care
- Avoid Weed and Feed
- Plant & Care for Trees
- Conserve Water
- Follow Integrated Pest Management
- Design wildlife habitats
- Support a Healthy Food Supply



Develop Good Designs

- Site and soil conditions
- Extended living area
- Cost: initial and maintenance
- Time commitment
- Resources

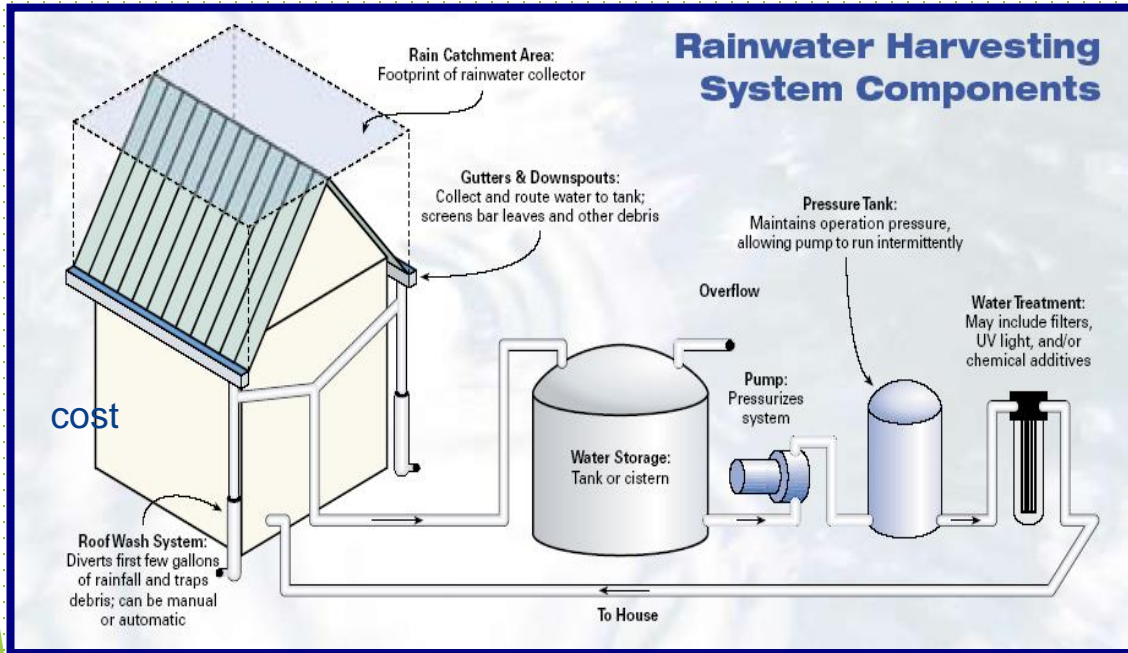


Keep Water on the Land

Includes rain gardens, berms, terraces, swales, & porous pavement



Rainwater Harvesting



Consider Soil Options

1

Work with what
you have



2

Amend existing soil



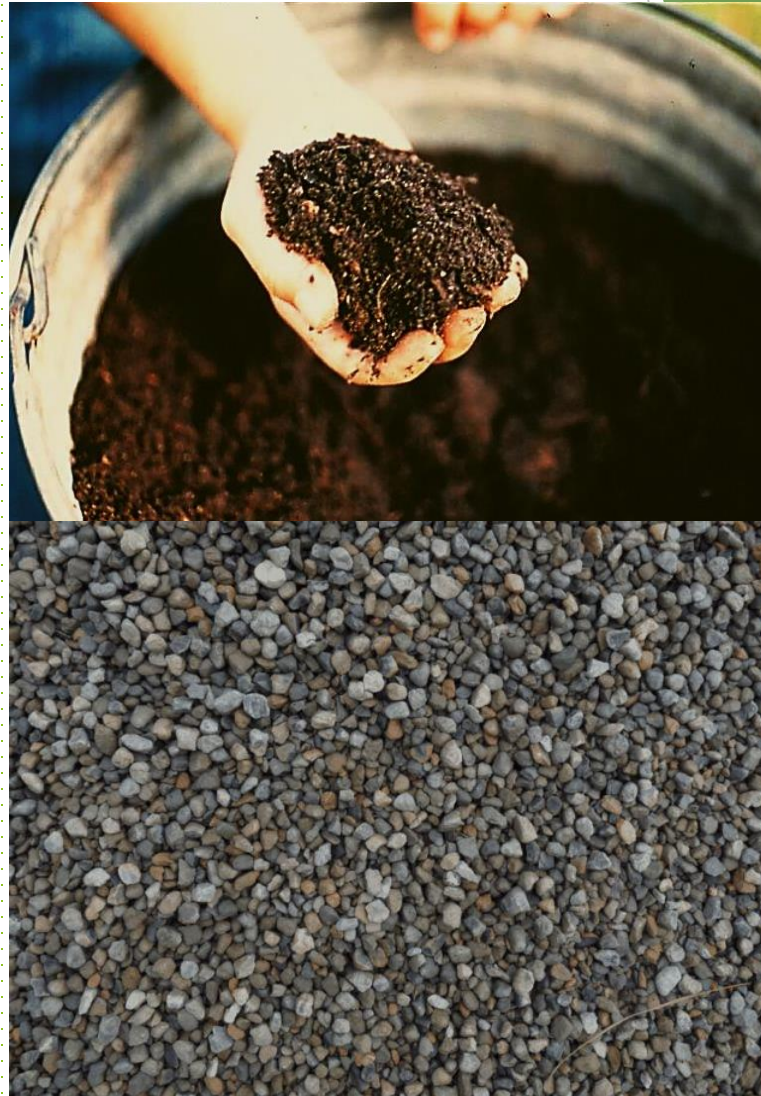
3

Use raised beds



Soil Additives

- ▶ **Composted Organic Matter**
 - ▶ Helps sandy soil hold moisture and nutrients
 - ▶ Helps clay soils drain better and be aerated
- ▶ **Expanded Shale**
 - ▶ Improves drainage
 - ▶ Does not break down



Use the Right Plant in the Right Place



Native and Adapted

Landscape Plants



Find your perfect plant with our online search tool!



an earthwise guide for Central Texas

Texas AgrLife Extension ★ City of Austin



Create Cool Spaces



▶ Green Strategies

- ▶ Trees and plants
- ▶ Green roof
- ▶ Green walls

▶ Light Strategies

- ▶ Reflective roofs
- ▶ Permeable pavement
- ▶ Shade structures



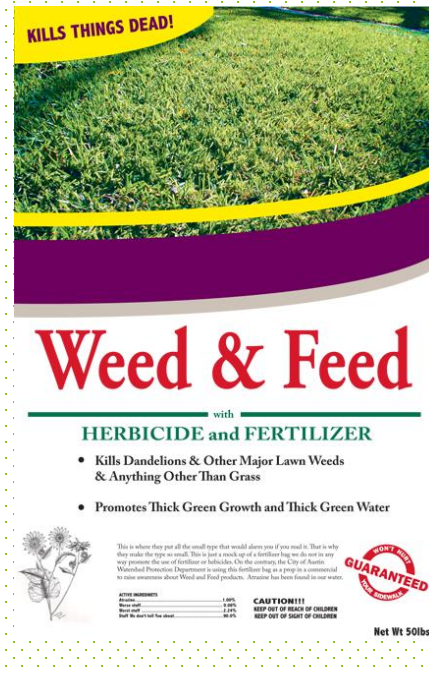
Responsible Turf Care

- ▶ Consider reducing turf areas
- ▶ Aerate and topdress lawns with compost instead of fertilizing
- ▶ If fertilizing do so when turf is actively growing
- ▶ Use slow-release, organic fertilizers
- ▶ Do not fertilize right before a rain



Avoid Weed & Feed

- ▶ Timing of these combined ingredients is not compatible
- ▶ Chemicals can be tracking into the house on shoes, hands, or paws
- ▶ Active ingredients can harm trees and shrubs
- ▶ Excess nutrients and active ingredients enter our waterways
- ▶ Best weed defense is a healthy lawn



Tree Benefits

- Offer greater comfort and energy-savings
- Increase home value
- Reduce air pollution
- Reduce noise pollution
- Improve neighbor relations

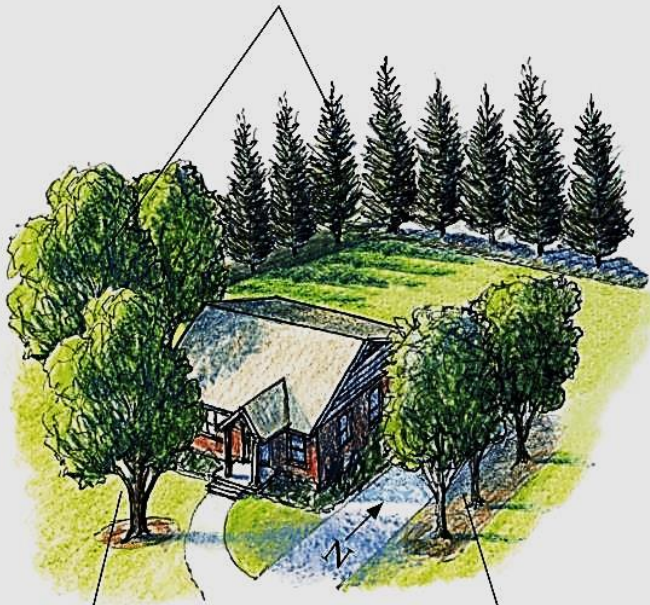


5% - 20% more valuable



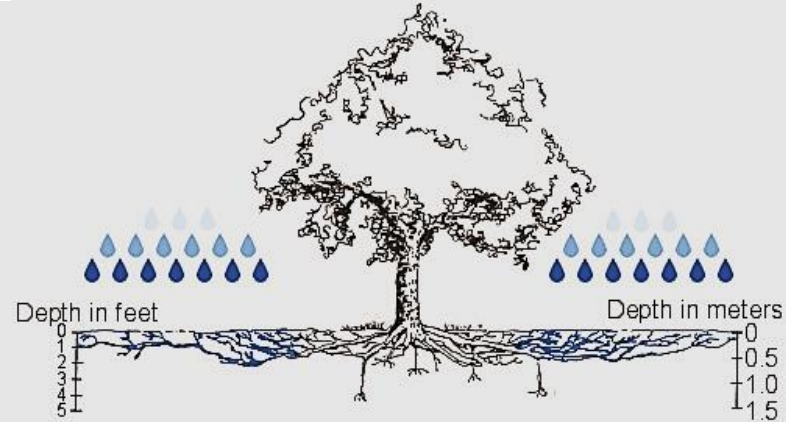
Plant and Protect Trees

Plant windbreak conifer trees on the west and northwest to provide mid-to-late afternoon shade in most locations. In winter these windbreak trees protect your home from cold north winds.



Shade east and west windows with deciduous trees, but prune lower branches to prevent blocking the view. In winter, after leaf fall, warming sunlight comes through.

Plant shade trees over patios, driveways, and air conditioning units to cool areas around your home.



Water Conservation Information

(512) 974-2199

www.austinwaterwise.org

Information on the landscape rebate program, irrigation audits, variances, finding a City certified licensed irrigator and other water conservation tips

grow green earth-wise guide to **Irrigation**

do you need an irrigation system?

Although an automatic irrigation system may seem easier than dragging water hoses around the yard, you should spend some time evaluating your needs and learning about your options.

Consider the following:

- Most watering offers
- An efficient and well-maintained system offers the risk of water
- An opportunity to observe any problems in the landscape early on
- For added convenience, water hoses and sprinklers can be placed on a timer. A well-designed and properly managed system can be very convenient, but
- May be expensive to install and maintain
- Typically increases monthly water usage

Irrigation Evaluation

Austin Water offers irrigation evaluations for residential and commercial customers. During the evaluation a licensed irrigator will provide an overview of how your system is performing and make recommendations for scheduling changes and equipment upgrades. The evaluation covers:

- Controller settings check
- System component inspection for problems
- Leak identification
- Recommended flow rates and sizes for well water
- Suggestions for improvement

To schedule an audit, call Austin Water at (512) 974-2199 or schedule online at www.austinwaterwise.org

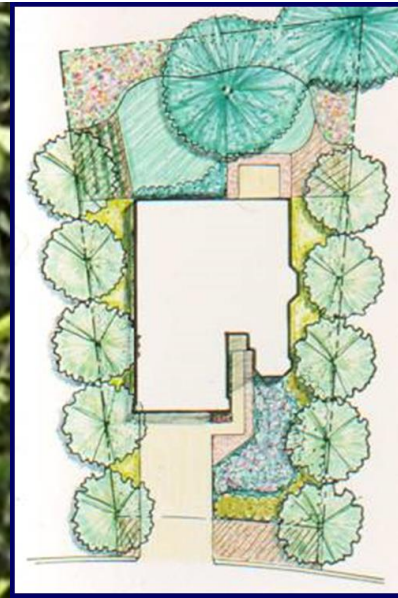
Recommendations

Flow Rate	Flow Rate (gpm/ft)	Flow Rate (gpm/ft)
1/2" Drip	1.0 gpm/ft	1.0 gpm/ft
3/4" Drip	1.5 gpm/ft	1.5 gpm/ft
1" Drip	2.0 gpm/ft	2.0 gpm/ft

Regulation Flow Rates

Flow Rate	Flow Rate (gpm/ft)	Flow Rate (gpm/ft)
1/2" Drip	1.0 gpm/ft	1.0 gpm/ft
3/4" Drip	1.5 gpm/ft	1.5 gpm/ft
1" Drip	2.0 gpm/ft	2.0 gpm/ft

* Available only for 1" or larger diameter mainline pipe. Flow rates may vary due to pipe size and other factors. See website for additional information.

Support Wildlife Habitats



Food, water, safe shelter,
place to raise young

www.keepaustinwild.com

Federal, state, and local programs

www.nwf.org/gardenforwildlife



Healthy Food and Water Supply



Organic Food

<http://www.austintexas.gov/departmentsustainable-urban-agriculture>

Questions? THANK YOU!

Speaker Contact Information

Denise Delaney

(512) 974-2581

Denise.Delaney@austintexas.gov

