



Water Conservation Landscape Programs

November 18, 2020

Christopher Charles – Conservation Program Specialist



Conservation Stage Water Restrictions

Austin WATER CONSERVATION STAGE

RESIDENTIAL

- AUTOMATIC IRRIGATION**
Even Address: **Thursday**
Odd Address: **Wednesday**
- HOSE-END SPRINKLERS**
Even Address: **Thurs, Sun**
Odd Address: **Wed, Sat**
- HOURS**
Midnight - 10 AM
7 PM - Midnight

Home Car Wash Allowed with Bucket or Auto Shut-Off Hose

Tree Bubblers, Hand-Held Hose, Drip Irrigation: Any Day/Time

Austin WATER CONSERVATION STAGE

**COMMERCIAL/
MULTI-FAMILY**

- AUTOMATIC IRRIGATION**
Even Address: **Tuesday**
Odd Address: **Friday**
- HOURS**
Midnight - 10 AM
7 PM - Midnight

Tree Bubblers, Hand-Held Hose, Drip Irrigation: Any Day/Time

Schools on Mondays

Way to Conserve Water in the Landscape

- Use more rainwater
- Design a WaterWise landscape
- Maintain your landscape
- Maintain your irrigation system



Rainwater Harvesting

Residential and Commercial



Rainwater Harvesting Rebate Program

- Austin Water offers a financial incentive to encourage rainwater harvesting for non-potable uses.
- Rebate amount: (**Not to exceed 50% of the system cost**)
 - .50 / gal. for non-pressurized systems. (rainbarrels and cisterns)
 - 1.00 /gal for pressurized systems (cisterns with a pump)
 - \$5000 max rebate
- Rainbarrels 500 gallons and less.
 - May install after purchase but must submit application and receipts within 30 days of purchase
- Systems over 500 gallons.
 - A site drawing, a system drawing, photos of the proposed location, and operation/maintenance guide must be included with the application before installation.
- May apply once a year

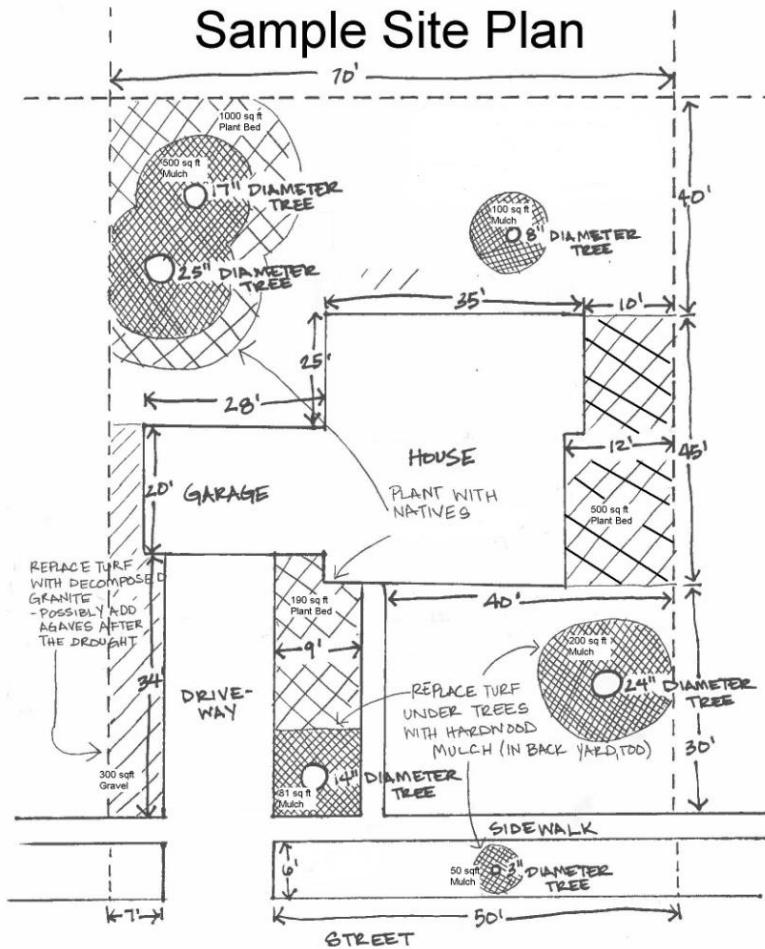
WaterWise Landscape Rebate Program

Residential and Multi-Family Condominiums



- We are giving an incentive to take out your healthy turf grass and replace it with native plant beds
- \$35 for every 100 sq.ft. that is converted.
(min 500 sq.ft. – max 5000 sq.ft.)
- No turf to turf replacement, must be native plant bed and/or mulched hardscape
- No artificial turf or gravelscapes (Zeroscaping)

Eligibility



*NOT TO SCALE

- Austin water residential customer or qualifying water provider
- Size of conversion area (**500sqft min**)
- Have not started work on the conversion (must be accepted into the program first)
- Health of current turf grass must be 75% or better



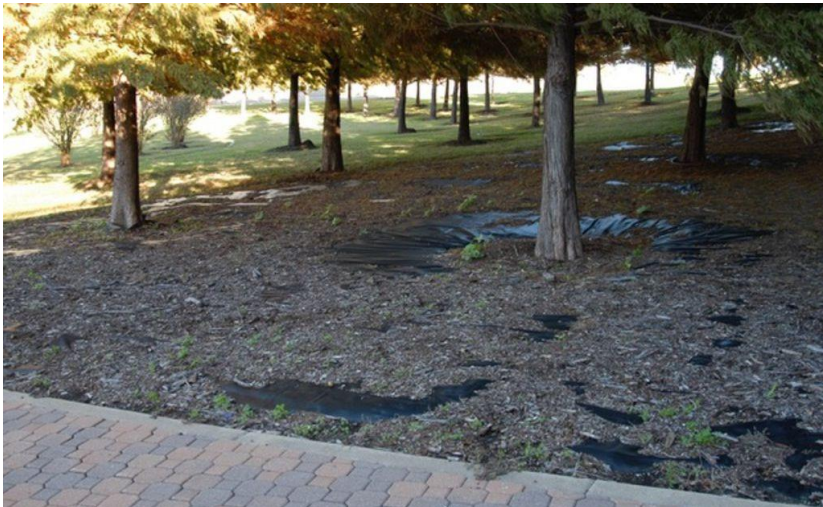
Program Requirements

- Plants from the Grow Green plant guide
- Existing sprinkler systems must be capped off or converted to drip or low use bubblers in the conversion area.
- Plant beds and mulch hardscape must have 2-3” of hardwood mulch
- Conversion area must comprise of over 50% plant cover at maturity
- No gravel paths greater than 3 feet in width



Recent changes

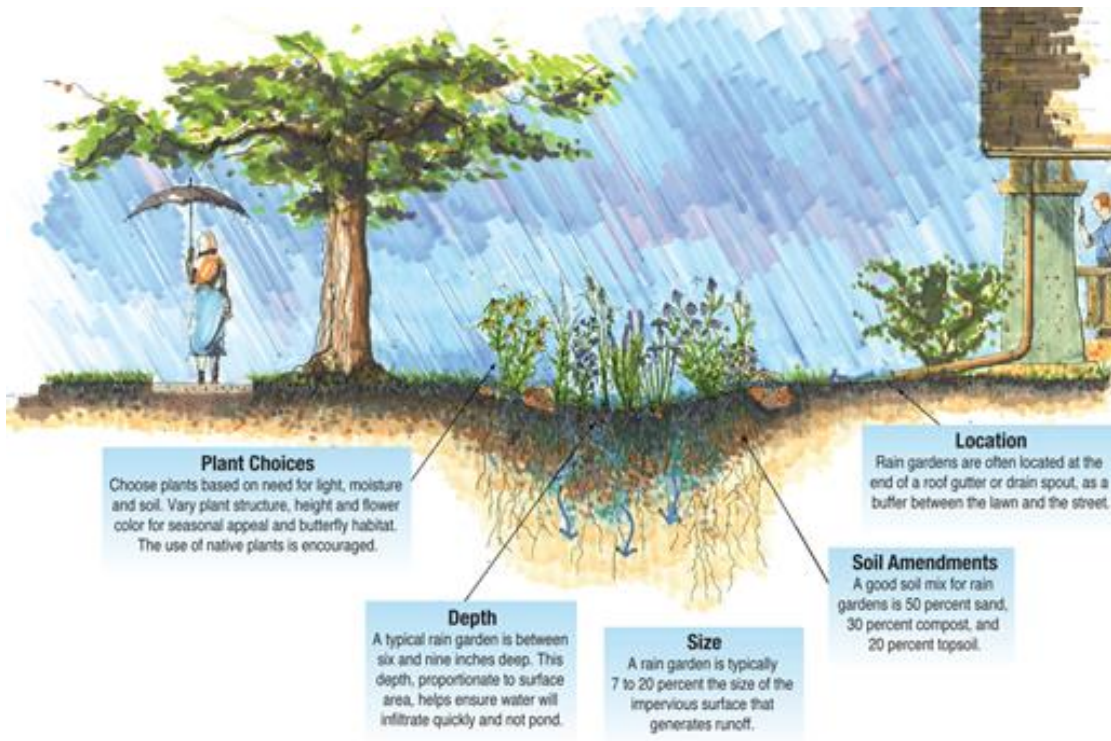
- No landscape fabric required
- No compost required
- No new automatic sprinkler systems
- Gravel patio area can be included (200 sqft max)



WaterWise Rainscape Rebate Program

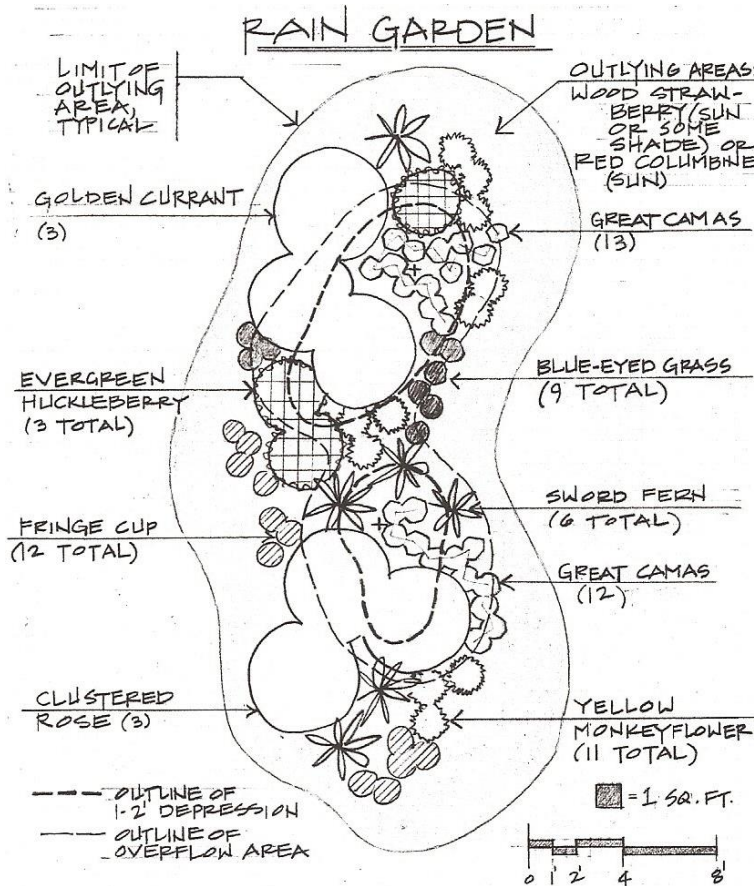
Residential and Schools

- Homeowners and schools may receive up to \$500 (\$0.30/sq. foot -- 100 sq. foot min.) for installing landscape features such as rain gardens, berms, swales, terraces, and porous pavement that direct and retain rainwater on the property



Eligibility

- Austin water customer or qualifying water provider
- Size of conversion area (**100sqft min**)
- Have not started work on the conversion (must be accepted into the program first)



Raingardens



Berms



Swales



Rainwater Terracing



Porous Pavement



Landscape Survival Tools for Your Yard

This rebate program designed to keep your yard healthy while still saving water. By using a combination of mulch, compost, and aerating your lawn, you will ensure that water stays on your yard, reducing the need for supplemental irrigation.

*** NOW YEAR-ROUND!!!**



How it works



- You buy the landscape survival tools over or at the minimal amounts.
- Keep the receipts.
- Install the drought survival tools for your yard.
- Take photos of the completed work.
- Turn in application, receipts and photos.

Minimum amounts for flat rebate



- Compost – 2 cubic yards or 54 cubic feet
 - Rebate \$50



- Mulch – 2 cubic yards or 54 cubic feet
 - Rebate \$40



- Aeration service for entire front and/or back lawn area (equipment rental is acceptable)
 - Rebate \$30

Irrigation Upgrade Program - Upgraded

Residential and Commercial

- Irrigation Upgrade Rebate (Max **\$1000**)
 - Existing irrigation systems only
 - Either the homeowner or a licensed irrigator may do the work
 - Receipts must be itemized with labor and parts separated
 - Must submit the application within 30 days of completing the upgrade work



Irrigation Upgrade Program

- Conversion from Spray to Multi-Stream rotor nozzles (\$4/nozzle – up to \$200)
- Conversion of a Station to Drip (\$50)



- Rain or Soil moisture Sensors (\$50 – once per site)



Irrigation Upgrade Program

- Pressure Regulating Valve (\$150 – once per site)
- Pressure Regulating Components (50% of task up to \$400)
- Capping a Station (\$100 per station)
- Converting station from 2- or 4-inch pop up heads to 6-inch heads (\$3 a head, up to \$200)



Hose-end Timer Rebate Program

- Austin Water residential customers can receive rebates for 50% of the pre-tax purchase price for up to two (2) hose timers, with a maximum rebate of \$40 per service account. Any style or brand is eligible, from a simple mechanical timer to a multi-zone, programmable digital timer for multiple hoses. **Plumbing regulations require that these timers be used with hose bib vacuum breakers.**



Pool Cover Program



- Qualifying Austin Water residential customers can receive a rebate for 50% of the purchase price up to: \$50 for a new manual pool cover or solar rings; or \$200 for a new permanent, mechanical pool cover.



Cartridge Pool Filter Program - NEW

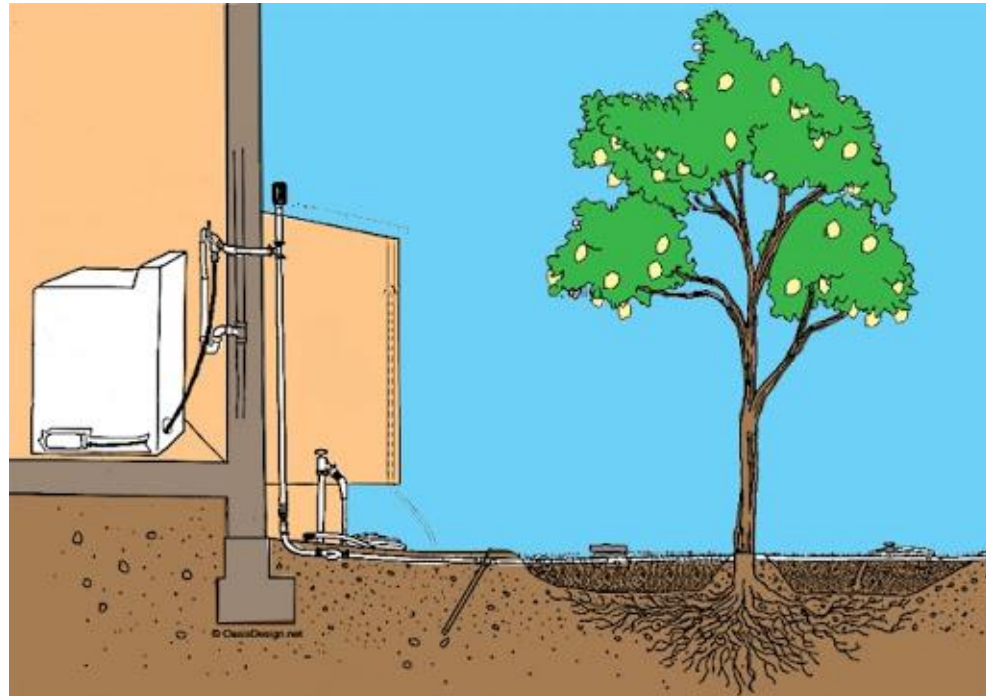
Residential and Commercial

- Up to \$250 to replace a sand or diatomaceous earth pool filter with a cartridge pool filter
- Rebate amount may not exceed total amount of eligible equipment costs



Laundry-to- Landscape Program - NEW

- Qualifying Austin Water residential customers can receive a rebate for 50% of eligible graywater system cost (up to \$150)
- Limit one rebate per address



Home Water Use Monitoring Device - NEW

- 75% of device cost, up to \$200
- Must be an Austin Water approved monitoring device, including but not limited to:
 - Buoy
 - Phyn
 - Flume
 - Flo by Moen – Smart Water Shutoff
 - Pani
 - Streamlabs Control



Free Stuff

- Soil Moisture Meters
- Sunlight Calculators
 - Check them out at the library
- Hose End Meters
 - Check them out at the library



My Contact

Chris Charles – Water Conservation Specialist

LI # 20725, TCLP 745

- Website: www.waterwiseaustin.org
- Water Conservation Mainline – 512-974-2199
- Email: christopher.charles@austintexas.gov

The Benefits of Compost



“For every 1% organic matter content, each cubic foot of soil can hold an additional 1.5 quarts of plant-available water” (Sullivan, 2002).

The Benefits of Mulch

- Mulch will reduce the amount of water that evaporates from your soil, greatly reducing your need to water your plants.
- Mulch improves the quality of clay soil by breaking it up and allowing better water and air movement through the soil.
- Mulch provides nutrients to sandy soil and improves its ability to hold water.
- Mulch acts as an insulating layer on top of soil, keeping roots cooler in the summer.



The Benefits of Turf Aeration

