

Blunn Creek Watershed 2000 Land Use

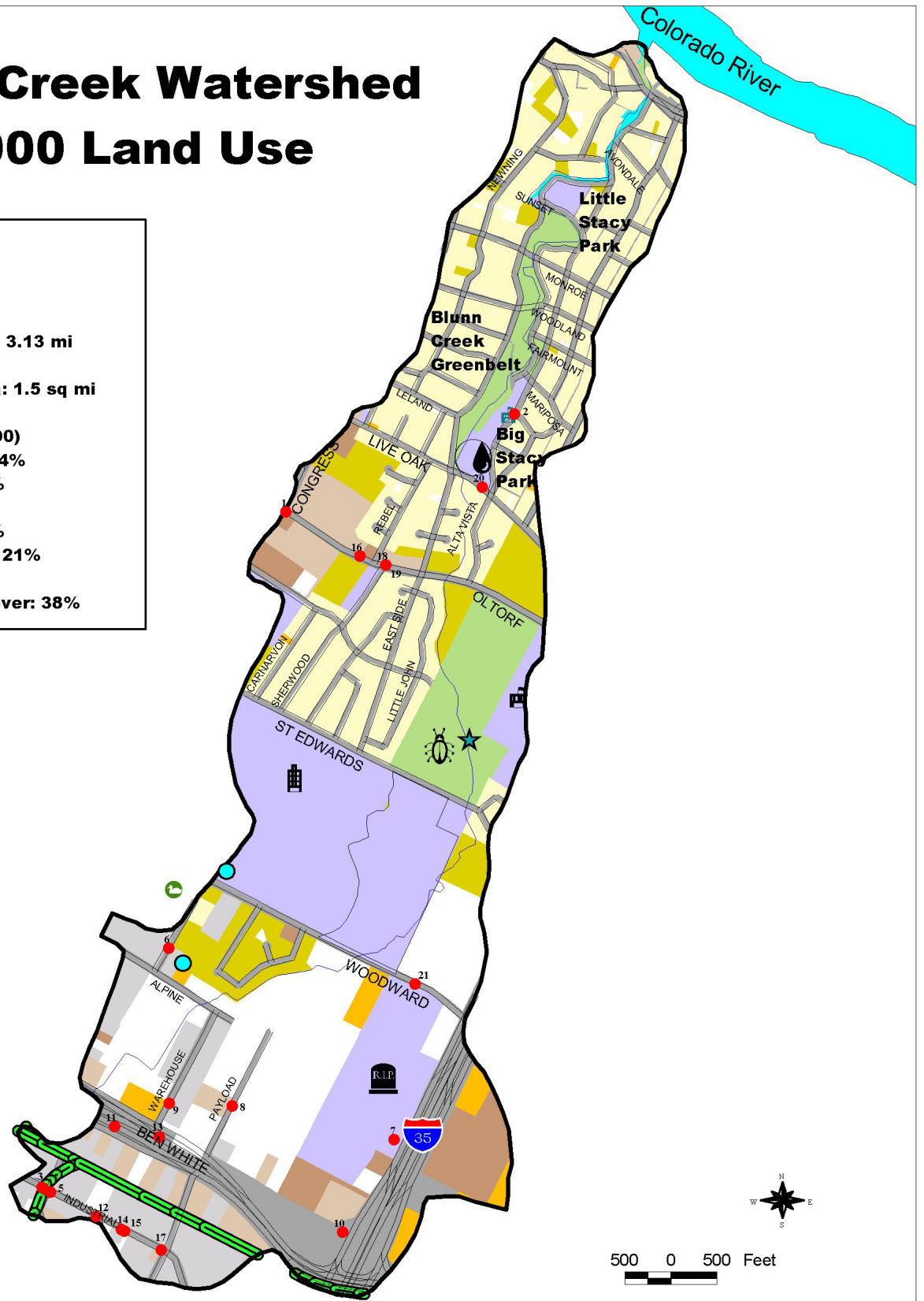
Population:
1996: 5,700
2040: 6,900

Creek Length: 3.13 mi

Drainage Area: 1.5 sq mi

Land Use (1990)
Residential: 34%
Business: 21%
Civic: 18%
Roadways: 6%
Undeveloped: 21%

Impervious cover: 38%



500 0 500 Feet



Watershed Protection & Management Program
The City of Austin is proud to be a leader in watershed protection and management. This map is a product of the Watershed Protection & Management Program, which is a partnership between the City of Austin, the Texas Department of Transportation, and the Texas Department of Water Resources.

- Houses
- Apartments
- Stores
- Office
- Schools & Community Centers
- Parks

- Transportation
- Undeveloped
- Industry
- Water

- Railroads
- Your sample site
- stormdrains

- Travis H.S.
- Travis Heights E.S.

- St. Edwards University

- Blunn Creek Preserve

- Cemetary

- Stacy Swimming Pool