



**Whispering Valley and  
West Cow Path  
Flood Risk Reduction Project**



# Agenda

- Introductions
- Presentation
- Questions



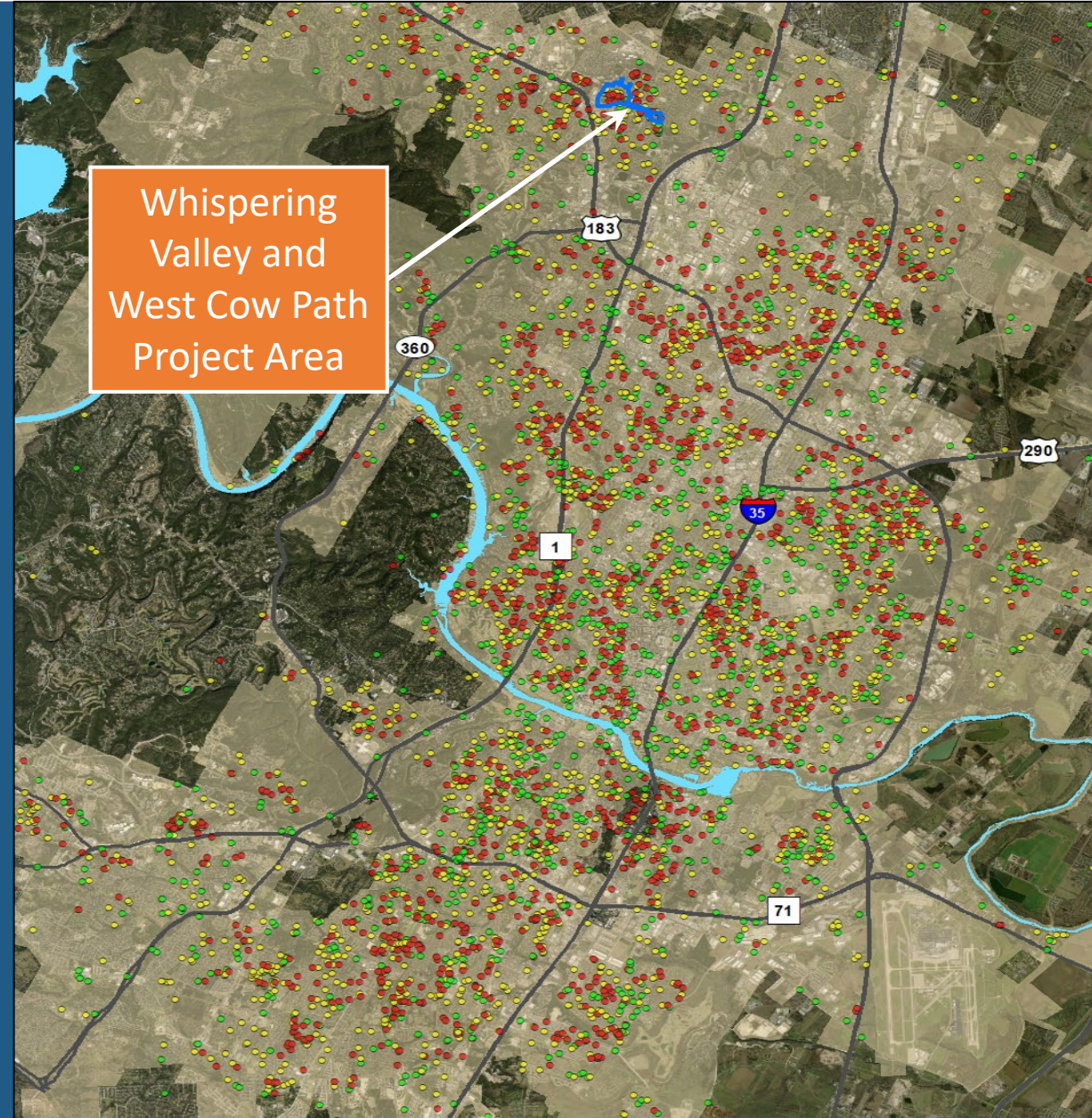
← **Localized Flooding**  
Occurs away from creeks.

**Creek Flooding** →  
Occurs when a creek rises over its banks.



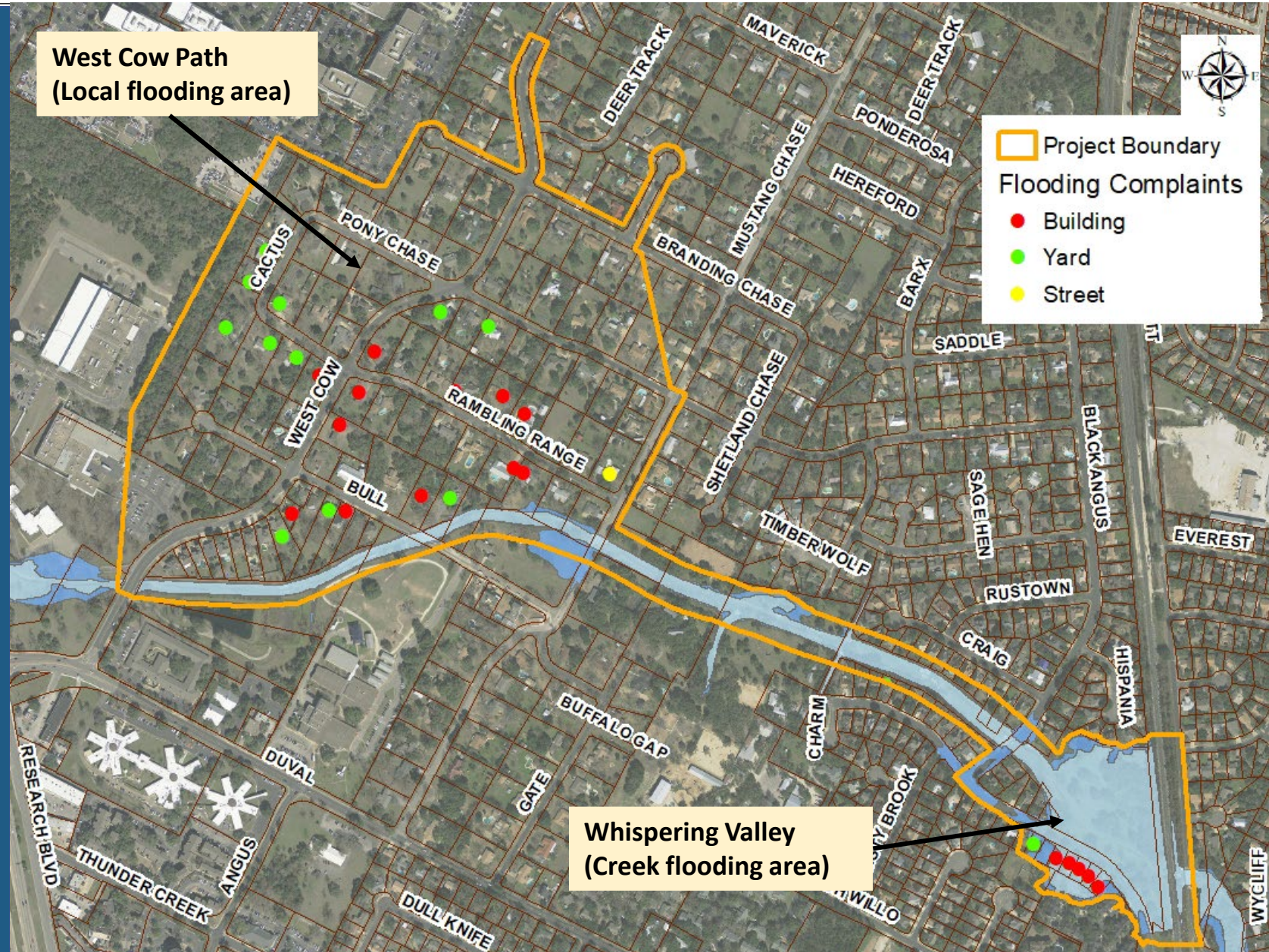
# Localized Flooding Citywide

- **6,562 Total Complaints**
  - 2,289 Buildings
  - 2,608 Yards
  - 1,665 Streets
- **Neighborhoods built before the 1980s tend to have more drainage problems**
- **No quick or easy solution**



# Whispering Valley and West Cow Path Flood Risk Reduction Project Area

- Located in northwest Austin
- West Cow Path – Local flooding area
- Whispering Valley – Creek flooding area



# West Cow Path Flooding

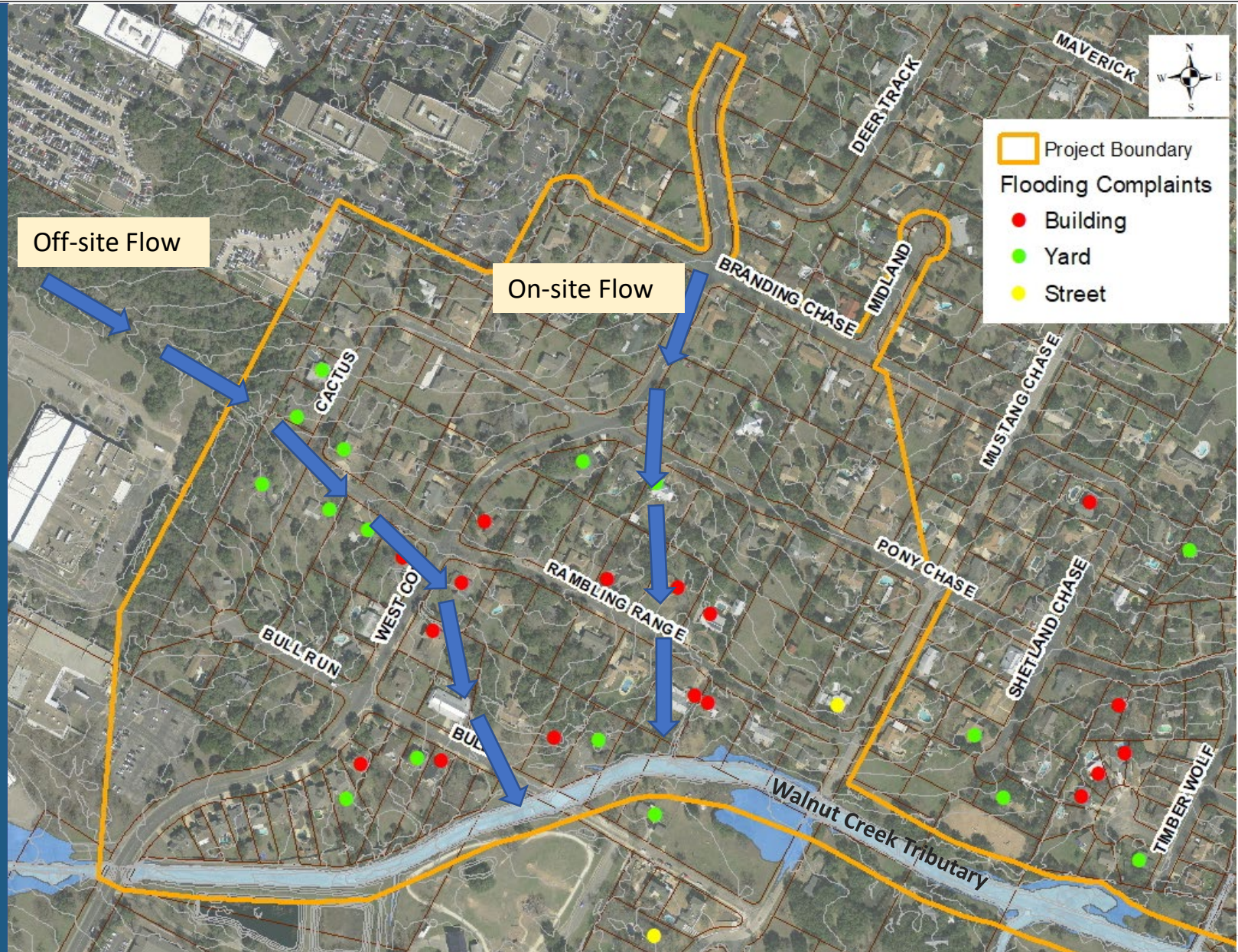
## ➤ Local Flooding Complaints

- 12 buildings
- 11 yards
- 1 street

## ➤ Existing infrastructure - roadside ditches with marginal capacity

## ➤ Two sources of flooding

- Off-site flow
- On-site flow



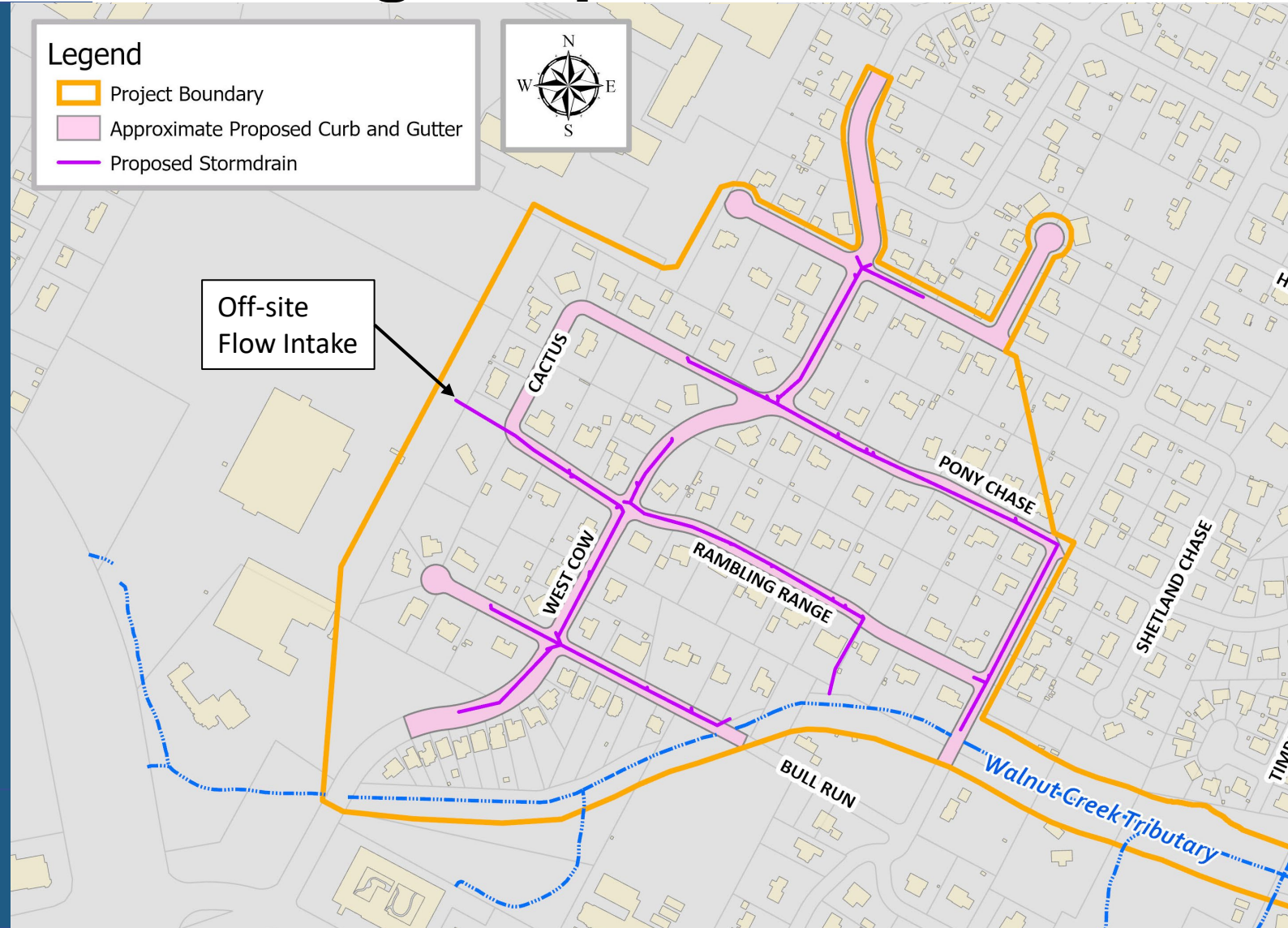
# West Cow Path Drainage Improvements

## • On-site flow

- Curb and Gutter with storm drain infrastructure
- Three separate networks
- Outfall to the creek

## • Off-site flow

- Upsize and extend pipe along Rambling Range west



# Components of a Storm Drain System

1. Inlets and curbs capture rainwater.



2. Underground pipes carry the water.



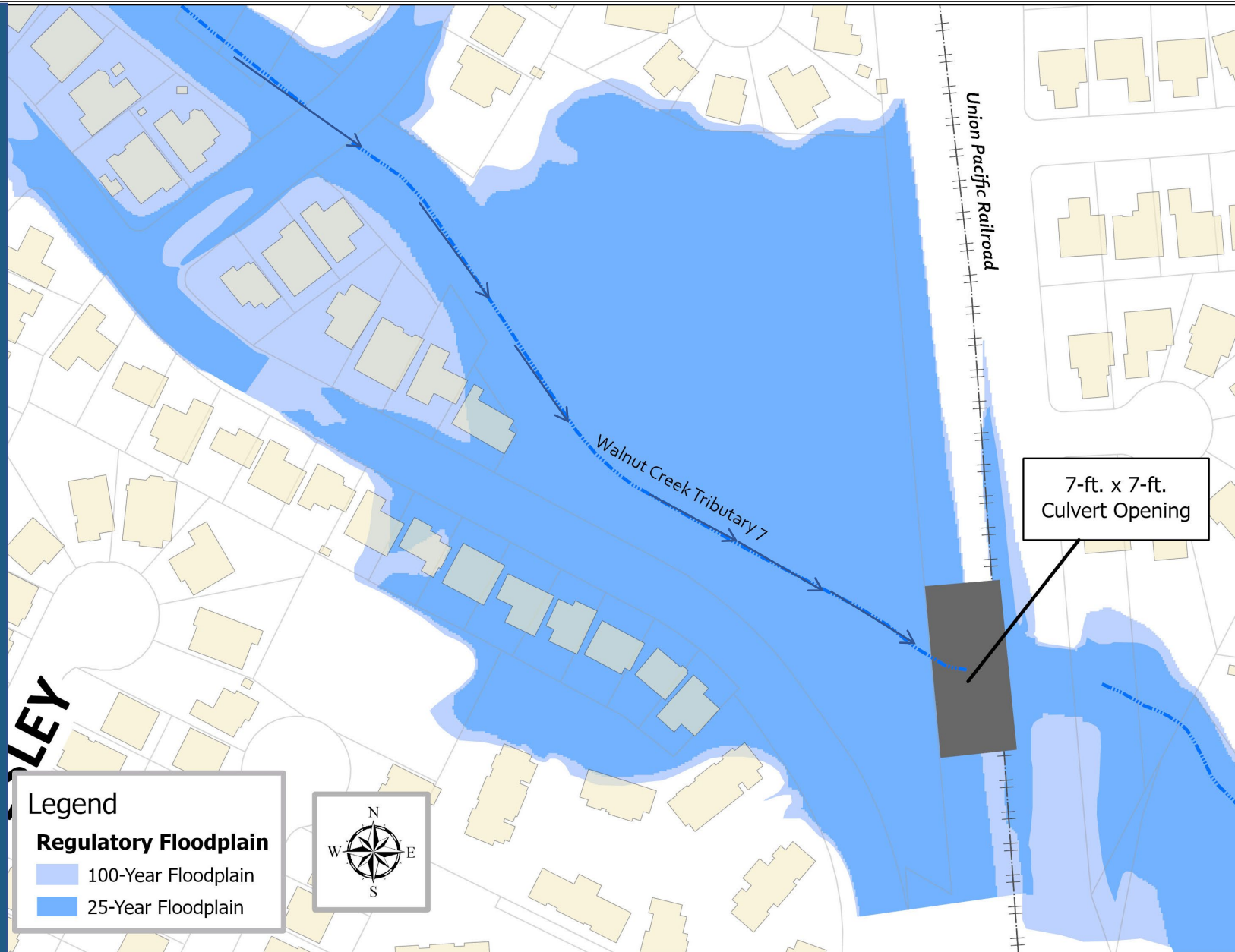
3. Rainwater is released into a creek at the outfall. Sometimes it goes to a water quality or detention pond first.





# Whispering Valley Flooding

- Union Pacific Railroad (UPRR) crossing
  - 7-ft x 7-ft opening
  - Less than 2-year storm capacity (4.1 inches in 24-hrs)
- Several structures in the floodplain



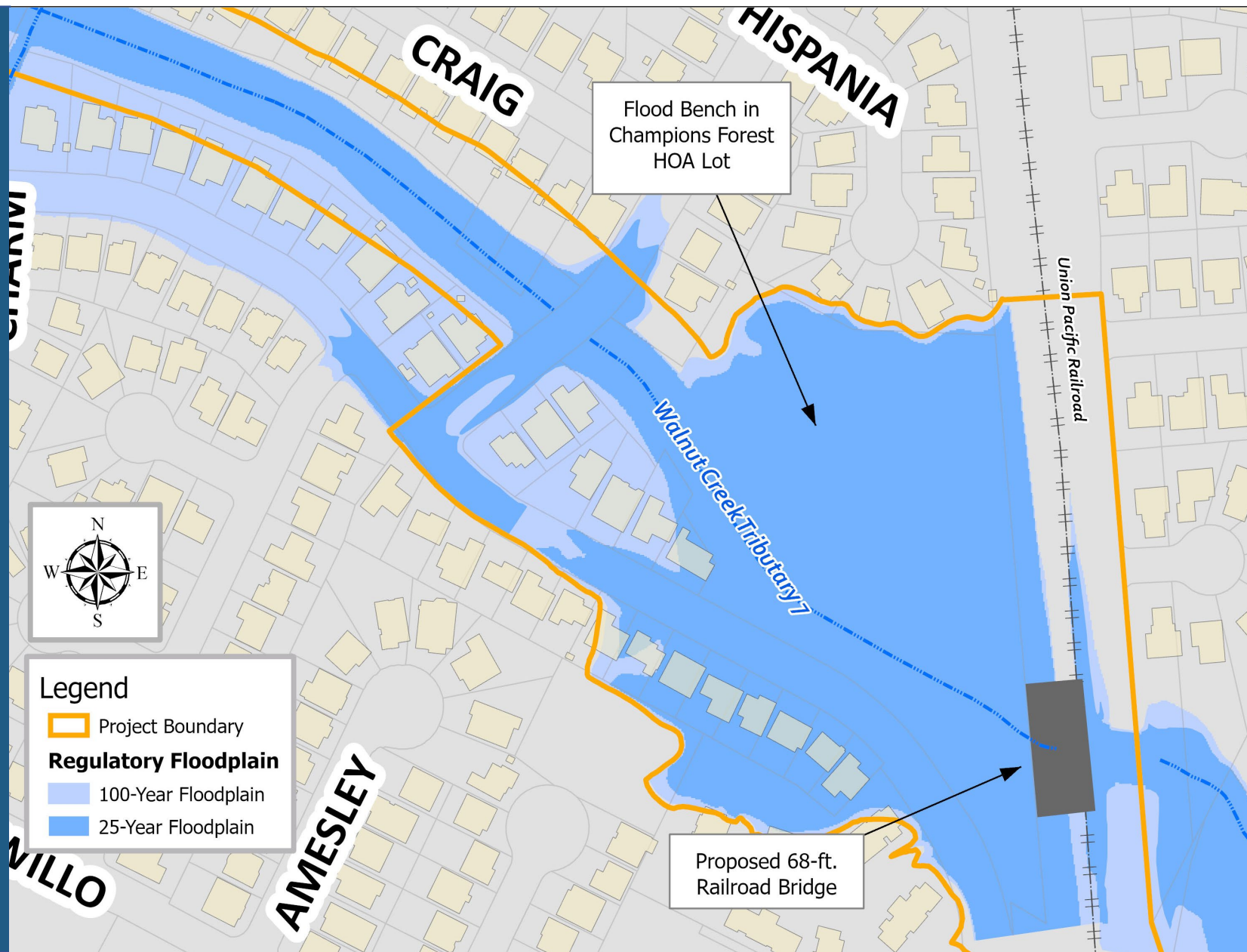
**Legend**  
**Regulatory Floodplain**

- 100-Year Floodplain
- 25-Year Floodplain

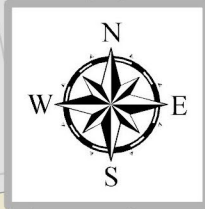


# Whispering Valley Improvements




- Proposed 68-ft bridge upgrade to culvert by UPRR
- Flood bench in the Champions Forest HOA lot



Offsite Flow Intake

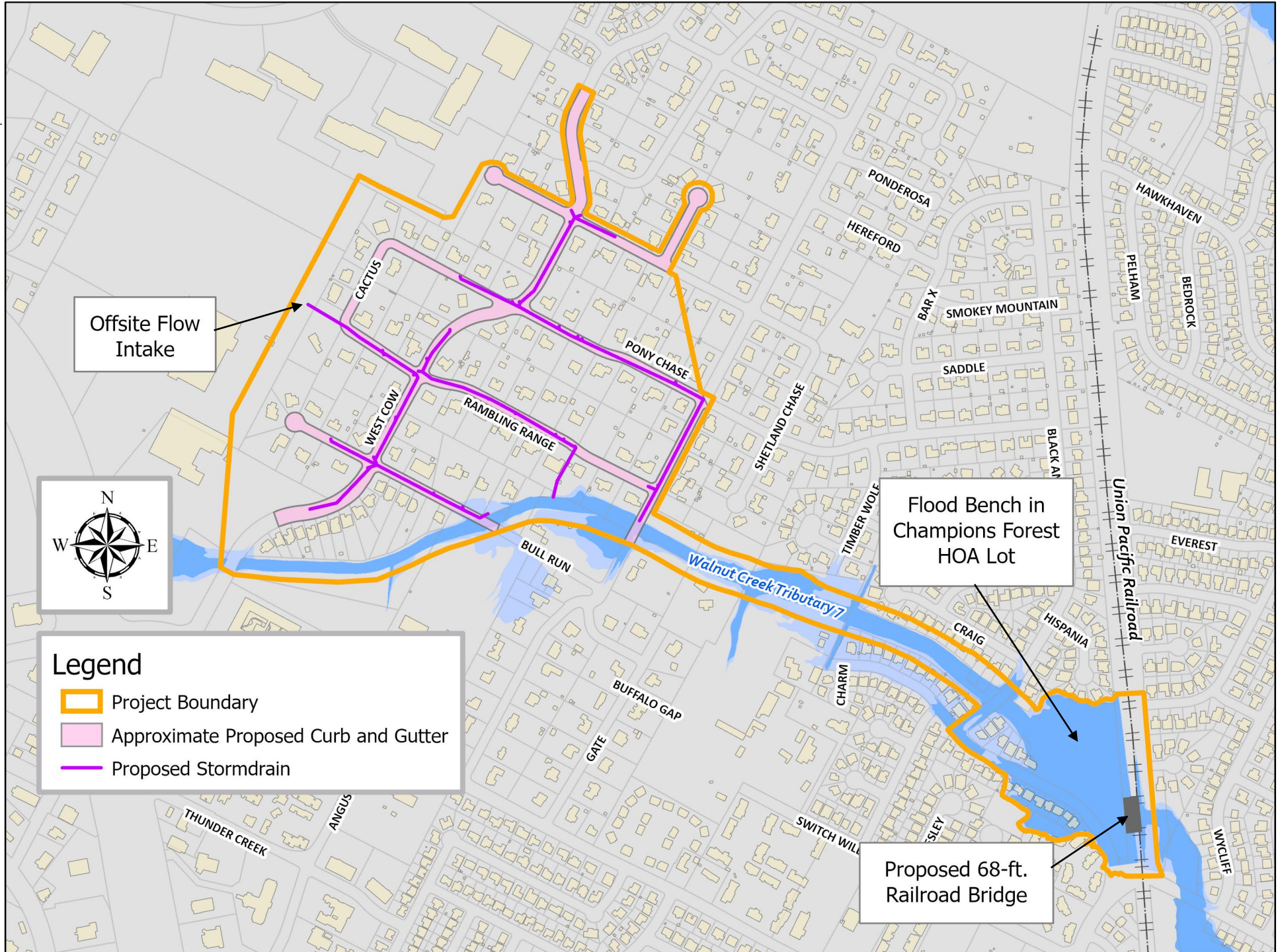


**Legend**

-  Project Boundary
-  Approximate Proposed Curb and Gutter
-  Proposed Stormdrain

Flood Bench in Champions Forest HOA Lot

Proposed 68-ft. Railroad Bridge



# Project Update

- **Whispering Valley and West Cow Path – Divided into two separate projects**
- **Whispering valley**
  - Design phase
  - Estimated construction start date Summer 2023
  - Coordination with Union Pacific Rail-Road (UPRR)
- **West Cow Path**
  - Design phase to start after agreement is established
  - Coordination with 3M redevelopment
- Project web site <https://www.austintexas.gov/whisperingvalley>

# Thank you!

## Questions?

Rupali Sabnis, P.E., CFM

[Rupali.Sabnis@austintexas.gov](mailto:Rupali.Sabnis@austintexas.gov)

(512)-974-3375

Octaviano, Dario

[Dario.Octaviano@austintexas.gov](mailto:Dario.Octaviano@austintexas.gov)

(512)-974-7607

