

Austin Police Department

Downtown Area Command East 6th Street Update

Downtown Area Command

East 6th Street Entertainment Area

East 6th Street Entertainment
Area is bounded by E. 5th
Street, E. 7th Street, Congress
Ave. and IH-35.



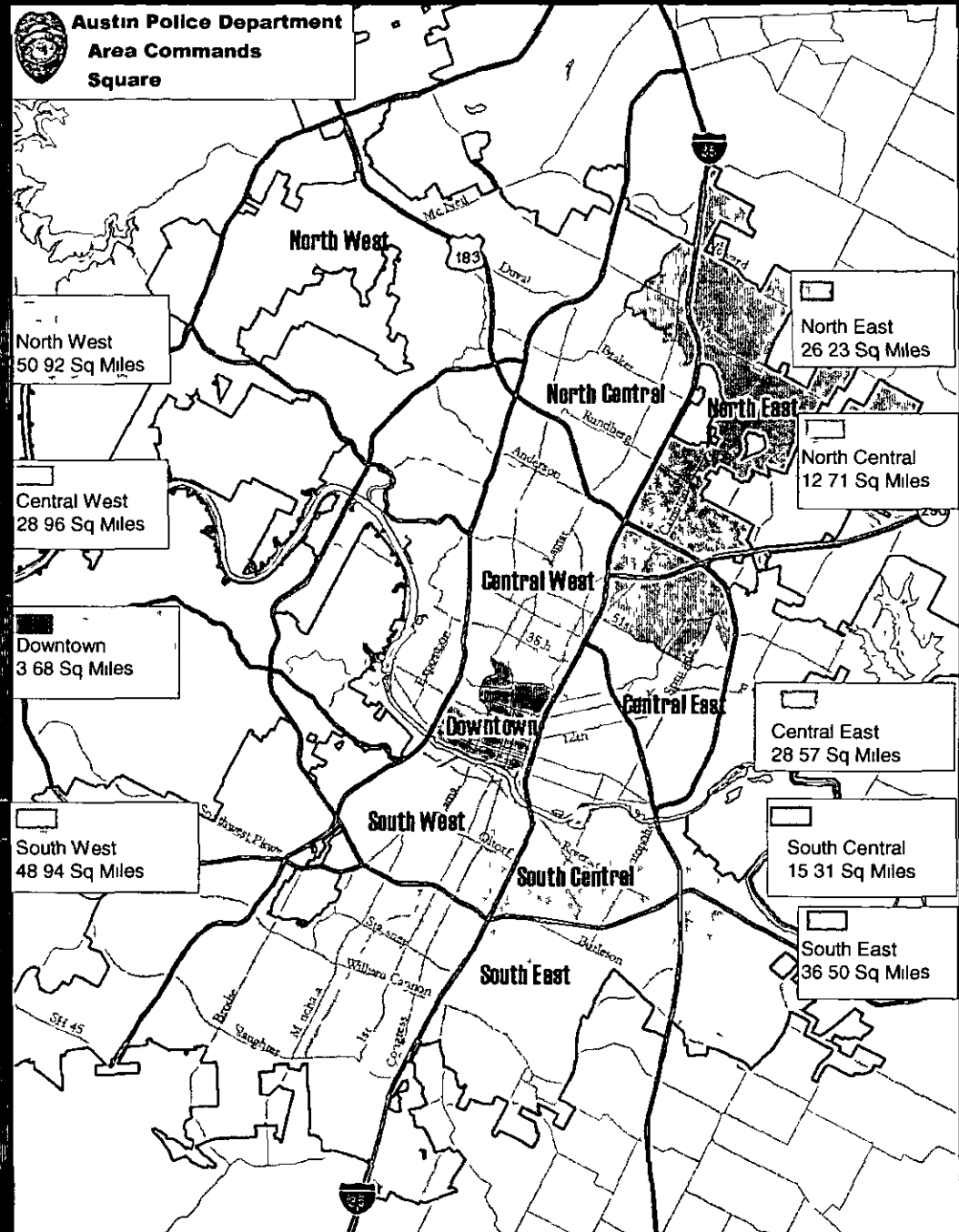
Staffing: Relating to DTAC

DTAC		Austin Police Dept. Area Commands		
Sworn	Civilian	Area Command	Sworn	Civilian
120	13	North West	97	3
		North East	97	3
		North Central	93	2
Staffing at Peak times in DTAC		South West	121	3
		South East	107	3
6 th St	Rest of DTAC	South Central	103	3
40%*	60%	Central West	107	3
		Central East	128	2
		Average	107	3

* Denotes Available On-Duty Personnel

Square Mileage Chart

Area Command	DTAC's Comparison to the Command
North West 50.92 Sq Miles	7.2%
North Central 12.71 Sq Miles	28.9%
North East 26.23 Sq Miles	14.0%
Central West 28.96 Sq Miles	12.7%
Central East 28.57 Sq Miles	12.9%
South West 48.94 Sq Miles	7.5%
South Central 15.31 Sq Miles	24.0%
South East 36.50 Sq Miles	10.1%



Violent Crime**: 2005 vs. 2006

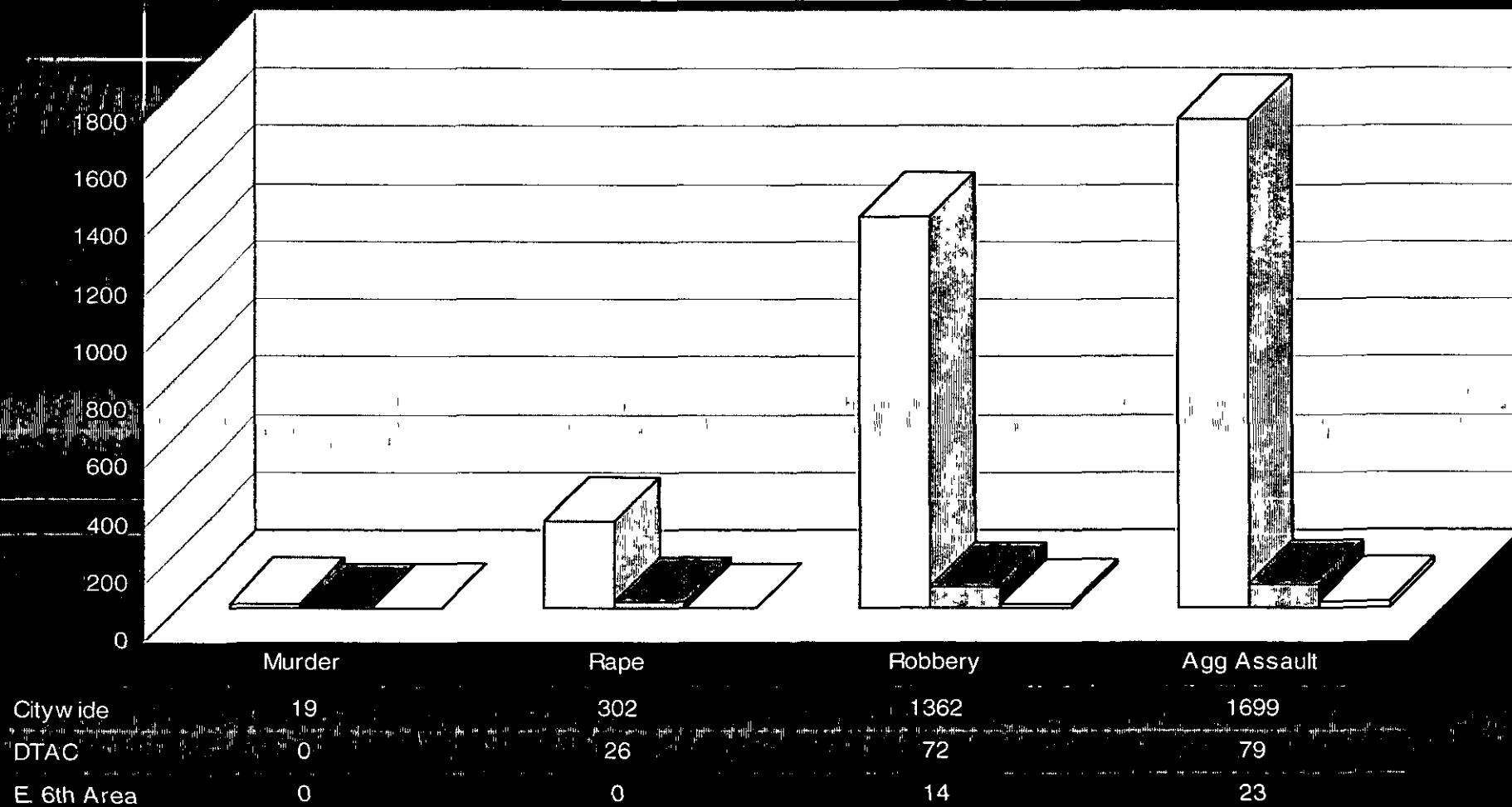
- In 2006, violent crime was up approximately **10%** citywide
- Although violent crime increased throughout the city, DTAC had approximately a **16%** decrease
- Comparatively, violent crime in the East 6th Street Entertainment Area* decreased approximately **24%**

**Violent crime=murder, robbery, rape, aggravated assault

*East 6th Street Entertainment Area is bounded by E. 5th Street, E. 7th Street, Congress Ave. and IH-35.

Violent Crime

Citywide DTAC E. 6th Area



*East 6th Street Entertainment Area is bounded by E. 5th Street, E. 7th Street, Congress Ave. and IH-35.

- The following charts indicate a significant decrease in Index 1 crimes for the Downtown area, and specifically for the E. 6th Street Entertainment Area*.
- Citywide, Index 1 crimes have been relatively stable as compared to those of 2005.

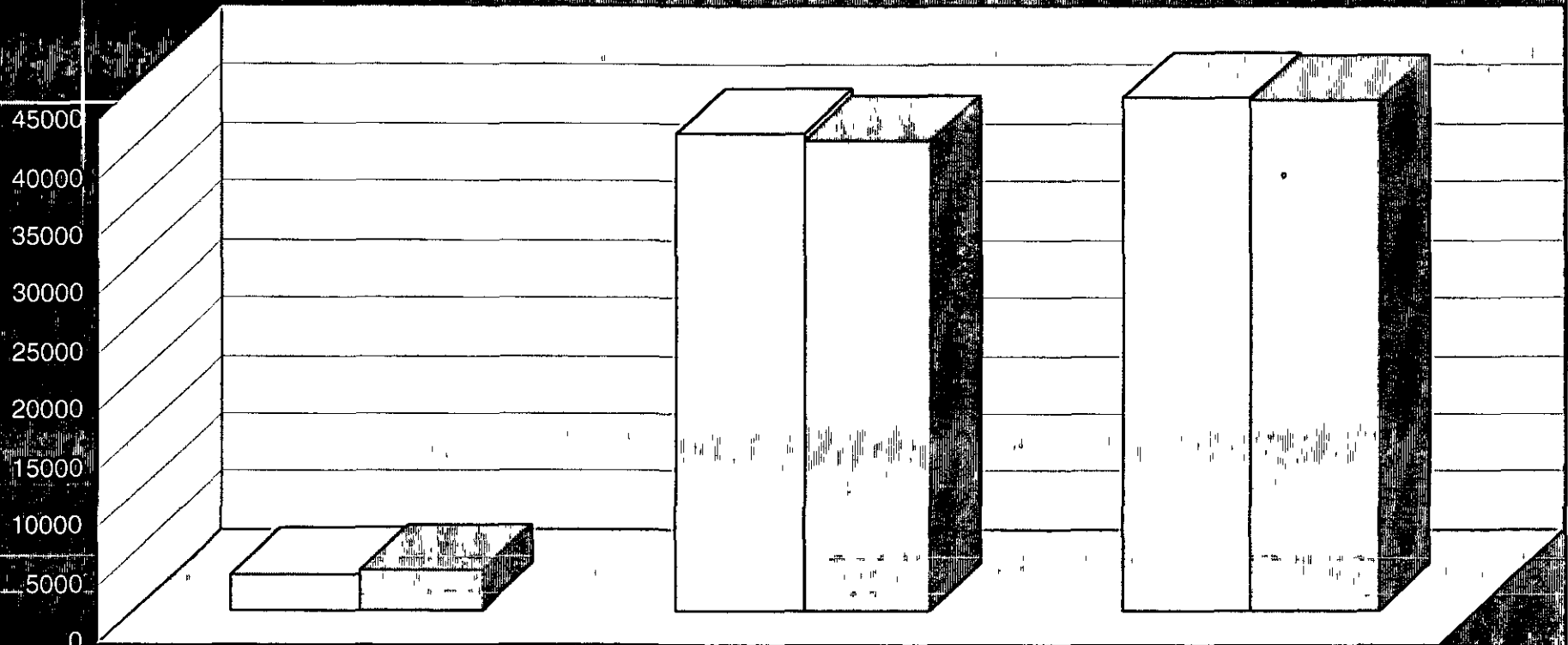
Note: These are not official UCR numbers.

Information obtained by using Occurred Date and Highest Offense Code.

*East 6th Street Entertainment Area is bounded by E. 5th Street, E. 7th Street, Congress Ave. and IH-35.

Citywide 2005 v.s. 2006

Citywide '05 Citywide '06



Violent Crime Total:

Property Crime Total:

Index 1 Crime TOTAL:

Citywide '05

3078

41010

44088

Citywide '06

3382

40457

43839

% Change

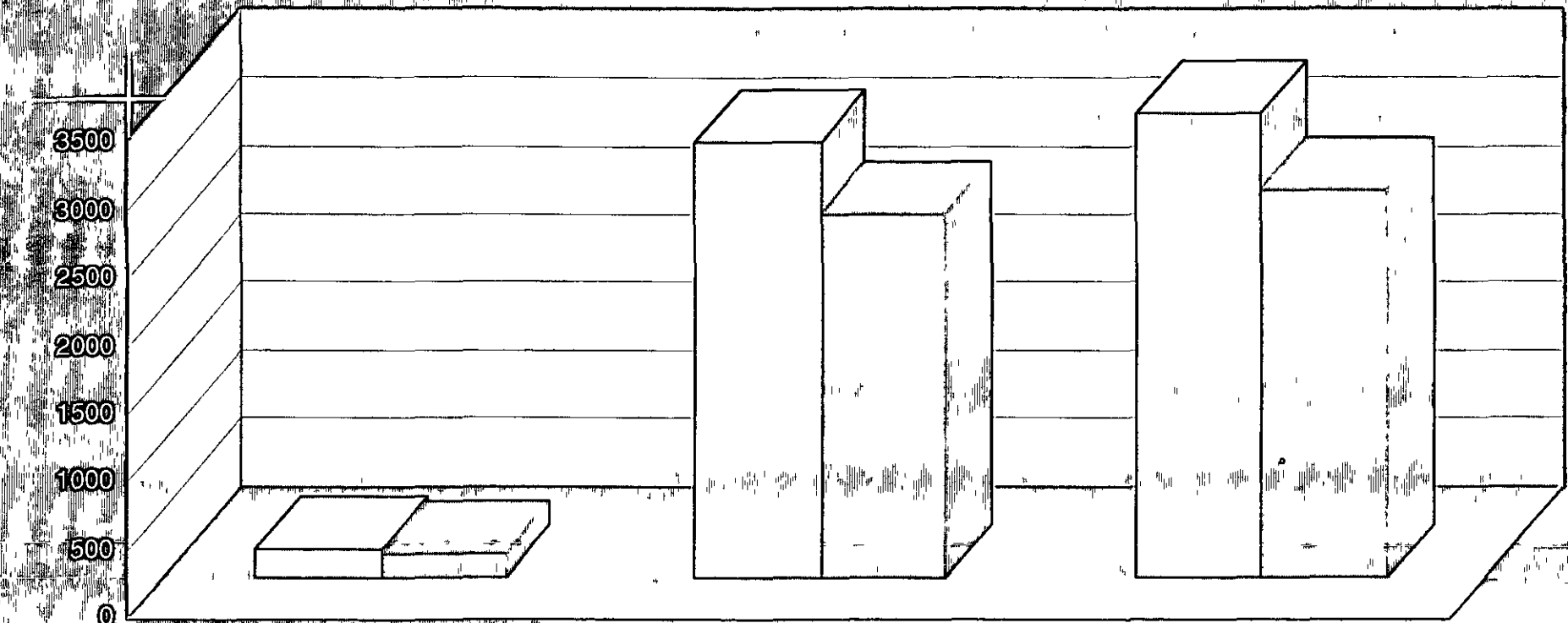
9.88% Increase

1.35% Decrease

.56% Decrease

DTAC 2005 vs. 2006

□ DTAC '05 □ DTAC '06



Violent Crime Total:

Property Crime Total:

All Crime TOTAL:

DTAC '05

211

3214

3425

DTAC '06

177

2688

2865

% Change

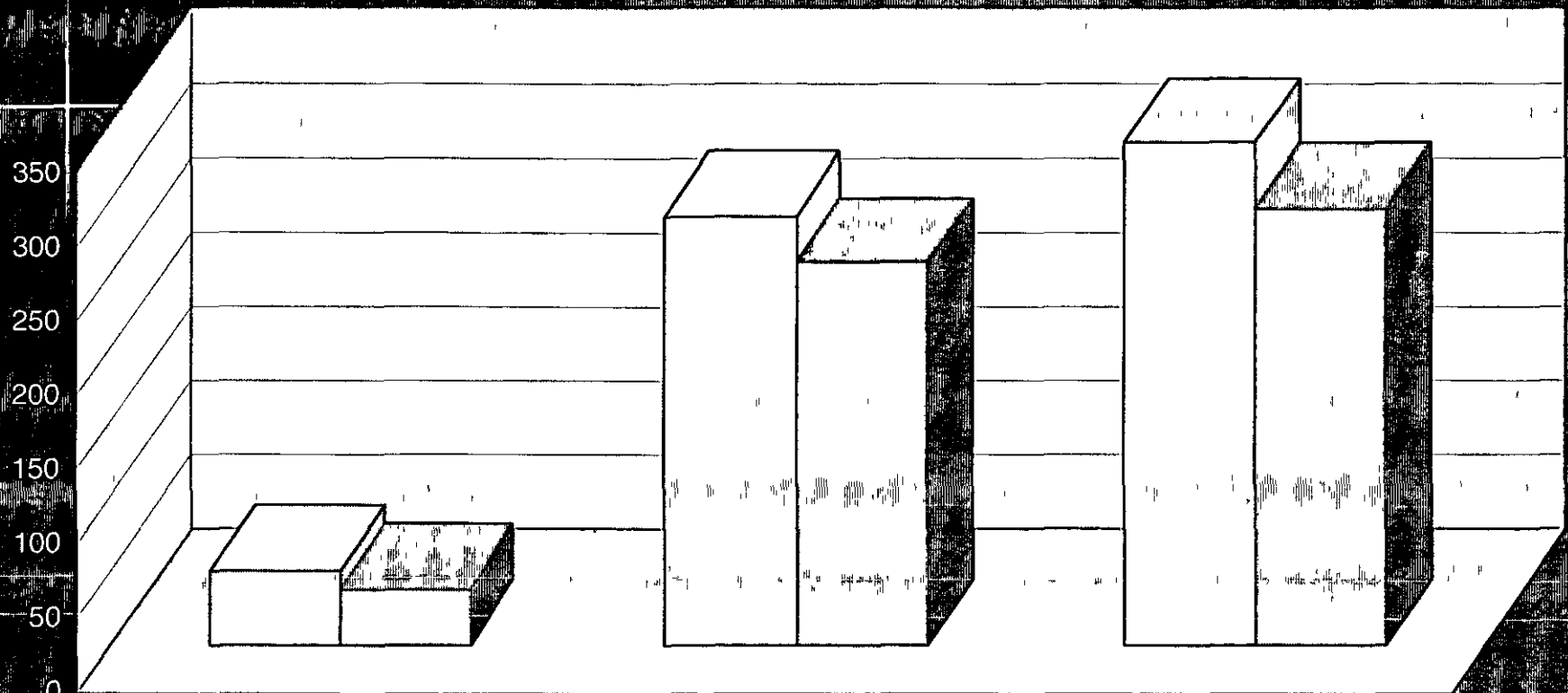
16.11% Decrease

16.37% Decrease

16.35% Decrease

E. 6th Street 2005 vs. 2006

□ E 6th St '05 □ E 6th St '06



Violent Crime Total:

Property Crime Total:

All Crime TOTAL:

E 6th St '05

49

288

337

E 6th St '06

37

257

294

% Change

24.49% Decrease

10.76% Decrease

12.76% Decrease

*East 6th Street Entertainment Area is bounded by E. 5th Street, E. 7th Street, Congress Ave. and IH-35.

Crime on East 6th Street*

	<u>Citywide</u>	<u>DTAC</u>	<u>E. 6th St</u>
Murder	19	0	0
Rape	302	26	0
Robbery	1362	72	14
Aggravated Assault	1699	79	23
Burglary	7307	229	6
BOV	14264	967	26
Theft (except BOV)	16542	1368	215
Auto Theft	2344	124	10
TOTAL:	43839	2865	294

*East 6th Street Entertainment Area is bounded by E. 5th Street, E. 7th Street, Congress Ave. and IH-35.

Crime on East 6th Street* Compared to Citywide

**Of all of the Part 1 crimes that occurred
Citywide in 2006:**

- **1.03% of Robberies were on East 6th**
- **1.35% of Aggravated Assaults were on East 6th**
- **.18% of BOVs and .43% of Auto Thefts were on East 6th**

*East 6th Street Entertainment Area is bounded by E. 5th Street, E. 7th Street, Congress Ave. and IH-35.

Crime on East 6th Street*

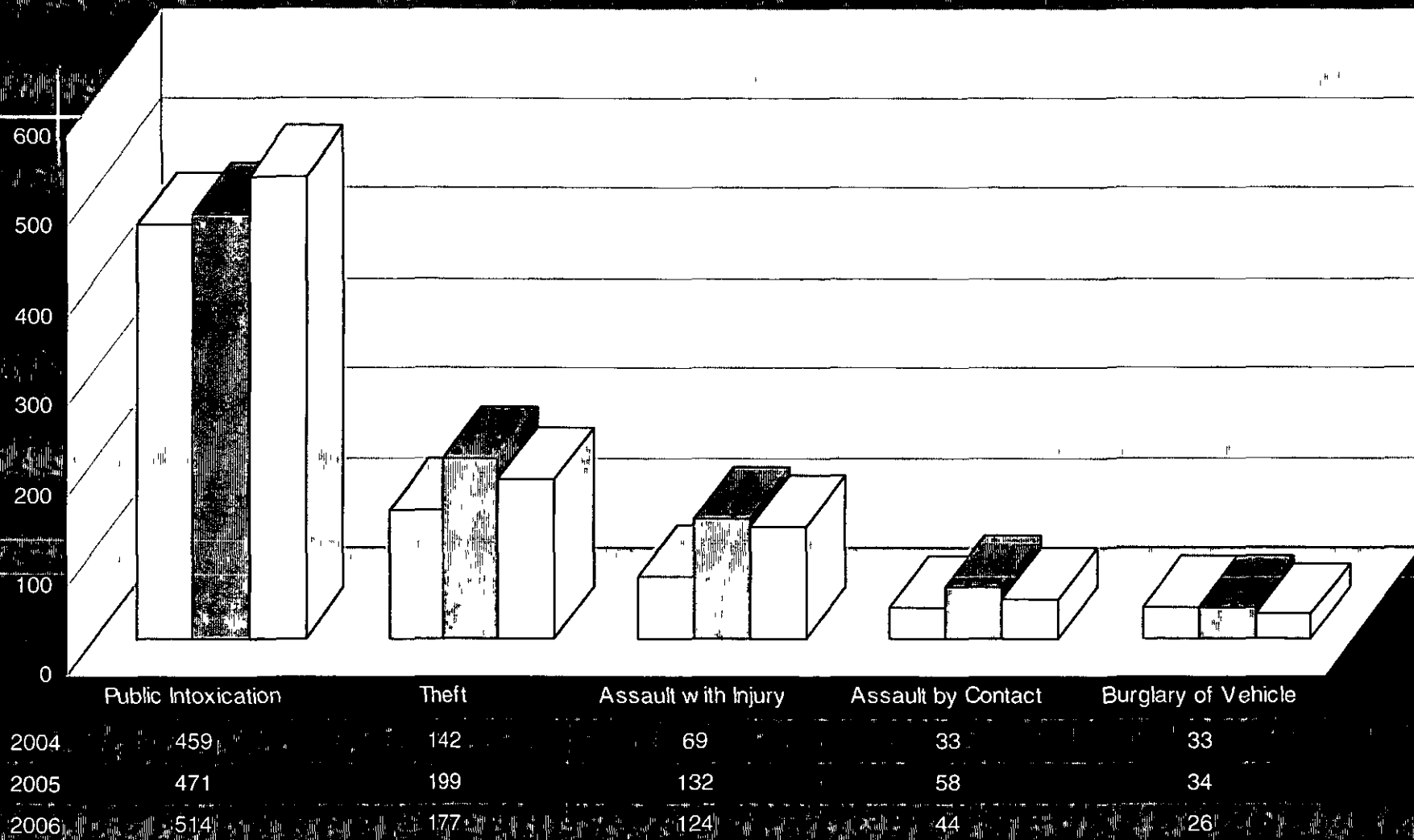
Majority of offenses that occur on East 6th are not Part 1 crimes. Most numerous offenses on East 6th street in 2006 were:

PUBLIC INTOXICATION	514
THEFT	177
ASSAULT WITH INJURY	124
ASSAULT BY CONTACT	44
BURGLARY OF VEHICLE	26
Grand Total	885

*East 6th Street Entertainment Area is bounded by E. 5th Street, E. 7th Street, Congress Ave. and IH-35.

E. 6th Street*: Top 5 Offenses

□ 2004 □ 2005 □ 2006



*East 6th Street Entertainment Area is bounded by E. 5th Street, E. 7th Street, Congress Ave. and IH-35.

History of Barricades on 6th

- In the early 1980's, the 6th street area was made up of numerous businesses and restaurants. There were a few bars, but not many. Barricades were not necessary.
- By the late 1980s, the area was transforming into more of an entertainment district. There were thousands of students (both university and high school) and others that patronized the increasing number of clubs and bars on E 6th Street. The mixture of vehicles and foot traffic lead to increased confrontations between drivers and (often intoxicated) pedestrians. There was also an increased level of gang activity due to cruising. Unlike the present, there were no curfew, outdoor alcohol consumption, or open container ordinances in place at the time. Eventually, barricades were used to curb some of these activities.
- We continue to use barricades because the pedestrian infrastructure is not capable of handling the number of pedestrians on a typical Thu-Sat night; this is simply a matter of public safety. As Austin has grown, E. 6th Street has seen not only an increase in the number of bars, but also the number of persons visiting the area to patronize those bars. There has been no corresponding increase in pedestrian infrastructure and, consequently, the problem has only been magnified

History of Barricades on 6th

- Barricades typically come up no earlier than 10:30pm Thursday-Saturday nights. Barricades are placed at this time for a few reasons:
 - Shut down the street while the manpower is available
 - Stay ahead of pedestrian traffic (Preventive Mode instead of Reactive Mode)
 - Police response is much quicker when the streets are barricaded
 - So as not to interfere with customer access to restaurants
 - Barricades are not used when crowds are small due to rain and cold weather.
-
- DTAC has tried not barricading; however, those times were short lived due to the same reoccurring problems.
 - Today, on any given Friday/Saturday night, you can expect to see anywhere between 7,000-10,000 pedestrians in the 6th street area.

What does the future hold?

- Mayor Will Wynn stated that he would like to see the number of residents in the downtown area increase to 25,000 people over the next 10 years (by 2016)
- These additional residents, as well as higher density developments in the West Campus area patrolled by DTAC, will transform the entire area and additional officers will be required to compensate for this growth.

Conclusion

The Downtown's Area Command's priority is to keep East 6th Street safe for residents and visitors.



The Downtown Area requires flexibility in staffing.