

ORDINANCE NO. 20070405-042

AN ORDINANCE REZONING AND CHANGING THE ZONING MAP FOR THE PROPERTY COMMONLY KNOWN AS THE ST. DAVID'S MEDICAL CENTER PUD LOCATED AT 919-1025 AND 918-1004 EAST 32ND STREET, 900 EAST 30TH STREET, AND 3000-3018 NORTH IH-35 IN THE HANCOCK NEIGHBORHOOD PLAN AREA FROM GENERAL OFFICE-MIXED USE-NEIGHBORHOOD PLAN (GO-MU-NP) COMBINING DISTRICT, GENERAL COMMERCIAL SERVICES-NEIGHBORHOOD PLAN (CS-NP) COMBINING DISTRICT, GENERAL COMMERCIAL SERVICES-CONDITIONAL OVERLAY-NEIGHBORHOOD PLAN (CS-CO-NP) COMBINING DISTRICT, AND COMMUNITY COMMERCIAL-CONDITIONAL OVERLAY-NEIGHBORHOOD PLAN (GR-CO-NP) COMBINING DISTRICT TO PLANNED UNIT DEVELOPMENT-NEIGHBORHOOD PLAN (PUD-NP) COMBINING DISTRICT

BE IT ORDAINED BY THE CITY COUNCIL OF THE CITY OF AUSTIN:

PART 1. The zoning map established by Section 25-2-191 of the City Code is amended to change the base zoning district from general office-mixed use-neighborhood plan (GO-MU-NP) combining district general commercial services-neighborhood plan (CS-NP) combining district, general commercial services-conditional overlay-neighborhood plan (CS-CO-NP) combining district, and community commercial-conditional overlay-neighborhood plan (GR-CO-NP) combining district to planned unit development-neighborhood plan (PUD-NP) combining district on the property described in File C814-06-0068 on record at the Neighborhood Planning and Zoning Department, as approximately 14 acres of land, more or less, being more particularly described in Exhibit A (*Description of Property*) incorporated into this ordinance (the "Property"), locally known as the property located at 919-1025 and 918-1004 East 32nd Street, 900 East 30th Street, and 3000-3018 North IH-35, in the City of Austin, Travis County, Texas, and generally identified in the map attached as Exhibit B (*Zoning Map*).

PART 2. This ordinance, together with the attached Exhibits A through D, are the land use plan for the St. David's Medical Center planned unit development district (the "PUD") created by this ordinance. The PUD shall conform to the limitations and conditions set forth in this ordinance and in the St. David's Medical Center planned unit development land use plan. If this zoning ordinance and the attached exhibits conflict, the PUD ordinance applies. Except as otherwise specifically provided by this ordinance, all other rules, regulations and ordinances of the City in effect on the effective date of this ordinance apply to the PUD.

PART 3. The attached exhibits are incorporated into this ordinance in their entirety as though set forth fully in the text of this ordinance. The exhibits are as follows:

Exhibit A:	Description of Property
Exhibit B:	Zoning Map
Exhibit C:	Land Use Plan
Exhibit D:	Landscaping Plan

The Property is subject to Ordinance No. 040826-59 that established the Hancock neighborhood plan combining district.

PART 4. Definitions.

A. In this ordinance:

ZONE means the area identified on Exhibit C for the purpose of showing where a specific height or other condition is allowed. There are 7 separate zones shown on the Land Use Plan.

B. All other terms have the meaning provided in the Code.

PART 5. In accordance with Section 25-2-411 (A) (*Planned Unit Development District Regulations*) of the City Code, the following regulations apply to the PUD instead of otherwise applicable City regulations.

- A. Section 25-2-243 (*Proposed District Boundaries Must Be Contiguous*) of the City Code does not apply to the PUD.
- B. Section 25-2, Article 10 (*Compatibility Standards*) of the City Code applies to Zones 1, 4, and 5 of the PUD with the exception of heights and setbacks.
- C. Except as set forth in the ordinance, the Property is subject to general commercial services (CS) uses and site development regulations.
- D. The maximum impervious cover is 87 percent.
- E. The floor-to-area ratio is 3.0 to 1.0 over the entire site as shown on the Land Use Plan.

F. Uses.

1. The following uses are the only permitted principal uses of the PUD:

Medical offices (not exceeding 5000 sq. ft. of gross floor area)
Medical offices (exceeding 5000 sq. ft. of gross floor area)
Hospital services (general)
Hospital services (limited)

2. The following uses are accessory uses to the principal uses and shall comply with the requirements of Section 25-2-894 (*Accessory Uses For A Principal Commercial Use*). These accessory uses include but are not limited to:

Administrative and business offices	Building maintenance services
Business support services	Commercial blood plasma center
Commercial off-street parking	Food sales
General retail sales (convenience)	Hotel-motel
Indoor entertainment	Laundry services
Off-site accessory parking	Personal improvement services
Personal services	Professional office
Recreational equipment maintenance and storage	Research services
Research warehousing services	Research testing services
Camp	Restaurant (limited)
College and university facilities	Club or lodge
Community recreation (public)	Community events
Counseling services	Convalescent services
Employee recreation	Daycare services (general)
Residential treatment	Guidance services
Telecommunications tower	Safety services

3. A new or relocated facility for helicopters and other nonfixed wing aircraft must comply with Section 25-2-861 (*Facilities for Helicopters and Other Nonfixed Wing Aircraft*).

G. The following maximum height regulations apply to each Zone as follows:

Zone 1 - 90 feet;

Zone 2 - 60 feet;

Zone 3 - 90 feet;

Zone 4 - 125 feet on 40 percent of the gross area, and
90 feet on 60 percent of the gross area;

Zone 5 - 175 feet on 50 percent of the gross area, and
90 feet on 50 percent of the gross area;

Zone 7 - 80 feet.

H. Zone 6 shall be maintained as a landscaped area.

I. At the time of site plan, except as provided in Subsection J, landscaping shall be accomplished according to criteria set forth in the City Code.

J. At the time of approved site plan in Zones 1, 2, and 3, improvements shall be made to the Red River right-of-way along with landscaping improvements to the areas shown in Exhibit D.

K. A tree located in Zone 5 and Zone 6 as depicted on the Land Use Plan is a protected tree as set forth in Section 25-8, Subchapter B, Article 1 (*Tree and Natural Area Protection*) of the Code.

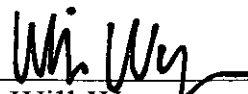
L. A minimum 10,000 square feet shall be provided and maintained for an interior courtyard in Zone 4.

PART 6. This ordinance takes effect on April 16, 2007.

PASSED AND APPROVED

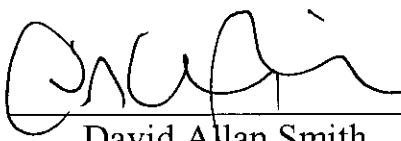
_____, April 5, 2007

§
§
§



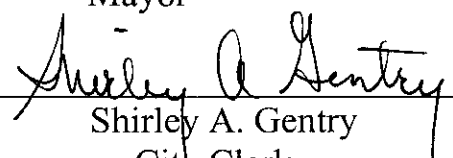
Will Wynn
Mayor

APPROVED:



David Allan Smith
City Attorney

ATTEST:



Shirley A. Gentry
City Clerk

EXHIBIT A LEGAL DESCRIPTION

Main Campus

12.65 acres of land, more or less, as more particularly described below:

Lot 1, Saint David's Community Hospital Addition, a subdivision in the City of Austin, Travis County, Texas, according to the map or plat of record in Plat Book 81, Page 366, of the Plat Records of Travis County, Texas

Greusen Resubdivision of a portion of Lot 6, Outlot 23, Division C, recorded in Volume 10, Page 77, of the Official Plat Records of Travis County, Texas

Joe Manor, Trustee Subdivision recorded in Volume 16, Page 43, of the Official Plat Records of Travis County, Texas

1.54 acres of land out of Outlot 23, Division C of the Government Tract adjoining the Original City of Austin, Travis County, Texas in a Deed recorded in Volume 12725, Page 1436, Travis County Deed Records

North 32nd St.

1.72 acres of land, more or less, as more particularly described below:

9,570 s.f. out of Outlot 22, Division C, of the Government Outlots adjoining the Original City of Austin

10,500 s.f. out of Outlot 22, Division C, of the Government Outlots adjoining the Original City of Austin

11,551 s.f. out of Outlot 22, Division C, of the Government Outlots adjoining the Original City of Austin

21,000 s.f. out of Outlot 22, Division C, of the Government Outlots adjoining the Original City of Austin

Lot 2 of the C.P.L.M.A. Subdivision II, recorded in Volume 100, Page 93, of the Official Plat Records of Travis County, Texas





BLANCKE SPECIALTIES 1724 SO. 17. COMMERCIAL, COMMUNICATIONS, SERVICE CO.	
MANUFACTURED WAREHOUSE LOT #22 DIMENSIONS LOT 100'X175'	40' X 60' 1/2 47% 10' X 16' 1/2 10' X 22' 1/2 9' X 12' 1/2 12' X 1/2 648' X 150' 1/2
MAXIMUM BUILDING COVER: 100,000 MAXIMUM RETAIL COVER: 100,000 FREIGHT YARD: 1 STREET SIDE YARD: RETAILER SIDE YARD: TRUCK SIDE YARD: NATURAL AREA: BUILDING HEIGHT:	40' X 60' 1/2 47% 10' X 16' 1/2 10' X 22' 1/2 9' X 12' 1/2 12' X 1/2 648' X 150' 1/2

[illegible]

P.U.D. APPROVAL

CASE NO. 10-04-0008

RECEIVED AT NEW YORK ON
JANUARY 14 1964

UNION OFFICERS, 3 OF THE CITY OF ALBANY AND OFFICERS OF THE
CITY

For the CONFERENCE INFORMATION

[illegible][illegible]

ST. DAVID'S MEDICAL CENTER

CHILD GENERAL DEVELOPMENT

INTERNATIONAL JOURNAL OF

NY 100

SINCE 1960, THE COMPANY HAS

IMPROVING TRAINING

100

213

1. The first step is to identify the problem or question that needs to be answered. This involves understanding the context and the specific requirements of the task.

100

[illegible]

1. **Introduction**
 2. **Background**
 3. **Methodology**
 4. **Results**
 5. **Discussion**
 6. **Conclusion**
 7. **References**
 8. **Appendix**
 9. **Figure 1**
 10. **Figure 2**
 11. **Figure 3**
 12. **Figure 4**
 13. **Figure 5**
 14. **Figure 6**
 15. **Figure 7**
 16. **Figure 8**
 17. **Figure 9**
 18. **Figure 10**
 19. **Figure 11**
 20. **Figure 12**
 21. **Figure 13**
 22. **Figure 14**
 23. **Figure 15**
 24. **Figure 16**
 25. **Figure 17**
 26. **Figure 18**
 27. **Figure 19**
 28. **Figure 20**
 29. **Figure 21**
 30. **Figure 22**
 31. **Figure 23**
 32. **Figure 24**
 33. **Figure 25**
 34. **Figure 26**
 35. **Figure 27**
 36. **Figure 28**
 37. **Figure 29**
 38. **Figure 30**
 39. **Figure 31**
 40. **Figure 32**
 41. **Figure 33**
 42. **Figure 34**
 43. **Figure 35**
 44. **Figure 36**
 45. **Figure 37**
 46. **Figure 38**
 47. **Figure 39**
 48. **Figure 40**
 49. **Figure 41**
 50. **Figure 42**
 51. **Figure 43**
 52. **Figure 44**
 53. **Figure 45**
 54. **Figure 46**
 55. **Figure 47**
 56. **Figure 48**
 57. **Figure 49**
 58. **Figure 50**
 59. **Figure 51**
 60. **Figure 52**
 61. **Figure 53**
 62. **Figure 54**
 63. **Figure 55**
 64. **Figure 56**
 65. **Figure 57**
 66. **Figure 58**
 67. **Figure 59**
 68. **Figure 60**
 69. **Figure 61**
 70. **Figure 62**
 71. **Figure 63**
 72. **Figure 64**
 73. **Figure 65**
 74. **Figure 66**
 75. **Figure 67**
 76. **Figure 68**
 77. **Figure 69**
 78. **Figure 70**
 79. **Figure 71**
 80. **Figure 72**
 81. **Figure 73**
 82. **Figure 74**
 83. **Figure 75**
 84. **Figure 76**
 85. **Figure 77**
 86. **Figure 78**
 87. **Figure 79**
 88. **Figure 80**
 89. **Figure 81**
 90. **Figure 82**
 91. **Figure 83**
 92. **Figure 84**
 93. **Figure 85**
 94. **Figure 86**
 95. **Figure 87**
 96. **Figure 88**
 97. **Figure 89**
 98. **Figure 90**
 99. **Figure 91**
 100. **Figure 92**
 101. **Figure 93**
 102. **Figure 94**
 103. **Figure 95**
 104. **Figure 96**
 105. **Figure 97**
 106. **Figure 98**
 107. **Figure 99**
 108. **Figure 100**
 109. **Figure 101**
 110. **Figure 102**
 111. **Figure 103**
 112. **Figure 104**
 113. **Figure 105**
 114. **Figure 106**
 115. **Figure 107**
 116. **Figure 108**
 117. **Figure 109**
 118. **Figure 110**
 119. **Figure 111**
 120. **Figure 112**
 121. **Figure 113**
 122. **Figure 114**
 123. **Figure 115**
 124. **Figure 116**
 125. **Figure 117**
 126. **Figure 118**
 127. **Figure 119**
 128. **Figure 120**
 129. **Figure 121**
 130. **Figure 122**
 131. **Figure 123**
 132. **Figure 124**
 133. **Figure 125**
 134. **Figure 126**
 135. **Figure 127**
 136. **Figure 128**
 137. **Figure 129**
 138. **Figure 130**
 139. **Figure 131**
 140. **Figure 132**
 141. **Figure 133**
 142. **Figure 134**
 143. **Figure 135**
 144. **Figure 136**
 145. **Figure 137**
 146. **Figure 138**
 147. **Figure 139**
 148. **Figure 140**
 149. **Figure 141**
 150. **Figure 142**
 151. **Figure 143**
 152. **Figure 144**
 153. **Figure 145**
 154. **Figure 146**
 155. **Figure 147**
 156. **Figure 148**
 157. **Figure 149**
 158. **Figure 150**
 159. **Figure 151**
 160. **Figure 152**
 161. **Figure 153**
 162. **Figure 154**
 163. **Figure 155**
 164. **Figure 156**
 165. **Figure 157**
 166. **Figure 158**
 167. **Figure 159**
 168. **Figure 160**
 169. **Figure 161**
 170. **Figure 162**
 171. **Figure 163**
 172. **Figure 164**
 173. **Figure 165**
 174. **Figure 166**
 175. **Figure 167**
 176. **Figure 168**
 177. **Figure 169**
 178. **Figure 170**
 179. **Figure 171**
 180. **Figure 172**
 181. **Figure 173**
 182. **Figure 174**
 183. **Figure 175**
 184. **Figure 176**
 185. **Figure 177**
 186. **Figure 178**
 187. **Figure 179**
 188. **Figure 180**
 189. **Figure 181**
 190. **Figure 182**
 191. **Figure 183**
 192. **Figure 184**
 193. **Figure 185**
 194. **Figure 186**
 195. **Figure 187**
 196. **Figure 188**
 197. **Figure 189**
 198. **Figure 190**
 199. **Figure 191**
 200. **Figure 192**
 201. **Figure 193**
 202. **Figure 194**
 203. **Figure 195**
 204. **Figure 196**
 205. **Figure 197**
 206. **Figure 198**
 207. **Figure 199**
 208. **Figure 200**
 209. **Figure 201**
 210. **Figure 202**
 211. **Figure 203**
 212. **Figure 204**
 213. **Figure 205**
 214. **Figure 206**
 215. **Figure 207**
 216. **Figure 208**
 217. **Figure 209**

PLANNING COMMISSION PROPOSAL

Graeber, Simmons & Cowan, Inc.
Austin

Planning
Architecture
Interior Architecture

JANUARY 02, 2007

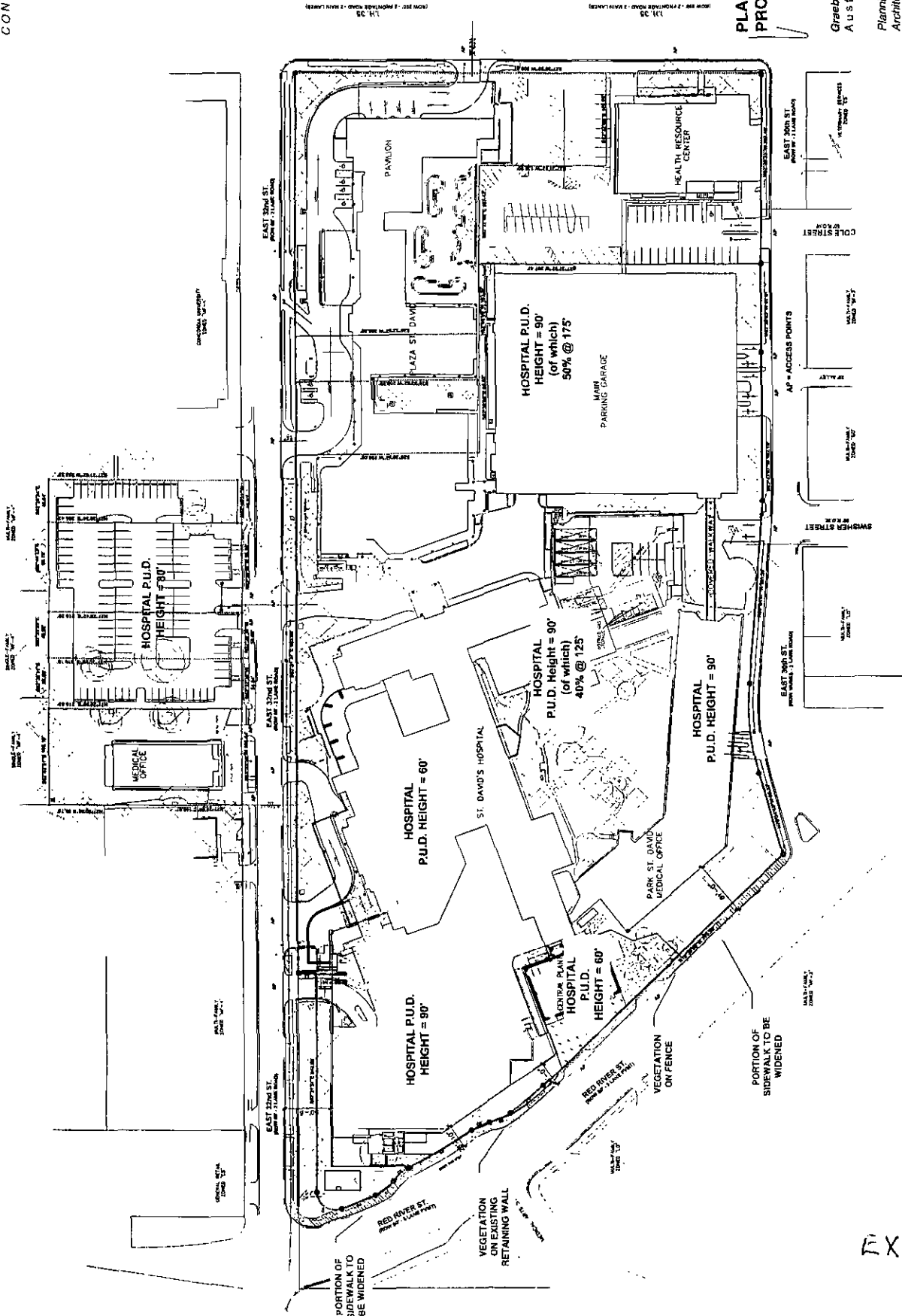


EXHIBIT D