



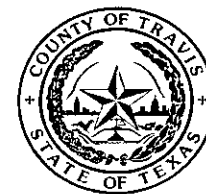
## Austin/Travis County Health and Human Services Department

*The role of public health is to*

PROMOTE community wide wellness,

PREVENT disease and

PROTECT the community from infectious diseases,  
environmental hazards and epidemics



4/12/07  
#33

---

# Day Labor South Site Recommendation

## City Council Meeting

April 12, 2007

David Lurie, Director

# Background

---

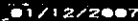
- **First Day Labor site established at 51<sup>st</sup> and I-35 in 1999**
- **Over 22,000 placements in FY2005-06**
- **Funding for second day labor site in South Austin included in FY2006-07 budget**
- **10/19/06 Council requested that the Day Labor Community Advisory Committee (DLCAC) review potential sites.**
- **2/2/07 DLCAC provided assessment of 5 sites**
- **Staff makes recommendation based on this review process**

# **Selection Criteria**

---

- **Proximity to Neighborhoods**
- **Access/Visibility**
- **Parking/Capital Metro**
- **Labor Supply**
- **Physical Layout**
- **Overall Assessment**

**Figure 1**

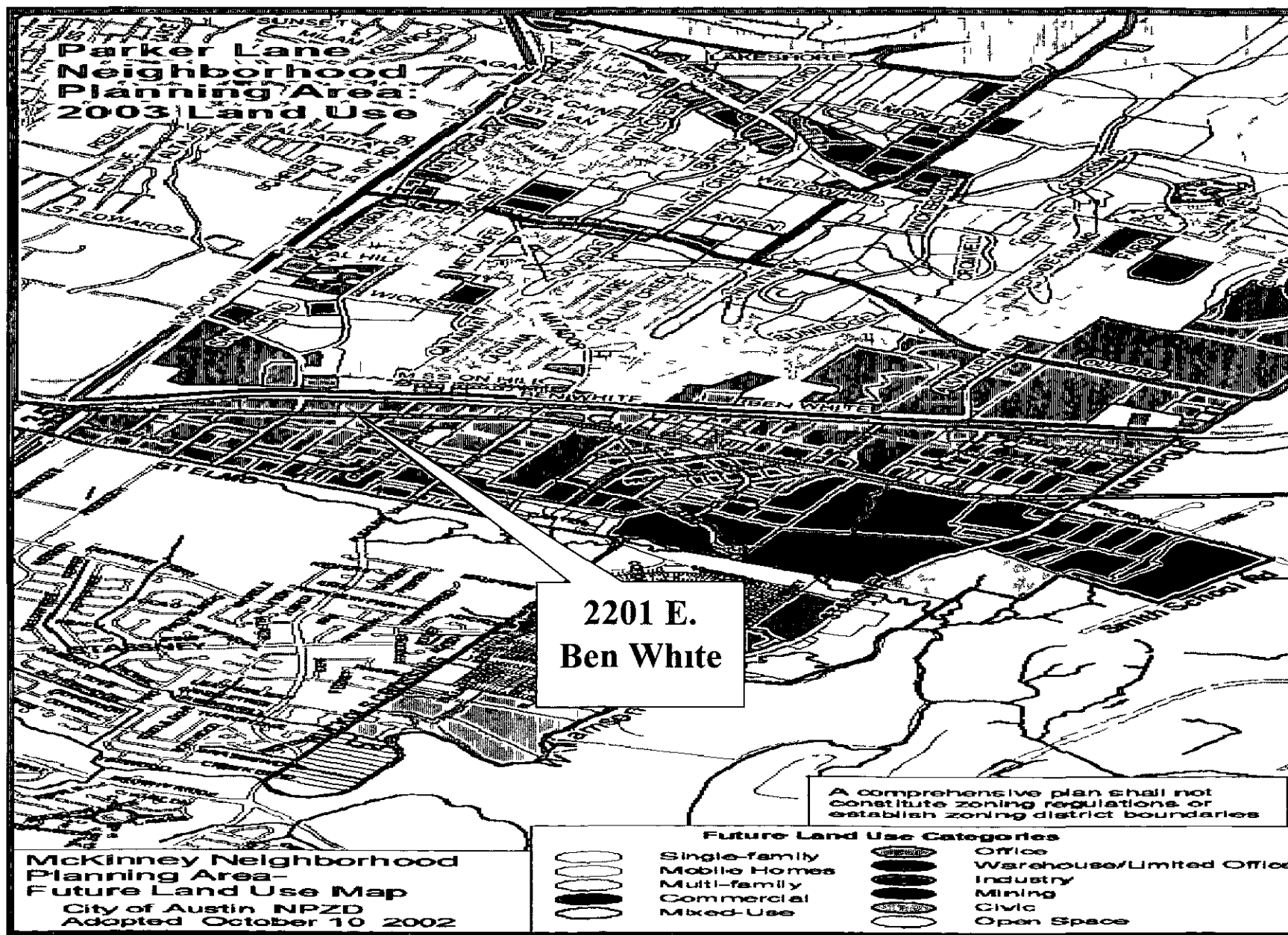


# **Staff Recommendation**

---

## **2201 E. Ben White Blvd**

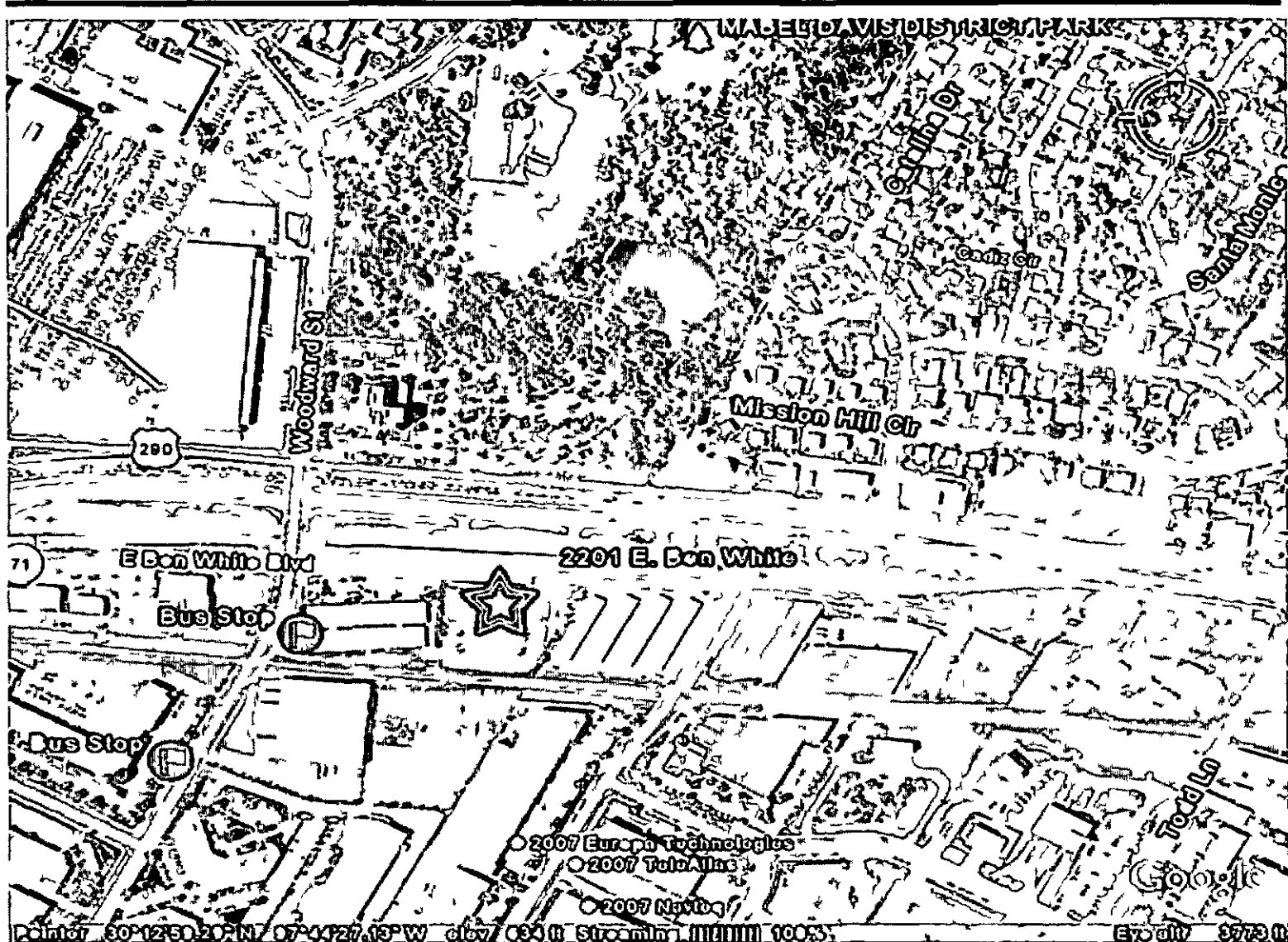
- **Commercial and industrial buffers**
- **Good highway access for employers and space for on-site traffic flow**
- **Efficient Cap Metro access from Riverside area and Dove Springs**
- **New Cap Metro Hub will be located fairly close**
- **Limited up front cost to use the covered patio for day labor program “as is”**



# Aerial View of Vicinity

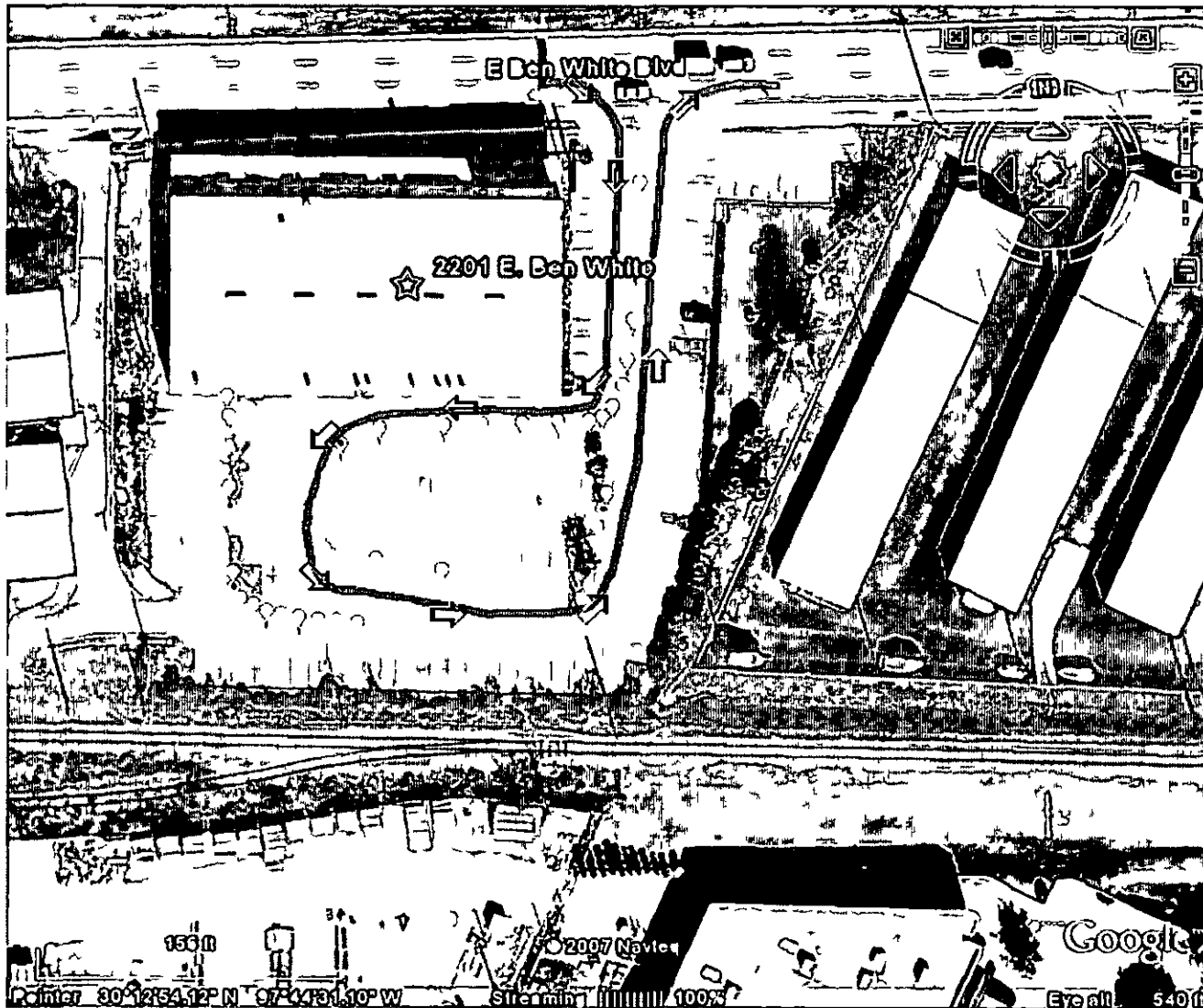


# South Site





# Traffic Flow



Traffic  
Flow



Proposed  
Fence

# Bus Routes



14

**TRAVIS  
HEIGHTS**

27

**DOVE  
SPRINGS**

320

**ST JOHNS**

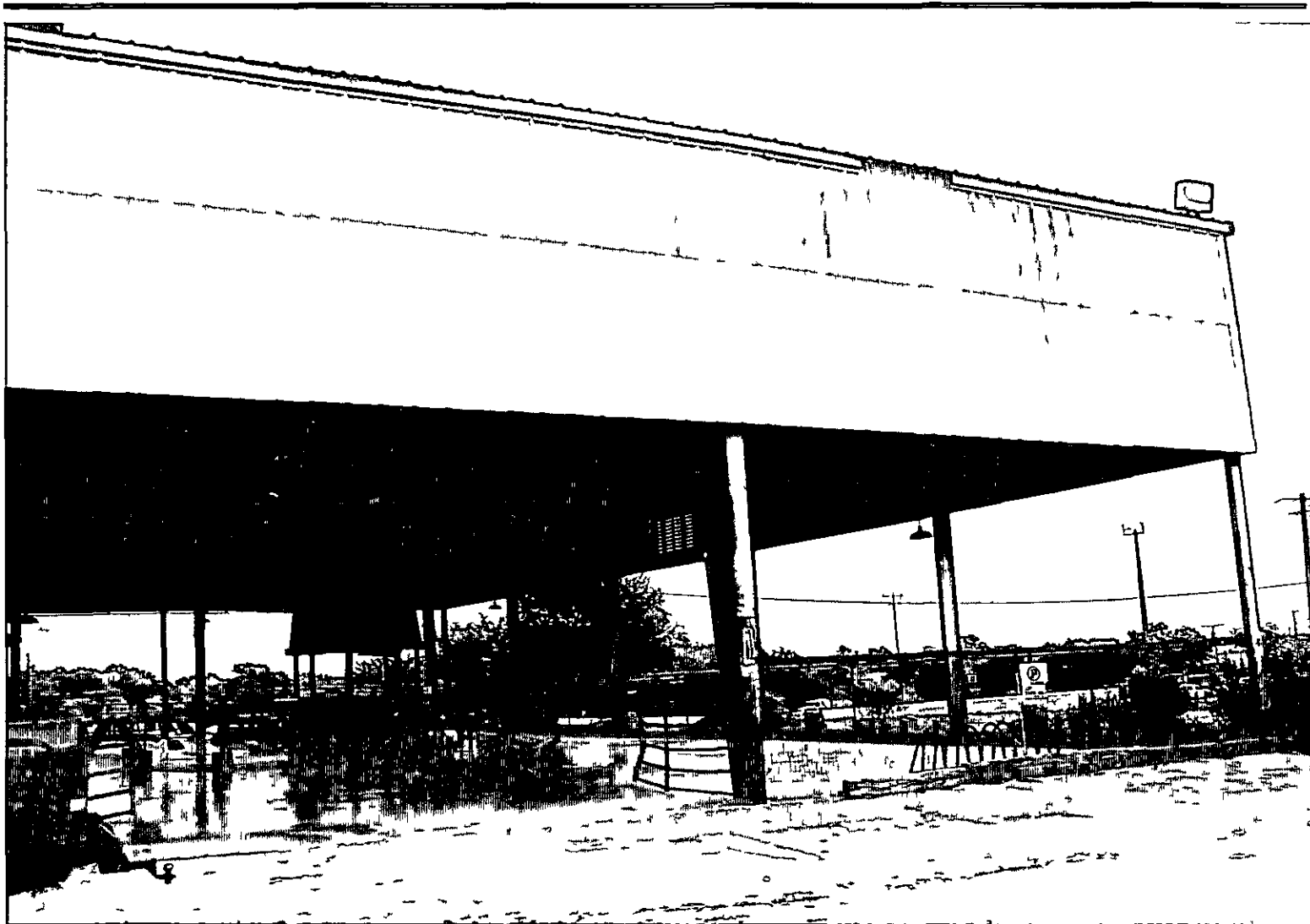
328

**BEN  
WHITE**

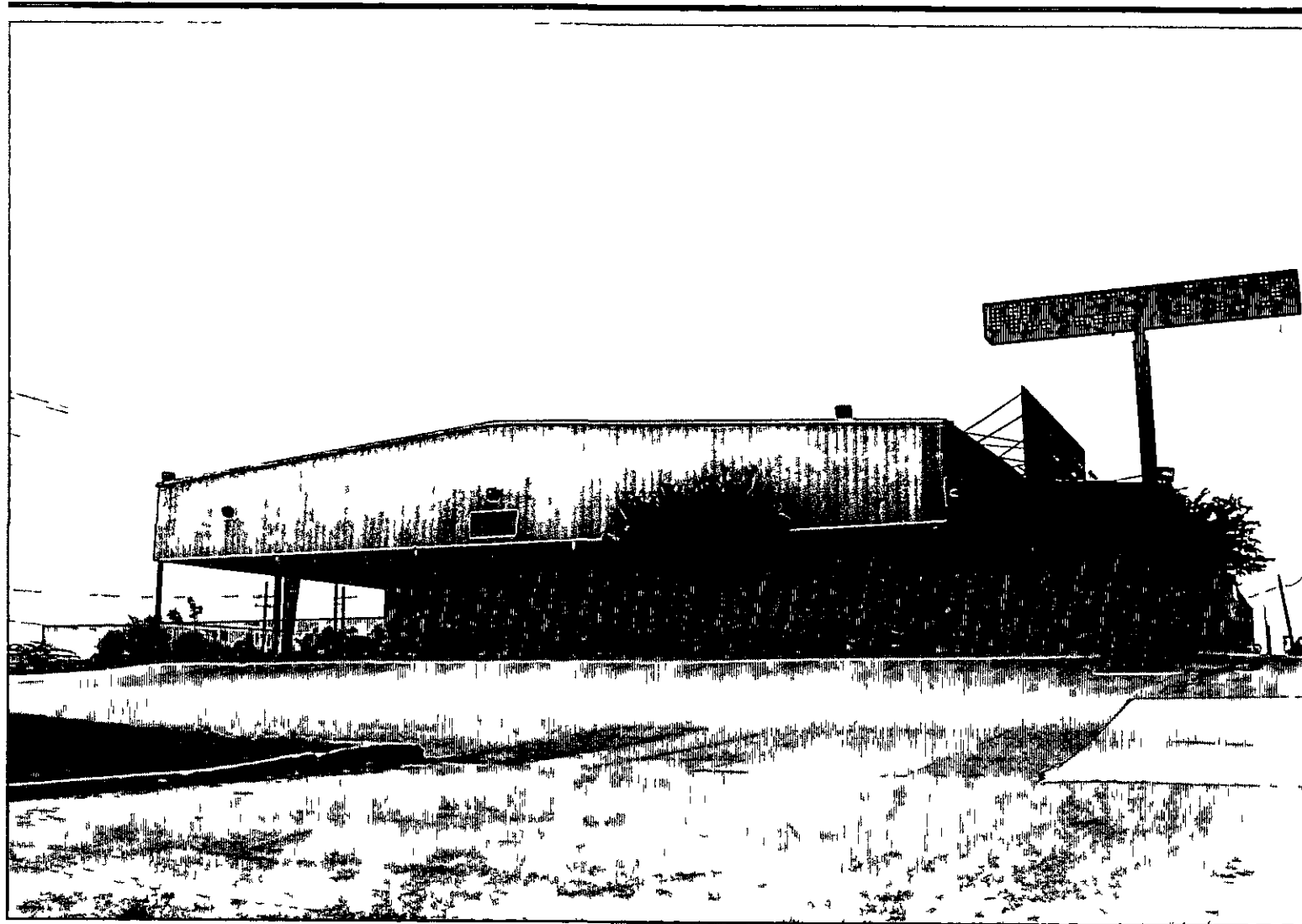
# South Site



# South Site



# South Site



# South Site

---



# **Next Steps**

---

- **Public Hearing 4/12/2007**
- **Execute one-year lease agreement with renewal options**
- **Commence building modifications, restroom access**
- **Develop and implement operational plan**
- **Open South Day Labor Center at earliest possible date**