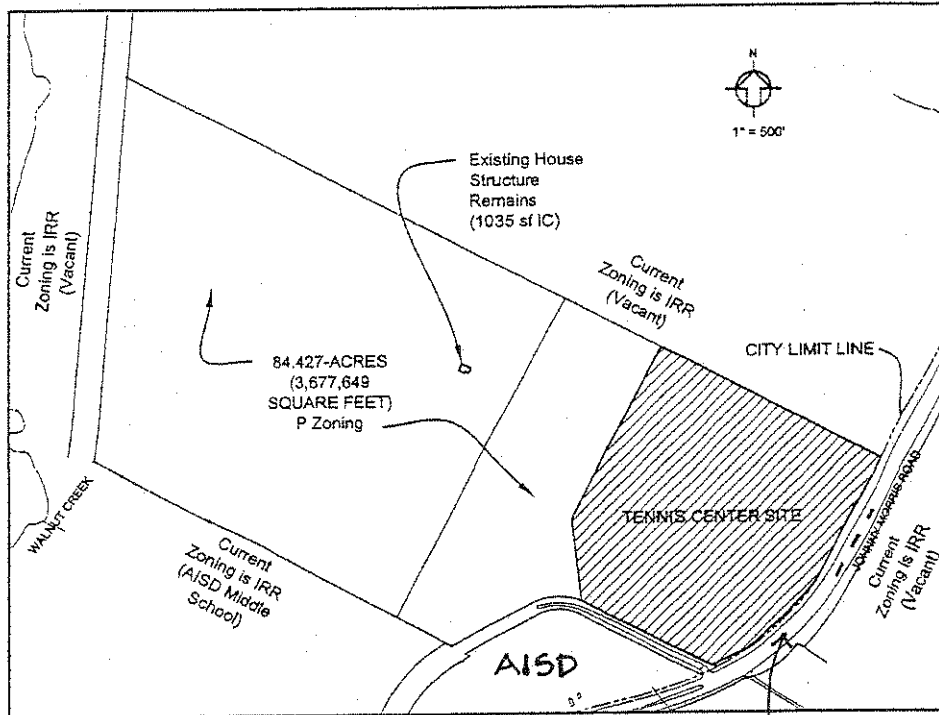


AUSTIN TENNIS CENTER



Map Notes:

1. Mapsco reference for this site is P-26 on page 557.
2. Water pressure zone for this site is North, Reduced Area.
3. Pro Shop construction is building type III, requiring a minimum fire flow of 1,500 gpm.
4. Water and wastewater SERs have been approved and are shown on this sheet.

LOCATION MAP