

**ORDINANCE NO. 20071101-060**

**AN ORDINANCE ADJUSTING AND ALTERING THE FULL PURPOSE BOUNDARY LIMITS OF THE CITY OF AUSTIN BY TRANSFERRING APPROXIMATELY 1 ACRE OF LAND FROM THE CITY OF CEDAR PARK TO THE CITY OF AUSTIN IN ACCORDANCE WITH TEXAS LOCAL GOVERNMENT CODE SECTION 43.031.**

**BE IT ORDAINED BY THE CITY COUNCIL OF THE CITY OF AUSTIN:**

**PART 1.** The Council finds that:

- (A) Texas Local Government Code Section 43.031 authorizes adjacent cities to make mutually agreeable changes to their boundaries of areas that are less than 1,000 feet in width.
- (B) The proposed boundary adjustment will bring the entire intersection of Lakeline Boulevard and U.S. Hwy 183 into Austin's full purpose city limits. It will eliminate potential confusion over jurisdiction related to emergency response, enforcement of public safety regulations and maintenance of signs, signals, and striping.
- (C) The City of Austin has requested the boundary adjustment approved by this ordinance, and the City of Cedar Park has agreed to it.

**PART 2.** The full purpose corporate limits of the City of Austin are amended to include the following tract:

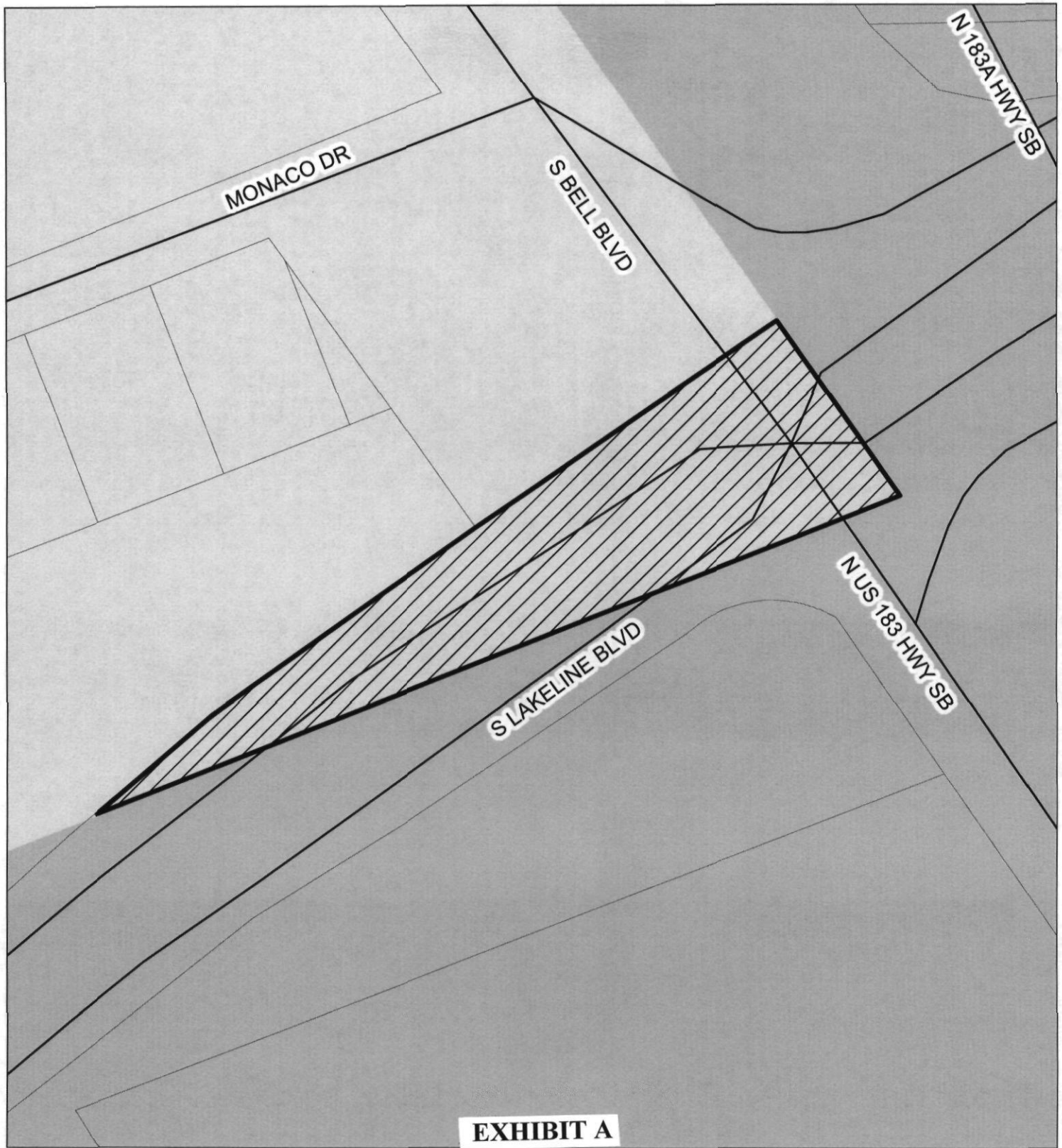
A tract of land containing approximately 1 acre of land out of the Rachel Saul Survey, Abstract 551 in Williamson County, Texas, said 1 acre of land being more particularly described in Exhibit A.

**PART 3.** This ordinance takes effect on November 12, 2007.

**PASSED AND APPROVED**

§  
§  
§  
\_\_\_\_ November 1 \_\_\_\_\_, 2007      \_\_\_\_\_  
Will Wynn  
Mayor

**APPROVED:** \_\_\_\_\_ **ATTEST:** \_\_\_\_\_  
David Allan Smith      Shirley A. Gentry  
City Attorney      City Clerk



## Proposed Boundary Adjustment with Cedar Park

Approximately 1 Acre

### Legend



Boundary Adjustment: Cedar Park to Austin



Lot Line



Street



Austin Full Purpose



Cedar Park Full Purpose



City of Austin NPZD  
J. Chuter  
August 31, 2007

C7b-07-001

Area to be annexed.

Approximately 1 acre of  
land situated in the Rachel  
Saul Survey, Abstract 551  
in Williamson County,  
Texas.

(Portion of Lakeline  
Boulevard & U.S. Highway  
183)

#### LEGAL DESCRIPTION

LEGAL DESCRIPTION FOR A TRACT OF LAND  
CONTAINING APPROXIMATELY 1 ACRE OF LAND  
OUT OF THE RACHEL SAUL SURVEY, ABSTRACT  
551 IN WILLIAMSON COUNTY, TEXAS, OF  
WHICH APPROXIMATELY 1 ACRE OF LAND IS  
TO BE TAKEN INTO AND MADE A PART OF THE  
CITY OF AUSTIN, SAID APPROXIMATELY 1  
ACRE OF LAND BEING MORE PARTICULARLY  
DESCRIBED AS FOLLOWS:

BEGINNING at a point within the present right-of-way  
of U.S. Highway No. 183 and in the present corporate limit  
line of the City of Cedar Park, said line being the  
northerly line of that certain tract of land described by  
metes and bounds in Ordinance No. 81-16 of said City of  
Cedar Park at the intersection of the northerly line of  
present corporate limit line of the City of Austin as  
adopted by Ordinance 841115-VV (Case No.C7a-84-017) and the  
westerly line of present corporate limit line of the City  
of Austin as adopted by Ordinance 940908-H (Case No.C7a-94-  
003), for the southeast corner of the herein described  
tract of land;

THENCE, in a southwesterly direction with the present  
corporate limit line of the City of Cedar Park as described  
by metes and bounds in Ordinance No. 81-16, being the  
northerly line of the present corporate limit line of the  
City of Austin as adopted by Ordinance 841115-VV (Case  
No.C7a-84-017) to an angle point in the present

southwesterly right-of-way line of U.S. Highway No. 183, said angle point as referenced in said metes and bounds of Ordinance No. 81-16, for an angle point of the herein described tract of land;

THENCE, continuing in a southwesterly direction with the present corporate limit line of the City of Cedar Park as described by metes and bounds in Ordinance No. 81-16, being in part along the northerly line of the present corporate limit line of the City of Austin as adopted by Ordinance 841115-VV (Case No.C7a-84-017), and in part along the northerly line of the present corporate limit line of the City of Austin as adopted by Ordinance 940908-G (Case No.C7a-94-002) to a point in the present northerly right-of-way line of that certain called 7.68 acre tract of land (Lakeline Boulevard) conveyed to Williamson County by deed recorded in Volume 1522, Page 838 of the Official Records of Williamson County, Texas, for the westerly corner of the herein described tract of land;

THENCE, in a northeasterly direction with the proposed corporate limit line of the City of Austin, along the present north line of the said 7.68 acre tract (Lakeline Boulevard) to a point of curvature at the most easterly point of a tangent line as referenced by the call in said deed as N 54°28'55" E - 245.62', for a corner of the herein described tract;

THENCE, continuing in a northeasterly direction with the proposed corporate limit line of the City of Austin, along the northeasterly prolongation of said tangent line to a point in the present corporate limit line of the City of Cedar Park, same being in the present corporate limit line of the City of Austin as adopted by Ordinance 841115-VV (Case No.C7a-84-017), also being within the present right-of-way of U.S. Highway No. 183, for the northeast corner of the herein described tract;

THENCE, in a southeasterly direction with the present corporate limit line of the City of Austin as adopted by

Ordinance 841115-VV (Case No.C7a-84-017) to the point of beginning.

"This document was prepared under 22 TAC 663.21, does not reflect the results of an on the ground survey, and is not to be used to convey or establish interests in real property except those rights and interests implied or established by the creation or reconfiguration of the boundary of the political subdivision for which it was prepared".

LEGAL DESCRIPTION: John E. Moore  
10-26-2007

 10-26-2007

APPROVED: John E. Moore, RPLS NO. 4520  
Engineering Services Division  
Department of Public Works  
City of Austin

REFERENCES

WCAD Maps 4-6618 & 4-6628  
Austin Grid F-40