

**Professional Land Surveying, Inc.
Surveying and Mapping**

Office: 512-443-1724
Fax: 512-441-6987

2807 Manchaca Road
Building One
Austin, Texas 78704

**320.575 ACRES
PROPOSED VILLAGE OF VOLENTE BOUNDARY**

A DESCRIPTION OF 320.575 ACRES OUT OF THE RUSK TRANSPORTATION CO. SURVEY NO. 81, THE J. C. TOUNGATE SURVEY NO. 82, AND THE S.C. ROBERTSON SURVEY NO. 434, ALL IN TRAVIS COUNTY, TEXAS, BEING A PORTION OF AN 826.756 ACRE TRACT DESCRIBED IN A SPECIAL WARRANTY DEED TO GRASON VOLENTE INVESTMENTS LTD., DATED MARCH 1, 2004 AND RECORDED UNDER DOCUMENT NO. 2004047246 OF THE OFFICIAL PUBLIC RECORDS OF TRAVIS COUNTY, TEXAS, A PORTION OF AN 1103.696 ACRE TRACT DESCRIBED IN A SPECIAL WARRANTY DEED WITH VENDOR'S LIEN TO THE VOLENTE GROUP OF TEXAS, LTD., DATED MAY 29, 1996 AND RECORDED IN VOLUME 12702, PAGE 811 OF THE REAL PROPERTY RECORDS OF TRAVIS COUNTY, TEXAS, ALL OF A 15.32 ACRE TRACT DESCRIBED IN A SPECIAL WARRANTY DEED TO THE VOLENTE GROUP OF TEXAS, LTD., DATED MAY 10, 2004 AND RECORDED UNDER DOCUMENT NO. 2004094369 OF THE OFFICIAL PUBLIC RECORDS OF TRAVIS COUNTY, TEXAS, ALL OF A 6.05 ACRE TRACT DESCRIBED IN A SPECIAL WARRANTY DEED TO GRASON VOLENTE INVESTMENTS, LTD., DATED MAY 10, 2004 AND RECORDED UNDER DOCUMENT NO. 2004094377 OF THE OFFICIAL PUBLIC RECORDS OF TRAVIS COUNTY, TEXAS, ALL OF A 0.56 ACRE TRACT DESCRIBED IN A SPECIAL WARRANTY DEED TO EDWARD F. HAMEL, DATED MAY 25, 2004 AND RECORDED UNDER DOCUMENT NO. 2004106277 OF THE OFFICIAL PUBLIC RECORDS OF TRAVIS COUNTY, TEXAS, ALL OF A 2.500 ACRE TRACT DESCRIBED IN A GENERAL WARRANTY DEED TO CHARLES LEE DWYER AND LO R. KIMBRO, DATED JUNE 10, 2005 AND RECORDED UNDER DOCUMENT NO. 2005103984 OF THE OFFICIAL PUBLIC RECORDS OF TRAVIS COUNTY, TEXAS, A PORTION OF A 34.621 ACRE TRACT DESCRIBED IN A GENERAL WARRANTY DEED TO GRASON VOLENTE INVESTMENTS, LTD., DATED JUNE 10, 2005 AND RECORDED UNDER DOCUMENT NO. 2005103984 OF THE OFFICIAL PUBLIC RECORDS OF TRAVIS COUNTY, TEXAS, AND ALL OF LOT 20, LAKE TRAVIS SUBDIVISION NO. 5, A SUBDIVISION OF RECORD IN VOLUME 4, PAGE 81 OF THE PLAT RECORDS OF TRAVIS COUNTY, TEXAS; SAID 320.575 ACRE TRACT BEING MORE PARTICULARLY DESCRIBED BY METES AND BOUNDS AS FOLLOWS:

BEGINNING at a 1/2" rebar with cap found in the east right-of-way line of Lookover Street (50' right-of-way), same being the north corner of Lot 79, Lake Travis Subdivision No. 1, a subdivision of record in Volume 4, Page 41 of the Plat Records of Travis County, Texas, also being the west corner of the said 826.756 acre tract;

THENCE North 25°45'19" East, with the east right-of-way line of Lookover Street, same being the west line of the 826.756 acre tract, a distance of 322.54 feet to a 1/2" rebar with cap found in the southeast right-of-way line of Lime Creek Road (60' right-of-way), described on a plat of record in Volume 4, Page 85 of the Plat Records of Travis County, Texas;

THENCE with the southeast right-of-way line of Lime Creek Road and continuing with the west line of line of the 826.756 acre tract, the following two (2) courses:

1. North 69°15'19" East, a distance of 403.22 feet to a 1/2" rebar with cap found;
2. North 83°47'56" East, a distance of 264.60 feet to a 1/2" rebar found for the west corner of a 4.75 acre tract described in Volume 12617, Page 1874 of the Real Property Records of Travis County, Texas;

THENCE over and across the 826.756 acre tract, the following eighty (80) courses and distances:

1. South 04°29'08" East, a distance of 150.06 feet to a point;
2. South 56°30'47" East, a distance of 94.54 feet to a point;
3. South 56°08'12" East, a distance of 102.45 feet to a point;
4. South 51°39'02" East, a distance of 122.06 feet to a point;
5. South 41°32'17" East, a distance of 332.88 feet to a point;
6. South 48°41'52" East, a distance of 298.56 feet to a point;
7. South 72°37'39" East, a distance of 86.89 feet to a point;
8. South 89°01'53" East, a distance of 155.65 feet to a point;
9. North 72°27'30" East, a distance of 147.88 feet to a point;
10. North 75°34'06" East, a distance of 152.87 feet to a point;
11. North 50°20'31" East, a distance of 169.00 feet to a point;
12. North 43°42'12" East, a distance of 194.34 feet to a point;
13. North 42°38'22" East, a distance of 153.01 feet to a point;
14. North 44°31'50" East, a distance of 623.90 feet to a point;

15. North 32°02'35" East, a distance of 189.46 feet to a point;
16. North 46°30'37" East, a distance of 360.13 feet to a point;
17. North 23°51'50" East, a distance of 100.02 feet to a point;
18. North 00°04'08" East, a distance of 225.24 feet to a point;
19. North 01°51'10" East, a distance of 100.36 feet to a point;
20. North 06°52'13" West, a distance of 82.17 feet to a point;
21. North 16°01'03" West, a distance of 89.79 feet to a point;
22. North 18°12'25" West, a distance of 621.95 feet to a point;
23. North 00°40'15" West, a distance of 189.29 feet to a point;
24. North 41°35'55" East, a distance of 164.15 feet to a point;
25. North 70°37'06" East, a distance of 76.54 feet to a point;
26. North 70°36'21" East, a distance of 402.09 feet to a point;
27. North 70°30'51" East, a distance of 101.94 feet to a point;
28. North 70°28'38" East, a distance of 25.01 feet to a point;
29. North 70°21'44" East, a distance of 100.03 feet to a point;
30. North 70°19'41" East, a distance of 465.93 feet to a point;
31. North 75°16'22" East, a distance of 201.36 feet to a point;
32. South 66°16'27" East, a distance of 418.27 feet to a point;
33. South 46°12'12" East, a distance of 231.05 feet to a point;
34. South 18°33'45" East, a distance of 218.10 feet to a point;
35. South 13°50'43" West, a distance of 719.02 feet to a point;
36. South 33°17'53" West, a distance of 475.09 feet to a point;

37. North $76^{\circ}15'07''$ West, a distance of 300.63 feet to a point;
38. North $66^{\circ}00'35''$ West, a distance of 140.38 feet to a point;
39. South $25^{\circ}30'02''$ West, a distance of 219.05 feet to a point;
40. South $11^{\circ}45'10''$ West, a distance of 454.66 feet to a point of curvature of a non-tangent curve to the right;
41. Along a curve to the right, having a radius of 235.00 feet, an arc length of 298.53, and a chord which bears South $63^{\circ}06'46''$ East, a distance of 278.86 feet;
42. South $26^{\circ}43'14''$ East, a distance of 119.57 feet to a point of curvature;
43. Along a curve to the left, having a radius of 25.00 feet, an arc length of 23.55 feet, and a chord which bears South $53^{\circ}42'17''$ East, a distance of 22.69 feet to a point of curvature to the right;
44. Along a curve to the right, having a radius of 60.00 feet, an arc length of 103.03 feet, and a chord which bears South $26^{\circ}43'14''$ East, a distance of 97.04 feet to a point of curvature to the left;
45. Along a curve to the left, having a radius of 25.87 feet, an arc length of 21.02 feet, and a chord which bears South $03^{\circ}30'29''$ West, a distance of 20.45 feet to a point of curvature to the left;
46. Along a curve to the left, having a radius of 155.00 feet, an arc length of 111.58 feet, and a chord which bears South $62^{\circ}28'07''$ East, a distance of 181.11 feet to a point;
47. North $81^{\circ}47'00''$ East, a distance of 8.06 feet to a point of curvature of a non-tangent curve to the right;
48. Along a curve to the right, having a radius of 525.00 feet, an arc length of 132.32 feet, and a chord which bears North $89^{\circ}00'14''$ East, a distance of 131.97 feet to a point;
49. South $83^{\circ}46'32''$ East, a distance of 17.80 feet to a point of curvature of a non-tangent curve to the left;
50. Along a curve to the left, having a radius of 475.00 feet, an arc length of 206.87 feet, and a chord which bears North $83^{\circ}44'51''$ East, a distance of 205.24 feet to a point;

51. North $71^{\circ}18'01''$ East, a distance of 34.24 feet to a point of curvature of a non-tangent curve to the right;
52. Along a curve to the right, having a radius of 60.00 feet, an arc length of 63.76 feet, and a chord which bears South $76^{\circ}53'33''$ East, a distance of 60.80 feet to a point;
53. North $49^{\circ}43'10''$ East, a distance of 251.28 feet to a point;
54. South $16^{\circ}01'36''$ East, a distance of 204.36 feet to a point;
55. South $17^{\circ}17'05''$ West, a distance of 224.96 feet to a point;
56. South $77^{\circ}27'32''$ West, a distance of 170.68 feet to a point;
57. South $83^{\circ}09'06''$ West, a distance of 264.25 feet to a point;
58. North $78^{\circ}38'42''$ West, a distance of 57.41 feet to a point;
59. North $74^{\circ}30'45''$ West, a distance of 314.54 feet to a point;
60. North $56^{\circ}56'06''$ West, a distance of 169.81 feet to a point;
61. North $36^{\circ}28'42''$ West, a distance of 136.40 feet to a point;
62. North $40^{\circ}58'04''$ West, a distance of 117.00 feet to a point;
63. North $18^{\circ}43'29''$ West, a distance of 119.31 feet to a point;
64. South $41^{\circ}30'42''$ West, a distance of 364.27 feet to a point of curvature;
65. Along a curve to the left having a radius of 2791.92 feet, an arc length of 257.45 feet and chord which bears South $36^{\circ}04'09''$ West, a distance of 257.36 feet to a point;
66. South $23^{\circ}14'29''$ East, a distance of 191.97 feet to a point;
67. South $26^{\circ}09'00''$ East, a distance of 116.46 feet to a point;
68. South $19^{\circ}39'47''$ East, a distance of 116.12 feet to a point;
69. South $16^{\circ}43'25''$ East, a distance of 116.77 feet to a point;
70. South $11^{\circ}18'58''$ East, a distance of 117.19 feet to a point;

- 71. South 03°40'02" East, a distance of 124.19 feet to a point;
- 72. South 03°15'20" West, a distance of 227.34 feet to a point;
- 73. South 10°05'58" West, a distance of 194.35 feet to a point;
- 74. South 04°22'07" West, a distance of 94.23 feet to a point;
- 75. South 02°00'33" East, a distance of 218.63 feet to a point;
- 76. South 07°25'36" East, a distance of 174.72 feet to a point;
- 77. South 07°48'46" East, a distance of 16.74 feet to a point;
- 78. North 89°09'58" East, a distance of 465.19 feet to a point;
- 79. South 31°54'47" East, a distance of 329.89 feet to a point;
- 80. South 04°37'34" West, a distance of 560.77 feet to a point in an east line of the 826.756 acre tract and west line of the 34.621 acre tract;

THENCE North 18°57'44" East, with an east line of the 826.756 acre tract and the west line of the 34.621 acre tract, a distance of 377.01 feet to a 1/2" rebar with cap found at an angle point in the east line of the 826.756 acre tract, same being the northwest corner of the said 34.621 acre tract;

THENCE South 61°43'17" East, with the common line of the 826.756 acre tract and the 34.621 acre tract for a distance of 930.41 feet to a 5/8" rebar found at the northeast corner of the 34.621 acre tract, same being a southeast corner of the 826.756 acre tract, also being an angle point in the west right-of-way line of Lake View Drive (right-of-way width varies), also being the west corner of a 1.35 acre tract described in a deed of record in Volume 3449, Page 1159 of the Deed Records of Travis County, Texas;

THENCE South 28°18'07" West, leaving the east line of the 826.756 acre tract, with west right-of-way line of Lake View Drive, same being the southeast line of the 34.621 acre tract and the southeast line of the said 2.500 acre tract, a distance of 1029.59 feet to a point for the north corner of a tract called 2.93 acres in a deed of record in Volume 12939, Page 463 of the Real Property Records of Travis County, Texas, being a portion of a 600.06 acre tract described in a deed of record in Volume 658, Page 57 of the Deed Records of Travis County, Texas;

THENCE North 84°44'28" West, crossing the 34.621 acre tract, a distance of 802.89 feet to a 1/2" rebar found at an angle point in the west line of the 34.621 acre tract, same being an angle point in the east line of the 826.756 acre tract;

THENCE South 05°02'02" West, with the west line of the 34.621 acre tract, same being the east line of the 826.756 acre tract and the east line of the said 0.56 acre tract, a distance of 827.99 feet to a 3/4" iron pipe found at the southeast corner of the 826.756 acre tract, same being the southeast corner of the said 0.56 acre tract, also being the southwest corner of the 34.621 acre tract, also being in the north right-of-way line of F.M. 2769 (Anderson Mill Road, 100' right-of-way as per state map, no TxDOT monumentation found);

THENCE with the north right-of-way line of F.M. 2769, same being the south line of the 826.756 acre tract and the south line of the 0.56 acre tract, the following two (2) courses and distances:

1. South 87°11'54" West, a distance of 183.63 feet to a 1/2" iron pipe found;
2. South 74°17'38" West, a distance of 339.10 feet to a 1/2" iron pipe found at the east corner of a 2.15 acre tract described in a deed of record in Volume 10408, Page 829 of the Real Property Records of Travis County, Texas;

THENCE North 61°50'06" West, with the southwest line of the 826.756 acre tract, same being the northeast line of the said 2.15 acre tract, a distance of 502.85 feet to a 1/2" iron pipe found at the north corner of the 2.15 acre tract, same being a southwest corner of the 826.756 acre tract, also being in the southeast line of a 0.629 acre tract, called vacated East Street, described in a deed of record under Document No. 1999158297 of the Official Public Records of Travis County, Texas;

THENCE North 28°41'11" East, continuing with the southwest line of the 826.756 acre tract, same being the southeast line of the said 0.629 acre tract, a distance of 99.62 feet to a 1/2" iron pipe found for the northeast corner of the 0.629 acre tract and the southeast corner of said Lot 20, Lake Travis Subdivision No. 5;

THENCE with the south lines of Lot 20, the north line of the 0.629 acre tract and north lines of Lot 19, Lake Travis Subdivision No. 5, the following two (2) courses;

1. North 61°27'31" West, passing at a distance of 49.97 feet a 1/2" rebar found for the northwest corner of the 0.629 acre tract and the northeast corner of said Lot 19 and continuing for a total distance of 473.74 feet to a 1/2" iron pipe found;
2. South 45°24'17" West, a distance of 381.74 feet to a 60D nail found for the westernmost corner of Lot 19 and northeast corner of Lot 18, Lake Travis Subdivision No. 5;

THENCE North 89°49'09" West, with a south line of Lot 20 and north line of said Lot 18, a distance of 103.98 feet to a 60D nail found for the northwest corner of Lot 18 and southeast corner of Lot 17, Lake Travis Subdivision No. 5;

THENCE North 15°43'38" West, with the west line of Lot 20 and the east line of said Lot 17, a distance of 233.52 feet to a 1/2" rebar found for the northeast corner of said Lot 17 and southeast termination of Hill Street (apparent 50' right-of-way);

THENCE North 12°41'05" East, with the west line of Lot 20 and said east termination of Hill Street, passing at a distance of 50.37 feet a 1/2" rebar found for the northeast termination of Hill Street and the southeast corner of Lot 16A, Replat of Lot 16, Lake Travis Subdivision No. 5, a subdivision of record in Document No. 200500218 of the Official Public Records of Travis County, Texas and continuing for a total distance of 352.19 feet to a 1/2" rebar found for the northeast corner of said Lot 16A and southeast corner of a 9.883 acre tract described in Document No. 2006028665 of the Official Public Records of Travis County, Texas and being a portion of Lot 15, Lake Travis Subdivision No. 5;

THENCE North 28°28'06" East, with the west line of Lot 20 and the east line of said 9.883 acre tract, a distance of 856.64 feet to a 1/2" iron pipe found for the northwest corner of Lot 20, the northeast corner of the 9.883 acre tract, also being the west corner of said 6.05 acre tract and also being the south corner of said 1103.696 acre tract, from which a 1/2" rebar with RJS cap found for the north corner of said 6.05 acre tract, being a southwest corner of said 15.32 acre tract, bears North 66°57'30" East, a distance of 611.30 feet;

THENCE North 61°23'25" West, with a southwest line of the 1103.696 acre tract and northeast line of said 9.883 acre tract, a distance of 375.24 feet to an 80D nail found for an angle point in the southwest line of the 1103.696 acre tract, the northeast line of the 9.883 acre tract and being the southeast corner of an 8.226 acre tract described in a deed of record in Volume 10976, Page 1471 of the Real Property Records of Travis County, Texas, being a portion of said Lot 15, a portion of Lot 10, Lake Travis Subdivision No. 5, and a portion of vacated Yantis Street, described in a deed of record in Volume 5945, Page 670 of the Deed Records of Travis County, Texas;


THENCE continuing with the south line of the 1103.696 acre tract, same being the southeast and northeast lines of the said 8.226 acre tract, the following two (2) courses and distances:

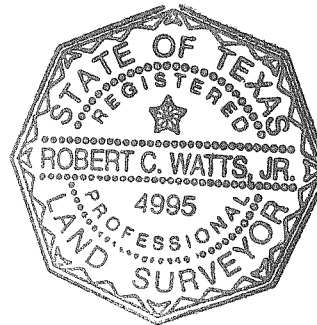
1. North 28°44'32" East, a distance of 375.53 feet to a 5/8" rebar found at the east corner of the 8.226 acre tract;
2. North 61°20'42" West, a distance of 655.30 feet to a 1/2" rebar found at the centerline of the north terminus of vacated Yantis Street, same being the southeast corner of a 46.96 acre tract described in a deed of record in Volume 12702, Page 1205 of the Real Property Records of Travis County, Texas;

THENCE continuing with the southwest line of the 110.3696 acre tract, same being the northeast line of the said 46.96 acre tract and said Lot 79, the following two (2) courses and distances:

1. North 04°32'53" East, a distance of 739.50 feet to a 1/2" rebar with cap found;
2. North 60°58'39" West, a distance of 2372.58 feet to the **POINT OF BEGINNING**, containing 320.575 acres of land, more or less.

Based on a survey made September 8, 2003. This description is made pursuant to Rule 663.21 of the Texas Board of Professional Land Surveying Standards for Political Subdivision Boundaries. Bearing Basis: Grid Azimuth for Texas Central Zone, 1983/93 HARN values from LCRA control network. Attachments: Drawing 239-001 MUD REV. Caps on rebars found are plastic, stamped "Chaparral Boundary".


Robert C. Watts, Jr.
Registered Professional Land Surveyor
State of Texas No. 4995

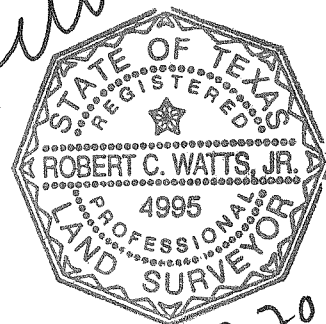


12.20.07

SKETCH TO ACCOMPANY A DESCRIPTION OF 320.575 ACRES OUT OF THE RUSK TRANSPORTATION CO. SURVEY NO. 81, THE J. C. TOUNGATE SURVEY NO. 82, AND THE S.C. ROBERTSON SURVEY NO. 434, ALL IN TRAVIS COUNTY, TEXAS, BEING A PORTION OF AN 826.756 ACRE TRACT DESCRIBED IN A SPECIAL WARRANTY DEED TO GRASON VOLENTE INVESTMENTS LTD., DATED MARCH 1, 2004 AND RECORDED UNDER DOCUMENT NO. 2004047246 OF THE OFFICIAL PUBLIC RECORDS OF TRAVIS COUNTY, TEXAS, A PORTION OF AN 1103.696 ACRE TRACT DESCRIBED IN A SPECIAL WARRANTY DEED WITH VENDOR'S LIEN TO THE VOLENTE GROUP OF TEXAS, LTD., DATED MAY 29, 1996 AND RECORDED IN VOLUME 12702, PAGE 811 OF THE REAL PROPERTY RECORDS OF TRAVIS COUNTY, TEXAS, ALL OF A 15.32 ACRE TRACT DESCRIBED IN A SPECIAL WARRANTY DEED TO THE VOLENTE GROUP OF TEXAS, LTD., DATED MAY 10, 2004 AND RECORDED UNDER DOCUMENT NO. 2004094369 OF THE OFFICIAL PUBLIC RECORDS OF TRAVIS COUNTY, TEXAS, ALL OF A 6.05 ACRE TRACT DESCRIBED IN A SPECIAL WARRANTY DEED TO GRASON VOLENTE INVESTMENTS, LTD., DATED MAY 10, 2004 AND RECORDED UNDER DOCUMENT NO. 2004094377 OF THE OFFICIAL PUBLIC RECORDS OF TRAVIS COUNTY, TEXAS, ALL OF A 0.56 ACRE TRACT DESCRIBED IN A SPECIAL WARRANTY DEED TO EDWARD F. HAMEL, DATED MAY 25, 2004 AND RECORDED UNDER DOCUMENT NO. 2004106277 OF THE OFFICIAL PUBLIC RECORDS OF TRAVIS COUNTY, TEXAS, ALL OF A 2.500 ACRE TRACT DESCRIBED IN A GENERAL WARRANTY DEED TO CHARLES LEE DWYER AND LO R. KIMBRO, DATED JUNE 10, 2005 AND RECORDED UNDER DOCUMENT NO. 2005103984 OF THE OFFICIAL PUBLIC RECORDS OF TRAVIS COUNTY, TEXAS, A PORTION OF A 34.621 ACRE TRACT DESCRIBED IN A GENERAL WARRANTY DEED TO GRASON VOLENTE INVESTMENTS, LTD., DATED JUNE 10, 2005 AND RECORDED UNDER DOCUMENT NO. 2005103984 OF THE OFFICIAL PUBLIC RECORDS OF TRAVIS COUNTY, TEXAS, AND ALL OF LOT 20, LAKE TRAVIS SUBDIVISION NO. 5, A SUBDIVISION OF RECORD IN VOLUME 4, PAGE 81 OF THE PLAT RECORDS OF TRAVIS COUNTY, TEXAS.

LEGEND

- 1/2" REBAR FOUND
(UNLESS OTHERWISE NOTED)
- ⊙ IRON PIPE FOUND
- ▲ NAIL FOUND (TYPE NOTED)
- CALCULATED POINT
- P.O.B. POINT OF BEGINNING
- A.S.L. APPROXIMATE SURVEY LINE



CURVE TABLE

NO.	DELTA	RADIUS	TAN	ARC	CHORD	BEARING
C1	72°47'04"	235.00'	173.21'	298.53'	278.86'	S63°06'46"E
C2	53°58'05"	25.00'	12.73'	23.55'	22.69'	S53°42'17"E
C3	107°56'10"	60.00'	82.49'	113.03'	97.04'	S26°43'14"E
C4	46°33'17"	25.87'	11.13'	21.02'	20.45'	S03°30'29"W
C5	71°29'46"	155.00'	111.58'	193.42'	181.11'	S62°28'07"E
C6	14°26'28"	525.00'	66.51'	132.32'	131.97'	N89°00'14"E
C7	24°57'13"	475.00'	105.10'	206.87'	205.24'	N83°44'51"E
C8	60°53'08"	60.00'	35.26'	63.76'	60.80'	S76°53'33"E
C9	5°17'00"	2791.92'	128.82'	257.45'	257.36'	S36°04'09"W

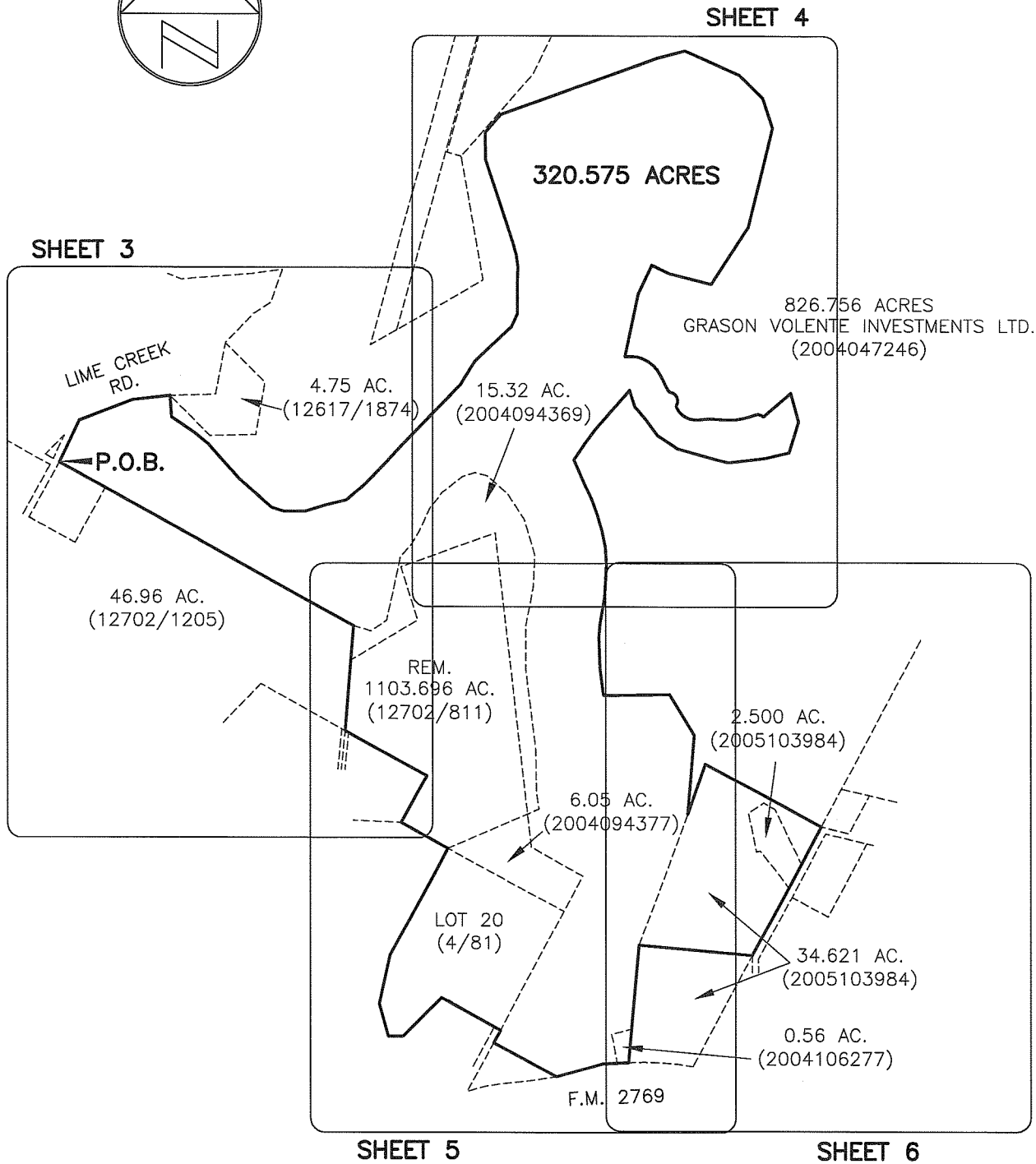
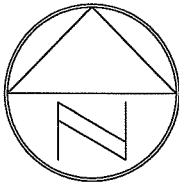
DATE OF SURVEY: 9/08/2003 &
12/6/2007 (15 AC. TRACT)
PLOT DATE: 12/20/2007
DRAWING NO.: 239-001 MUD REV
PROJECT NO.: 239-001
SHEET 1 OF 7

BEARING BASIS: GRID AZIMUTH FOR TEXAS
CENTRAL ZONE, 1983/93 HARN VALUES
FROM LCRA CONTROL NETWORK.

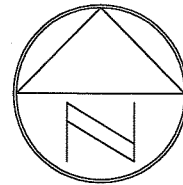
ATTACHMENTS: METES AND BOUNDS
DESCRIPTION

Chaparral

MAP SHEET INDEX



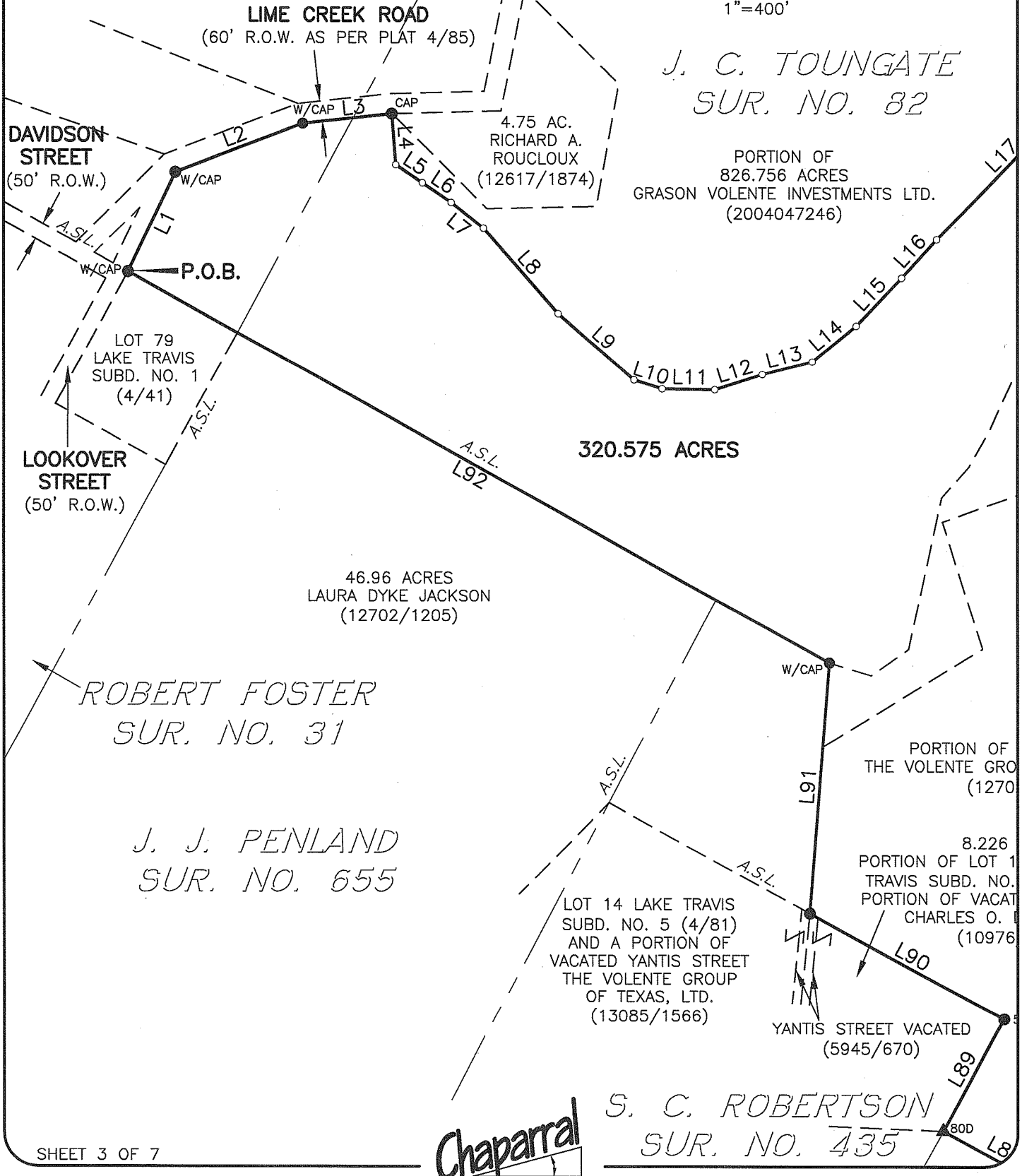
RUSK
TRANSPORTATION CO.
SUR. NO. 81



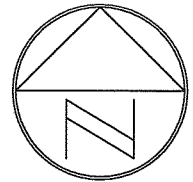
SCALE
1"=400'

J. C. TOUNGATE
SUR. NO. 82

PORTION OF
826.756 ACRES
GRASON VOLENTE INVESTMENTS LTD.
(2004047246)



PORTION OF 826.756 ACRES
GRASON VOLENTE INVESTMENTS LTD.
(2004047246)



SCALE
1"=400'

PORTION OF 826.756 ACRES
GRASON VOLENTE INVESTMENTS LTD.
(2004047246)

320.575 ACRES

*J. C. TOUNGATE
SUR. NO. 82*

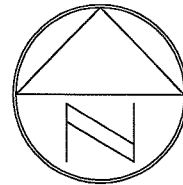
15.32 ACRES
THE VOLENTE GROUP
OF TEXAS, LTD.
(2004094369)

Chaparral

15.32 ACRES
THE VOLENTE GROUP
OF TEXAS, LTD.
(2004094369)

15.32 ACRES
THE VOLENTE GROUP
OF TEXAS, LTD.
(2004094369)

SCALE
1"=400'



J. C. TOUNGATE
SUR. NO. 82

PORTION OF 1103.696 AC.
THE VOLENTE GROUP OF TEXAS, LTD.
(12702/811)

8.226 ACRES
PORTION OF LOT 15 & LOT 10 LAKE
TRAVIS SUBD. NO. 5 (4/81) AND A
PORTION OF VACATED YANTIS STREET
CHARLES O. DAVIS, ET UX.
(10976/1471)

PORTION OF 826.756 ACRES
GRASON VOLENTE INVESTMENTS LTD.
(2004047246)

320.575 ACRES

YANTIS STREET VACATED
(5945/670)

ROBERTSON
NO. 435

9.883 ACRES
PORTION OF LOT 15
LAKE TRAVIS SUBD.
NO. 5 (4/81)
A.N.T., INC.
(2006028665)

6.05 ACRES
GRASON VOLENTE
INVESTMENTS, LTD.
(2004094377)

2.500 ACRES
CHARLES LEE D
& LO R. KIME
(2005103984)

34.621 ACRES
GRASON VOLENTE
INVESTMENTS, LTD.
(2005103984)

LOT 20
LAKE TRAVIS
SUBD. NO. 5
(4/81)

LOT 16A
REPLAT OF LOT 16,
LAKE TRAVIS
SUBD. NO. 5
(200500218)

S.C. ROBERTSON
SUR. NO. 434

J. C. TOUNGATE
SUR. NO. 82

HILL STREET

LOT 17
LAKE TRAVIS
SUBD. NO. 5
(4/81)

LOT 19
LAKE TRAVIS
SUBD. NO. 5
(4/81)

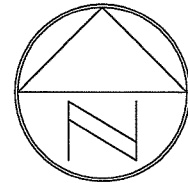
2.15 AC.
ALLISON THRASH
(11241/1313)
(DESCRIBED 10408/829)

0.56 ACRES
EDWARD F. HAMEL
(1/5 INTEREST)
(2004106277)

0.629 ACRES
CALLED VACATED EAST STREET
JOHN C. THRASH, JR. AND
PATRICIA R. THRASH
(1999158297)

DEED LINE
(12702/811)
F.M. 2769 (ANDERSON MILL ROAD)
(100' R.Q.W. AS PER STATE MAP,
NO TxDOT MONUMENTATION FOUND)

Chaparral



SCALE
1"=400'

PORTION OF 826.756 ACRES
GRASON VOLENTE INVESTMENTS LTD.
(2004047246)

PORTION OF
826.756 ACRES
GRASON VOLENTE
INVESTMENTS LTD.
(2004047246)

320.575 ACRES

6.05 ACRES
GRASON VOLENTE
INVESTMENTS, LTD.
(2004094377)

2.500 ACRES
CHARLES LEE DWYER
& LO R. KIMBRO
(2005103984)

34.621 ACRES
GRASON VOLENTE
INVESTMENTS, LTD.
(2005103984)

1.35 ACRE
JOHN ROBERT
SILBER & MARY
KATHRYN
UNDERWOOD SILBER
(3449/1159)

*A. W. NOCHOLS
SUR. NO. 57*

LAKE VIEW DRIVE
(R.O.W. WIDTH VARIES)

APPARENT R.O.W.

*J. C. TOUNGATE
SUR. NO. 82*

CALLED 2.93 ACRES
WARREN MALCOLM CLARK
& CAROLYN C. OATMAN
(25 % INTEREST)
(12939/463)
(600.06 ACRES DESCRIBED
658/57)

0.56 ACRES
EDWARD F. HAMEL
(1/5 INTEREST)
(2004106277)

2.15 AC.
ON THRASH
241/1313)
ED 10408/829)

DEED LINE
(12702/811)
1/2" L79

M. 2769 (ANDERSON MILL ROAD)
(100' R.O.W. AS PER STATE MAP,
NO TxDOT MONUMENTATION FOUND)

A.S.L.

A.S.L.

Chaparral

LINE TABLE					
No.	BEARING	LENGTH	L37	L75	
L1	N25°45'19"E	322.54'	L38 S13°50'43"W	L76 N84°44'28"W	1029.59'
L2	N69°15'19"E	403.22'	L39 S33°17'53"W	L77 S05°02'02"W	802.89'
L3	N83°47'56"E	264.60'	L40 N76°15'07"W	L78 S87°11'54"W	827.99'
L4	S04°29'08"E	150.06'	L41 N66°00'35"W	L79 S74°17'38"W	183.63'
L5	S56°30'47"E	94.54'	L42 S25°30'02"W	L80 N61°50'06"W	339.10'
L6	S56°08'12"E	102.45'	L43 S11°45'10"W	L81 N28°41'11"E	502.85'
L7	S51°39'02"E	122.06'	L44 S26°43'14"E	L82 N61°27'31"W	99.62'
L8	S41°32'17"E	332.88'	L45 N81°47'00"E	L83 S45°24'17"W	473.74'
L9	S48°41'52"E	298.56'	L46 S83°46'32"E	L84 N89°49'09"W	381.74'
L10	S72°37'39"E	86.89'	L47 N71°18'01"E	L85 N15°43'38"W	103.98'
L11	S89°01'53"E	155.65'	L48 N49°43'10"E	L86 N12°41'05"E	233.52'
L12	N72°27'30"E	147.88'	L49 S16°01'36"E	L87 N28°28'06"E	352.19'
L13	N75°34'06"E	152.87'	L50 S17°17'05"W	L88 N61°23'25"W	856.64'
L14	N50°20'31"E	169.00'	L51 S77°27'32"W	L89 N28°44'32"E	375.24'
L15	N43°42'12"E	194.34'	L52 S83°09'06"W	L90 N61°20'42"W	375.53'
L16	N42°38'22"E	153.01'	L53 N78°38'42"W	L91 N04°32'53"E	655.30'
L17	N44°31'50"E	623.90'	L54 N74°30'45"W	L92 N60°58'39"W	739.50'
L18	N32°02'35"E	189.46'	L55 N56°56'06"W	L93 N18°57'44"E	2372.58'
L19	N46°30'37"E	360.13'	L56 N36°28'42"W	L94 N66°57'30"E	377.01'
L20	N23°51'50"E	100.02'	L57 N40°58'04"W		611.30'
L21	N00°04'08"E	225.24'	L58 N18°43'29"W		
L22	N01°51'10"E	100.36'	L59 S41°30'42"W		
L23	N06°52'13"W	82.17'	L60 S23°14'29"E		
L24	N16°01'03"W	89.79'	L61 S26°09'00"E		
L25	N18°12'25"W	621.95'	L62 S19°39'47"E		
L26	N00°40'15"W	189.29'	L63 S16°43'25"E		
L27	N41°35'55"E	164.15'	L64 S11°18'58"E		
L28	N70°37'06"E	76.54'	L65 S03°40'02"E		
L29	N70°36'21"E	402.09'	L66 S03°15'20"W		
L30	N70°30'51"E	101.94'	L67 S10°05'58"W		
L31	N70°28'38"E	25.01'	L68 S04°22'07"W		
L32	N70°21'44"E	100.03'	L69 S02°00'33"E		
L33	N70°19'41"E	465.93'	L70 S07°25'36"E		
L34	N75°16'22"E	201.36'	L71 S07°48'46"E		
L35	S66°16'27"E	418.27'	L72 N89°09'58"E		
L36	S46°12'12"E	231.05'	L73 S31°54'47"E		
			L74 S04°37'34"W		

DATE OF SURVEY: 9/08/2003
AND 15 AC. ON 12/6/07
PLOT DATE: 12/20/2007
DRAWING NO.: 239-001 MUD REV
PROJECT NO.: 239-001
SHEET 7 OF 7