

1. COA TO INSTALL 1-48 STRAND IN DUCT 'J', IF DUCT 'J' IS OCCUPIED, INNER DUCT WILL BE USED. IF SPACE IS UNAVAILABLE, FOR INNER DUCT, THEN STANDARD DETAIL SHEET DCTD SHALL BE USED FOR ALTERNATIVE DUCT SELECTION.



- ① INGRESS AT TX DOT UNDERGROUND CABLE VAULT AT 13875 RESEARCH BLVD (US 183 @ RM 620 SSR) USING 1x2" PVC CONDUIT.
- ② EGRESS TX DOT UNDERGROUND CABLE VAULT AT 12700 RM 620 (RM 620 @ PECAN PARK BLVD) AT PECAN PARK USING 1x2" PVC CONDUIT.
- ③ EGRESS TX DOT UNDERGROUND CABLE VAULT AT 13300 RM 620 (RM 620 @ LAKE CREEK PARKWAY) AT LAKE CREEK USING 1x2" PVC CONDUIT.



CITY OF AUSTIN

TRAFFIC SIGNAL
SYSTEM IMPROVEMENTS
RM 620
RESEARCH BLVD - LAKECREEK BLVD

				INSTALLED BY: CJ
				DESIGNED BY: —
				DRAWN BY: SL
				CHECKED BY: BW
				APPROVED BY: BW
NO.	DATE	REVISION	BY	JOB No.

DRAWING No. U.S.183-Spicewood Springs-to-R.M.620-v-46

1. COA TO INSTALL 1-48 STRAND IN DUCT 'J', IF DUCT 'J' IS OCCUPIED, INNER DUCT WILL BE USED. IF SPACE IS UNAVAILABLE, FOR INNER DUCT, THEN STANDARD DETAIL SHEET DCTD SHALL BE USED FOR ALTERNATIVE DUCT SELECTION.



- ① INGRESS AT TX DOT UNDERGROUND CABLE VAULT AT 12800 RESEARCH BLVD (US 183 AT POND SPRINGS ROAD) USING 1x2" PVC CONDUIT.



OVERVIEW OF FIBER OPTIC CABLE INSTALLATION CONSTRUCTION SET

CITY OF AUSTIN

TRAFFIC SIGNAL
SYSTEM IMPROVEMENTS
U.S.HWY 183 RESEARCH BLVD @
POND SPRINGS ROAD TO LAKE LANE BLVD

PUBLIC WORKS DEPARTMENT

				INSTALLED BY: C
				DESIGNED BY: ---
				DRAWN BY: SL
				CHECKED BY: BW
				APPROVED BY: BW
NEL	DATE		REVISION	BY

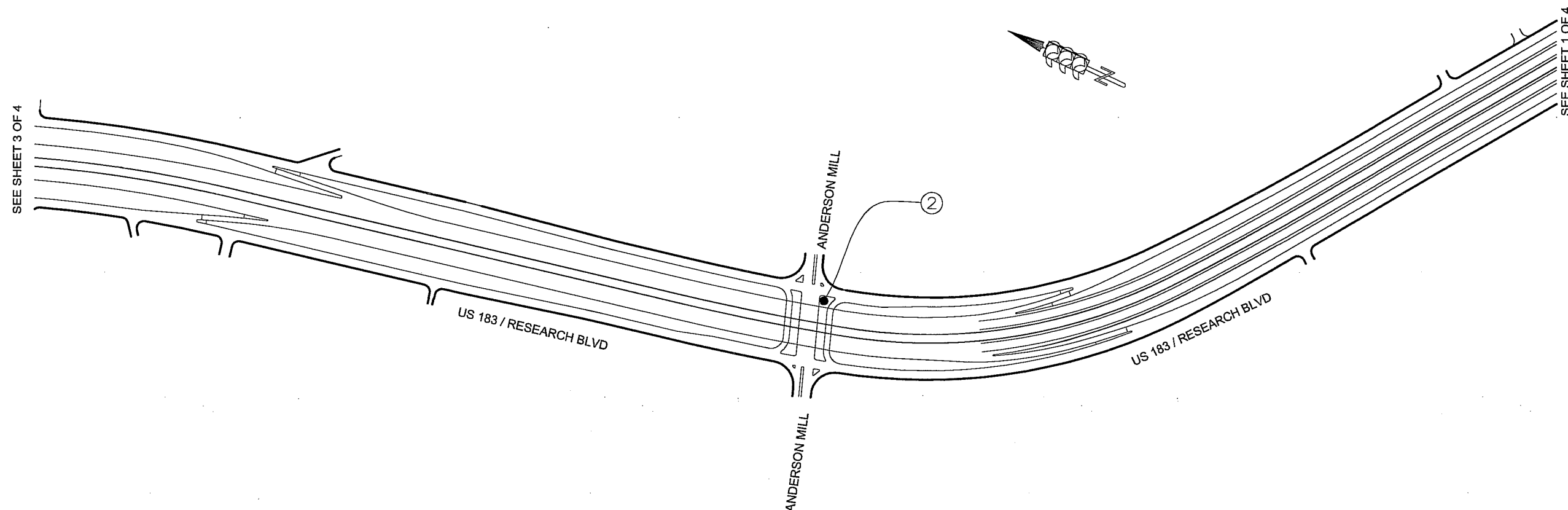
TRAFFIC MANAGEMENT COMMUNICATION SYSTEM

CABLE ROUTING PLAN
U.S.HWY.183 AT
POND SPRINGS ROAD- LAKELINE BLVD

SHEET 1 OF 4

DRAWING No.
U.S.183-Spicewood Springs-to-R.M.620-v-46

1. COA TO INSTALL 1-48 STRAND IN DUCT 'J', IF DUCT 'J' IS OCCUPIED, INNER DUCT WILL BE USED. IF SPACE IS UNAVAILABLE, FOR INNER DUCT, THEN STANDARD DETAIL SHEET DCTD SHALL BE USED FOR ALTERNATIVE DUCT SELECTION.



② EGRESS / INGRESS AT TX DOT
UNDERGROUND CABLE VAULT AT
13500 RESEARCH BLVD (US 183 @
ANDERSON MILL) USING 1x2" PVC
CONDUIT.



OVERVIEW OF FIBER OPTIC CABLE INSTALLATION CONSTRUCTION SET

CITY OF AUSTIN

TRAFFIC SIGNAL
SYSTEM IMPROVEMENTS
U.S.HWY 183 RESEARCH BLVD @
POND SPRINGS ROAD TO LAKE LANE BLVD

PUBLIC WORKS DEPARTMENT

				INSTALLED BY: CJI
				DESIGNED BY: —
				DRAWN BY: SLS
				CHECKED BY: BW
				APPROVED BY: BW
NOL	DATE		REVISION	BY

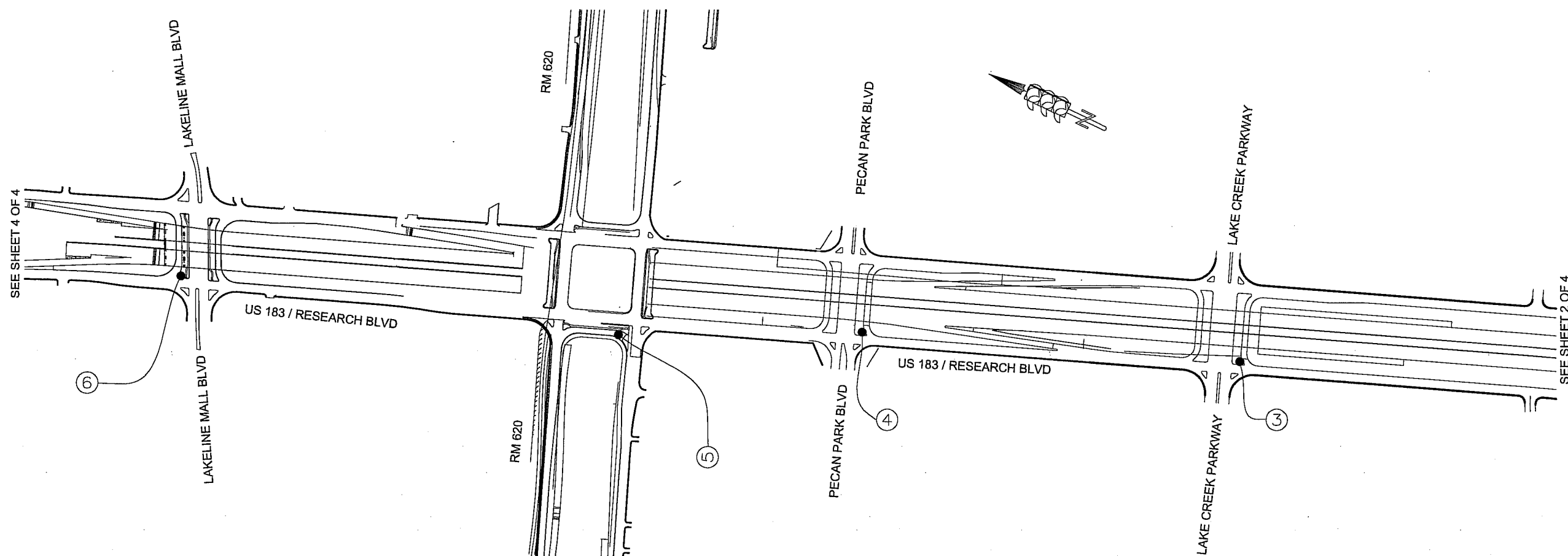
TRAFFIC MANAGEMENT COMMUNICATION SYSTEM

CABLE ROUTING PLAN
U.S.HWY.183 AT
POND SPRINGS ROAD- LAKELINE BLVD

SHEET 2 OF 4

DRAWING No. U.S.183-Spicewood Springs-to-R.M.620-v-46

1. COA TO INSTALL 1-48 STRAND IN DUCT 'J', IF DUCT 'J' IS OCCUPIED, INNER DUCT WILL BE USED. IF SPACE IS UNAVAILABLE, FOR INNER DUCT, THEN STANDARD DETAIL SHEET DCTD SHALL BE USED FOR ALTERNATIVE DUCT SELECTION.



③ EGRESS / INGRESS AT TX DOT UNDERGROUND CABLE VAULT AT 13770 RESEARCH BLVD (US 183 @ LAKE CREEK PARKWAY USING 1x2" PVC CONDUIT.

④ EGRESS / INGRESS TX DOT UNDERGROUND CABLE VAULT AT 13825 RESEARCH BLVD (US 183 @ PECAN PARK) USING 1x2" PVC CONDUIT.

⑤ EGRESS / INGRESS AT TX DOT UNDERGROUND CABLE VAULT AT 13875 RESEARCH BLVD (US 183 @ SG 45 SSR USING 1x2" PVC CONDUIT.

⑥ EGRESS / INGRESS AT TX DOT UNDERGROUND CABLE VAULT AT 14000 RESEARCH BLVD (US 183 @ LAKELINE MALL DRIVE USING 1x2" PVC CONDUIT.



OVERVIEW OF FIBER OPTIC CABLE INSTALLATION CONSTRUCTION SET

CITY OF AUSTIN

TRAFFIC SIGNAL
SYSTEM IMPROVEMENTS
U.S.HWY 183 RESEARCH BLVD @
POND SPRINGS ROAD TO LAKE LANE BLVD

PUBLIC WORKS DEPARTMENT

					INSTALLED BY: CJD
					DESIGNED BY: ---
					DRAWN BY: SLS
					CHECKED BY: BWC
					APPROVED BY: BWC
NL	DATE		REVISION	BY	JOB No.

TRAFFIC MANAGEMENT COMMUNICATION SYSTEM

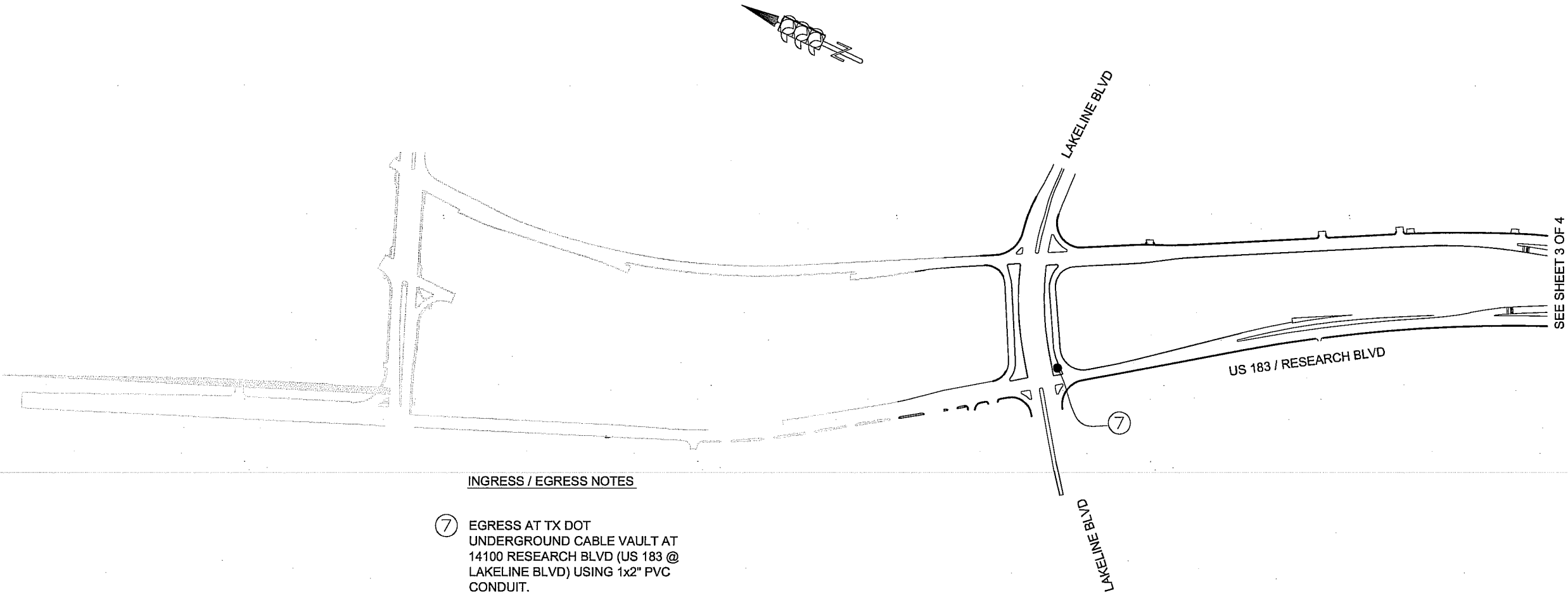
CABLE ROUTING PLAN
U.S.HWY.183 AT
POND SPRINGS ROAD- LAKELINE BLVD

SHEET 3 OF 4

DRAWING No. U.S.183-Spicewood Springs-to-R.H.620-v-46

GENERAL NOTES:

1. COA TO INSTALL 1-48 STRAND IN DUCT 'J', IF DUCT 'J' IS OCCUPIED, INNER DUCT WILL BE USED. IF SPACE IS UNAVAILABLE, FOR INNER DUCT, THEN STANDARD DETAIL SHEET DCTD SHALL BE USED FOR ALTERNATIVE DUCT SELECTION.



INGRESS / EGRESS NOTES

⑦ EGRESS AT TX DOT UNDERGROUND CABLE VAULT AT 14100 RESEARCH BLVD (US 183 @ LAKELINE BLVD) USING 1x2" PVC CONDUIT.



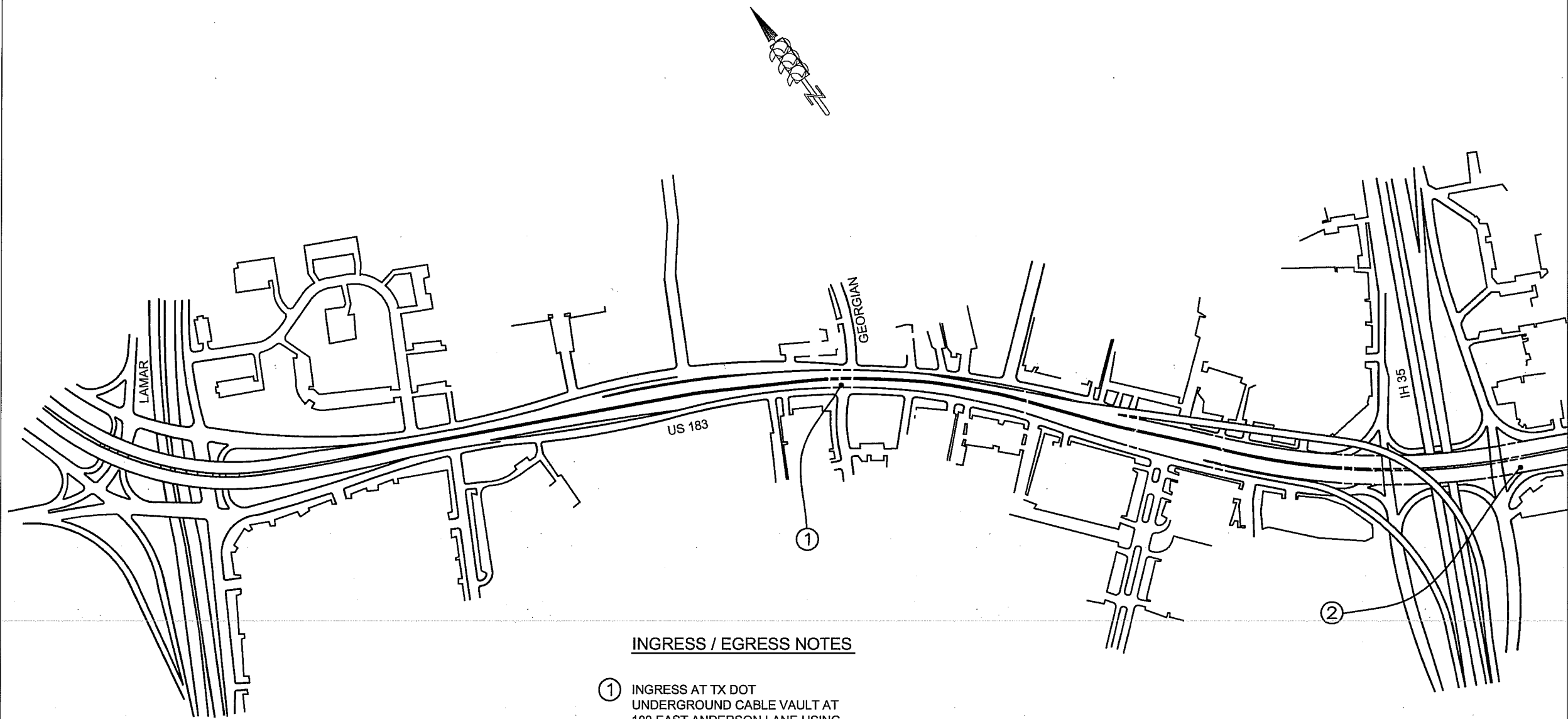
CITY OF AUSTIN				INSTALLED BY: CJD	TRAFFIC MANAGEMENT COMMUNICATION SYSTEM	
				DESIGNED BY: -----		
TRAFFIC SIGNAL SYSTEM IMPROVEMENTS U.S.HWY 183 RESEARCH BLVD @ POND SPRINGS ROAD TO LAKE LANE BLVD				DRAWN BY: SLS	CABLE ROUTING PLAN U.S.HWY.183 AT POND SPRINGS ROAD- LAKELINE BLVD	
				CHECKED BY: BWC		
				APPROVED BY: BWC		
PUBLIC WORKS DEPARTMENT						
	NO.	DATE	REVISION	BY	JOB No.	DRAWING No. U.S.183-Splicewood Springs-to-R.M.620-v-46



OVERVIEW OF
FIBER OPTIC CABLE
INSTALLATION
CONSTRUCTION SET

GENERAL NOTES:

1. COA TO INSTALL 1-48 STRAND IN DUCT 'J', IF DUCT 'J' IS OCCUPIED, INNER DUCT WILL BE USED. IF SPACE IS UNAVAILABLE, FOR INNER DUCT, THEN ATTACHED DETAIL SHEET DCTD SHALL BE USED FOR ALTERNATIVE DUCT SELECTION.



INGRESS / EGRESS NOTES

- ① INGRESS AT TX DOT UNDERGROUND CABLE VAULT AT 100 EAST ANDERSON LANE USING 1x2" PVC CONDUIT.
- ② EGRESS TX DOT UNDERGROUND CABLE VAULT AT 700 EAST ANDERSON LN.



OVERVIEW OF
FIBER OPTIC CABLE
INSTALLATION
CONSTRUCTION SET

CITY OF AUSTIN

TRAFFIC SIGNAL
SYSTEM IMPROVEMENTS
U.S.HWY 183
LAMAR - IH35

PUBLIC WORKS DEPARTMENT

1	04-18-07	REVISED PER TXDOT COMMENTS	CFW		
0	05-27-05	ISSUE OF PRELIMINARY CONSTRUCTION PHASE 1	—		
NO.	DATE	REVISION	BY		

INSTALLED BY: CJD
DESIGNED BY: —
DRAWN BY: BWC
CHECKED BY: BWC
APPROVED BY: BWC

JOB No.: 822694000

TRAFFIC MANAGEMENT
COMMUNICATION SYSTEM

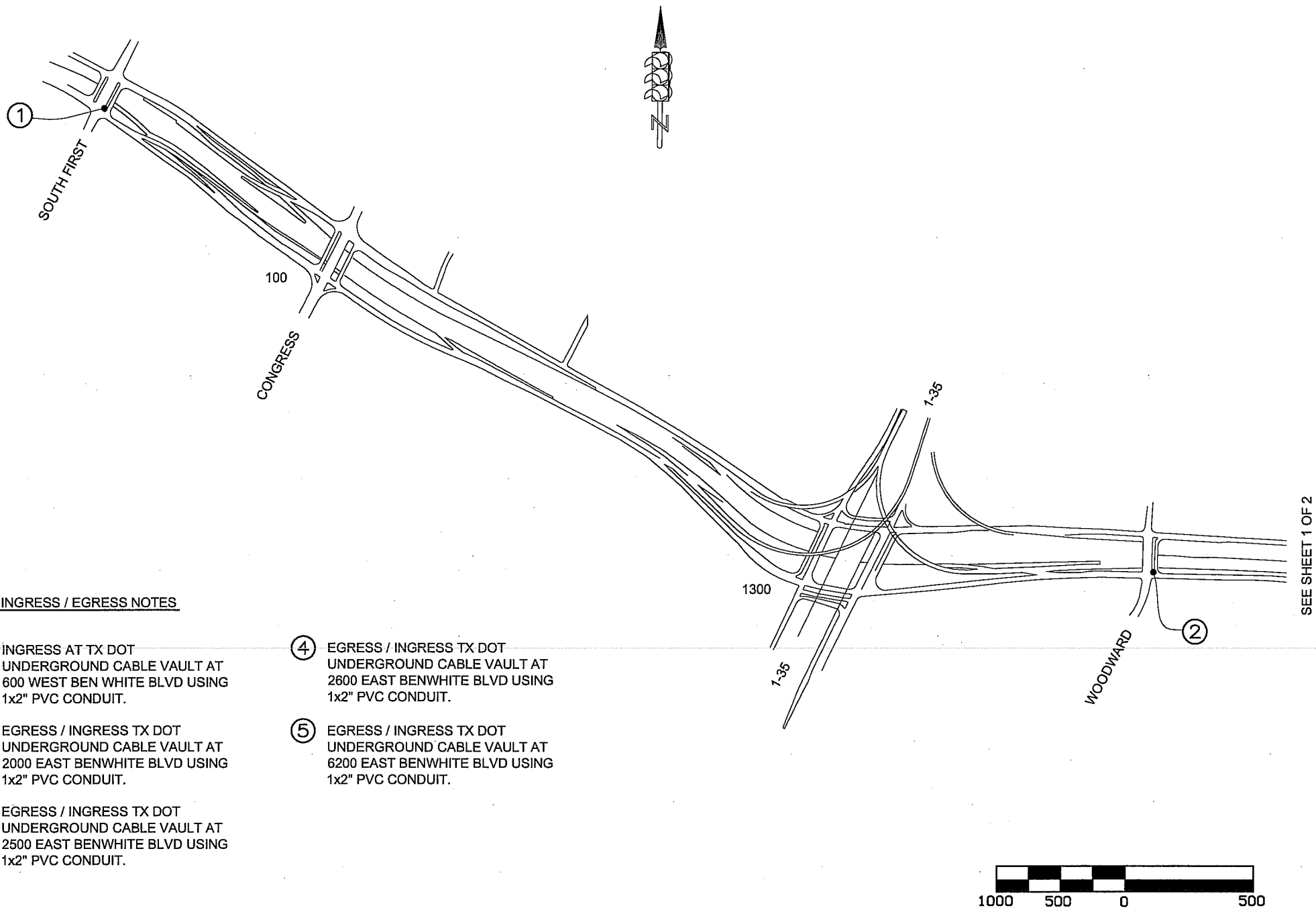
CABLE ROUTING PLAN
U.S.HWY.183
LAMAR - IH35

SHEET 1 OF 1

DRAWING No.
us183-LAMAR - IH35-overview-V-46.dwg

GENERAL NOTES:

1. COA TO INSTALL 1-48 STRAND IN DUCT 'J', IF DUCT 'J' IS OCCUPIED, INNER DUCT WILL BE USED. IF SPACE IS UNAVAILABLE, FOR INNER DUCT, THEN ATTACHED DETAIL SHEET DCTD SHALL BE USED FOR ALTERNATIVE DUCT SELECTION.



INGRESS / EGRESS NOTES

- ① INGRESS AT TX DOT UNDERGROUND CABLE VAULT AT 600 WEST BEN WHITE BLVD USING 1x2" PVC CONDUIT.

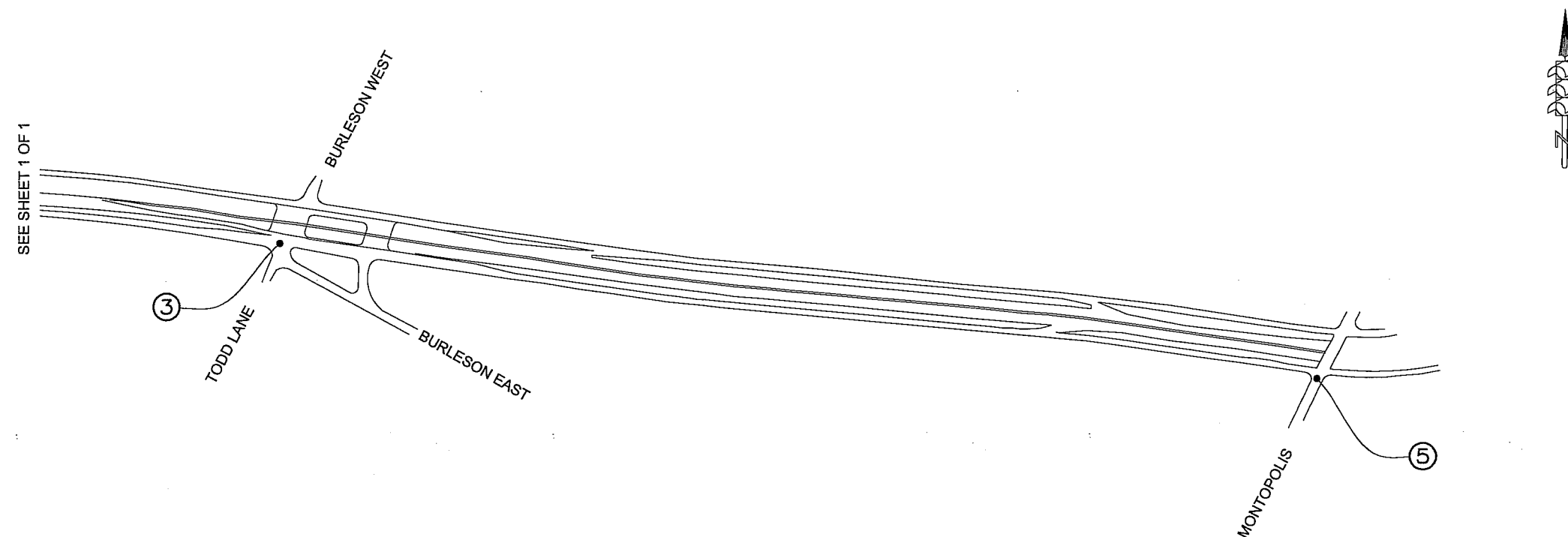
② EGRESS / INGRESS TX DOT UNDERGROUND CABLE VAULT AT 2000 EAST BENWHITE BLVD USING 1x2" PVC CONDUIT.

③ EGRESS / INGRESS TX DOT UNDERGROUND CABLE VAULT AT 2500 EAST BENWHITE BLVD USING 1x2" PVC CONDUIT.
- ④ EGRESS / INGRESS TX DOT UNDERGROUND CABLE VAULT AT 2600 EAST BENWHITE BLVD USING 1x2" PVC CONDUIT.

⑤ EGRESS / INGRESS TX DOT UNDERGROUND CABLE VAULT AT 6200 EAST BENWHITE BLVD USING 1x2" PVC CONDUIT.

OVERVIEW OF FIBER OPTIC CABLE INSTALLATION CONSTRUCTION SET	CITY OF AUSTIN	TRAFFIC SIGNAL SYSTEM IMPROVEMENTS BENWHITE / TX71 SOUTH FIRST - MONTOPOLIS	PUBLIC WORKS DEPARTMENT				INSTALLED BY: CJD	TRAFFIC MANAGEMENT COMMUNICATION SYSTEM
							DESIGNED BY: -----	
							DRAWN BY: SLS	CABLE ROUTING PLAN BENWHITE TX71 SOUTH FIRST - MONTOPOLIS
							CHECKED BY: BWC	
							APPROVED BY: BWC	
								SHEET 1 OF 2

1. COA TO INSTALL 1-48 STRAND IN DUCT 'J', IF DUCT 'J' IS OCCUPIED, INNER DUCT WILL BE USED. IF SPACE IS UNAVAILABLE, FOR INNER DUCT, THEN ATTACHED DETAIL SHEET DCTD SHALL BE USED FOR ALTERNATIVE DUCT SELECTION.

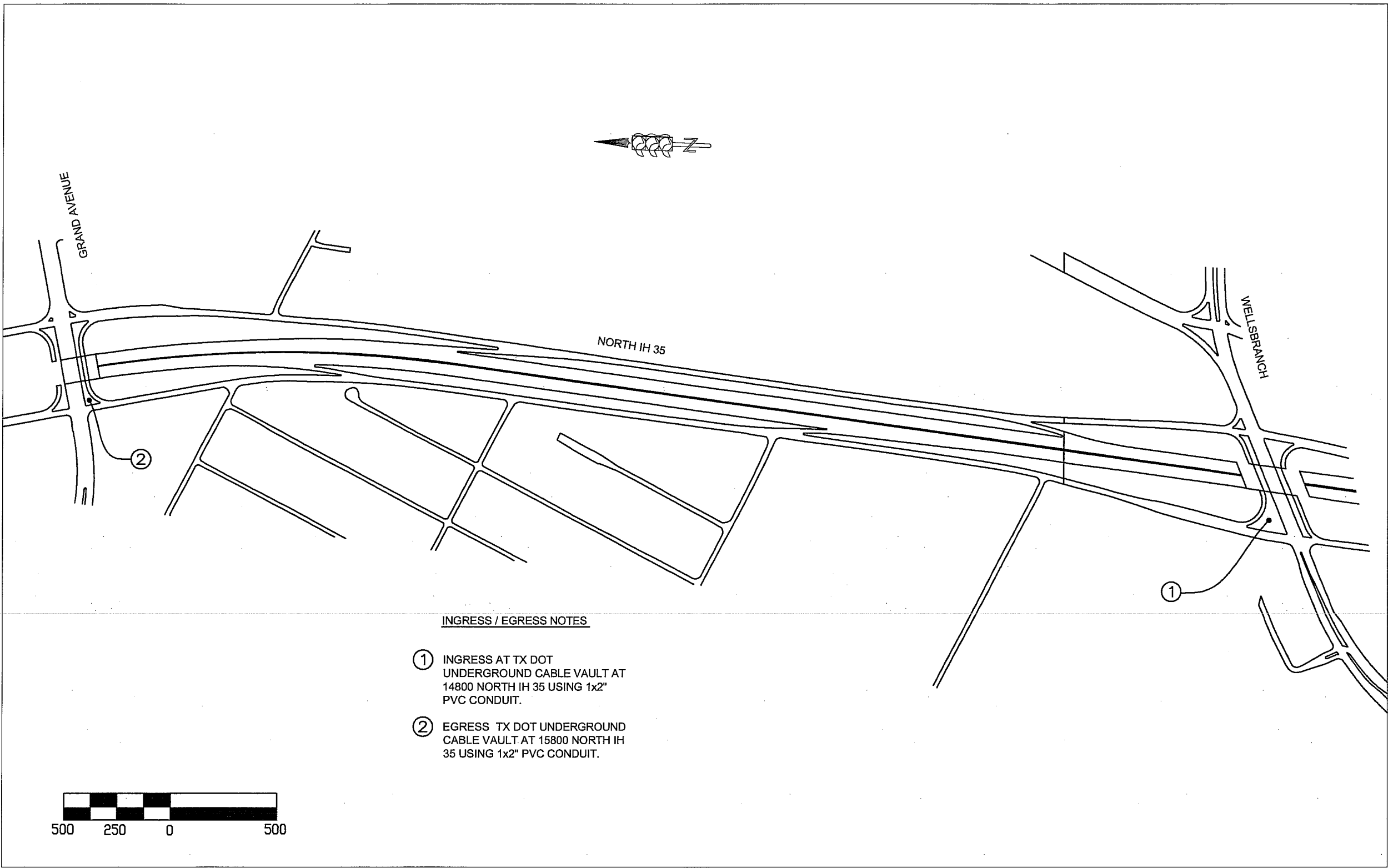


<p>① INGRESS AT TX DOT UNDERGROUND CABLE VAULT AT 700 WEST BEN WHITE BLVD USING 1x2" PVC CONDUIT.</p> <p>② EGRESS / INGRESS TX DOT UNDERGROUND CABLE VAULT AT 2100 EAST BENWHITE BLVD USING 1x2" PVC CONDUIT.</p> <p>③ EGRESS / INGRESS TX DOT UNDERGROUND CABLE VAULT AT 2600 EAST BENWHITE BLVD USING 1x2" PVC CONDUIT.</p>	<p>④ EGRESS / INGRESS TX DOT UNDERGROUND CABLE VAULT AT 2600 EAST BENWHITE BLVD USING 1x2" PVC CONDUIT.</p> <p>⑤ EGRESS / INGRESS TX DOT UNDERGROUND CABLE VAULT AT 6200 EAST BENWHITE BLVD USING 1x2" PVC CONDUIT.</p>
---	---

[illegible]

GENERAL NOTES:

1. COA TO INSTALL 1-48 STRAND IN DUCT 'J', IF DUCT 'J' IS OCCUPIED, INNER DUCT WILL BE USED. IF SPACE IS UNAVAILABLE, FOR INNER DUCT, THEN ATTACHED DETAIL SHEET DCTD SHALL BE USED FOR ALTERNATIVE DUCT SELECTION.



INGRESS / EGRESS NOTES

- ① INGRESS AT TX DOT UNDERGROUND CABLE VAULT AT 14800 NORTH IH 35 USING 1x2" PVC CONDUIT.
- ② EGRESS TX DOT UNDERGROUND CABLE VAULT AT 15800 NORTH IH 35 USING 1x2" PVC CONDUIT.

CITY OF AUSTIN
TRAFFIC SIGNAL
SYSTEM IMPROVEMENTS
IH-35
WELLSBRANCH - GRAND AVENUE

PUBLIC WORKS DEPARTMENT

INSTALLED BY: CJD
DESIGNED BY: ----
DRAWN BY: SLS
CHECKED BY: BWC
APPROVED BY: BWC

TRAFFIC MANAGEMENT
COMMUNICATION SYSTEM
CABLE ROUTING PLAN
IH 35
WELLSBRANCH - GRAND AVENUE

SHEET 1 OF 1

DRAWING No.
FIBER OPTIC PROJECTS\wellsbranch_grand avenue

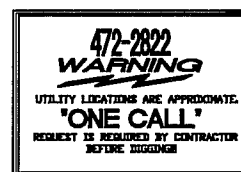


OVERVIEW OF
FIBER OPTIC CABLE
INSTALLATION
CONSTRUCTION SET

1. COA TO INSTALL 1-48 STRAND IN DUCT 'J', IF DUCT 'J' IS OCCUPIED, INNER DUCT WILL BE USED. IF SPACE IS UNAVAILABLE, FOR INNER DUCT, THEN STANDARD DETAIL SHEET DCTD SHALL BE USED FOR ALTERNATIVE DUCT SELECTION.



- ① INGRESS AT TX DOT UNDERGROUND CABLE VAULT AT 1500 EAST ANDERSON LANE USING 1x2" PVC CONDUIT.
- ② EGRESS TX DOT UNDERGROUND CABLE VAULT AT 2500 EAST ANDERSON LANE USING 1x2" PVC CONDUIT.



OVERVIEW OF FIBER OPTIC CABLE INSTALLATION CONSTRUCTION SET

PUBLIC WORKS DEPARTMENT

					INSTALLED BY: CJD
					DESIGNED BY: ---
					DRAWN BY: SLS
					CHECKED BY: BWC
					APPROVED BY: BWC
NO.	DATE		REVISION	BY	JOB No.

SHEET 1 OF 1

DRAWING No.
FIBER OPTIC PROJECTS\U.S.183_Cameron