

# **ZONING CHANGE REVIEW SHEET**

**CASE NUMBER:** C14H-2008-0004

**HLC DATE:**

April 28, 2008

**PC DATE:**

May 13, 2008

**APPLICANT:** Carolyn McFarland, owner

**HISTORIC NAME:** Evans-Otting House

**WATERSHED:** Waller Creek

**ADDRESS OF PROPOSED ZONING CHANGE:** 4200 Duval Street

**ZONING FROM:** SF-3-NCCD to SF-3-H-NCCD

**SUMMARY STAFF RECOMMENDATION:** Staff recommends the proposed zoning change from single family residence, neighborhood conservation (SF-3-NCCD) combining district to single family residence – Historic Landmark, neighborhood conservation (SF-3-H-NCCD) combining district zoning.

**HISTORIC LANDMARK COMMISSION ACTION:** Recommended the proposed zoning change from single family residence, neighborhood conservation (SF-3-NCCD) combining district zoning to single family residence – Historic Landmark, neighborhood conservation (SF-3-H-NCCD) combining district zoning. Vote: 7-0 (Limbacher absent).

**PLANNING COMMISSION ACTION:** Recommended the proposed zoning change from single family residence, neighborhood conservation (SF-#-NCCD) combining district zoning to single family residence – Historic Landmark, neighborhood conservation (SF-3-H-NCCD) combining district zoning. Vote: 9-0.

**DEPARTMENT COMMENTS:** The house is listed in the Comprehensive Cultural Resources Survey (1984) but without a priority for research.

**CITY COUNCIL DATE:** May 22, 2008

**ACTION:**

**ORDINANCE READINGS:** 1<sup>ST</sup> 2<sup>ND</sup> 3<sup>RD</sup>

**ORDINANCE NUMBER:**

**CASE MANAGER:** Steve Sadowsky

**PHONE:** 974-6454

**NEIGHBORHOOD ORGANIZATION:** Hyde Park Neighborhood Association

## **BASIS FOR RECOMMENDATION:**

The ca. 1915 house is a classic example of an Arts and Crafts bungalow and has significant associations with Rev. Henry C. Evans, the founder of Texas Presbyterian College in Milford, Texas and Alvah Otting, a prominent grocer, dancehall operator, and insurance man in Austin.

**Architecture:**

One-story rectangular-plan front-gabled frame Arts and Crafts-style bungalow with a full-width front-gabled independent porch on battered posts and boxed piers and a vertical picket railing; single and paired 1:1 fenestration; Craftsman-styled sidelights at the front entry; hipped-roof screened porch at the rear left (south) elevation; standing-seam metal roof.

**Historical Associations:**

The house was built around 1915; the first owner and occupant was Mrs. Jennie Proctor, a widow with 9 children. Mrs. Proctor had two working children who lived with her, a daughter Mary, a stenographer, and another daughter Willie May, who worked as a clerk at the Kress Store on Congress Avenue. Mrs. Proctor lived in the house only until 1916, and the 1916 city directory shows her husband, Nathan Proctor, a bricklayer, living at 410 E. 3<sup>rd</sup> Street. Mrs. Proctor sold the house to C.E. Straub, who was the chief cashier for the International and Great Northern Railroad, although it is uncertain as to whether Straub ever lived in the house. The 1918 city directory shows the house occupied by William H. and Mamie L. Dodson, who had moved there from 1103 W. 6<sup>th</sup> Street. Dodson was the local manager of Quality Mills, Austin's largest grain operation, which produced flour and other products. Charles and Marguerite Adkins, who built several houses in College Court, purchased the house in August, 1918, and sold it a year later to Edmund Bell Stiles and Margaret Stiles. The 1920 city directory shows E.F. and Margaret E. Stiles as the owners and occupants of the house – he was an assistant in the Economic Geology Department in the Bureau of Economic Geology and Technology at the University of Texas, while Margaret was the assistant to the Director of the Bureau. Edmund and Margaret Stiles were aunt and nephew – the 1922 city directory shows Edmund still residing at the house at 4200 Duval Street, while Margaret is listed as living at 307 W. 17<sup>th</sup> Street. Both had the same occupations as had been listed in the 1920 directory; and then neither of them shows up in the 1924 directory. The Stiles sold the house in July, 1921 to the Rev. Henry C. Evans and his wife Lida Evans, who also appear in the 1922 directory as the owners and occupants of the house. Rev. Evans was the founding president of the Texas Presbyterian College for Girls in Milford, Ellis County, Texas in 1902, and developed the school into Texas Presbyterian College. The library of the college was named for Rev. Evans, and a camp, was named for his wife, Lelia (Lida) Verner Evans. After serving two terms as president, and the merger of the school with Austin College of Sherman, Texas, in 1921, Evans and his wife moved to Austin, where they purchased this house, although it appears that they moved away from Austin before 1924 and rented the house out until they sold it in 1928. Their tenant in 1924 and 1927 was Max Nitschke, who was a carpenter at the Driskill Hotel. The 1916 city directory shows Max Nitschke as a contractor with his office and home on the east side of The Circle in Fairview Park.

In 1928, Rev. Evans sold the house to Henry and Lillie Maerki and his wife Lillie (Otting) Maerki. Maerki was a prominent baker in Austin, having arrived in the city from Switzerland in 1890. He worked in the Lundberg Bakery on Congress Avenue, then purchased the bakery from Lundberg's widow in 1895. He established the Maerki Bakery at 6<sup>th</sup> and Rio Grande in 1906, which was eventually sold to the Buttercrust Baking Company. Maerki never lived in the house, but purchased it to

rent to his wife's brother, Alvah Otting and his wife Lutie May, who purchased the property from Maerki in 1933. Alvah Otting (1889-1948) was born in Nebraska, and first appears in Austin city directories in 1909-10, where he is listed as a clerk for Hill and Hill, a grocery and feed business in the 1000 block of Congress Avenue. He was rooming at 610 W. 6<sup>th</sup> Street in 1910, and continued to live in that block when he established the Otting Pure Food Grocery Store, carrying "staple and fancy groceries" at 608 W. 6<sup>th</sup> by 1913. After he married, he continued to live at 608 ½ W. 6<sup>th</sup> Street, and operated his grocery store at 608-10 W. 6<sup>th</sup> Street until 1920, when he also opened the Enfield Grocery at 1201 Parkway. Lutie May Otting is listed as his book-keeper in 1916 and as the manager of the Enfield Grocery in 1920. The 1922 city directory lists the Ottings as living at Deep Eddy, where Alvah Otting was the manager of the Deep Eddy Amusement Company, which operated the dance hall and pavilion at the park on the river. Alvah and Lutie May Otting continued to operate the dance hall and to live at Deep Eddy through the mid-1920s. The 1927 city directory does not list an occupation for Alvah Otting, and they are listed as living at 1408 Colorado Street. The Ottings had moved into this house on Duval Street by 1929, and Otting entered the insurance business by 1931 as a representative of the Great Northern Life Insurance Company. Otting also worked as a car salesman at times – the 1924 city directory lists him as a salesman for Pierce Motor Company on E. 5<sup>th</sup> Street at the same time he was managing the Deep Eddy Pavilion, and he is listed as a salesman for Capitol Chevrolet in the 1937 city directory. In the directories of 1944-45 and 1947, Otting is listed as an inspector for the State Department of Health; he died in 1948. After his death, Lutie May Otting continued to live in the house until the late 1970s. In the early 1980s, the house was sold to John and Brigid Aldridge, and then in 1983 to Samuel and Carolyn McFarland, who operated it as rental property. Carolyn McFarland moved into the house in the early 1990s after her husband's death and embarked on a restoration of the house, which included the reconstruction of the front porch, painting, and the installation of a metal roof.

**PARCEL NO.:** 02200802140000

**LEGAL DESCRIPTION:** Lots 15 and 16, Block B, Statesman Addition to Hyde Park

**ANNUAL TAX ABATEMENT:** \$3,172 (owner-occupied); city portion: \$772.

**APPRAISED VALUE:** \$286,626

**PRESENT USE:** Single-family residence.

**CONDITION:** Excellent

**PRESENT OWNER:**

Carolyn Margaret Aldridge McFarland  
4200 Duval Street  
Austin, Texas 78751




**DATE BUILT:** ca. 1915

**ALTERATIONS/ADDITIONS:** A restoration project in the early 1990s restored the original porch supports and added a standing-seam metal roof to the house.

**ORIGINAL OWNER(S):** Mrs. Jennie Proctor (1915)

**OTHER HISTORICAL DESIGNATIONS:** The house was listed as potentially contributing in the Hyde Park National Register Historic District nomination because the original porch supports had been replaced with ornamental metal. With the restoration of the original porch in the early 1990s, the house is now contributing to the historic district.



 **SUBJECT TRACT**  
 **ZONING BOUNDARY**  
 **PENDING CASE**

**HISTORIC ZONING**  
**ZONING CASE#: C14H-2008-0004**  
**ADDRESS: 4200 DUVAL ST**  
**SUBJECT AREA: 0.000 ACRES**  
**GRID: K25**  
**MANAGER: S. SADOWSKY**



This map has been produced by GIS Services for the sole purpose of geographic reference. No warranty is made by the City of Austin regarding specific accuracy or completeness.



**Evans-Otting House**  
ca. 1915  
4200 Duval Street

## **Criteria Qualifications for the Procter-Evans-Otting Home – 4200 Duval:**

- A. Architecture. The house is an excellent example of an Arts and Crafts bungalow and characteristic for its construction date 1915-1916. The prominent front-gabled porch, tapered porch columns, shingled tympanum, multiple windows and decorative screens, deep eaves supported by triangular knee braces, and horizontal orientation of the body elements typify the Craftsman Bungalow movement. This home epitomizes the prominent architectural style of the Hyde Park neighborhood which was originally founded as a Victorian suburb. This house represents the transition in the neighborhood from the highly ornamented Victorian-era homes to the organic Arts And Crafts style.
- B. Historical Associations. (1) Jennie Procter was a widow with nine children when she built the home, 1915-1916. This would be a considerable accomplishment for a widowed woman of the time caring for nine children who had previously nursed an invalid husband. (2) Rev. Henry Clay Evans was a member of the Texas Presbyterian Synod and a founder and first president of the Texas Presbyterian College. He moved to Austin following his service as president to Texas Presbyterian College (later merged with Austin College of Sherman, Texas). He and wife Lella (Lida) resided at 4200 Duval beginning in 1921 and owned the home until 1928. (3) The Maerki and Otting families are related as is their association with the property at 4200 Duval. Henry Maerki was an Austin Baker of Swiss origin who bought the Lundberg Bakery on Congress Ave and later Incorporated Maerki Bakery which he sold to Buttercrust Bakery. Henry Maerki and wife Lillie Otting Maerki bought the home at 4200 Duval for her brother Alvah Otting and wife Lutie. The Luttings were living in the home by 1929. By 1933 they purchased the home from their relatives. Alvah Otting was a Great Northern Life Insurance agent and was associated with the U.S. Public Health Department. After his passing in 1948 Lutie Otting continued to live in the home. The home was the center of activity for an extended family. Widow Lutie Otting lived in the home at 4200 Duval for more than 50 years. (4) This home represents a significant portrayal of typical middle-class home life in historic Hyde Park. A significant sub-class of this group represented by the ownership of this home is the single or widowed woman.
- C. Archeology. Not Applicable.
- D. Community Value. This property's unique location and physical characteristics represent an established and familiar visual feature of the Hyde Park Neighborhood. It is situated on Duval Street, a prominent thoroughfare in the city of Austin, and the corner of 42<sup>nd</sup> Street. This location is a gateway to the heart of Hyde Park. The home, often referred to as "the emerald green bungalow on Duval", contributes to the character and the image of the City of Austin.
- E. Landscape Feature. The natural landscape of this property includes several large tree specimens of significance. Pecan trees line 42<sup>nd</sup> Street with the largest on the corner at Duval Street. Another large pecan is in the back yard.

## Historic Narrative: 4200 Duval Street

### Hyde Park and the Statesman Addition

"Hyde Park is Austin's oldest residential suburb, a neighborhood bounded by 38<sup>th</sup> and 45<sup>th</sup> on the north and south, Duval and Guadalupe Streets on the east and west."<sup>1</sup>

"The history of Hyde Park began with a definite event, the arrival in Austin of Kansas entrepreneur and streetcar expert, Monroe Shipe in 1899. Within a year or so, Shipe's street railway system was a going concern, and he turned his attention to the development of an 'elite suburb' on the old fairground north of 38<sup>th</sup> Street. Shipe developed the area he named Hyde Park as an independent community. Since Hyde Park was more than a mile from the city proper, he built the streetcar line to his development and paid for the extension of Congress Avenue to the north out of his own pocket. The new thoroughfare was known as 'the Speedway' "<sup>2</sup>

Several additions were made to Shipe's original subdivision of Hyde Park. The Proctor-Evans-Otting Home would be built on lots 15 and 16 Block B in the plat known as "the Statesman Addition to Hyde Park."<sup>3</sup> The original survey and plat by G.S. Iredell a city engineer was filed with Travis County February 28, 1910.<sup>4</sup> The subdivision plat included Blocks "A" and "B" between 4<sup>th</sup> Street (now 41<sup>st</sup> Street) and 5<sup>th</sup> Street (now 42<sup>nd</sup> Street) with frontage on Duval and bounded by an alley on the west. Each block included lots 1-16. Each lot had 25' of street frontage and was often combined for building. The plat was filed by A.G. Smoot on behalf of the Statesman Company.<sup>5</sup>

**FOR SALE**  
**32 LOTS IN HYDE PARK**  
The best lots in the Park, with East frontage.  
The best bargains in Real Estate in Austin.  
For Particulars, Prices and Terms, see me at once.

Asher G. Smoot was a pioneering editor and founder of Austin publishing institutions. "On Nov. 1, 1902 he [John H. Kirby, Houston Lumber Baron] Incorporated the State Publishing Company and installed A.G. Smoot as manager."<sup>6</sup> Smoot began advertising the Hyde Park properties in the Statesman Addition days

<sup>1</sup> Sitton, Sarah and Thad Sitton. Austin's Hyde Park: The First 50 Years: 1891-1941, Pecan Press Publications. Austin, Texas. 1991. page iii-iv

<sup>2</sup> Ibid, pg. iii

<sup>3</sup> Travis County Clerk Records, Real Property Plats, Volume 2, pg. 201

<sup>4</sup> Ibid

<sup>5</sup> Ibid

<sup>6</sup> Busfield, Roger M. History of the Austin Statesman 1871-1956. Austin, TX.1956, pg. 109



prior to officially filing the plat with Travis County. A banner ad in the classified section of the Austin Daily Statesman states, "For Sale - 32 Lots in Hyde Park with East Frontage. The best bargains in Real Estate in Austin. For Particulars, Prices, and Terms, see me at once. Geo. B. Lucas - Real Estate Agent."<sup>7</sup> "Smoot remained at the helm [The Austin Daily Statesman] until 1911 when he was replaced."<sup>8</sup> A. G. Smoot continued his legacy in publishing in Austin, "A third daily entered the field in 1914, The Austin American, which had been founded by A.G. Smoot, a former Statesman manager, and Hal H. Sevier."<sup>9</sup>

Vest E. Lander and Emma E. Lander. County records indicate on July 5, 1911 Mc F. Kerbey (Kirby) representing the Austin Statesman Company sold lots 7-16 of Block B of the Statesman addition to Vest E. Lander and wife Emma E.<sup>10</sup> The Landers paid \$1900 for the 10 lots.

Vest E. Lander is listed as a collection clerk for Austin National Bank.<sup>11</sup> Later records indicate Emma Lander was a teacher of grades 1-6 for the Eanes School District in Travis County.<sup>12</sup>

Mrs. Jennie E. Proctor. The Landers transferred lots 13-16 in Block B of the Statesman Addition for the sum of \$900 to Mrs. Jennie E. Proctor April 22, 1915.<sup>13</sup> Jennie Proctor was the widow of Nathan G. Proctor, a bricklayer, who died March 12, 1915. Nathan Proctor had nine children with Jennie and had been an invalid for several years prior to his death.<sup>14</sup> Mrs. Proctor had also purchased lots 9-14 of the same block in separate transactions. She sold several of these extra lots to S.E. Guthrie (lots 9-11 October, 1915).<sup>15</sup> It is believed Mrs. Proctor built the home at 4200 Duval between April of 1915 and February of 1916. The funds for the construction of the house could have been from life insurance from her husband's death and/ or the sale of the additional properties.

The Austin City Directory of 1916 indicates the first occupation of a residence at 4200 Duval Street (lots 15 and 16 Block B of the Statesman Addition) by Mrs. Jennie Proctor ; Miss Mary E. Proctor - stenographer for the firm of Bennet, Scott, Bibb, and Mathis; and Miss Willie M. Proctor - a clerk for S.H. Kress & Co.<sup>16</sup>

C. E. Straub. In February of 1916 a warranty deed was executed by Jennie Proctor as grantor of lots 15 and 16 of the Statesman Addition and C.E. Straub as grantee secured by a vendor's lien funded by W.T. Caswell. Mrs. Proctor received \$400 cash and a note for \$2350 payable in \$25 monthly increments at 8% interest.<sup>17</sup> This increase in the property value and the City Directory listing of the Proctor's residence in 1916 indicate the date of construction for the Proctor-Evans-Otting Home some time between April of 1915 and February of 1916. Although Travis County Appraisal District (TCAD) records indicate an

<sup>7</sup> The Austin Daily Statesman, February 13, 1910, pg. 10

<sup>8</sup> Busfield, pg. 109

<sup>9</sup> Ibid, pg. 112

<sup>10</sup> Travis County Clerk Records, Property Records, Vol. 247, pg. 157

<sup>11</sup> Austin City Directory, 1912-1913

<sup>12</sup> Austin History Center, "Travis County - Texas Teachers Daily Register" File

<sup>13</sup> Travis County Clerks Records, Property Records, Vol. 274, pg. 571

<sup>14</sup> Austin American, March 12, 1915,

<sup>15</sup> Travis County Clerks Records, Property Records, Vol. 277, pg. 274

<sup>16</sup> Austin City Directory, 1916

<sup>17</sup> Travis County Clerk Records, Property Records, Vol.285, pg.289

improvement date of 1912, this year coincides with sewage and street improvement assessments made by the City of Austin. The 1918 City Directory lists C.E. Straub as the Chief Clerk Cashier for the International and Great Northwestern Railroad (I&GNRR).<sup>18</sup> The I&GNRR was a principal railroad company in Austin with an impressive depot which once stood at 301 W. 3<sup>rd</sup> Street.<sup>19</sup> County records indicate that W.T. Caswell financed Straub's purchase of the property in 1916. It is uncertain whether C.E. Straub ever resided in the home at 4200 Duval.

**William H. and Mamie Dodson.** The city directory list William H. Dodson and wife Mamie L. Dodson as the residents of 4200 Duval in 1918.<sup>20</sup> From 1914 through 1935 Dodson held various positions with Quality Mills, a manufacturer of grain products and sawmill, including local manager, secretary, and treasurer.<sup>21</sup> Quality Mills was located on the southwest corner Nueces and W. 3<sup>rd</sup> Street at 208 Nueces. Quality Mills used diesel engine power to operate grain separators, mill rollers, aptivators, bolters, and a hammer driver in the manufacturing of "Quality" and "Seguin" flour.<sup>22</sup>

**William Thomas Caswell.** In August 1918 C.E. Straub's promissory note to W.T. Caswell was released and Caswell briefly took ownership of the property.<sup>23</sup> W.T. Caswell was one of Austin's leading citizens of his time. His contributions to Austin's history include the development of Ridgetop Subdivision, Austin Athletic Club, and the W.T. Caswell Tennis Center among others.<sup>24</sup> W.T. Caswell was part founder and owner of Austin Oil Manufacturing Company in partnership with his father D.H. Caswell and brother D.H. Caswell, Jr.<sup>25</sup> Austin Oil Manufacturing occupied several blocks at E. 5<sup>th</sup> and Chicon and processed products from cotton seeds including cooking and salad oils, soap, and seed meal for high protein live stock feed. A building at 2012 E. 6<sup>th</sup> Street was once part of Austin Oil Manufacturing Company.<sup>26</sup> Also associated with Austin Oil Manufacturing was the W.T. Caswell Lumberyard as pictured in *The Violet Crown*.<sup>27</sup> Within the same month he took ownership of the property, August 1918, Caswell sold the property to Charles Adkins.<sup>28</sup>

**Charles and Marguerite Adkins.** Charles Adkins and his wife Marguerite were entrepreneurial real estate developers. They are associated with building properties in College Court, an area just south of the subject property, as well as managing others such as 4200 Duval.<sup>29</sup> Mr. Adkins also worked as a linotype operator and printer for the *Austin Statesman* from 1916-1918.<sup>30</sup> In the 1920's he became a

---

<sup>18</sup> Austin City Directory, 1918

<sup>19</sup> Austin: City of the Violet Crown. Austin Chamber of Commerce, 1924. pg.44

<sup>20</sup> Austin City Directory, 1918

<sup>21</sup> Austin History Center, Austin Files, Mills MS400

<sup>22</sup> *Ibid*

<sup>23</sup> Travis County Clerk Records, Property Records, Vol.314, pg.209

<sup>24</sup> *Austin American*, January 12, 1962

<sup>25</sup> Austin History Center, Austin Files, Mills MS400

<sup>26</sup> *Ibid*

<sup>27</sup> Templeman and Reissig, Austin, Texas: The City of the Violet Crown, E.L. Stack Publishing, 1917. Pg.42

<sup>28</sup> Travis County Clerk Records, Property Records, Vol. 314, pg. 320

<sup>29</sup> Historic Landmark Narrative, Adkins-Tharp House, 2003

<sup>30</sup> Austin City Directory, 1916 and 1918

health and accident insurance agent with offices in the Littlefield Building.<sup>31</sup> Mr. Adkins secured the property by paying C.E. Straub's \$2000 note to satisfy the vendor's lien held by W.T. Caswell.<sup>32</sup>

**Miss Margaret Elizabeth Stiles and Mr. Edmund Bell Stiles.** In August of 1919 Miss Margaret Stiles, "a femme sole", and Edmund Stiles, "a single man", purchased the home and property at 4200 Duval from the Adkins. The property was secured through a warranty deed with \$760 paid in cash and promissory note for \$3000 payable at \$50 per month at 8% interest.<sup>33</sup> Although the direct relationship between Miss Margaret E. Stiles and Edmund B. Stiles could not be determined it is suggested that they are probably aunt and nephew. Both are members of the early Austin Stiles and Bell families who were prominent in the First Presbyterian Church of Austin.<sup>34</sup> Miss Margaret Stiles was the daughter of Mr. William Stiles and Mrs. Margaret Stiles and sister of Texas surveyor Arthur Alford Stiles.<sup>35</sup> Miss Margaret Stiles was the secretary to the director of the Bureau of Economic Geology and Technology at the University of Texas.<sup>36</sup> Edmund Stiles is also listed as an "asst economic geology div bureau economic geology and technology U of T".<sup>37</sup>

**Rev. Henry Clay Evans.** The Proctor-Evans-Otting Home ownership passed from Edmund Bell Stiles to

## Texas Presbyterian College



H. C. EVANS, A. M., D. D.

Henry C. Evans in July of 1921 for a price of \$4500.<sup>38</sup> Rev. Henry C. Evans and wife Lida [Lella Verner] are listed as owner/residents of 4200 Duval beginning in the 1922 City Directory of Austin.<sup>39</sup> As a member of the Texas Presbyterian Synod, Rev. Evans was the founding president of the Texas Presbyterian College for Girls in 1902 in Millford, Texas.<sup>40</sup> Under Evan's leadership as president, the small girl's school grew to

become Texas Presbyterian College. "In 1916 the Evans Library was opened at the college in honor of Henry C. Evans. The last major development of Texas Presbyterian College was the formation of the Lella Verner Lodge, a camp two miles from the campus in honor of the president's wife."<sup>41</sup> "Texas Presbyterian College was recognized in 1917-1918 as a standard college by the State Board of Examiners."<sup>42</sup> Following Henry Clay Evan's term as president, Texas Presbyterian College was merged with Austin College of Sherman, Texas. The Evans moved to Austin and the Reverend and Mrs. Evans

<sup>31</sup> *Austin City Directory*, 1920 - 1924

<sup>32</sup> Travis County Clerk Records, Property Records, Vol. 314, pg.320

<sup>33</sup> Travis County Clerk Records, Property Records, Vol. 314, pg.322

<sup>34</sup> First Presbyterian Church of Austin Archives, Stiles Family Records

<sup>35</sup> Austin History Center, Austin Files Biography; Stiles, Arthur A.

<sup>36</sup> *Austin City Directories*, 1918, 1920 and 1922

<sup>37</sup> *Austin City Directory*, 1920

<sup>38</sup> Travis County Clerks Records, Property Records, Vol. 333, pg.30

<sup>39</sup> *Austin City Directory*, 1922

<sup>40</sup> *The Handbook of Texas Online*, [http://www.tsha.edu/handbook/online/articles/TT/kbt21\\_print.html](http://www.tsha.edu/handbook/online/articles/TT/kbt21_print.html)

<sup>41</sup> *ibid*

<sup>42</sup> *ibid*

owned the owned the Proctor-Evans-Otting home from July of 1921 through May of 1928. The Evans resided at 4200 Duval until 1924 when the property was presumably rented to Max R. Nitschke.<sup>43</sup>

**Max R. Nitschke.** The 1924 Austin City Directory lists the residents of 4200 Duval: Max R. Nitschke, carpenter Driskill Hotel; and Ivor E. Nitschke, picture framer Jordan Co.<sup>44</sup> The 1927 Directory also lists Birdie E. Nitschke as the wife of Max and Ivor employed as a clerk for C.A. Bradford Co.<sup>45</sup>

**Henry and Lillie Maerki.** County records indicate that Henry C. Evans and wife Lida (Leila) residents of Alachua County, Florida, sold the Proctor-Evans-Otting House to Henry Maerki and wife Lillie for \$4500 in May of 1928.<sup>46</sup> The 1928 City Directory indicates the Maerki family resided at 4200 Duval.<sup>47</sup> Henry Maerki "was born in Windisch, Canton Argau, Switzerland on July 2, 1871 and came to Austin in 1890 where he began working at the Lundberg Bakery on Congress Avenue. When Charles Lundberg died in 1895 Henry Maerki and partner J. Jaccard bought the bakery from Lundberg's widow.<sup>48</sup> In 1906 Maerki sold the Lundberg bakery and established the Maerki Baking Company at the corner of West Sixth and Rio Grande Streets.<sup>49</sup> He later sold the bakery business to the Buttercrust Baking Company. He was a member of the Evangelical Free Church and was on the Boards of Trustees and Deacons."<sup>50</sup> Henry and wife Lillie Otting Maerki had two daughters, Mrs. Minna Mae Sterzing of Austin and Mrs. Dorothy Criswell of Fort Worth; one son, Stanley Maerki of San Antonio.<sup>51</sup>

**Alvah and Lottie May Otting.** By 1929 it appears Henry Maerki loaned or rented the home to his wife's brother and sister-in-law Lottie May and Alvah Otting.<sup>52</sup> In April of 1933 the Ottings purchased the home from their relatives, Henry and Lillie Otting Maerki, for \$3445.<sup>53</sup> Alvah Otting's obituary records,

"Born Dec 1, 1889, in Falls City, Neb., he had lived most of his life in Austin. For many years general agent for Great Northern Life Insurance Company, he had been connected with the US Public Health Department. He was a 32<sup>nd</sup> Degree Mason and Shriner."<sup>54</sup>

Lottie Otting was a homemaker who was very active in her church and extended family's activities.<sup>55</sup> Mary Bradshaw recalls memories of her aunt Lottie, "many family activities took place here and centered around the large dining room. The little house in back was reportedly the cook's house."<sup>56</sup> Lottie Otting

<sup>43</sup> Austin City Directories, 1921, 1922, 1924

<sup>44</sup> Austin City Directory, 1924

<sup>45</sup> Austin City Directory, 1927

<sup>46</sup> Travis County Clerks Records, Property Records, Vol. 417, pg. 133

<sup>47</sup> Austin City Directory, 1928

<sup>48</sup> Austin American Statesman. Austin Files. Maerki Family. Austin History Center

<sup>49</sup> *ibid*

<sup>50</sup> The Austin American, Deaths and Funerals, March 26, 1952, pg. 24

<sup>51</sup> *ibid*

<sup>52</sup> Austin City Directory, 1929; and Austin Statesman, Obituary, March 11, 1948

<sup>53</sup> Travis County Clerk Records, Property Records, Vol. 490, pg. 72

<sup>54</sup> Austin Statesman, Obituary, March 11, 1948

<sup>55</sup> Personal Interview with Mary Bradshaw of Austin, September, 2007

<sup>56</sup> The 1992 Historic Hyde Park Homes Tour, Hyde Park Neighborhood Association tour brochure 1992

continued to live in the house following her husband's death in 1948 until the late 1970's. Mrs. Otting died at the age of 89 on July 12, 1982.<sup>57</sup> She lived in the home for more than 50 years.

**Aldridge and McFarland Families.** The Proctor-Evans-Otting Home ownership passed to John S. and Brigid M. Aldridge in the early 1980's.<sup>58</sup> In July of 1983 the home ownership again transferred to Samuel R. and Carolyn A McFarland.<sup>59</sup> Following Samuel McFarland's death in June of 1989 maintained ownership of the home which was rental property at the time.

In the early 1990's Carolyn McFarland undertook a major restoration of the property to create a home for herself. Mrs. McFarland hired historic reconstruction contractor Stan Kozinski to plan and execute the project. The restoration included a new foundation, replacement of all mechanical systems (plumbing, electrical, sheet rocking, roofing, central heat and air conditioning), in addition to historically sensitive painting and reconstruction of the front porch.<sup>60</sup> Concerning the restoration of the Proctor-Evans-Otting home, Peter Flagg Maxson, local architecture historian remarks, "It is pleasant architecturally and I've long admired its dark green paint, beige trim and black screens. I don't know if it's always been painted those colors, but it's an excellent period color scheme that was popular in the 1920s."<sup>61</sup>



#### **The Craftsman Bungalow in Hyde Park**

The Proctor-Evans-Otting Home exemplifies the Arts and Crafts bungalow style of the Craftsman Movement of the early 20<sup>th</sup> Century. The Craftsman Bungalow "was typically a single story house with one or more broadly pitched, overhanging gables. A smaller gable cap covered the entry porch; brackets offered support for the broad overhangs, and stone foundations and fireplaces are also typical. The exterior walls were usually clad with narrow, drop pattern clapboard or with a natural stucco skin."<sup>62</sup> A bungalow's main features are: (1) a low pitched, gabled roof (occasionally hipped) with a wide unenclosed eave overhang, (2) decorative (false) beams or braces added under the gables, (3) porches, either full- or partial-width, with the roof supported by tapered square columns, and (4) columns or pedestals that frequently extend to the ground level."<sup>63</sup>

<sup>57</sup> *Austin American Statesman*, Deaths and Funerals, July 14, 1982, pg. 88

<sup>58</sup> Travis County Clerks Records, Property Records, Book 6914, pg. 2062; and Book 6937, pg. 1251

<sup>59</sup> Travis County Clerks Records, Property Records, Book 8214, pg. 744

<sup>60</sup> Personal interview with Carolyn McFarland, 2007; and *The 1992 Historic Hyde Park Homes Tour*, Hyde Park Neighborhood Association tour brochure .1992

<sup>61</sup> Maxson, Peter Flagg. E-mail correspondence, December 2007.

<sup>62</sup> Williams, Kim A. "Architectural Style in Hyde Park". *Hyde Park Historic Homes Tour*. Austin , 1981

<sup>63</sup> Black, Atkinson, and Vernooy, *Hyde Park Compatibility Standards*. Hyde Park Neighborhood Association. Austin History Center - unpublished

The bungalow contributed greatly to the evolution of our contemporary housing as well as providing affordable housing for the emerging middle class of the early 20<sup>th</sup> Century. "It was the bungalow as much as any other kind of house that led to the general adoption of the 'living room' and the 'outdoor-indoor' living space."<sup>64</sup> "The cheapness of the bungalow, first of all, gave people a chance to live in the idealized 'country' and commute to the city, rather than taking advantage of outdoor life only on the weekends. Secondly, the bungalow was so flexible that it could adapt to a variety of sites and exterior styles, suiting both the neighborhood and the individual. Thirdly, this was a period of rapid growth in many areas of the United States. Home ownership doubled from 1880 to 1920 in the United States... Hyde Park as one of Austin's first suburbs was part of this growth; as a suburb with narrow lots, a hot climate, and middle-class homeowners, Craftsman houses were especially suitable."<sup>65</sup>

"The story of Hyde Park architecture is the story of bungalows. Hyde Park is a Craftsman Neighborhood."<sup>66</sup> In Hyde Park the bungalow is "the largest proportion of any single style of house ... Although Hyde Park began as a late-Victorian suburb with many fine Victorian houses, the dominate house type is clearly the Craftsman house, or a bungalow. It dominates not only in number, but also in its dispersal throughout the neighborhood, its influence on later houses, its perseverance, and its long-lasting popularity."<sup>67</sup> Teas concludes, "The fact that the Craftsman homes are not as old as the Victorian houses should not diminish their importance to historians and preservationists in Hyde Park."<sup>68</sup>



The Proctor-Evans-Otting home is situated on a prominent corner which serves as a gateway to the heart of Hyde Park. The home on the corner of Duval and 42<sup>nd</sup> Street is strategically situated on the lot to welcome visitors through the eastern gateway to Hyde Park.

#### **Architectural Attributes of the Proctor-Evans-Otting Home**

The Craftsman bungalow characteristics exhibited by the Proctor-Evans-Otting Home present a textbook example of the Arts and Crafts Style.

Expressing the horizontality of the house – an essential element of the bungalow style – are the low spreading, multiple hip roof with wide eaves; wide porch beam; horizontal six-paned tympanum window; half height column supports and tapered columns; and lower piers hidden by skirting. Triangular knee braces appear to support the wide overhang of the eaves. Below the eaves the house body is covered with horizontally oriented clapboard of Calcasieu pine.

Single and grouped double-hung windows with multiple vertical panes over a single pane add an individual style to the home within the Craftsman vernacular. Shingle siding in the tympanum of the front porch and rear gables also add to the home's individualism within the style.

<sup>64</sup> Whiffen, Marcus. American Architecture Since 1780: A Guide to Styles. Cambridge, Mass.: The MIT Press, 1969

<sup>65</sup> Teas, Wendy Ann. The Bungalows of Hyde Park. Graduate Thesis: Austin History Center. May, 1987

<sup>66</sup> Teas, Wendy Ann. The Bungalows of Hyde Park. Graduate Thesis: Austin History Center. May, 1987

<sup>67</sup> *ibid*

<sup>68</sup> *ibid*



The front door of the home features a triple light with beveled glass separated by wood mullions and decorative woodwork below the window. Flanking the door are sidelights and decorations which mirror the front door. The original mail slot is in the wood panel of the left sidelight panel. Broad steps lead to the front porch which is enclosed by a square balustrade railing.

A small one-story carport and accessory room is located at the rear of the property. The small room is balloon type construction with board and batten siding. It has been reported to be the cook's room.

Although the original paint scheme was not determined at the time of restoration, the exterior is painted in an Arts and Crafts palette appropriate for the period. The exterior clapboard is painted emerald green. The wood trim is antique white. The widow and door screens are a traditional black.

The interior of the home is a typical craftsman floor plan with functionality as its primary purpose. All rooms have original aniline stain finished or painted old growth pine woodwork. From the front door the rooms on the north side of the home are the living room, dining room, kitchen and mud porch. In the dining room is a built in sideboard in the Craftsman tradition. To the south of these rooms are two bedrooms separated by a hallway and bathroom. The sleeping porch is the southernmost room off the master bedroom.

On the floor of the master bedroom is the impression of *The Austin Tribune* newspaper from Wednesday, December 2, 1942. The newsprint of the paper was transferred to the finish and is preserved as a mirror image of the World War II period newspaper. Although the Austin History center has a collection of *The Austin Tribune*, the collection does not include this issue. This is probably the last surviving image of this particular issue. Due to the war and rationing *The Austin Tribune's* last issue was Tuesday, December 29, 1942.<sup>69</sup>

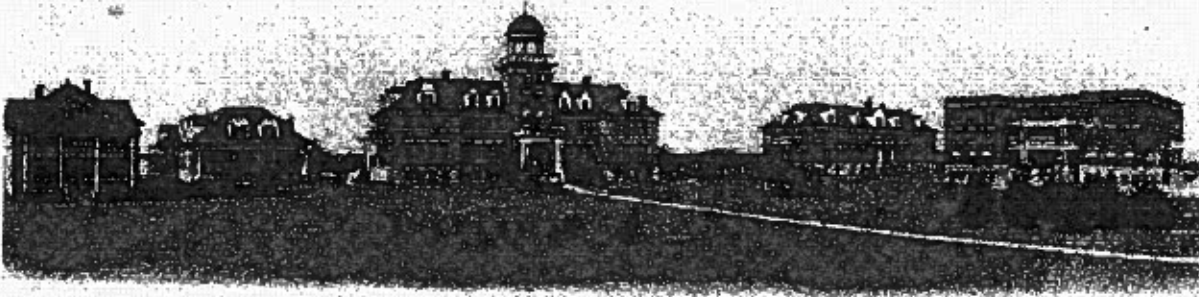
**Landscape Features.** The subject property at 4200 Duval contains several tree specimens of significance. A row of pecan trees line the 42<sup>nd</sup> Street side of the lot. The largest of these which is on the corner of 42<sup>nd</sup> and Duval has a circumference of 82" at 3' above the ground. The other pecans are 68", 46", and 60" in circumference. A lone pine tree sits within the line of pecans. One large pecan tree over 89" in circumference is in the back yard behind the house.



---

<sup>69</sup> *The Austin Tribune*. Vol.XI No.6. December 29,1942. Austin History Center Archives

# Texas Presbyterian College



HENRY C. EVANS, A. M., D. D.  
PRESIDENT

Wilmington, Texas, April 19th '15.

Mr. John B. Cavitt,  
Marlin, Texas.

Dear Mr. Cavitt: Your letter with the copy of the fire escape law was received this morning. I have written to Dr. Hill today and sent the copy to him, with the suggestion that he have some Dallas firm make an estimate on the fire escapes for the rest of our buildings so that we might have something definite before us at commencement.

Mrs. Evans wants me to say that we expect you and Norman to be our guests at Commencement. We have plenty of room this year. Will you kindly pass the word to Norman. Please tell him he has gotten out of helping with the honeysuckle long enough. We shall expect him.

The time is getting short now and the weeks are fleeing by, so the girls tell us.

Thanking you for the copy of the law and with best wishes,

I am sincerely yours,

*Henry C. Evans*

*Another big rain today  
few water in barrels*



Funeral Home of Lockwell

### ALVAH OTTING

Alvah Otting, 58, died at his home, 4200 Duval, Wednesday after a lingering illness. Otting, who had lived most of his life in Austin, was the general agent for the Great Northern Life Insurance company and for the past five years had been connected with the US Public Health Department. He was a 2nd degree Mason and a Shriner.

Survivors are his widow, Mrs. Lulu Otting, two sisters, Mrs. Henry Maeski of Austin and Mrs. Daisy Sailors of Los Angeles, Calif., and his brother, Harry Otting of Los Angeles, Calif.

Funeral services will be conducted at the Hyatt Funeral Home Thursday at 3 p. m. with Dr. Eidson officiating. Burial will be in Memorial Park. Pallbearers will be Travis Wallace, Herbert Quick, Louis Ogden, B. B. Priest, Allen McFadden Sr. and R. C. Ellis.

**OTTING**—Alvah Otting, 58, died at his home, 4200 Duval Street, after a lingering illness. Born Dec. 1, 1889, in Falls City, Neb., he had lived most of his life in Austin. For many years general agent for Great Northern Life Insurance Company, he had been connected with the US Public Health Department. He was a 2nd Degree Mason and Shriner. Besides his widow, Mrs. Lulu Otting, he is survived by two sisters, Mrs. Henry Maeski of Austin, and Mrs. Daisy Sailors of Los Angeles, Calif., and a brother, Harry Otting, also of Los Angeles, as well as several nieces and nephews. Funeral services will be held at the Hyatt Funeral Home chapel Thursday at 3 p. m. with Dr. Eidson officiating. Pallbearers will be Travis Wallace, Herbert Quick, Louis Ogden, B. B. Priest, Allen McFadden, R. C. Ellis, Charlie Bus- tin. Burial will be in Memorial Park.

Obituaries of Alvah Otting  
Austin newspapers  
March 10-11, 1948

**Lutie Mae Otting**

Lutie Mae Otting, 89, of 503 Honeycomb Ridge, died Monday.

Graveside services 10:00 AM Wednesday at Austin Memorial Park with Dr. Ralph Smith of Hyde Park Baptist Church officiating.

Survivors include: sister, Mrs. Frances Morgan of Austin; nephews, Leonard Hays of Huntsville, Alabama, Wayland Ellis of Denham Springs, Louisiana, Clay Price, Dan Ellis of Ft. Worth, Bill Ellis, San Jose, California, Bob Lockett, Austin; neices, Lenora Hays of Sioux City, Iowa, Virginia Wells, Fanny Lou Roddy, and Lanelle Ezelle, all of Austin. Hyatt-Manor Funeral

Chapel.

Obituary of Lutie Mae Otting  
Austin American-Statesman  
March 14, 1982

OK to go  
SS

## A. APPLICATION FOR HISTORIC ZONING

### PROJECT INFORMATION:

ROW ID 10128605

DEPARTMENTAL USE ONLY	
APPLICATION DATE: <u>03/25/08</u>	FILE NUMBER(S): <u>C14H 2408-604</u>
TENTATIVE HLC DATE: _____	
TENTATIVE PC or ZAP DATE: _____	
TENTATIVE CC DATE: _____	
CASE MANAGER: <u>Steve S.</u>	CITY INITIATED: YES / NO
APPLICATION ACCEPTED BY: <u>SP</u>	ROLLBACK: YES/NO

### BASIC PROJECT DATA:

1. OWNER'S NAME: <u>Carolyn McFarland</u>	
2. PROJECT NAME: <u>Practon-EVANS - Cottage Home</u>	
3. PROJECT STREET ADDRESS (or Range): <u>4200 / Duval St., Austin</u>	
ZIP: <u>78751</u>	COUNTY: <u>Texas</u>
IF PROJECT ADDRESS CANNOT BE DEFINED ABOVE:	
LOCATED _____ FRONTAGE FEET ALONG THE N. S. E. W. (CIRCLE ONE) SIDE OF	
(ROAD NAME PROPERTY FRONTS ONTO), WHICH IS	
APPROXIMATELY _____	DISTANCE FROM ITS
INTERSECTION WITH _____	CROSS STREET.

### AREA TO BE REZONED:

4. ACRES _____	(OR)	SQ. FT. <u>6,600</u>			
5. ZONING AND LAND USE INFORMATION:					
EXISTING ZONING	EXISTING USE	TRACT# (IF MORE THAN 1)	ACRES / SQ. FT.	PROPOSED USE	PROPOSED ZONING
<u>SF-3-NCD</u>	<u>SF-3-NCD</u>	_____	<u>6,600</u>	<u>H-SF-3-NCD</u>	<u>H-SF-3-NCD</u>
_____	_____	_____	_____	_____	_____

### RELATED CURRENT CASES:

6. ACTIVE ZONING CASE? (YES / NO)	FILE NUMBER: _____
7. RESTRICTIVE COVENANT? (YES / NO)	FILE NUMBER: _____
8. SUBDIVISION? (YES / NO)	FILE NUMBER: _____
9. SITE PLAN? (YES / NO)	FILE NUMBER: _____

PROPERTY DESCRIPTION (SUBDIVISION REFERENCE OR METES AND BOUNDS):

10a. SUBDIVISION REFERENCE: Name: Statesman Addition to Hyde Park  
Block(s) B Lot(s) 15 & 16 Outlot(s) \_\_\_\_\_  
Plat Book: Vol. 2 Page 201  
Number: 201  
10b. METES AND BOUNDS (Attach two copies of certified field notes if subdivision reference is not available or zoning includes partial lots)

DEED REFERENCE CONVEYING PROPERTY TO PRESENT OWNER AND TAX PARCEL I.D.:

11. VOLUME: 11093 PAGE: 00295 TAX PARCEL I.D. NO. 02-2008-0214-0000

OTHER PROVISIONS:

12. IS PROPERTY IN A ZONING COMBINING DISTRICT / OVERLAY ZONE? YES / NO  
TYPE OF COMBINING DIST/OVERLAY ZONE (NCCD, NP, etc) NCCD HYDE PARK WRHD  
13. LOCATED IN A LOCAL OR NATIONAL REGISTER HISTORIC DISTRICT? YES / NO Residential Design Standards  
14. IS A TIA REQUIRED? YES NO (NOT REQUIRED IF BASE ZONING IS NOT CHANGING)  
TRIPS PER DAY: \_\_\_\_\_  
TRAFFIC SERIAL ZONE(S): \_\_\_\_\_

OWNERSHIP TYPE:

15. ☒ SOLE ☐ COMMUNITY PROPERTY ☐ PARTNERSHIP ☐ CORPORATION ☐ TRUST  
If ownership is other than sole or community property, list individuals/partners/principals below or attach separate sheet.

OWNER INFORMATION:

16. OWNER CONTACT INFORMATION  
SIGNATURE: Carolyn A. McFarland NAME: Carolyn Aldridge McFarland  
FIRM NAME: \_\_\_\_\_ TELEPHONE NUMBER: 512-451-9755  
STREET ADDRESS: 4200 Duval St.  
CITY: Austin STATE: TX ZIP CODE: 78751  
EMAIL ADDRESS: carolynmcfar@skglobal.net

AGENT INFORMATION (IF APPLICABLE):

17. AGENT CONTACT INFORMATION  
SIGNATURE: R. Soileau NAME: Randall Soileau  
FIRM NAME: \_\_\_\_\_ TELEPHONE NUMBER: 495-9238  
STREET ADDRESS: 506 Bellevue St  
CITY: Austin STATE: TX ZIP CODE: 78705  
CONTACT PERSON: Randall Soileau TELEPHONE NUMBER: 495-9238  
EMAIL ADDRESS: Public.caddy@swbell.net

DEPARTMENTAL USE ONLY: \_\_\_\_\_

## D. SUBMITTAL VERIFICATION AND INSPECTION AUTHORIZATION

### SUBMITTAL VERIFICATION

My signature attests to the fact that the attached application package is complete and accurate to the best of my knowledge. I understand that proper City staff review of this application is dependent upon the accuracy of the information provided and that any inaccurate or inadequate information provided by me/my firm/etc., may delay the proper review of this application.

PLEASE TYPE OR PRINT NAME BELOW SIGNATURE AND  
INDICATE FIRM REPRESENTED, IF APPLICABLE.

R. Soileau 2.5.08  
Signature Date

RANDALL SOILEAU  
Name (Typed or Printed)

\_\_\_\_\_  
Firm (If applicable)

### INSPECTION AUTHORIZATION

As owner or authorized agent, my signature authorizes staff to visit and inspect the property for which this application is being submitted.

PLEASE TYPE OR PRINT NAME BELOW SIGNATURE AND  
INDICATE FIRM REPRESENTED, IF APPLICABLE.

Carolyn A. McFarland 2/11/08  
Signature Date

Carolyn A. McFarland  
Name (Typed or Printed)

\_\_\_\_\_  
Firm (If applicable)

## E. ACKNOWLEDGMENT FORM

concerning  
Subdivision Plat Notes, Deed Restrictions,  
Restrictive Covenants  
and / or  
Zoning Conditional Overlays

I, Randall Siler have checked for subdivision plat notes, deed restrictions,  
(Print name of applicant)

restrictive covenants and/or zoning conditional overlays prohibiting certain uses and/or requiring certain development restrictions i.e. height, access, screening etc. on this property, located at

4200 Duval St. Austin Tx 78751  
(Address or Legal Description)

High Rise MND NRD Residential Design Standards

If a conflict should result with the request I am submitting to the City of Austin due to subdivision plat notes, deed restrictions, restrictive covenants and/or zoning conditional overlays it will be my responsibility to resolve it. I also acknowledge that I understand the implications of use and/or development restrictions that are a result of a subdivision plat notes, deed restrictions, restrictive covenants and/or zoning conditional overlays.

I understand that if requested, I must provide copies of any and all subdivision plat notes, deed restrictions, restrictive covenants and/or zoning conditional overlay information which may apply to this property.

R. Siler  
(Applicant's signature)

2.5.08  
(Date)

TAX CERTIFICATE  
Nelda Wells Spears  
Travis County Tax Assessor-Collector  
P.O. Box 1748  
Austin, Texas 78767  
(512) 854-9473

NO 611401

ACCOUNT NUMBER: 02-2008-0214-0000

PROPERTY OWNER:

MCFARLAND CAROLYN MARGARET ALD  
MARGARET ALDRIDGE  
4200 DUVAL ST  
AUSTIN, TX 78751-4311

PROPERTY DESCRIPTION:

LOT 15-16 BLK B STATESMAN ADDN

ACRES 0.000 MIN\* .00000 TYPE

SITUS INFORMATION: 4200 DUVAL ST

This is to certify that after a careful check of tax records of this office, the following taxes, delinquent taxes, penalties and interests are due on the described property of the following tax unit(s):

YEAR	ENTITY	TOTAL
2007	AUSTIN ISD	*ALL PAID*
	CITY OF AUSTIN (TRAV)	*ALL PAID*
	TRAVIS COUNTY	*ALL PAID*
	TRAVIS COUNTY HEALTHCARE DISTRICT	*ALL PAID*
	ACC (TRAVIS)	*ALL PAID*

TOTAL SEQUENCE 0

\*ALL PAID\*

TOTAL TAX:  
UNPAID FEES:  
INTEREST ON FEES:  
COMMISSION:  
TOTAL DUE ==>

\*ALL PAID\*  
\* NONE \*  
\* NONE \*  
\* NONE \*  
\*ALL PAID\*

TAXES PAID FOR YEAR 2007 \$5,468.93

ALL TAXES PAID IN FULL PRIOR TO AND INCLUDING THE YEAR 2007 EXCEPT FOR UNPAID YEARS LISTED ABOVE.

The above described property may be subject to special valuation based on its use, and additional rollback taxes may become due. (Section 23.55, State Property Tax Code).

Pursuant to Section 31.08 of the State Property Tax Code, there is a fee of \$10.00 for all Tax Certificates.

GIVEN UNDER MY HAND AND SEAL OF OFFICE ON THIS DATE OF 01/25/2008

Fee Paid: \$10.00

Nelda Wells Spears  
Tax Assessor-Collector

By: 