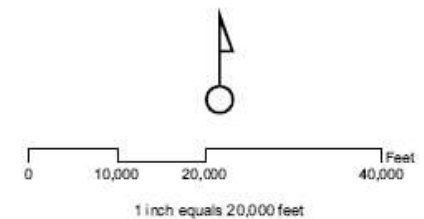
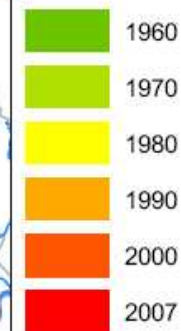


CITY LIMITS

Figure 3-1
Draft - Interim Update to
Austin Tomorrow Comprehensive Plan
City of Austin



City limits have more than doubled since the 1979 Austin Tomorrow Comprehensive Plan was passed. The original map in that plan illustrated 1960 City limits, which encompassed 35,711 acres, or 55.80 square miles. That number almost quintupled by 2007 to 161,190 acres, or 251.86 square miles. The City's population in 1960 was 186,545 persons, which equated to 3,343 persons per square mile. Those same numbers jumped to 735,088 in 2007, or about 2,918 persons per square mile.

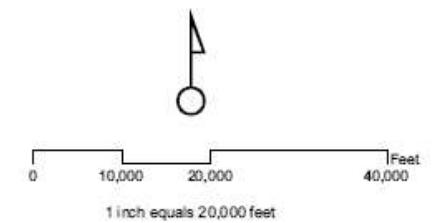
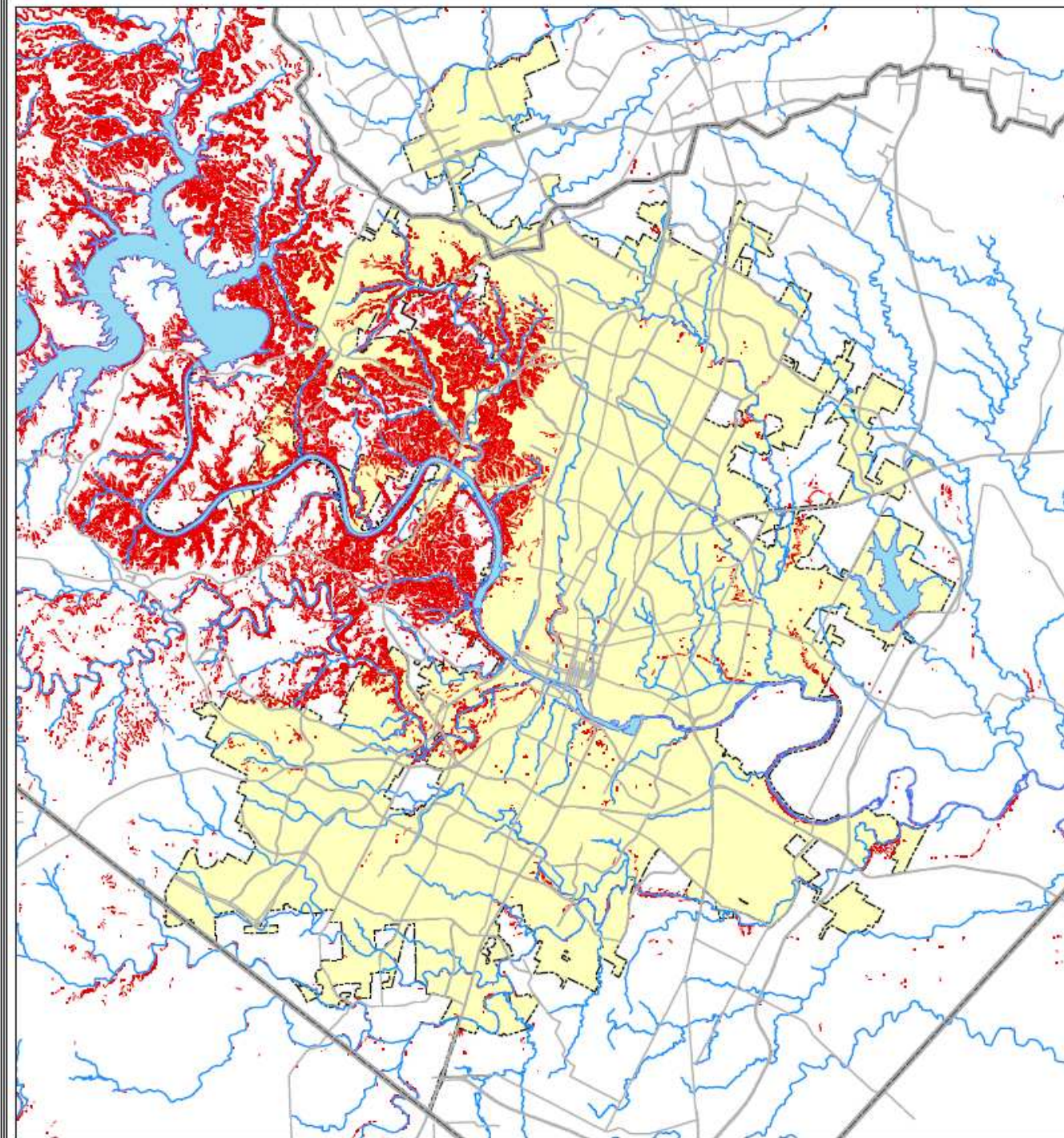


This map has been created for the sole purpose of aiding regional planning and is not warranted for any other use. No warranty is made regarding its accuracy or completeness.

STEEP SLOPES

Figure 3-2
Draft - Interim Update to
Austin Tomorrow Comprehensive Plan
City of Austin




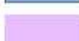

-  Slopes Greater than 15%
-  City of Austin - Full Purpose

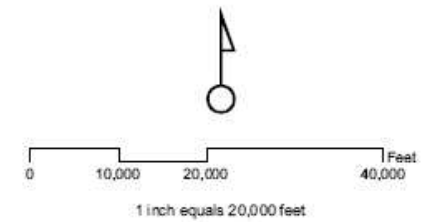
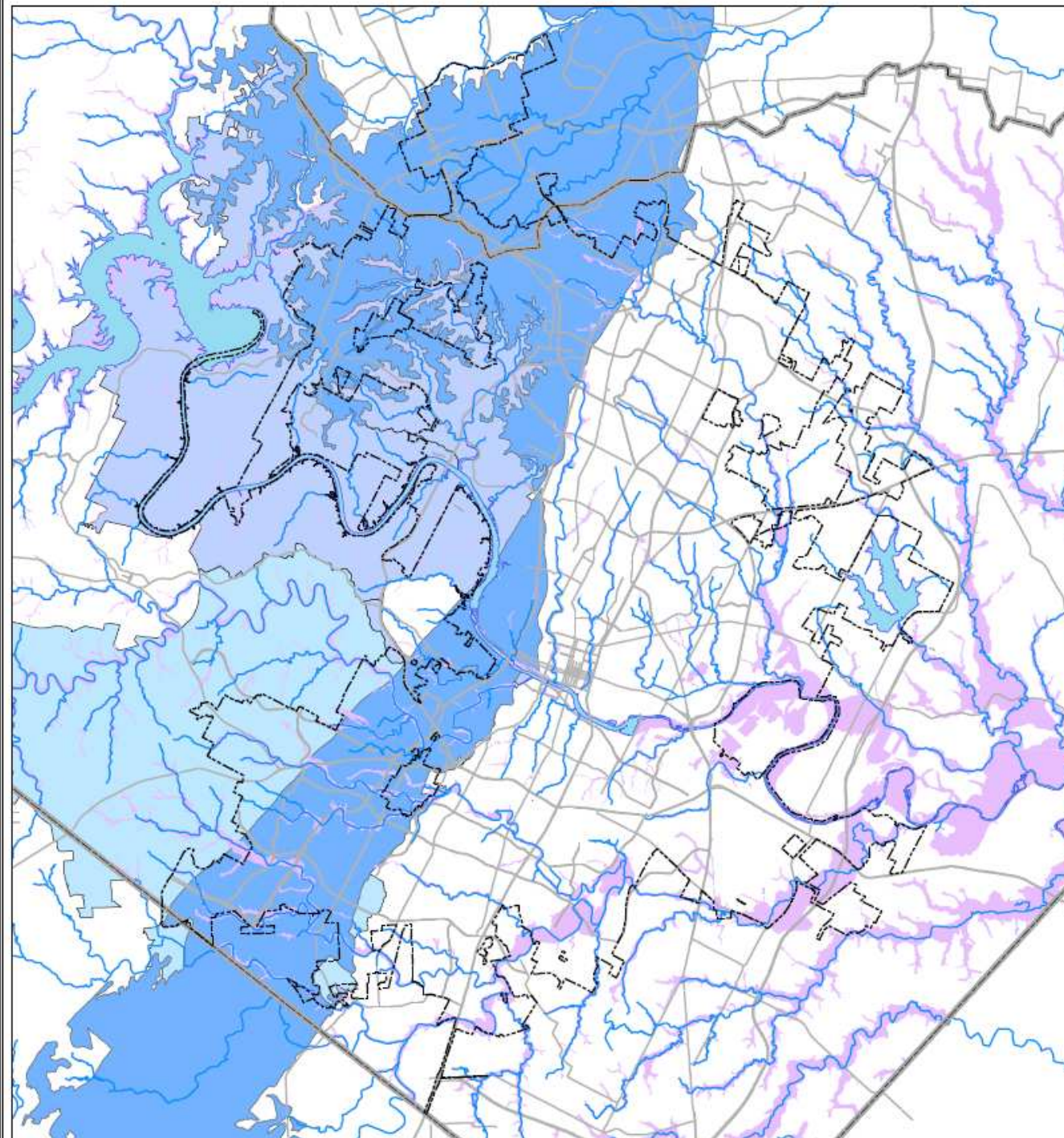


This map has been created for the sole purpose of aiding regional planning and is not warranted for any other use. No warranty is made regarding its accuracy or completeness.

WATER QUALITY AND WATER HAZARD AREAS

Figure 3-5
Draft - Interim Update to
Austin Tomorrow Comprehensive Plan
City of Austin

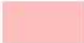
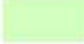

-  Edwards Aquifer Recharge Watersheds
-  Water Supply Watersheds
-  Edwards Aquifer Recharge Zone
-  Proposed FEMA Floodplains
-  City of Austin - Full Purpose

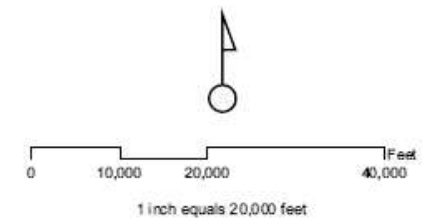
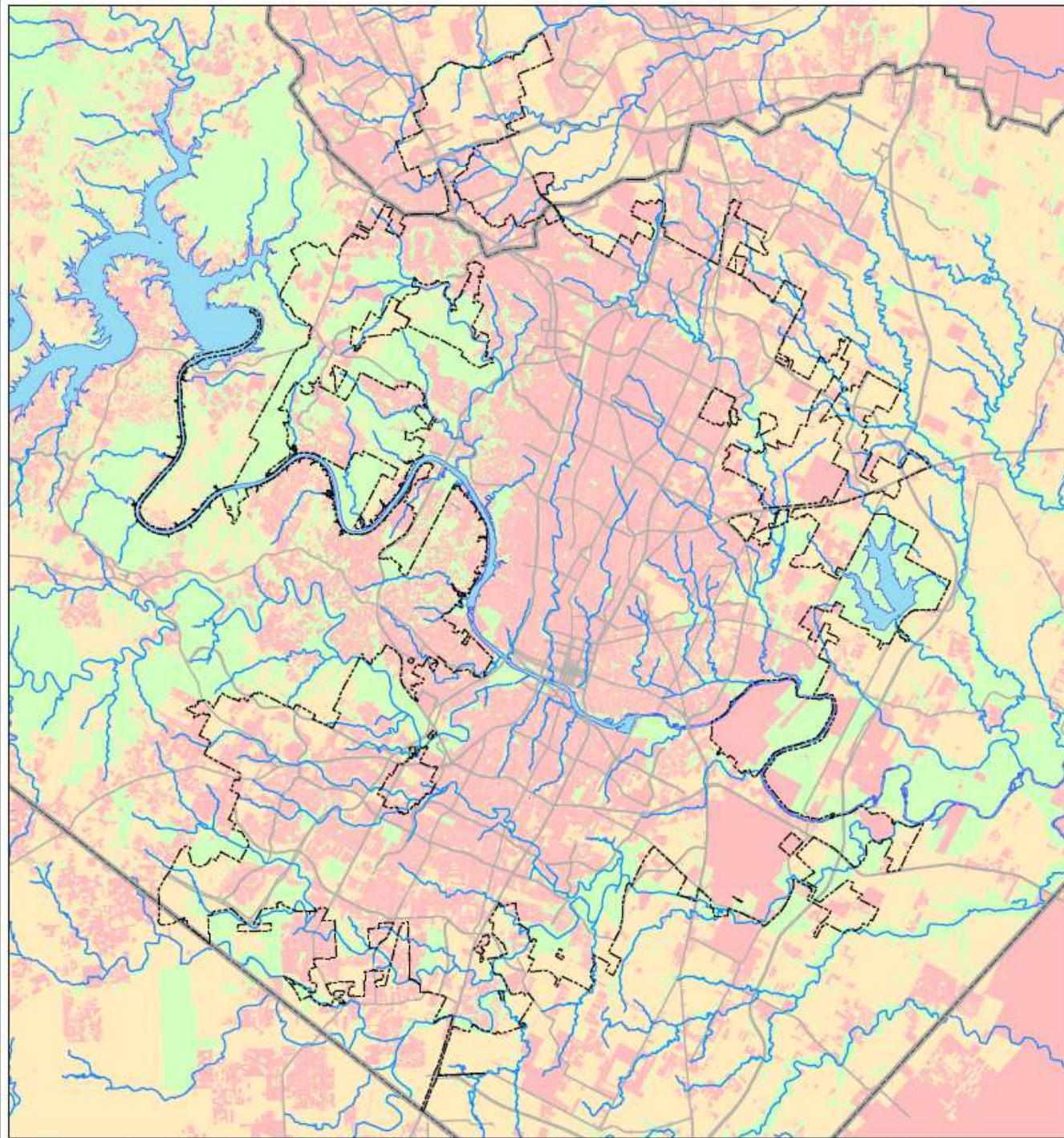


This map has been created for the sole purpose of aiding regional planning and is not warranted for any other use. No warranty is made regarding its accuracy or completeness.

ENVIRONMENTAL DEVELOPMENT LIMITATIONS

Figure 3-7
Draft - Interim Update to
Austin Tomorrow Comprehensive Plan
City of Austin

-  Developed Areas
-  Undeveloped with Limitations
-  Undeveloped without Limitations

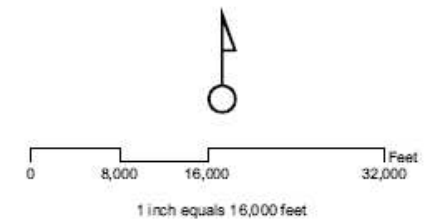
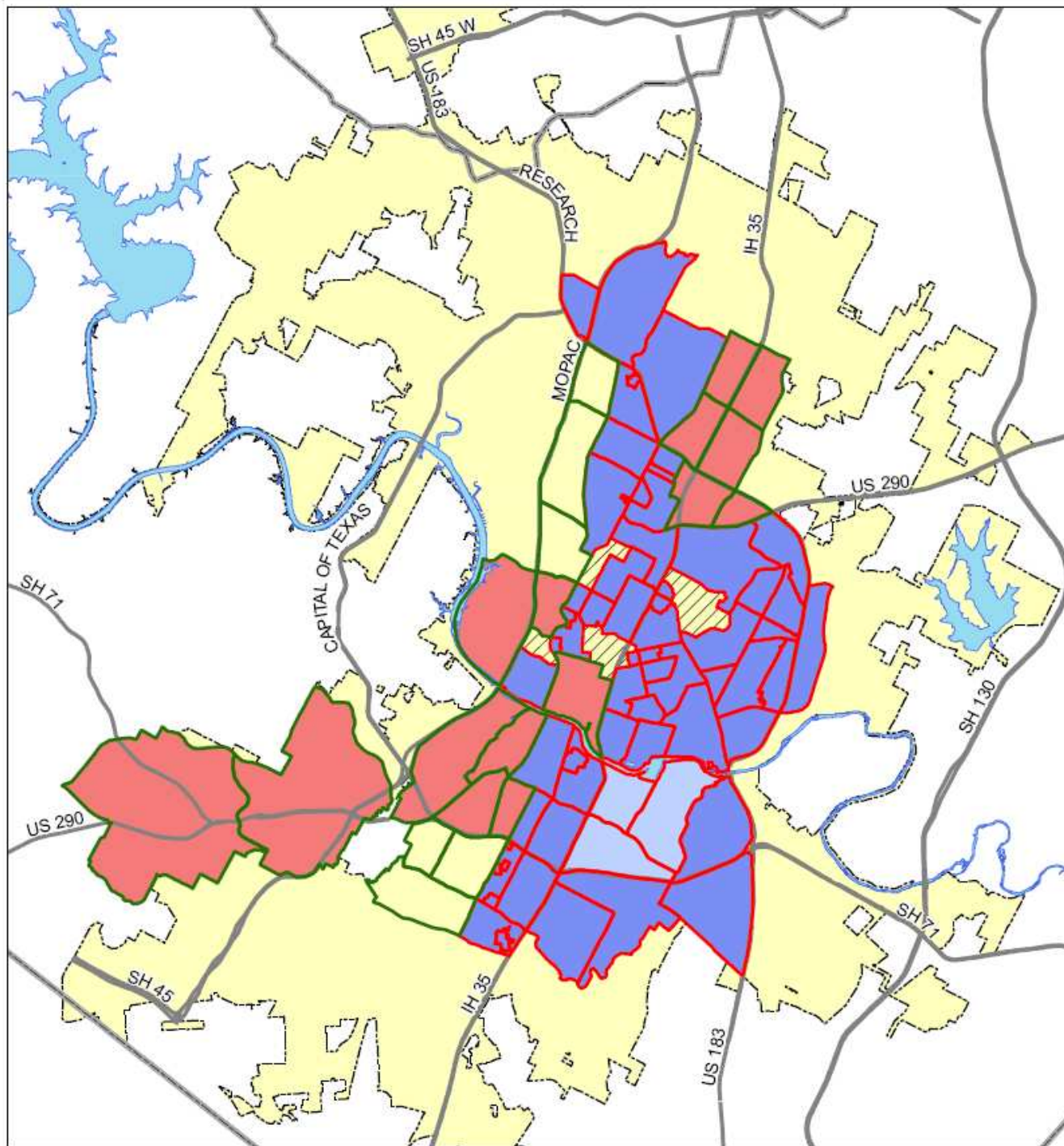


This map has been created for the sole purpose of aiding regional planning and is not warranted for any other use. No warranty is made regarding its accuracy or completeness.

NEIGHBORHOOD PLANNING AREAS

Figure 3-9
Draft - Interim Update to
Austin Tomorrow Comprehensive Plan
City of Austin

-  Neighborhood Planning Areas (NPA)
-  Neighborhood Plan Combining District (NP)
-  Approved With Zoning
-  Plan Partially Approved
-  Planning Underway/Approved to Begin
-  Non-Neighborhood Planning Area
-  Future Plan Areas - Full Purpose Limits



This map has been created for the sole purpose of aiding regional planning and is not warranted for any other use. No warranty is made regarding its accuracy or completeness.

WATERSHED REGULATION

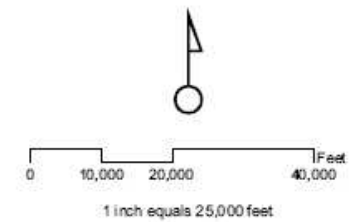
Figure 3-10
Draft - Interim Update to
Austin Tomorrow Comprehensive Plan
City of Austin

Desired Development Zone

- Urban
- Suburban

Drinking Water Protection Zone

- Barton Springs Zone
- Water Supply Suburban
- Water Supply Rural

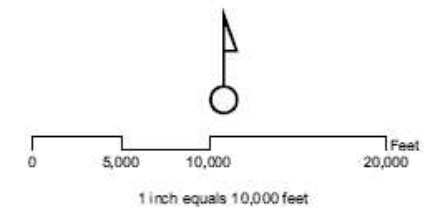


This map has been created for the sole purpose of aiding regional planning and is not warranted for any other use. No warranty is made regarding its accuracy or completeness.

FUTURE LAND USE

New Figure 3-11
Draft - Interim Update to
Austin Tomorrow Comprehensive Plan
City of Austin

- Agriculture
- Rural Residential
- Single-Family
- Higher-Density Single-Family
- Mobile Homes
- Mixed Residential
- Multifamily
- Commercial
- Mixed Use
- High Density Mixed Use
- Warehouse/Limited Office
- Office
- Mixed Use/Office
- Major Planned Development
- Industry
- Major Impact Facilities
- Civic
- Recreation & Open Space
- Environmental Conservation
- Transportation
- Utilities



This map has been created for the sole purpose of aiding regional planning and is not warranted for any other use. No warranty is made regarding its accuracy or completeness.

