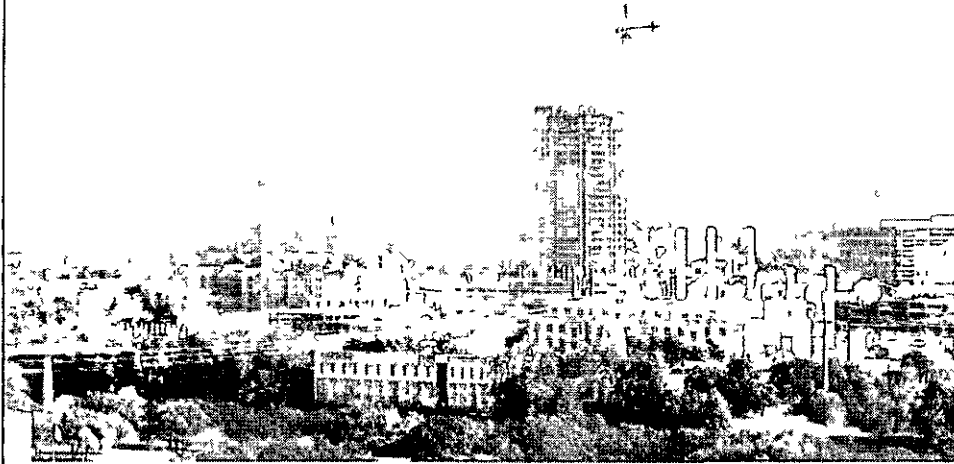


Late Backup

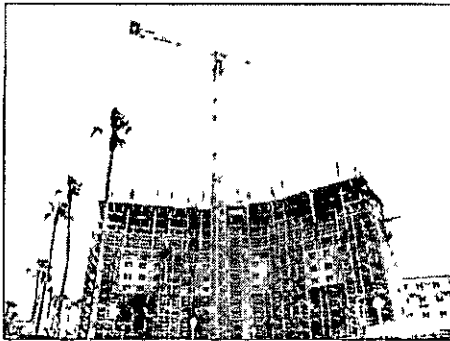
#19

Tower Cranes

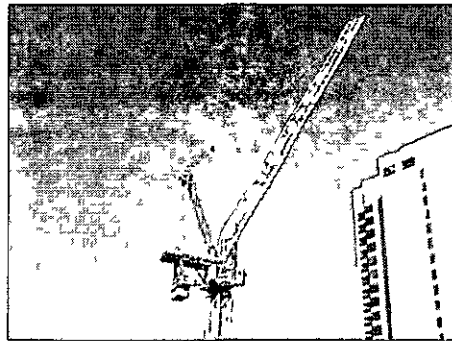


Council Briefing October 2, 2008

Tower Cranes



Hammerhead Type Tower Crane



Luffing Type Tower Crane

Council Resolution 20080807- 049
Direction to City Manager

- Study existing processes to determine where in the development process the City can obtain information relative to crane safety and inspection
- Interim implementation plan by August 28, 2008

Actions Taken in Response to Resolution

Over public property:

- Implementation of License Agreement process that requires
 - Adding City as additional insured to contractor's general liability policy
 - Minimum City liability amount raised from \$500,000 to \$10,000,000
 - Compliance with OSHA guidelines including copies of OSHA required inspections
 - Proof of notification of adjacent property owners
 - Pre-construction meeting

Actions Taken in Response to Resolution

Over private property:

- Prior to the issuance of a building permit, staff will require
 - Compliance with OSHA guidelines including copies of OSHA required inspections
 - Proof of notification of adjacent property owners
 - Approval from the City's Utility Location and Coordination Committee

Council Resolution 20080807- 049 Further Direction to City Manager

- Study best practices nationwide regarding crane safety, inspections and operator certification, including the forthcoming new OSHA guidelines

States Requiring Licensing of Crane Operators

- California
- Connecticut
- Hawaii
- Massachusetts
- Minnesota
- Montana
- Nevada
- Washington (2010)
- New Jersey
- New Mexico
- New York
- Oregon
- Rhode Island
- Utah
- West Virginia

Cities Requiring Licensing of Crane Operators

- Chicago, IL
- Los Angeles, CA (until 2005, after 2005 state regulations apply)
- New Orleans, LA
- New York City, NY
- Washington, DC
- Omaha, NE
- *Austin, TX?*

City and State Licensing Requirement Comparisons

<i>Comparative Safety Requirements - Cities</i>				
	License Operators	3rd Party Licensing	City Inspections	Number of Cranes
Chicago	X	X	X	35
New York City	X		X	34
New Orleans	X	X		2
Omaha	X	X		2

<i>Comparative Safety Requirements - States</i>			
	3rd Party Licensing	State Inspections	Cranes Certified
California (Cal OSHA)	X	X	X
Washington	X	X	X

Proposed OSHA Rules

- Proposed OSHA rules will:
 - Increase requirements on assessing ground conditions
 - Increase regulations on the assembly and disassembly of cranes
 - Increase requirements for operation of cranes near power lines
 - Increase the use of safety devices and inspections of cranes
 - Require certification and training of crane operators

Proposed OSHA Schedule

- To be released for public comment October 3, 2008
- 60 days for public comment
- Public hearing scheduled
- Adoption anticipated sometime in 2009

Recommendations

- License Agreement requirement for tower cranes
 - Implemented August 28, 2008
- Require certification for operators
 - Wait for adoption of OSHA rules
 - Return to Council after adoption of OSHA rules with proposed building code amendments related to certification, if appropriate
- 1 FTE to monitor program and license agreements
 - Use current vacancy in Right-Of-Way Management Division to fill this position
 - Begin tracking in AMANDA

