



MACIAS & ASSOCIATES, L.P.
LAND SURVEYORS

EXHIBIT “ ”

CITY OF AUSTIN
(Wastewater Easement)
October 6, 2008

LEGAL DESCRIPTION

DESCRIPTION OF A 1.197 ACRE (52,146 SQUARE FOOT) TRACT OF LAND OUT OF OUTLOTS 53 & 54 , DIVISION B OF THE GOVERNMENT OUTLOTS ADJOINING THE CITY OF AUSTIN ON FILE IN THE GENERAL LAND OFFICE OF THE STATE OF TEXAS; SAID 1.197 ACRE TRACT ALSO BEING OUT OF A 108.18 ACRE TRACT OF LAND (MORRIS WILLIAMS GOLF COURSE) DESCRIBED IN A WARRANTY DEED DATED JULY 31, 1956 TO THE CITY OF AUSTIN, RECORDED IN VOLUME 1714, PAGE 505, DEED RECORDS OF TRAVIS COUNTY, TEXAS AND ALSO BEING OUT OF A 52.5 ACRE TRACT OF LAND (MORRIS WILLIAMS GOLF COURSE) DESCRIBED IN A WARRANTY DEED DATED APRIL 30, 1957 TO THE CITY OF AUSTIN, RECORDED IN VOLUME 1818, PAGE 519, DEED RECORDS OF TRAVIS COUNTY, TEXAS; SAID 1.197 ACRE (52,146 SQUARE FOOT) TRACT BEING DESCRIBED AS PART ONE CONTAINING 0.062 ACRE (2,680 SQUARE FEET), PART TWO CONTAINING 0.594 ACRE (25,873 SQUARE FEET), PART THREE CONTAINING 0.518 ACRE (22,583 SQUARE FEET) AND PART FOUR CONTAINING 0.023 ACRE (1,010 SQUARE FEET) AS SHOWN ON THE ACCOMPANYING SKETCH, BEING MORE PARTICULARLY DESCRIBED BY METES AND BOUNDS AS FOLLOWS:

PART ONE

BEGINNING at a calculated point having Texas State Plane Grid Coordinate (Central Zone, NAD83/93(HARN), U.S. Feet, Combined Scale Factor 1.00007) values of N=10,078,987.00 E=3,130,589.60, on the curving east right-of-way line of Manor Road, an 80-foot wide right-of-way, and on the west line of said Morris Williams Golf Course, for the west corner of this tract, from said point, a 1/2” iron rod with plastic cap stamped “McGray” found on the west right-of-way line of Manor Road, bears N 25°39’57” E, 844.58 feet, and from said point, a 1/2” rod found on the south right-of-way line of Manor Road, bears S 85°59’21” W, 686.60 feet ;

THENCE, with the curving east right-of-way line of Manor Road and the west line of the Morris Williams Golf Course, along a curve to the left having a radius of 842.43 feet, a central angle of 07°04’46”, a chord which bears N 58°26’10” E, 103.04 feet, an arc distance of 103.11 feet to a calculated point at the west corner of a water easement recorded in Document No. 2003089617, Official Public Records of Travis County, Texas, for the north corner of this tract;

32005WE 1.197 Ac.

THENCE, across said Morris Williams Golf Course, the following three (3) courses:

- 1) S 44°12'47" E, with the southwest line of said water easement, a distance of 37.85 feet to a calculated point for the east corner of this tract;
- 2) S 69°13'55" W, a distance of 114.73 feet to a calculated point for the south corner of this tract;
- 3) N 26°33'08" W, a distance of 15.51 feet to the **POINT OF BEGINNING** and containing 0.062 acre (2,680 square feet) of land.

PART TWO

BEGINNING at a calculated point having Texas State Plane Grid Coordinate (Central Zone, NAD83/93(HARN), U.S. Feet, Combined Scale Factor 1.00007) values of N=10,079,043.04 E=3,130,696.28, on the northeast line of a water easement recorded in Document No. 2003089617, Official Public Records of Travis County, Texas, for the west corner of this tract, from said point, a 1/2" iron rod with plastic cap stamped "McGray" found on the curving west right-of-way line of Manor Road, bears N 20°10'31" E, 751.29 feet, and from said point, a 1/2" rod found on the south right-of-way line of Manor Road, bears S 82°30'38" W, 798.41 feet;

THENCE, across said Morris Williams Golf Course, the following four (4) courses:

- 1) N 69°13'55" E, a distance of 21.61 feet to a calculated point;
- 2) S 49°31'56" E, a distance of 364.74 feet to a calculated point;
- 3) S 45°57'13" E, a distance of 601.69 feet to a calculated point;
- 4) S 36°16'08" E, a distance of 118.62 feet to a calculated point on the northeast line of said water line easement, for the east corner of this tract;

THENCE, continuing across said Morris Williams Golf Course, with the northeast line of said water easement, the following three (3) courses:

- 1) N 46°06'43" W, a distance of 465.11 feet to a calculated point;
- 2) N 48°33'58" W, a distance of 528.40 feet to a calculated point;
- 3) N 44°12'47" W, a distance of 98.93 feet to the **POINT OF BEGINNING** and containing 0.594 acre (25,873 square feet) of land.

PART THREE

BEGINNING at a calculated point having Texas State Plane Grid Coordinate (Central Zone, NAD83/93(HARN), U.S. Feet, Combined Scale Factor 1.00007) values of N=10,078,284.32, E=3,131,508.12, on the northeast line of a water easement recorded in Document No. 2003089617, Official Public Records of Travis County, Texas, for the north corner of this tract, from said point, a 1/2" iron rod with plastic cap stamped "McGray" found on the curving west right-of-way line of Manor Road, bears N 20°41'10" W, 1564.86 feet, and from said point, a 1/2" rod found on the south right-of-way line of Manor Road, bears N 67°47'24" W, 1,732.01 feet;

THENCE, across said Morris Williams Golf Course, the following eleven (11) courses:

- 1) S 36°16'08" E, a distance of 172.99 feet to a calculated point;
- 2) S 50°32'45" E, a distance of 455.73 feet to a calculated point for the east corner of this tract;
- 3) S 13°57'58" W, a distance of 124.99 feet to a calculated point;
- 4) S 58°50'04" W, a distance of 32.42 feet to a calculated point for the south corner of this tract;
- 5) N 53°38'07" W, a distance of 34.26 feet to a calculated point;
- 6) N 36°21'53" E, a distance of 30.00 feet to a calculated point;
- 7) S 53°38'07" E, a distance of 14.18 feet to a calculated point;
- 8) N 13°57'58" E, a distance of 93.65 feet to a calculated point;
- 9) N 50°32'45" W, a distance of 440.56 feet to a calculated point;
- 10) N 36°16'08" W, a distance of 136.70 feet to a calculated point on the northeast line of said water line easement, for the west corner of this tract;
- 11) N 00°34'03" E, with the northeast line of said water easement, a distance of 50.04 feet to the **POINT OF BEGINNING** and containing 0.518 acre (22,583 square feet) of land.

PART FOUR

BEGINNING at a calculated point having Texas State Plane Grid Coordinate (Central Zone, NAD83/93(HARN), U.S. Feet, Combined Scale Factor 1.00007) values of N=10,078,351.01, E=3,131,421.98, on the southwest line of a water easement recorded in Document No. 2003089617, Official Public Records of Travis County, Texas, for the west corner of this tract, from said point, a 1/2" iron rod with plastic cap stamped "McGray" found on the curving west right-of-way line of Manor Road, bears N 18°28'03" W, 1473.13 feet, and from said point, a 1/2" rod found on the south right-of-way line of Manor Road bears N 68°49'04" W, 1,627.30 feet;

THENCE, across said Morris Williams Golf Course, with the southwest line of said water line easement, the following two (2) courses:

- 1) S 46°06'43" E, a distance of 98.70 feet to calculated point;
- 2) S 00°34'03" W, a distance of 28.14 feet to calculated point for the south corner of this tract;

THENCE, N 36°16'08" W, continuing across said Morris Williams Golf Course, a distance of 119.77 feet to the **POINT OF BEGINNING** and containing 0.023 acre (1,010 square feet) of land.

BEARING BASIS NOTE

The coordinates shown are based on the Texas State Plane Coordinate System (Central Zone, NAD83/93(HARN) Combined Scale Factor 1.00007). The bearings shown are grid bearings. Project control points were established from City of Austin reference point "L-24-3002 (RM07) having grid coordinate values of N=10,079,108.81, E=3,129,166.95.

THE STATE OF TEXAS §
COUNTY OF TRAVIS §


KNOW ALL MEN BY THESE PRESENTS:

That I, Carmelo L. Macias, a Registered Professional Land Surveyor, do hereby state that the above description is true and correct to the best of my knowledge and belief and that the property described herein was determined by a survey made on the ground under my direction and supervision.

WITNESS MY HAND AND SEAL at Austin, Travis County, Texas, this 6th day of October, 2008, A.D.



Macias & Associates, L. P.
5410 South 1st Street
Austin, Texas 78745
512-442-7875


Carmelo L. Macias
Registered Professional Land Surveyor
No. 4333 – State of Texas

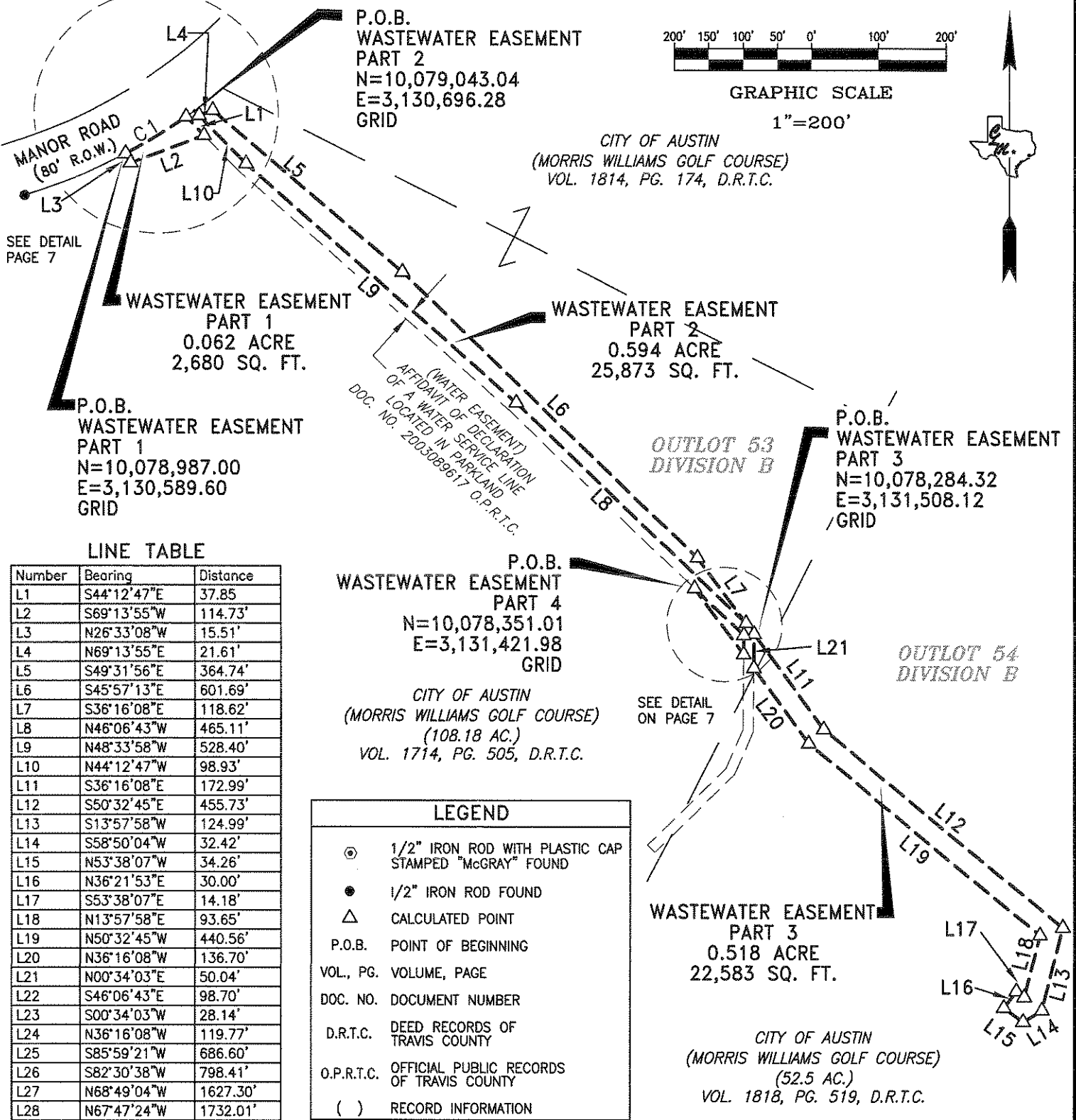
REFERENCES

MAPSCO 2003 586F
Austin Grid No. ML-24
MACIAS & ASSOCIATES, L.P., PROJECT NO. 320-05-08

FIELD NOTES REVIEWED

By JOHN MOORE Date 10-7-2008
Engineering Support Section
Department of Public Works
and Transportation

SKETCH TO ACCOMPANY LEGAL DESCRIPTION



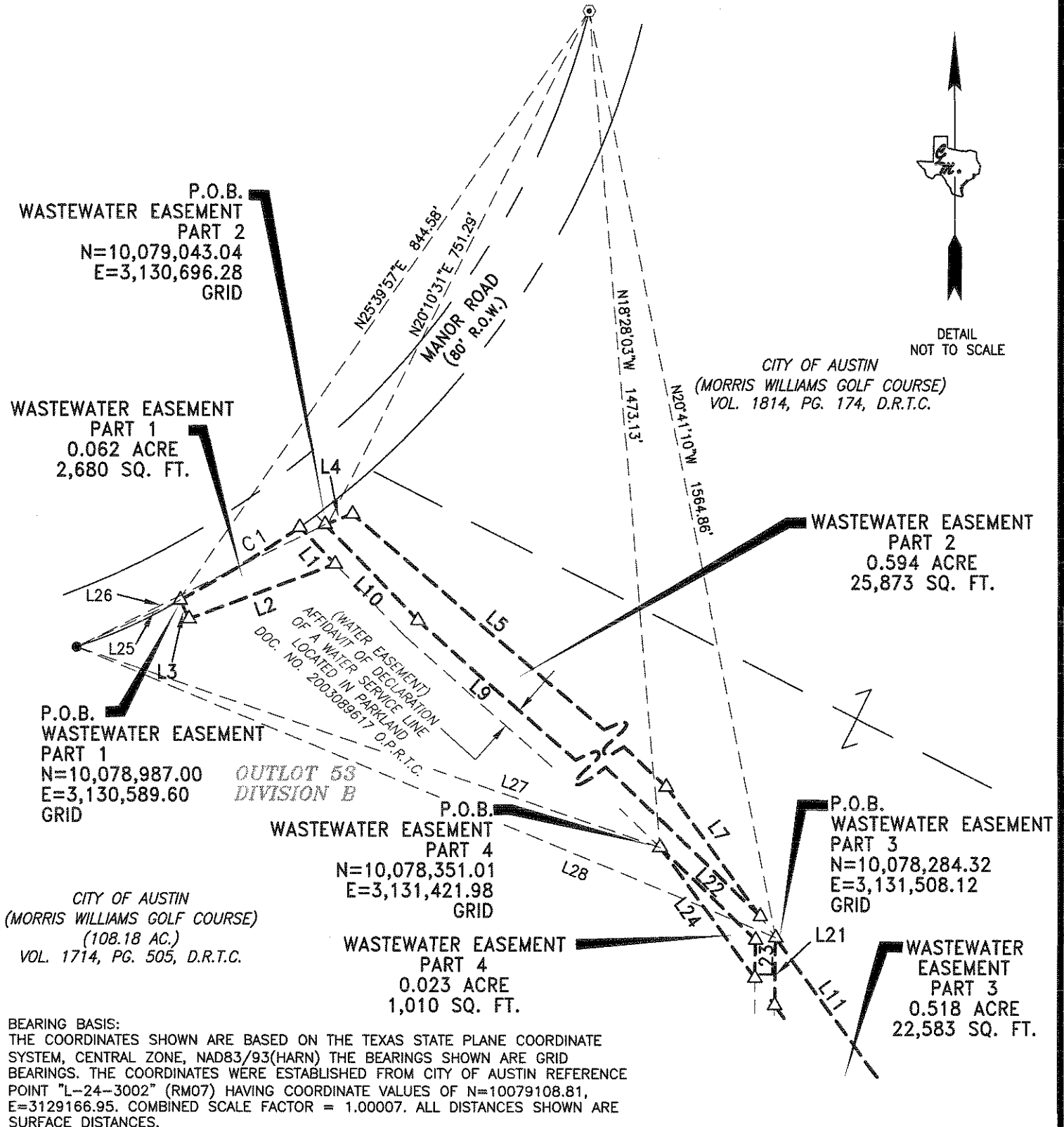
DATE: 10-6-08
DRAWN BY: ALM
MAI JOB NO.: 320-05-08
REFERENCE: F.B. 478 PG. 75
J:\JOBS\BROWN-AND-CALDWELL\320-05-08\DWG\32005-WE.dwg

MACIAS & ASSOCIATES, L.P.
LAND SURVEYORS

★ ★ ★ ★ ★ ★ ★ ★ ★ ★

5410 SOUTH 1ST STREET
AUSTIN, TEXAS 78745 PH. (512)442-7875
FAX (512)442-7876 EMAIL: MACIASURVEY@EARTHLINK.NET

SKETCH TO ACCOMPANY LEGAL DESCRIPTION



DETAIL
NOT TO SCALE



Carmelo L. Macias 10-6-08
Carmelo L. Macias
Registered Professional Land Surveyor
No. 4333 - State of Texas

Date:

DATE: 10-6-08
DRAWN BY: ALM
MAI JOB NO.: 320-05-08
REFERENCE: FB. 478 PG. 75

J:\JOBS\BROWN-AND-CALDWELL\320-05-08\DWG\32005-WE.dwg

MACIAS & ASSOCIATES, L.P.
LAND SURVEYORS

★ ★ ★ ★ ★ ★

5410 SOUTH 1ST STREET
AUSTIN, TEXAS 78745 PH. (512)442-7875
FAX (512)442-7876 EMAIL: MACIASURVEY@EARTHLINK.NET



MACIAS & ASSOCIATES, L.P.
LAND SURVEYORS

EXHIBIT “ ”

CITY OF AUSTIN
(Temporary Working Space Easement &
Material Storage Site & Staging Area)
October 8, 2008

LEGAL DESCRIPTION

DESCRIPTION OF A 2.902 ACRE (126,435 SQUARE FOOT) TRACT OF LAND OUT OF OUTLOTS 53 & 54 , DIVISION B OF THE GOVERNMENT OUTLOTS ADJOINING THE CITY OF AUSTIN ON FILE IN THE GENERAL LAND OFFICE OF THE STATE OF TEXAS; SAID 2.902 ACRE TRACT ALSO BEING OUT OF A 108.18 ACRE TRACT OF LAND (MORRIS WILLIAMS GOLF COURSE) DESCRIBED IN A WARRANTY DEED DATED JULY 31, 1956 TO THE CITY OF AUSTIN, RECORDED IN VOLUME 1714, PAGE 505, DEED RECORDS OF TRAVIS COUNTY, TEXAS, ALSO BEING OUT OF A TRACT OF LAND (MORRIS WILLIAMS GOLF COURSE) DESCRIBED IN A WARRANTY DEED DATED APRIL 18, 1957 TO THE CITY OF AUSTIN, RECORDED IN VOLUME 1814, PAGE 174, DEED RECORDS OF TRAVIS COUNTY TEXAS, AND ALSO BEING OUT OF A 52.5 ACRE TRACT OF LAND (MORRIS WILLIAMS GOLF COURSE) DESCRIBED IN A WARRANTY DEED DATED APRIL 30, 1957 TO THE CITY OF AUSTIN, RECORDED IN VOLUME 1818, PAGE 519, DEED RECORDS OF TRAVIS COUNTY, TEXAS; SAID 2.902 ACRES (126,435 SQUARE FOOT) TRACT BEING DESCRIBED AS PART ONE CONTAINING 2.023 ACRES (88,125 SQUARE FEET), AND PART TWO CONTAINING 0.879 ACRE (38,310 SQUARE FEET), AS SHOWN ON THE ACCOMPANYING SKETCH, BEING MORE PARTICULARLY DESCRIBED BY METES AND BOUNDS AS FOLLOWS:

PART ONE

BEGINNING at a calculated point having Texas State Plane Grid Coordinate (Central Zone, NAD83/93(HARN)), U.S. Feet, Combined Scale Factor 1.00007) values of N=10,079,112.84, E=3,130,766.31, on the curving east right-of-way line of Manor Road, an 80-foot wide right-of-way, and on the west line of said Morris Williams Golf Course, for the north corner of this tract, from said point, a 1/2" iron rod with plastic cap stamped "McGray" found on the curving west right-of-way line of Manor Road, bears N 16°34'17" E, 662.93 feet and from said point, a 1/2" rod found on the south right-of-way line of Manor Road bears S 78°35'28" W, 879.01 feet ;

THENCE, across said Morris Williams Golf Course, the following forty-nine (49) courses:

- 1) S 48°09'15" E, a distance of 52.12 feet to a calculated point;
- 2) S 45°54'24" W, a distance of 49.55 feet to a calculated point;

32005 MSSSA 2.902 Ac.

- 3) S 45°55'12" E, a distance of 926.00 feet to a calculated point;
- 4) S 36°23'38" E, a distance of 287.80 feet to a calculated point;
- 5) N 50°36'54" E, a distance of 13.39 feet to a calculated point;
- 6) S 49°36'23" E, a distance of 33.69 feet to a calculated point;
- 7) S 27°33'57" W, a distance of 18.87 feet to a calculated point;
- 8) S 50°49'34" E, a distance of 102.21 feet to a calculated point;
- 9) N 47°15'20" E, a distance of 7.26 feet to a calculated point;
- 10) N 08°17'34" E, a distance of 4.85 feet to a calculated point;
- 11) N 03°45'52" E, a distance of 13.80 feet to a calculated point;
- 12) N 88°21'31" E, a distance of 25.97 feet to a calculated point;
- 13) S 66°35'46" E, a distance of 44.78 feet to a calculated point;
- 14) S 51°07'22" E, a distance of 156.92 feet to a calculated point;
- 15) S 32°56'43" E, a distance of 44.45 feet to a calculated point;
- 16) S 65°23'13" W, a distance of 8.57 feet to a calculated point;
- 17) S 39°49'17" W, a distance of 33.19 feet to a calculated point;
- 18) S 49°25'46" E, a distance of 89.45 feet to a calculated point;
- 19) S 12°58'41" W, a distance of 131.71 feet to a calculated point;
- 20) S 59°12'45" W, a distance of 42.95 feet to a calculated point;
- 21) N 56°19'29" W, a distance of 36.00 feet to a calculated point;
- 22) N 48°44'50" W, a distance of 70.95 feet to a calculated point;
- 23) N 41°15'57" W, a distance of 68.06 feet to a calculated point;

- 24) N 68°19'44" W, a distance of 32.68 feet to a calculated point;
- 25) N 64°58'21" W, a distance of 54.82 feet to a calculated point;
- 26) N 51°40'12" W, a distance of 30.92 feet to a calculated point;
- 27) N 49°46'46" W, a distance of 36.90 feet to a calculated point;
- 28) N 24°27'22" W, a distance of 61.16 feet to a calculated point;
- 29) N 14°25'14" W, a distance of 95.01 feet to a calculated point;
- 30) N 16°07'38" W, a distance of 82.54 feet to a calculated point;
- 31) N 24°17'32" W, a distance of 38.27 feet to a calculated point;
- 32) N 33°07'21" W, a distance of 38.05 feet to a calculated point;
- 33) S 36°16'08" E, a distance of 89.46 feet to a calculated point;
- 34) S 50°32'45" E, a distance of 440.56 feet to a calculated point;
- 35) S 13°57'58" W, a distance of 93.65 feet to a calculated point;
- 36) N 53°38'07" W, a distance of 14.18 feet to a calculated point;
- 37) S 36°21'53" W, a distance of 30.00 feet to a calculated point;
- 38) S 53°38'07" E, a distance of 34.26 feet to a calculated point;
- 39) N 58°50'04" E, a distance of 32.42 feet to a calculated point;
- 40) N 13°57'58" E, a distance of 124.99 feet to a calculated point;
- 41) N 50°32'45" W, a distance of 455.73 feet to a calculated point;
- 42) N 36°16'08" W, a distance of 172.99 feet to a calculated point on the northeast line of a water easement recorded in Document No. 2003089617, Official Public Records of Travis County, Texas;
- 43) N 00°34'03" E, with the northeast line of said water line easement, a distance of 4.59 feet to a calculated point;

- 44) N 46°06'43" W, continuing with the northeast line of said water line easement a distance of 16.10 feet to a calculated point;
- 45) N 36°16'08" W, a distance of 118.62 feet to calculated point;
- 46) N 45°57'13" W, a distance of 601.69 feet to calculated point;
- 47) N 49°31'56" W, a distance of 364.74 feet to calculated point;
- 48) S 69°13'55" W, a distance of 21.61 feet to calculated point on the northeast line of said water easement;
- 49) N 44°09'45" W, with the northeast line of said water easement, a distance of 9.44 feet to calculated point on the curving east right-of-way line of Manor Road and on the west line of said Morris Williams Golf Course, for the west corner of this tract;

THENCE, with the curving east right-of-way line of Manor Road and the west line of Morris Williams Golf Course, along a curve to the left having a radius of 842.43 feet, a central angle of 06°45'06", a chord which bears N 50°31'20" E, 99.21 feet, an arc distance of 99.27 feet to the **POINT OF BEGINNING** and containing 2.023 acre (88,125 square feet) of land.

PART TWO

BEGINNING at a calculated point having Texas State Plane Grid Coordinate (Central Zone, NAD83/93(HARN), U.S. Feet, Combined Scale Factor 1.00007) values of N=10,078,987.00 E=3,130,589.60, on the curving east right-of-way line of Manor Road, an 80-foot wide right-of-way, and on the west line of said Morris Williams Golf Course, for the north corner of this tract, from said point, a 1/2" iron rod with plastic cap stamped "McGray" found on the curving west right-of-way line of Manor Road, bears N 25°39'57" E, 844.58 feet, and from said point, a 1/2" rod found on the south right-of-way line of Manor Road, bears S 85°59'21" W, 686.60 feet ;

THENCE, across said Morris Williams Golf Course, the following nineteen (19) courses:

- 1) S 26°33'08" E, a distance of 15.51 feet to a calculated point;
- 2) N 69°13'55" E, a distance of 114.73 feet to a calculated point on the southwest line of a water easement recorded in Document No. 2003089617, Official Public Records of Travis County, Texas, for an angle point;
- 3) S 44°12'47" E, with the southwest line of said water easement, a distance of 73.18 feet to a calculated point;

- 4) S 48°33'57"E, continuing with the southwest line of said water easement, a distance of 528.77 feet to a calculated point;
- 5) S 46°06'43" E, continuing with the southwest line of said water easement, a distance of 375.72 feet to calculated point;
- 6) S 36°16'08" E, a distance of 99.04 feet to a calculated point;
- 7) N 47°22'38" W, a distance of 47.73 feet to a calculated point;
- 8) N 47°22'10" W, a distance of 259.17 feet to a calculated point;
- 9) N 47°23'51" W, a distance of 276.49 feet to a calculated point;
- 10) N 50°31'16" W, a distance of 85.80 feet to a calculated point;
- 11) N 56°26'29" W, a distance of 59.60 feet to a calculated point;
- 12) N 68°36'48" W, a distance of 105.47 feet to a calculated point;
- 13) N 53°57'17" W, a distance of 24.16 feet to a calculated point;
- 14) N 34°31'11" W, a distance of 80.49 feet to a calculated point;
- 15) N 34°11'39" W, a distance of 142.54 feet to a calculated point;
- 16) S 56°08'42" W, a distance of 34.49 feet to a calculated point;
- 17) S 60°07'17" W, a distance of 69.95 feet to a calculated point;
- 18) S 64°13'47" W, a distance of 14.09 feet to a calculated point;
- 19) N 25°14'02" W, a distance of 50.58 feet to a calculated point on the curving east right-of-way line of Manor Road, and on the west line of said Morris Williams Golf Course;

THENCE, with the curving east right-of-way line of Manor Road and the west line of said Morris Williams Golf Course, along a curve to the left having a radius of 842.43 feet, a central angle of 01°37'13", a chord which bears N 62°45'10" E, 23.82 feet, an arc distance of 23.83 feet to the **POINT OF BEGINNING** and containing 0.879 acre (38,310 square feet) of land.

BEARING BASIS NOTE

The coordinates shown are based on the Texas State Plane Coordinate System, (Central Zone, NAD83/93(HARN) Combined Scale Factor 1.00007). The bearings shown are grid bearings. Project control points were established from City of Austin reference point "L-24-3002 (RM07) having grid coordinate values of N=10,079,108.81, E=3,129,166.95.

THE STATE OF TEXAS §
§
COUNTY OF TRAVIS §

KNOW ALL MEN BY THESE PRESENTS:

That I, Carmelo L. Macias, a Registered Professional Land Surveyor, do hereby state that the above description is true and correct to the best of my knowledge and belief and that the property described herein was determined by a survey made on the ground under my direction and supervision.

WITNESS MY HAND AND SEAL at Austin, Travis County, Texas, this 8th day of October, 2008, A.D.



Macias & Associates, L. P.
5410 South 1st Street
Austin, Texas 78745
512-442-7875
512-442-7876

Carmelo L. Macias
Carmelo L. Macias.
Registered Professional Land Surveyor
No. 4333— State of Texas

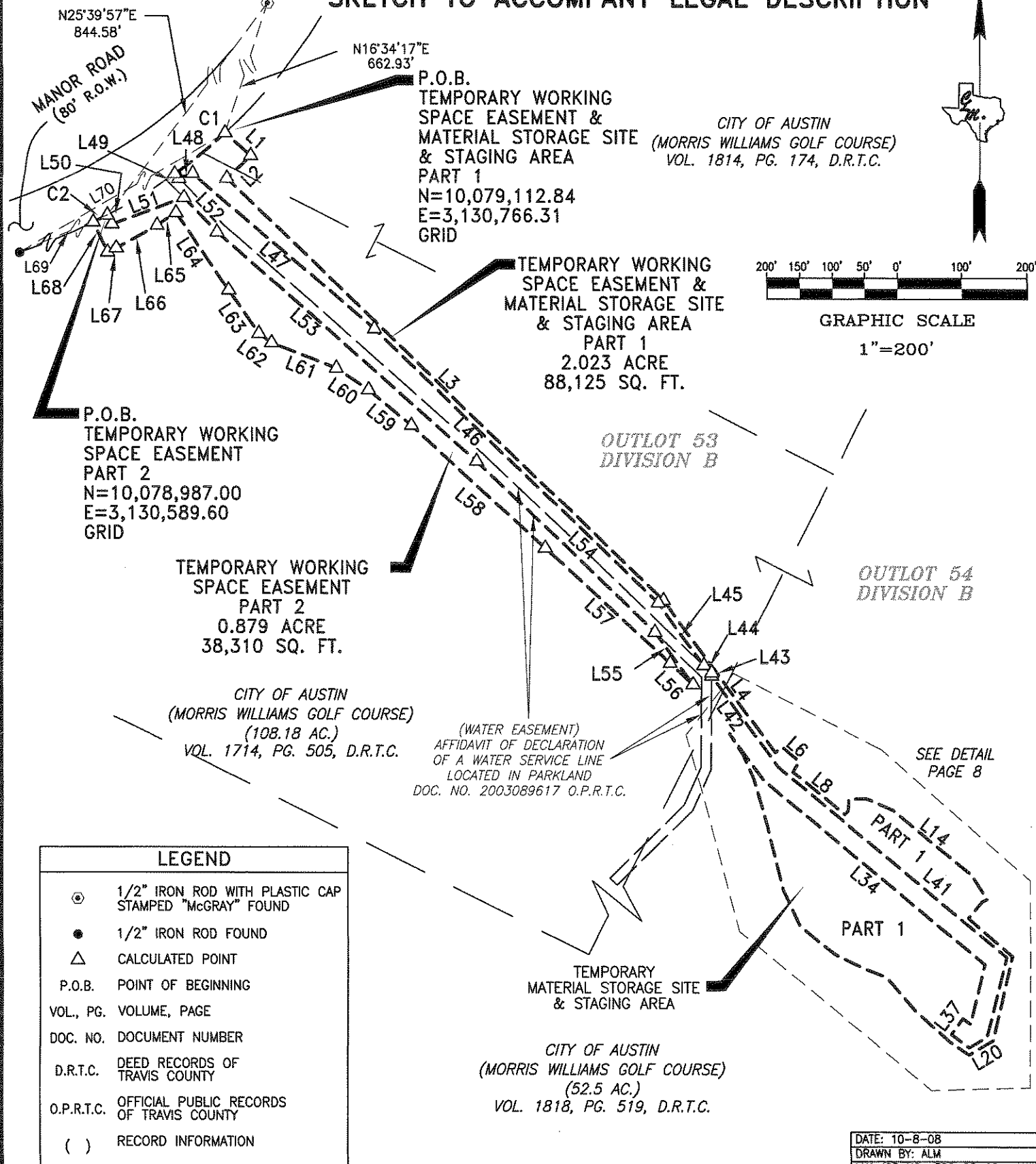
REFERENCES

MAPSCO 2003 586F
Austin Grid No. ML-24
MACIAS & ASSOCIATES, L.P., PROJECT NO. 320-05-08

FIELD NOTES REVIEWED

By *John H. Moore* Date *10-10-2008*
Engineering Support Section
Department of Public Works
and Transportation

SKETCH TO ACCOMPANY LEGAL DESCRIPTION



BEARING BASIS:
THE COORDINATES SHOWN ARE BASED ON THE TEXAS STATE PLANE COORDINATE SYSTEM, CENTRAL ZONE, NAD83/93(HARN) THE BEARINGS SHOWN ARE GRID BEARINGS. THE COORDINATES WERE ESTABLISHED FROM CITY OF AUSTIN REFERENCE POINT "L-24-3002" (RM07) HAVING COORDINATE VALUES OF N=10079108.81, E=3129166.95. COMBINED SCALE FACTOR = 1.00007. ALL DISTANCES SHOWN ARE SURFACE DISTANCES.

PAGE 7 OF 8

DATE: 10-8-08
DRAWN BY: ALM
MAI JOB NO.: 320-05-08
REFERENCE: FB. 478 PG. 75

J:\JOBS\BROWN-AND-CALDWELL\320-05-08\DWG\32005-TWSE.dwg

MACIAS & ASSOCIATES, L.P.
LAND SURVEYORS



5410 SOUTH 1ST STREET
AUSTIN, TEXAS 78745 PH. (512)442-7875
FAX (512)442-7876 EMAIL: MACIASURVEY@EARTHLINK.NET

SKETCH TO ACCOMPANY LEGAL DESCRIPTION

LINE TABLE

Number	Bearing	Distance
L1	S48°09'15"E	52.12'
L2	S45°54'24"W	49.55'
L3	S45°55'12"E	926.00'
L4	S36°23'38"E	287.80'
L5	N50°36'54"E	13.39'
L6	S49°36'23"E	33.69'
L7	S27°33'57"W	18.87'
L8	S50°49'34"E	102.21'
L9	N47°15'20"E	7.26'
L10	N08°17'34"E	4.85'
L11	N03°45'52"E	13.80'
L12	N88°21'31"E	25.97'
L13	S66°35'46"E	44.78'
L14	S51°07'22"E	156.92'
L15	S32°56'43"E	44.45'
L16	S65°23'13"W	8.57'
L17	S39°49'17"W	33.19'
L18	S49°25'46"E	89.45'
L19	S12°58'41"W	131.71'
L20	S59°12'45"W	42.95'
L21	N56°19'29"W	36.00'
L22	N48°44'50"W	70.95'
L23	N41°15'57"W	68.06'
L24	N68°19'44"W	32.68'
L25	N64°58'21"W	54.82'
L26	N51°40'12"W	30.92'
L27	N49°46'46"W	36.90'
L28	N24°27'22"W	61.16'
L29	N14°25'14"W	95.01'
L30	N16°07'38"W	82.54'
L31	N24°17'32"W	38.27'
L32	N33°07'21"W	38.05'
L33	S36°16'08"E	89.46'
L34	S50°32'45"E	440.56'
L35	S13°57'58"W	93.65'
L36	N53°38'07"W	14.18'
L37	S36°21'53"W	30.00'
L38	S53°38'07"E	34.26'
L39	N58°50'04"E	32.42'
L40	N13°57'58"E	124.99'
L41	N50°32'45"W	455.73'
L42	N36°16'08"W	172.99'
L43	N00°34'03"E	4.59'
L44	N46°06'43"W	16.10'
L45	N36°16'08"W	118.62'
L46	N45°57'13"W	601.69'

CITY OF AUSTIN
(MORRIS WILLIAMS
GOLF COURSE)
(108.18 AC.)
VOL. 1714, PG. 505,
D.R.T.C.

DETAIL
NOT TO SCALE

(WATER)
(EASEMENT)
DOC. NO. 2003089617
O.P.R.T.C.

LINE TABLE

Number	Bearing	Distance
L47	N49°31'56"W	364.74'
L48	S69°13'55"W	21.61'
L49	S44°12'47"E	9.44'
L50	S26°33'08"E	15.51'
L51	N69°13'55"E	114.73'
L52	S44°12'47"E	73.18'
L53	S48°33'57"E	528.77'
L54	S46°06'43"E	375.72'
L55	S36°16'08"E	99.04'
L56	N47°22'38"W	47.73'
L57	N47°22'10"W	259.17'
L58	N47°23'51"W	276.49'
L59	N50°31'16"W	85.80'
L60	N56°26'29"W	59.60'
L61	N68°36'48"W	105.47'
L62	N53°57'17"W	24.16'
L63	N34°31'11"W	80.49'
L64	N34°11'39"W	142.54'
L65	S56°08'42"W	34.49'
L66	S60°07'17"W	69.95'
L67	S64°13'47"W	14.09'
L68	N25°14'02"W	50.58'
L69	S85°59'21"W	686.60'
L70	S78°35'28"W	879.01'

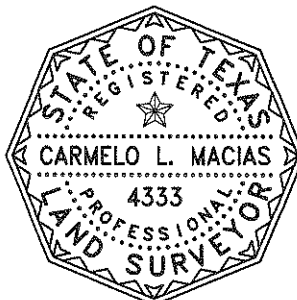
CITY OF AUSTIN
(MORRIS WILLIAMS GOLF COURSE)
(52.5 AC.)
VOL. 1818, PG. 519, D.R.T.C.

TEMPORARY WORKING
SPACE EASEMENT &
MATERIAL STORAGE SITE
PART 1
2.023 ACRE
88,125 SQ. FT.

OUTLOT 54
DIVISION B

CURVE TABLE

NUMBER	Delta Angle	Radius	Arc Length	Chord Length	Chord Bearing
C1	06°45'06"	842.43'	99.27'	99.21'	N50°31'20"E
C2	01°37'13"	842.43'	23.83'	23.82'	N62°45'10"E

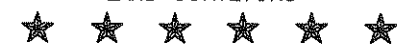


PAGE 8 OF 8

DATE: 10-8-08
DRAWN BY: ALM
MAI JOB NO.: 320-05-08
REFERENCE: FB. 478 PG. 75

J:\JOBS\BROWN-AND-CALDWELL\320-05-08\DWG\32005-TWSE.dwg

MACIAS & ASSOCIATES, L.P.
LAND SURVEYORS



5410 SOUTH 1ST STREET
AUSTIN, TEXAS 78745 PH. (512)442-7875
FAX (512)442-7876 EMAIL: MACIASURVEY@EARTHINK.NET

Carmelo L. Macias Oct 8, 2008

Carmelo L. Macias
Registered Professional Land Surveyor
No. 4333 - State of Texas

Date: