



## Austin Tomorrow Comprehensive Plan

Austin City Council  
June 18, 2008

### What Is This Project ?

- Limited update of the Austin Tomorrow Comprehensive Plan
- Examine Austin's long-range planning needs beyond the interim update.



Late Backlog

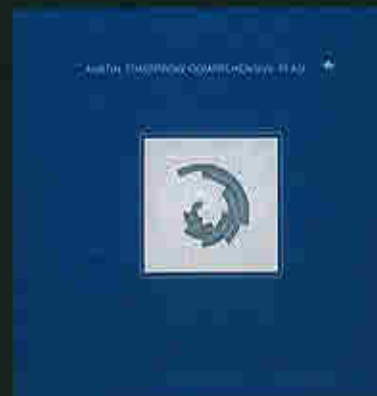
## What Is A Comprehensive Plan?

- Long-term vision for an entire community within the context of the region
- Addresses all growth and development policies at once
- Examines interrelationships and tradeoffs
- Forum to engage entire community
- Both a planning and accounting/measuring tool
- General rather than specific/ stays at 30,000 foot level



## What Documents Presently Serve As Austin's Comprehensive Plan Of Record?

- Austin Tomorrow is The City of Austin's Comprehensive Plan of Record
- Was developed during the 70's and adopted in 1979
- Subsequently amended by the adoption of neighborhood plans
- Contains four chapters and supporting maps
- "Policy Framework" plan typical of its time



## **What Do We Mean By A Limited "Interim" Update?**

- Remove obsolete policy language and replace it with subsequently adopted policies
- Replace or supplement dated maps with current maps.
- What are Austin's growth and development policies today?

## **Chapter 2: Goals, Objectives, and Policies**

### **Urban Design**

(pages 12-28)

Land Development Code, Environmental Criteria Manual, National Historic Preservation Act, Design Standards & Mixed Use Ordinance, Complete Streets Resolution, Bicycle Plan, and Pedestrian Master Plan

### **Economic Development**

(Pages 29-38)

Council Resolution 20050113-52, Austin Economic Development Policy, Austin Climate Protection Plan, Zero Waste Policy

## **Chapter 2: Goals, Objectives, and Policies**

### **Environmental Management**

(Pages 39-68)

Austin climate Protection Plan, Environmental Criteria Manual, Airport Zoning Act, Smart Growth Initiative, Drinking Water Protection Zone, Land Development Code, Zero Waste Plan

### **Government and Utility Services**

(pages 69-81)

Austin Climate Protection Plan, Smart Growth Initiative, Council Resolution 20080214-055, Zero Waste Plan, Land Development Code

## **Chapter 2: Goals, Objectives, and Policies**

### **Housing, Neighborhoods, and Community Development**

(Pages 82-93)

Consolidated Plan and Action Plan, S.M.A.R.T. Housing Resource Guide, Vertical Mixed Use, Transit Oriented Development, Affordable Housing Taskforce

### **Parks, Open Space, and Recreational Facilities**

(Pages 94-106)

Americans with Disabilities Act, Bicycle Plan, Parkland Dedication Ordinance



## **Chapter 2: Goals, Objectives, and Policies**

### **Transportation Systems**

(pages 107-124)

Great Streets, Transit Oriented Development, Neighborhood Planning, Bicycle Plan, Clean Air Compact, Climate Protection Plan, Hill Country Roadway Ordinance, Airport Overlay

### **Health and Human Services**

(Pages 125-136)

Creation of Health and Human Services Department: mission, goals, funding, and delivery systems.

## **Chapter 3 & 4 Addendums**

- Chapter 3 addresses critical issues facing Austin

- Environmental protection
- Downtown
- Neighborhoods
- Compact City/Density

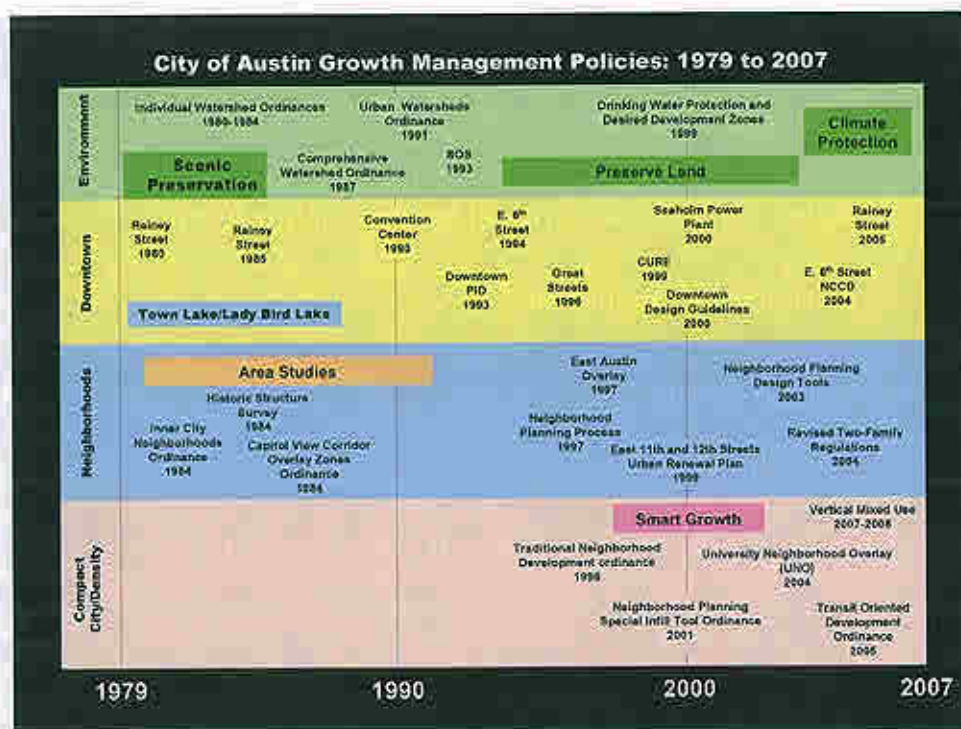
- Chapter 4 proposes policies to address the issues identified in Chapter 3

## Chapter 4: Addendum

### •Overview of ATCP Chapter Four

### •What from the ATCP was implemented? Overview of COA Development Policies—1979 to 2007

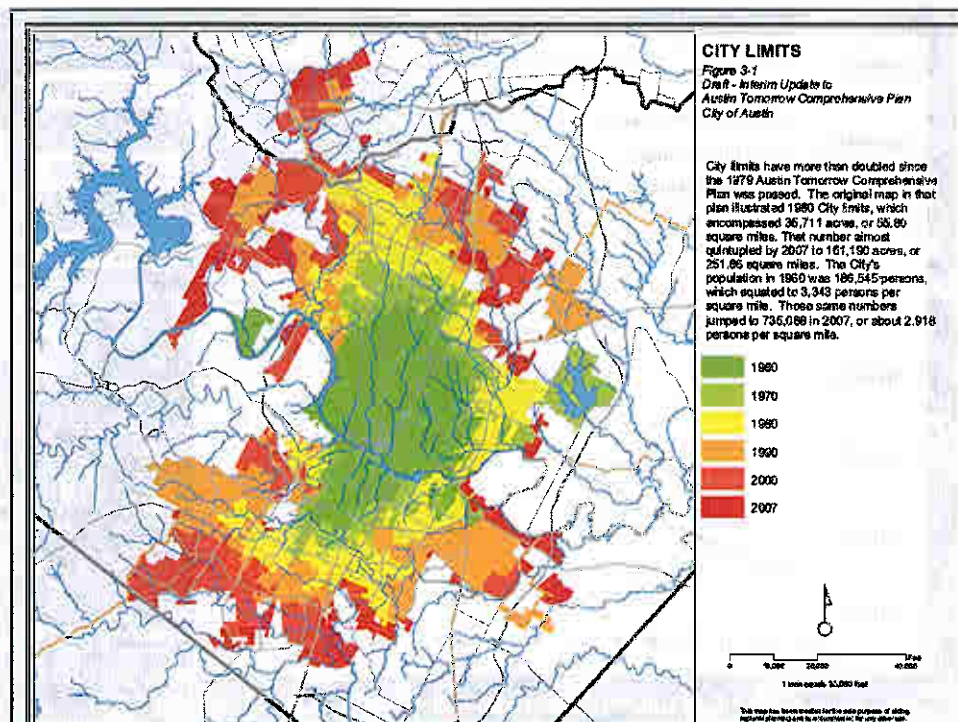
### •Develop New Growth Concept Map Based on Adopted Policies and Initiatives



**Austin's Land Area (Square Miles): 1960 to 2007**

Year	Land Area	10 Year Land Area Change Percentage	10 Year Land Area Change In Square Miles
1960	55.8	8%*	4.7*
1970	81.4	46%	25.6
1980	128.9	58%	47.5
1990	226.3	76%	97.4
2000	265.1	17%	38.8
2007	297.6	12%	32.5

\*1951 to 1960

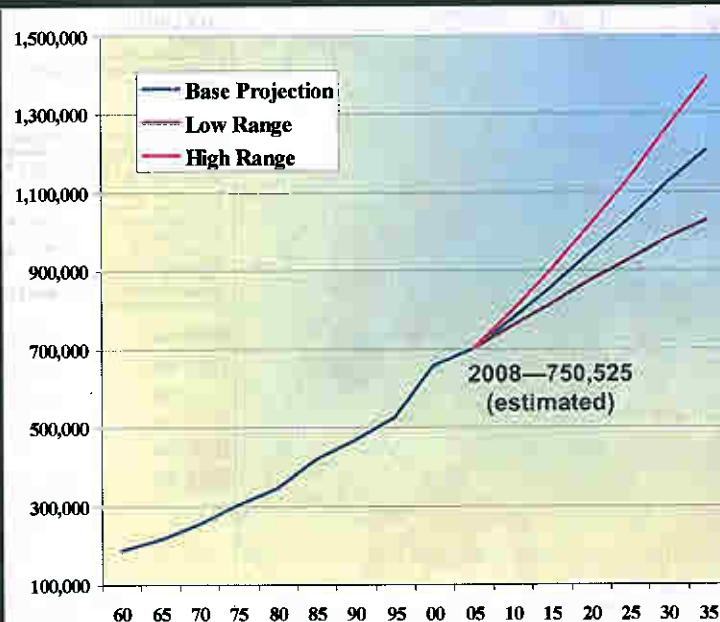


**Austin Population Growth: 1960-2007**

Year	Population	10 Year Percent Change	10 Year Numerical Change	20 Year Percent Change	20 Year Numerical Change
1960	186,545	40% <sup>*</sup>	54,088 <sup>*</sup>	112% <sup>**</sup>	98,615 <sup>**</sup>
1970	251,808	35%	65,263	90% <sup>***</sup>	119,349 <sup>***</sup>
1980	345,890	37%	94,082	85%	159,345
1990	465,622	35%	119,732	85%	213,814
2000	656,562	41%	190,940	90%	310,672
2007	735,088	12% <sup>****</sup>	78,526 <sup>****</sup>	58% <sup>*****</sup>	269,466 <sup>*****</sup>

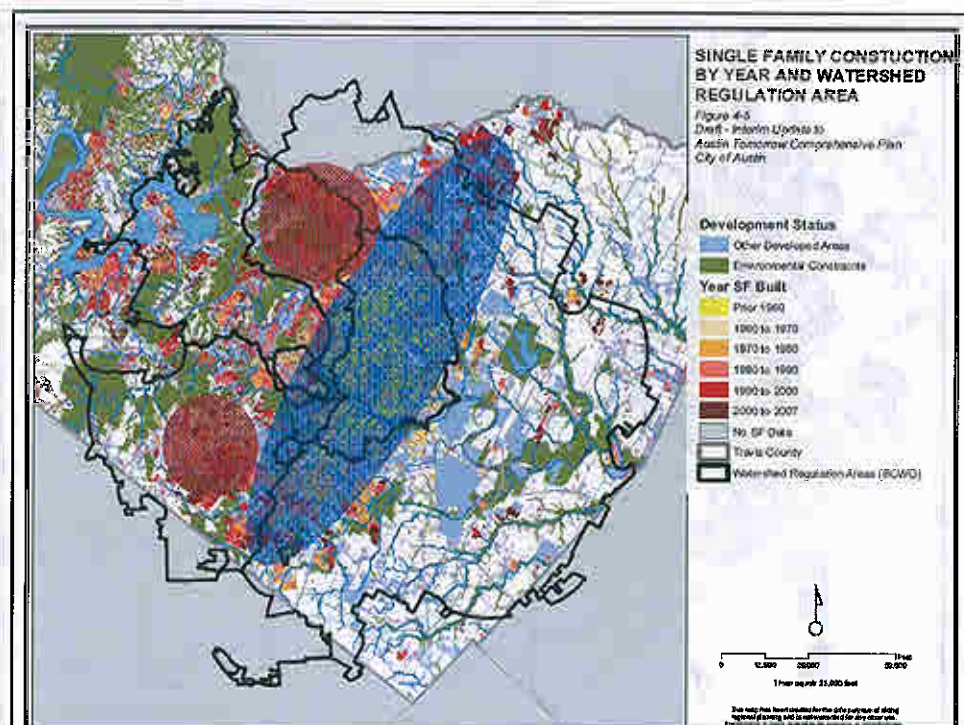
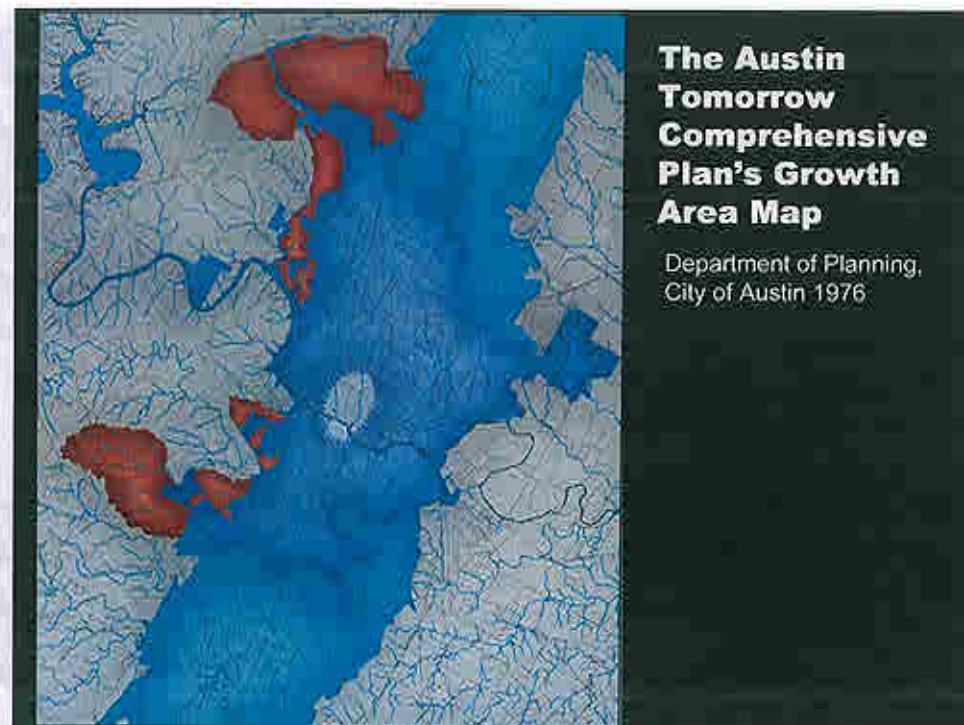
\*195

0 to 1960    \*\*1940 to 1960    \*\*\*1950 to 1970    \*\*\*\*2000 to 2007    \*\*\*\*\*1990 to 2007

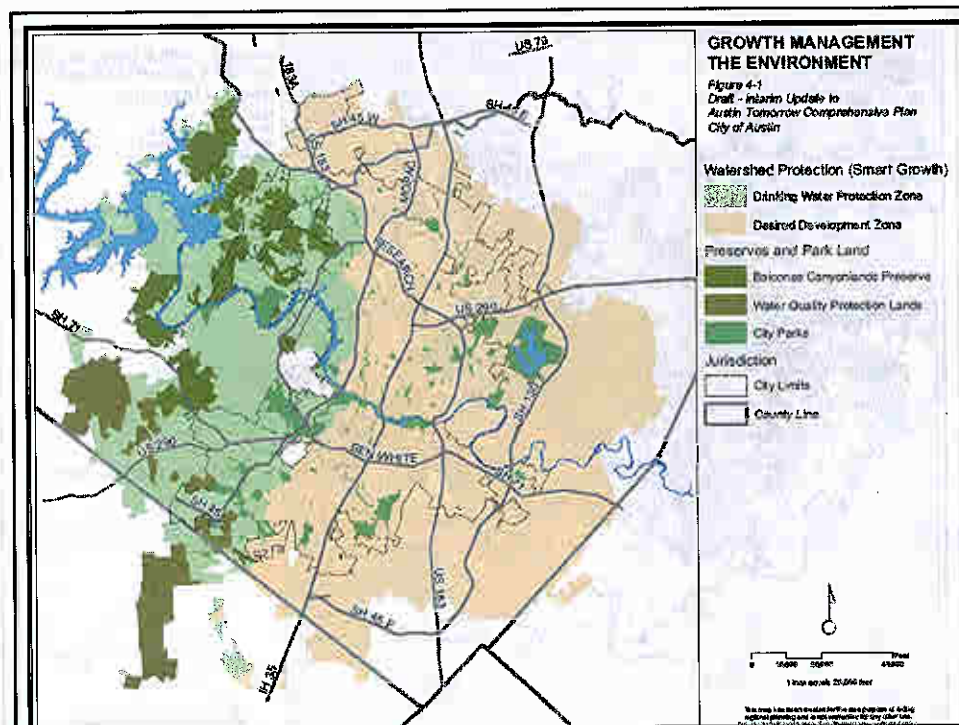


City of Austin Population Forecast: 2007-2035

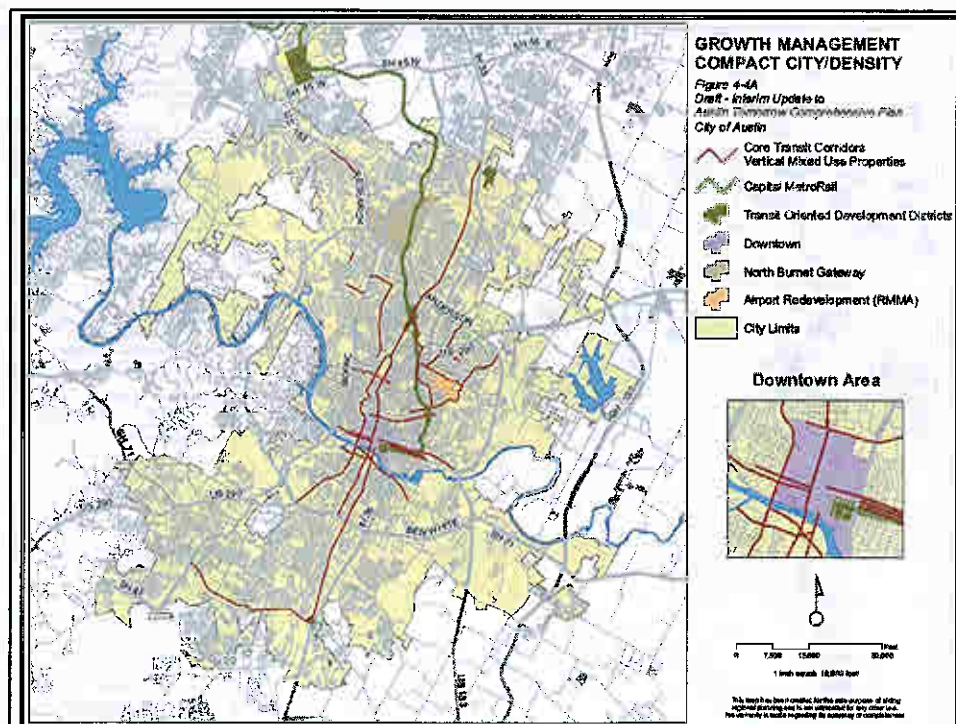
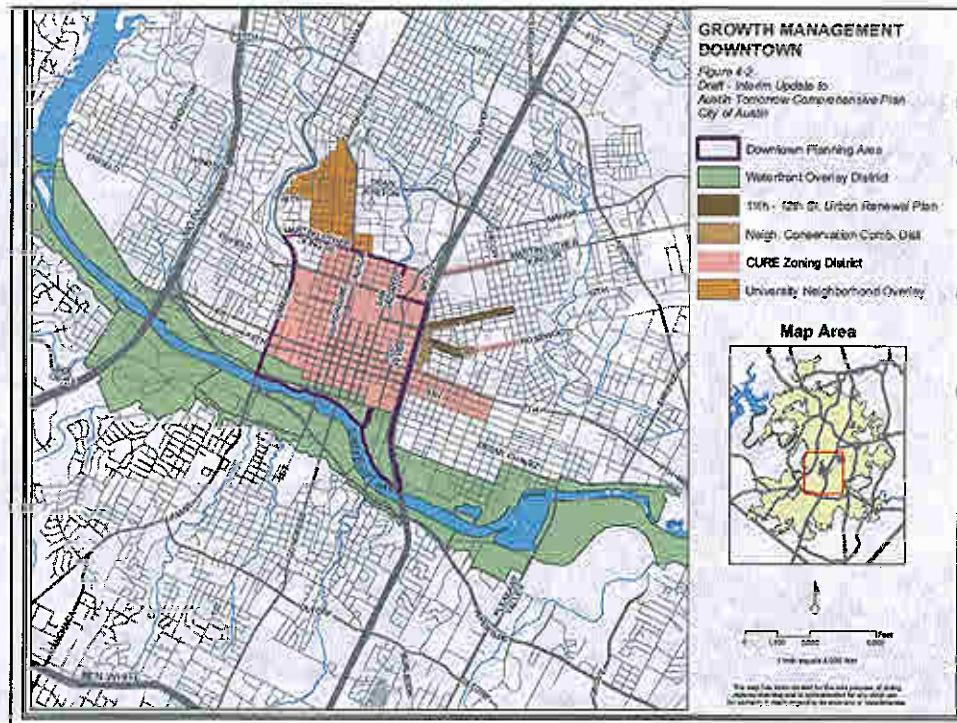




# Developing A New Growth Concept Map







# New Growth Concept Map

