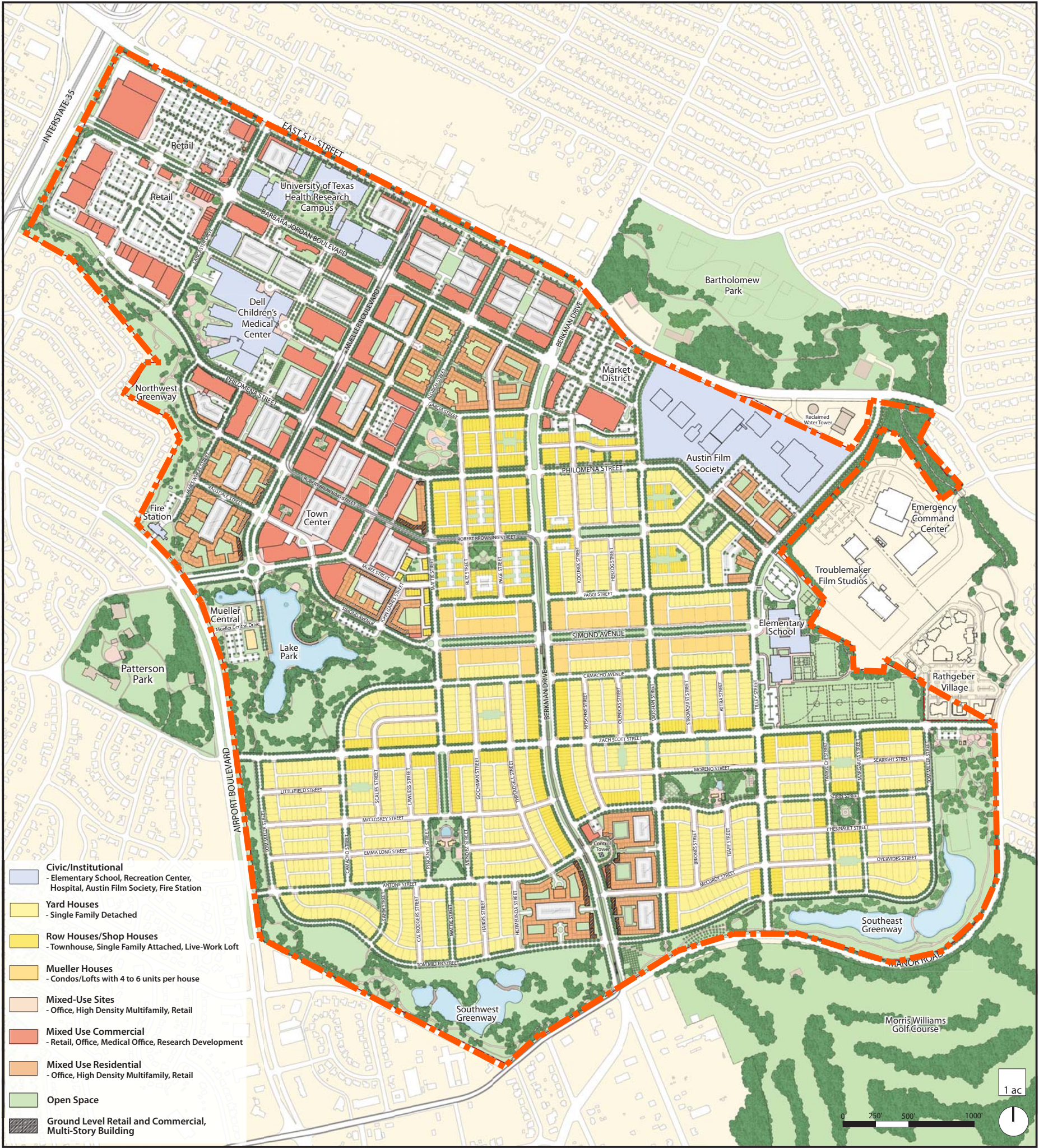


# Exhibit 4

## TIRZ Boundaries



The information contained in this site plan is subject to change without notice. Each of Catellus Development Group, Catellus Development Corporation, Prologis, their affiliates and representatives makes, and expressly disclaims any representations or warranties as to the accuracy of the site plan or that the site plan will not change. Each party receiving this site plan acknowledges it is relying on its own investigations in connection with the Mueller property and not on any statements in the site plan or on the site plan not changing.



### ILLUSTRATIVE PLAN

Prepared for Catellus Development Group by ROMA Austin

March 9, 2009