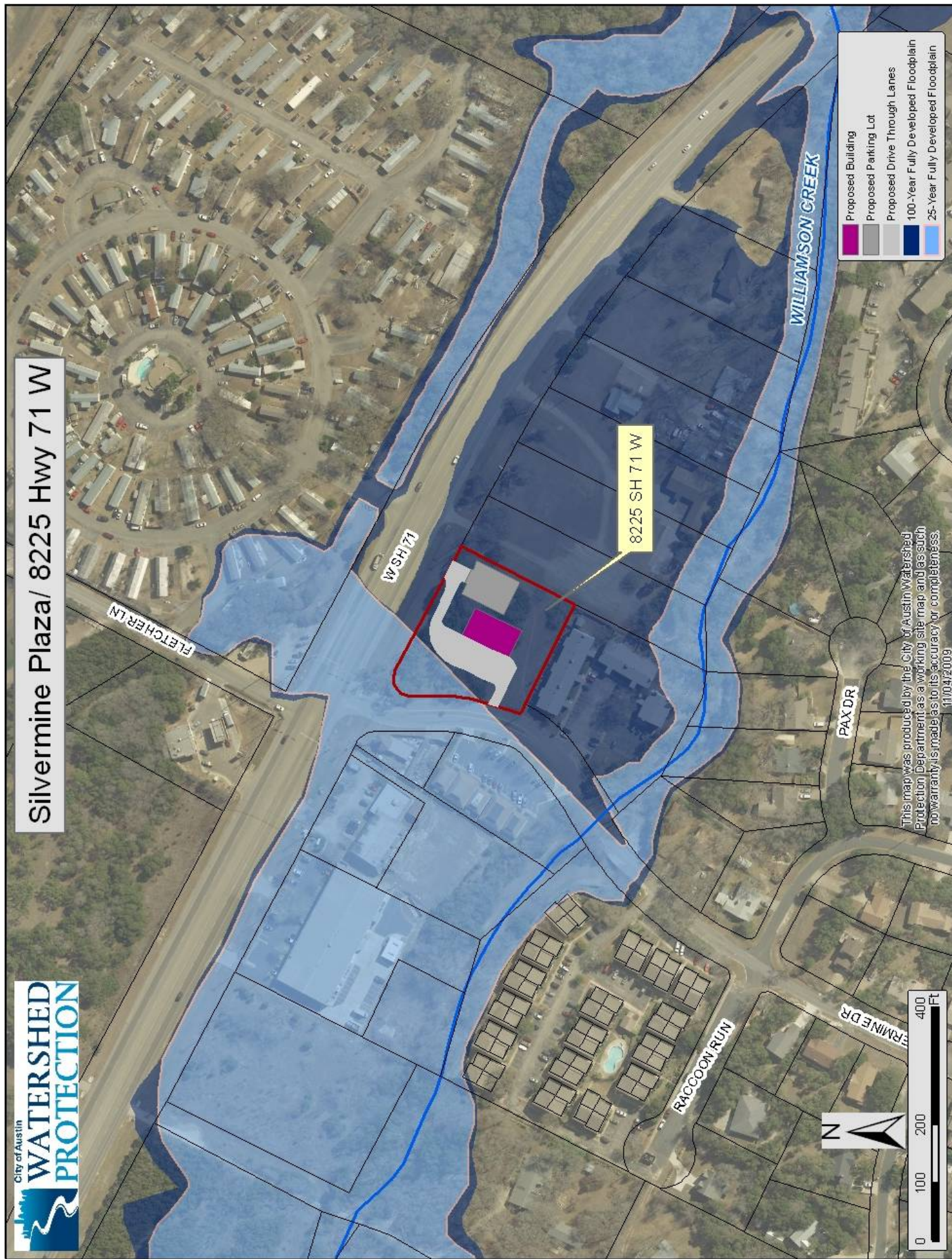


Backup Information Packet

Concerning a public hearing to consider an ordinance regarding floodplain variances requested by Highland Ventures I, Ltd. and McDonald Signet Limited for a proposed commercial bank building with surface parking at 8225 Highway 71 West, which is in the 100-year floodplain of Williamson Creek.

1. Site Location Map with Floodplains for 8225 Hwy 71 West
2. 8225 Hwy 71 West Floodplain Map

Silvermine Plaza/ 8225 Hwy 71 W



Silvermine Plaza/ 8225 Hwy 71 W

WSH 71

SILVERMINE DR

8225 SH 71 W

- Proposed Building
- Proposed Parking Lot
- Proposed Drive Through Lanes
- 100-Year Fully Developed Floodplain
- 25-Year Fully Developed Floodplain

This map was produced by the City of Austin Watershed Protection Department as a working site map and as such no warranty is made as to its accuracy or completeness.
 11/04/2009

