

Inspiration

The Art Deco limestone pylons at the entrance to Zilker Park are the inspiration. These provide a pedestrian scale with flowers planted at the base and bench height platforms and steps of varying heights. The field tile for the chair will be a mottled gray porcelain tile that mimics aged limestone. 2"x 2", 3"x 3", and 6"x 6" tiles will be used in a striped pattern that will tie the different portions together. A brightly colored geometric flower mosaic referencing the natural setting surrounding McBeth Center and a complimenting flower poem will complete the look.

Involving McBeth clients

We are involving the users by letting them design the flowers for a garden themed mosaic that will surround the back and sides of the chair. Work sessions will be held at McBeth in which selected users will design individual brightly colored construction paper flowers that would be made into corresponding ceramic tile flowers. These will become the mosaic along with ceramic leaves and glass tile stems. The large 'arm' will be made of similar 1"x 1" glass tiles and act as a counterpoint to the porcelain tile. A 'Time capsule' will be filled with some photos of the work sessions as well as items selected by the clients, and will be installed behind a dedication plaque on the chair.

'READING CHAIR' Poem

A poem about flowers by Larry Eigner's 'Waters / Places / A Time' is placed on the front of the chair with painted and refired white letters on 2"x 2" porcelain field tiles. The lines of the poem are placed in an offset manner similar to the way the poet placed his words. These are highlighted with different colors of the 1"x 1" glass tiles.

Accessibility and safety

The existing raised curb surrounding the site will be removed to provide a level surface and provide locations where wheelchair users could congregate with others sitting on the chair. The step along the side of the seat in the earlier version has been removed to accommodate the 'companion' seat as suggested by the accessibility reviewer. The front step will be covered with the 2"x 2" tile providing a visual distinction from the other parts of the chair and add more slip resistance.



PLAN VIEW

'READING CHAIR' MAY 2010



THE SILENCE

OF THE FLOWERS

DELIGHTFULLY AIRY

AND WONDEROUS

FRONT VIEW
'READING CHAIR' MAY 2010



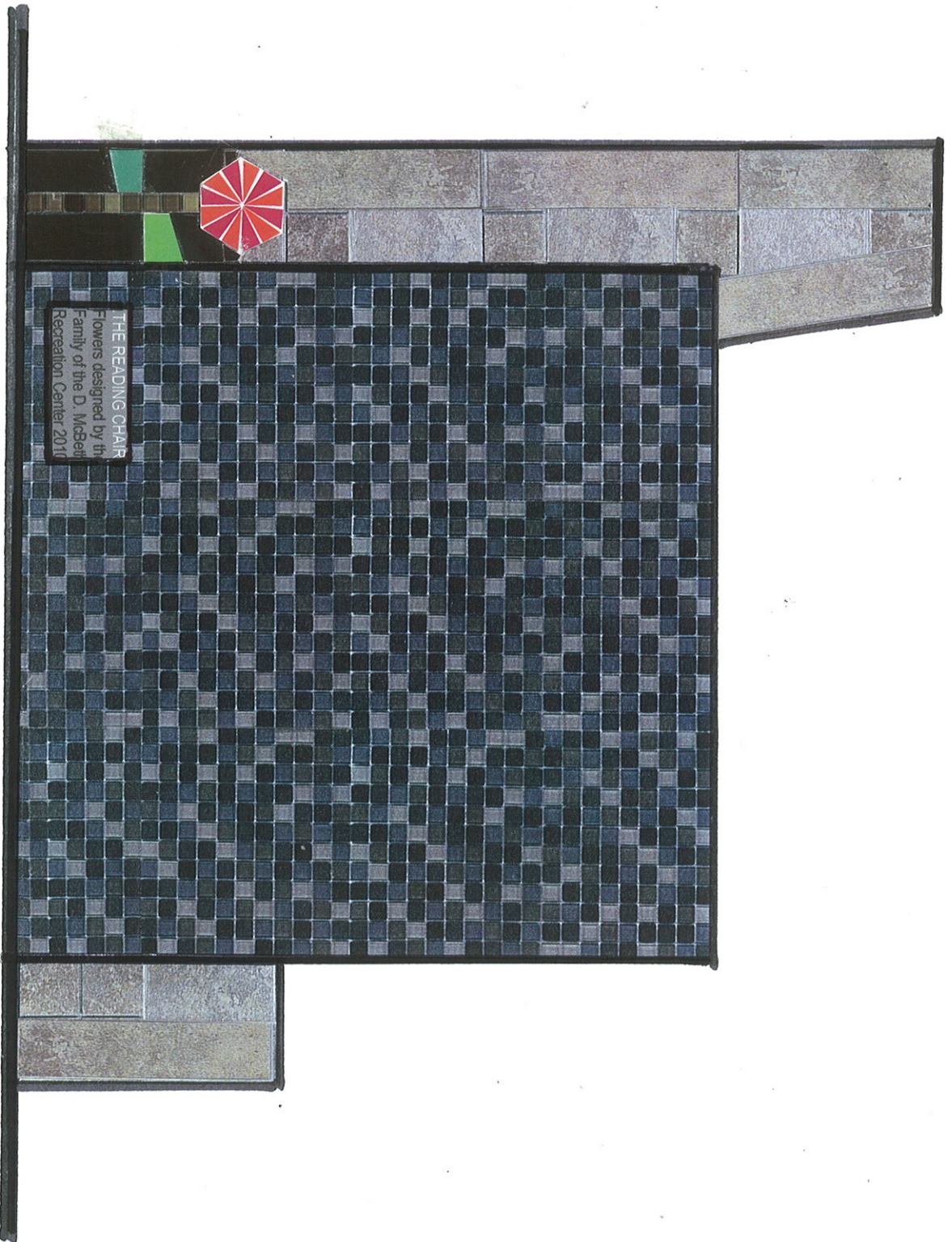
REAR VIEW

'READING CHAIR' MAY 2010



SIDE VIEW

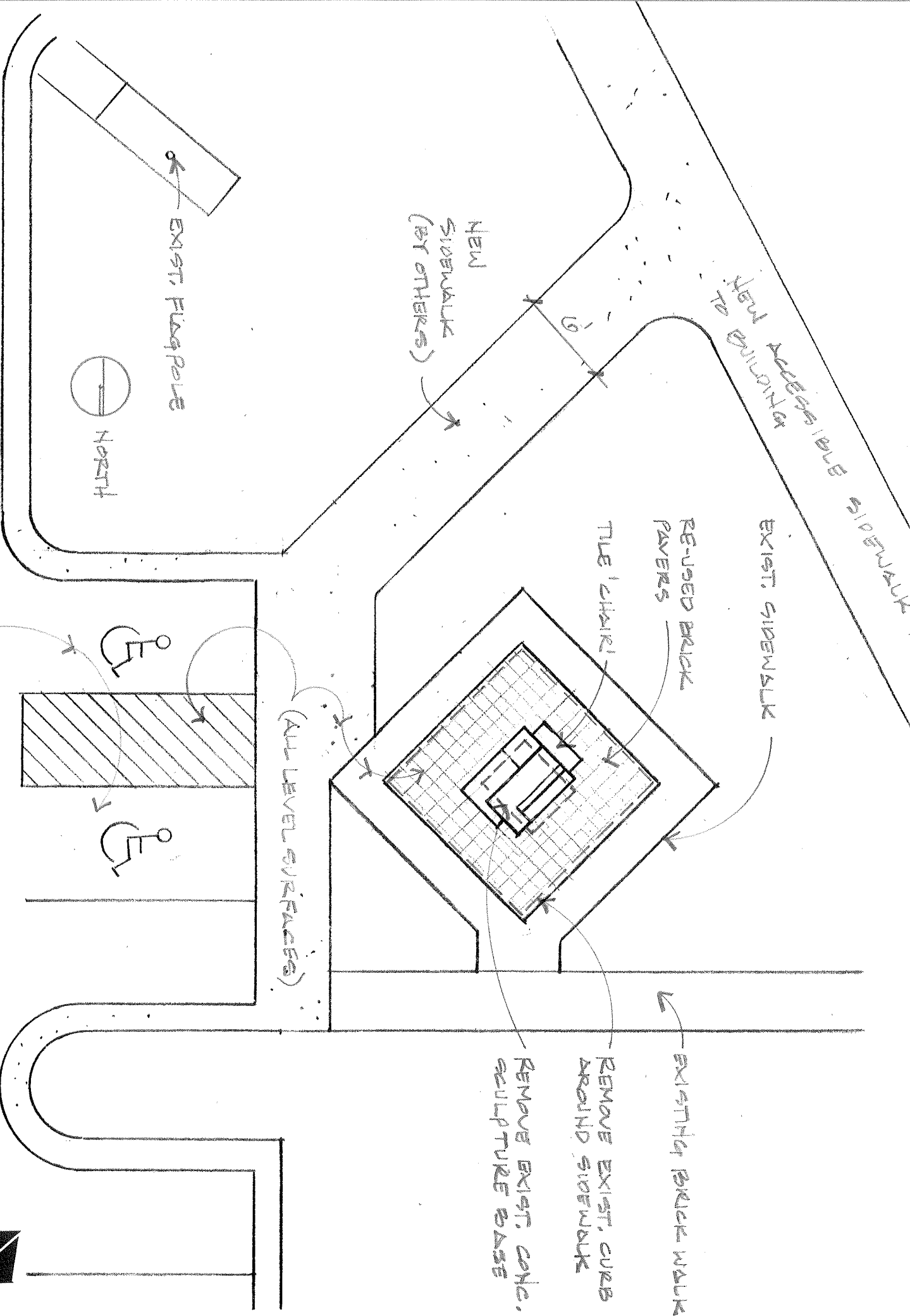
'READING CHAIR' MAY 2010



THE READING CHAIR
Flowers designed by the
Family of the D. McBeth
Recreation Center 2010

SIDE VIEW

'READING CHAIR' MAY 2010

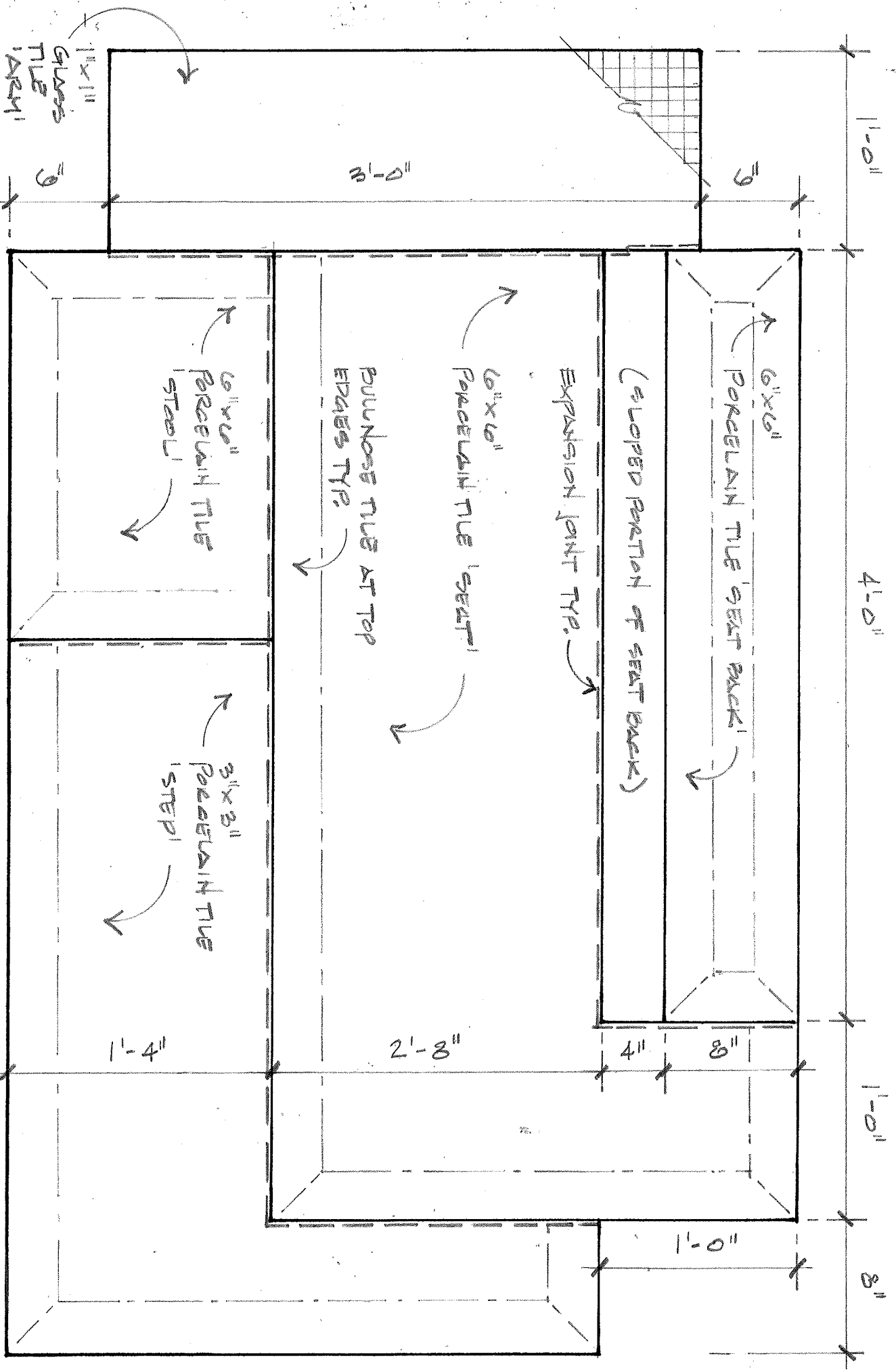


PLAN VIEW

'READING CHAIR' MAY 2010



Studio Maquette

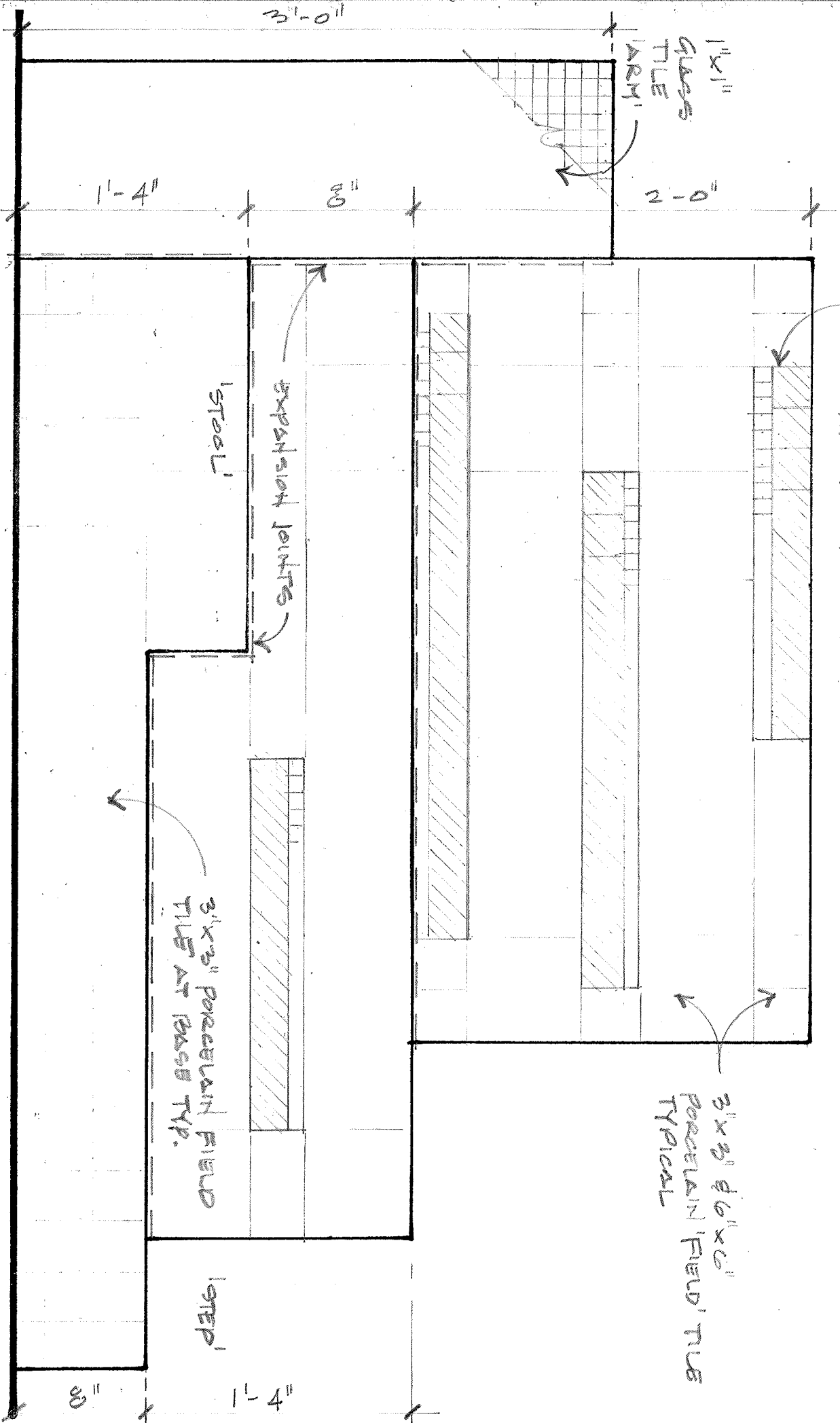


PLAN VIEW

'READING CHAIR' MAY 2010



BARRY EIGNER 'POEM'
PAINTED LETTERING ON REFIRED 2"x2" PORCELAIN TILES
WITH 1"x1" GLASS TILE BORDERS

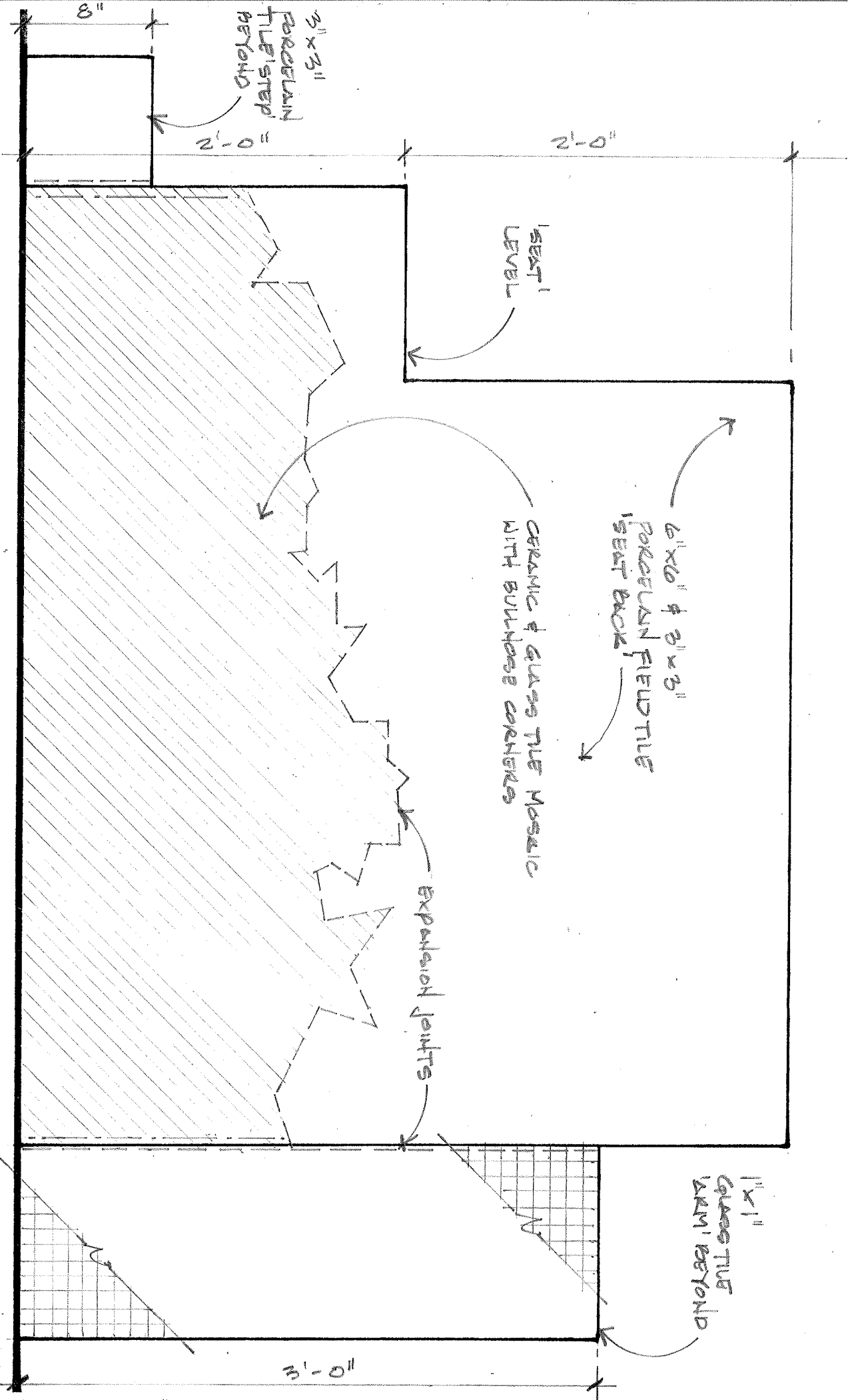


FRONT VIEW

'READING CHAIR' MAY 2010

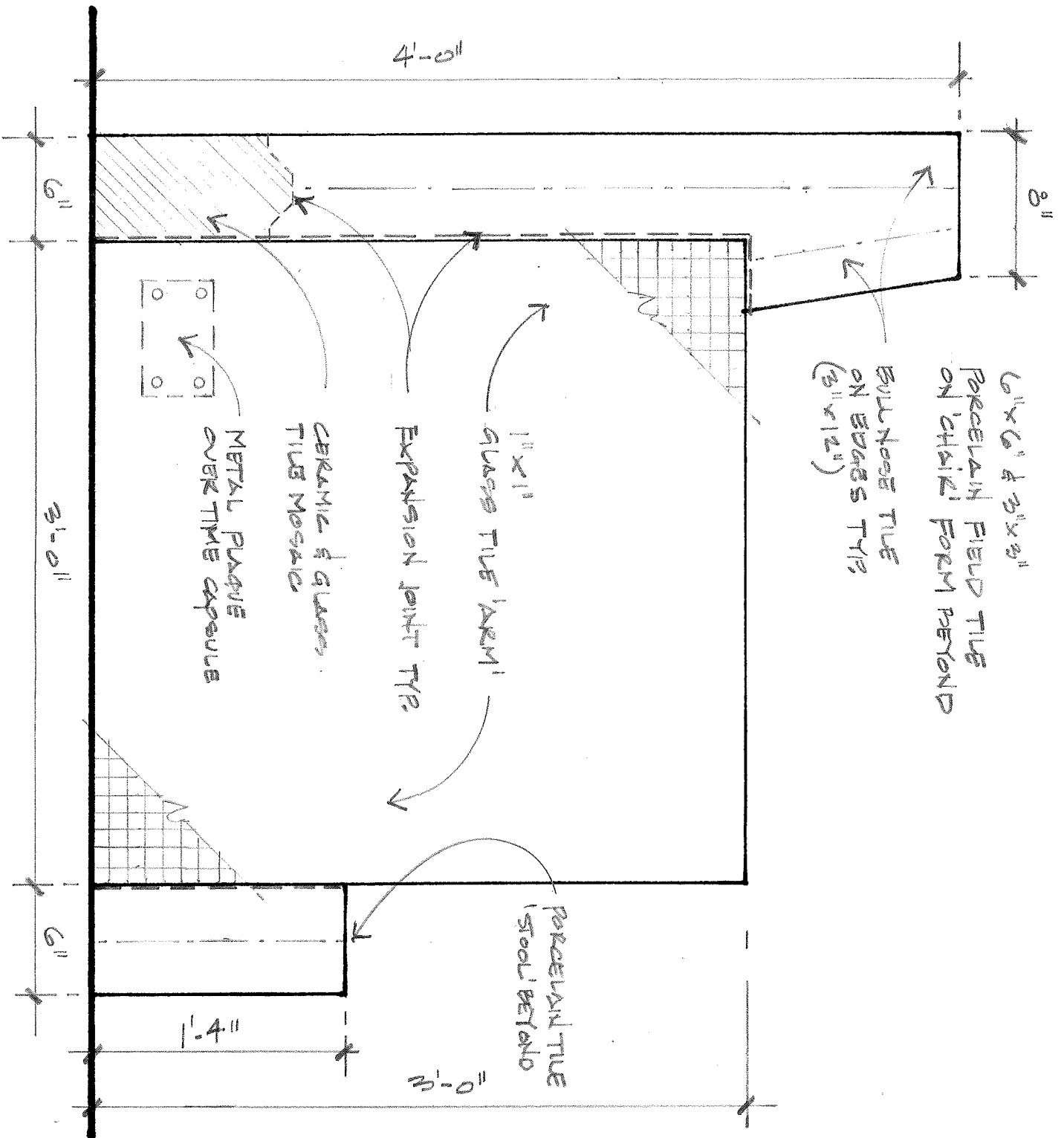


StudioMaquette



REAR VIEW

'READING CHAIR' MAY 2010



SIDE VIEW

'READING CHAIR' MAY 2010

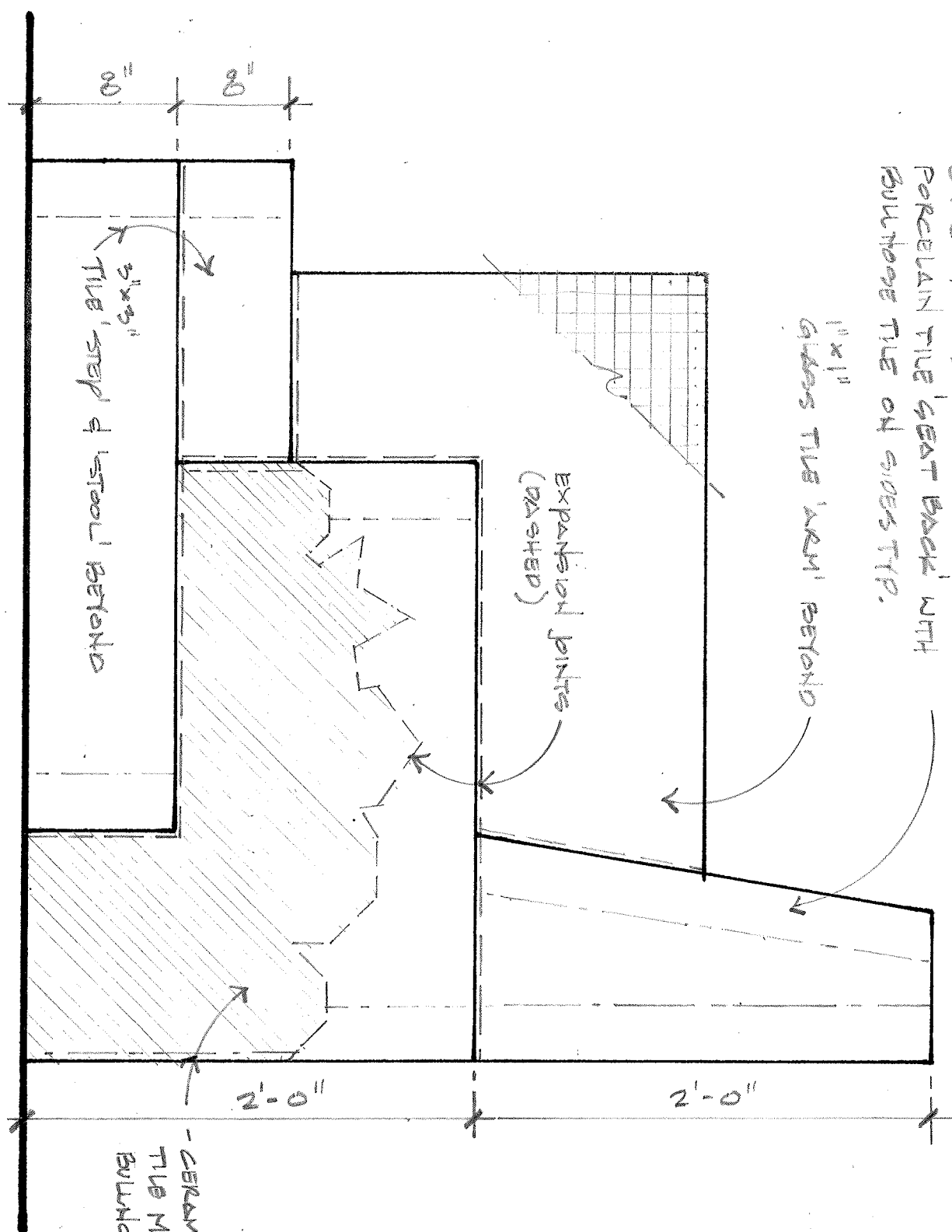
6"x6" & 3"x3"
 PORCELAIN TILE SEAT BACK WITH
 BULLHORN TILE ON SIDES TOP.

1"x1"
 GLASS TILE ARM BEYOND

EXPANSION JOINTS
 (DASHED)

3"x3"
 TILE STEP & STOOL BEYOND

- CERAMIC & GLASS
 TILE MOSAIC WITH
 BULLHORN CORNERS



SIDE VIEW

'READING CHAIR' MAY 2010

Budget for AIPP McBeth Recreation Center 'Reading Chair'

Studio Maquette

May 2010

Demolish existing concrete cube & curb \$ 2,200

Rent equipment & trailer	\$ 500
Dump fee	\$ 200
Labor	\$ 1,500

Pour reinforced concrete foundation \$ 5,700

Stamped Engineer's drawing	\$ 1,000
Rebar	\$ 400
Formwork	\$ 100
Concrete	\$ 1,700
Labor	\$ 2,500

Build concrete block chair \$ 6,400

Concrete blocks	\$ 1,800
Mortar	\$ 1,500
Expansion material	\$ 100
Waterproofing	\$ 500
Labor	\$ 2,500

Install tile \$ 7,600

Field tile	\$ 2,200
Ceramic flower tile	\$ 1,700
Mortar	\$ 500
Grout	\$ 500
Caulk	\$ 200
Labor	\$ 2,500

Site work \$ 2,700

Tree protection / Fencing	\$ 200
Concrete pavers	\$ 300
Pour paver slab	\$ 500
Paver sand	\$ 200
Labor	\$ 1,500

Fees \$ 7,400

Insurance / Permits	\$ 600
Design / Construction fees	\$ 4,000
Accessibility review	\$ 300
Photo documentation	\$ 500
Contingency	\$ 2,000

TOTAL **\$32,000**