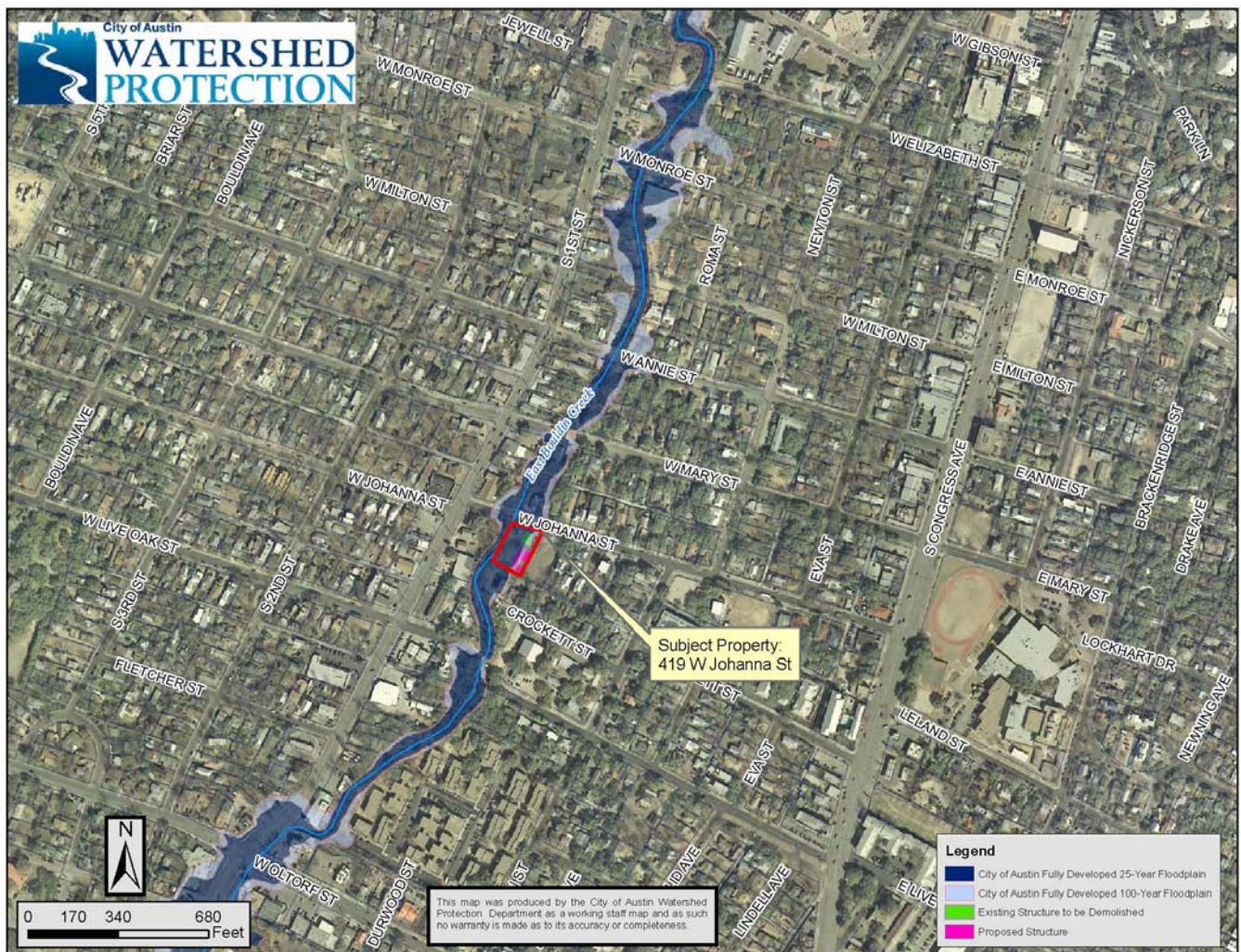


# **Backup Information Packet**

Concerning a public hearing to consider a floodplain variance request by Mr. Brad Lingvai, P.E., to allow the encroachment of a new single-family house into the 25-year and 100-year floodplains of East Bouldin Creek at 419 W. Johanna Street.

1. Site Location Map with Floodplains for 419 W. Johanna Street
2. 419 W. Johanna Street Floodplain Map

# Site Location Map with Floodplains for 419 W. Johanna Street





# 419 W. Johanna Street Floodplain Map

