

RESTORING ELISABET NEY'S FORMOSA



. . . an idyllic existence surrounded by the unspoiled beauties of nature where each individual . . . can grow unhampered according to his own need."

Elisabet Ney to her Texas Friend Bride Neill Taylor of dream Ney and her husband, physician Edmund Montgomery, shared from their earliest youth and that had its most personal expression in Ney's design of her studio in
Austin, Texas 1892-1907

ELISABET NEY MUSEUM



Austin, Texas c. 1905



Elisabet Ney's FORMOSA c.1905

Former American studio of 19th-century European sculptor and Texas cultural advocate Elisabet Ney (1833-1907) and birthplace of Texas Fine Arts Association (today Arthouse) established in 1911 by 119 friends and admirers of Elisabet Ney to perpetuate Ney's memory of and promote her artistic and humanitarian ideals for the people of Texas.

ELISABET NEY MUSEUM

HISTORIC LANDMARK DESIGNATIONS AND RECOGNITIONS BASED ON THE SIGNIFICANCE OF ELISABET NEY

- National Register of Historic Places
- Recorded Texas Landmark
- Recorded Austin Landmark
- Member, *Historic Artists' Homes and Studios* program of National Trust for Historic Preservation
- Official Project, White House *Save America's Treasures* program

AWARDS AND RECOGNITIONS



U.S. Ambassador second from left with Dignitaries and
Director of Stadtmuseum Munster

Recipient of 150 awards and recognition since 1989 including 2008 retrospective on Elisabet Ney at Stadtmuseum Munster sponsored by the U.S. Ambassador to Germany featuring Elisabet Ney Museum in Austin.

ELISABET NEY MUSEUM COMPREHENSIVE RESTORATION

I. ELISABET NEY MUSEUM COMPREHENSIVE RESTORATION MASTER PLAN

See www.ci.austin.tx.us/parks/projects.htm for Elisabet Ney Museum
Comprehensive Restoration Master Plan

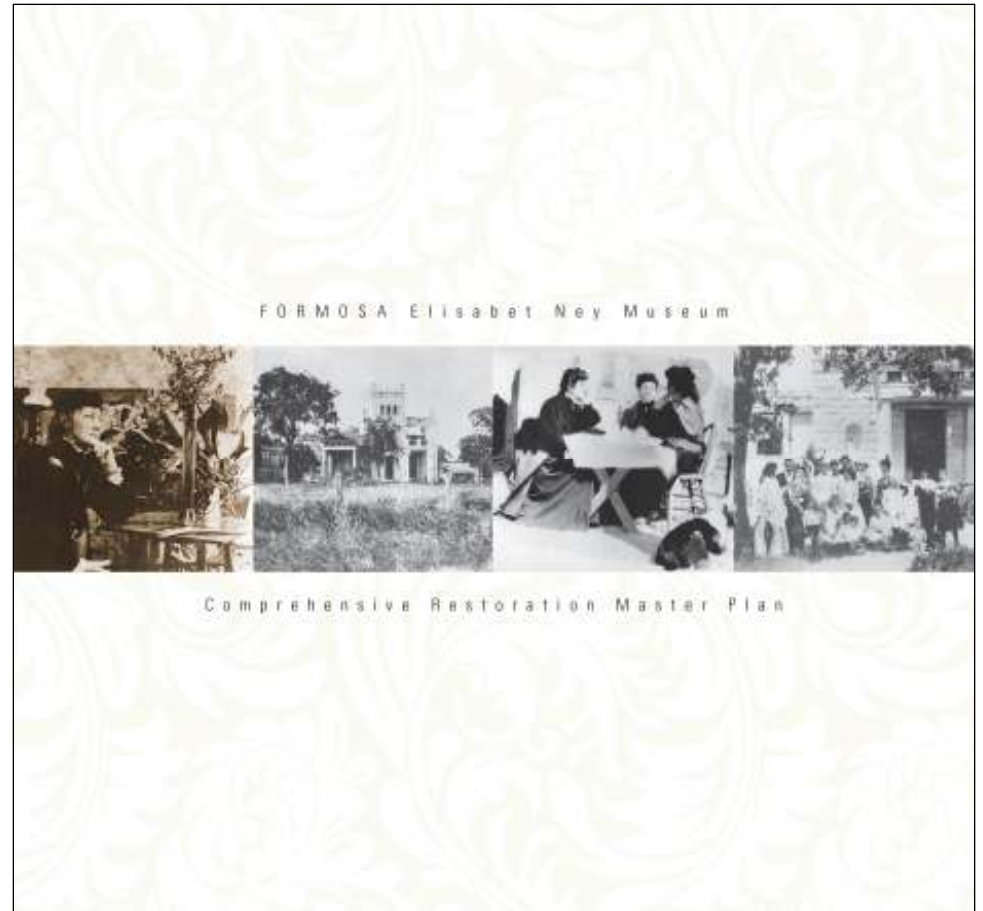
II. COMPREHENSIVE RESTORATION

See www.ci.austin.tx.us/parks/projects.htm for Elisabet Ney Museum
Building, ADA Accessibility and Landscape Improvements CIP #7551.002
project materials

ELISABET NEY MUSEUM COMPREHENSIVE RESTORATION MASTER PLAN

FUNDERS OF ELISABET NEY MUSEUM COMPREHENSIVE RESTORATION MASTER

- U.S. Save America's Treasures Program
- National Trust for Historic Preservation
- Texas Historical Commission
- State and National Foundations
- City of Austin Parks and Recreation Department



REVIEWS OF MASTER PLAN

*CITY OF AUSTIN

Briefings were given to the following for public comment:

- Austin Parks and Recreation Board
- Austin Historic Landmark Commission
- Elisabet Ney Museum Comprehensive Restoration Campaign Committee
- Hyde Park Neighborhood Association
- General Public

Master Plan was displayed in Museum for 3 months for public comment.

* Approvals by applicable City boards and commissions and Austin City Council were not allowed because approvals are part of the implementation stage of City of Austin projects.

*APPROVALS OF MASTER PLAN

U.S. DEPARTMENT OF INTERIOR TEXAS HISTORICAL COMMISSION

- * The Elisabet Ney Museum Restoration is legally required to abide by the Secretary of the Interior's *Standards for the Treatment of Historic Properties* due to the Elisabet Ney Museum's landmark designations and the restoration program for the Ney funded by the *Save America's Treasures* program, the National Trust for Historic Preservation and the Texas Historical Commission.

FORMOSA Elisabet Ney Museum



Comprehensive Restoration Master Plan: Landscape

ELISABET NEY MUSEUM COMPREHENSIVE RESTORATION MASTER PLAN

LANDSCAPE PLAN COMPONENTS

- I. Landscape History
- II. Existing Conditions
- III. Analysis of Continuity and Change
- IV. Landscape Restoration Treatment Plan
- V. Landscape Restoration Phasing
- VI. Opinion of Probable Costs

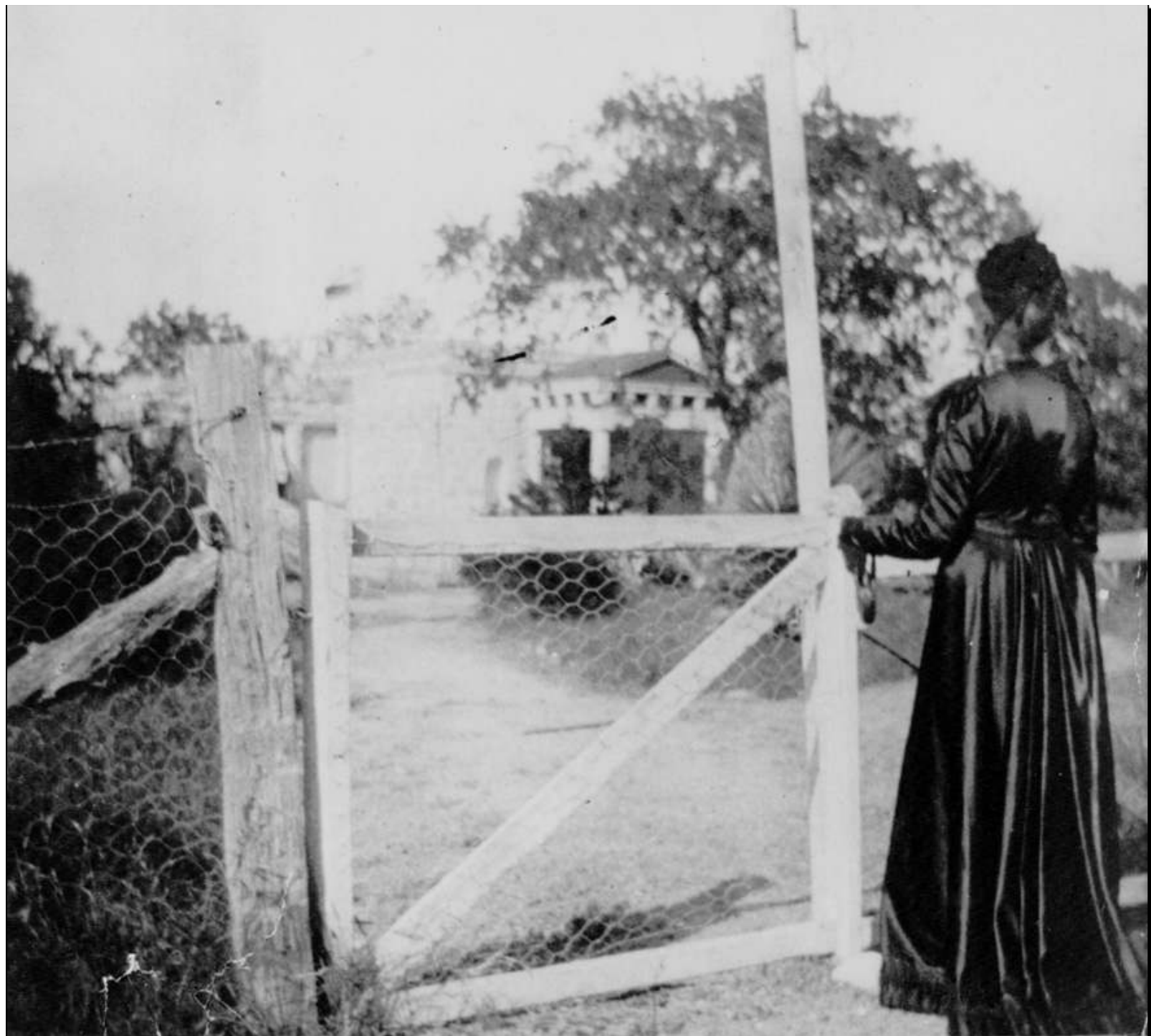


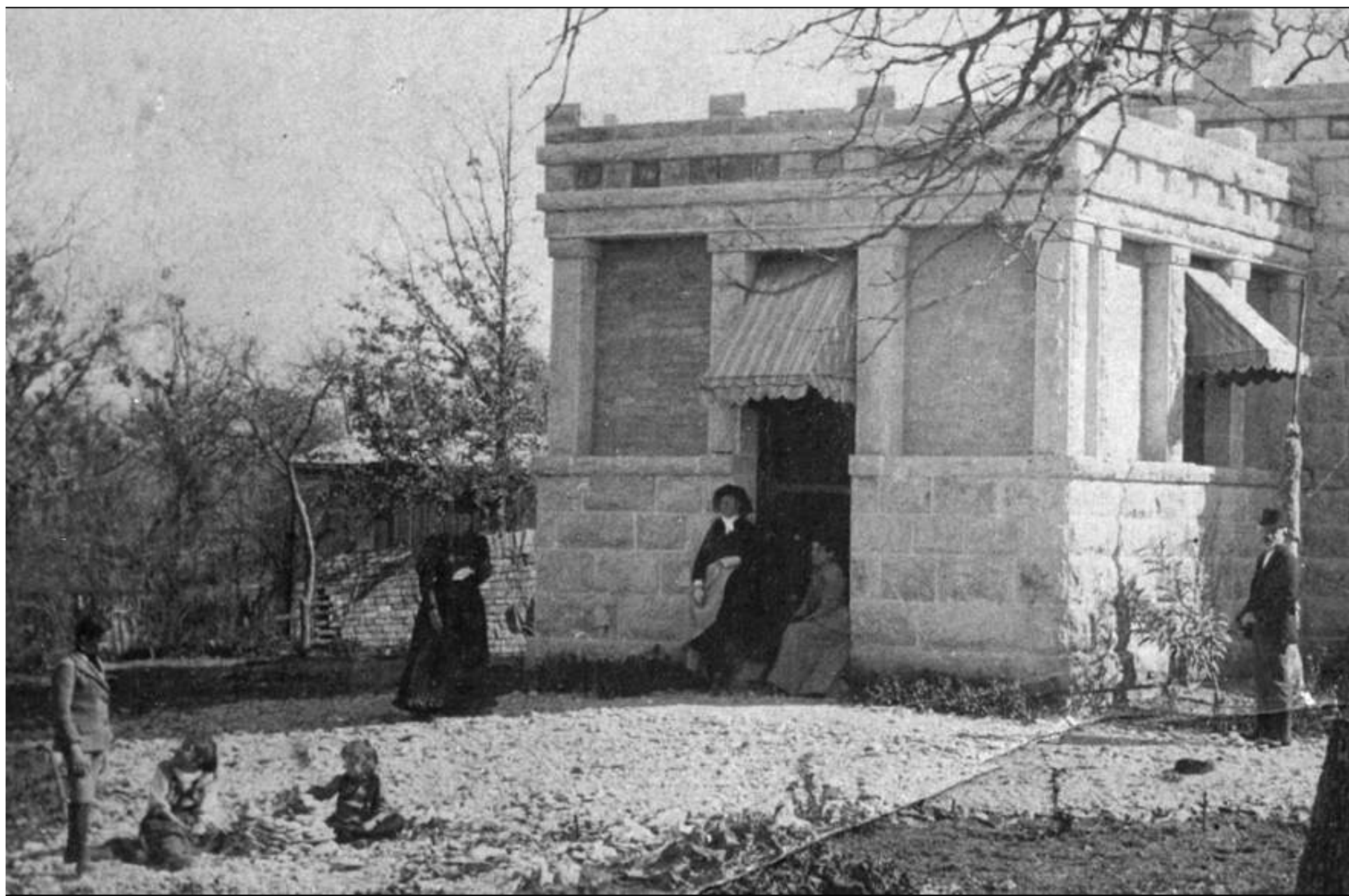
Terrosa.

*Studio of Elisabet Hey, at Hyde Park, Austin, Tex
and in remembrance of the pleasant call 1894.*







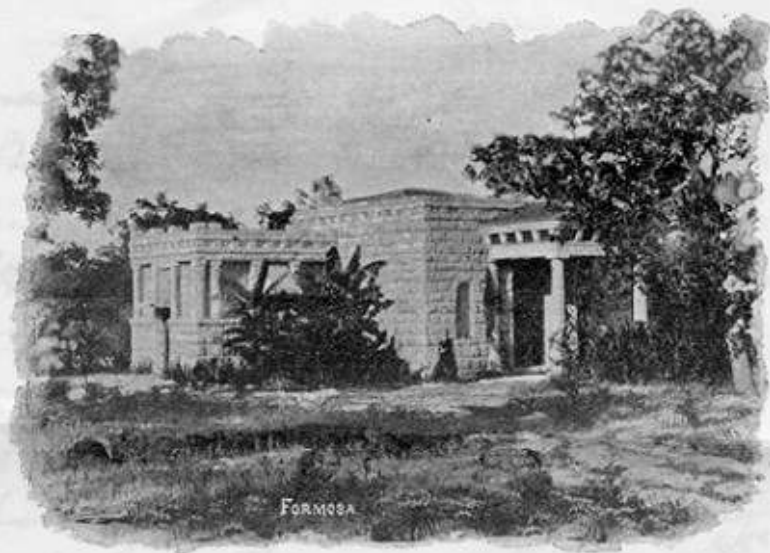












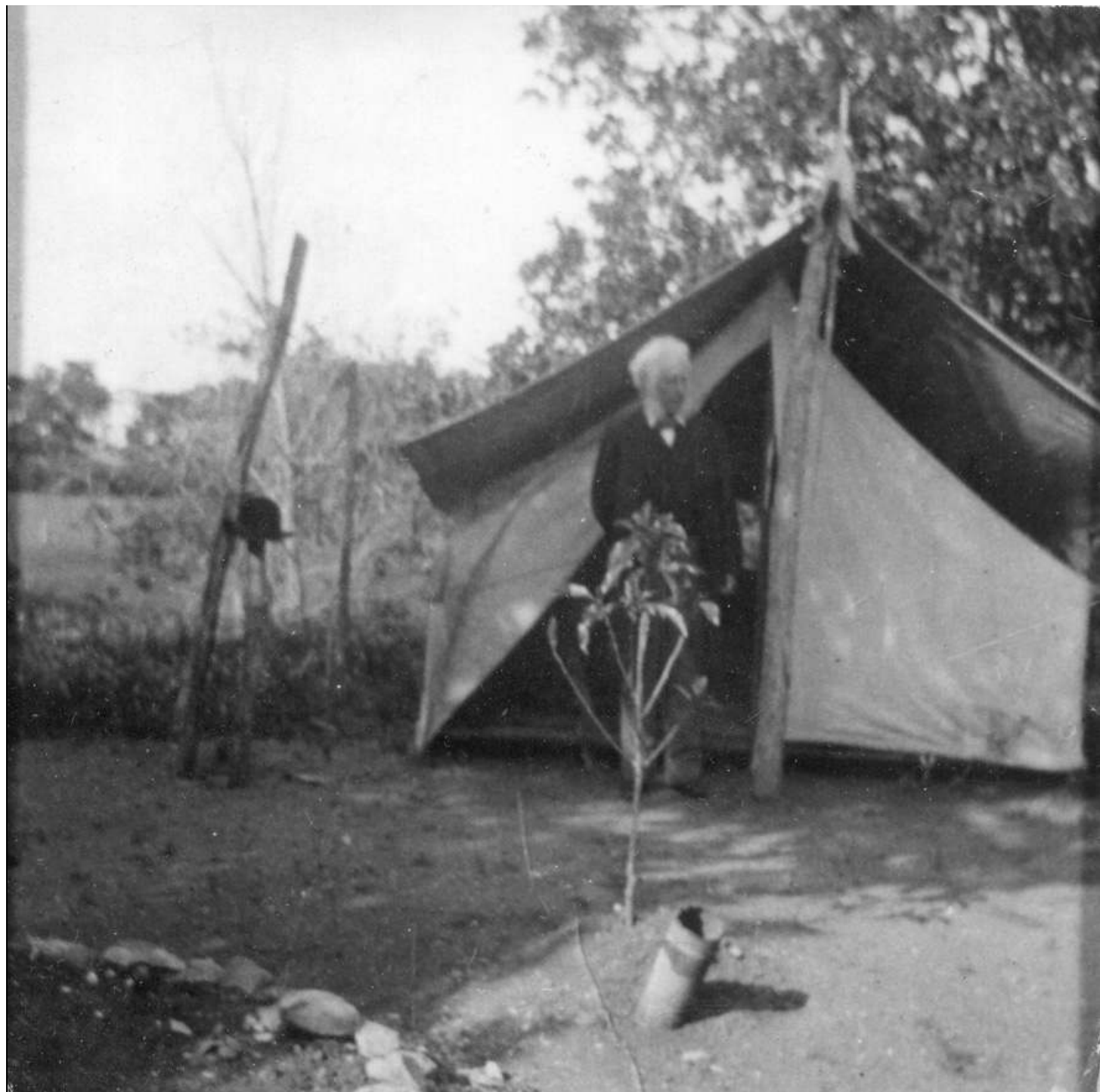
Hyde Park, Austin, Texas, Oct 23 1900.

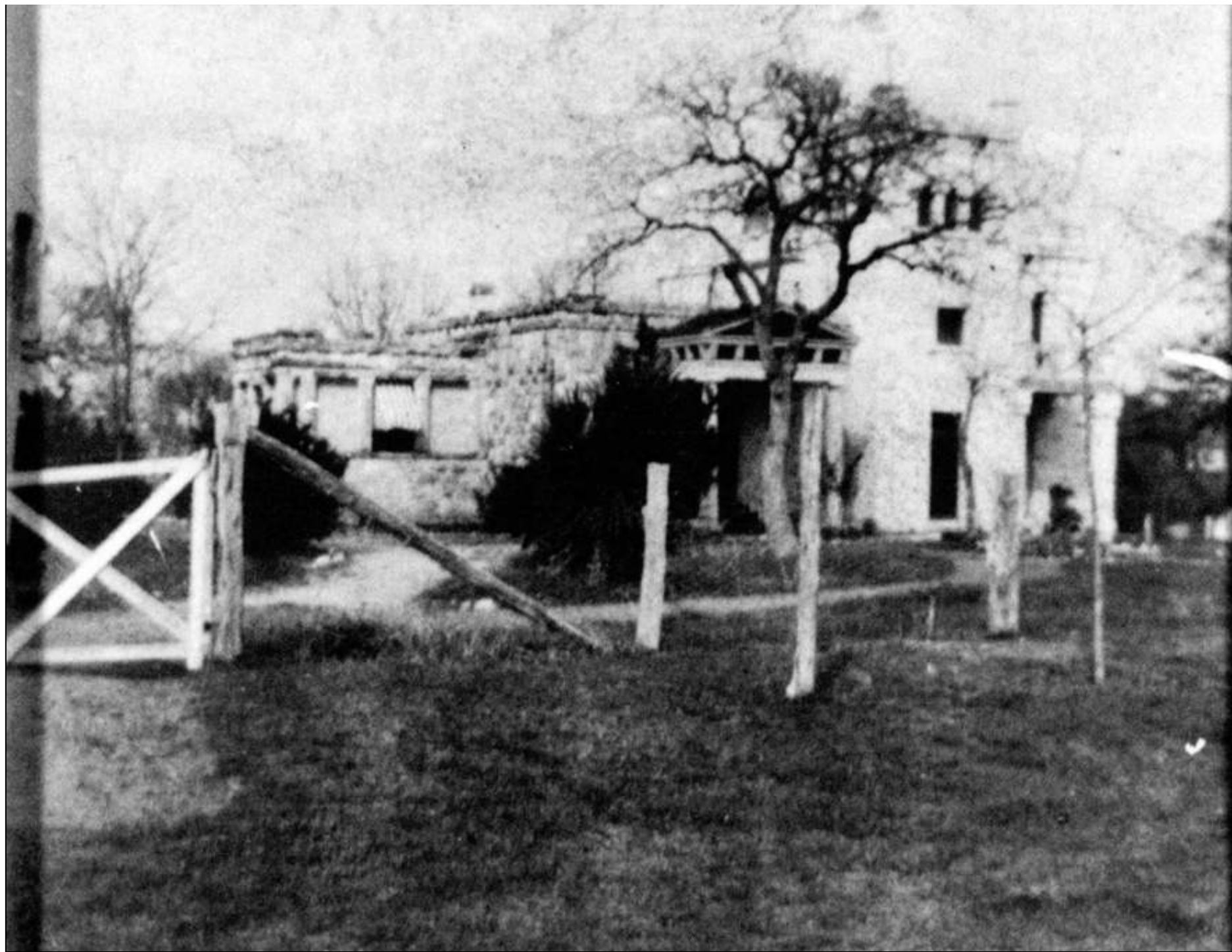
Miss Margaret Bell Newson
San Antonio

Dear Madame

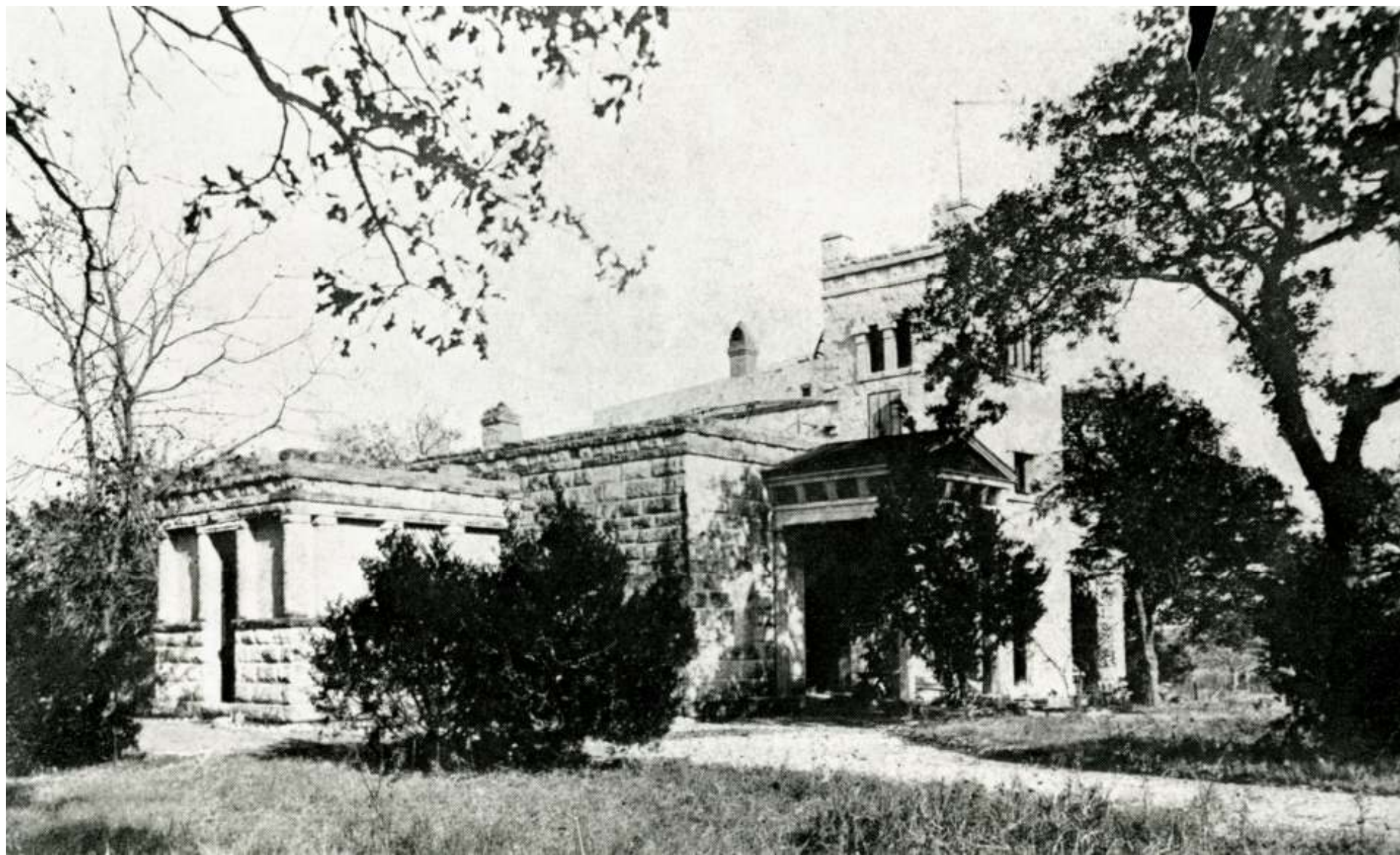
In answer to your inquiry
regarding Gen. S. Kean's bust, I
beg to say, that I really do not know.
whether the cast you mention is sold
or not.

Mr. Lee H. Adams, Supt. of the Fair's
art department, had most strongly
in mind, and explained to me, that his













ELISABET NEY MUSEUM LANDSCAPE 2007

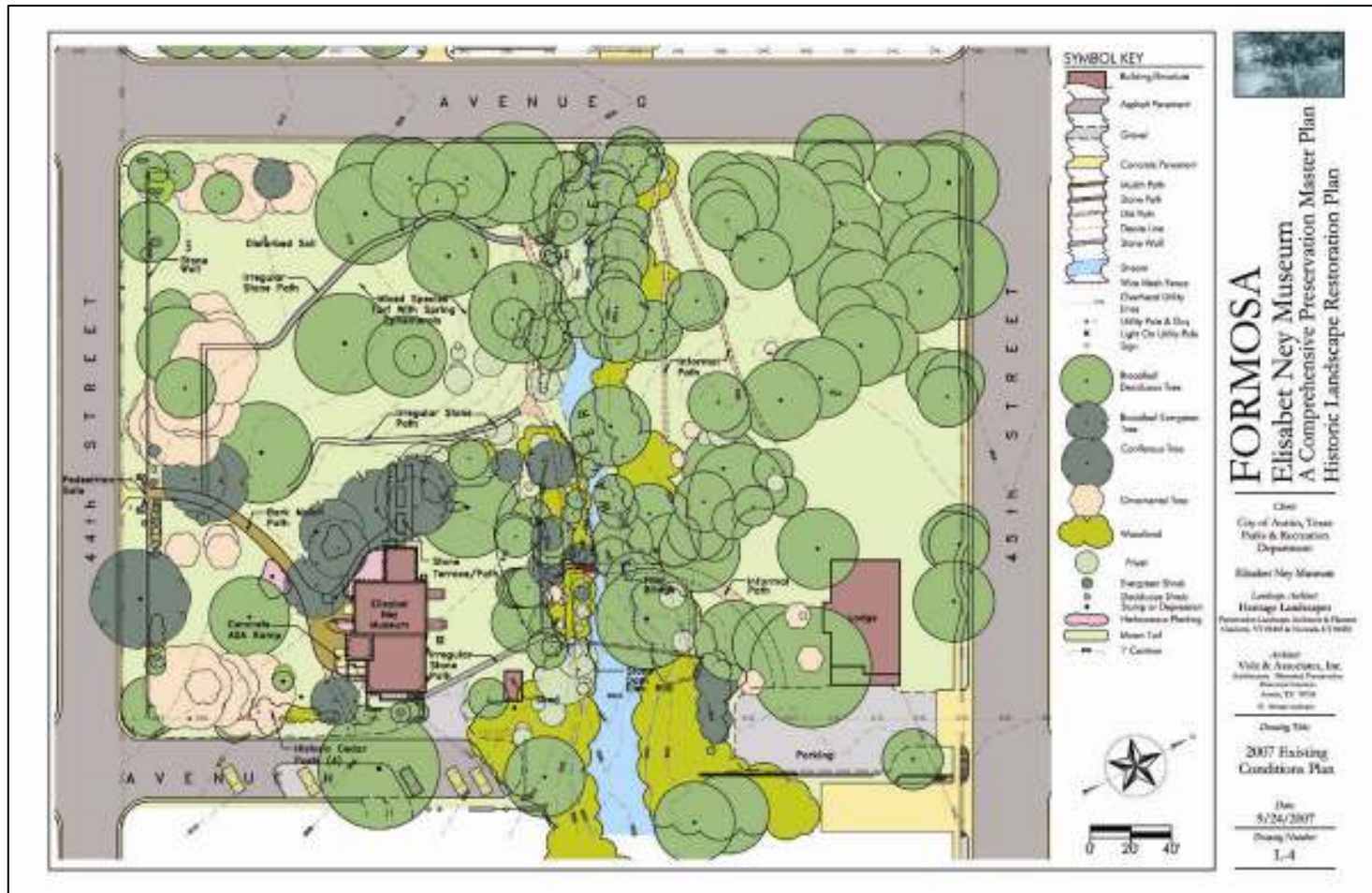


- Mown Lawn instead of native prairie
- Declining Historic Trees
- Loss of Historic Trees
- Invasive Species
- Non Ney-Era Ornamental Plantings



- Loss of Ney's carriage drive
- Loss of Ney's Vegetable Garden
- Loss of Ney's perimeter post and wire fencing

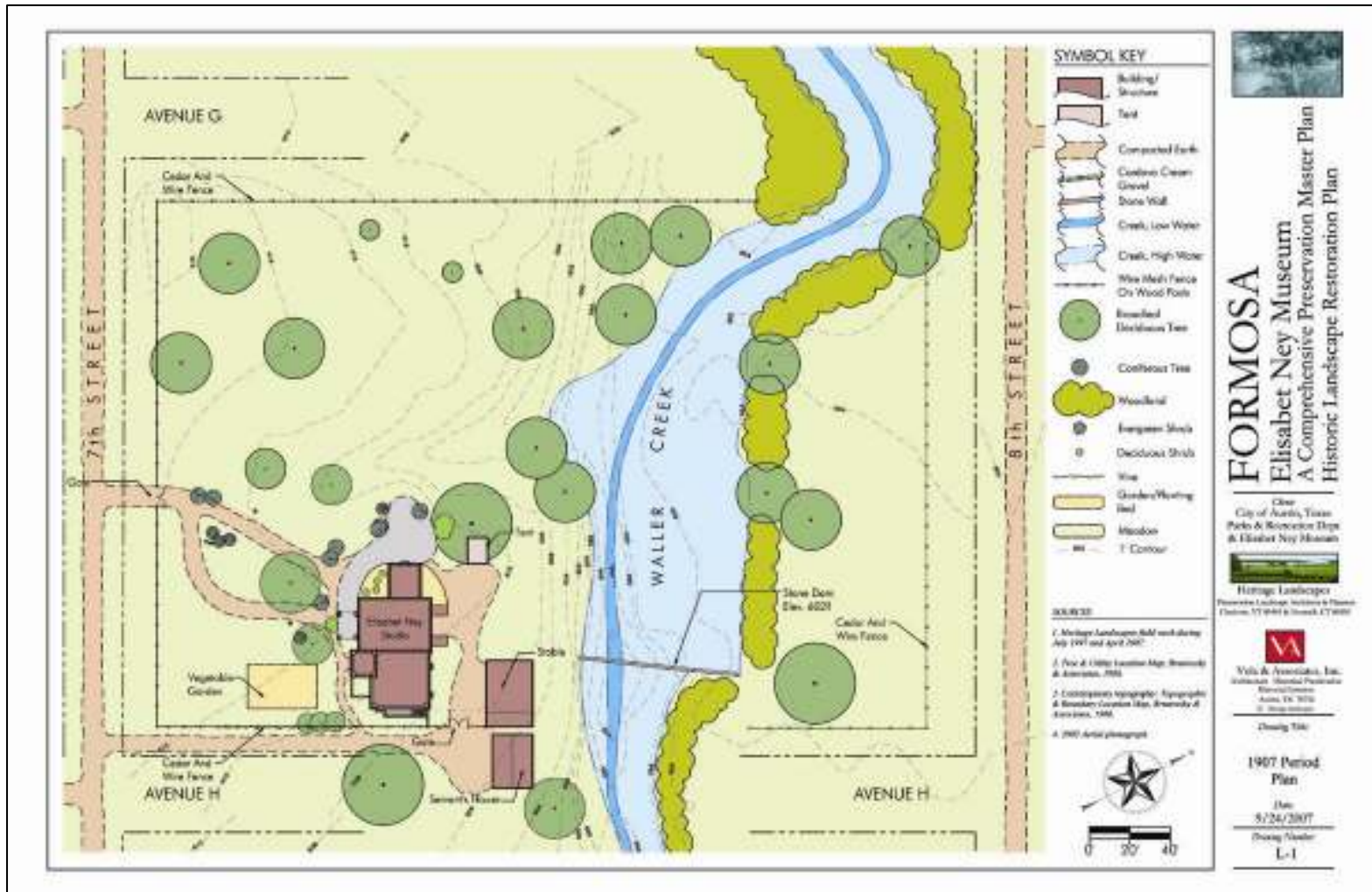
ELISABET NEY MUSEUM LANDSCAPE 2007



Landscape Character: Closed, Manicured, New Exotic Plants, Mowed Lawn, Invasive Species

Buildings: 1 historic, 2 modern additions. Loss of servant's quarters and barn

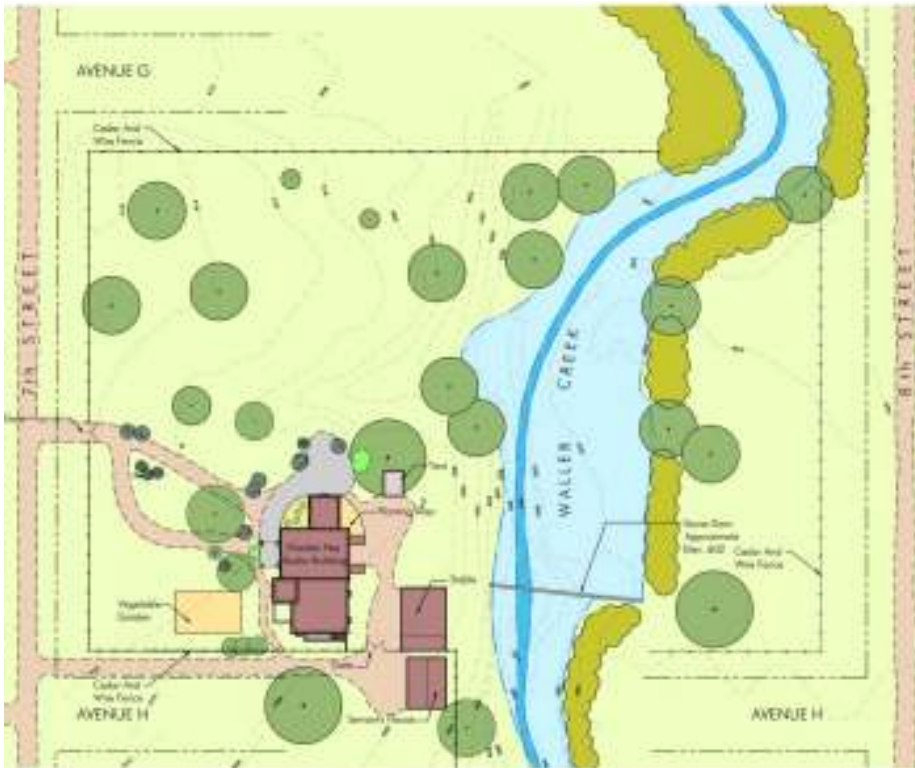
ELISABET NEY'S STUDIO LANDSCAPE -1907



Landscape Character: Open, Native Prairie, Lake, Live Oaks, Vegetable Garden, Perimeter Wire Fence, Carriage Drive

3 Buildings: Studio, Servant's Quarters, Stable

COMPARISON OF ELISABET NEY FORMOSA IN 1907 AND ELISABET NEY MUSEUM IN 2007



FORMOSA, 1907



ELISABET NEY MUSEUM, 2007

ELISABET NEY MUSEUM CIP #7551.002



LANDSCAPE IMPROVEMENTS

Restoration of Elisabet Ney's carriage drive, tent site and west terrace
Removals of invasive species and non Ney trees and plantings
Restoration of Ney's native prairie, post oaks and wildflowers
Restoration of Ney's post and wire fencing along east property line

KEY

- PROTECTION FENCING, AREA TO BE PROTECTED FROM ALL CONSTRUCTION IMPACTS
- HISTORIC TREE WITH PROTECTION
- HISTORIC TREE TO BE REMOVED AND WOOD STOCKPILED. RETAIN AND PROTECT STUMPS FOR DETERMINATION OF REPLACEMENT PLANT LOCATIONS. SEE DRAWINGS L3.1
- TREE OR SHRUB TO BE REMOVED
- VEGETATION TO BE REMOVED
- HISTORIC TREE TO BE REMOVED
- OVERHEAD UTILITY LINE
- 2' CONTOUR

GENERAL NOTES:

- MARK AND REVIEW MATERIALS TO BE REMOVED BY OWNER'S REPRESENTATIVE PRIOR TO REMOVAL OPERATIONS.
- REMOVE TREES INDICATED FOR REMOVAL INCLUDING SHRUBS AND HERBACEOUS PLANTING WITHIN THE REMOVED TREE FOOTPRINT.
- REMOVE PLANT MATERIALS ADJACENT TO BUILDING FOR DRAIN INSTALLATION.
- COORDINATE SITE REMOVALS WITH REMOVALS AS INDICATED ON DRAWING W2.0.
- CONTRACTOR TO REFRAIN FROM ANY USE OF AVENUE H FOR CONSTRUCTION OPERATIONS.
- CONSTRUCTION ACCESS FOR EQUIPMENT AND MATERIALS IS LIMITED TO THE AVENUE G LOCATION AS INDICATED ON L1.0. CONTRACTOR IS TO PROTECT EXISTING CURB AND GUTTER FROM DAMAGE DURING CONSTRUCTION OPERATIONS.
- EXISTING HISTORIC CEDAR FENCE POSTS TO REMAIN IN PLACE DURING CONSTRUCTION. DO NOT DISLODGE, DISTURB OR OTHERWISE AFFECT IN ANY WAY THE FENCE POSTS.

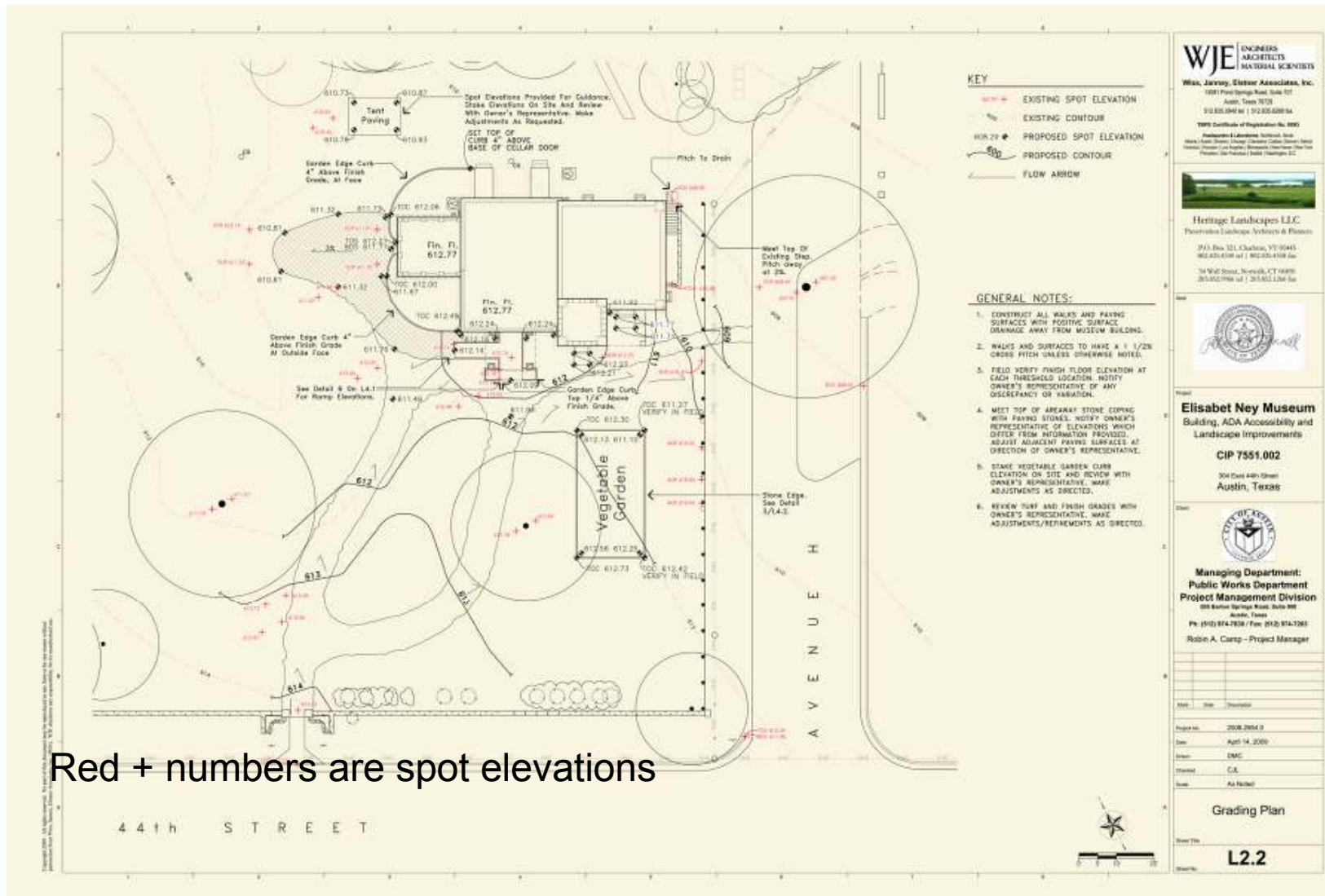
VEGETATION LABEL KEY

Tree Name - Genus/Species	Condition Of Canopy	Number Of Stems	Root Restriction	Trunk Condition
Cb				
Cl				
Cr				
Ep				
Kf				
Ll				
Lu				
Map				
Md				
Pg				
Pr				
Pu				
Qr				
Qv				
Sap				
Up				
Us				
Yg				

TREE AND SHRUB (CODES)

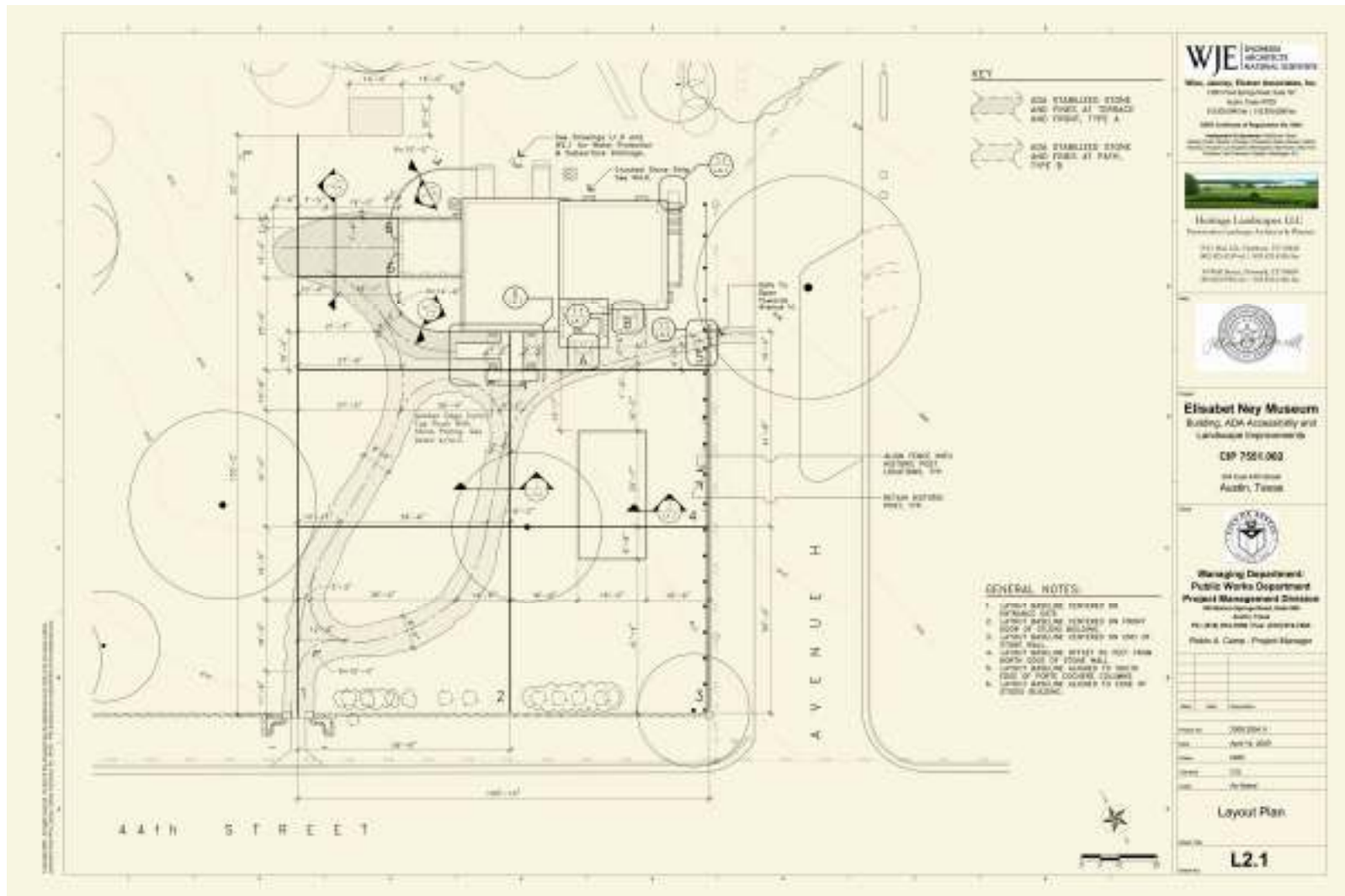
Code	Botanical Name	Common Name
Cb	Catalpa bignonioides	Southern Catalpa
Cl	Cercis canadensis	Redbud
Cr	Celtis laevigata	Hickberry
Ep	Campsis radicans	Trumpet Vine
Kf	Ilex opacifolia	Mountain Laurel
Ll	Lagerstroemia fauriei	Crape Myrtle
Lu	Lagerstroemia indica	Crape Myrtle
Map	Malus species	Glossyleaf Privet
Md	Nandina domestica	Heavenly Bamboo
Pg	Prospice glandulosa	Honey Mesquite
Pr	Prunus species	Flowering Plum
Pu	Punica granatum	Pomegranate
Qr	Quercus rubra	Red Oak
Qv	Quercus virginiana	Live Oak
Sap	Spiraea species	Siberian Elm
Up	Ulmus pumila	Mexican Buckeye
Us	Ulmus speciosus	Elm
Yg	Yucca gloriosa	Spanish Bayonet

LANDSCAPE GRADING AND SURFACE DRAINAGE

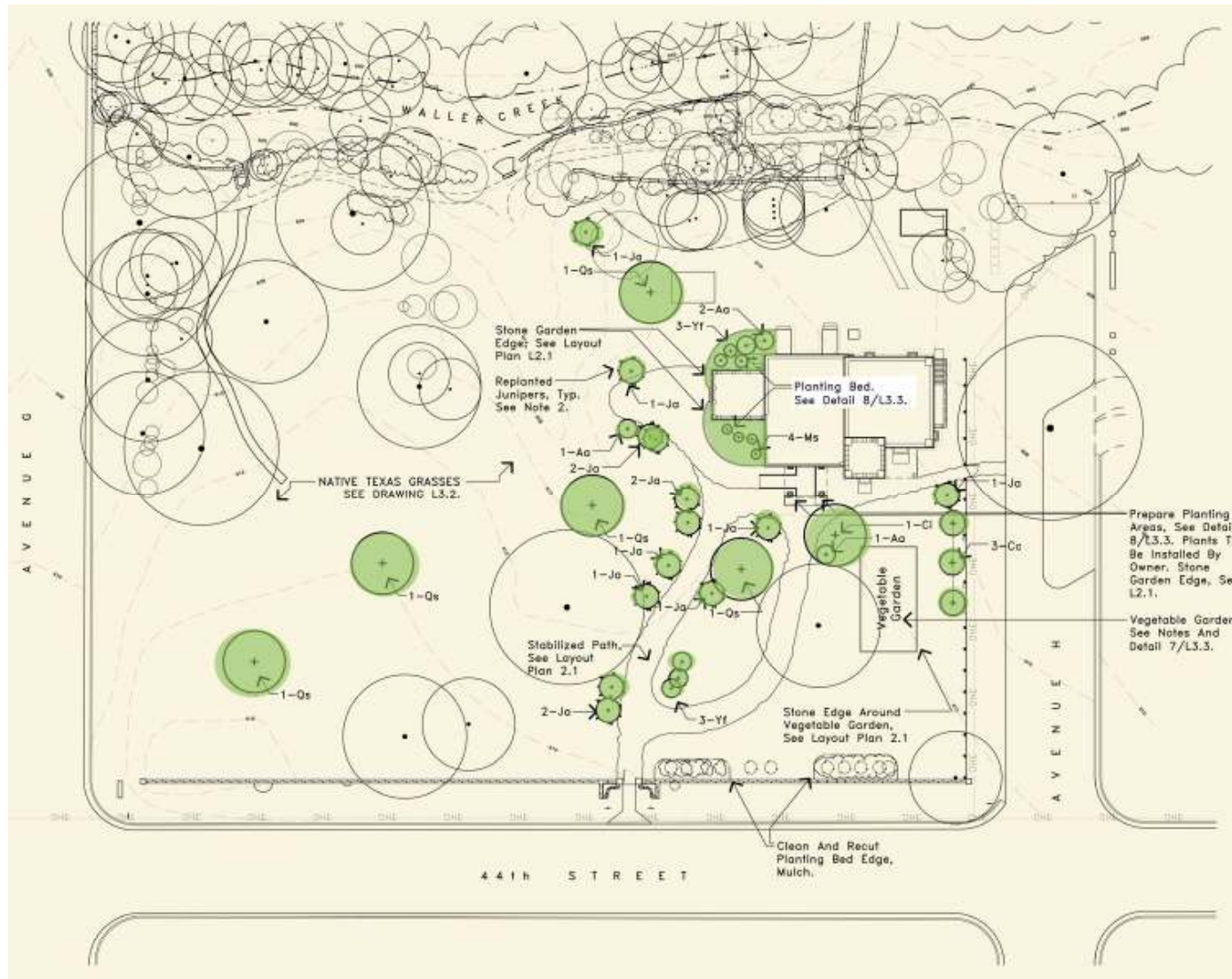


Red + numbers are spot elevations

LAYOUT OF NEY CARRIAGE DRIVE AND WEST TERRACE



LANDSCAPE RESTORATION PLANTINGS



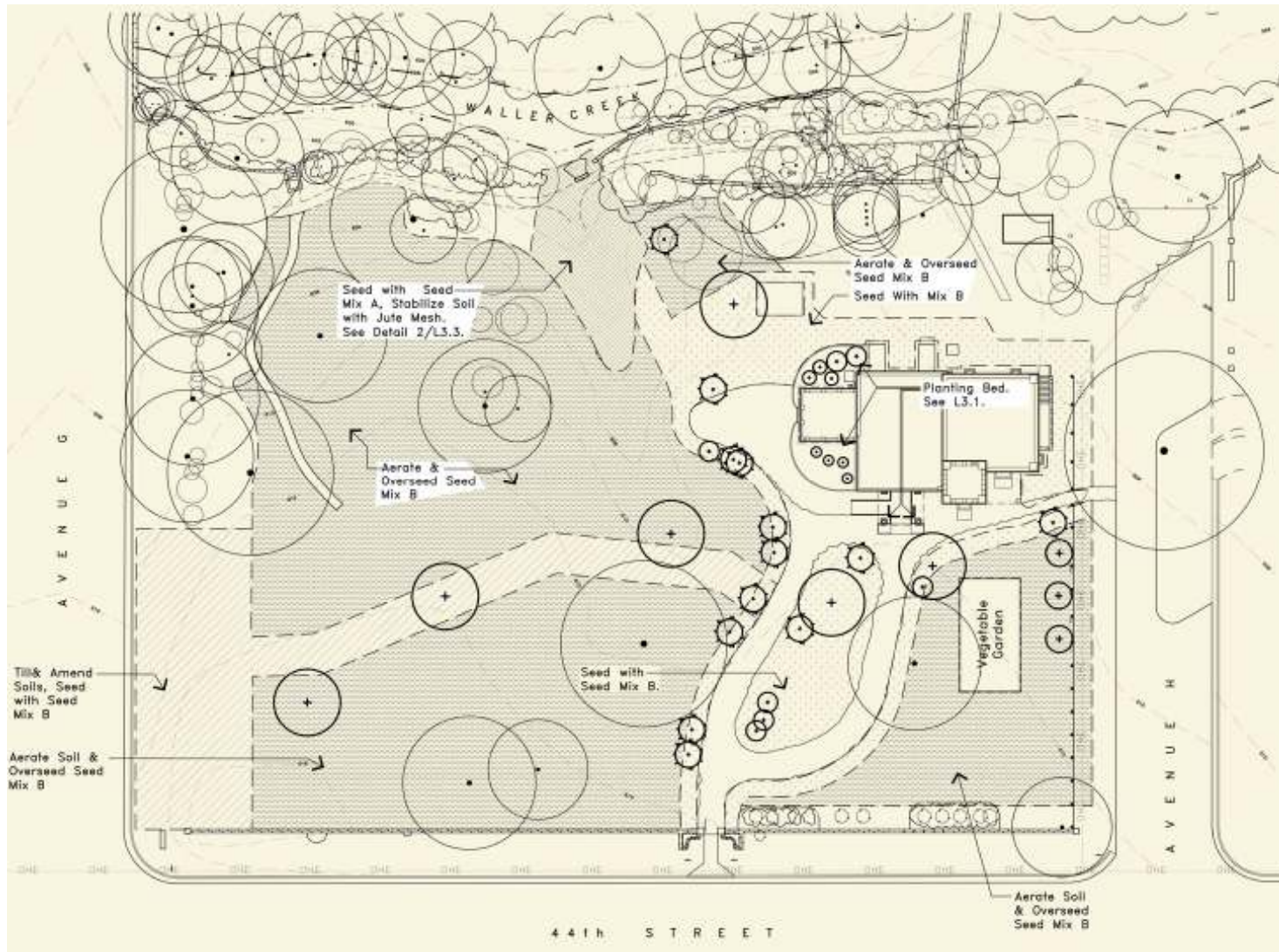
NEW TREES-22

- 5 Qs Post Oak
- 1 Ci Pecan
- 3 Cc Redbud
- 13 Ja Ashe Juniper

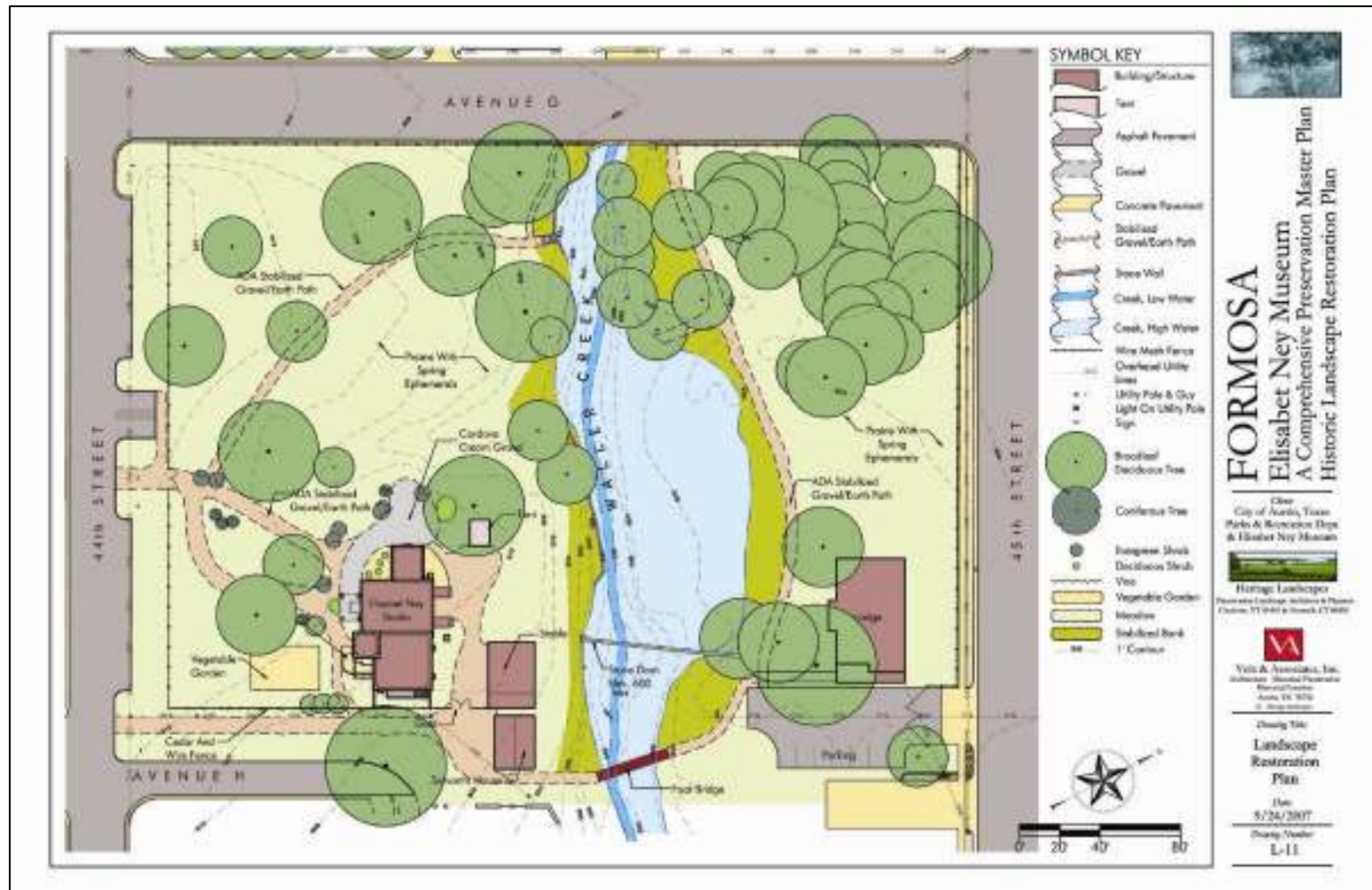
NEW SHRUBS-14

- 4 Aa Agave
- 4 Ms Banana
- 6 Yf Yucca

PRAIRIE OVERSEEDING. RETENTION OF SPRING EPHEMERALS



LANDSCAPE RESTORATION PLAN FOR RETURN OF ELISABET NEY'S FORMOSA



Return to native Texas landscape with Ney landscape features.
 Rebuild auxiliary buildings for needed museum services.

COMPARISON OF 2007 ELISABET NEY MUSEUM AND PROPOSED LANDSCAPE RESTORATION OF ELISABET NEY'S FORMOSA

