



**AUSTIN PARKS AND RECREATION DEPARTMENT**  
**URBAN FORESTRY BOARD**  
**AUGUST 18, 2010**

# RESTORING ELISABET NEY'S FORMOSA



*. . . an idyllic existence surrounded by the unspoiled beauties of nature where each individual . . . can grow unhampered according to his own need. "*

Elisabet Ney to Texas Friend Bride Neill Taylor, circa 1905

Dream shared by Elisabet Ney and her husband physician Edmund Montgomery that had its most personal expression in Elisabet Ney's design of *Formosa*, her last studio in Austin, Texas,

1892-1907

# AUSTIN, TEXAS, circa 1905

## ELISABET NEY'S FORMOSA, circa 1905



Austin, Texas c. 1905



Elisabet Ney's FORMOSA c.1905

The Elisabet Ney Museum is the former American studio of noted 19<sup>th</sup>-century European sculptor and Texas cultural advocate Elisabet Ney (1833-1907), established in Austin, Texas in 1892. It is also the birthplace of Texas Fine Arts Association (today Arthouse) established with the Elisabet Ney Museum in 1911 by 119 friends and admirers of Elisabet Ney to perpetuate Ney's memory and promote her artistic and humanitarian ideals for the people of Texas.



## HISTORIC LANDMARK DESIGNATIONS AND RECOGNITIONS BASED ON THE SIGNIFICANCE OF ELISABET NEY

- Recorded National Register Property
- Recorded Texas Landmark
- Recorded Austin Landmark
- Member, National Trust for Historic Preservation Historic Artists' Homes and Studios program with former studios of Georgia O'Keefe, Jackson Pollock and others. One of only 32 studio museums in country selected for program
- Official Project, U.S. White House Save Americas Treasures program

# AWARDS AND RECOGNITIONS



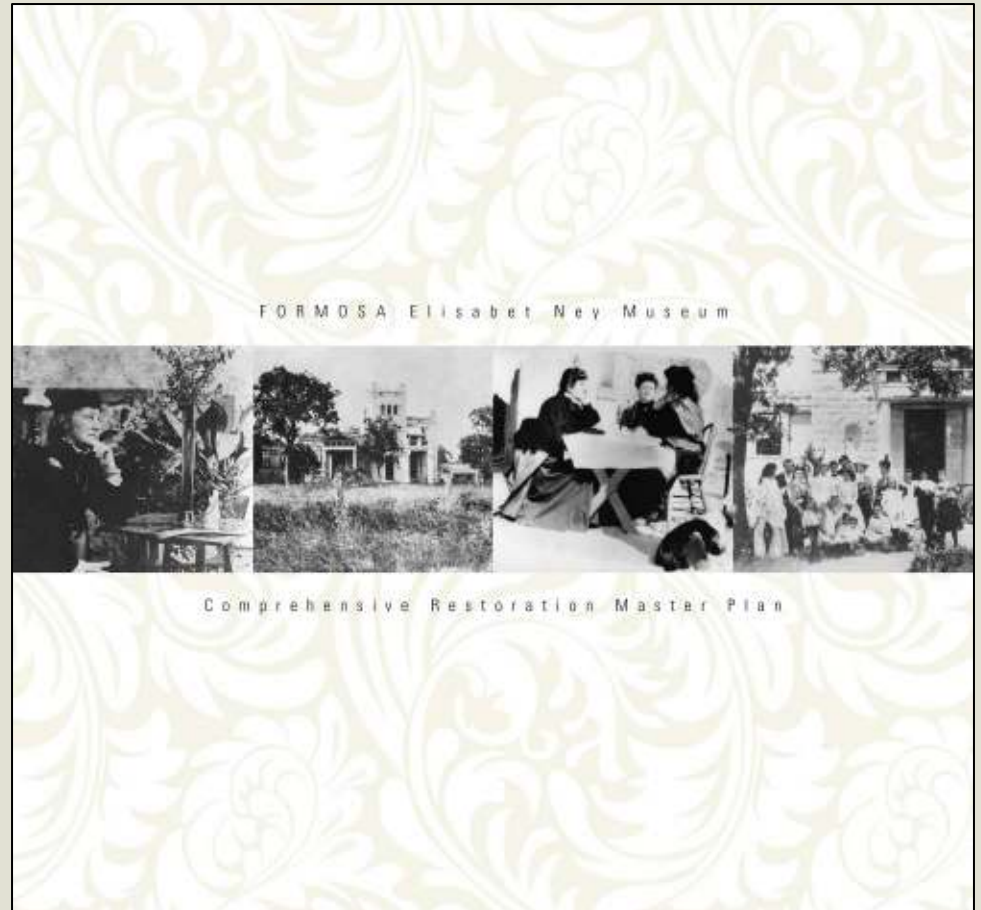
**U.S. Ambassador second from left with Dignitaries  
and Director of Stadtmuseum Munster**

The Elisabet Ney Museum has been the recipient of over 150 awards and recognitions since 1989 including the 2008 retrospective on Elisabet Ney at the Stadtmuseum Munster in Munster, Germany, Ney's birthplace, sponsored by the U.S. Ambassador to Germany. The Elisabet Ney Museum was featured in the exhibit.

# COMPREHENSIVE RESTORATION MASTER PLAN

## FUNDERS

- U.S. White House Save Americas Treasures Program
- National Trust for Historic Preservation
- Texas Historical Commission
- Private Foundations
- City of Austin Parks and Recreation Department



# COMPREHENSIVE RESTORATION MASTER PLAN

## COMMUNITY REVIEW

SEPTEMBER – DECEMBER 2009

---

I. Briefings to:

- Austin Parks and Recreation Board
- Austin Historic Landmark Commission
- Elisabet Ney Museum Comprehensive Restoration Campaign Committee
- General Public

II. Display of Master Plan in Elisabet Ney Museum for 3 months. Notices of the display were posted in the Austin media and on the Hyde Park neighborhood listserve.

Notes:

- The Master Plan was presented in draft form to provide the community input into the planning before the Master Plan was finalized.
- Comments from the community were considered within the context of the City of Austin's legal obligations to the Museum's landmark designations and the project funders of the Master Plan.

# COMPREHENSIVE RESTORATION MASTER PLAN

## REQUIRED APPROVALS

---

The Elisabet Ney Museum Comprehensive Restoration Master Plan was approved by U.S. DEPARTMENT OF INTERIOR and TEXAS HISTORICAL COMMISSION for compliance with The Secretary of the Interior's *Standards for the Treatment of Historic Properties* as required by the Elisabet Ney Museum's landmark designations and the project grants to the City of Austin from the Save Americas Treasures program, National Trust for Historic Preservation and Texas Historical Commission.

In 2007, approvals by applicable City of Austin Boards and Commissions and Austin City Council occurred in the design stage of CIP projects.

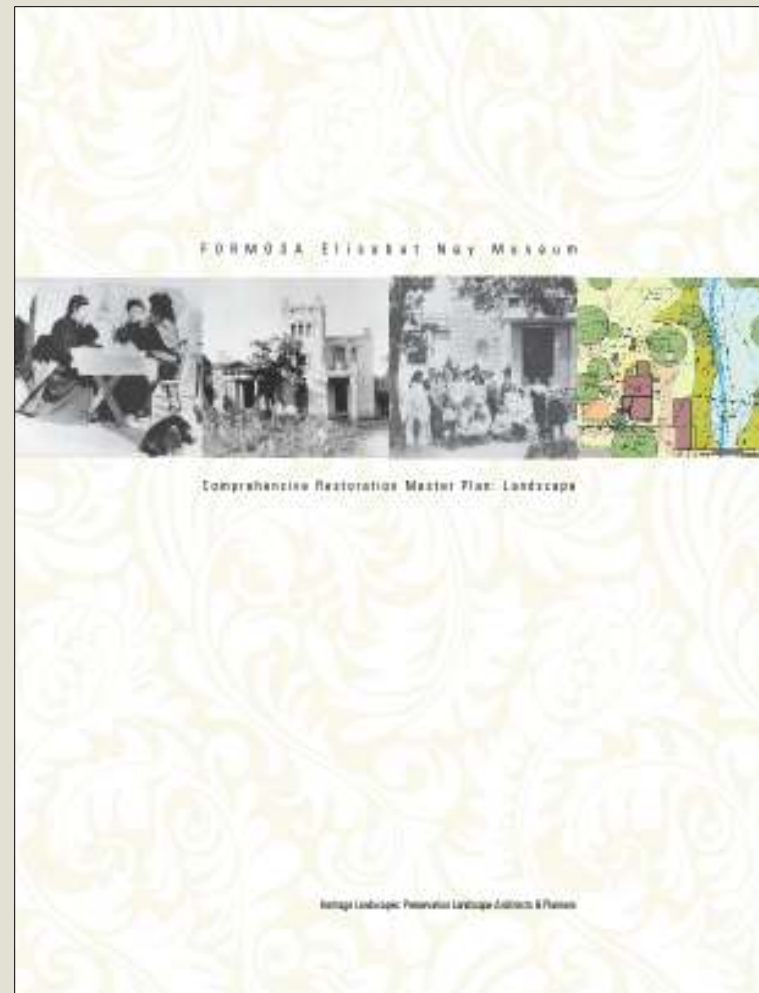


# COMPREHENSIVE RESTORATION MASTER PLAN LANDSCAPE RESTORATION COMPONENT

---

## CONTENTS

- Landscape History
- Existing Conditions
- Analysis of Continuity and Change
- Landscape Restoration Treatment Plan
- Landscape Restoration Phasing
- Opinion of Probable Costs



# COMPREHENSIVE RESTORATION MASTER PLAN

## LANDSCAPE RESTORATION COMPONENT

### DOCUMENTATION

---

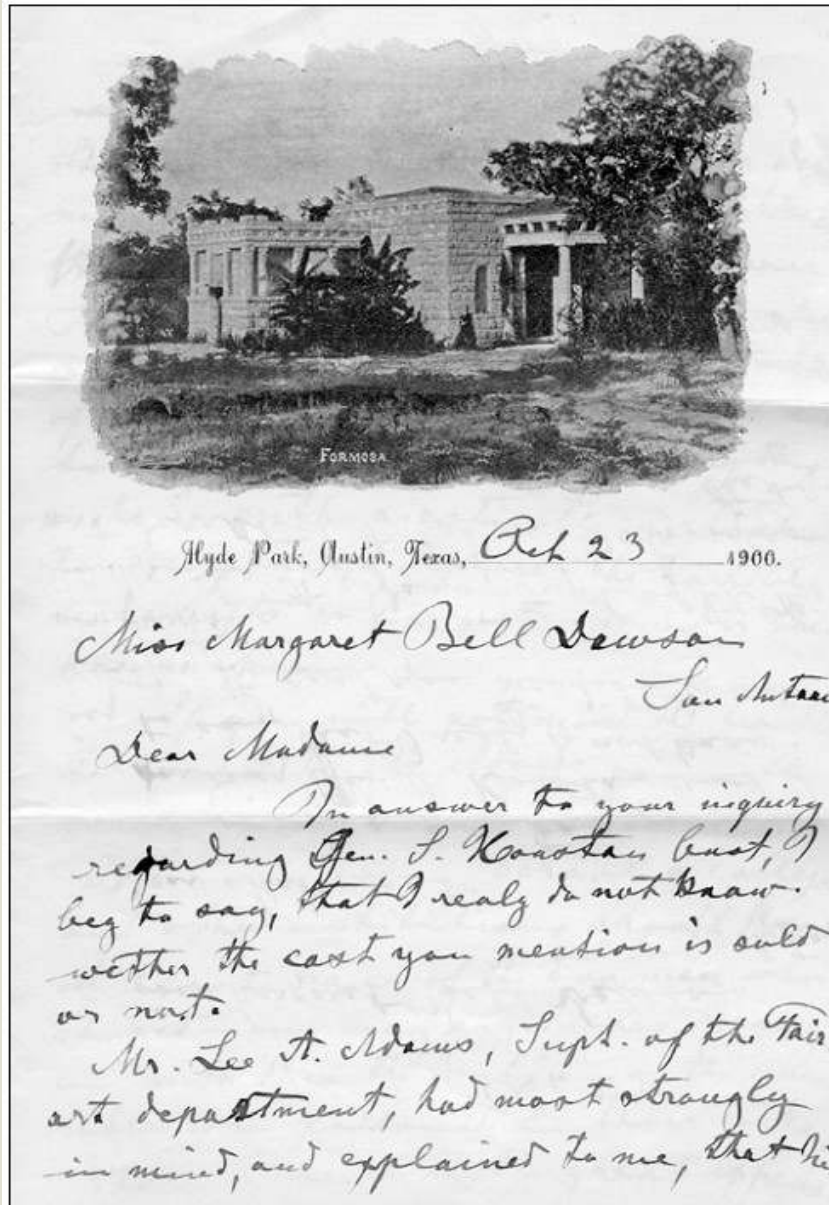
- Elisabet Ney's personal photographs of her studio
- Written descriptions
- Plat maps
- Aerial photographs

Historic photographs were used extensively, particularly in the determination of the locations of the tree and vegetation plantings due to the significant level of documentation of Ney's photographs in the Elisabet Ney Museum archives.



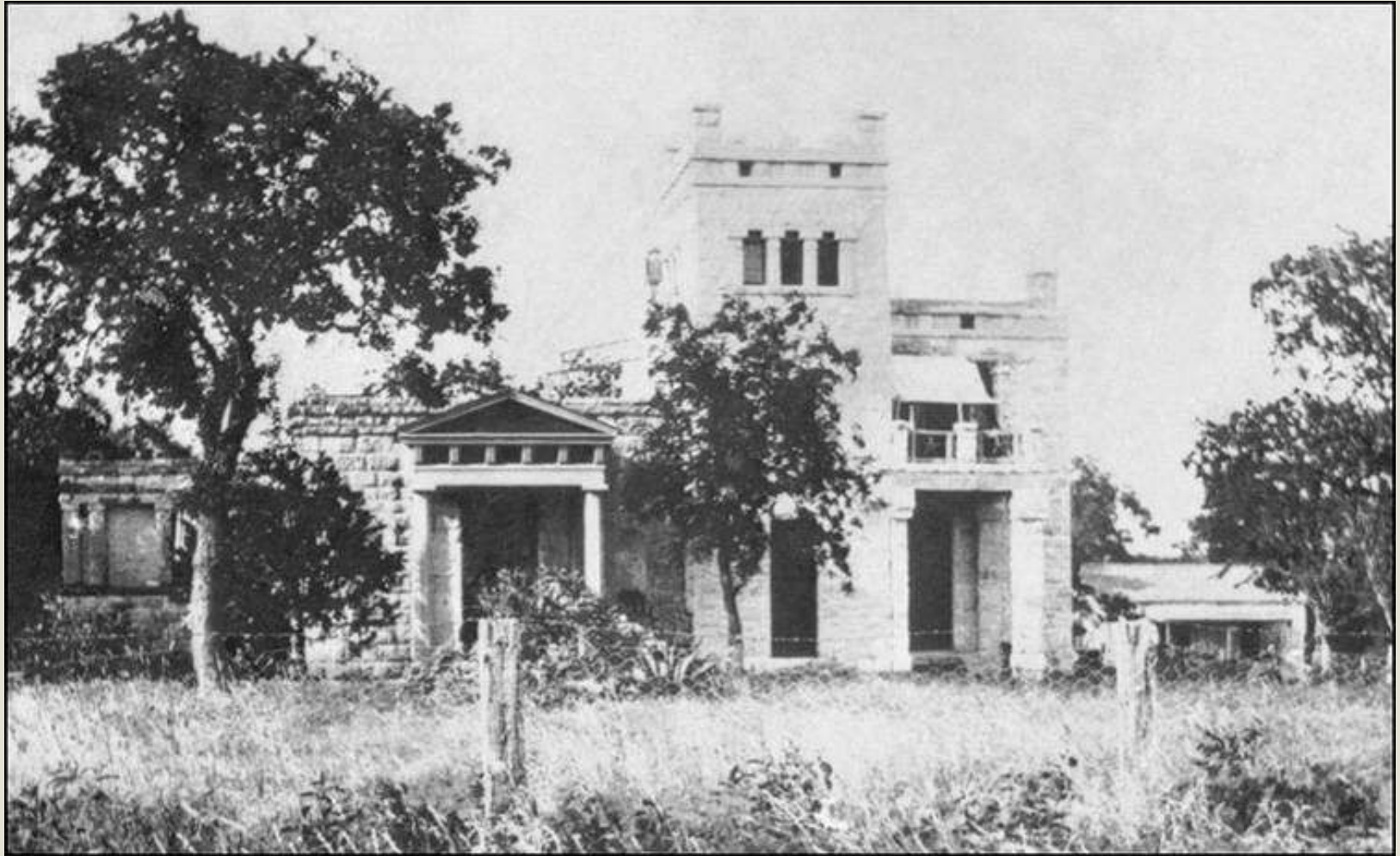
*Formosa.  
Studio of Elisabet Hey, at Hyde Park, Austin, Tex.  
sent in remembrance of the pleasant call 1894.*

1894



Engraving of Formosa as letterhead on Elisabet Ney's stationery





Formosa, circa 1905



Formosa, stable in right corner  
circa 1905



Daughter and granddaughter of Sam Houston with  
Elisabet Ney at Formosa

circa 1895



University of Texas Dean of Women and Hempstead neighbor  
Helen Marr Kirby arriving at Formosa for tea, circa 1895





Jacob Bickler family visiting Elisabet Ney at  
Formosa, circa 1895



Children playing at Formosa,  
circa 1895



Mrs. Clarence Miller and children  
visiting Elisabet Ney at Formosa  
circa 1905





The lake Elisabet Ney created as part of Formosa



Army tent from Colonel Mabry Ney furnished and used as outdoor room.  
Husband, Dr. Edmund Montgomery  
circa 1895



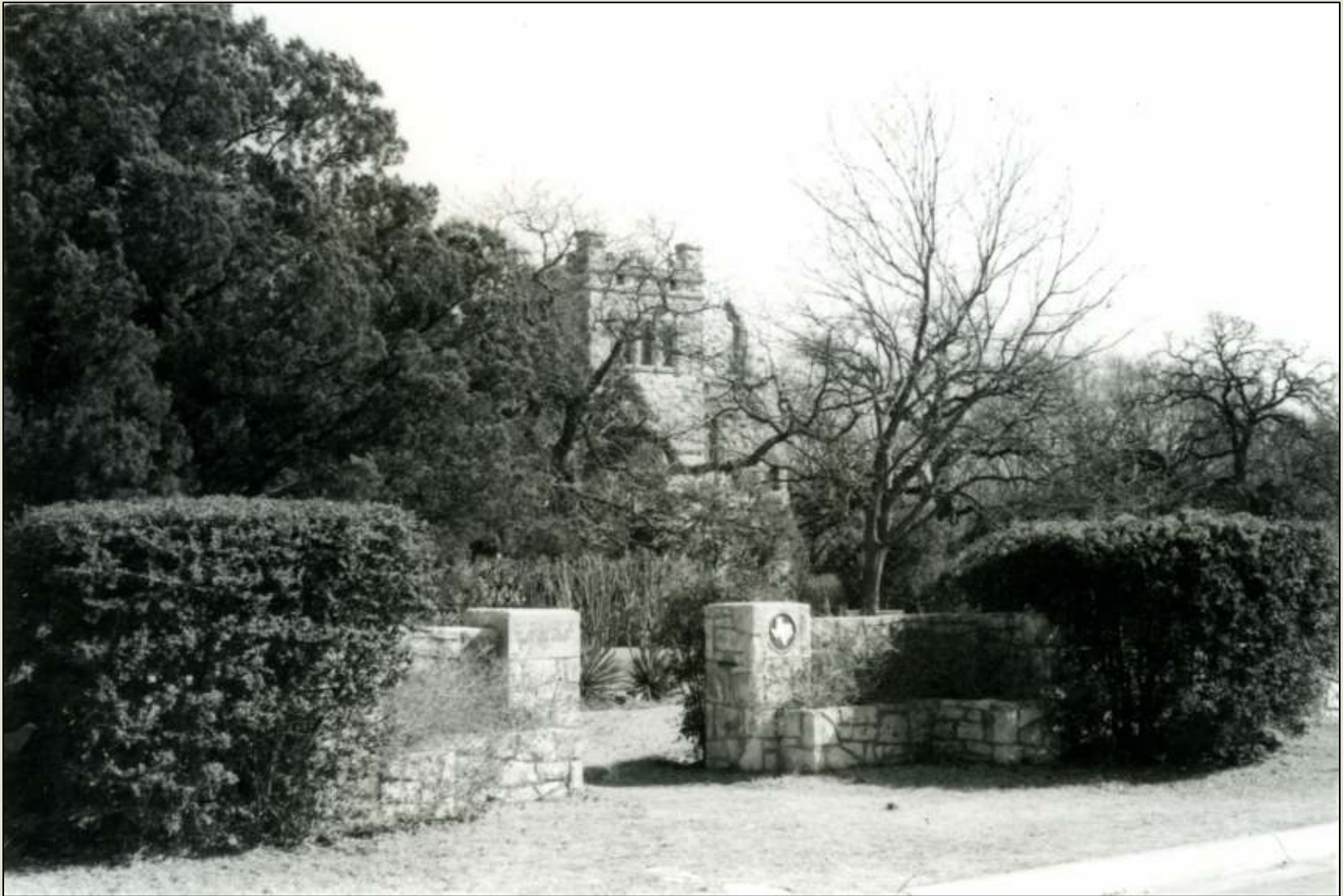


Vegetable garden at Formosa, circa 1905



Elisabet Ney Museum, est. 1911, circa 1915





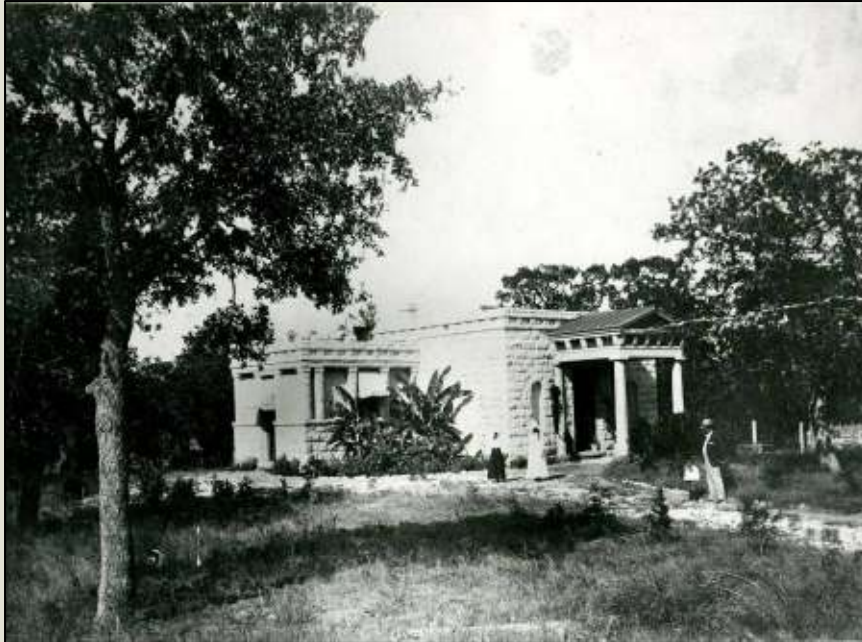
Elisabet Ney Museum, circa 1940, after major redesign of landscape



E  
1  
i  
Elisabet Ney Museum 2007



# LANDSCAPES OF FORMOSA 1894 AND ELISABET NEY MUSEUM 2007

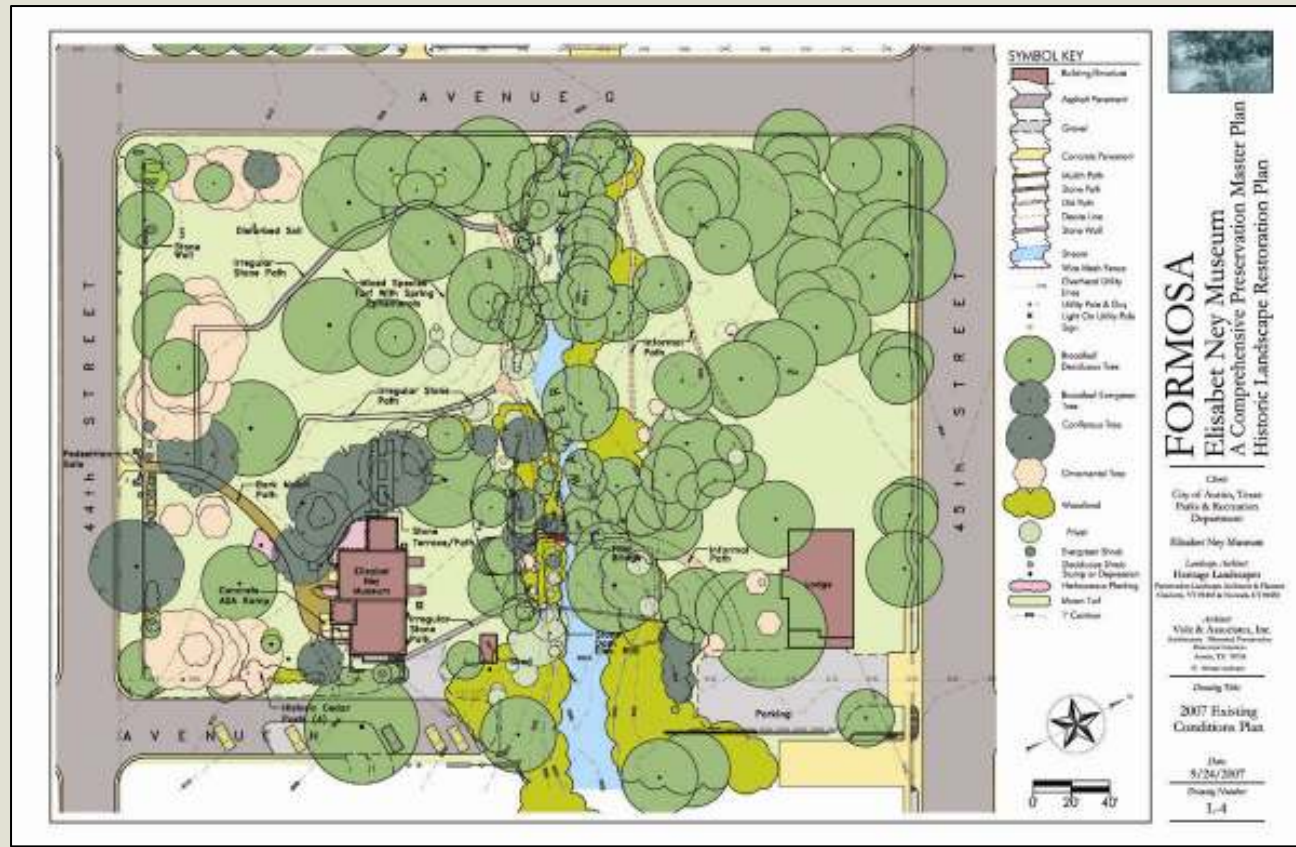


- Native Texas prairie and wildflowers
- 11 Post oaks
- Cedar-lined carriage drive
- Lake
- Tent used as outdoor room
- Vegetable garden
- Perimeter post and wire fencing
- 3 buildings: studio, servant's house & stable



- Mown lawn
- Declining Ney trees. Loss of Ney trees (5 post oaks)
- Loss of carriage drive, lake, fencing, tent and vegetable garden
- Ornamental plantings. Pecan grove
- Stone terrace, pathways and wall
- Invasive vegetation including privet
- 2 buildings: studio & 1930s bungalow

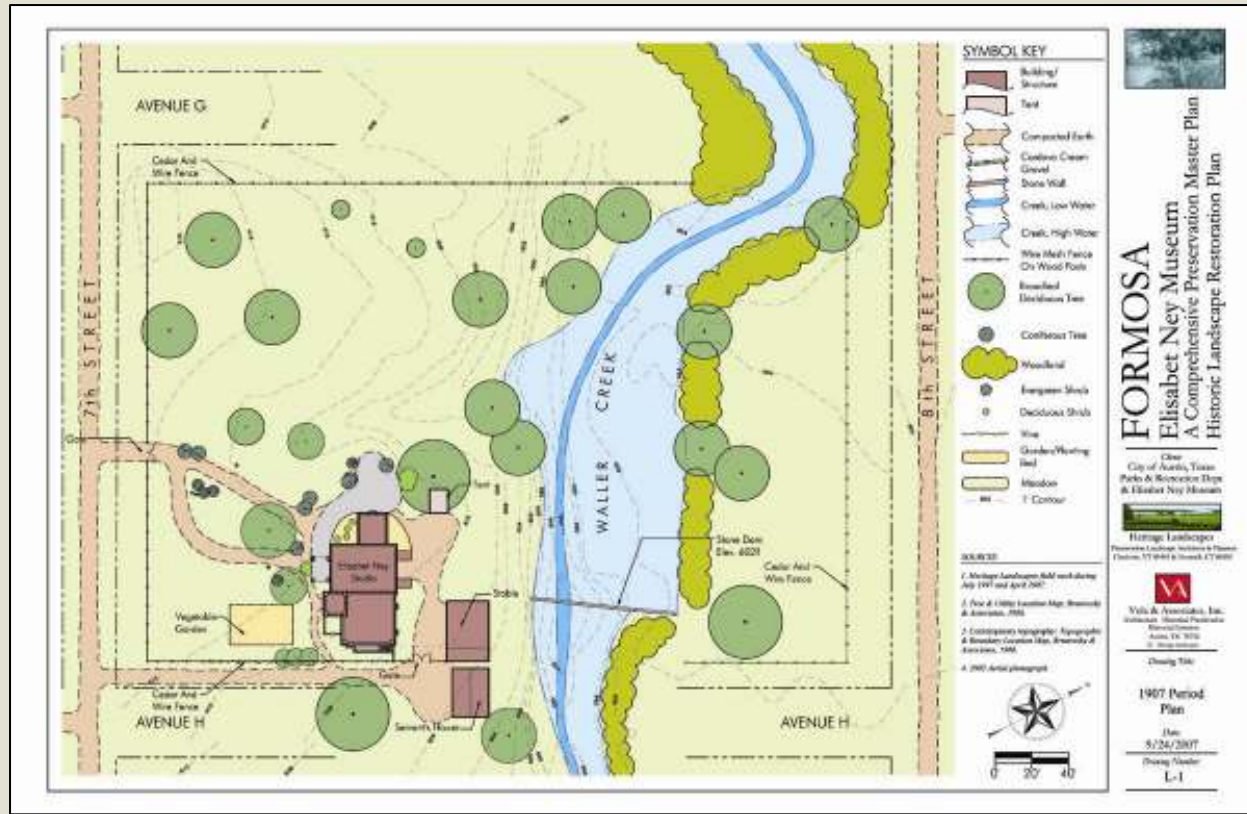
# ELISABET NEY MUSEUM LANDSCAPE - 2007



Landscape Character: 2.5 acres of closed, manicured lawn with non-native plantings and trees, invasive species, ornamental elements

Buildings: 2 buildings – Ney’s former studio and 1930s bungalow moved on to property in 1932

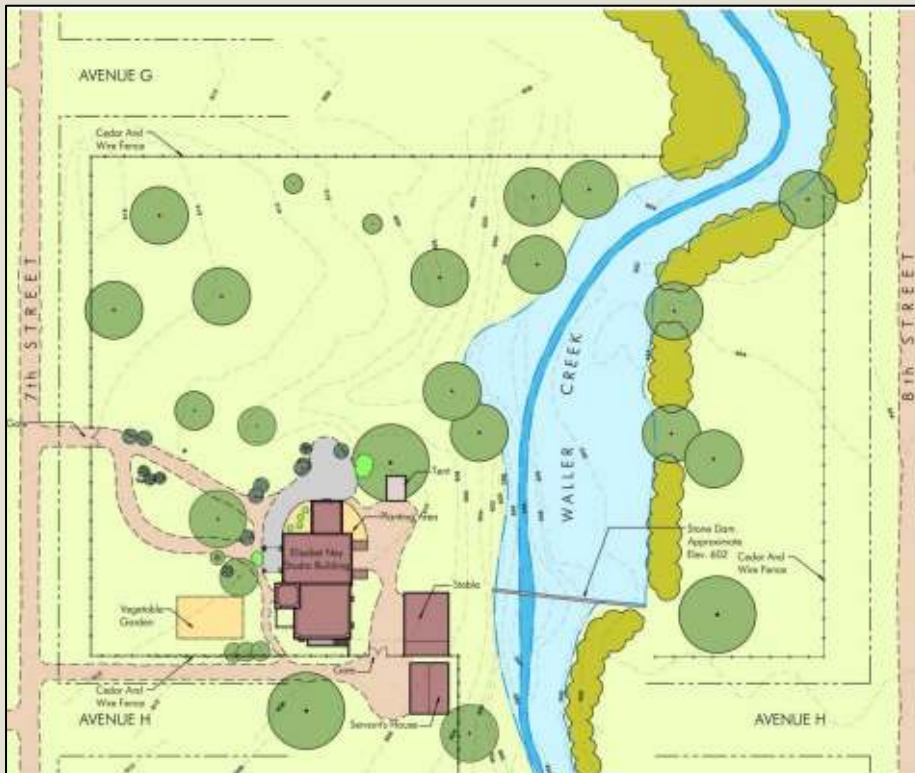
# ELISABET NEY'S FORMOSA - 1907



- Landscape Character: Open, 4.5 acres of native Blackland Prairie, 11 post oaks, lake, cedar- lined carriage drive, vegetable garden and post a wire fence around 2.5 acres - posts extant today
- Buildings: 3 – studio, servant’s house, stable



# 1907 ELISABET NEY'S FORMOSA AND 2007 ELISABET NEY MUSEUM

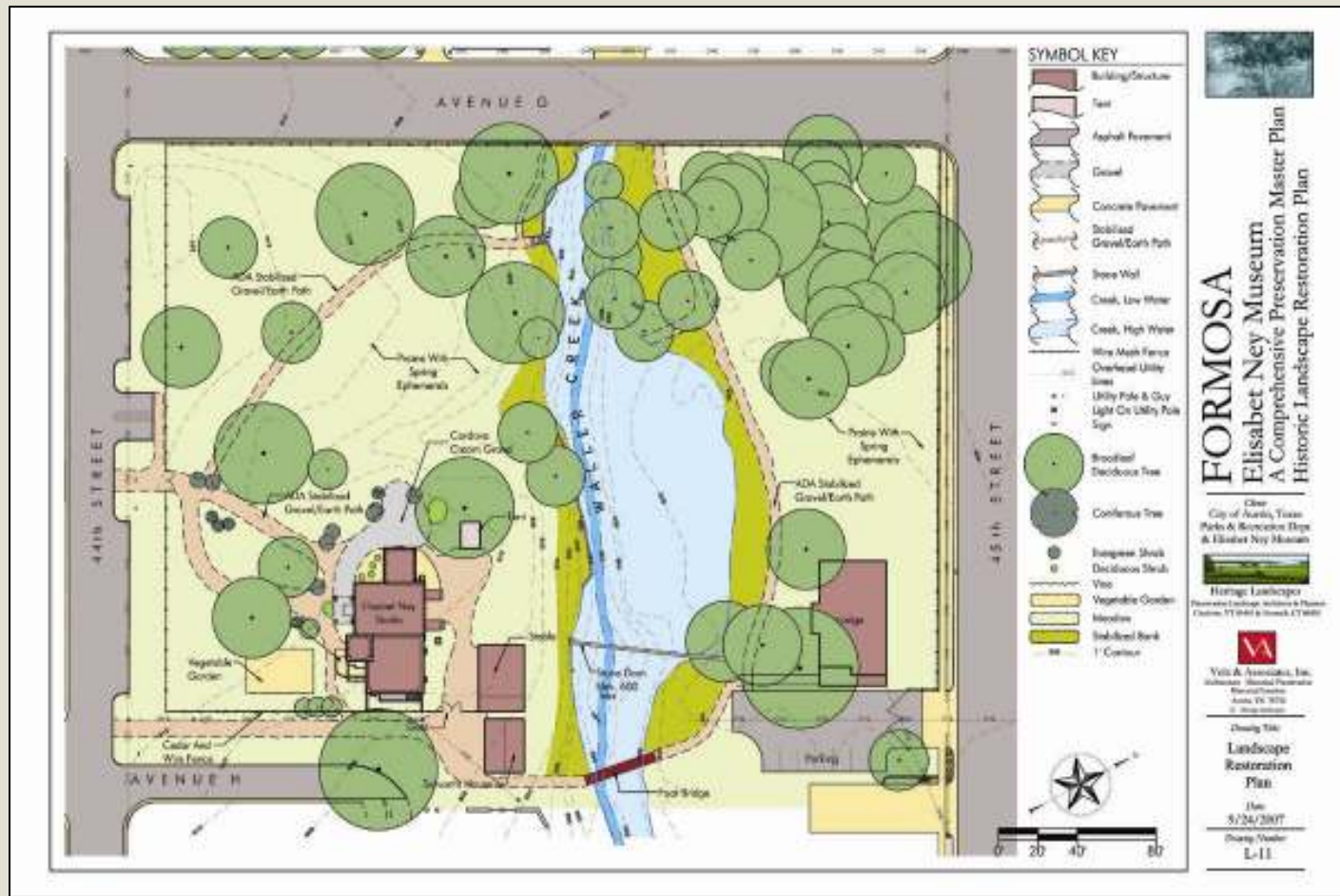


# FORMOSA, 1907



ELISABET NEY MUSEUM, 2007

# LANDSCAPE RESTORATION PLAN FOR FORMOSA



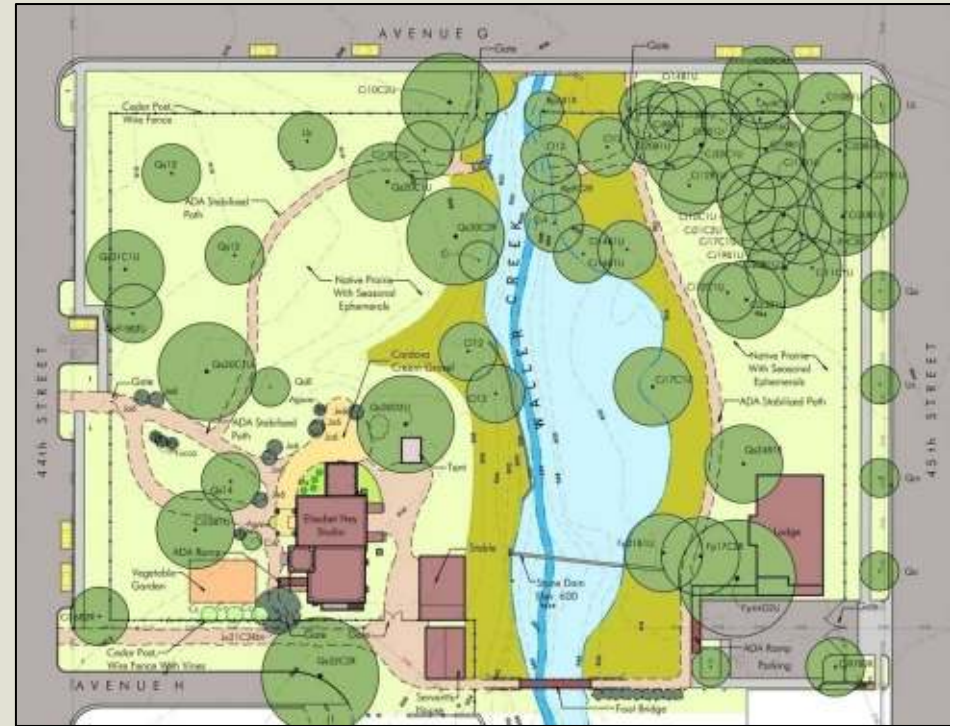
Native prairie and wildflowers, carriage drive, terrace, tent site, lake, vegetable garden, post and wire fencing.  
 Ney's former servant's house and stable



# COMPARISON 2007 ELISABET NEY MUSEUM AND 2007 LANDSCAPE RESTORATION PLAN



Elisabet Ney Museum 2007



2007 Elisabeth Ney Museum  
Landscape Restoration Plan



ELISABET NEY MUSEUM  
BUILDING, ADA ACCESSIBILITY  
AND LANDSCAPE IMPROVEMENTS CIP #7551.002,  
2009-10

---

- CIP #7551.002 comprised work on building AND landscape recommended in Master Plan for priority action.
- See [www.ci.austin.tx.us/parks/projects.htm](http://www.ci.austin.tx.us/parks/projects.htm) for project materials.



# ELISABET NEY MUSEUM BUILDING, ADA ACCESSIBILITY AND LANDSCAPE IMPROVEMENTS CIP #7551.002, 2009-10

---

## PERMITS

- Site Plan Exemption and ADA Compliance – City of Austin
- Antiquities Permit – Texas Historical Commission
- Trade Permits – HVAC, Electric
- TAS Registration – Plumbing

## APPROVALS

- Austin Historic Landmark Commission
- Texas Historical Commission
- U.S. Department of Interior

## ELISABET NEY MUSEUM CIP #7551.002



- Removals of invasive species, dead Ney studio trees, and non-Ney studio trees and plantings from 1930s redesign of Elisabet Ney native landscape
- Restoration of native prairie, post oaks and wildflowers of Formosa
- Restoration of carriage drive, tent site and west terrace of Formosa
- Restoration of Ney's post and wire fencing along east property line

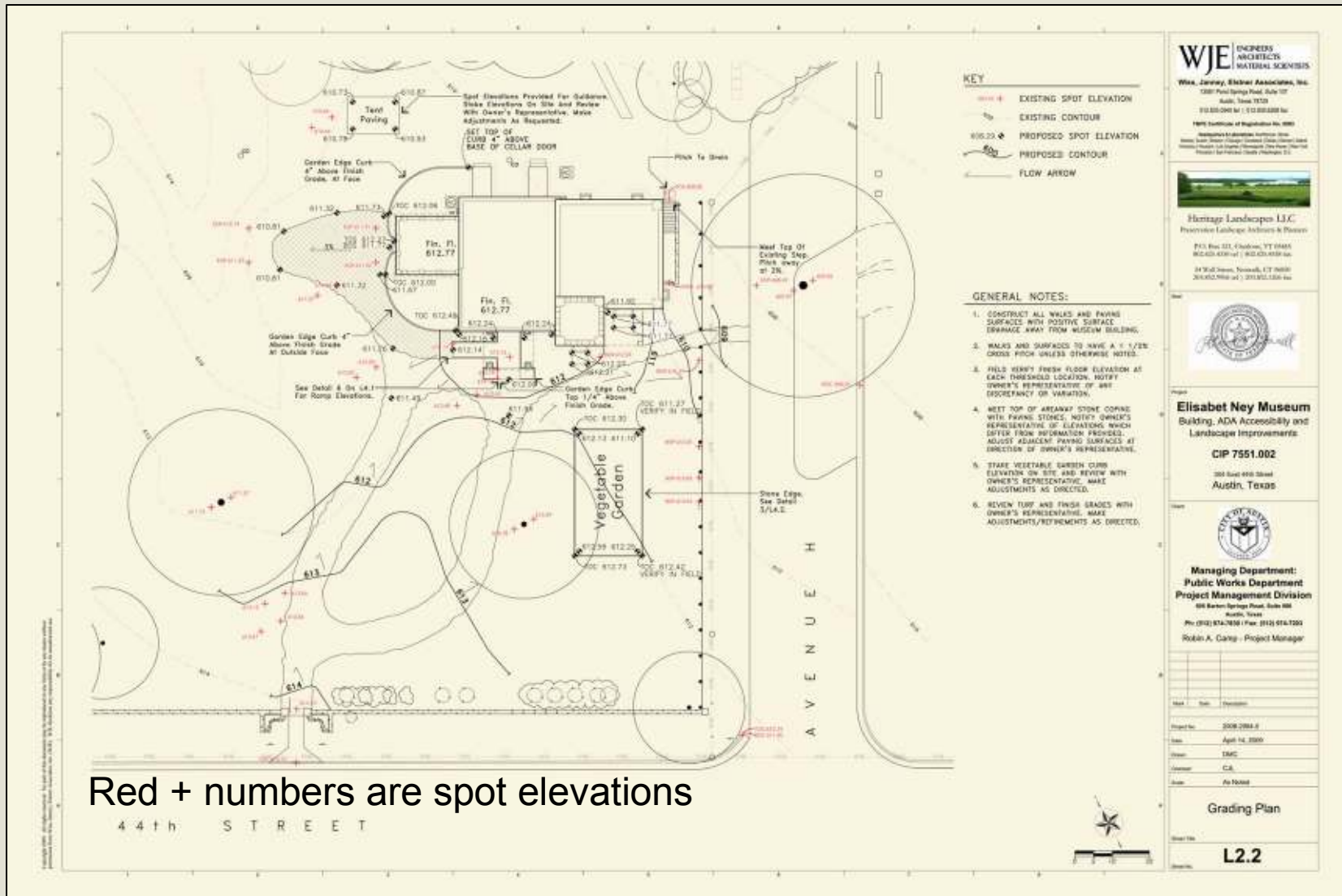
Copyright 2009. All rights reserved. No part of this document may be reproduced in any form or by any means without permission from RSC. However, University students may photocopy this document for personal use only. All other rights reserved. For more information, please contact RSC at 1000 University Ave., Suite 100, Toronto, ON M5G 1R5, Canada. Tel: (416) 591-3537. Fax: (416) 591-3538. Email: [info@rsc.org](mailto:info@rsc.org). Website: [www.rsc.org](http://www.rsc.org).



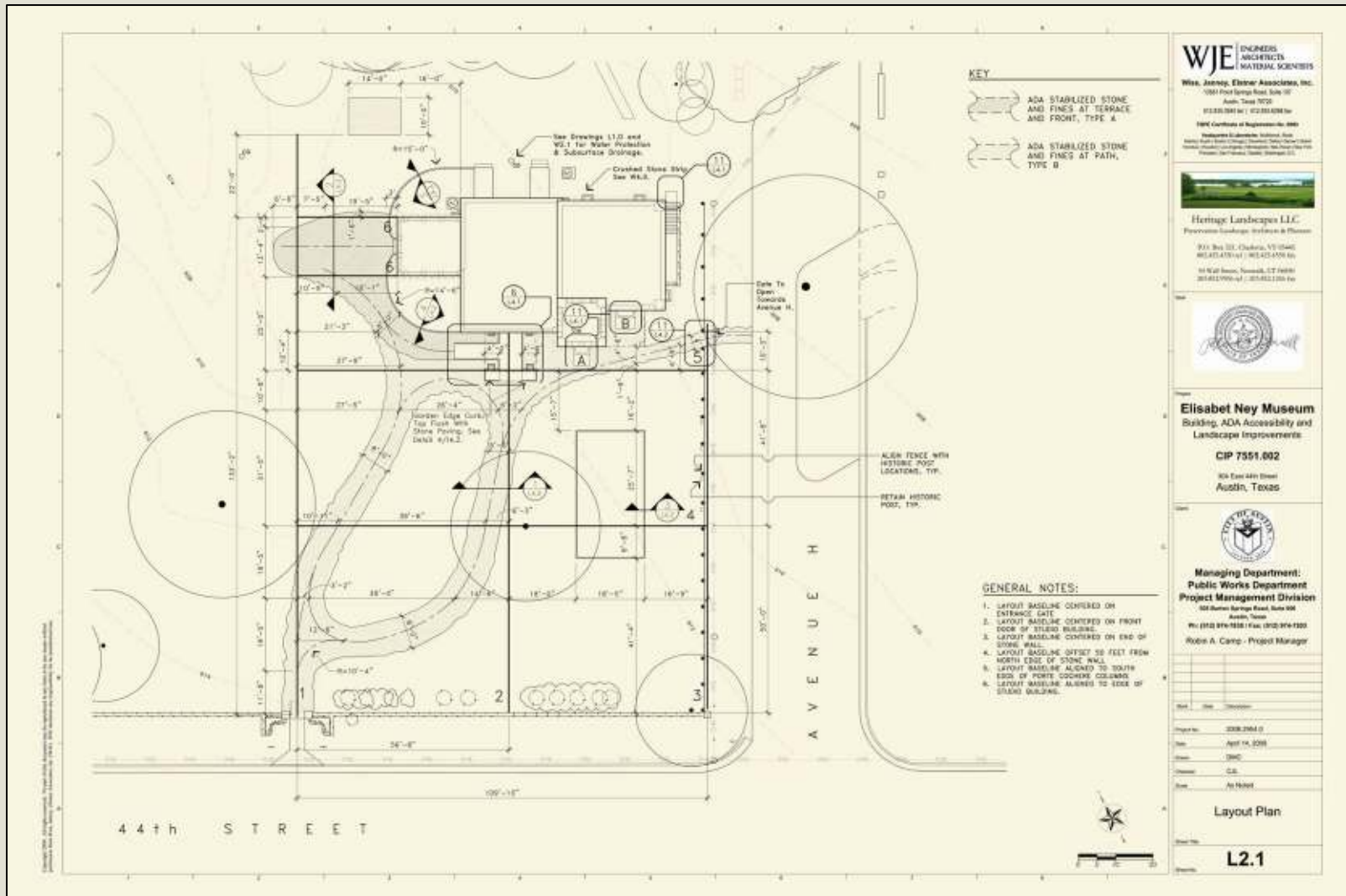
|            |             |
|------------|-------------|
| Speed Pass | <b>L0.0</b> |
|------------|-------------|



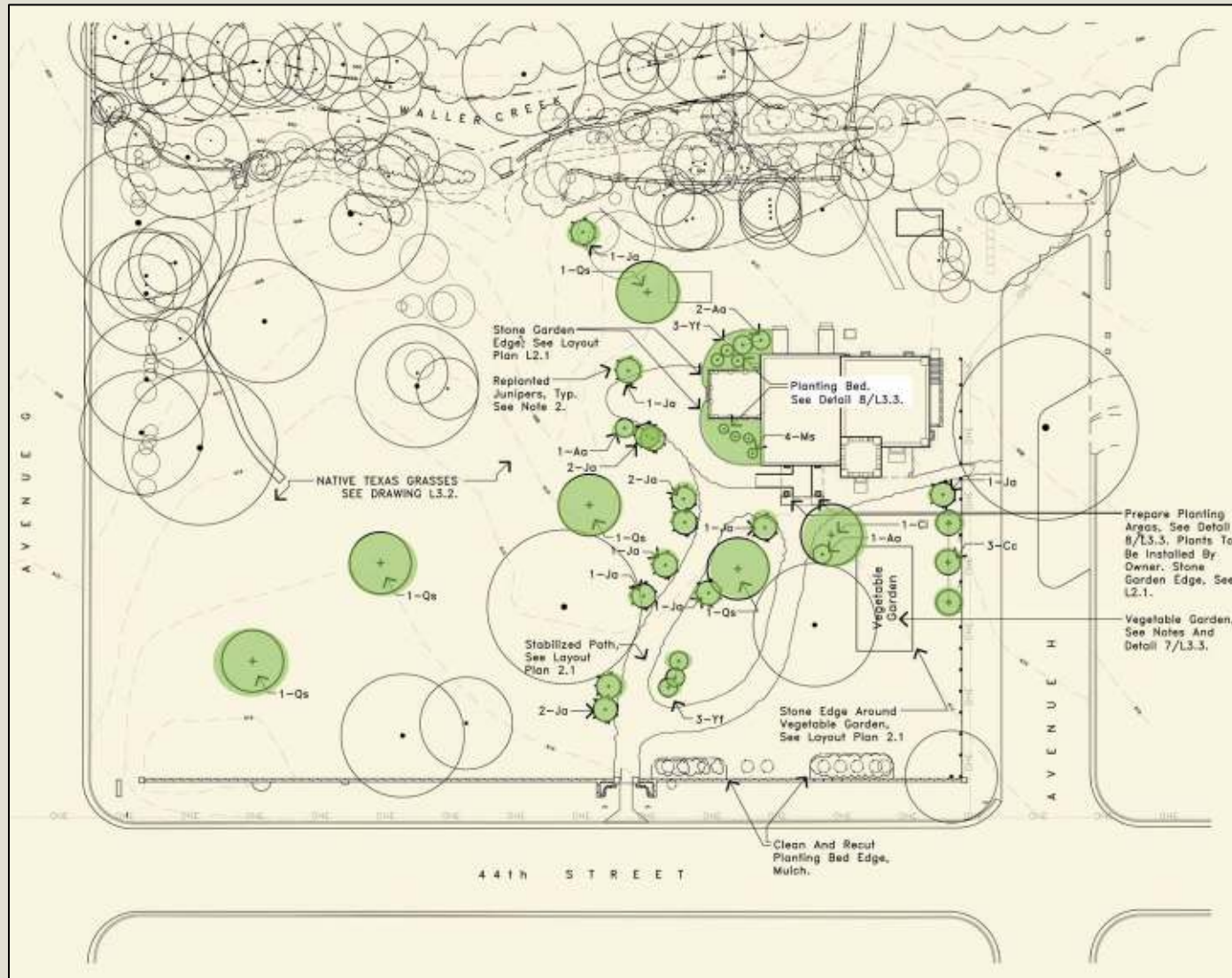
# LANDSCAPE GRADING AND SURFACE DRAINAGE



# LAYOUT OF NEY CARRIAGE DRIVE AND WEST TERRACE



# LANDSCAPE RESTORATION PLANTINGS



## NEW TREES - 22

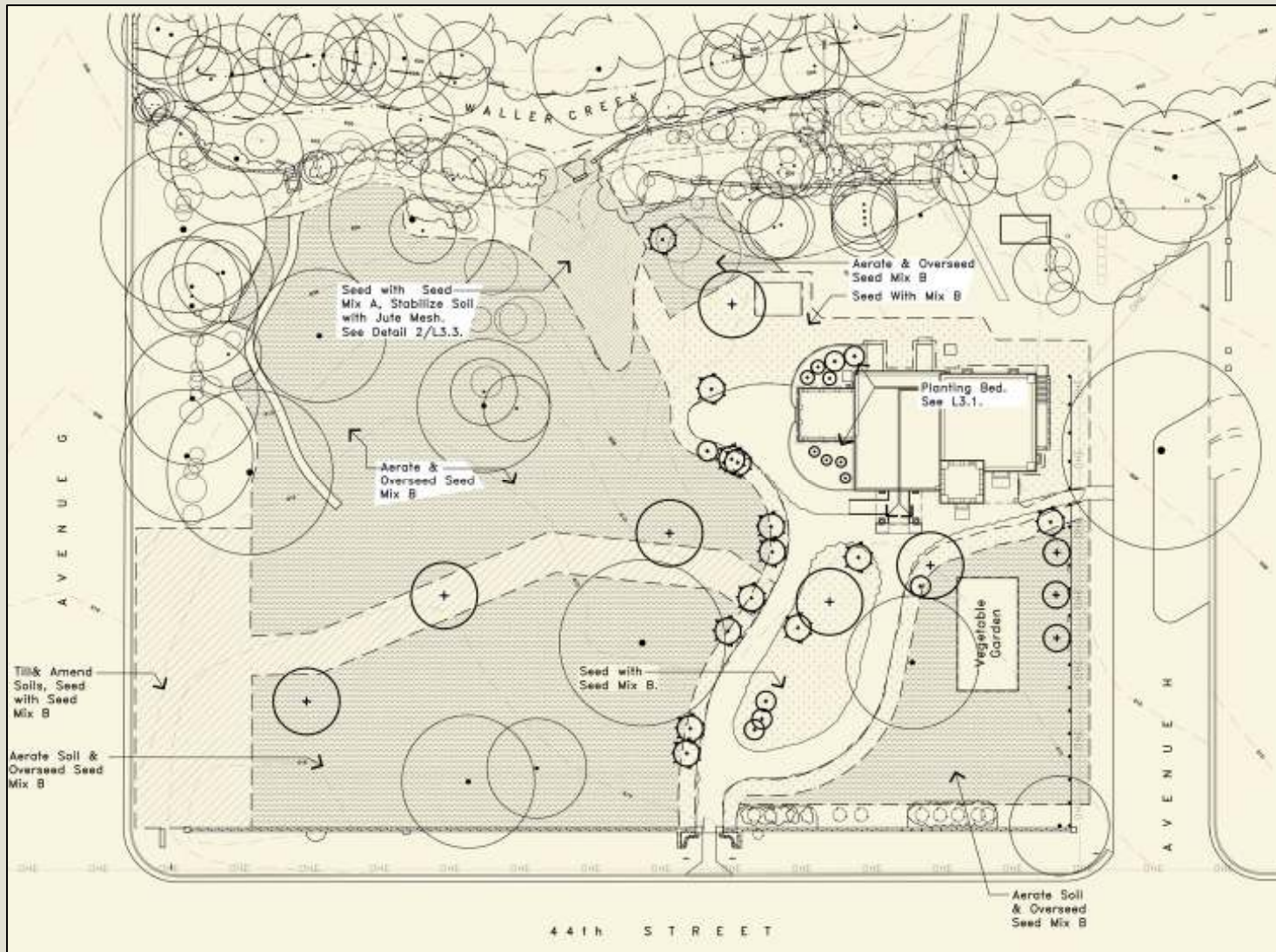
- 5 Qs Post Oak
- 1 Ci Pecan
- 3 Cc Redbud
- 13 Ja Ashe Juniper

## NEW SHRUBS -14

- 4 Aa Agave
- 4 Ms Banana
- 6 Yf Yucca



# PRAIRIE OVERSEEDING RETENTION OF SPRING EPHEMERALS





Example of a completed Blackland Prairie restoration,  
representative of *Formosa* prairie once fully established