

#1

City Council Meeting, September 11, 2010

1. You've been in Office less than a year and you have performed one thing that the people didn't elect you to do: to raise taxes. I don't believe you were elected to spend money, but to spend our taxes for something meaningful for all tax payers.
2. I hope that your service to these tax payers will result in a decrease in taxes, not a 10.8% increase as proposed. If this goes through I will personally start a petition drive for a roll back election. If I may suggest something that will decrease taxes, here are some examples/
 - A. Look at duplication of services, State, County and Cities. Example: Police, fire, and health. Fire Departments and Police Departments do not protect any body or any thing. They just react. Why does city taxes have to pay the County for the Sheriff and Constables. We need to persuade the County Commissioners to get the removal of Constable Positions on the November Ballot. We should require the County to bill the Cities for what services they provide the Cities. If they charge too much the cities may take over completely. We need to get our State Legislatures to look into this matter and pass legislation that would solve this problem. That should also include overlapping State Services as well.
 - B. Take a good look at the property taxes which I gave you. The Travis County property taxes are not too different from Austin's taxes. The City population comprises approximately 80% of the total County population. Does that raise any questions?
 - C. There are many things that need attention on our roadway system. (a) Most of the traffic signals are not properly timed for the traffic load. (b) Many of our streets are not marked for traffic lanes and those that are, need to be re-striped. (c) There should not be any Four-way or three-way stop signs. With a little effort traffic counts could be done to determine the most traffic load and the other gets the stop sign, Example: Teri and Knuckles Crossing during heavy traffic periods. This may need a traffic signal that would operate during these periods. Isn't it strange that it took the Highway Dept 15 years to find that they could have two lanes of traffic exiting Hwy 290 West in Oak Hill, instead of one lane?

Late Backup

Travis County Tax Data

Year	Tax Rate	Appraised Residential Values	Property Taxes	Property Taxes in millions	% increase / decrease	Appraised Commercial Values	Property Taxes	% increase / decrease	Appraised Industrial Values	Property Taxes	% increase / decrease
2000	0.467	27,448,124,229	130,356,798.42	130		11,664,095,684	55,424,461.00		1,101,117,691	5,186,864.83	
2001	0.446	32,433,641,073	147,362,451.47	147	13.0%	13,032,479,327	59,674,470.68	7.7%	1,193,665,795	4,333,096.20	16.5%
2002	0.466	36,404,772,022	173,666,361.32	173	33.2%	13,256,450,986	63,731,566.81	15.0%	1,123,295,625	5,197,305.95	0.2%
2003	0.4918	36,591,802,256	183,462,026.99	183	40.7%	12,231,218,054	61,191,416.76	10.4%	975,941,500	4,779,006.66	7.9%
2004	0.4872	38,332,240,698	191,238,276.92	191	46.7%	11,497,602,002	56,366,459.32	1.7%	916,176,364	4,425,180.56	14.7%
2005	0.4993	40,984,102,740	209,121,059.66	209	60.4%	12,721,748,589	64,197,723.32	15.8%	821,831,147	4,118,983.35	20.6%
2006	0.4499	46,900,445,683	215,484,738.62	215	65.3%	16,172,194,244	73,437,079.92	32.5%	816,100,646	3,675,703.68	29.1%
2007	0.4216	53,187,207,802	229,005,070.35	229	75.7%	18,922,727,344	80,471,275.52	45.2%	842,277,045	3,692,182.09	28.8%
			1,479,696,783.75						514,494,455.33	35,408,323.32	

190,968,124.25
211,370,018.35
242,595,236.08
249,432,450.41
252,029,916.80
277,437,766.33
292,597,522.22
313,168,527.96

Austin Tax Data

Year	Tax Rate	Appraised Residential Values	Property Taxes		% increase / decrease	Appraised Commercial Values	Property Taxes	% increase / decrease	Appraised Industrial Values	Property Taxes	% increase / decrease
2000		21,925,964,707	103,960,450.64	103		10,119,371,217	48,103,078.25		1,040,532,071	4,897,217.46	
2001	0.4597	25,688,447,941	120,142,468.76	120	15.6%	11,234,971,319	53,090,015.05	10.4%	1,130,142,771	4,180,734.92	14.6%
2002	0.4597	28,699,317,079	135,194,356.85	135	30.0%	11,357,586,434	54,093,861.64	12.5%	1,064,933,278	4,864,626.92	0.7%
2003	0.4928	28,763,905,505	144,809,616.11	144	39.3%	10,428,450,347	52,298,686.53	8.7%	930,348,892	4,568,667.82	6.7%
2004	0.4430	30,187,583,307	137,317,261.63	137	32.1%	9,776,081,312	43,604,391.06	9.4%	878,535,855	3,856,969.68	21.2%
2005	0.4430	31,946,179,104	144,936,343.83	144	39.4%	10,832,401,879	48,591,770.95	1.0%	783,826,480	3,486,174.90	28.8%
2006	0.4126	36,138,253,682	152,462,504.90	152	46.7%	13,724,986,198	57,145,416.91	18.8%	777,529,783	3,211,817.65	34.4%
2007	0.4034	40,670,701,441	167,564,334.71	167	61.2%	15,971,417,115	64,996,798.60	35.1%	802,530,956	3,692,182.09	24.6%
			1,106,387,337.43						421,824,018.99	32,758,391.44	

156,960,746.35
177,413,218.73
194,152,845.41
201,676,970.46
184,778,622.37
197,014,289.68
212,819,739.46
236,253,315.40

Total Taxes

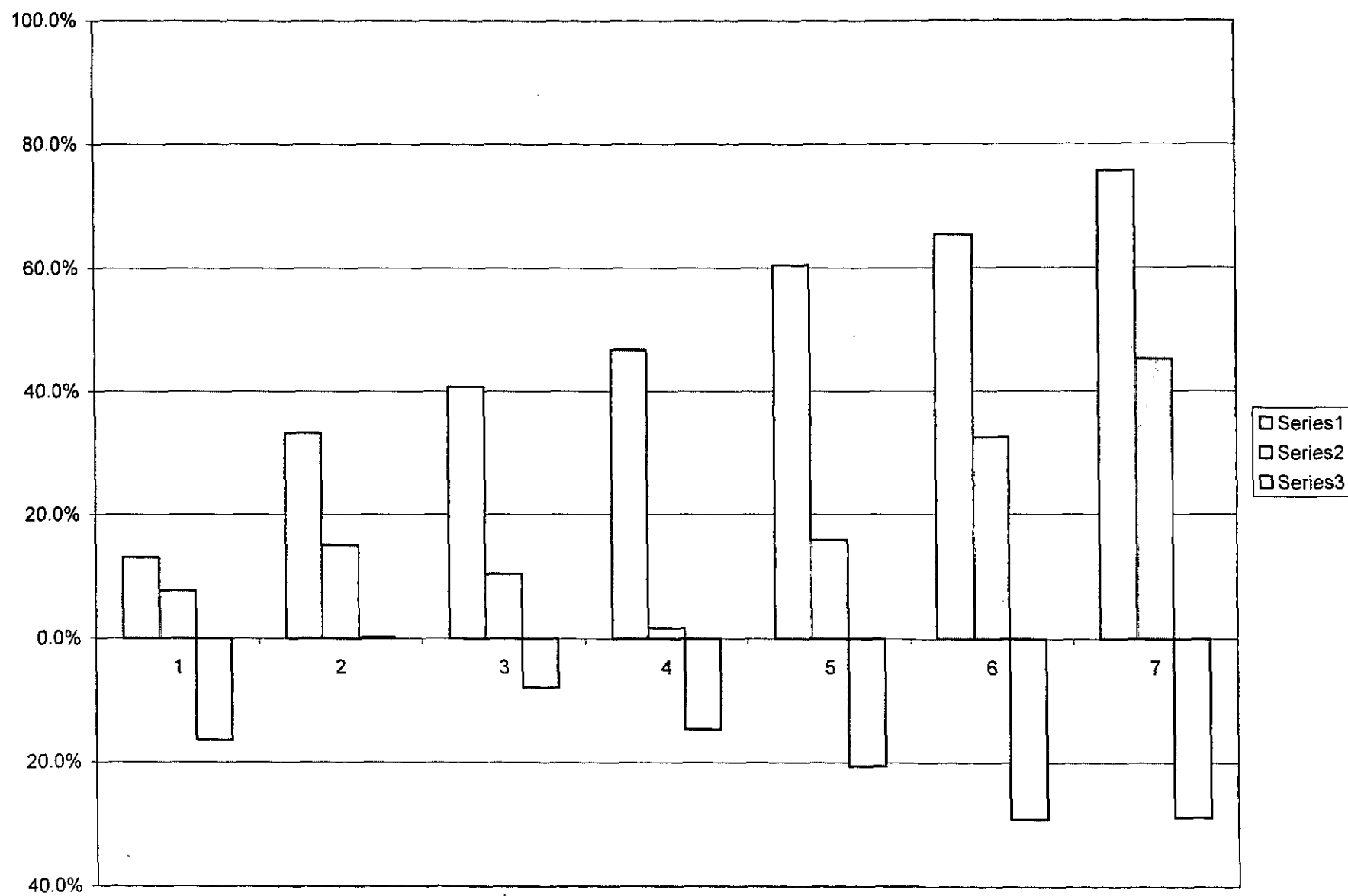
2,586,084,121

936,418,474.32

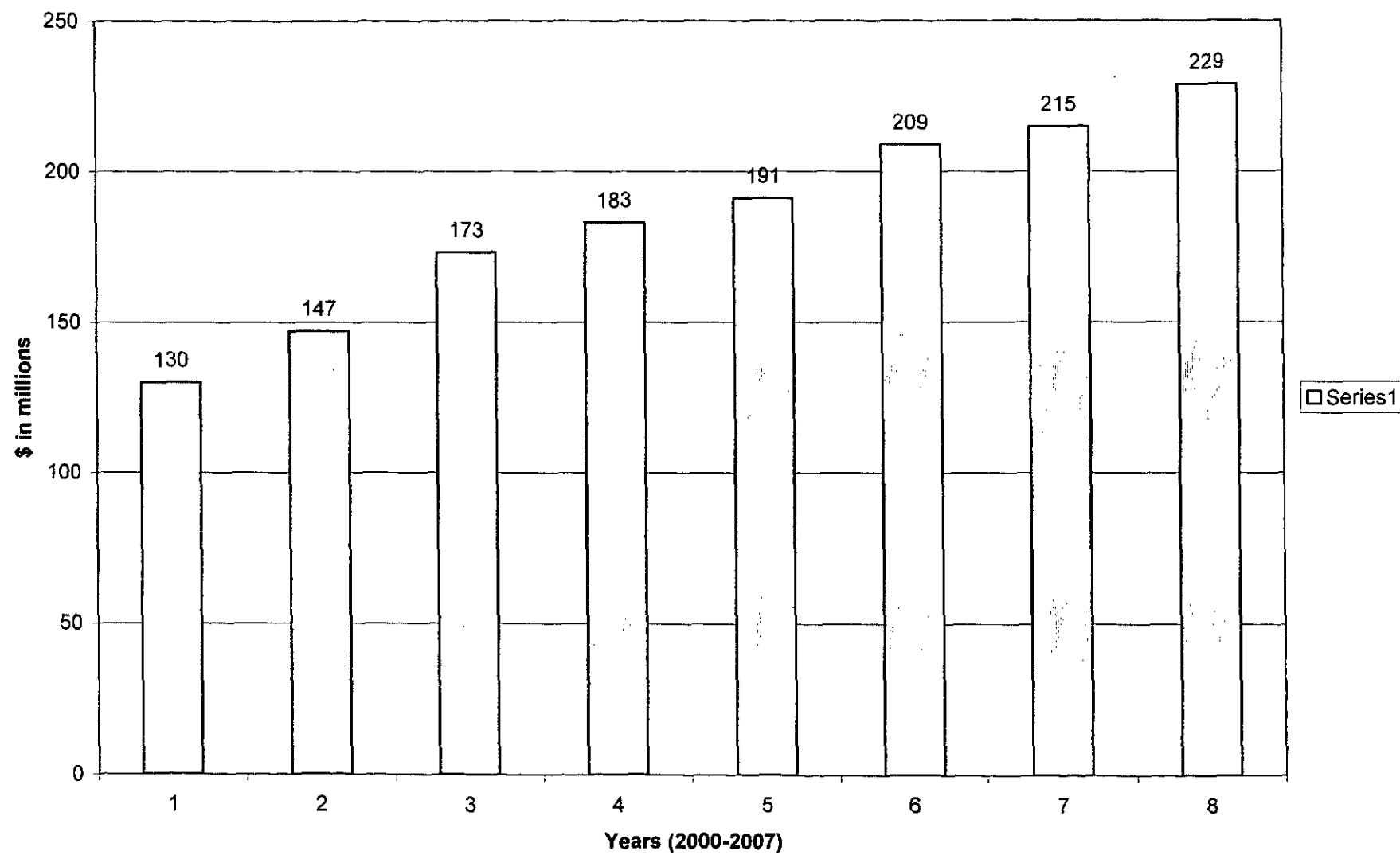
68,166,715

Year
2000
2001
2002
2003
2004
2005
2006
2007

Sales Tax Count Sales Tax City



Trais Co. Residential Property Taxes



	A	B	C	D	E
1					
2	Population information				
3					
4	Year		1990	2000	2009
5					
6	Travis Cty		576,407	812,280	1,026,158
7					
8	City of Austin		465,622	656,562	786,382
9					
10	Metro Area				1,705,075
11					
12	Austin % of Cty Population		80.7	80.7	76.6
13					
14					

Percentage of Population County/ City Ratio

	A	B	C	D	E	F	G	H
1	Taxing Entity	1990	2000	2004	% Growth In 14 years	2004 Property Value	2004 Property Taxes	2004 Sales Taxes
2	Bexar County	1,185,394	1,392,931	1,493,985	26%	\$52,734,890,581	\$141,392,215	
3	San Antonio	935,933	1,144,646	1,236,249	32%	\$46,709,000,000	\$166,500,000	\$317,000,000
4	City % of Population	79%	82%	83%				
5								
6	Comal County	51,832	78,021	91,806	77%	\$5,769,034,374	\$35,630,882	\$5,066,000
7	New Braunfels, Bulverde, Garden Ridge	27,336	42,133	51,518	88%	\$3,352,800,000	\$12,457,000	\$9,800,000
8	City % of Population	53%	54%	56%				
9								
10	Travis County	576,407	812,280	869,868	51%		\$231,024,223	
11	Austin	465,562	656,562	681,804	46%			
12	City % of Population	81%	81%	78%				
13								
14	Hays County	65,614	97,589	119,359	82%			
15	San Marcos, Buda, Kyle, Drip Spgs	33,796	43,999	64,069	90%			
16	City % of Population	52%	45%	54%				
17								
18	Total Population of four counties	1,879,247	2,380,821	2,574,998	37%			

Percentage of Population County City Ratio

Taxing Entity	1990	2000	2004	% Growth
Bexar County	1,185,394	1,392,931	1,493,965	26%
San Antonio	935,933	1,144,646	1,236,249	32%
City % of Population	79%	82%	83%	
Comal County	51,832	78,021	91,806	77%
New Braunfels, Bulverde, Garden Ridge	27,336	42,133	51,518	88%
City % of Population	53%	54%	56%	
Travis County	576,407	812,280	869,868	51%
Austin	465,562	656,562	681,804	46%
City % of Population	81%	81%	78%	
Hays County	65,614	97,589	119,359	82%
San Marcos, Buda, Kyle, Drip Spgs	33,796	43,999	64,069	90%
City % of Population	52%	45%	54%	

To Voting Citizens of this State.

#1. We should get Article V of the Constitution to work for a complete change in what the Congress has been doing for the Congress. (i.e. make the Congress open a Constitutional Convention and propose the following Amendments)

- A. The Congress shall balance the Federal Budget each year except in times of a formal Declaration of War and then only for military needs.
- B. The Federal Debt shall be reduced using 10% of the Federal Income.
- C. The Congress will be paid by the individual States as established by the Governor and approved by the State Legislature. They will office in their home State and communicate with other members of Congress, by commercial means (i.e. telephone, computers, etc.) They will only meet in the Federal Capital once a year, for one (1) month to ratify the Federal budget. They will travel by normal transportation modes (i.e. Trains, Autos, Commercial Airlines and/or other Commercial modes of travel.. No private transportation, except their own, will be used. They will have the same benefits as other Government Staff members/ employees. They are not Kings or Queens!
- D. Give the President **Line Item Veto power**, with over ride by two thirds of both houses

2. They will reduce the Federal Agencies that unnecessarily regulate private Industry and individual States (i.e. Education Agency, Environmental Protection Agency and many others, over a period of ten (10) years, starting one year after ratification by three fourths of the States.

3. The Federal Government will not be engaged in battles without a formal Declaration of War by the U.S. Congress.(Article I, Section 8 of the Constitution.) There are no "Prisoners of War" nor "Treason" without a Declaration of War.

4. The Congress shall declare English as the official language of the USA.

5 The Members of Congress may be elected to serve only two five year terms (One Decade)

John M. Bryant
4611 Mellow Hollow Dr
Austin, TX 78744
Jbryant009@austin.rr.com