

ORDINANCE NO. _____

1 AN ORDINANCE AMENDING ORDINANCE NO. 960613-O FOR THE PROJECT
2 KNOWN AS FOUR POINTS CENTRE PLANNED UNIT DEVELOPMENT
3 PROJECT, TO MODIFY THE LAND USE PLAN, REZONING AND CHANGING
4 THE ZONING MAP FROM PLANNED UNIT DEVELOPMENT (PUD) DISTRICT
5 TO PLANNED UNIT DEVELOPMENT (PUD) DISTRICT FOR THE PROPERTY
6 LOCALLY KNOWN AS 7301 NORTH FM 620 ROAD.

7
8 **BE IT ORDAINED BY THE CITY COUNCIL OF THE CITY OF AUSTIN:**

9
10 **PART 1.** Four Points Centre Planned Unit Development ("Four Points PUD") is comprised
11 of approximately 333 acres of land located at 7200 to 7500 North R.R. 620 Road and more
12 particularly described by metes and bounds in the land use plan incorporated into Ordinance
13 No. 960613-O.

14
15 **PART 2.** Four Points PUD was approved June 13, 1996, under Ordinance No. 960613-O (the
16 "Original Ordinance"), and amended under Ordinance No. 000330-52 and Ordinance No.
17 030424-21.

18
19 **PART 3.** The zoning map established by Section 25-2-191 of the City Code is amended to
20 change the base district from planned unit development (PUD) district to planned unit
21 development (PUD) district on the property described in Zoning Case No. C814-95-0002.09,
22 on file at the Planning and Development Review Department, as follows:

23
24 A 0.147 acre tract of land, more or less, out of Lot 1 Block B, Four Points Centre
25 PUD Lots 1 and 1-A, Block B, Lots 3 and 3-A, Block A Subdivision, the 0.147
26 acre tract of land being more particularly described by metes and bounds in Exhibit
27 "A" incorporated into this ordinance ("Lot 1-B" Property"),

28
29 locally known as 7301 North FM 620 Road, Suite 105, in the City of Austin, Travis County,
30 Texas, and generally identified in the map attached as Exhibit "B".

31
32 **PART 4.** This ordinance, together with the attached Exhibits A, B, and C, constitutes the
33 amended land use plan for the Four Points PUD and amends the Original Ordinance. The Four
34 Points PUD shall conform to the limitations and conditions set forth in the ordinance and the
35 land use plan on record at the Planning and Development Review Department in File No.
36 C814-95-0002.09. If this ordinance and the attached exhibits conflict, the ordinance applies

Exhibit A: Description of Property
Exhibit B: Zoning Map
Exhibit C: Amended Land Use Plan (2 pages)

- A. A liquor sales use is permitted on the Lot 1-B Property.
- B. Note #60 is amended by Note #67 to allow no more than 6,419 square feet of CS-1 zoning on the Lot 1-B Property.

PART 8. This ordinance takes effect on _____, 2010

PASSED AND APPROVED

www.ck12.org

Lee Leffingwell
Mayor

APPROVED: _____ **ATTEST:** _____
Karen M. Kennard Shirley A. Gentry
Acting City Attorney City Clerk



**Professional Land Surveying, Inc.
Surveying and Mapping**

EXHIBIT A

Office: 512-443-1724

Fax: 512-389-0943

3500 McCall Lane
Austin, Texas 78744

0.147 ACRES, ZONING DESCRIPTION

**PORTION OF LOT 1, BLOCK B, FOUR POINTS CENTRE P.U.D. LOTS 1 AND 1-A,
BLOCK B LOTS 3 AND 3-A, BLOCK A**

A DESCRIPTION OF 0.147 ACRES, APPROXIMATELY 6419 SQ. FT., IN THE ALEX DUNLAP SURVEY NO. 805, TRAVIS COUNTY, TEXAS, BEING A PORTION OF LOT 1, BLOCK B, FOUR POINTS CENTRE P.U.D. LOTS 1 AND 1-A, BLOCK B LOTS 3 AND 3-A, BLOCK A, A SUBDIVISION OF RECORD IN VOLUME 100, PAGE 309 OF THE PLAT RECORDS OF TRAVIS COUNTY, TEXAS; SAID 0.147 ACRE TRACT BEING MORE PARTICULARLY DESCRIBED BY METES AND BOUNDS AS FOLLOWS:

COMMENCING, for a point of reference, at a Mag nail with washer found for an angle point in the east line of said Lot 1, same being an angle point in the west line of Lot 2, Block B, Four Points Centre P.U.D., a subdivision of record in Document No. 200200080 of the Official Public Records of Travis County, Texas, from which a Mag nail with washer found in the south right-of-way line of Four Points Drive (90' right-of-way) for the northeast corner of said Lot 1, same being the northwest corner of said Lot 2, bears North 24°19'09" East, a distance of 160.03 feet;

THENCE South 67°54'35" West, crossing said Lot 1, a distance of 286.94 feet to a calculated point for the east corner of the herein described tract of land, and the true **POINT OF BEGINNING** hereof;

THENCE continuing across said Lot 1, the following four (4) courses and distances:

1. South 22°23'00" West, a distance of 72.70 feet to a calculated point;
2. North 67°37'00" West, a distance of 88.30 feet to a calculated point;
3. North 22°23'00" East, a distance of 72.70 feet to a calculated point;
4. South 67°37'00" East, a distance of 88.30 feet to the **POINT OF BEGINNING**, containing 0.147 acres of land, more or less.

Surveyed on the ground May 27, 2010. Bearing Basis: Grid Azimuth for Texas Central Zone, 1983/93 HARN values, based on GPS observations.

 5/28/2010
Eric J. Dannheim
Registered Professional Land Surveyor
State of Texas No. 6075

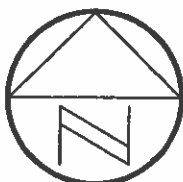


SCANNED

SKETCH TO ACCOMPANY A DESCRIPTION OF 0.147 ACRES, APPROXIMATELY 6419 SQ. FT., IN THE ALEX DUNLAP SURVEY NO. 805, TRAVIS COUNTY, TEXAS, BEING A PORTION OF LOT 1, BLOCK B, FOUR POINTS CENTRE P.U.D. LOTS 1 AND 1-A, BLOCK B LOTS 3 AND 3-A, BLOCK A, A SUBDIVISION OF RECORD IN VOLUME 100, PAGE 309 OF THE PLAT RECORDS OF TRAVIS COUNTY, TEXAS.

LOT 1-A
BLOCK B
FOUR POINTS CENTRE P.U.D. LOTS
1 AND 1-A, BLOCK B LOTS 3
AND 3-A, BLOCK A
(100/309)

FOUR POINTS DRIVE
(90' R.O.W. 10338/198)

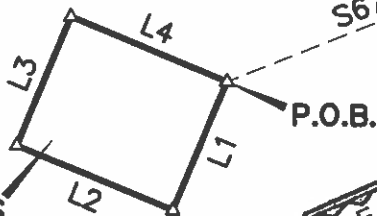


1"=100'

LOT 1
BLOCK B
FOUR POINTS CENTRE P.U.D. LOTS
1 AND 1-A, BLOCK B LOTS 3
AND 3-A, BLOCK A
(100/309)

ALEX DUNLAP
SURVEY NO. 805

0.147 ACRES
APPROX. 6419 SQ. FT.



P.O.C.

LOT 2
BLOCK B
FOUR POINTS
CENTRE P.U.D.
(200200080)



EJD 5/28/2010

LEGEND

- 1/2" REBAR FOUND
- ▲ MAG NAIL WITH WASHER FOUND
- △ CALCULATED POINT

BEARING BASIS: GRID AZIMUTH FOR
TEXAS CENTRAL ZONE, 1983/93 HARN
VALUES, BASED ON GPS OBSERVATIONS

ATTACHMENTS: METES AND BOUNDS
DESCRIPTION 040-070-ZN1

DATE OF SURVEY: 5/27/10
PLOT DATE: 5/28/10
DRAWING NO.: 040-070-ZN1
PROJECT NO.: 040-070
DRAWN BY: EJD
SHEET 1 OF 1




LOT 10
BLOCK B
FOUR POINTS
CENTRE P.U.D.
(90/19)

LINE TABLE		
No.	BEARING	LENGTH
L1	S22°23'00"W	72.70'
L2	N67°37'00"W	88.30'
L3	N22°23'00"E	72.70'
L4	S67°37'00"E	88.30'

Chaparral

SCANNED



-  SUBJECT TRACT
-  PENDING CASE
-  ZONING BOUNDARY

PLANNED UNIT DEVELOPMENT EXHIBIT B

ZONING CASE#: C814-95-0002.09
 LOCATION: 7301 N FM 620 RD STE 105
 SUBJECT AREA: 0.147 ACRES
 GRID: D34
 MANAGER: SHERRI SIRWAITIS



This map has been produced by the Communications Technology Management Dept. on behalf of the Planning Development Review Dept. for the sole purpose of geographic reference. No warranty is made by the City of Austin regarding specific accuracy or completeness.

