



EXHIBIT " _____ "

(VARIABLE WIDTH ACCESS EASEMENT)
SOUTH I-35 WATER/WASTEWATER PROGRAM
CIP # 6937.025

DESCRIPTION FOR PARCEL 4558.126 AE-1

LEGAL DESCRIPTION OF A 2.092-ACRE TRACT OF LAND, EQUIVALENT TO 91,145 SQUARE FEET OF LAND IN THE SANTIAGO DEL VALLE GRANT, ABSTRACT 24, OUT OF AND A PART OF A CALLED 166.598-ACRE TRACT OR PARCEL OF LAND CONVEYED TO THE FOLLOWING: CURTIS B. FIGER AND SPOUSE, BILLIE JO FIGER BY WARRANTY DEED, DATED DECEMBER 18, 1992, AND RECORDED IN VOLUME 11836, PAGE 1356; MICHAEL G. FIGER BY GIFT WARRANTY DEED, DATED DECEMBER 22, 1993, AND RECORDED IN VOLUME 12088, PAGE 844; DONALD K. FIGER BY GIFT WARRANTY DEED, DATED DECEMBER 22, 1993, AND RECORDED IN VOLUME 12088, PAGE 856; BETSY A. LAMBETH BY GIFT WARRANTY DEED, DATED DECEMBER 22, 1993, RECORDED IN VOLUME 12088, PAGE 862; MICHAEL G. FIGER BY GIFT WARRANTY DEED, DATED JANUARY 5, 1994, RECORDED IN VOLUME 12097, PAGE 160; DONALD K. FIGER BY GIFT WARRANTY DEED, DATED JANUARY 5, 1994, RECORDED IN VOLUME 12097, PAGE 170; BETSY A. LAMBETH BY GIFT WARRANTY DEED, DATED JANUARY 5, 1994, RECORDED IN VOLUME 12097, PAGE 175; DAVID A. BREWER AND BILLIE J. FIGER, CO-TRUSTEES BY WARRANTY DEED, DATED APRIL 6, 1994, RECORDED IN VOLUME 12159, PAGE 85, ALL OF THE REAL PROPERTY RECORDS OF TRAVIS COUNTY, TEXAS; INCLUDING KEITH H. HARMON AND BONNIE HARMON, TRUSTEES OF THE HARMON FAMILY TRUST ESTABLISHED BY TRUST AGREEMENT BY GENERAL WARRANTY DEED, EXECUTED NOVEMBER 3, 1999, RECORDED IN DOCUMENT NO. 2000178631 OF THE OFFICIAL PUBLIC RECORDS OF TRAVIS COUNTY, TEXAS; SAID 2.092-ACRE PARCEL OF LAND BEING MORE PARTICULARLY DESCRIBED BY METES AND BOUNDS, AS FOLLOWS, AND AS SHOWN ON THE ATTACHED SKETCH:

BEGINNING FOR REFERENCE at a 1/2-inch iron rod found monumenting the northeast corner of the above referenced Figer 166.598-acre tract, same being on the southerly right-of-way line of Brandt Lane (right-of-way width varies), same also being the northwest corner of a called 27.110-acre tract conveyed to Jesus Turullos and recorded in Volume 8361, Page 293 of the Deed Records Travis County, Texas; **Thence**, with the east line of said Figer 166.598-acre tract and the west line of said Turullos 27.110-acre tract, S28°40'21"E, a distance of 239.59 feet to a calculated point at the most northerly corner of a Travis County roadway easement designated as Slaughter Lane (120-foot right-of-way) recorded in Volume 11818, Page 224 of the Real Property Records of Travis County, Texas; **Thence**, with the westerly right-of-way easement line of said Slaughter Lane, S25°07'34" E, a distance of 760.84 feet to calculated point of tangency of a circular curve to the left, and with said circular curve to the left a chord bearing of S29°30'45"E, a distance of 276.81 feet to a 60D nail set having Texas State Plane Grid



Coordinate (Central Zone-4203, NAD83(CORS), U.S. Survey Feet,) values of N=10,029,551.47, E=3,105,289.07, for the northeast corner and **POINT OF BEGINNING** of this easement;

THENCE, continuing with said westerly right-of-way easement line of Slaughter Lane, with said circular curve to the left, an arc length of **30.28 feet**, having a radius distance of **1,810.00 feet**, a delta angle of **00°57'31"**, a chord which bears **S34°22'38"E**, a distance of **30.28 feet** to a 60d nail set at a point of non-tangency of a circular curve to the right, for the southeast corner of this easement, whose radius point bears **N28°30'24"W**, a distance of 70.00 feet, from which a 1/2-inch iron rod found at the southeast corner of said Figer 166.598-acre tract, same being an angle point in the northerly line of Lot 1, Block A, 151 Acre Tract Subdivision, a subdivision recorded in Book 101, Pages 245-247 of the Plat Records of Travis County, Texas, bears a chord bearing of **S54°32'22"E** a distance of 1,219.27 feet, **S74°12'33"E** a distance of 339.13 feet, **S26°15'28"E** a distance of 332.02 feet, and **S25°48'02"E** a distance of 18.67 feet;

THENCE, through said Figer 166.598-acre tract, the following fifty-three (53) courses and distances:

- 1) With said circular curve to the right, an arc length of **108.63 feet**, having a radius distance of **70.00 feet**, a delta angle of **88°54'58"**, a chord which bears **N74°02'55"W**, a distance of **98.05 feet** to a 60d nail set at a point of tangency of this easement;
- 2) **N29°35'26"W**, a distance of **211.37 feet** to a 60d nail set at a point of tangency of a circular curve to the left of this easement;
- 3) With said circular curve to the left, an arc length of **95.59 feet**, having a radius distance of **70.00 feet**, a delta angle of **78°14'29"**, a chord which bears **N68°42'40"W**, a distance of **88.33 feet** to a 60d nail set at a point of tangency of this easement;
- 4) **S72°10'05"W**, a distance of **63.20 feet** to a 60d nail set, for an angle point of this easement;
- 5) **S65°14'13"W**, a distance of **34.52 feet** to a 60d nail set, for an angle point of this easement;
- 6) **S51°16'05"W**, a distance of **36.12 feet** to a 60d nail set, for an angle point of this easement;
- 7) **S61°21'57"W**, a distance of **29.65 feet** to a 60d nail set at a point of tangency of a circular curve to the right of this easement;
- 8) With said circular curve to the right, an arc length of **131.70 feet**, having a radius distance of **215.00 feet**, a delta angle of **35°05'47"**, a chord which bears **S78°54'51"W**, a distance of **129.65 feet** to a 60d nail set at a point of tangency of this easement;



- 9) **N83°32'16"W**, a distance of **286.87 feet** to a 60d nail set at a point of tangency of a circular curve to the left;
- 10) With said circular curve to the left, an arc length of **69.28 feet**, having a radius distance of **205.00 feet**, a delta angle of **19°21'48"**, a chord which bears **S86°46'50"W**, a distance of **68.95 feet** to a 60d nail set at a point of tangency of this easement;
- 11) **S77°05'56"W**, a distance of **184.19 feet** to a 60d nail set, for an angle point of this easement;
- 12) **S36°26'38"W**, a distance of **293.64 feet** to a 60d nail set, for an angle point of this easement;
- 13) **S04°18'21"E**, a distance of **311.83 feet** to a 60d nail set, for an outside corner of this easement;
- 14) **N29°40'59"W**, a distance of **42.19 feet** to a 60d nail set, for an inside corner of this easement;
- 15) **S60°19'01"W**, a distance of **13.19 feet** to a 60d nail set, for an outside corner of this easement;
- 16) **N04°18'21"W**, a distance of **179.26 feet** to a 60d nail set at a point of tangency of a circular curve to the left of this easement;
- 17) With said circular curve to the left, an arc length of **47.70**, having a radius distance of **70.00 feet**, a delta angle of **39°02'28"**, a chord which bears **N23°49'35"W**, a distance of **46.78 feet** to a 60d nail set at a point of tangency of this easement;
- 18) **N43°20'49"W**, a distance of **4.67 feet** to a 60d nail set at a point of tangency of a circular curve to the left of this easement;
- 19) With said circular curve to the left, an arc length of **68.22**, having a radius distance of **45.00 feet**, a delta angle of **86°51'24"**, a chord which bears **N86°46'31"W**, a distance of **61.87 feet** to a 60d nail set at a point of tangency of this easement;
- 20) **S49°47'47"W**, a distance of **108.84 feet** to a 60d nail set at an angle point of this easement;
- 21) **S02°13'55"W**, a distance of **197.47 feet** to a 60d nail set at an angle point of this easement;
- 22) **S16°53'07"W**, a distance of **49.40 feet** to a 60d nail set at an angle point of this easement;



- 23) **S16°27'57"E**, a distance of **80.35 feet** to a 60d nail set at a point tangency of a circular curve to the right of this easement;
- 24) With said circular curve to the right, an arc length of **81.01**, having a radius distance of **145.00 feet**, a delta angle of **32°00'32"**, a chord which bears **S00°27'41"E**, a distance of **79.96 feet** to a 60d nail set at a point of tangency of this easement;
- 25) **S15°32'35"W**, a distance of **99.00 feet** to a 60d nail set at a point tangency of a circular curve to the right of this easement;
- 26) With said circular curve to the right, an arc length of **127.44 feet**, having a radius distance of **115.00 feet**, a delta angle of **63°29'37"**, a chord which bears **S47°17'23"W**, a distance of **121.02 feet** to a 60d nail set at a point of tangency of this easement;
- 27) **S79°02'11"W**, a distance of **122.13 feet** to a 60d nail set at a point of tangency of a circular curve to the right of this easement;
- 28) With said circular curve to the right, an arc length of **118.19 feet**, having a radius distance of **95.00 feet**, a delta angle of **71°16'50"**, a chord which bears **N65°19'24"W**, a distance of **110.71 feet** to a 60d nail set at a point of tangency of this easement;
- 29) **N29°40'59"W**, a distance of **30.63 feet** to a 60d nail set for the southwest corner of this easement;
- 30) **N60°19'01"E**, a distance of **30.00 feet** to a 60d nail set for the northwest corner of this easement;
- 31) **S29°40'59"E**, a distance of **30.63 feet** to a 60d nail set at a point of tangency of a circular curve to the left of this easement;
- 32) With said circular curve to the left, an arc length of **80.87 feet**, having a radius distance of **65.00 feet**, a delta angle of **71°16'50"**, a chord which bears **S65°19'24"E**, a distance of **75.75 feet** to a 60d nail set at a point of tangency of this easement;
- 33) **N79°02'11"E**, a distance of **122.13 feet** to a 60d nail set at a point of tangency of a circular curve to the left of this easement;
- 34) With said circular curve to the left, an arc length of **94.19 feet**, having a radius distance of **85.00 feet**, a delta angle of **63°29'37"**, a chord which bears **N47°17'23"E**, a distance of **89.45 feet** to a 60d nail set at a point of tangency of this easement;
- 35) **N15°32'35"E**, a distance of **99.00 feet** to a 60d nail set at a point of tangency of a circular curve to the left of this easement;



- 36) With said circular curve to the left, an arc length of **64.25 feet**, having a radius distance of **115.00 feet**, a delta angle of **32°00'32"**, a chord which bears **N00°27'41"W**, a distance of **63.41 feet** to a 60d nail set at a point of tangency of this easement;
- 37) **N16°27'57"W**, a distance of **89.33 feet** to a 60d nail set, for an angle point of this easement;
- 38) **N16°53'07"E**, a distance of **54.53 feet** to a 60d nail set, for an angle point of this easement;
- 39) **N02°13'55"E**, a distance of **206.83 feet** to a 60d nail set, for an angle point of this easement
- 40) **N49°47'47"E**, a distance of **202.67 feet** to a 60d nail set, for an angle point of this easement
- 41) **N65°56'32"E**, a distance of **70.95 feet** to a 60d nail set, for an angle point of this easement
- 42) **N36°26'38"E**, a distance of **262.93 feet** to a 60d nail set, for an angle point of this easement
- 43) **N77°05'56"E**, a distance of **195.30 feet** to a 60d nail set at a point of tangency of a circular curve to the right of this easement;
- 44) With said circular curve to the right, an arc length of **79.42 feet**, having a radius distance of **235.00 feet**, a delta angle of **19°21'48"**, a chord which bears **N86°46'50"E**, a distance of **79.04 feet** to a 60d nail set at a point of tangency of this easement;
- 45) **S83°32'16"E**, a distance of **286.87 feet** to a 60d nail set at a point of tangency of a circular curve to the left of this easement;
- 46) With said circular curve to the left, an arc length of **113.32 feet**, having a radius distance of **185.00 feet**, a delta angle of **35°05'47"**, a chord which bears **N78°54'51"E**, a distance of **111.56 feet** to a 60d nail set at a point of tangency of this easement;
- 47) **N61°21'57"E**, a distance of **27.00 feet** to a 60d nail set, for an angle point of this easement
- 48) **N51°16'05"E**, a distance of **37.14 feet** to a 60d nail set, for an angle point of this easement



- 49) **N65°14'13"E**, a distance of **40.01 feet** to a 60d nail set, for an angle point of this easement
- 50) **N72°10'05"E**, a distance of **65.02 feet** to a 60d nail set at a point of tangency of a circular curve to the right of this easement;
- 51) With said circular curve to the right, an arc length of **136.56 feet**, having a radius distance of **100.00 feet**, a delta angle of **78°14'29"**, a chord which bears **S68°42'40"E**, a distance of **126.19 feet** to a 60d nail set at a point of tangency of this easement;
- 52) **S29°35'26"E**, a distance of **211.37 feet** to a 60d nail set at a point of curvature of a circular curve to the left of this easement; and
- 53) With said circular curve to the left, an arc length of **58.98 feet**, having a radius distance of **40.00 feet**, a delta angle of **84°28'32"**, a chord which bears **S71°49'42"E**, a distance of **53.78 feet** to the **POINT OF BEGINNING**, containing 2.092-acre (91,145 square feet) of land.

BEARING BASIS NOTE

The bearings described herein are Texas State Plane Grid Bearings, Delta Zone-4203, NAD83(CORS). Project control points were established from Macias & Associates, L.P., Land Surveyors, reference point "CLM-32" having coordinate values of N=10,033,759.424, E=3,101,110.970 and reference point "F-11-3001" having coordinate values of N=10,022,637.008, E=3,098,305.276. Distances shown hereon are grid.



CERTIFICATION:

I do hereby certify that this easement description is true and correct to the best of my knowledge and belief, and was prepared from an actual on the ground survey of found property corners, under my supervision, and that the markers described herein actually exist, as described, at the time of my survey.

**As Prepared by
Landmark Surveying, LP**

Juan M. Canales, Jr.

Juan M. Canales, Jr.

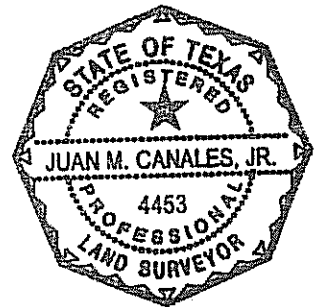
11-1-10

Date

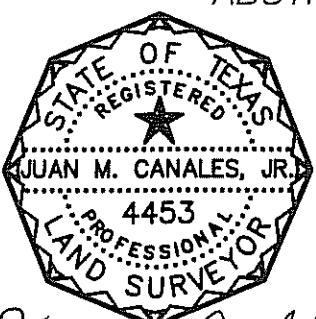
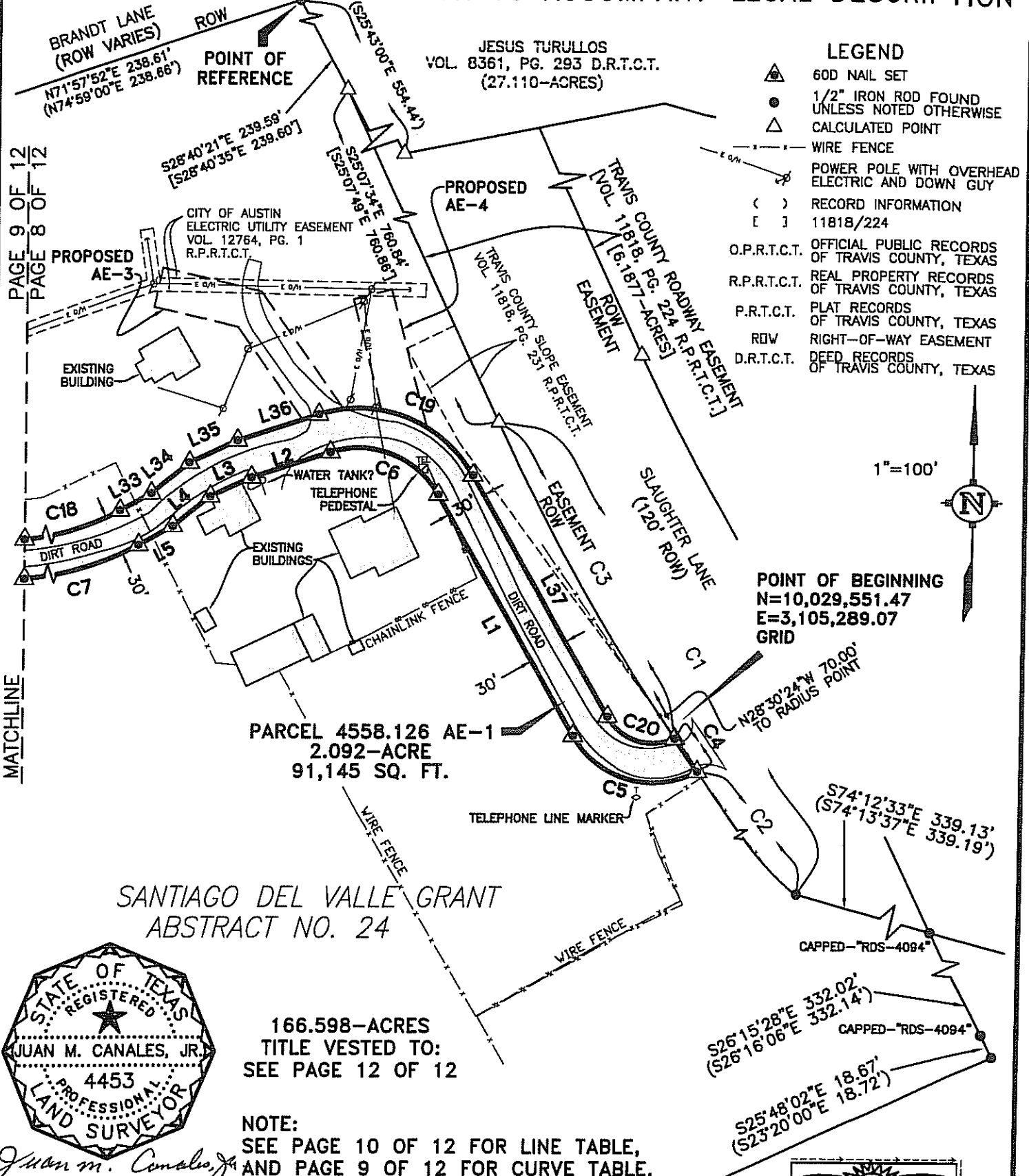
Registered Professional Land Surveyor No. 4453
Senior Project Manager
Firm Registration No. 100727-00

REFERENCES

MAPSCO 2009, 704-B GRID NO. G-12
TCAD PARCEL ID NO. 04-3908-0402
4558.126_AE-1_rev1.docx



SKETCH TO ACCOMPANY LEGAL DESCRIPTION



Juan M. Canales, Jr.
11-1-10

Revised: November 1, 2010
Client: URS
Date: November 1, 2010
Office: Stephen Lawrence
Crew: S.Dunn
F.B.: 1205/1
Path: c:\dwg 11\urs\urs-rinard to slaughter\grid\seg 23-grid-base.dwg
Job No.: 610-12-07

166.598-ACRES
TITLE VESTED TO:
SEE PAGE 12 OF 12

NOTE:
SEE PAGE 10 OF 12 FOR LINE TABLE,
AND PAGE 9 OF 12 FOR CURVE TABLE.

LOT 1, BLOCK A
151 ACRE TRACT SUBDIVISION
BK. 101, PGS. 245-247
P.R.T.C.T.

Landmark
SURVEYING, LP
1301 S. CAPITAL OF TEXAS HWY.
BUILDING B, SUITE 315
AUSTIN, TEXAS 78746
PH (512)328-7411 FAX (512)328-7413

SKETCH TO ACCOMPANY LEGAL DESCRIPTION

SANTIAGO DEL VALLE GRANT
ABSTRACT NO. 24

PROPOSED
AE-2

CITY OF AUSTIN
ELECTRIC UTILITY EASEMENT
VOL. 12764, PG. 1
R.P.R.T.C.T.

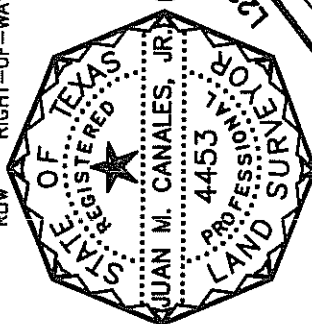
1"=100'



LEGEND

- 60D NAIL SET
- 1/2" IRON ROD FOUND
UNLESS NOTED OTHERWISE
- CALCULATED POINT
- WIRE FENCE
- POWER POLE WITH OVERHEAD
ELECTRIC AND DOWN GUY
- RECORD INFORMATION
- 11818/224

OFFICIAL PUBLIC RECORDS
OF TRAVIS COUNTY, TEXAS
REAL PROPERTY RECORDS
OF TRAVIS COUNTY, TEXAS
PLAT RECORDS
OF TRAVIS COUNTY, TEXAS
RIGHT-OF-WAY EASEMENT



166.598-ACRES
TITLE VESTED TO:
SEE PAGE 12 OF 12

PARCEL 4558.126 AE-1
2.092-ACRE
91,145 SQ. FT.

CURVE TABLE

CURVE	CHORD BEARING	CHORD DISTANCE	DELTA	ARC LENGTH	RADIUS
C1	S49°40'29"E	1,503.94'	49°05'44"	1,550.95'	1,810.00'
C2	(S49°40'43"E)	(1,503.97')	(49°05'48")	(1,550.99')	(1,810.00')
C3	S54°32'22"E	1,219.27'	39°21'58"	1,243.59'	1,810.00'
C4	S29°30'45"E	276.81'	08°46'16"	277.08'	1,810.00'
C5	S34°22'38"E	30.28'	00°57'31"	30.28'	1,810.00'
C6	N74°02'55"W	98.05'	88°54'58"	108.63'	70.00'
C7	N68°42'40"W	88.33'	78°14'29"	95.59'	70.00'
C8	S78°54'51"W	129.65'	35°05'47"	131.70'	215.00'
C9	S86°46'50"W	68.95'	19°21'48"	69.28'	205.00'
C10	N23°49'35"W	46.78'	39°02'28"	47.70'	70.00'
C11	N86°46'31"W	61.87'	86°51'24"	68.22'	45.00'
C12	S00°27'41"E	79.96'	32°00'32"	81.01'	145.00'
C13	S47°17'23"W	121.02'	63°29'37"	127.44'	115.00'
C14	N65°19'24"W	75.75'	71°16'50"	118.19'	95.00'
C15	S65°19'24"E	89.45'	63°29'37"	80.87'	65.00'
C16	N00°27'41"W	63.41'	32°00'32"	64.25'	85.00'
C17	N86°46'50"E	79.04'	19°21'48"	79.42'	235.00'
C18	N78°54'51"E	111.56'	35°05'47"	113.32'	185.00'
C19	S68°42'40"E	126.19'	78°14'29"	136.56'	100.00'
C20	S71°49'42"E	53.78'	84°28'32"	58.98'	40.00'

NOTE:

SEE PAGE 10 OF 12 FOR LINE TABLE,
AND PAGE 9 OF 12 FOR CURVE TABLE.

PAGE 9 OF 12
PAGE 10 OF 12



Landmark
SURVEYING, LP

1301 S. CAPITAL OF TEXAS HWY.
BUILDING B, SUITE 315
AUSTIN, TEXAS 78746
PH (512)328-7411 FAX (512)328-7413

MATCHLINE

Revised: November 1, 2010
Client: URS
Date: November 1, 2010
Office: Stephen Lawrence
Crew: S.Dunn
F.B.: 1205/1
Path: c:\dwg\11\urs\urs-rinard to slaughter\grid\seg 23-grid-base.dwg
Job No.: 610-12-07

SKETCH TO ACCOMPANY LEGAL DESCRIPTION

LEGEND

- 60D NAIL SET
- 1/2" IRON ROD FOUND UNLESS NOTED OTHERWISE
- CALCULATED POINT
- WIRE FENCE
- POWER POLE WITH OVERHEAD ELECTRIC AND DOWN GUY
- RECORD INFORMATION
- 11818/224
- OFFICIAL PUBLIC RECORDS OF TRAVIS COUNTY, TEXAS
- REAL PROPERTY RECORDS OF TRAVIS COUNTY, TEXAS
- P.LAT. RECORDS OF TRAVIS COUNTY, TEXAS
- RDW RIGHT-OF-WAY EASEMENT



1"=100'

JESUS TURULLOLS
VOL. 8934, PAGE 985
R.P.R.T.C.T.
(25.25-ACRES)

LOT 128
BLOCK C
PARKSIDE AT SLAUGHTER
CREEK SECTION 3
DOC. NO. 200300206
O.P.R.T.C.T.
(OPEN SPACE / GREENBELT,
DRAINAGE, ELECTRIC AND
TELECOMM. EASEMENT)
DOC. NO. 2003184130
O.P.R.T.C.T.
(69.208-ACRES)

Revised: November 1, 2010
Client: URS
Date: November 1, 2010
Office: Stephen Lawrence
Crew: S. Dunn
F.B.: 1205/1
Path: c:\dwg 11\urs\urs-rinard to slaughter\grid\seg 23-grid-base.dwg
Job No.: 610-12-07

NOTE:
SEE PAGE 10 OF 12 FOR
LINE TABLE, AND PAGE 9 OF
12 FOR CURVE TABLE.

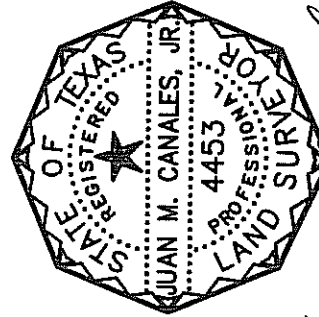
CITY OF AUSTIN AND/OR SOUTHLAND
OAKS MUNICIPAL UTILITY DISTRICT
WATER AND WASTEWATER EASEMENT
VOL. 10011, PG. 652 R.P.R.T.C.T.

SANTIAGO DEL VALLE GRANT
ABSTRACT NO. 24

166.598-ACRES
TITLE VESTED TO:
SEE PAGE 12 OF 12

PARCEL 4558.126 AE-1
2.092-ACRE
91,145 SQ. FT.

BLOCK L
ONION CREEK SECTION 6-A
(BK. 85, PGS. 146B-146D P.R.T.C.T.)
(DRAINAGE AND PUBLIC UTILITY
EASEMENT)



Juan M. Canales, Jr.
11-1-10 PAGE 10 OF 12

LINE TABLE

LINE	BEARING	DISTANCE
L1	N29°35'26"W	211.37'
L2	S72°10'05"W	63.20'
L3	S65°14'13"W	34.52'
L4	S51°16'05"W	36.12'
L5	S61°21'57"W	29.65'
L6	N83°32'16"W	286.87'
L7	S77°05'56"W	184.19'
L8	S36°26'38"W	293.64'
L9	S04°18'21"E	311.83'
L10	N29°40'59"W	42.19'
L11	S60°19'01"W	13.19'
L12	N04°18'21"W	179.26'
L13	N43°20'49"W	4.67'
L14	S49°47'47"W	108.84'
L15	S02°13'55"W	197.47'
L16	S16°53'07"W	49.40'
L17	S16°27'57"E	80.35'
L18	S15°32'35"W	99.00'
L19	S79°02'11"W	122.13'
L20	N29°40'59"W	30.63'
L21	N60°19'01"E	30.00'
L22	S29°40'59"E	30.63'
L23	N79°02'11"E	122.13'
L24	N15°32'35"E	99.00'
L25	N16°27'57"W	89.33'
L26	N16°53'07"E	54.53'
L27	N02°13'55"E	206.83'
L28	N49°47'47"E	202.67'
L29	N65°56'32"E	70.95'
L30	N36°26'38"E	262.93'
L31	N77°05'56"E	195.30'
L32	S83°32'16"E	286.87'
L33	N61°21'57"E	27.00'
L34	N51°16'05"E	37.14'
L35	N65°14'13"E	40.01'
L36	N72°10'05"E	65.02'
L37	S29°35'26"E	211.37'



Landmark
SURVEYING, LP

1301 S. CAPITAL OF TEXAS HWY.
BUILDING B, SUITE 315
AUSTIN, TEXAS 78746
PH (512)328-7411 FAX (512)328-7415

SKETCH TO ACCOMPANY LEGAL DESCRIPTION

The property described hereon is contained within Zone AE, Zone X (Shaded), and Zone X as scaled from F.I.R.M. Map Number 48453C0595H, dated September 26, 2008, as published by the Federal Emergency Management Agency, the purpose of which is for flood insurance only.

Restrictive Covenant and Easement Note:

1. Deleted.

10a. A pipe line and appurtenance easement granted to Hope Engineering and Supply Company, dated January 19, 1928, by instrument recorded in Volume 413, Page 475 of the Deed Records of Travis County, Texas MAY AFFECT the subject easement; however cannot be determined with existing evidence.

10b. An electric transmission and/or distribution line easement granted to Texas Power and Light Company, dated November 24, 1936, by instrument recorded in Volume 551, Page 574 of the Deed Records of Travis County, Texas MAY AFFECT the subject easement; however cannot be determined with existing evidence.

10c. An electric transmission and/or distribution line easement granted to Texas Power and Light Company, dated October 27, 1936, by instrument recorded in Volume 554, Page 329 of the Deed Records of Travis County, Texas MAY AFFECT the subject easement; however cannot be determined with existing evidence.

10d. A telephone line easement granted to Southwestern Bell Telephone Company, dated January 29, 1942, by instrument recorded in Volume 692, Page 221 of the Deed Records of Travis County, Texas MAY AFFECT the subject easement; however cannot be determined with existing evidence.

10e. An electric transmission line easement in favor of the Lower Colorado River Authority as set out in Condemnation Proceeding under Cause No. 79, Probate Court of Travis County, Texas MAY AFFECT the subject easement; however cannot be determined with existing evidence.

10f. An electric and telephone line easement granted to the City of Austin, dated October 23, 1956, by instrument recorded in Volume 1914, Page 317 of the Deed Records of Travis County, Texas DOES NOT APPLY to the subject easement.

10g. A pipe lines and right of way easement granted to United Gas Pipe Line Company, dated October 26, 1960, by instrument recorded in Volume 2245, Page 384 of the Deed Records of Travis County, Texas DOES NOT APPLY to the subject easement.

10h. An electric and telephone line easement granted to the City of Austin, dated September 25, 1962, by instrument recorded in Volume 2520, Page 137 of the Deed Records of Travis County, Texas DOES NOT APPLY to the subject easement.

10i. An electric and telephone line easement granted to the City of Austin, dated May 12, 1965, by instrument recorded in Volume 2969, Page 228 of the Deed Records of Travis County, Texas DOES NOT APPLY to the subject easement.

10j. An electric and telephone line easement granted to the City of Austin, dated August 15, 1967, by instrument recorded in Volume 3358, Page 1762 of the Deed Records of Travis County, Texas DOES NOT APPLY to the subject easement.

10k. A utility easement granted to CGH Joint Venture One, a Texas Joint Venture, by instrument dated April 1, 1985, recorded in Volume 9106, Page 638 of the Real Property Records of Travis County, Texas DOES NOT APPLY to the subject easement.

BEARING BASIS:

THE BEARINGS DESCRIBED HEREIN ARE TEXAS STATE PLANE GRID BEARINGS, CENTRAL ZONE-4203, NAD83(CORS). PROJECT CONTROL POINTS WERE ESTABLISHED FROM MACIAS & ASSOCIATES, L.P., LAND SURVEYORS, REFERENCE POINT "CLM-32" HAVING COORDINATE VALUES OF N=10,033,759.424, E=3,101,110.970 AND REFERENCE POINT "F-11-3001" HAVING COORDINATE VALUES OF N=10,022,637.008, E=3,098,305.276. DISTANCES SHOWN HEREON ARE GRID.

Revised: November 1, 2010

Client: URS

Date: November 1, 2010

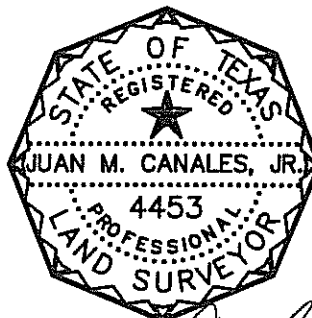
Office: Stephen Lawrence

Crew: S.Dunn

F.B.: 1205/1

Path: c:\dwg 11\urs\urs-rinard to slaughter\grid\seg 23-grid-base.dwg

Job No.: 610-12-07



Juan M. Canales, Jr.
11-1-10


Landmark
SURVEYING, LP
1301 S. CAPITAL OF TEXAS HWY.
BUILDING B, SUITE 315
AUSTIN, TEXAS 78748
PH: (512)328-7411 FAX: (512)328-7413

SKETCH TO ACCOMPANY LEGAL DESCRIPTION

10l. A water and wastewater easement granted to the City of Austin and/or Southland Oaks Municipal Utility District, by instrument dated September 18, 1986, recorded in Volume 10011, Page 652 of the Real Property Records of Travis County, Texas DOES APPLY to the subject easement.

10m. A roadway easement granted to Travis County, by instrument dated November 11, 1992, recorded in Volume 11818, Page 224 of the Real Property Records of Travis County, Texas DOES NOT APPLY to the subject easement.

10n. A lateral support easement granted to Travis County, by instrument dated November 11, 1992, recorded in Volume 11818, Page 231 of the Real Property Records of Travis County, Texas DOES NOT APPLY to the subject easement.

10n. A lateral support easement granted to Travis County, by instrument dated November 11, 1992, recorded in Volume 11818, Page 231 of the Real Property Records of Travis County, Texas DOES NOT APPLY to the subject easement.

10o. An electric transmission line easement in favor of the Lower Colorado River Authority as set out in Condemnation Proceeding under Cause No. 2142, Probate Court of Travis County, Texas, as recorded in Volume 12454, Page 80 of the Real Property Records of Travis County, Texas DOES NOT APPLY to the subject easement.

10p. A electric utility easement granted to the City of Austin, by instrument dated September 3, 1996, recorded in Volume 12764, Page 1 of the Real Property Records of Travis County, Texas DOES APPLY to the subject easement.

10q. Right to extract gravel, stone, sand and other road building material granted to Travis County as set out in Volume 268, Page 133, Volume 371, Page 76, and Volume 333, Page 331 of the Deed Records of Travis County, Texas DO NOT APPLY to the subject easement.

10r. A drainage easement granted to Travis County, by instrument dated April 24, 2003, recorded in Document No. 2003093738 of the Official Public Records of Travis County, Texas DOES NOT APPLY to the subject easement.

10s. A temporary access easement granted to Travis County, by instrument dated April 24, 2003, recorded in Document No. 2003093739 of the Official Public Records of Travis County, Texas DOES NOT APPLY to the subject easement.

All easements of which I have knowledge and those recorded easements furnished by Commonwealth Land Title Insurance Company, according to GF No. 00092668, are shown or noted hereon. Other than visible easements, no unrecorded or unwritten easements which may exist are shown hereon.

I hereby certify that a survey was made on the ground of the easement shown hereon; that there are no visible discrepancies, conflicts, shortages in area, boundary line conflicts, encroachments, easements or right-of-ways, except as shown; that said easement does not have access to and from a public roadway; and that this plat is an accurate representation of the easement to the best of my knowledge.

NOTE:

IMPROVEMENTS SHOWN HEREON ARE SURVEYED OR MAPPED BY OTHERS AND NOT SURVEYED ON THE GROUND BY LANDMARK SURVEYING, LP DUE TO DENIAL OF ACCESS BY OWNERS.

AS SURVEYED BY
LANDMARK SURVEYING, LP
FIRM REGISTRATION NO. 100727-00

166.598-ACRES

TITLE VESTED TO:

CURTIS B. FIGER AND BILLIE JO FIGER 11836/1356
MICHAEL G. FIGER 12088/844
DONALD K. FIGER 12088/856
BETSY A. LAMBETH 12088/862
MICHAEL G. FIGER 12097/160
DONALD K. FIGER 12097/170
BETSY A. LAMBETH 12097/175
DAVID A. BREWER AND BILLIE J. FIGER 12159/85
KEITH H. HARMON AND BONNIE HARMON DOC. NO.
2000178631

JUAN M. CANALES, JR.
Registered Professional Land Surveyor No. 4453
DATE: November 1, 2010

THIS SURVEY PLAT IS VALID ONLY IF IT BEARS THE
ORIGINAL SIGNATURE OF THE ABOVE SURVEYOR

Revised: November 1, 2010

Client: URS
Date: November 1, 2010
Office: Stephen Lawrence
Crew: S.Dunn
F.B.: 1205/1
Path: c:\dwg 11\urs\urs-rinard to slaughter\grid\seg 23-grid-base.dwg
Job No.: 610-12-07

