

# IMAGINEAUSTIN

## comprehensive plan

Urban Forestry Board  
December 15, 2010

Carol Haywood  
Planning and Development Review Department  
Carol.Haywood@ci.austin.tx.us



---

---

---

---

---

---

---

---

- Comprehensive Plans
- Imagine Austin Process
- Vision Statement
- Boards and Commissions' Participation

### Presentation Overview



---

---

---

---

---

---

---

---



### Austin Tomorrow Comprehensive Plan



---

---

---

---

---

---

---

---

- General; not specific
- Establishes common ground and a long-term vision
- Addresses growth and development
- Fosters coordination and internal consistency



### What is a Comprehensive Plan?




---

---

---

---

---

---

---

---

- A neighborhood, corridor or other small area plan
- A change of land use or zoning



### What a Comprehensive Plan Is Not?




---

---

---

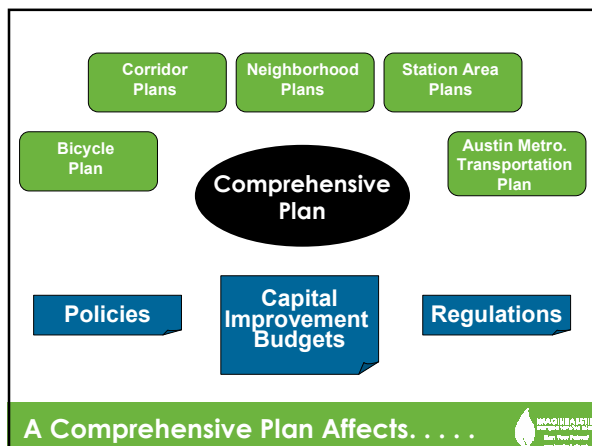
---

---

---

---

---



### A Comprehensive Plan Affects. . . .




---

---

---

---

---

---

---

---

### Phase 1

Project Kick-Off

Completed  
October 2009

### Phase 2

Vision & Plan  
Framework

in process now

### Phase 3

Comprehensive  
Plan

2011

Imagine Austin Process

---

---

---

---

---

---

---

---

## Community Engagement

## Sustainability

## Implementation

Imagine Austin Themes

---

---

---

---

---

---

---

---

### Community Engagement

Nearly 12,000 people participated:

- Surveys
- Public Meetings
- Meeting-In-A Box

Listening to the Community

---

---

---

---

---

---

---

---

*As it approaches its 200th anniversary, Austin is a beacon of sustainability, social equity and economic opportunity; where diversity and creativity are celebrated; where community needs and values are recognized; where leadership comes from its citizens and where the necessities of life are affordable and accessible to all.*

*Austin's greatest asset is its people: passionate about our city, committed to its improvement, and determined to see this vision become a reality.*

### Vision Statement Introduction



---

---

---

---

---

---

---

---



### Livable



---

---

---

---

---

---

---

---



### Natural and Sustainable



---

---

---

---

---

---

---

---



---

---

---

---

---

---

---

---



---

---

---

---

---

---

---

---



---

---

---

---

---

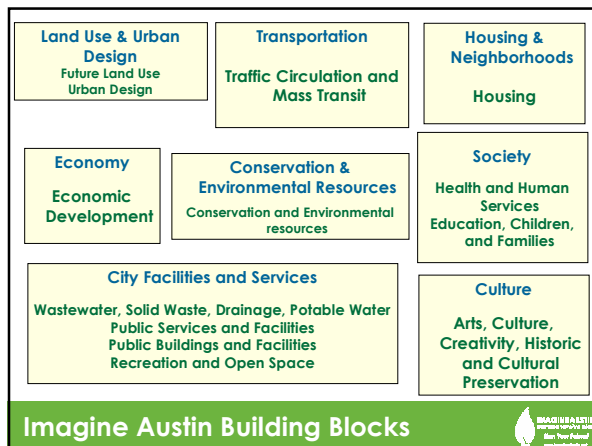
---

---

---








---

---

---

---

---

---

---

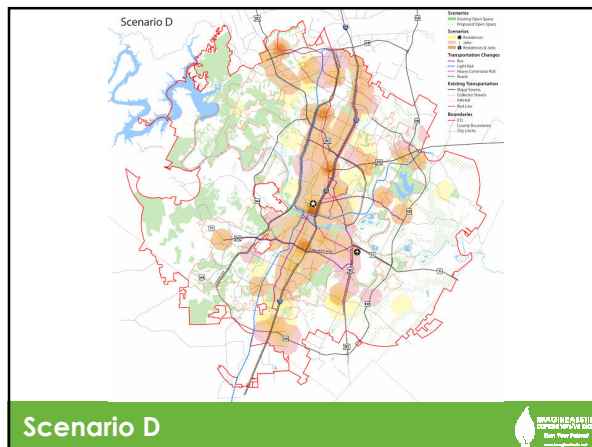
---

---

---

---

---




---

---

---

---

---

---

---

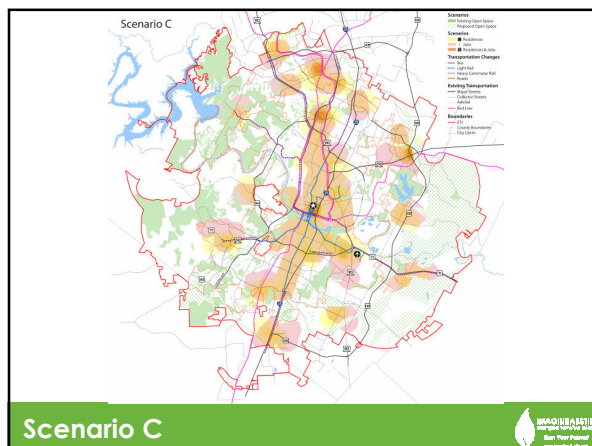
---

---

---

---

---




---

---

---

---

---

---

---

---

---

---

---

---

- Community Forum Series #3 Survey open until December 10 available at [imagineaustin.net](http://imagineaustin.net)
- Preferred scenario developed and tested (Fall)
- Plan Framework developed (Fall/Winter)
- Phase II Completed—Preferred Scenario and Plan Framework endorsed (Winter)

#### Next Steps—Wrapping Up Phase II




---

---

---

---

---

---

---

---

### Phase 3 Comprehensive Plan 2011

- Building Blocks Charrette—set direction for developing the Plan Framework into full Comprehensive Plan and Elements (March 2011)
- Working Group Workshops
- Create the plan
- Review and adoption

#### Imagine Austin's Next Phase




---

---

---

---

---

---

---

---

- Participate in the Working Group Workshops
- Choose a member(s) to serve as liaison(s) / representative to the Working Group
- Provide input on the Plan Framework
- Identify constituent groups
- Carol.Haywood@ci.austin.tx

#### How Can You Help?




---

---

---

---

---

---

---

---



**[www.ImagineAustin.net](http://www.ImagineAustin.net)**

**Become a Facebook fan of**  
*IMAGINE AUSTIN*

**Twitter**

**<http://twitter.com/ImagineAustin>**

**How to Stay Involved**



---

---

---

---

---

---

---

---



**Questions?**



---

---

---

---

---

---

---

---