

# OFFICE of Sustainability



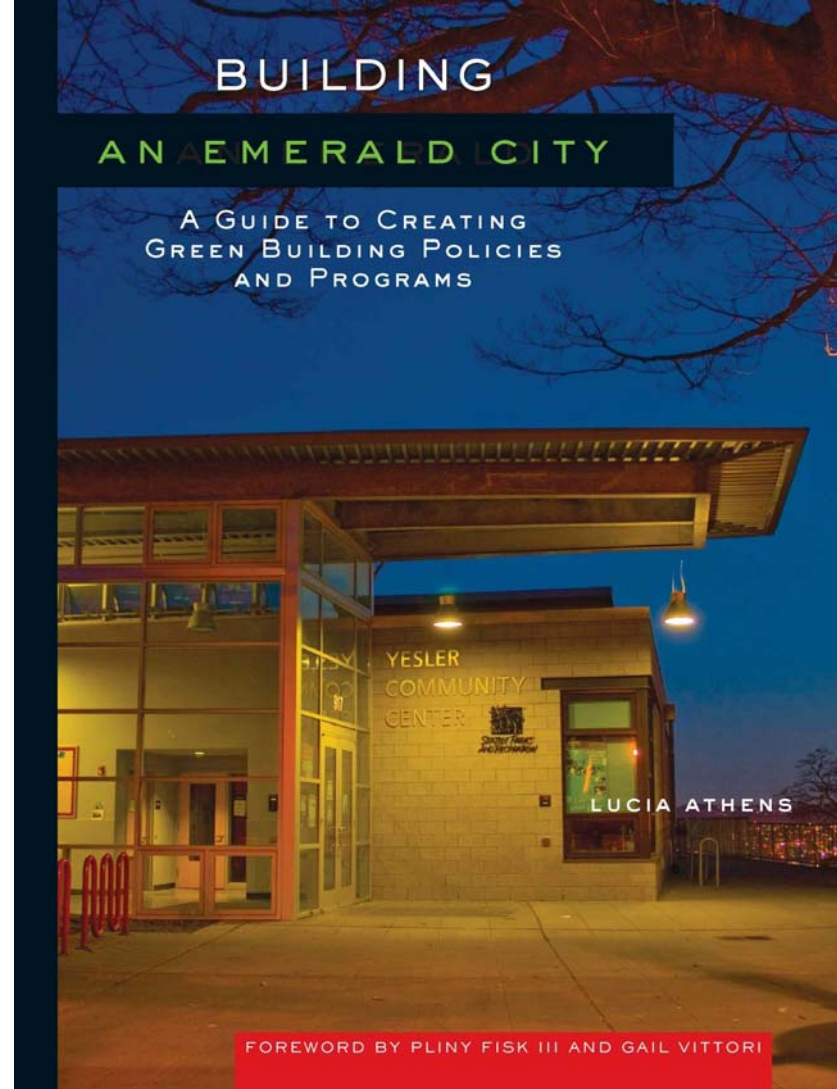
Community Development  
Commission

Briefing February 22, 2011

Lucia Athens  
Chief Sustainability Officer

# Building an Emerald City: A Guide to creating green building policies and programs

Lucia Athens



- Seattle 1<sup>st</sup> to adopt LEED in February 2000

By **unanimous resolution**

- **16 LEED Certified buildings**
- **14 more in progress**

### ❖ **Many Project Types**

- Police, Courthouse, Fire
- Library, Community Center
- Environmental Learning Center
- Water Treatment Plant
- Waste Transfer Stations

# Seattle LEED *Portfolio*



Image: Steve Keating

**Fisher Pavilion**  
**Northgate Community**

**LEED NC Silver**  
**Center/Library**  
**LEED Gold**

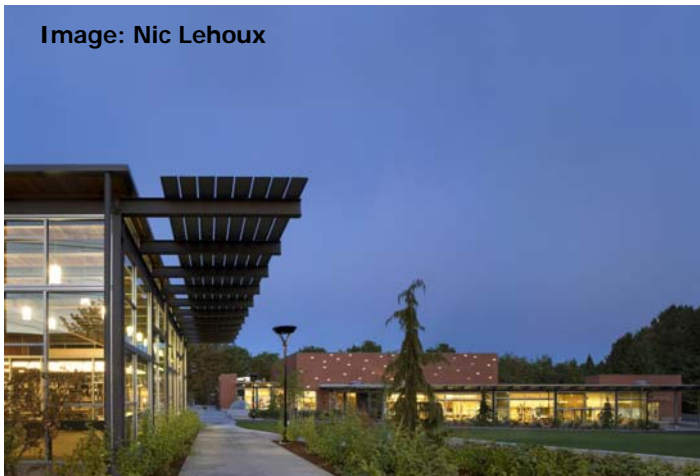


Image: Nic Lehoux

1. CARKEEK PARK ENVIRONMENTAL LEARNING CTR **gold**
2. CEDAR RIVER WATER TREATMENT FACILITY **gold**
3. FISHER PAVILION **certified**
4. HIGH POINT COMMUNITY CTR **gold**
- 5/6. AIRPORT WAY CTR Building A & C **gold/silver**
7. CENTRAL LIBRARY **silver**
8. SEATTLE CITY HALL **gold**
9. JUSTICE CENTER **silver**
10. YESLER COMMUNITY CENTER **gold**
11. NORTHGATE COMMUNITY CTR & LIBRARY **gold**
12. FIRE STATION 10 **silver**
13. JOINT TRAINING FACILITY **silver**
14. MONTLAKE COMMUNITY CENTER **silver**
15. SEATTLE CENTER GARAGE **gold**
16. NORTH CASCADES ENVIRONMENTAL LEARNING CENTER **gold**

# OFFICE of Sustainability

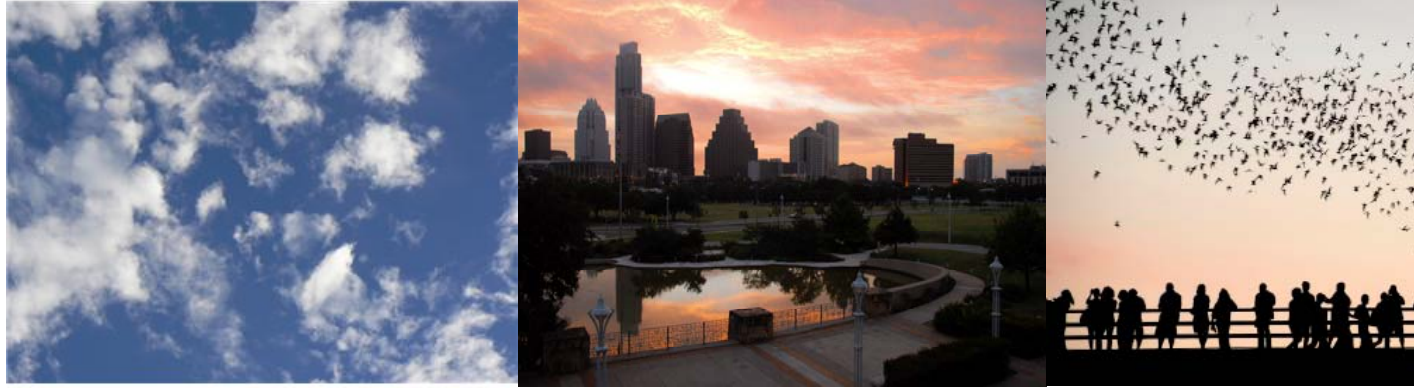


## *Today's Topics*

1. What is Sustainability?
2. Climate Protection Program
3. Framework and STAR program



# OFFICE of Sustainability



## *Today's Topics*

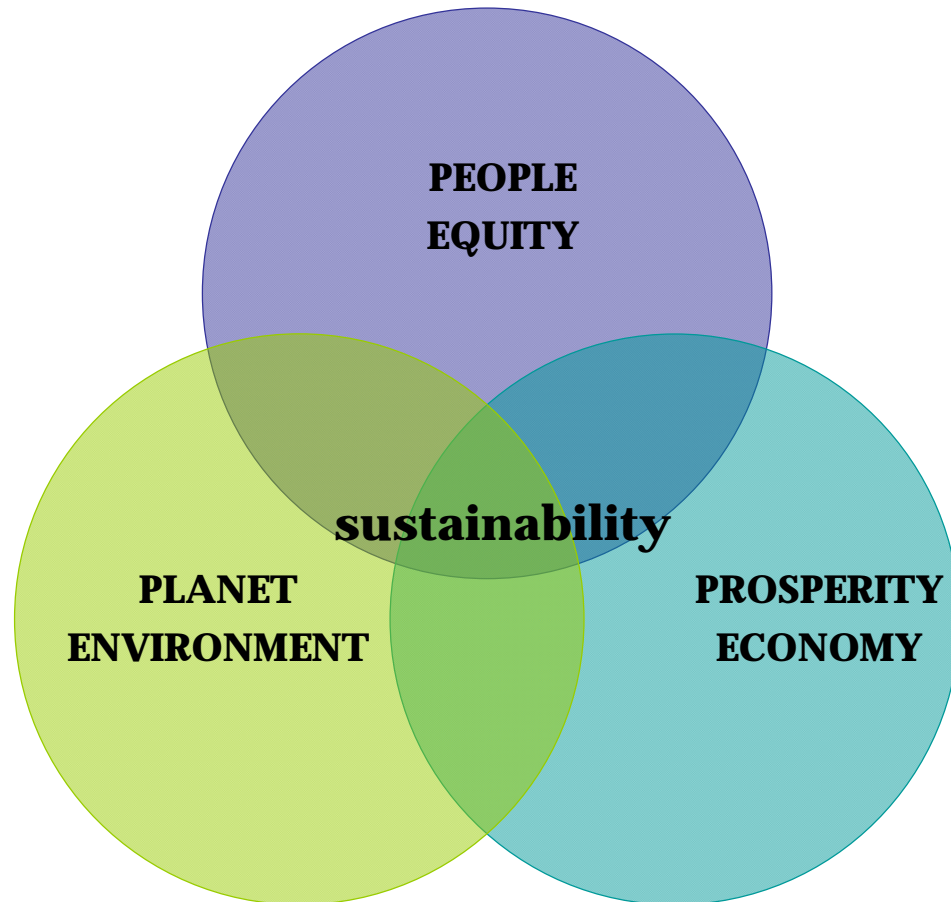
1. What is Sustainability?
2. Climate Protection Program
3. Framework and STAR program

# What is sustainability?

## *the triple bottom line*

### The 3 e's or p's

- **Equity/People**
- **Economy/Prosperity**
- **Environment/Planet**



*Sustainability means finding a balance among 1) prosperity and jobs, 2) conservation & environment, and 3) community health & cultural vitality.*

*It means taking positive, proactive steps to protect quality of life now, and for future generations.*

# sustainability is:

values-based

non-partisan

a continuous journey



Image:  
Seattle Public Libraries



Images: YouthCare

Serving homeless and at-risk youth since 1974.

# OFFICE of Sustainability

## *Our Mission*

We inspire people to take action and lead change toward the city's shared objectives for a healthy environment, excellent quality of life, and continued economic vitality.





# OFFICE of Sustainability



## *Today's Topics*

1. What is Sustainability?
2. Climate Protection Program
3. Framework and STAR program

# Environmental Awareness Awards

**Nominations Jan 1 – Mar 1**

**<http://www.ci.austin.tx.us/acpp/awards.htm>**

## **Categories:**

- **Mayor's Individual Achievement**
- **Large Business (< 100 employees)**
- **Small Business (> 100 employees)**
- **City of Austin Program**
- **Community/Non-profit**
- **School or Education Program**
- **Government Agency**

**Winner's recognized April 21 City Council Meeting**

**Reception to follow award ceremony**



# Carbon Offset Challenge Grants

**City of Austin set aside \$40,000 to:**

***identify and support local projects that reduce or sequester greenhouse gas emissions resulting in the creation of “Carbon Offsets”***

- **Carbon Offsets will eventually be sold via new purchase function added to existing carbon calculator**
- **RFP Application deadline March 8**
- **Project selection/announcement April**



# Green Business Program

Internal departmental coordination to develop framework for:

## Green Business Recognition Program

- Solid Waste Services
- Austin Energy
- Austin Water Utility
- Transportation
- Economic Growth and Redevelopment Services

**Provide recognition for Austin businesses that successfully work toward and achieve measurable improvements**

- Single-point of navigation for City programs for businesses
- Leverage confluences/common goals in existing City programs
- Identify gaps in existing programs
- Increase accessibility and efficiency for the business community





# OFFICE of Sustainability



## *Today's Topics*

1. What is Sustainability?
2. Climate Protection Program
3. Framework and STAR program

# many City of Austin sustainability-related programs

## Environment

- Climate Protection Program, Austin Energy Green Building, Solar Rebates, Energy Efficiency 0% interest Loans & Rebates, Rainwater Harvesting Rebates, Free Low-Flush Toilets, Zero Waste Plan, Wildland & Habitat Conservation, etc.

## Equity

- Healthy Neighborhoods, Homeless Assistance, Child Care Services, Consumer Health, Family Violence Prevention, Art in Public Places, Nature & Science Education, etc.

## Economy

- Small Business & Workforce Development, Economic Development & Community Reinvestment, Shop Local program, etc.

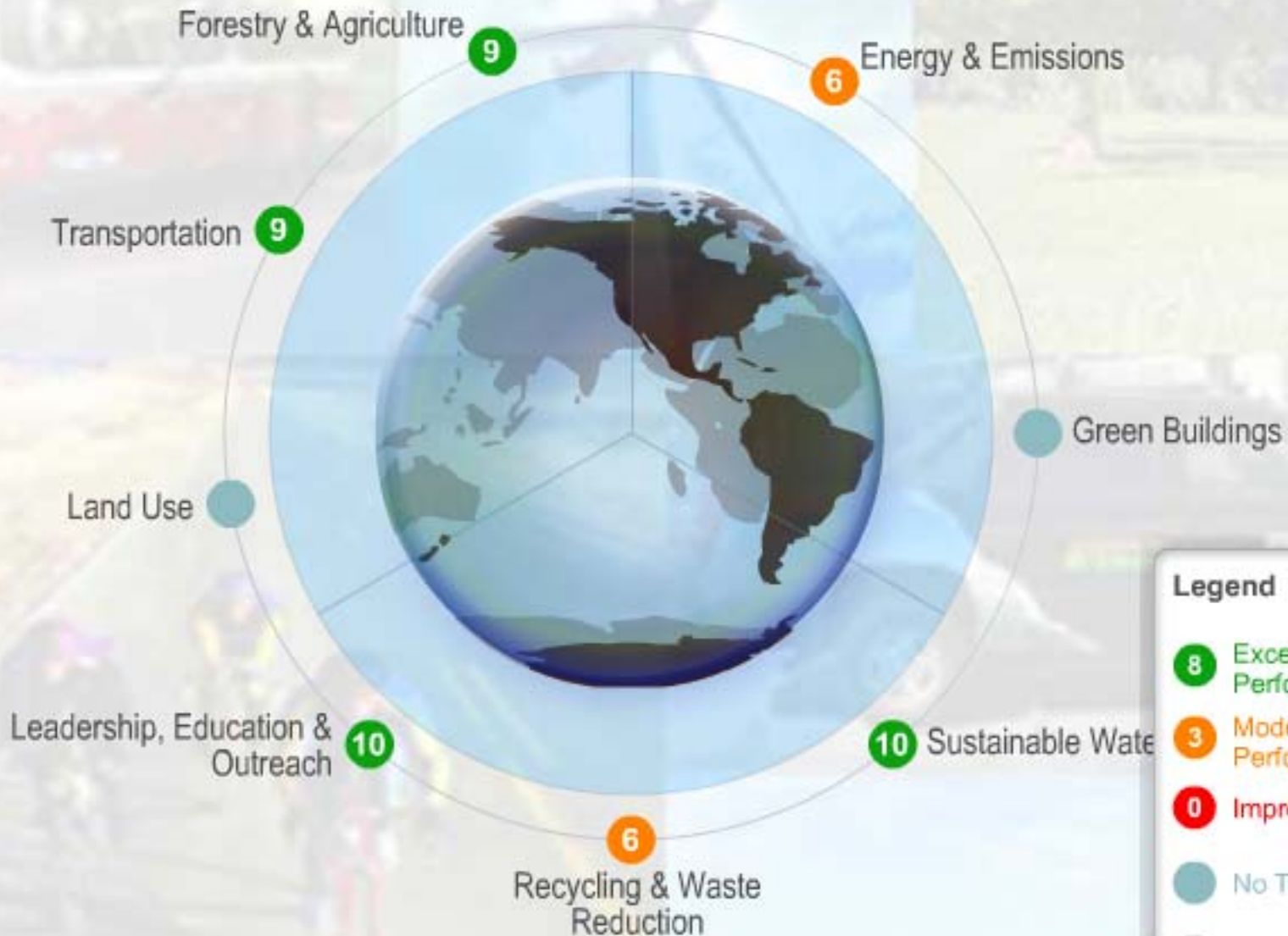


# Scattered Existing Landscape

# sustainability framework



Albuquerque



## Legend

- 8 Excellent Performance
- 3 Moderate Performance
- 0 Improvement Area
- No Targets Set
- Indirectly Related



# STAR Community Index

## Austin selected as one of 10 cities for Beta Test Pilot

- NYC
- District of Columbia
- St. Louis
- Des Moines
- Cranberry Township, PA
- Atlanta
- Chatanooga
- Boulder
- King County, WA



*National League of Cities*

# STAR Community Index

A ground-breaking program that will offer local governments a roadmap for improving community sustainability.

- Standard and comprehensive approach
- National, consensus-based framework (rating system)
- Sustainability planning and performance management tool



*National League of Cities*

# STAR Community Index

## 81 Goals for Triple Bottom Line

### Environment

- Natural Systems
- Planning & Design
- Energy & Climate

### Economy

- Economic Prosperity
- Employment & Workforce Training

### Equity/Society

- Education, Arts & Community
- Health & Safety
- Affordability & Social Equity



*National League of Cities*





Seattle

## Natural Systems

Natural Ecosystems
Green Infrastructure
Watershed & Land Use
Waste Minimization
Water Quality & Supply
Drinking Water Quality
Biodiversity & Invasive Species
Resource Lands
Agriculture & Aquaculture
Ambient Noise & Light



Boulder

## Planning & Design

Comprehensive Planning
Transportation & Mobility
Compact & Complete Communities
Housing
Interconnected Land Use
Historic Preservation & Cultural Heritage
Public Engagement & Participation
Land Conservation
Code Barriers
Public Spaces
Excellence in Design
Design for People



Albuquerque

## Energy & Climate

Greenhouse Gas Mitigation
Energy Use
Energy Supply
Energy Smart Buildings
Climate Adaptation
Alternative Fuels & Infrastructure
Industrial Sector Energy Use
Agricultural Climate Impacts





## Economic Prosperity

Enterprise Support
Industry Sector Development+Revitalization
Market Development
Community-Based Economic Development
Economic Localization
Land Redevelopment & Revitalization
Food System

## Employment & Workforce Training

Employment Opportunity
Employment Benefits
Labor Rights
Living Wages
Supportive Workplaces
Workplace Learning & Career Paths
Workforce Development Comprehensive Plan
Workforce Training
Resources for Success

What if... the economy worked for people and communities, and not the other way around.



## Education, Arts & Community

Education Opportunities
Education Environments
School-Community Engagement
Ecological Literacy
Arts & Culture
Arts & Cultural Civic Support
Cultural Practices
Neighborhood Vitality
Civic Literacy + Engagement
Financial Literacy
Cultural Practices

## Health & Safety

Health System
Health & Safety Literacy
Workplace Health & Safety
Food Access & Nutrition
Drinking Water Quality
Outdoor Air Quality
Indoor Air Quality
Toxics Reduction
Natural & Human Hazards
Emergency Prevention & Response
Safe Communities
Active Living & Recreation

## Affordability & Social Equity

Government Transparency
Revenue Generation
Public Expenditures & Financial Investment
Infrastructure Investment
Social Cohesion
Human Services
Poverty Prevention & Alleviation
Civil & Human Rights
Social & Cultural Diversity
Environmental Justice
Equity Literacy
Adjudication & Restorative Justice
Community Empowerment
Equity Assessment & Planning

# STAR Beta Development Timeline

	2011											2012			
	Feb	Mar	Apr	May	Jun	Jul	Aug	Sep	Oct	Nov	Dec	Jan	Feb	Mar	Apr
<b>STAR Measures Development</b>															
<b>Define Requirements</b>															
<b>Design and Technical Architecture</b>															
<b>Design Charette</b>															
<b>Develop Prototype</b>			*												
<b>Develop Alpha Release</b>															
<b>User Feedback</b>															
<b>Develop Beta Release</b>															
<b>User Feedback</b>															
<b>Complete Version 1</b>															
<b>Release V1</b>															*





# STAR Community Index

## Initial Goal Areas for Beta Pilot

- Natural Resource Inventory & Planning
- Comprehensive Planning
- Greenhouse Gas Reduction
- Industry Sector Development & Revitalization
- Workforce Development Planning
- Educational Opportunities
- Food Access & Nutrition
- Equity Assessment & Planning



## Beta Test Pilot Cities

- Austin
- NYC
- District of Columbia
- St. Louis
- Des Moines
- Cranberry Township, Atlanta
- Chatanooga
- Boulder
- King County, WA



# STAR Community Index

## Initial Goal Areas for Beta Pilot

- Industry Sector Development & Revitalization
- Workforce Development Planning
  - stakeholder engagement & collaboration
  - green jobs & living wage jobs
  - equity gaps for human capital initiatives
  - local workforce investment
  - apprenticeship and training/re-training





# STAR Community Index

## Initial Goal Areas for Beta Pilot

### ■ Food Access & Nutrition

- farmer's markets
- zoning for community gardens
- school wellness policies for healthy food & nutrition standards
- food literacy programs
- # residents living within walkable half-mile of a grocery store



# STAR Community Index

## Initial Goal Areas for Beta Pilot

- Equity Assessment & Planning
  - stakeholder engagement & participation
  - access of all residents to safe & affordable opportunities (infrastructure, jobs, food, education, health, parks etc)
  - distribution and shared positive and negative impacts of development
  - education re: equity, rights, access to transparent data



# OFFICE of Sustainability Community Coffee



**Series of informal coffee discussions**

**Past: Friday, January 28<sup>th</sup>**

**Schlotzky's**

**Next: This Friday, February 25<sup>th</sup>**

**Central Market Café**

**4001 North Lamar**

**8:00 – 9:00 AM**

**Contact:**

**[Katherine.Gregor@ci.austin.tx.us](mailto:Katherine.Gregor@ci.austin.tx.us)**



# OFFICE of Sustainability



QUESTIONS?

Lucia Athens  
Chief Sustainability Officer

[Lucia.Athens@ci.austin.tx.us](mailto:Lucia.Athens@ci.austin.tx.us)