

City of Austin

Invasive Plant Species Management Plan For City Managed Property

Environmental Board Briefing



What is an Invasive Species:

- An alien species whose introduction does or is likely to cause economic or environmental harm or harm to human health (EO 13112).



Texas Bluebonnet (*Lupinus texensis*) & Wild Turnip (*Rapistrum rugosum*)
Photo courtesy of Mark Simmons, LBJWC

Why do we care:

- Productivity, value, and management of land and water resources
- Significant economic, social, and ecological impacts
- Well-organized and funded prevention programs



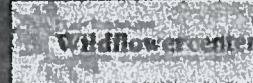
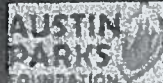
Roadside population of *R. rugosum* 'rosettes' before over-seeding treatment. November 2000.

Same plot 7 months later: *G. pulchella* flowers (red/orange) versus *R. rugosum* (purple stems). High seed rate. June 2001.

Details to Date:

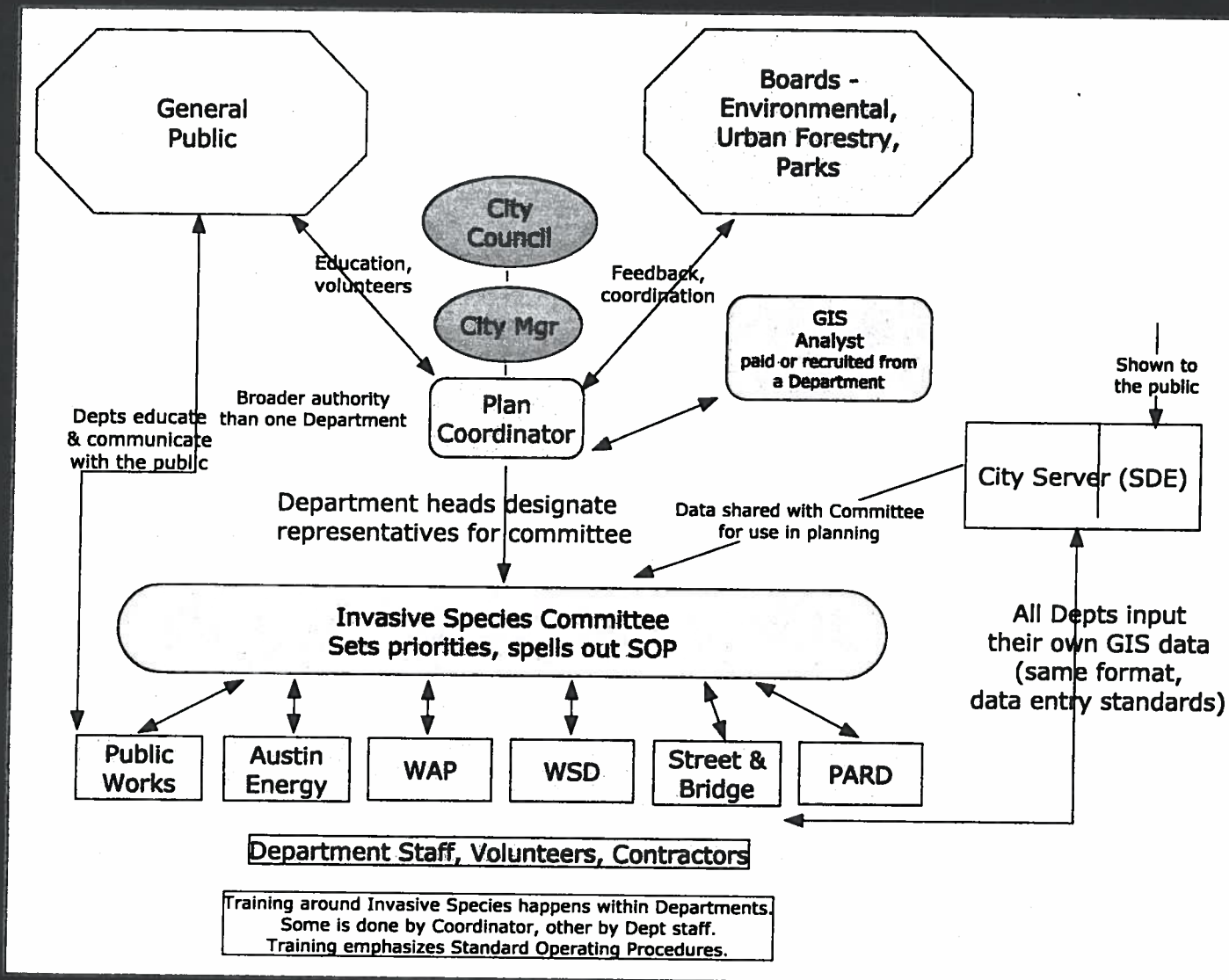
4/8/2010: COA Resolution

- City-wide plan
- Annual costs of control; Include volunteer efforts
- Education and public awareness
- Interdepartmental Working Group
- Collaboration and partnerships
- Integrated Pest Management programs
- Sustainable funding sources



Details to Date:

4/11/2011: Plan Coordination and Management



Current Status:

5/2011: Development of Draft

- Introduction (Definition, Development Process)
- Existing City Programs (Importance of Unified Plan)
- Regional Programs (Impact, Areas of Overlap)
- Integrated Pest Management Process (Goals)
- Costs and Funding Sources
- Conclusions, Citations, Appendices

Details to Date:

11/2010: Executive Committee

- 2 Meetings
- Stakeholder Organizations, Timelines, Draft Plan Outline

2/2011-5/2011: Working Group

- 6 Meetings
- Consensus Decision-making
- Executive Committee, Keep Austin Beautiful, Austin Parks Foundation, Texas Parks and Wildlife, Austin Invasive Species Coalition



Details to Date:

3/31/2011: House Bill 338: House Passed

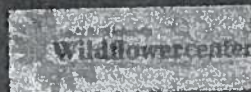
➤ **DISCLAIMER REQUIRED**

- “This plant list is only a recommendation and has no legal effect in the State of Texas. It is lawful to sell, distribute, import, or possess a plant on this list unless the Texas Department of Agriculture labels the plant as noxious or invasive on the department’s plant list.”

4/2011: Invitation of “Advisory Group”

➤ **PROPOSED**

- AISD, Austin Neighborhood Council, Texas Water Resource Institute, Hill Country Conservancy, LCRA, Native Plant Society of Texas, TDA, TXDOT, Texas Forest Service, Texas Invasive Plant and Pest Council, Texas Nursery and Landscape Association, Texas Research Institute for Environmental Studies, The Nature Conservancy, USFWS, UT-Austin



Details to Date:

6/3/2010: Memorandum (CUIR #304)

- Interdepartmental Working Group Established
- Invasive Plant Removal Projects (WPD, AWU, PARD, AE, PDR)
- Scope of Plan
- Hire a Consultant
- WPD Funding

Details to Date:

8/19/10: Interlocal agreement (LBJ Wildflower Center)

- Creation of stakeholder groups
- Facilitation of stakeholder process
- Development of the Plan

10/2010: Executive Committee Formed

- WPD, AWU, PARD, AE, PDR

Future Progress:

5/2011-8/2011: Plan Review

- Working Group, 6 Meetings
- Advisory Group, Written Feedback
- General Public, Submits Feedback on City Website

9/2011: Consensus on Revised Plan

- Areas of Non-Consensus decided by Executive Committee

9/2011: Final Plan Submitted (Approval)

- City Council

Contacts:

➤ City of Austin

Angela Hanson
City of Austin, Parks and Recreation Department
Angela.Hanson@ci.austin.tx.us
(512) 974-9551

➤ LBJ Wildflower Center

Matthew O'Toole
LBJWC, Ecosystem Design Group
motoole@wildflower.org
(512) 232-0134



COA Briefing (5/4/2011)

Where We Have Been:

What is an Invasive Species

- Executive Order 13112
- An "invasive species" is defined as a species that is nonnative (or alien) to the ecosystem under consideration and whose introduction causes or is likely to cause economic or environmental harm or harm to human health.

Why do we care?

- Reduction of native biodiversity and ecosystems
- Reduced stability, resilience, and carrying capacity
- Interference with ecosystem functions/processes (fire, nutrient flow, and flooding)
- Degradation of aquatic systems, obstruction of water flow
- Reduction of the value of streams, lakes and reservoirs
- Adverse impacts on human health
- Decreased real estate property value
- Loss of native seed bank

4/8/2010: Resolution CUIR #304 (City Council) provides,

- Invasive Species Definition (Executive Order 13112)
- Effect: Negative Economic, Social and Ecological Impacts
- Directive:
 - Develop an Invasive Plant Species Management Plan undesirable aquatic and terrestrial species.
 - Estimate annual costs to the City of invasive species removal/control, including volunteer efforts.
 - Project education and public awareness as a major component, including Citizen Science programs.
 - Create an Interdepartmental Invasive Species Management Working Group to facilitate plan development, incorporate plan assessment, and inventory of invasives.
 - Encourages departments to collaborate and form partnerships to prevent new introductions of invasive species.
 - Development and implementation of Integrated Pest Management programs.
 - Develop sustainable funding and find creative approaches for protecting and restoring the city's natural resources.

6/3/2010: Memorandum (CUIR #304)

- Interdepartmental Working Group
 - Plan scope and completion time frame
 - Identify budgetary requirements
 - Estimate staff time required for plan development
 - Participation by six departments
 - Achieve Short Term Objectives... list
- Current Invasive Plant Removal Projects (WPD, AWU, PARD, AE, PDR)
 - Twenty-one projects
 - WPD & AE: aquatic species; PARD & AWU: woody species
 - Cost to date: \$3,436,605.00
- Plan Scope:
 - City-wide Plan, Over-arching approach to IPM
 - Departments develop site specific plans
 - 10 year goals, 3 year work plan

- Estimated costs for plan implementation
 - Potential funding sources
 - Public input integral... Education, Public Awareness, Volunteerism
- Hire a Consultant
 - Expertise: Invasive Plant Management, Native Plant Restoration, Facilitation
 - Craft the Plan
 - One Year Time-frame
- WPD Funding

8/19/10: Interlocal Agreement between LBJWC and COA

- Services Related to Development of Invasive Plant Species Management Plan for City Managed Property
- Tasks:
 - Identification and Contact of Stakeholder Groups
 - Facilitation of Public Stakeholder Process
 - Development of the Invasive Species Management Plan

10/2010: Executive Committee (EC) Formed

- Members: WPD, AWU, PARD, AE, PDR

11/2010: EC Meetings

- Consensus: Identify Public Stakeholder Organizations, Identify Public Review Organizations, Process Plan, Timelines, and Draft Plan Outline

10/2020-11/2010: Invitation of Public Stakeholder Organizations to Consensus Process, "Working Group"

- Keep Austin Beautiful, Austin Parks Foundation, Texas Parks and Wildlife, Austin Invasive Species Coalition

2/2011-5/2011: "Working Group" Meets for Consensus Decision-making (6 Meetings)

- Working Group: WPD, AWU, PARD, AE, PDR, Keep Austin Beautiful, Austin Parks Foundation, Texas Parks and Wildlife, Austin Invasive Species Coalition

4/2011: Invitation of Public Review Organizations for Plan Review, "Advisory Group"

- **PROPOSED** - AISD, Austin Neighborhood Council, Texas Water Resource Institute (Center for Invasive Species Eradication), Hill Country Conservancy, LCRA, Native Plant Society of Texas, TDA, TXDOT, Texas Forest Service, Texas, Invasive Plant and Pest Council, Texas Nursery and Landscape Association, Texas State University System (Texas Research Institute for Environmental Studies), The Nature Conservancy, USFWS, UT-Austin

Where We Are:

5/2011: Development and Submittal of Draft of the Invasive Species Management Plan

- Introduction (Invasive Species Definition, Plan Development Process)
- Existing City Programs (Current Programs, Importance of Unified Plan)
- Regional Programs (Current Efforts, Impact, Areas of Overlap)
- Integrated Pest Management Process - Goals (Measurement, Standard Operating Procedures, Control/Implementation, Public Education, Coordination/Management of Plan, Prevention, Detection/Response, Control Measures and Management, Management Protocols, Restoration/Rehabilitation)
- Costs and Funding Sources
- Conclusions, Citations, Appendices

Where We Are Heading:

5/2011-8/2011: Plan Review

- Working Group Meets to Review and Revise Draft Plan (6 Meetings)
- Advisory Group Provides Written Feedback on Draft Plan
- General Public Submits Feedback on City Website
- LBJWC will Facilitate Stakeholder Meetings and Provide Appropriate Plan Changes

9/2011: Consensus Decisions on Revised Plan

- Areas of Non-Consensus Decided by Executive Committee

9/2011: Final Plan Submitted to City Council and Boards for Final Approval and Implementation