



MACIAS & ASSOCIATES, L.P.
LAND SURVEYORS

EXHIBIT " C "

(TEMPORARY STAGING AREA AND
MATERIALS STORAGE SITE)
SOUTH I-35 WATER/WASTEWATER PROGRAM
CIP # 6937.018

DESCRIPTION FOR PARCEL 4558.103TSAAMSS

LEGAL DESCRIPTION OF A 0.065 ACRE (2,819 SQUARE FOOT) TRACT OF LAND OUT OF THE TRINIDAD VARCINAS SURVEY NO. 535, ABSTRACT NO. 785 IN TRAVIS COUNTY, TEXAS, SAID 0.065 ACRE TRACT BEING A PORTION OF A 10.26 ACRE TRACT CONVEYED TO 3648, L.L.C., BY WARRANTY DEED DATED APRIL 15, 2005, AND RECORDED IN DOCUMENT NO. 2005065895 OF THE OFFICIAL PUBLIC RECORDS OF TRAVIS COUNTY, TEXAS; SAID 0.065 ACRE TRACT AS SHOWN ON THE ACCOMPANYING SKETCH, BEING MORE PARTICULARLY DESCRIBED BY METES AND BOUNDS AS FOLLOWS:

BEGINNING at a 60d nail set in the north line of said 10.26 acre tract, having Texas State Plane Grid Coordinate (Central Zone-4203, NAD83(CORS), U.S. Survey Feet,) values of N=10,016,396.79, E=3,096,549.31, for the northwest corner and **POINT OF BEGINNING** of this tract, from which a 1/2" iron rod with TxDOT aluminum cap found at the intersection of the east right-of-way line of Interstate Highway No. 35 (right-of-way width varies), with the north line of said 10.26 acre tract, same being the northeast corner of a 3.242 acre tract described in Document No. 2007024749 of the Official Public Records of Travis County, Texas, bears North 72°01'40" West, a distance of 40.01 feet;

THENCE South 72°01'40" East, with the north line of said 10.26 acre tract, a distance of 30.01 feet to a calculated point for the northeast corner of this tract, from which a 1/2" iron rod with plastic cap stamped "VARA" found at the northeast corner of said 10.26 acre tract, bears South 72°01'40" East, a distance of 245.11 feet;

THENCE over and across said 10.26 acre tract, the following six (6) courses:

1. South 16°35'58" West, a distance of 64.99 feet to a calculated angle point;
2. South 61°35'55" West, a distance of 28.28 feet to a calculated angle point;
3. North 73°24'02" West, a distance of 20.00 feet to a calculated point for the southwest corner of this tract;
4. North 16°35'58" East, 30 feet from and parallel with the east right-of-way line of said Interstate Highway No. 35 and the east line of said 3.242 acre tract, a distance of 45.95 feet to a 60d nail set for a corner in the west line of this tract;

5410 South 1st Street • Austin, Texas 78745 • (512) 442-7875 • Fax (512) 442-7876 • www.maciasworld.com

5. South 72°01'40" East, a distance of 10.00 feet to a 60d nail set for a corner in the west line of this tract;
6. North 16°35'58" East, a distance of 40.00 feet to the **POINT OF BEGINNING**, containing 0.065 acre (2,819 square feet) of land.

BEARING BASIS NOTE

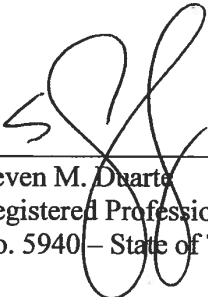
The bearings described herein are Texas State Plane Grid Bearings, Central Zone-4203, NAD 83(CORS). Project control points were established from City of Austin reference station "F-11-3001" having coordinate values of N=10,022,636.88, E=3,098,305.34 and "F-11-2001" having coordinate values of N=10,023,831.79, E=3,098,416.36. Distances shown herein are grid.

THE STATE OF TEXAS §
 § **KNOW ALL MEN BY THESE PRESENTS:**
COUNTY OF TRAVIS §

That I, Steven M. Duarte, a Registered Professional Land Surveyor, do hereby state that the above description is true and correct to the best of my knowledge and belief and that the property described herein was determined by a survey made on the ground under my direction and supervision.

WITNESS MY HAND AND SEAL at Austin, Travis County, Texas, this 7th day of July, 2009, A.D.

Macias & Associates, L.P.
5410 South 1st Street
Austin, Texas 78745
512-442-7875

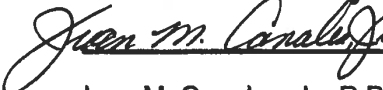

Steven M. Duarte
Registered Professional Land Surveyor
No. 5940 – State of Texas



REFERENCES

MAPSCO 2003 ,733-C&G
AUSTIN GRID NO. F-9
TCAD PARCEL ID NO. 04-5618-0210
MACIAS & ASSOCIATES, L.P., PROJECT NO. 396-03-08

Reviewed and Approved by
Landmark Surveying, LP

 Date 7-7-09

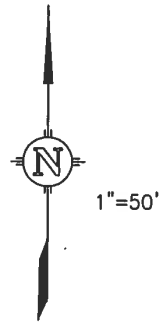
Juan M. Canales, Jr., R.P.L.S. No. 4453
Senior Project Manager

SKETCH TO ACCOMPANY LEGAL DESCRIPTION

LEGEND

- VARA 1/2" IRON ROD WITH PLASTIC CAP
STAMPED "VARA" FOUND
- TXDOT 1/2" IRON ROD W/TXDOT
ALUMINUM CAP FOUND
- 60D NAIL SET
- CALCULATED POINT
- () RECORD INFORMATION
- O.P.R.T.C.T. OFFICIAL PUBLIC RECORDS
OF TRAVIS COUNTY, TEXAS

TRINIDAD VARCINAS
SURVEY NO. 535
ABSTRACT NO. 785



INTERSTATE HIGHWAY NO. 35
NORTHBOND FRONTAGE ROAD
(RIGHT-OF-WAY VARIES)

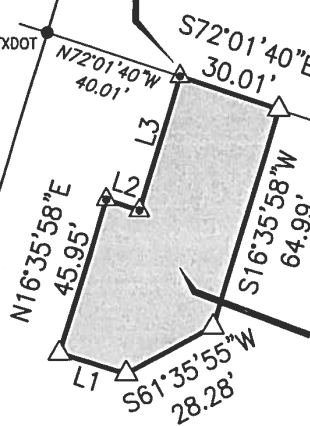
KING EDWARD IX, LLC
DOC. NO. 2005065891
O.P.R.T.C.T.
(REMAINDER PORTION
OF 10.59 ACRES)

POINT OF
BEGINNING
N=10,016,396.79
E= 3,096,549.31
GRID

HFH INVESTMENTS LP (PER TCAD)
DOC. NO. 2000089761
O.P.R.T.C.T.
(REMAINDER PORTION
OF 449.05 ACRES)

STATE OF TEXAS
DOC. NO. 2007024749
O.P.R.T.C.T.
(3.242 ACRES)

SUBJ. TO CONTROL OF ACCESS--
DOC. NO. 2007024749
O.P.R.T.C.T.



PARCEL 4558.103
TEMPORARY STAGING AREA AND
MATERIALS STORAGE SITE
0.065 AC.
2,819 SQ. FT.

3648, LLC.
DOC. NO. 2005065895
O.P.R.T.C.T.
(REMAINDER PORTION
OF 10.26 ACRES)

Line Table

NUMBER	Bearing	Distance
L1	N73°24'02"W	20.00'
L2	S72°01'40"E	10.00'
L3	N16°35'58"E	40.00'

BEARING BASIS:

THE COORDINATES AND BEARINGS
SHOWN HEREON ARE BASED ON THE
TEXAS STATE PLANE COORDINATE
SYSTEM, CENTRAL ZONE-4203,
NAD83(CORS). THE COORDINATES
WERE ESTABLISHED FROM CITY OF
AUSTIN REFERENCE POINT
"F-11-3001" HAVING COORDINATE
VALUES OF N=10,022,636.88,
E=3,098,305.34 AND CITY OF
AUSTIN REFERENCE POINT
"F-11-2001" HAVING COORDINATE
VALUES OF N=10,023,831.79,
E=3,098,416.36. DISTANCES SHOWN
HEREON ARE GRID.

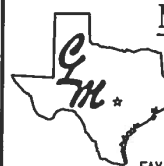
JULY 7, 2009

Steven M. Duarte
Registered Professional Land Surveyor
No. 5940 - State of Texas



DATE: 07-07-09
DRAWN BY: smd
MAI JOB NO.: 396-03-08
REFERENCE:

J:\JOBS\URS\396-04-08 SouthIH35\DWG\4558.103TSAAMSS.dwg



MACIAS & ASSOCIATES, L.P.
LAND SURVEYORS

5410 SOUTH 1ST STREET
AUSTIN, TEXAS 78745 PH. (512)442-7875
FAX (512)442-7876 EMAIL: CARMELO.MACIAS@MACSURV.COM