

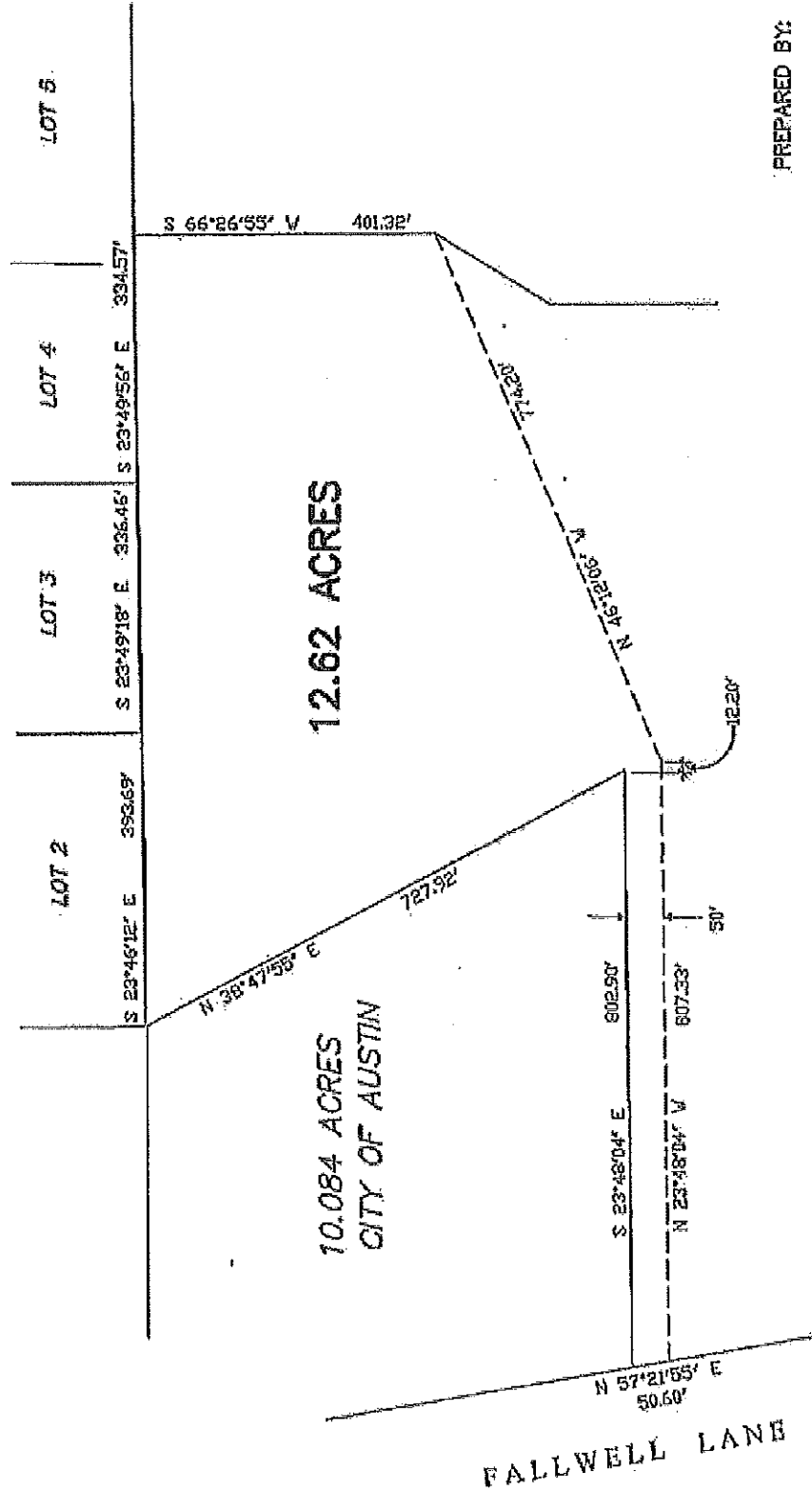
EXHIBIT "A" OF A PROPOSED 12.62 ACRE TRACT

TRAVIS COUNTY, TEXAS

RIVER VALLEY ESTATES



Scale 1" = 200'



PREPARED BY:



THIS PLAT IS BASED ON RECORD
INFORMATION AND NOT FROM AN ON
THE GROUND SURVEY

INFORMATION REGARDING THIS PROJECT
CONTACT SONNY POOLE ☎ 322-6442