

General Grounds Improvements for Barton Springs Pool

Austin, Texas

***Parks and Recreation Board & Environmental Board
Joint Committee***

August 15, 2011

Please Email Your Comments To:
bspmasterplan@ci.austin.tx.us



Larson Burns & Smith
Landscape Architects / Planners
1108 West Avenue
Austin, Texas 78701
PH: (512)476-1559
FAX:(512)476-8128



LARSON
BURNS
SMITH



- Tree Court Improvements
- Landscape Improvements
- South Trail Improvements
- Fencing Improvements
- Electrical Upgrades & Water Improvements

Tree Court Improvements

Goals:

- *Enhance main entry court to pool.*



Current view of the tree court

Tree Court Improvements

Goals:

- *Enhance main entry court to pool.*
- *Provide improved root environment for existing Pecan Trees.*



Current view of the tree court

Tree Court Improvements

Goals:

- *Enhance main entry court to pool.*
- *Provide improved root environment for existing Pecan Trees.*
- *Improve pedestrian walking surface and circulation.*
- *Incorporate Philosopher's Rock into new design.*

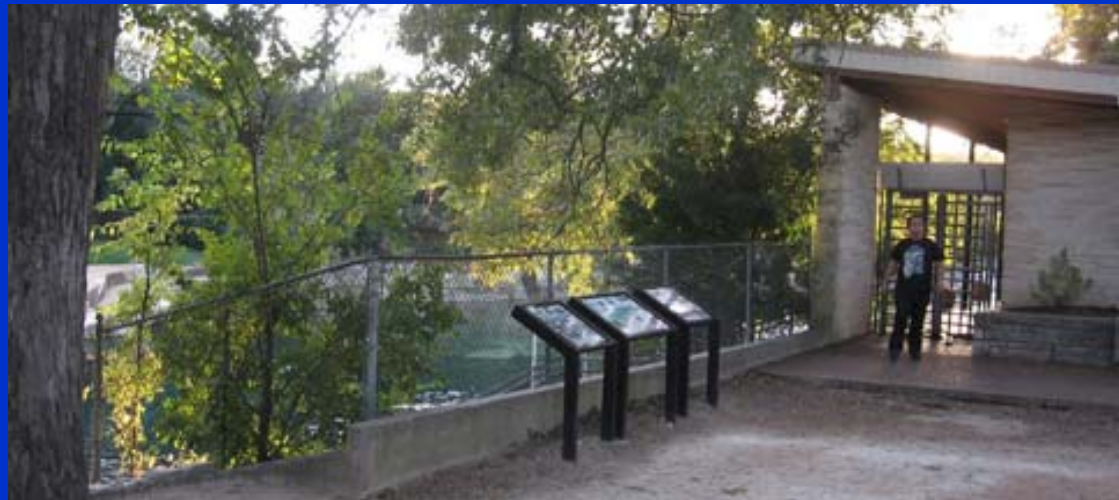


Current view of the tree court

Tree Court Improvements

Goals:

- *Enhance main entry court to pool.*
- *Provide improved root environment for existing Pecan Trees.*
- *Improve pedestrian walking surface and circulation.*
- *Incorporate Philosopher's Rock into new design.*
- *Provide seating and gathering areas for small groups.*
- *Provide overlook. Include interpretive signage.*



Tree Court Improvements

Goals:

- *Enhance main entry court to pool.*
- *Provide improved root environment for existing Pecan Trees.*
- *Improve pedestrian walking surface and circulation.*
- *Incorporate Philosopher's Rock into new design.*
- *Provide seating and gathering areas for small groups.*
- *Provide overlook.*
Include interpretive signage.
- *Maintain East - West Circulation*



Tree Court Improvements



Arborist's Recommendations for Tree Care:

**From Don Gardner's Tree Care Option Letter dated March 27, 2011*

- ***Overall Objective - "Reinvigorate the Root System of the Pecan Trees"***

Recommended Treatments Include:

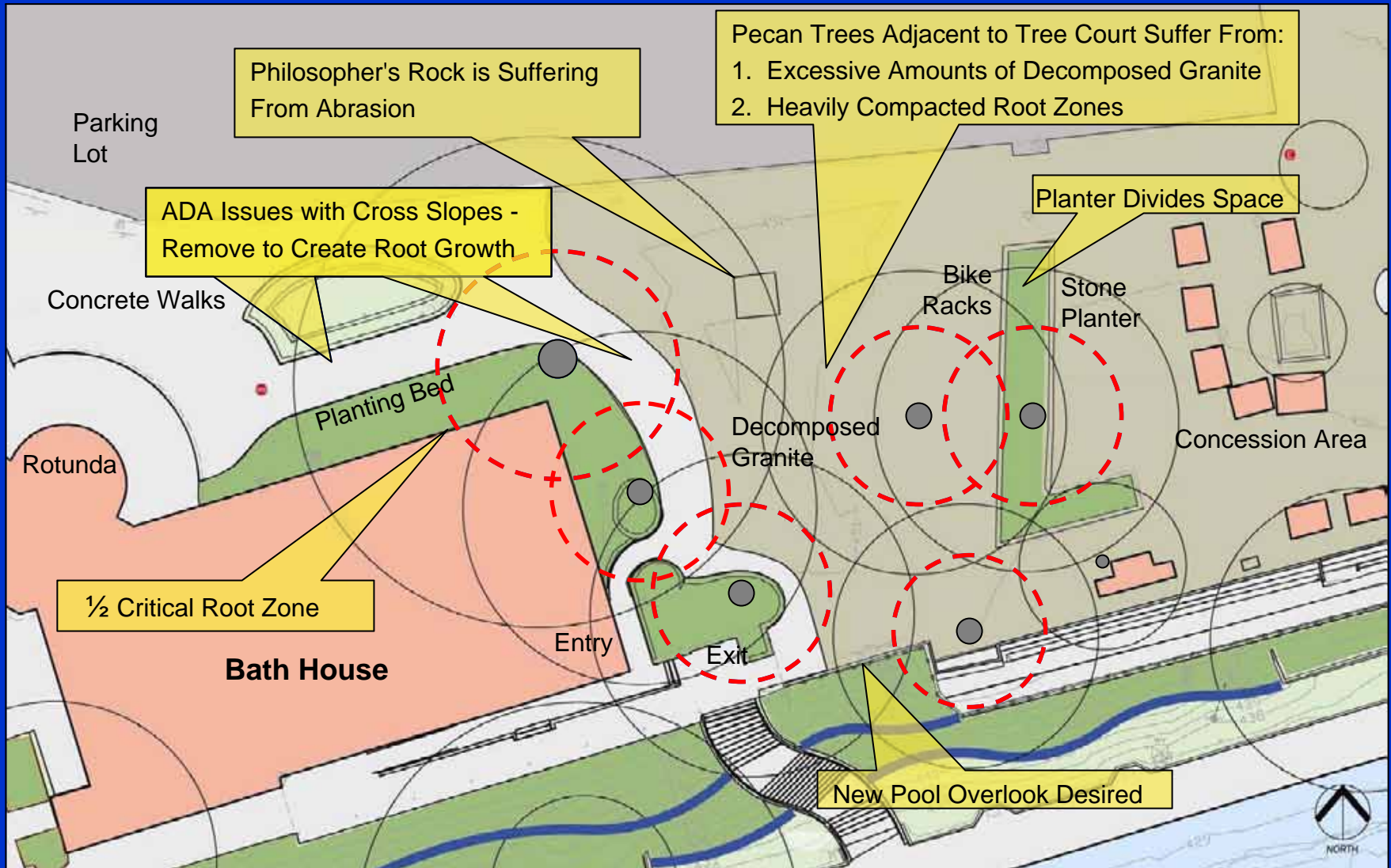
- 1. Remove the layer of Decomposed Granite (DG) approx. 12 inches deep***
- 2. Perform root invigoration work by using an air spade to loosen soil and adding compost***
- 3. Retain permanent planting and mulched areas as "dedicated tree root areas"***
- 4. These dedicated tree root areas should be a significant percentage (50%) of Tree Court area***
- 5. Dedicated tree root areas should be maintained regularly (compost, mulch and irrigation)***

Additional Recommendations Include:

- 1. Remove existing sidewalk that curves around the building at the entrance. The walk sits on one of the best areas to create root growth.***
- 2. Slightly elevate the new walk over the tree root area.***
- 3. Additional new trees (two to four) should be planted now for the future.***

Tree Court Improvements

Analysis Plan - Landscape Concept

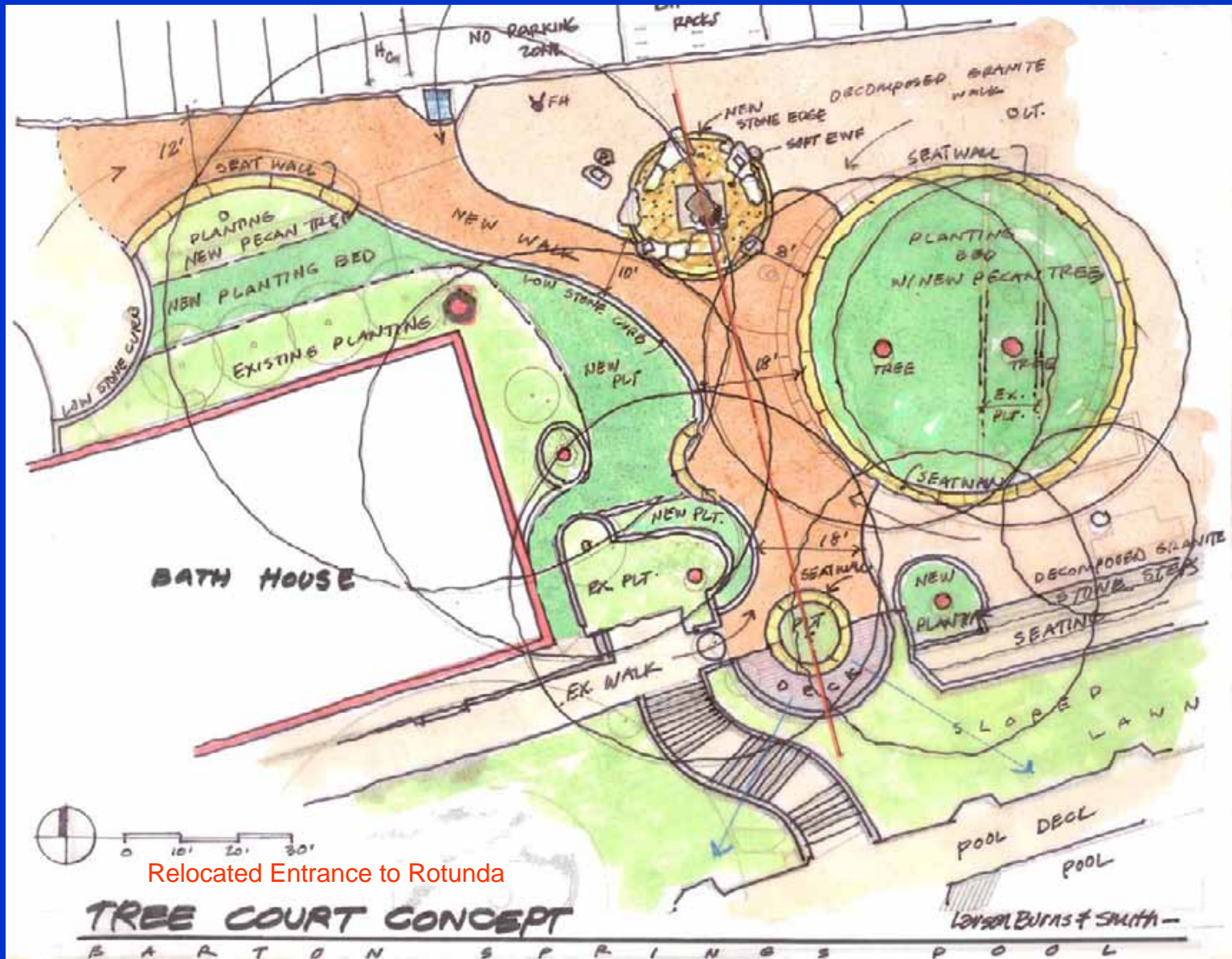


LARSON
BURNS
SMITH



Tree Court Improvements

LARSON
BURNS
SMITH



Tree Court Improvements

Existing West View Toward Entrance



Tree Court Improvements

Proposed West View Toward Entrance



Tree Court Improvements

View When Entry is Relocated



Tree Court Improvements

Existing View of Exit

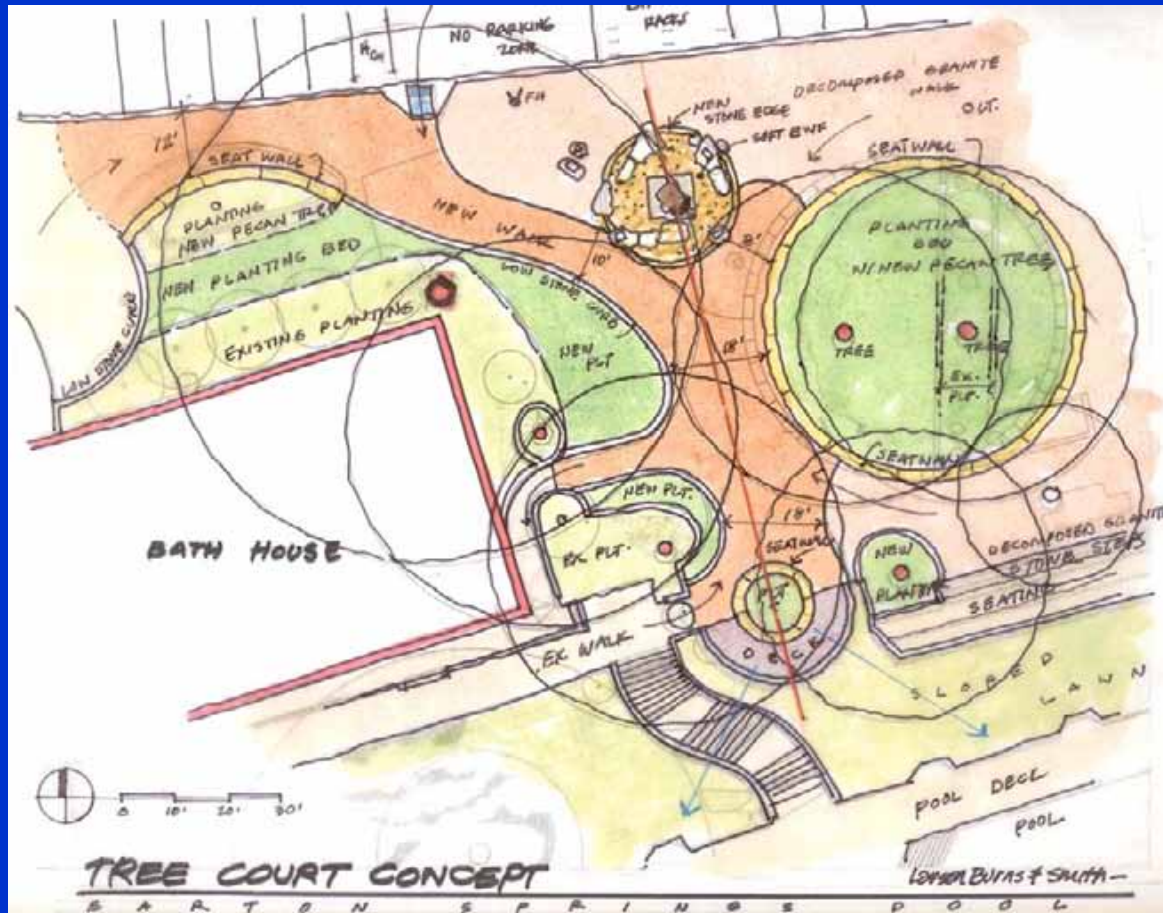


Tree Court Improvements

Proposed View of Exit with New Overlook



Tree Court Improvements



Existing Conditions

47%	DG	5150 SF
30%	Conc.	3300 SF
23%	Green	2550 SF

Proposed Landscape Concept

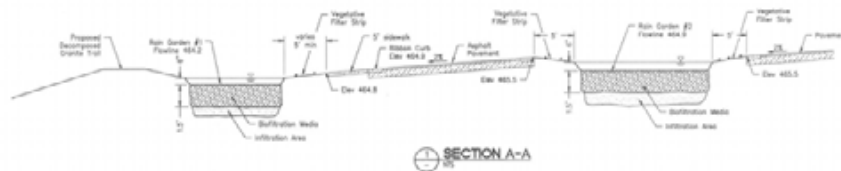
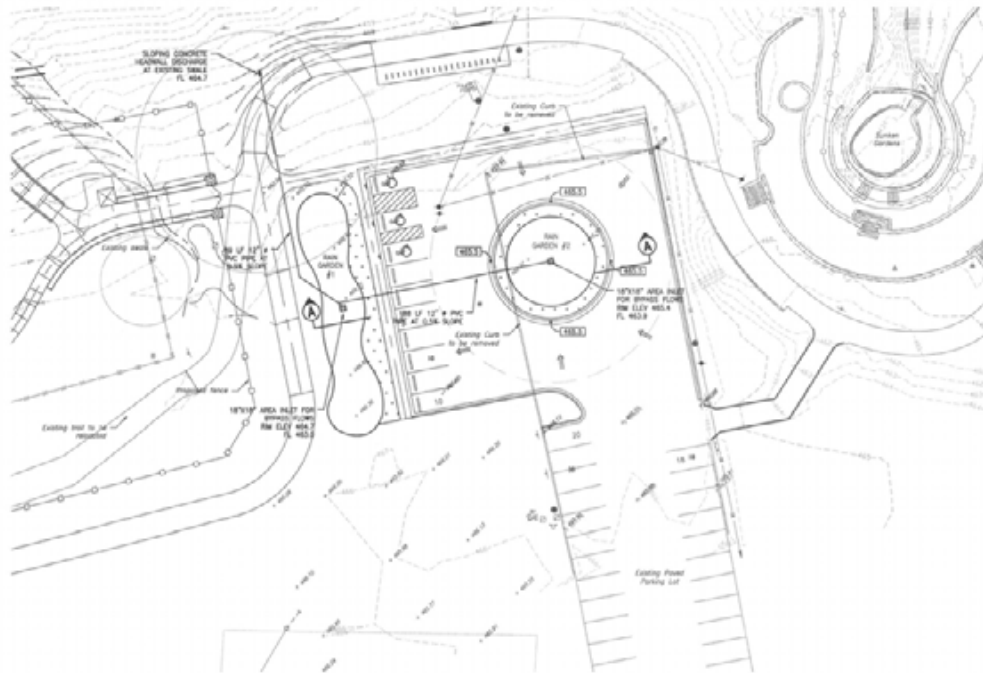
9%	DG	1000 SF
36%	Conc.	4000 SF
55%	Green	6000 SF

**LARSON
BURNS
SMITH**



General Grounds Landscape Improvements

LARSON
BURNS
SMITH



South Parking – Rain Garden

New Entrance Gate

RAIN GARDEN CALCULATIONS

Rain Garden Water Quality Control
with Vegetative Filter Strip (Detention)
(City of Austin 2.0.0, 1.0.7.7)
Rain Garden #1

Drainage Area (A _d) (Drainage Area B)	0.10 ac
Impervious Cover	100%
Catchment Depth (D _{catch}) (City of Austin 2.0.0, 1.0.7.7)	1.0 in
Vegetative Filter Strip	
Hydraulic Loading Rate (HLR)	0.01 cfs/ft width
Flow of Concentration	0.00
Runoff Coefficient	0.75
Rainfall Intensity	0.75 in/hr
Flow Rate (Q) (City of Austin 2.0.0, 1.0.7.7)	0.00 cfs
Minimum Width (W _{min}) (City of Austin 2.0.0, 1.0.7.7)	10 ft
Minimum Length (L _{min})	0.5
Width (W _{act}) (perpendicular to flow)	100 ft

RAIN GARDEN CALCULATIONS

Water Quality Volume (WQV) (City of Austin 2.0.0, 1.0.7.7)	860 ft ³
Detention Depth (D)	0.0
Hydraulic Conductivity (K)	0.00
Detention Time (T _d) (City of Austin 2.0.0, 1.0.7.7)	0.0 hr
Depth of Filter Media (L)	1.0 ft
Effective porosity (n _e)	0.0

Detention Volume (V _d) (City of Austin 2.0.0, 1.0.7.7)	860 ft ³
Detention Time (T _d) (City of Austin 2.0.0, 1.0.7.7)	0.0 hr
Detention Time (T _d) (City of Austin 2.0.0, 1.0.7.7)	0.0 hr
Detention Time (T _d) (City of Austin 2.0.0, 1.0.7.7)	0.0 hr

Rain Garden Width (W _{act}) (City of Austin 2.0.0, 1.0.7.7)	100 ft
Rain Garden Length (L _{act}) (City of Austin 2.0.0, 1.0.7.7)	7.2 ft

Detention Time	Detention Time (hr)	Area (ft ²)
Detention Time	0.0	0.0
Detention Time	0.0	0.0

Rain Garden #2

Drainage Area (A_d) (Drainage Area B) 0.10 ac || Impervious Cover | 100% |
| Catchment Depth (D_{catch}) (City of Austin 2.0.0, 1.0.7.7) | 1.0 in |

Vegetative Filter Strip	
Hydraulic Loading Rate (HLR)	0.01 cfs/ft width
Flow of Concentration	0.00
Runoff Coefficient	0.75
Rainfall Intensity	0.75 in/hr
Flow Rate (Q) (City of Austin 2.0.0, 1.0.7.7)	0.00 cfs
Minimum Width (W _{min}) (City of Austin 2.0.0, 1.0.7.7)	10 ft
Minimum Length (L _{min})	0.5
Width (W _{act}) (perpendicular to flow)	100 ft

RAIN GARDEN CALCULATIONS

Water Quality Volume (WQV) (City of Austin 2.0.0, 1.0.7.7)	860 ft ³
Detention Depth (D)	0.0
Hydraulic Conductivity (K)	0.00
Detention Time (T _d) (City of Austin 2.0.0, 1.0.7.7)	0.0 hr
Depth of Filter Media (L)	1.0 ft
Effective porosity (n _e)	0.0

Detention Volume (V _d) (City of Austin 2.0.0, 1.0.7.7)	860 ft ³
Detention Time (T _d) (City of Austin 2.0.0, 1.0.7.7)	0.0 hr
Detention Time (T _d) (City of Austin 2.0.0, 1.0.7.7)	0.0 hr
Detention Time (T _d) (City of Austin 2.0.0, 1.0.7.7)	0.0 hr

Rain Garden Width (W _{act}) (City of Austin 2.0.0, 1.0.7.7)	100 ft
Rain Garden Length (L _{act}) (City of Austin 2.0.0, 1.0.7.7)	7.2 ft

Detention Time	Detention Time (hr)	Area (ft ²)
Detention Time	0.0	0.0
Detention Time	0.0	0.0



STANSBERRY ENGINEERING CO.
www.stansberryengineering.com phone 737 / 750-8888
Texas Registered Engineering Firm # 625

PROFESSIONAL SEAL

THIS DOCUMENT IS REVIEWED
FOR THE PURPOSES OF THE
CITY OF AUSTIN, TEXAS
AND IS NOT TO BE USED FOR
CONSTRUCTION PURPOSES.

SHEET KEY MAP

PROJECT NAME & LOCATION

BARTON SPRINGS POOL
GENERAL GROUNDS IMPROVEMENTS

2101 BARTON SPRINGS ROAD
AUSTIN, TEXAS 78704

SUBMIT



CITY OF AUSTIN
PARKS & RECREATION
DEPARTMENT

919 WEST 38th ST.
AUSTIN, TEXAS 78705

PROJECT NO.

DESIGN BY: MS

REVIEWED BY: MS

DATE: 08/08/2011

SHEET TITLE:

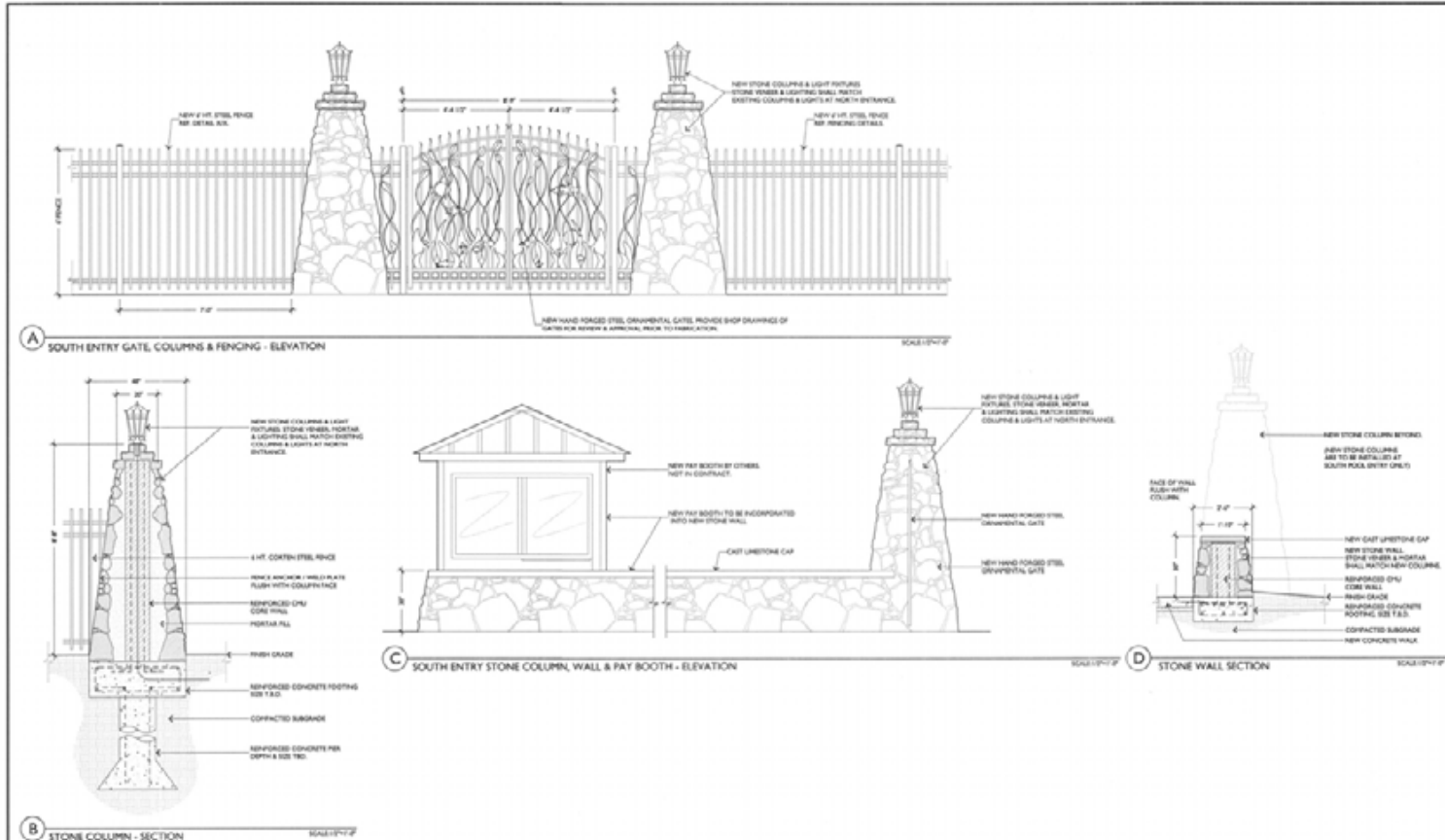
RAIN GARDEN PLAN

C10.2



General Grounds Landscape Improvements

LARSON
BURNS
SMITH



New Entrance Gate – Fence Detail
South Side

LARSON BURNS SMITH
ARCHITECTS
1100 West 11th Street, Suite 100
Austin, Texas 78703
TEL: 512.476.1100
FAX: 512.476.1101
WWW.LARSONBURNSMITH.COM

PROFESSIONAL SEAL
THIS DOCUMENT IS RELEASED FOR THE PURPOSE OF INTERIM REVIEW UNDER THE AUTHORITY OF BRIAN LARSON, L.A. #0137 OF 080511 NOT TO BE USED FOR CONSTRUCTION PURPOSES.

SHEET REF: 0001

PROJECT NAME & LOCATION
**BARTON SPRINGS POOL
GENERAL GROUNDS IMPROVEMENTS**
3181 BARTON SPRINGS ROAD
AUSTIN, TEXAS 78704

CITY OF AUSTIN
PARKS & RECREATION
DEPARTMENT
919 WEST 28 1/2 ST.
AUSTIN, TEXAS 78705

PROJECT NO.:
DRAWN BY: JBC
REVIEWED BY: BL
DATE: August 5, 2013

SHEET TITLE:
CONSTRUCTION DETAILS

C.H.S.

**LARSON
BURNS
SMITH**



**LARSON
BURNS
SMITH**



LARSON
BURNS
SMITH



LARSON
BURNS
SMITH

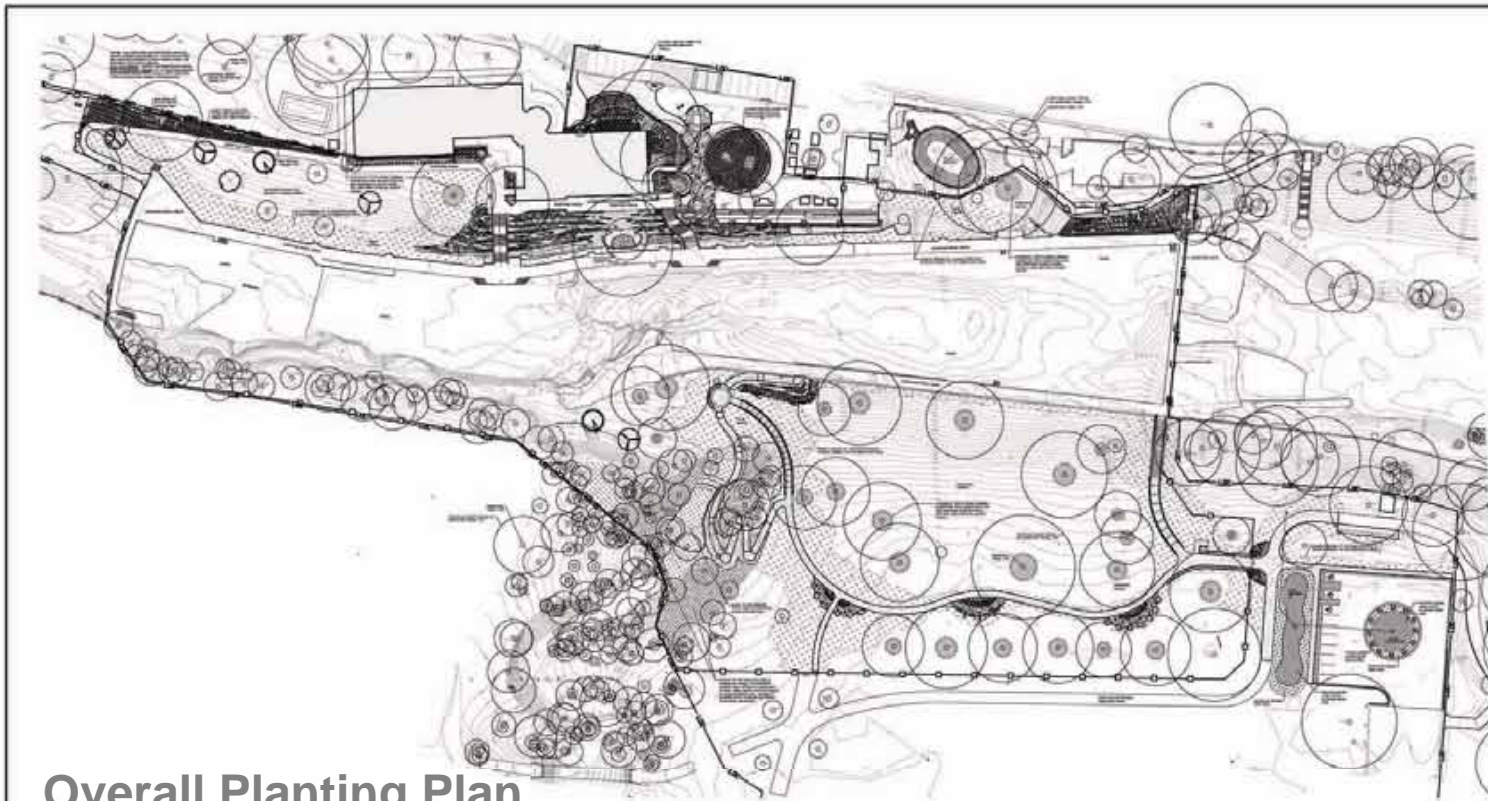


LARSON
BURNS
SMITH



General Grounds Landscape Improvements

LARSON
BURNS
SMITH



Overall Planting Plan

Plant Legend

	Native Pecan		Cedar Elm		Big Holly Grass		Nolina		Cedar Sage		Verbena
	Bar Oak		Yucca Holly		Gulf Holly Grass		Pride of Barbados		Pink Skullcap		White Gaura
	Live Oak		Texas Redbud		Dwarf Yucca Holly		Yellow Bird of Paradise		Turk's Cap		Silver Ponyfoot
	Chinquapin Oak		Blackham Yucca		Mexican Bush Sage		Twist Leaf Yucca		Dianthus		Texas Bonny
			Flame Tree		Texas Shrub		Sak Leaf Yucca		Bluebonnet Daisy		Four Nerve Daisy
					Copper Canyon Daisy		Red Yucca		Zinnia		Mountain Fox
					Red Autumn Sage		St. Color Iris		Pell Aster		Trading Rosemary
					White Autumn Sage		Island Sea Cross		Rock Penstemon		

LARSON
BURNS
SMITH

THIS DOCUMENT IS RELEASED
FOR THE PURPOSE OF INTERIM
REVIEW UNDER THE AUTHORITY
OF BRIAN LARSON, L.A.
#137 OF 08/07/11
NOT TO BE USED FOR
CONSTRUCTION PURPOSES.

BARTON SPRINGS POOL
GENERAL GROUNDS IMPROVEMENTS
2101 BARTON SPRINGS ROAD
AUSTIN, TEXAS 78704

CITY OF AUSTIN
PARKS & RECREATION
DEPARTMENT
919 WEST 28 1/2 ST.
AUSTIN, TEXAS 78705

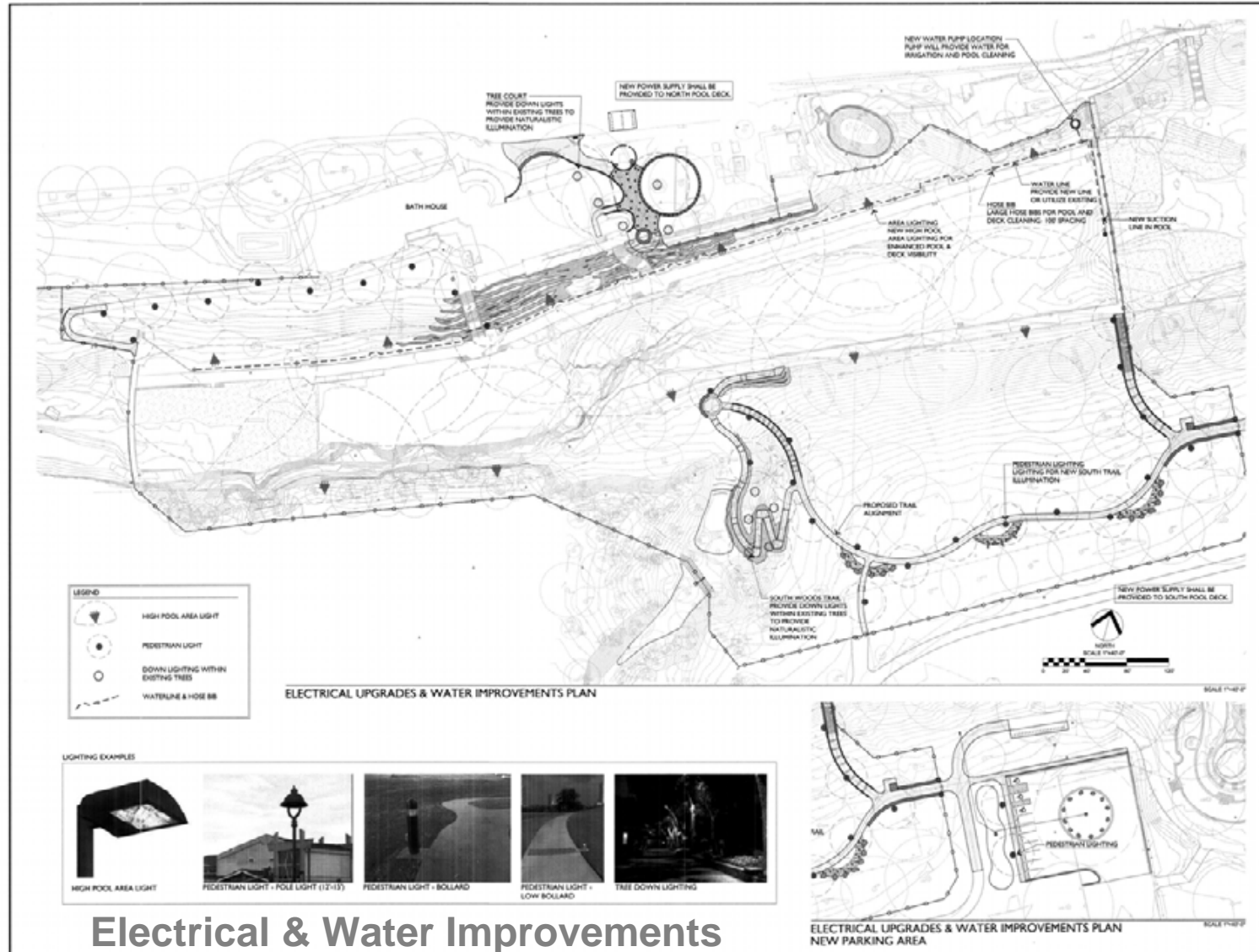
PROJECT NO.
DRAWN BY: JC
CHECKED BY: BS
DATE: 08/07/11

OVERALL LANDSCAPE PLAN



General Grounds Landscape Improvements

LARSON
BURNS
SMITH



LARSON BURNS SMITH
ARCHITECTS
1000 West 11th
Austin, Texas 78703
P: 512.476.1111
F: 512.476.1112

PROFESSIONAL SEAL
THIS DOCUMENT IS RELEASED
FOR THE PURPOSE OF INTERIM
REVIEW UNDER THE AUTHORITY
OF BRIAN LARSON, L.L.A.
#1357 OF 08/05/11
NOT TO BE USED FOR
CONSTRUCTION PURPOSES.

SHEET KEY 040

PROJECT NAME & LOCATION
BARTON SPRINGS POOL
GENERAL GROUNDS IMPROVEMENTS
2151 BARTON SPRINGS ROAD
AUSTIN, TEXAS 78704

AUSTIN
RECREATION
CITY OF AUSTIN
PARKS & RECREATION
DEPARTMENT
919 WEST 28th ST.
AUSTIN, TEXAS 78705

PROJECT NO.
DRAWN BY: JBC
REVIEWED BY: ML
DATE: August 1, 2011

SHEET TITLE
ELECTRICAL UPGRADES &
WATER IMPROVEMENTS



Barton Spring Pool South Drainage

RAIN EVENT SPRING 2011



FROM THE
SOUTH GROUNDS



THROUGH
THE ENTRANCE



DOWN THE SLOPE



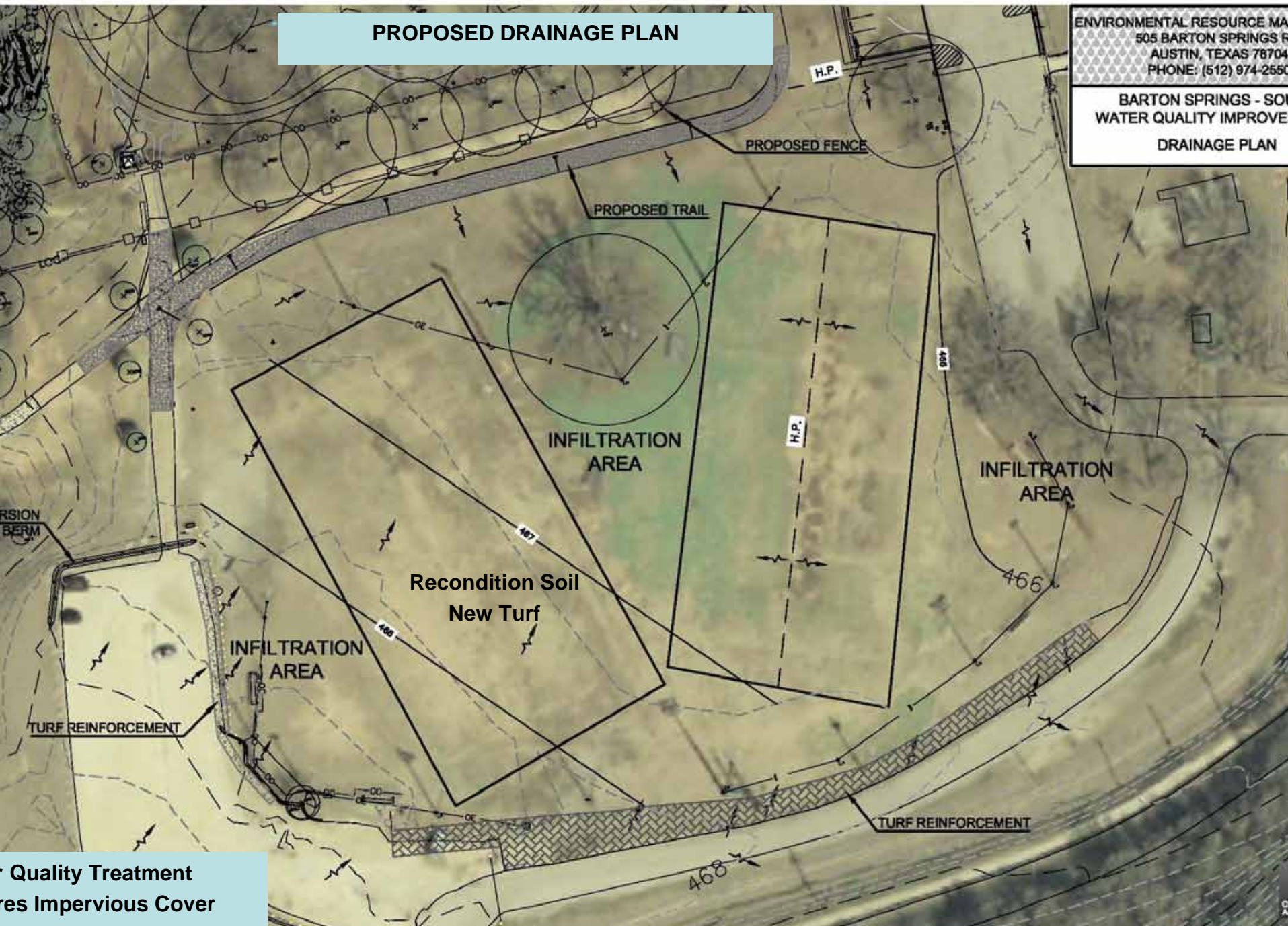
INTO THE POOL



PROPOSED DRAINAGE PLAN

ENVIRONMENTAL RESOURCE MA
505 BARTON SPRINGS R
AUSTIN, TEXAS 78704
PHONE: (512) 974-2550

BARTON SPRINGS - SO
WATER QUALITY IMPROVE
DRAINAGE PLAN



Quality Treatment
Impervious Cover

Barton Spring Pool South Drainage Proposed Trail Typical Section

