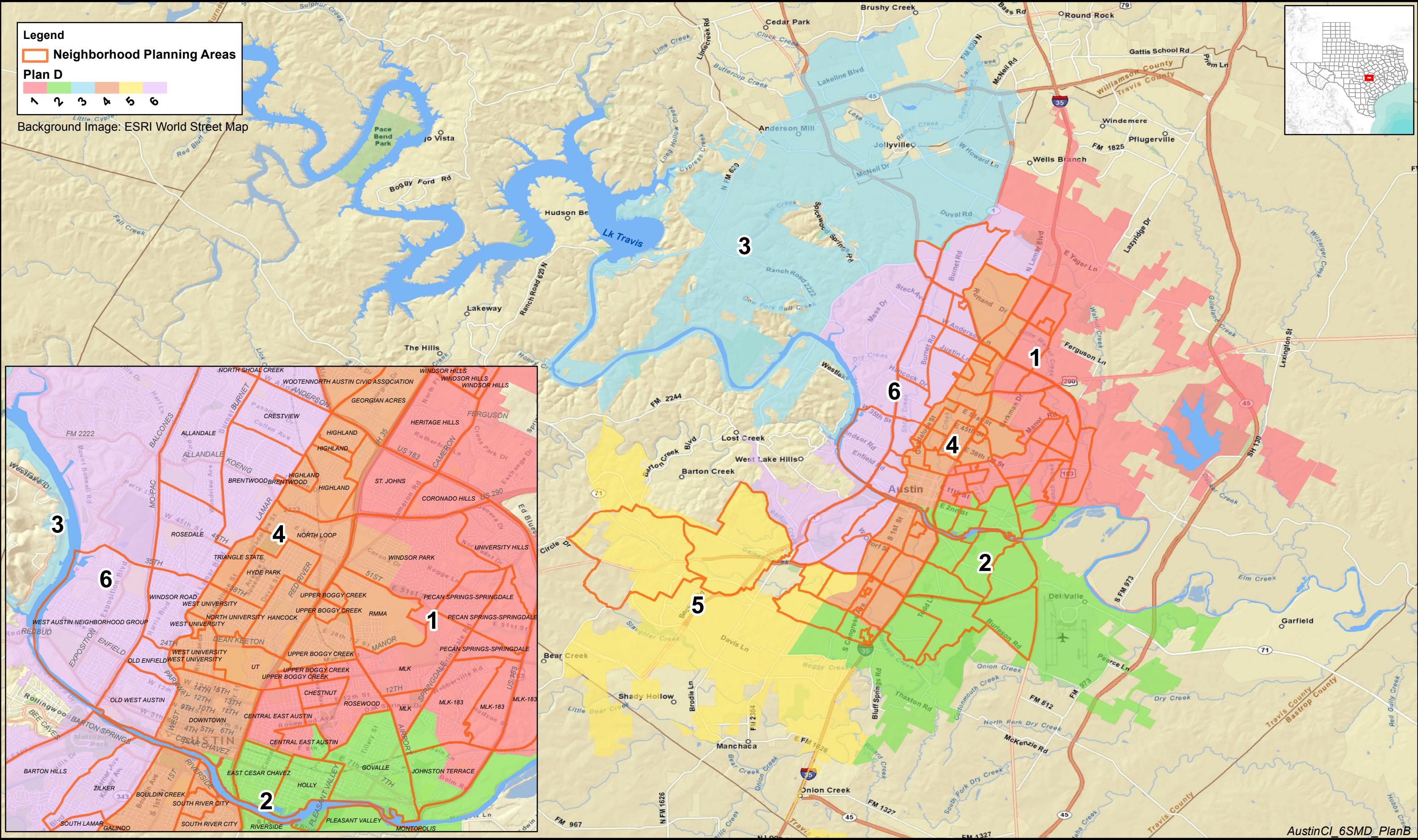


City of Austin - 6 Single Member Districts Plan D



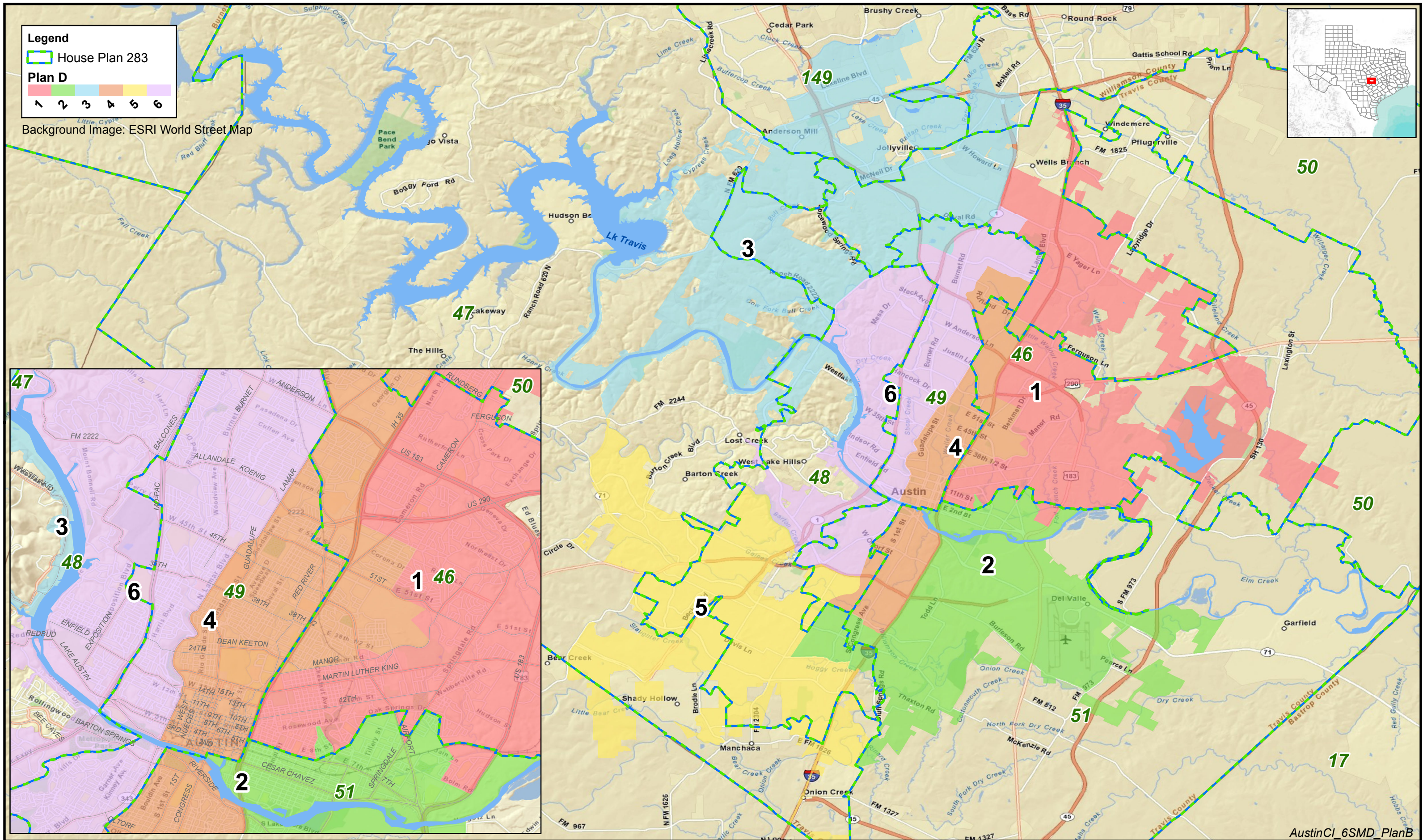


0 1.25 2.5 5 Miles

Coordinate System: GCS North American 1983;
Datum: North American 1983; Created: 6/6/2011

City of Austin - 6 Single Member Districts Plan D - With Neighborhood Planning Areas

© 2011 Bickerstaff Heath Delgado Acosta LLP
Data Source: Roads, Water and other
features obtained from the 2010
Tiger/line files, U.S. Census Bureau



City of Austin Test Plan

AA_Halt_centvert - Plan D

Summary 2010 Census Total and Voting Age Population

District	Persons	Deviation	Hispanic % of Total Population	Non-Hispanic Anglo % of Total Population	Non-Hispanic Black % of Total Population	Non-Hispanic Asian % of Total Population	Non-Hispanic Other % of Total Population
1	128,582	-3.16%	46.37%	24.18%	21.88%	5.55%	2.03%
2	135,433	2.00%	67.00%	20.77%	8.58%	2.04%	1.61%
3	128,603	-3.14%	13.53%	68.11%	3.73%	11.88%	2.74%
4	139,265	4.89%	37.88%	47.64%	5.35%	6.84%	2.29%
5	135,640	2.16%	26.81%	61.72%	3.51%	5.52%	2.44%
6	129,145	-2.74%	16.69%	71.89%	3.30%	5.85%	2.26%
Totals	796,668		34.95%	48.92%	7.66%	6.24%	2.22%

Ideal Size = 796,668 / 6 = 132,778 per district.

Total Maximum Deviation = 4.89% - (-3.16%) = 8.05%

Some percentages may be subject to rounding error.

District	Total VAP*		Hispanic % of Total VAP	Non-Hispanic Anglo % of Total VAP	Non-Hispanic Black % of Total VAP	Non-Hispanic Asian % of Total VAP	Non-Hispanic Other % of Total VAP
1	93,846		40.39%	29.41%	22.57%	5.92%	1.72%
2	98,263		60.98%	26.03%	8.91%	2.52%	1.56%
3	99,710		12.35%	70.96%	3.76%	10.84%	2.08%
4	117,251		32.28%	52.92%	4.95%	7.68%	2.17%
5	103,670		23.99%	65.33%	3.46%	5.33%	1.88%
6	107,199		14.95%	74.06%	3.17%	5.91%	1.92%
Totals	619,939		30.47%	53.73%	7.50%	6.41%	1.90%

*Voting Age Population

Some percentages may be subject to rounding error.

City of Austin Test Plan

AA_Halt_centvert - Plan D

Detailed 2010 Census Total and Voting Age Population

District	Persons	Ideal Size	Deviation	Hispanic	% of Total Hispanic Population	Anglo	% of Total Anglo Population	Black	% of Total Black Population	American Indian	% of Total American Indian Population	Asian	% of Total Asian Population	Hawaiian-Pacific Islander	% of Total Hawaiian-Pacific Islander Population	Other	% of Total Other Population	Two or More	% of Total Two or More Population
1	128,582	132,778	-3.16%	59,622	46.37%	31,085	24.18%	28,133	21.88%	253	0.20%	7,135	5.55%	58	0.05%	232	0.18%	2,061	1.60%
2	135,433	132,778	2.00%	90,744	67.00%	28,131	20.77%	11,619	8.58%	361	0.27%	2,759	2.04%	74	0.05%	238	0.18%	1,510	1.11%
3	128,603	132,778	-3.14%	17,400	13.53%	87,591	68.11%	4,803	3.73%	336	0.26%	15,283	11.88%	77	0.06%	230	0.18%	2,877	2.24%
4	139,265	132,778	4.89%	52,749	37.88%	66,351	47.64%	7,450	5.35%	320	0.23%	9,532	6.84%	49	0.04%	234	0.17%	2,580	1.85%
5	135,640	132,778	2.16%	36,370	26.81%	83,720	61.72%	4,761	3.51%	389	0.29%	7,481	5.52%	96	0.07%	269	0.20%	2,558	1.89%
6	129,145	132,778	-2.74%	21,557	16.69%	92,844	71.89%	4,265	3.30%	343	0.27%	7,556	5.85%	49	0.04%	246	0.19%	2,284	1.77%
Totals	796,668			278,442	34.95%	389,722	48.92%	61,031	7.66%	2,002	0.25%	49,746	6.24%	403	0.05%	1,449	0.18%	13,870	1.74%

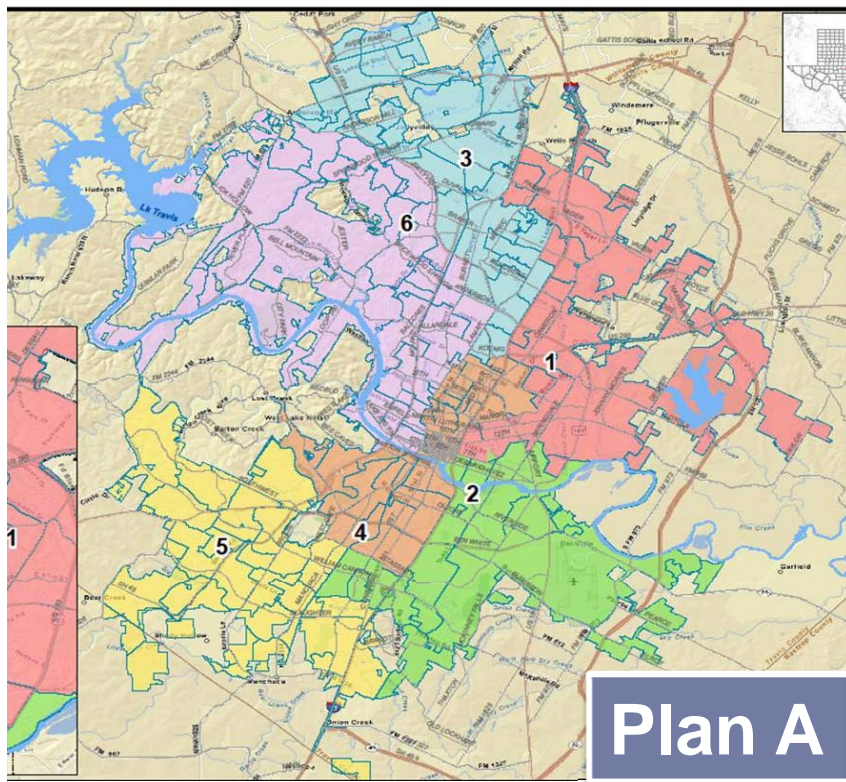
Ideal Size = 796,668 / 6 = 132,778 per district.

Some percentages may be subject to rounding error.

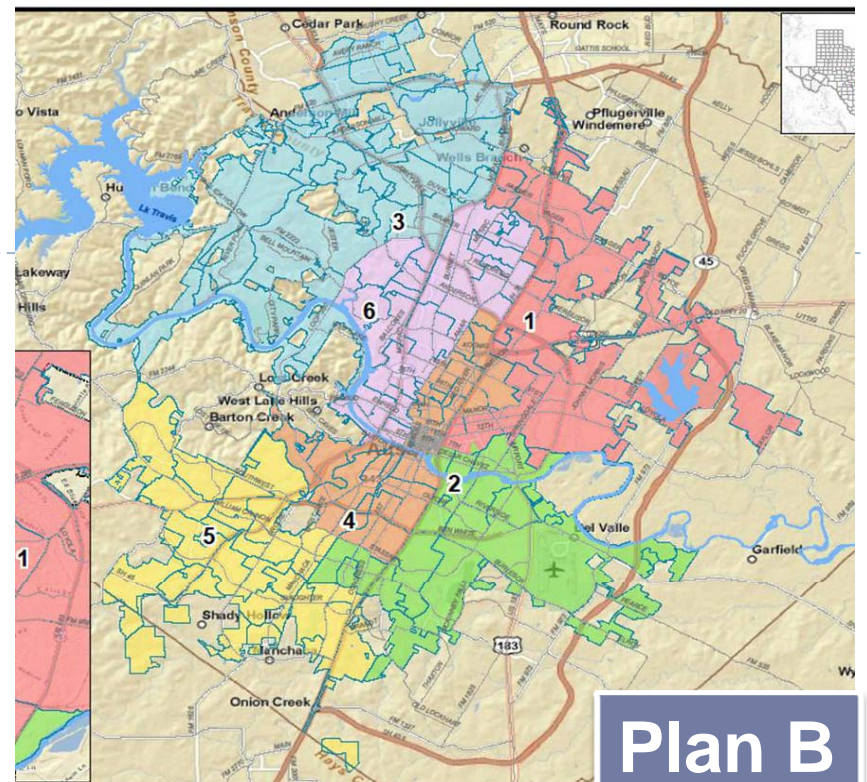
District	Total VAP*			Hispanic VAP	% of Total Hispanic VAP	Anglo VAP	% of Total Anglo VAP	Black VAP	% of Total Black VAP	American Indian VAP	% of Total American Indian VAP	Asian VAP	% of Total Asian VAP	Hawaiian-Pacific Islander VAP	% of Total Hawaiian-Pacific Islander VAP	Other VAP	% of Total Other VAP	Two or More VAP	% of Total Two or More VAP
1	93,846			37,904	40.39%	27,603	29.41%	21,178	22.57%	195	0.21%	5,552	5.92%	50	0.05%	144	0.15%	1,224	1.30%
2	98,263			59,925	60.98%	25,581	26.03%	8,751	8.91%	295	0.30%	2,478	2.52%	62	0.06%	152	0.15%	1,026	1.04%
3	99,710			12,311	12.35%	70,753	70.96%	3,750	3.76%	277	0.28%	10,813	10.84%	56	0.06%	163	0.16%	1,577	1.58%
4	117,251			37,844	32.28%	62,053	52.92%	5,803	4.95%	286	0.24%	9,004	7.68%	49	0.04%	179	0.15%	2,033	1.73%
5	103,670			24,874	23.99%	67,732	65.33%	3,592	3.46%	318	0.31%	5,527	5.33%	75	0.07%	174	0.17%	1,385	1.34%
6	107,199			16,025	14.95%	79,391	74.06%	3,396	3.17%	294	0.27%	6,335	5.91%	48	0.04%	184	0.17%	1,527	1.42%
Totals	619,939			188,883	30.47%	333,113	53.73%	46,470	7.50%	1,665	0.27%	39,709	6.41%	340	0.05%	996	0.16%	8,772	1.41%

*Voting Age Population

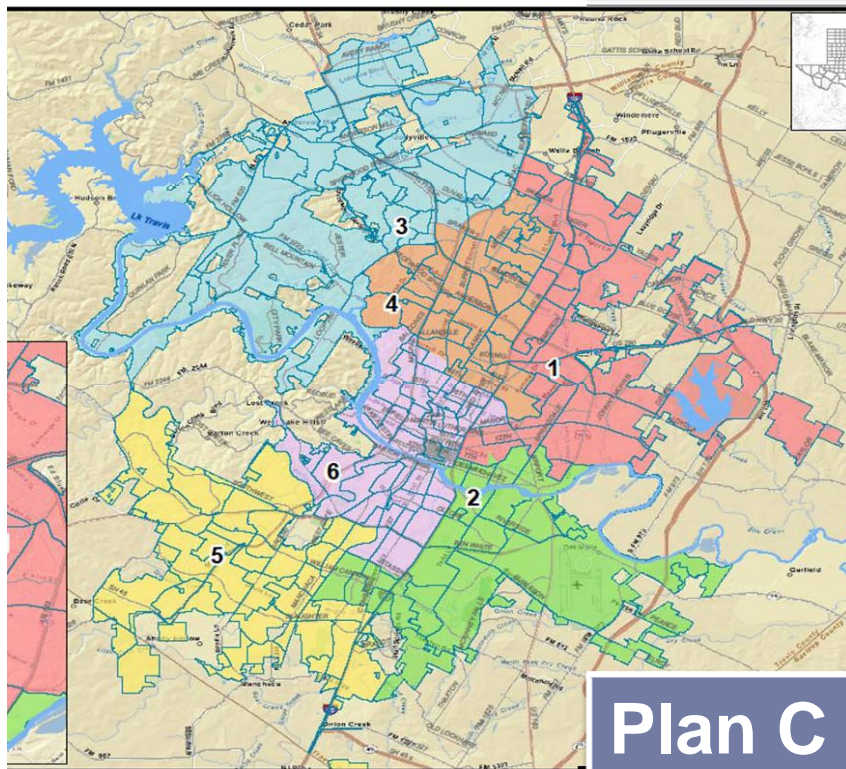
Some percentages may be subject to rounding error.



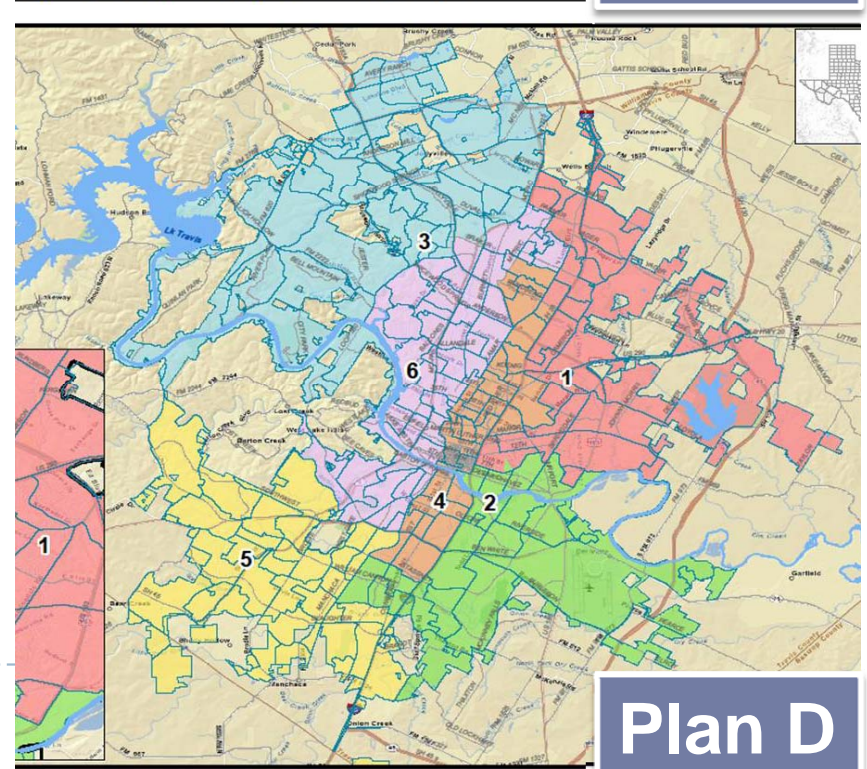
Plan A



Plan B



Plan C



Plan D