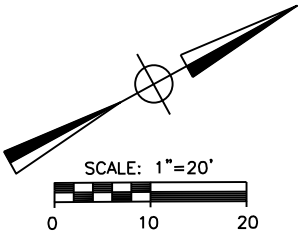
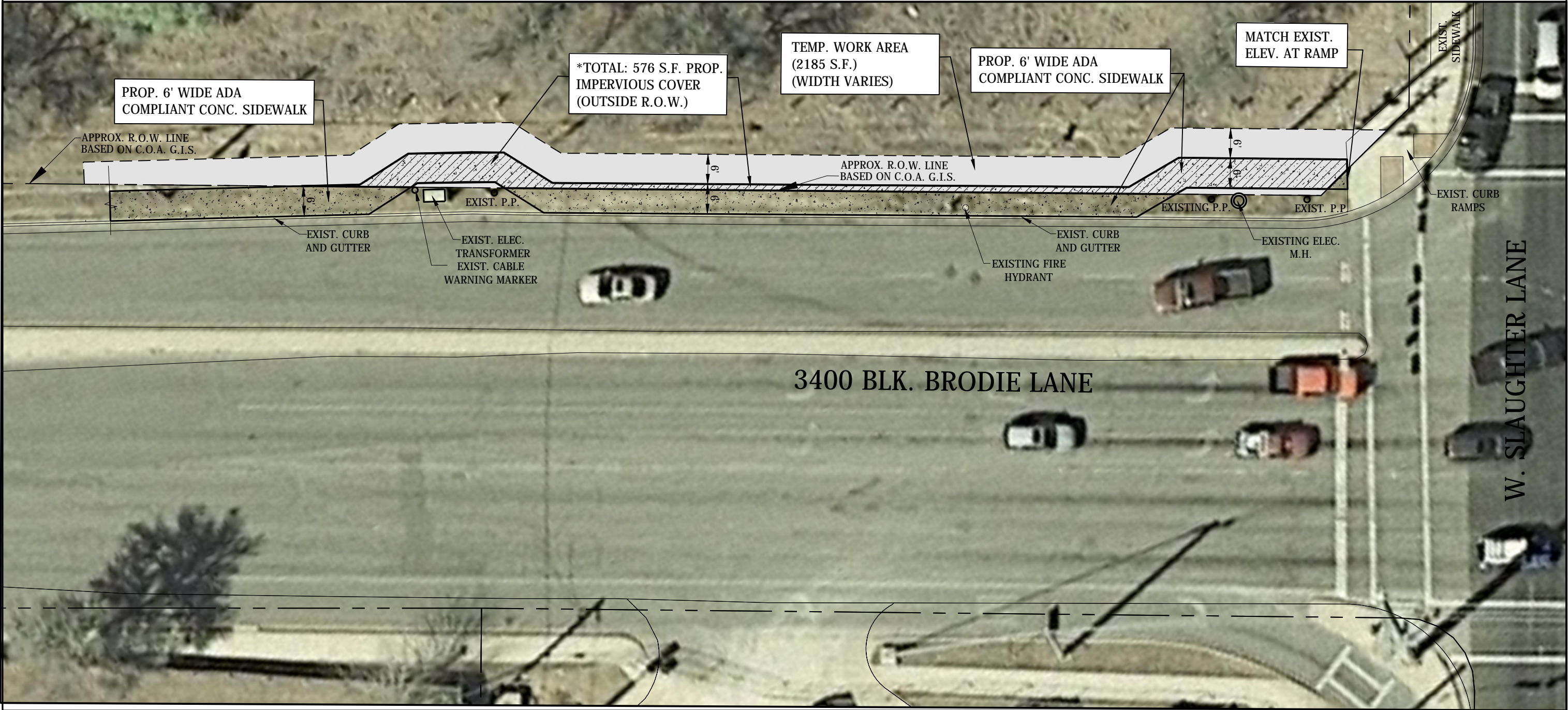


LEGEND

- PROP. 6' WIDE CONCRETE SIDEWALK
- PROP. 6' SIDEWALK OUTSIDE R.O.W.
- TEMPORARY WORK AREA.



\*NOTE:  
THE R.O.W. LOCATION SHOWN IS BASED ON GIS DATA FROM THE CITY OF AUSTIN AND NOT AN ACTUAL BOUNDARY SURVEY. AN ACTUAL ON THE GROUND SURVEY WILL BE REQUIRED PRIOR TO CONSTRUCTION IN ORDER TO CONFIRM THE ACTUAL IMPERVIOUS COVER QUANTITY OUTSIDE THE R.O.W.



\*ALL RESPONSIBILITY FOR THE ADEQUACY OF THESE PLANS REMAINS WITH THE ENGINEER/ARCHITECT/LANDSCAPE ARCHITECT (AS APPLIES) WHO PREPARED THEM. IN APPROVING THESE PLANS, THE CITY OF AUSTIN MUST RELY UPON THE ADEQUACY OF THE WORK OF THE ENGINEER/ARCHITECT/LANDSCAPE ARCHITECT.\*

I CERTIFY THAT THESE ENGINEERING DOCUMENTS ARE COMPLETE, ACCURATE AND ADEQUATE FOR THEIR INTENDED PURPOSES, INCLUDING CONSTRUCTION, BUT ARE NOT AUTHORIZED FOR CONSTRUCTION PRIOR TO FORMAL CITY APPROVAL.



305 East Huntland Drive  
Suite 200  
Austin, Texas 78752  
p: 512.453.0767  
f: 512.453.1734  
TBPE REGISTRATION # F-1416

NO.	DATE	DESCRIPTION	BY

0

The bar above measures one inch on the original drawing. Adjust scales accordingly.

SIDEWALK LAYOUT  
BRODIE LANE AT W. SLAUGHTER LN.

CITY OF AUSTIN  
AUSTIN ADA SIDEWALKS GROUP 10

DATE: 10-06-11  
JOB NO: 02363C  
FILE: 1

C100  
1 OF 1