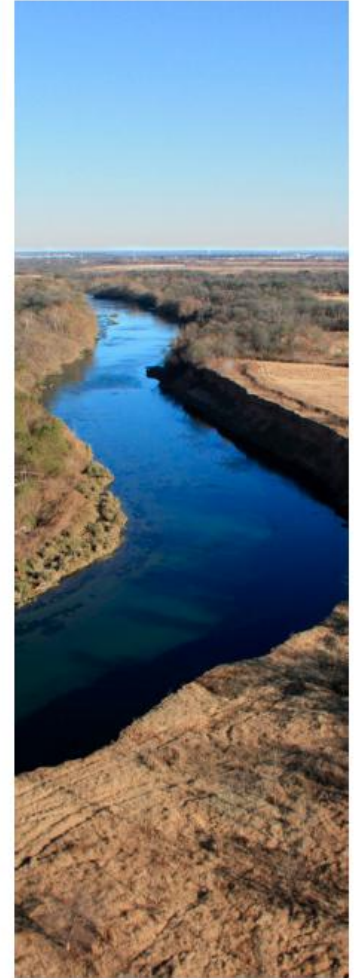
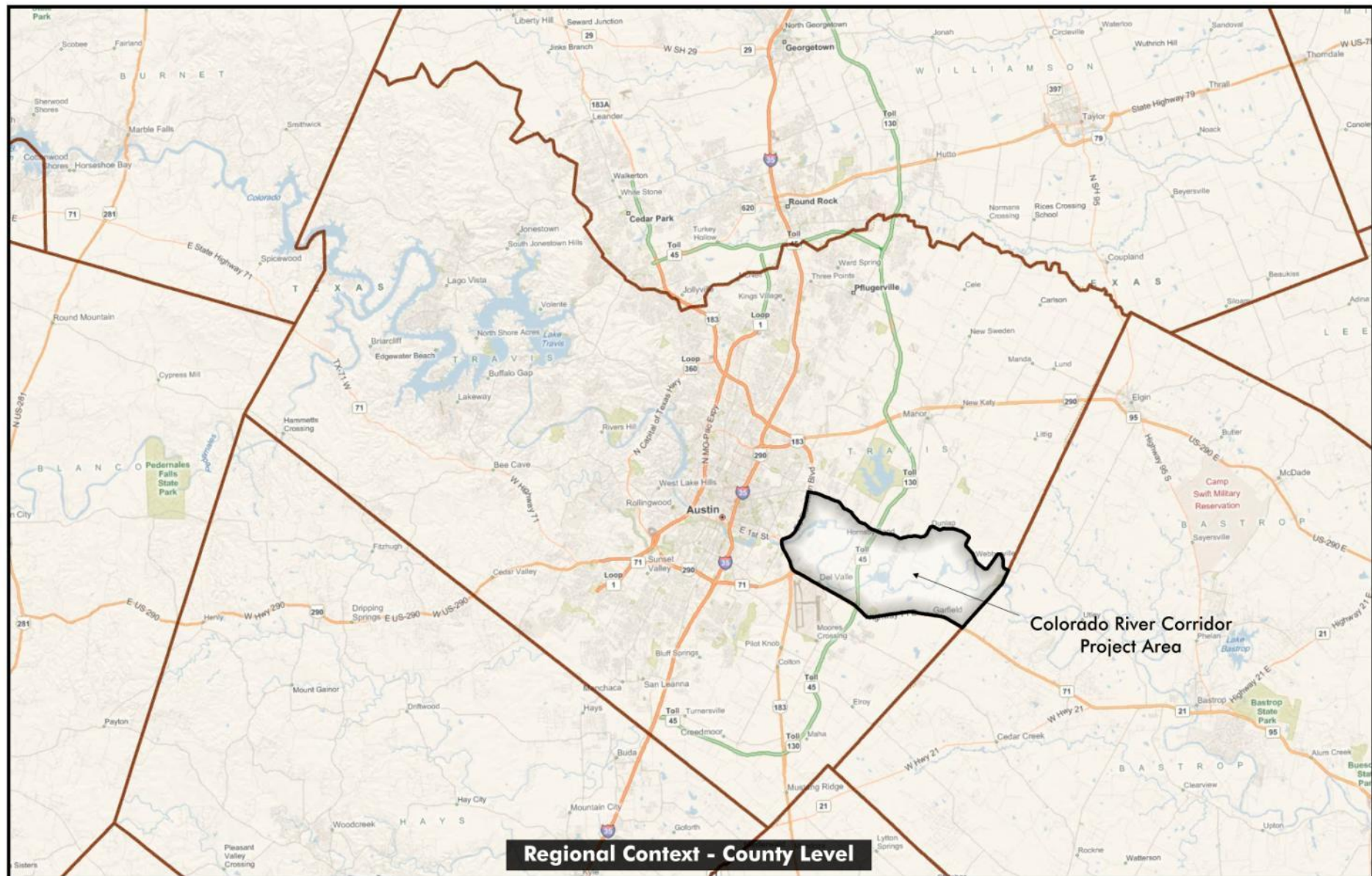


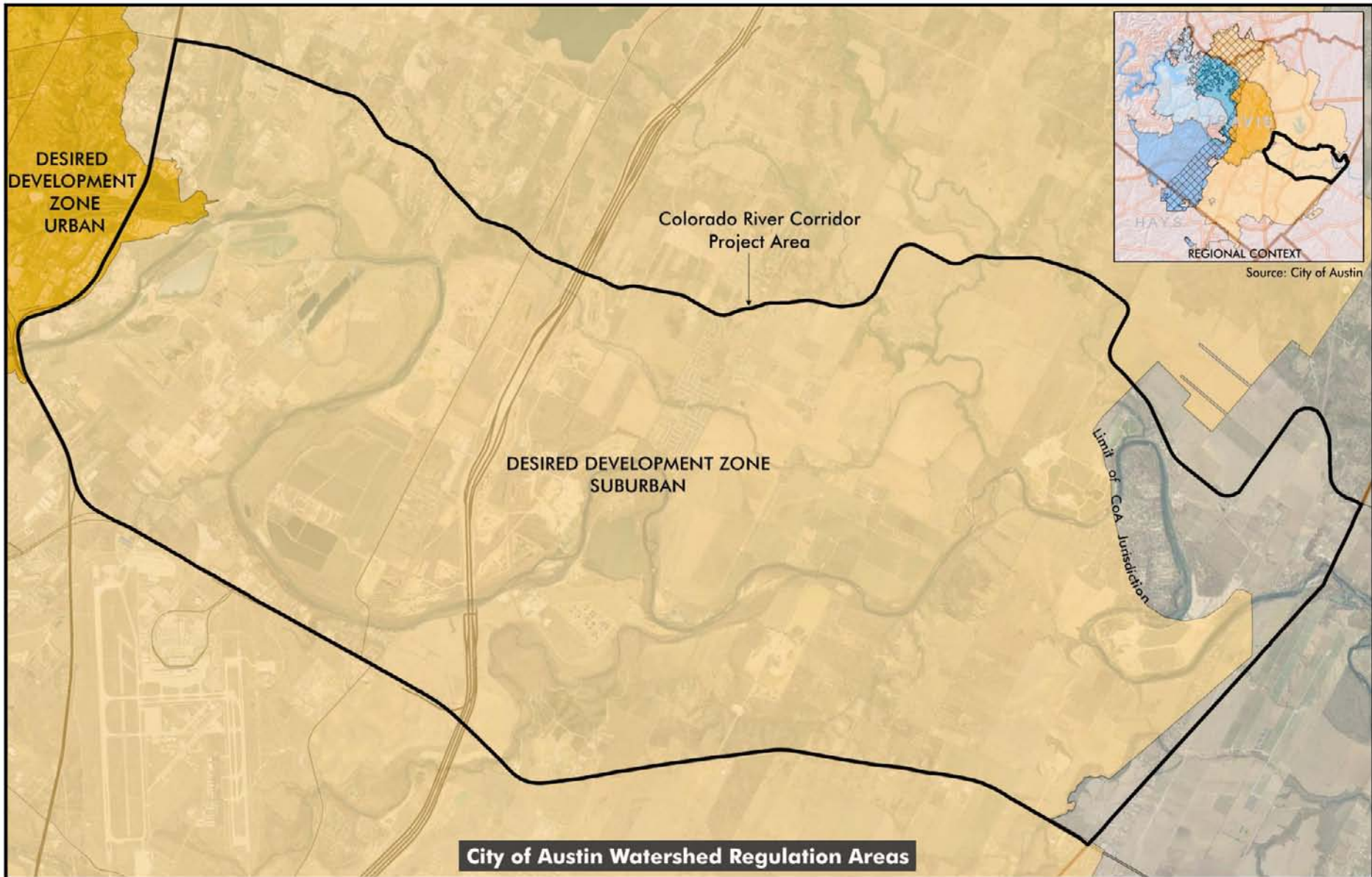
Colorado River Corridor Plan

A Sustainable Future



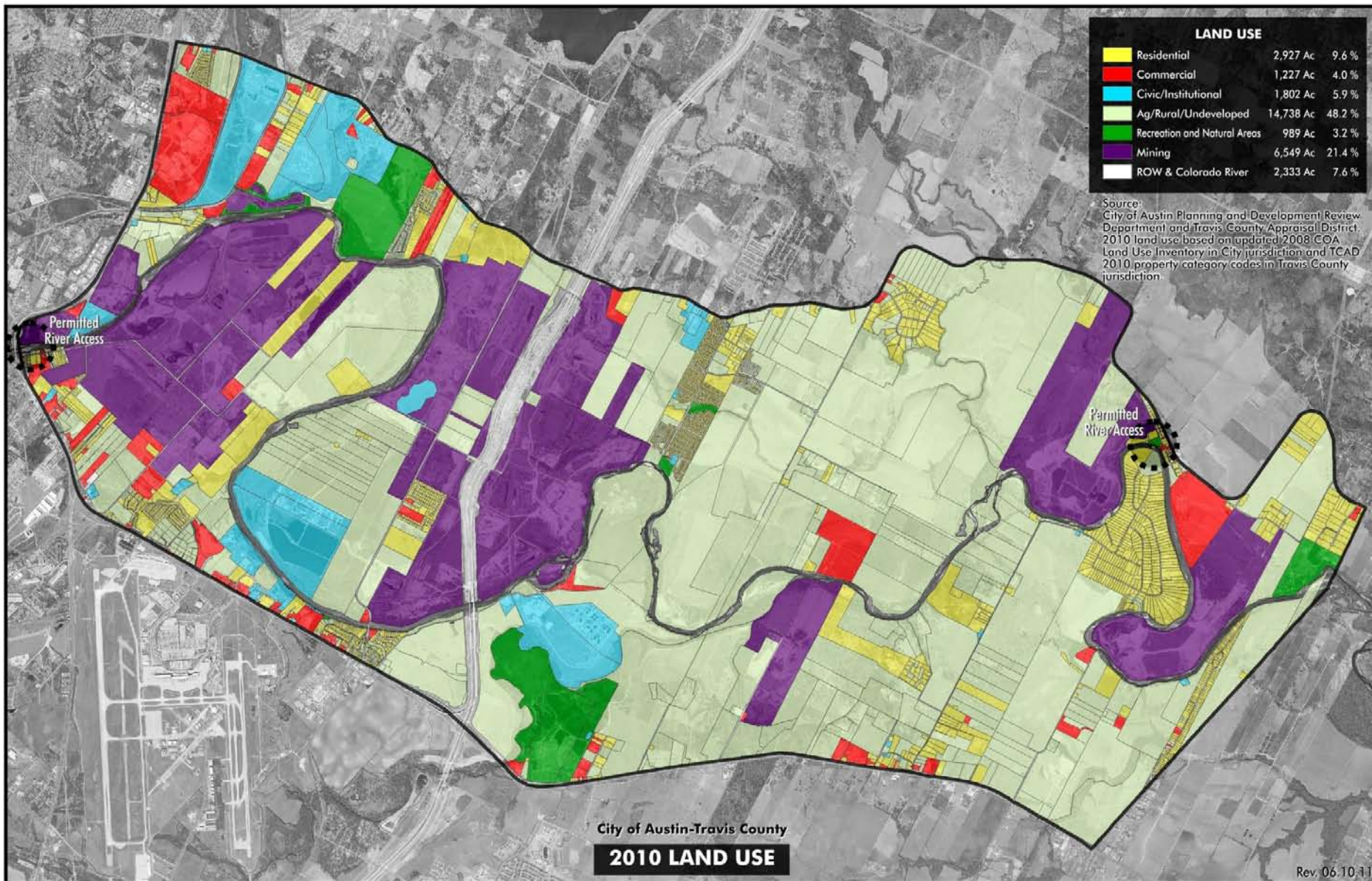
Travis County, Texas | Transportation and Natural Resources, City of Austin & LCRA

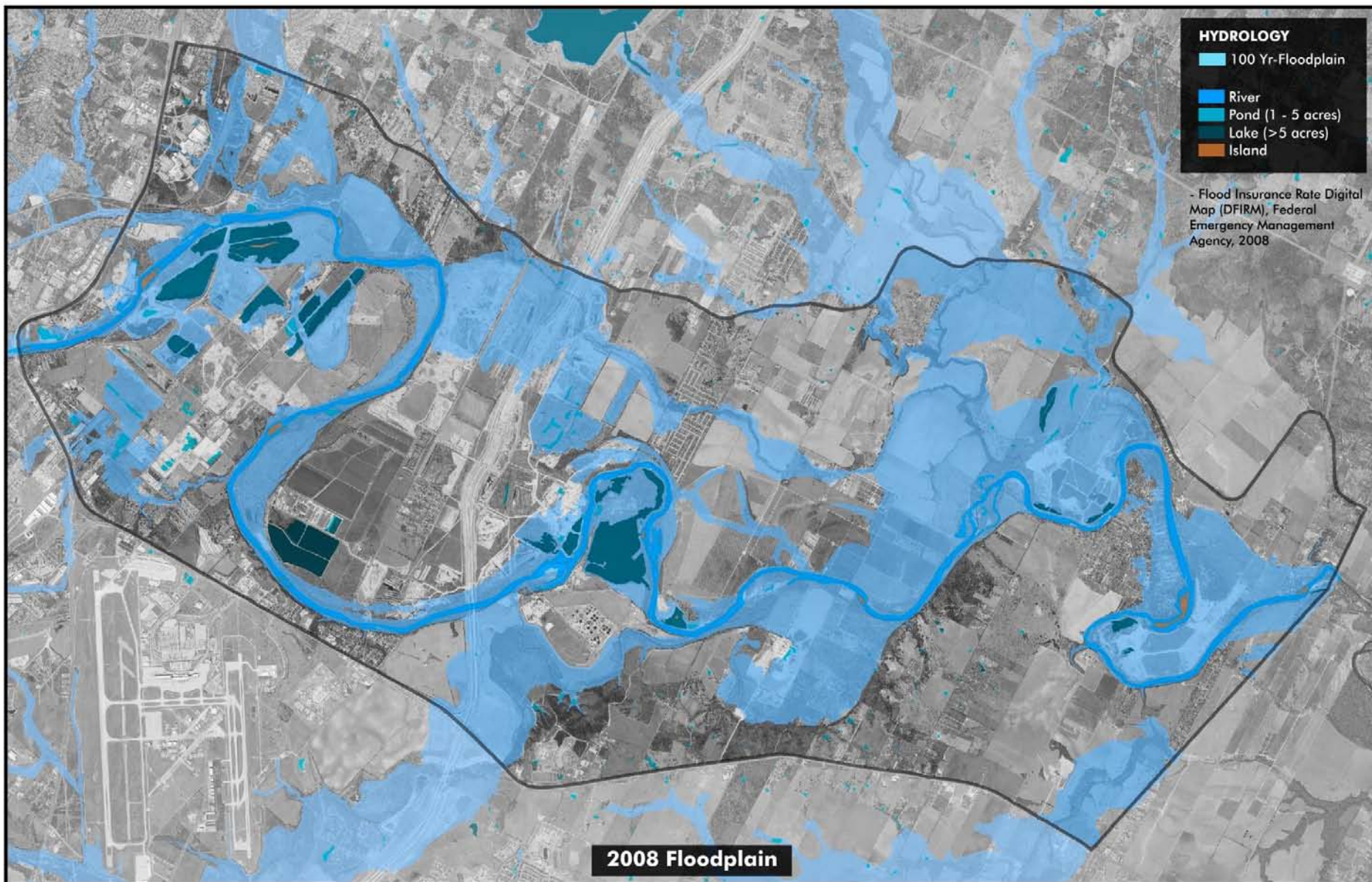


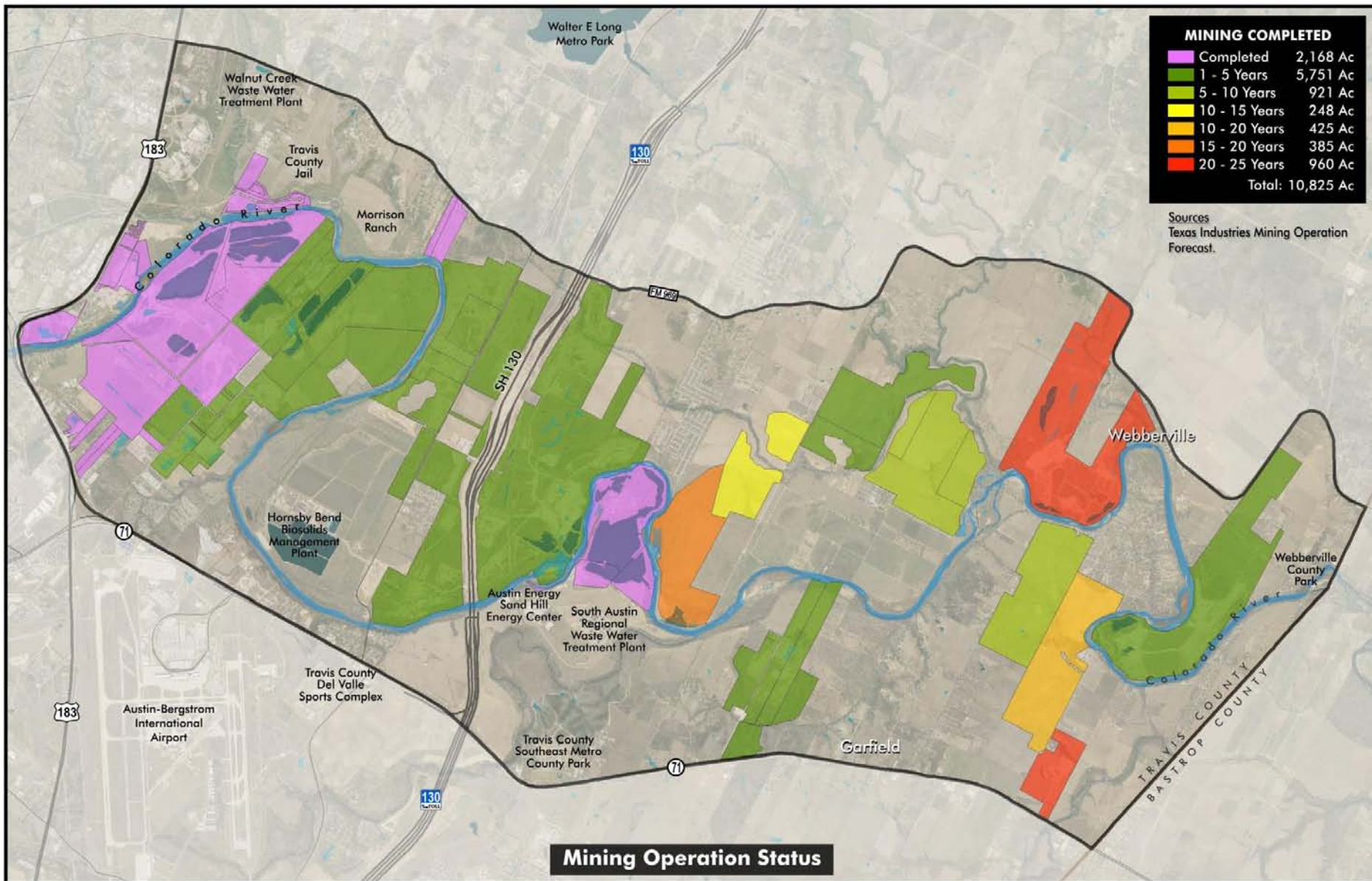


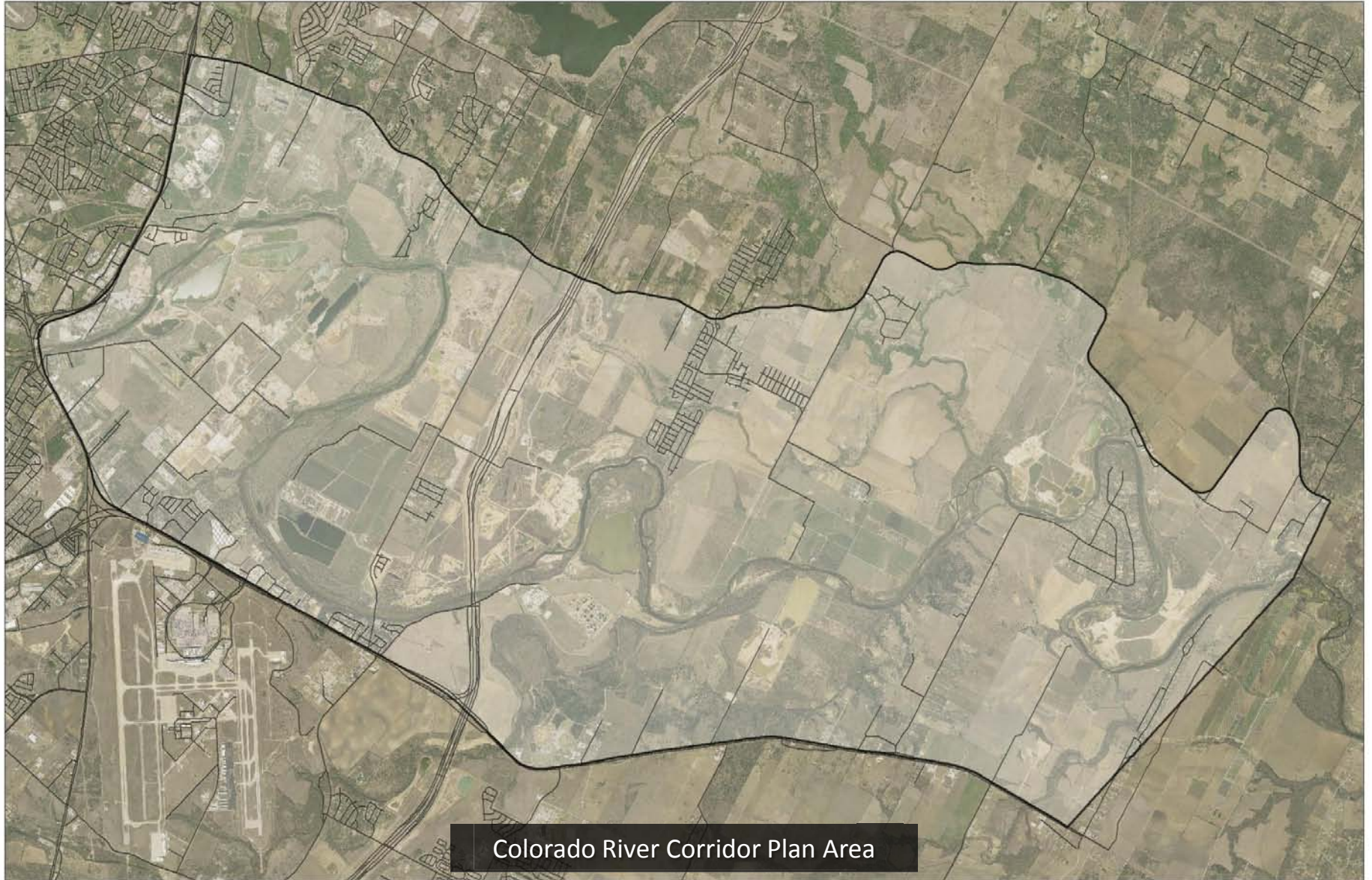


Source: City of Austin

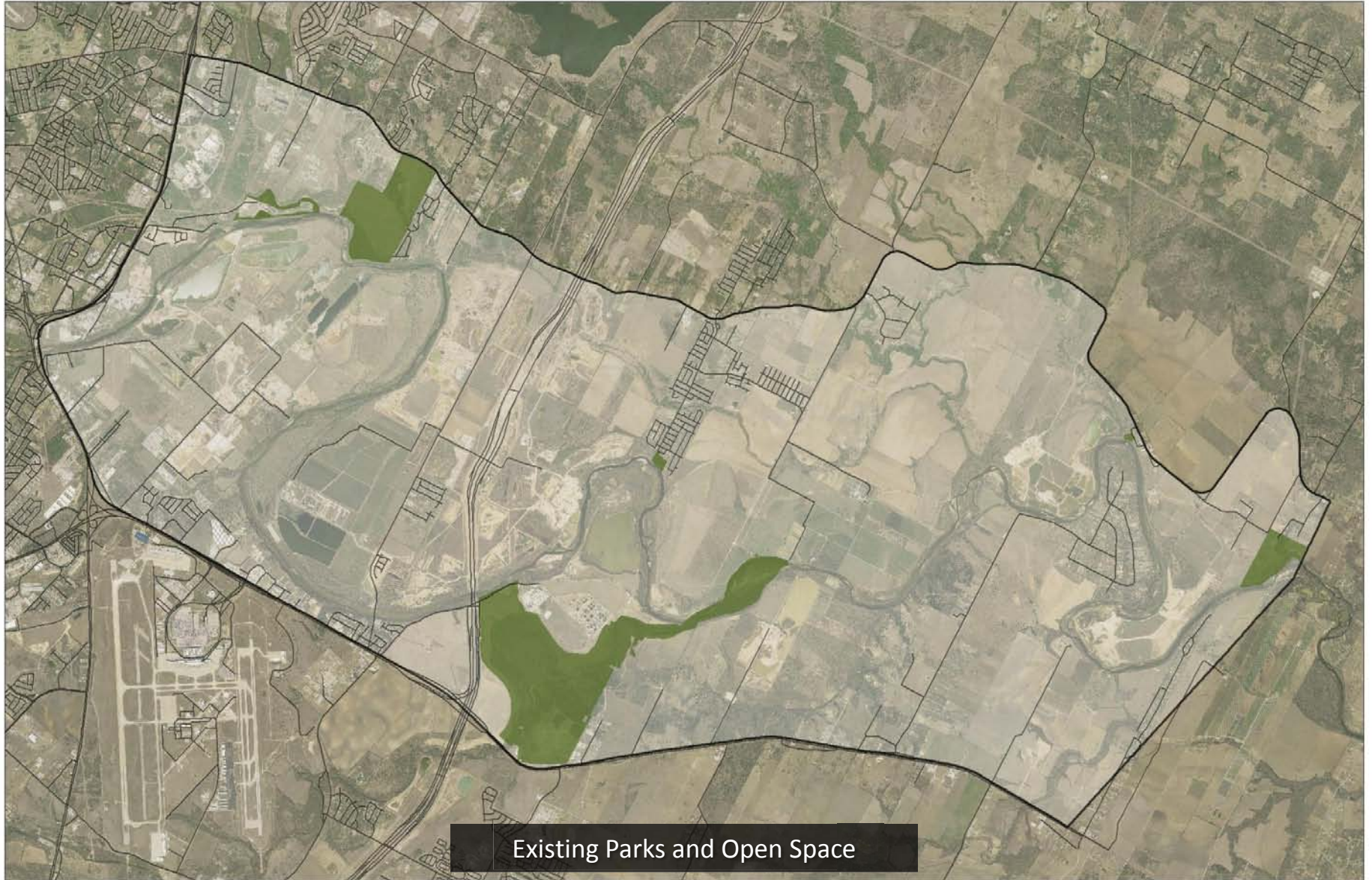








Colorado River Corridor Plan Area

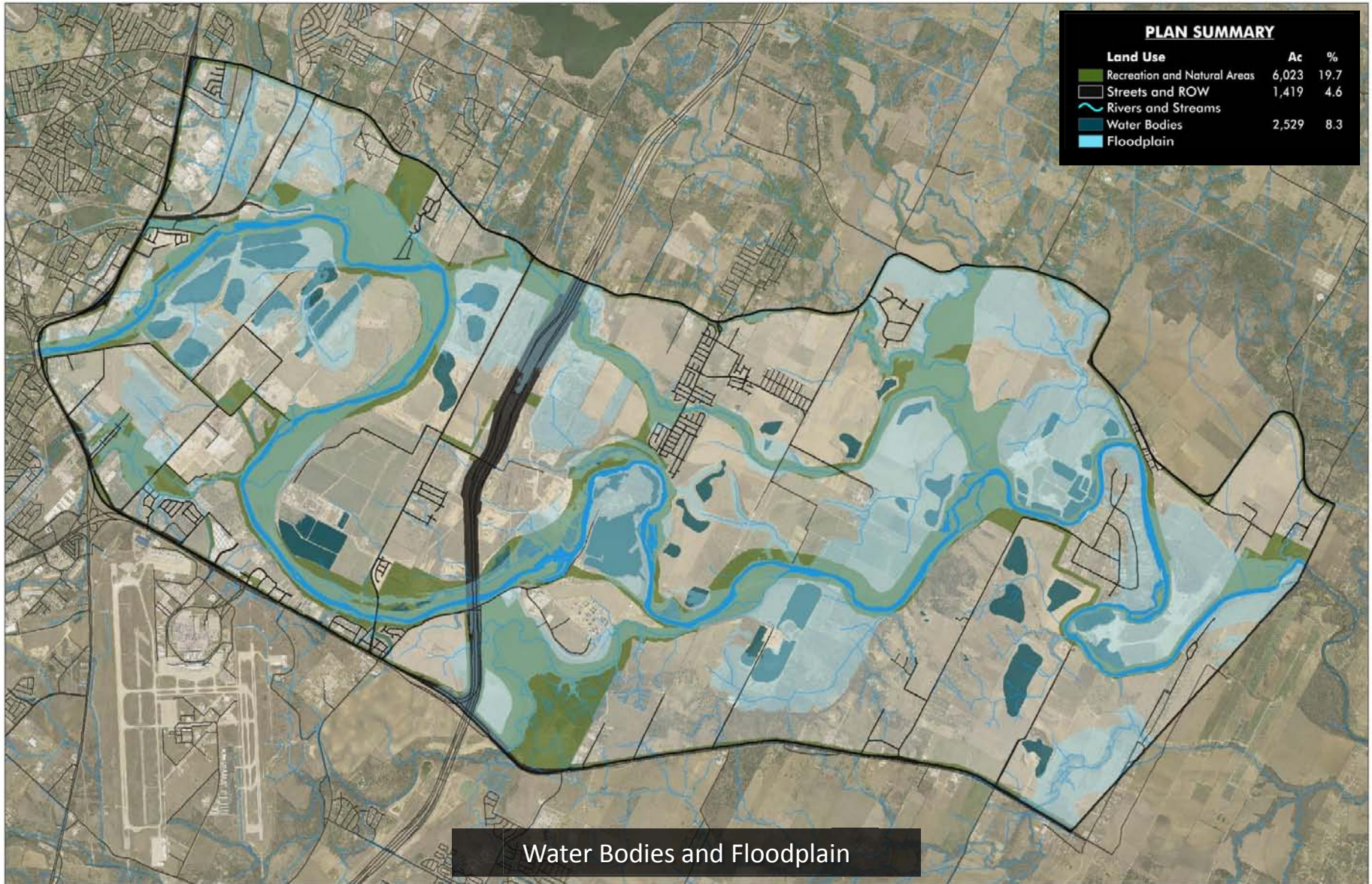


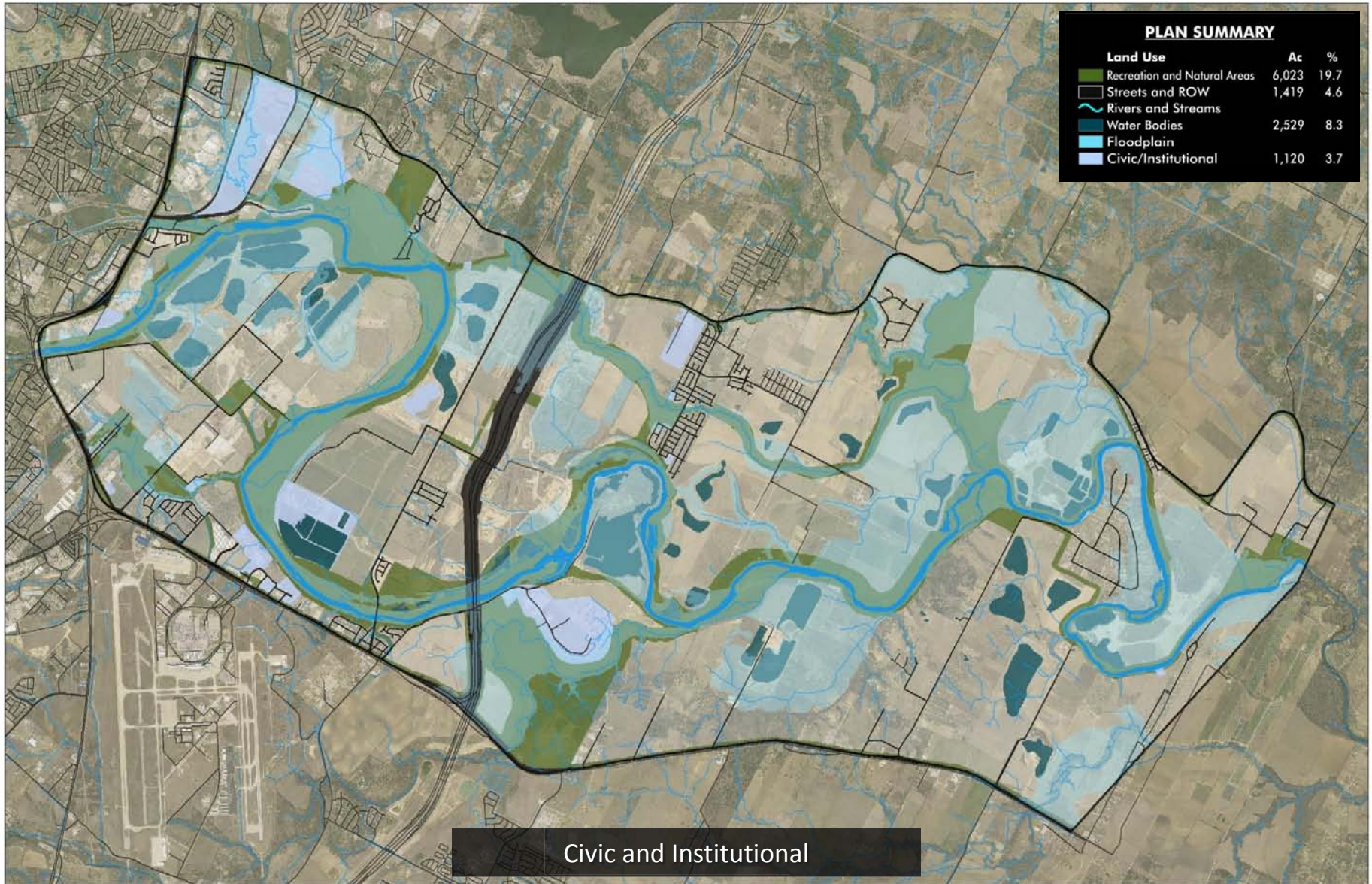
Existing Parks and Open Space

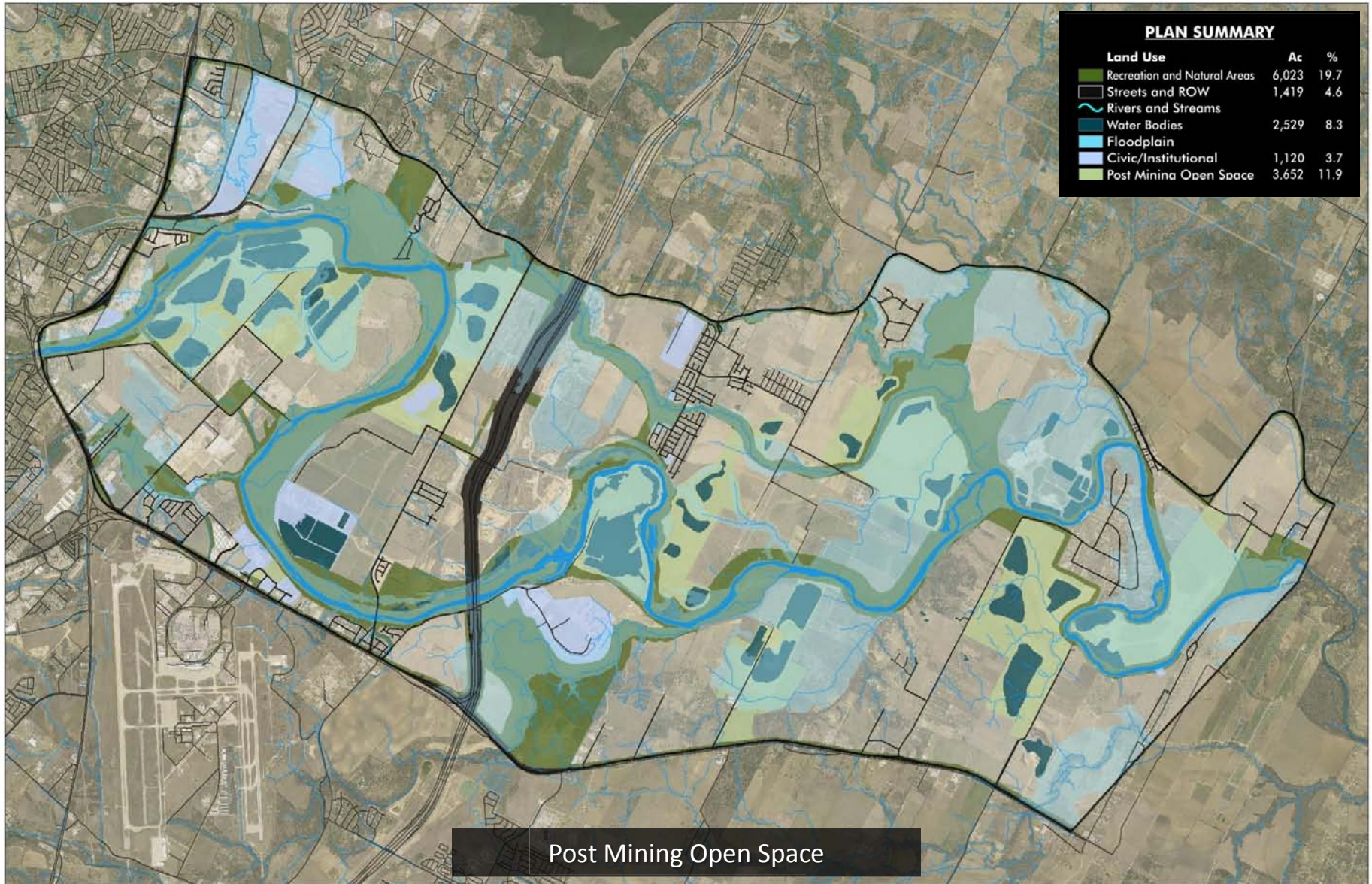


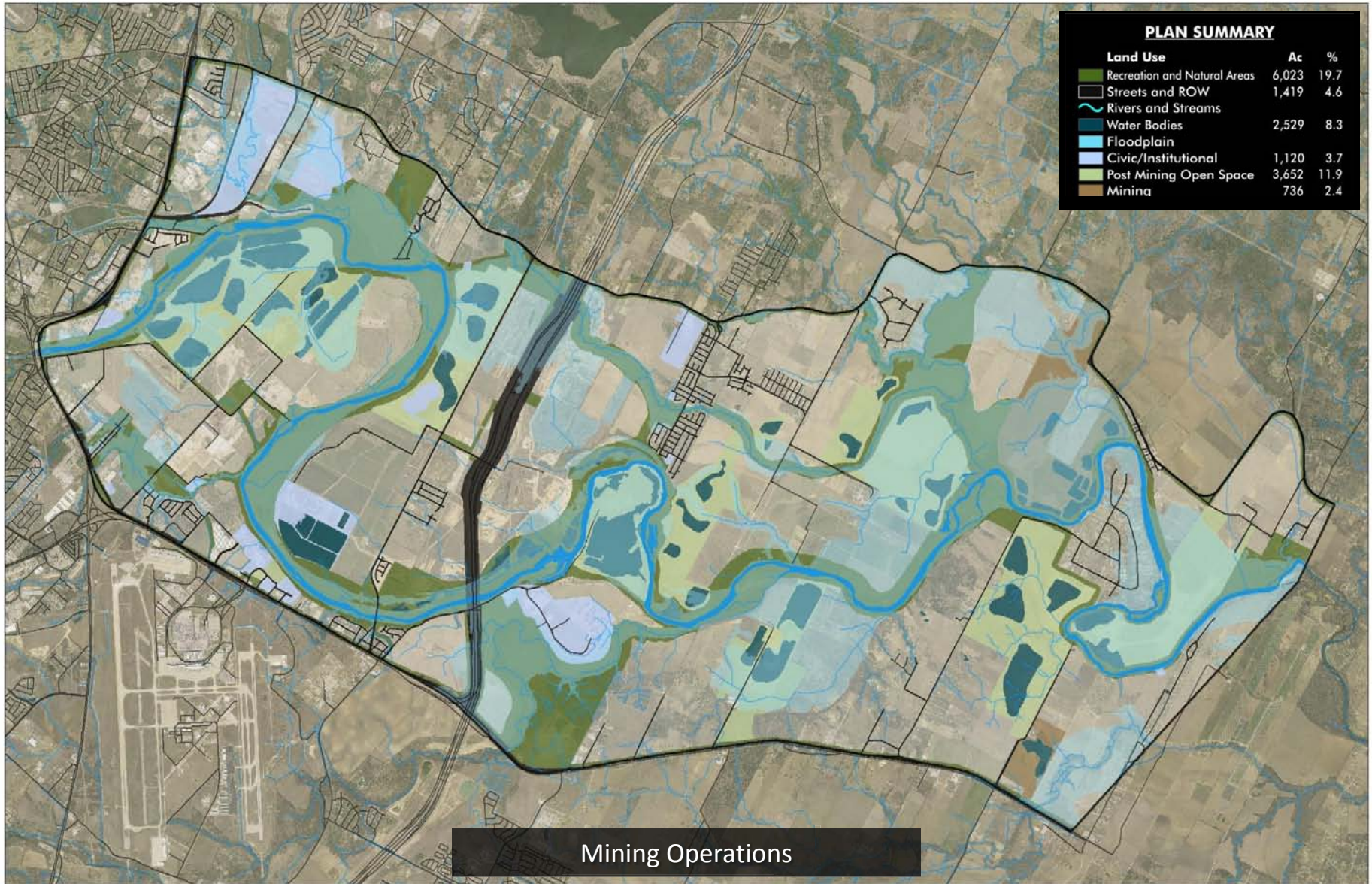


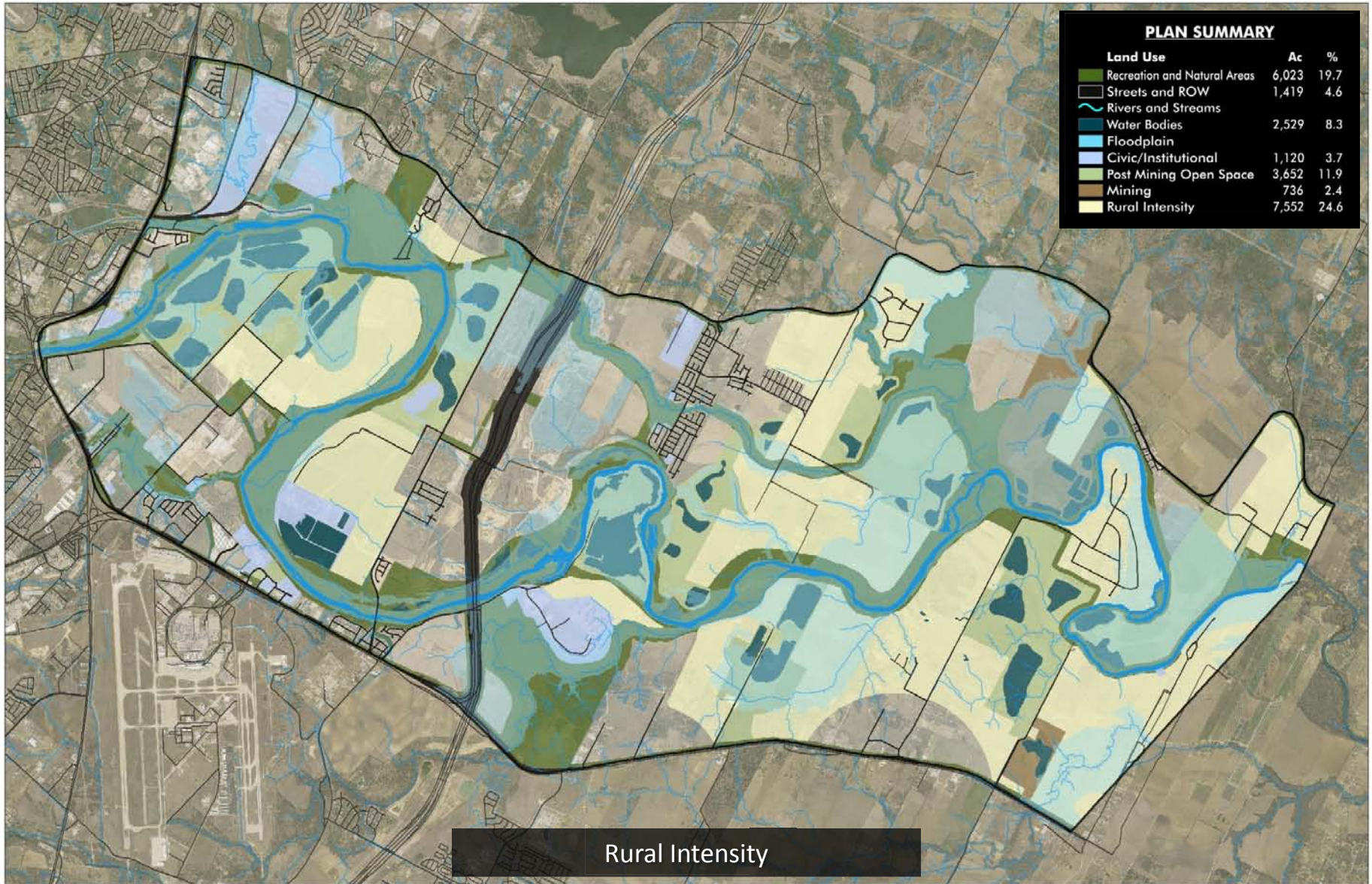


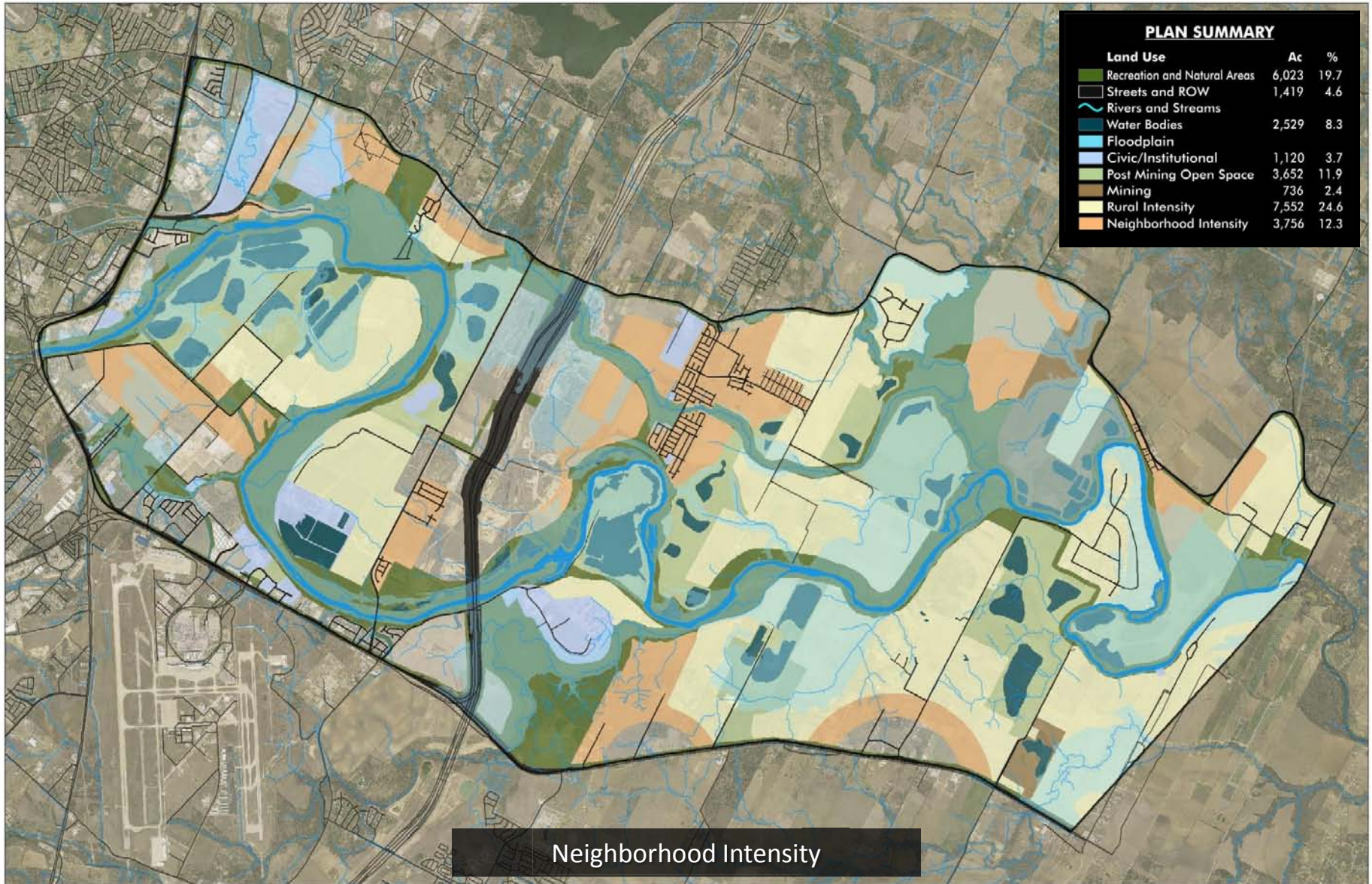


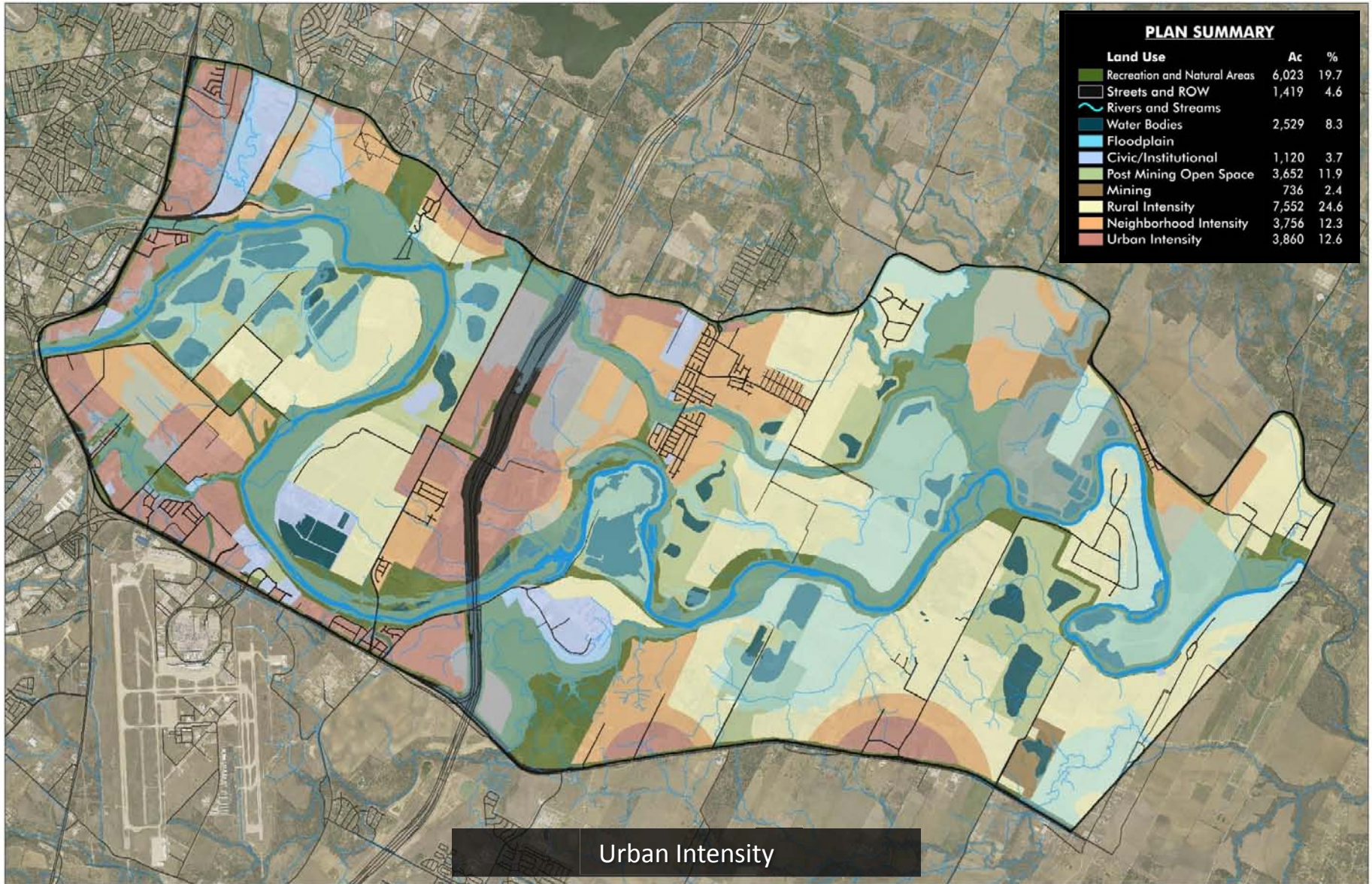


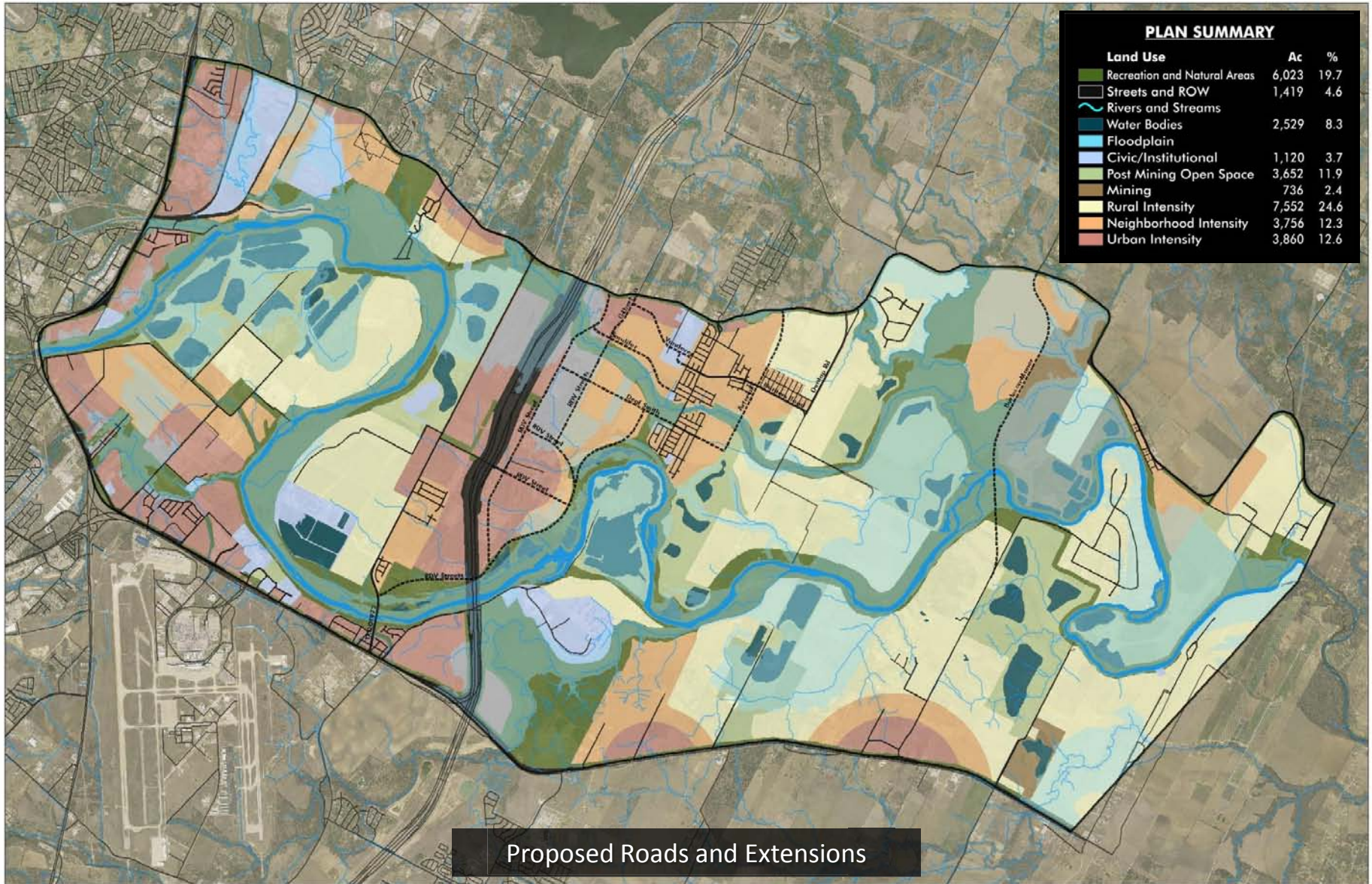


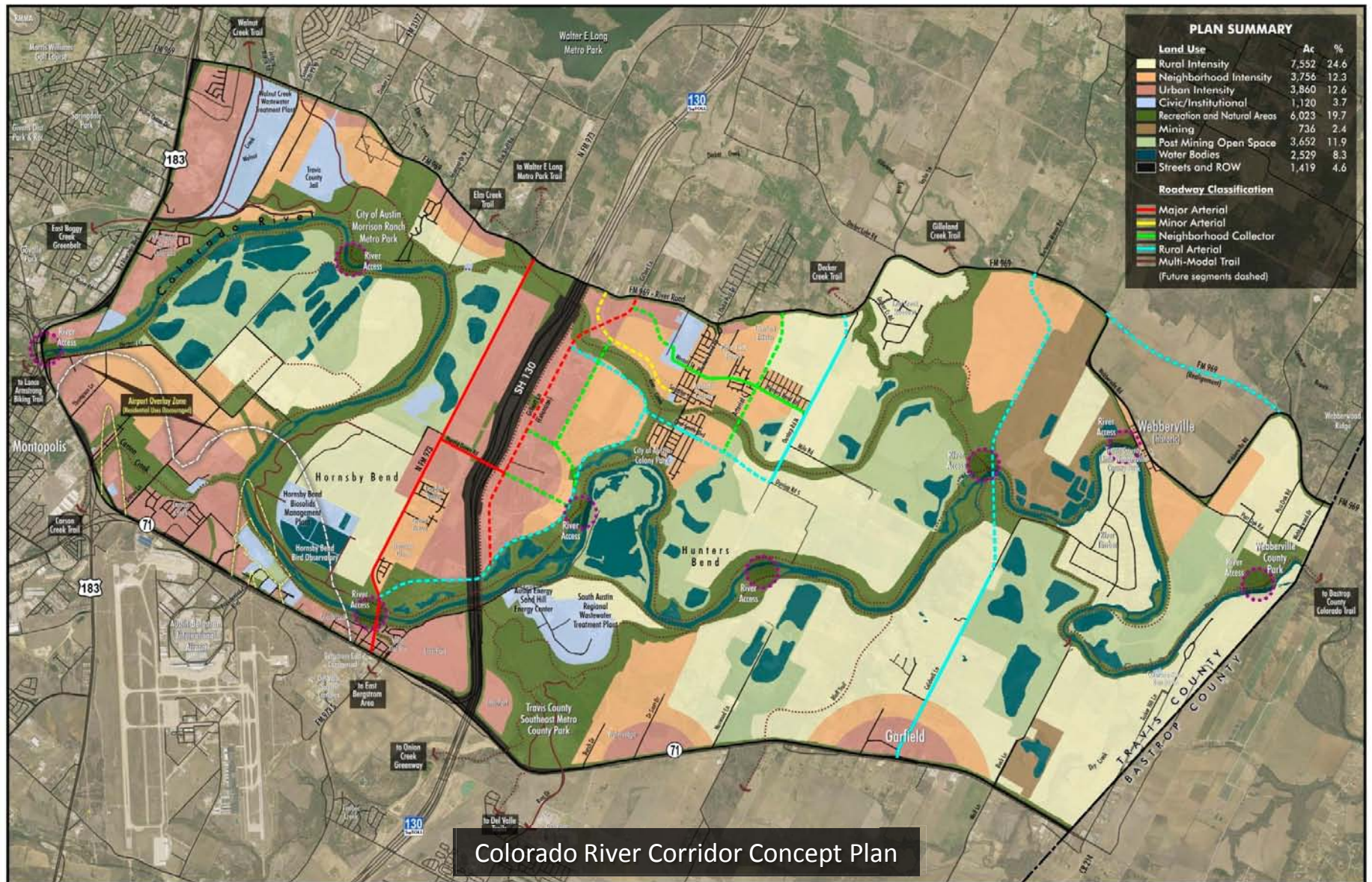


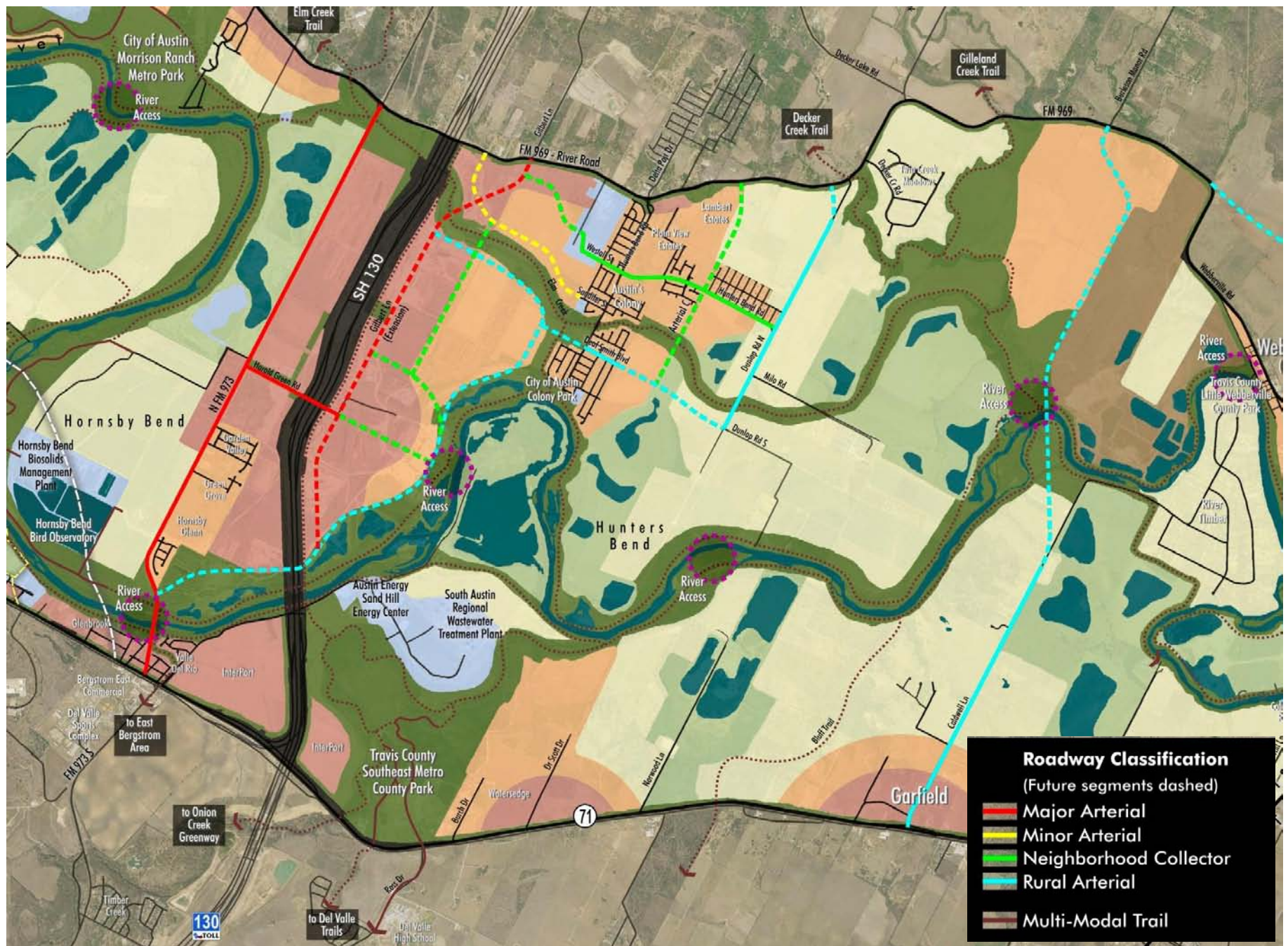


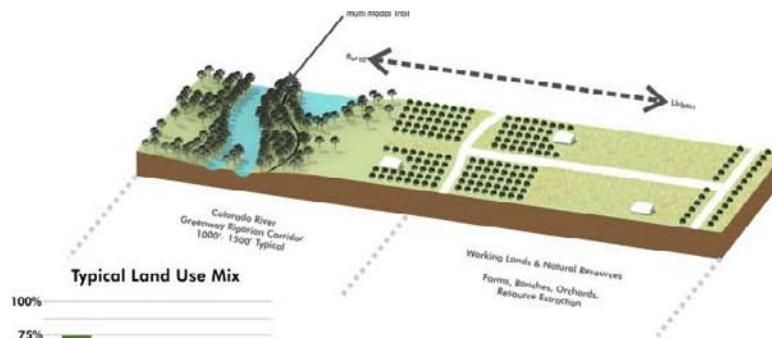




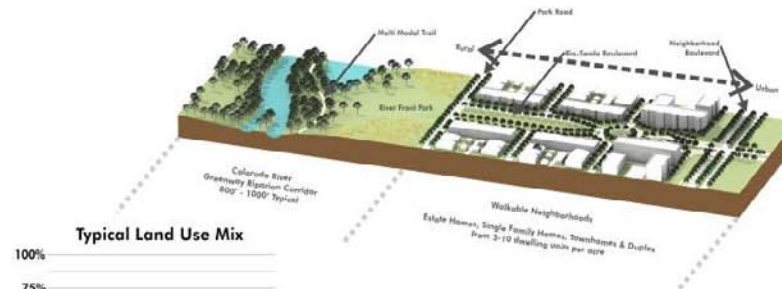
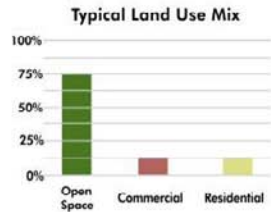




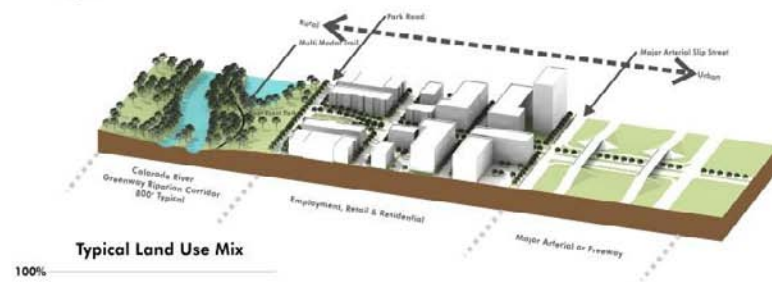
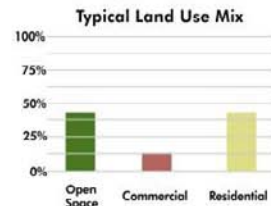




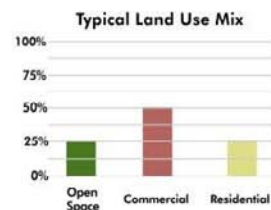
RURAL INTENSITY



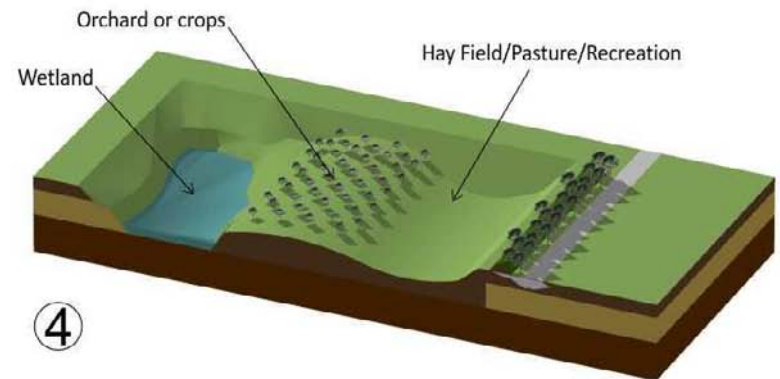
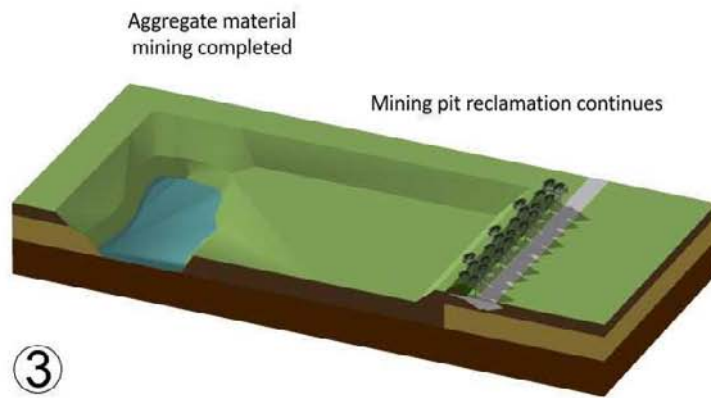
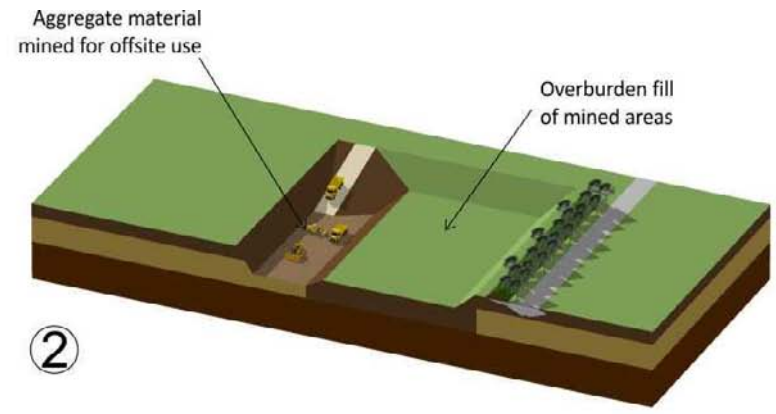
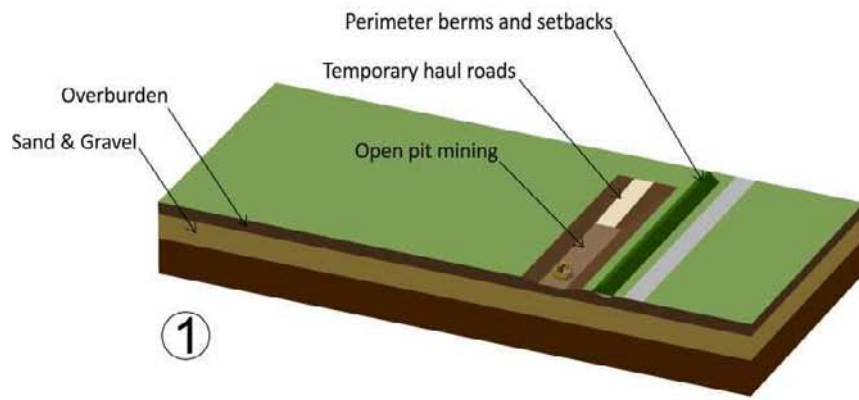
NEIGHBORHOOD INTENSITY



URBAN INTENSITY



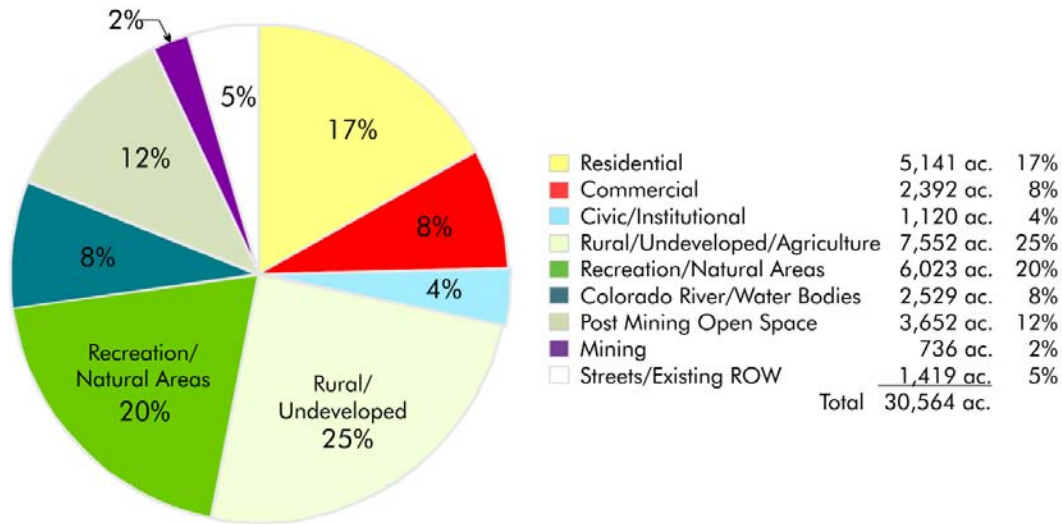
TRANSECTS



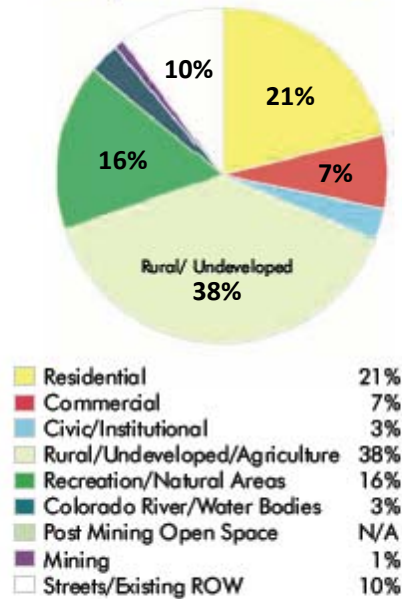
CONCURRENT RECLAMATION PROCESS

Market demand impacts the speed at which mining occurs. Therefore it is not uncommon for mining to last 20-30 years depending on tract size. Concurrent reclamation may significantly accelerate delivery and availability of a reclaimed mine.

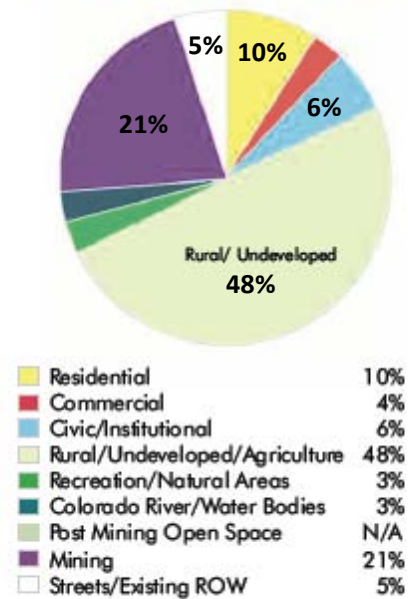
Corridor Concept Land Use Projection



Austin City-Wide 2008 Land Use*



2010 Corridor Land Use



* Source: Imagine Austin

